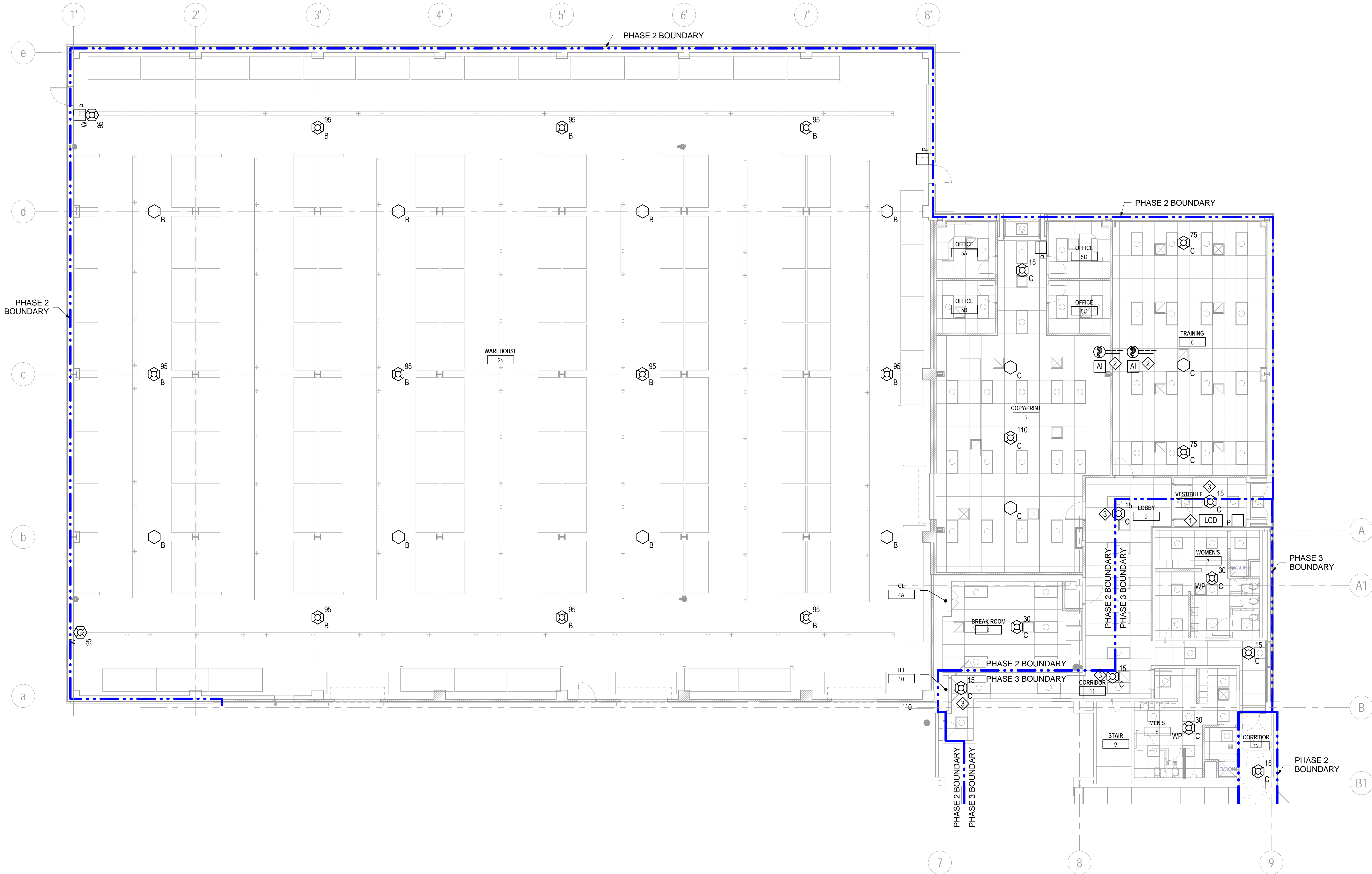


SHEET NOTES

1. REFER TO SHEET FA001 FOR SYMBOLS AND ABBREVIATIONS.
2. PROVIDE FIRE ALARM INITIATING DEVICES AND NOTIFICATION APPLIANCES THROUGHOUT BUILDING 360 IN ACCORDANCE WITH NFPA 72.
3. COMPLY WITH CONSTRUCTION PHASING AND SEQUENCING NOTES ON SHEET G005.

KEYNOTES

- ◇ PROVIDE LCD FIRE ALARM ANNUNCIATOR AT BUILDING ENTRANCE.
- ◇ DIVISION 28 31 11 CONTRACTOR SHALL PROVIDE DUCT SMOKE DETECTOR WITHIN 3 FEET OF FIRE/SMOKE DAMPER. PROVIDE ADDRESSABLE RELAY MODULE TO CLOSE DAMPER UPON DUCT SMOKE ACTUATION. PROVIDE TEST STATION-REMOTE LED MOUNTED IN PUBLIC VIEW. FIRE/SMOKE DAMPER POWER CONNECTION TO BE PROVIDED BY DIVISION 23 CONTRACTOR. REFER TO MECHANICAL PLANS FOR FIRE/SMOKE DAMPER LOCATIONS.
- ◇ PROVIDE DURING PHASE 3.



1 FIRE ALARM BUILDING NORTH GROUND FLOOR NEW WORK PLAN
FA101 1/8" = 1'-0"

0 4' 8' 16'

CAUTION: IF THIS PLAN IS A REDUCTION, GRAPHIC SCALE MUST BE USED

Additions:	Date
Revisions:	Date
SCHEMATIC DESIGN (30%) SUBMISSION	03/25/15
DESIGN DEVELOPMENT (60%) SUBMISSION	09/11/15
CONSTRUCTION DOCUMENTS (90% SUBMISSION)	11/23/15
BID DOCUMENTS SUBMISSION	03/17/16

ARCHITECT / ENGINEERS / CONSULTANTS:			
OKKS Studios, Inc. 2 Wisconsin Circle / Suite 820 Chevy Chase, MD 20815-7003 Tel: (301) 718-0080 Fax: (301) 718-9520 www.okksstudios.com	Nobis Engineering, Inc. 20410 Century Boulevard, Suite 230 Germantown, MD 20874 Tel: (301) 528-2010	Woods Peacock Engineering Consultants 5250 Cherokee Avenue, Suite 420 Alexandria, VA 22312-2052 Tel: (703) 658-4400 Fax: (703) 658-4404	
Henry Adams Consulting Engineers, LLC 600 Baltimore Avenue, 4th Floor Baltimore, MD 21204 Tel: (410) 296-6500 Fax: (410) 296-6501		The Protection Engineering Group 2809 Boston Street, Suite 7 Baltimore, MD 21224 USA Tel: (443) 708-4096	



Approved:	Approved: Chief, Facilities and Engineering
	Approved: Associate Chief for Maintenance And Operations, Perry Point
	Approved: Engineering Projects Supervisor
	Approved: Infection Control Officer

Approved: Chief, Facilities and Engineering
Approved: Associate Chief for Maintenance And Operations, Perry Point
Approved: Engineering Projects Supervisor
Approved: Infection Control Officer

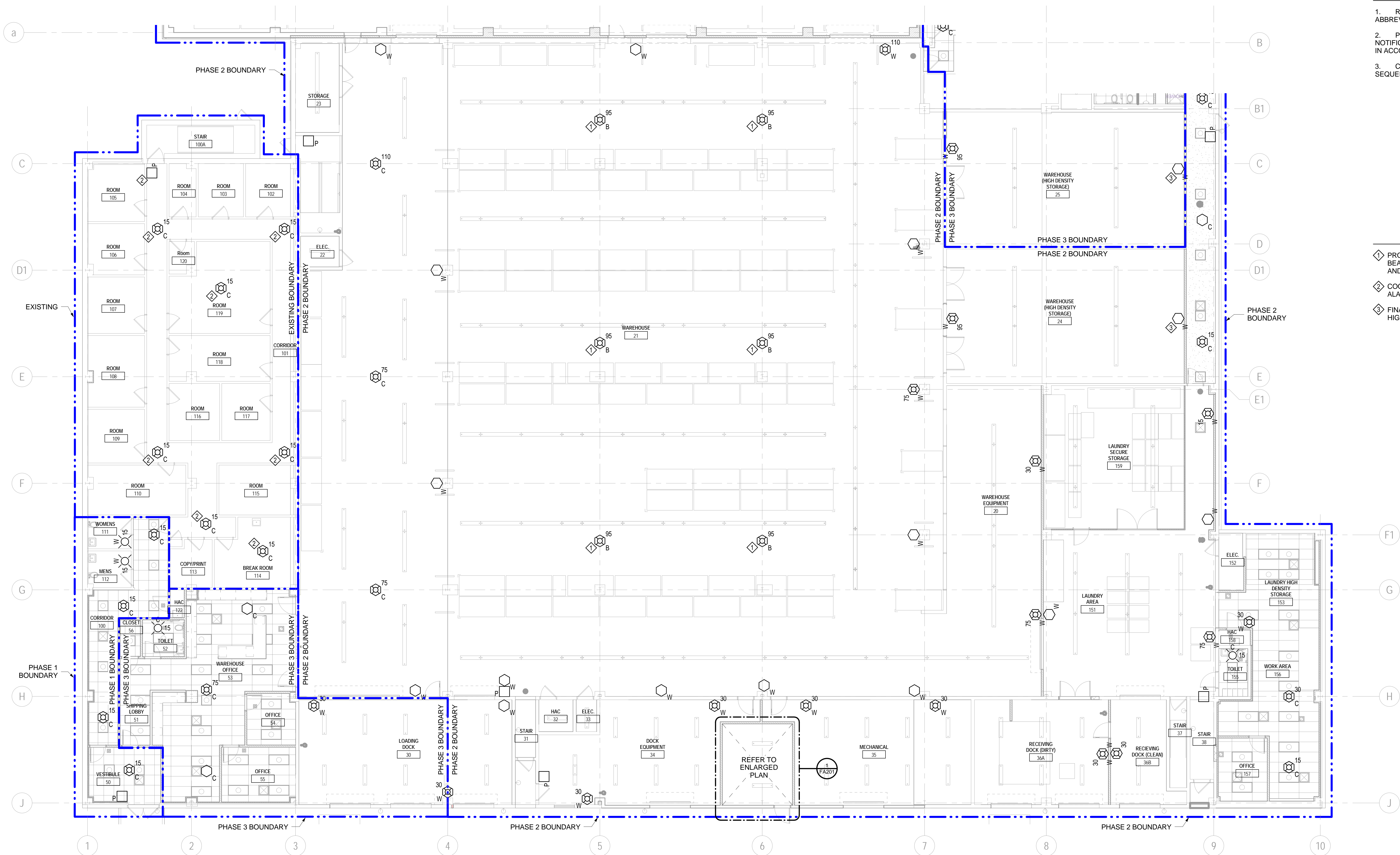
Drawing Title
FIRE ALARM BUILDING NORTH GROUND FLOOR NEW WORK PLAN
Approved: Associate Director for Operations
Approved: Director, Medical Center

FULLY SPRINKLERED

Project Title	Date
WAREHOUSE RENOVATION & EXPANSION	03/17/16
Scale 1/8" = 1'-0"	VA Project Number 512-530
Building Number 360	Checked CKC
Drawn ACJ	Drawing Number FA101
Location PERRY POINT, MD	OF XX



- ① PROVIDE NOTIFICATION APPLIANCES ON BOTTOM OF BEAM. COORDINATE LOCATIONS WITH ELECTRICAL AND MECHANICAL.
- ② COORDINATE INSTALLATION SCHEDULE OF NEW FIRE ALARM EQUIPMENT IN OFFICE SPACE WITH VA COR.
- ③ FINAL DEVICE LOCATION SHALL BE COORDINATE WITH HIGH DENSITY MOVABLE STORAGE.



1 FIRE ALARM BUILDING SOUTH GROUND FLOOR NEW WORK PLAN
FA102 1/8" = 1'-0"



**CAUTION: IF THIS PLAN IS A REDUCTION,
GRAPHIC SCALE MUST BE USED**

Additions:	Date
Revisions:	Date
SCHEMATIC DESIGN (30%) SUBMISSION	03/25/15
DESIGN DEVELOPMENT (60%) SUBMISSION	09/11/15
CONSTRUCTION DOCUMENTS (90% SUBMISSION)	11/23/15
BID DOCUMENTS SUBMISSION	03/17/16

ARCHITECT / ENGINEERS / CONSULTANTS:		
OKKS Studios, Inc. 2 Wisconsin Circle / Suite #20 Chevy Chase, MD 20815-7003 Tel: (301) 718-0080 Fax: (301) 718-9520 www.okkstudios.com	Nobis Engineering, Inc. 20410 Century Boulevard, Suite 230 Germantown, MD 20874 Tel: (301) 528 2010	The Protection Engineering Group 60N Baltimore Avenue, 4th Floor Baltimore, MD 21204 Tel: (410) 296-6300 Fax: (410) 296-6301
Woods Peacock Engineering Consultants 5250 Cherokee Avenue, Suite 420 Alexandria, VA 22302-2092 Tel: (703) 658-4400 Fax: (703) 658-4404		

	Stamp/Seal
Professional Certification I certify that those documents were prepared or approved by me, and that I am duly licensed professional engineer under the laws of the State of Maryland. License No. 41369; expiration date 01/05/2018.	

Approved: Chief, Facilities and Engineering
Approved: Associate Chief for Maintenance And Operations, Perry Point
Approved: Engineering Projects Supervisor
Approved: Infection Control Officer

Drawing Title FIRE ALARM BUILDING SOUTH GROUND FLOOR NEW WORK PLAN
Approved: Associate Director for Operations
Approved: Director, Medical Center

PERRY SPRINKLERED Project Title WAREHOUSE RENOVATION & EXPANSION			
Scale 1/8" = 1'-0"	Building Number 360	Checked CKC	Drawn ACJ
Location PERRY POINT, MD			

Date 03/17/16
VA Project Number E12-530
Drawing Number FA102 OF XX

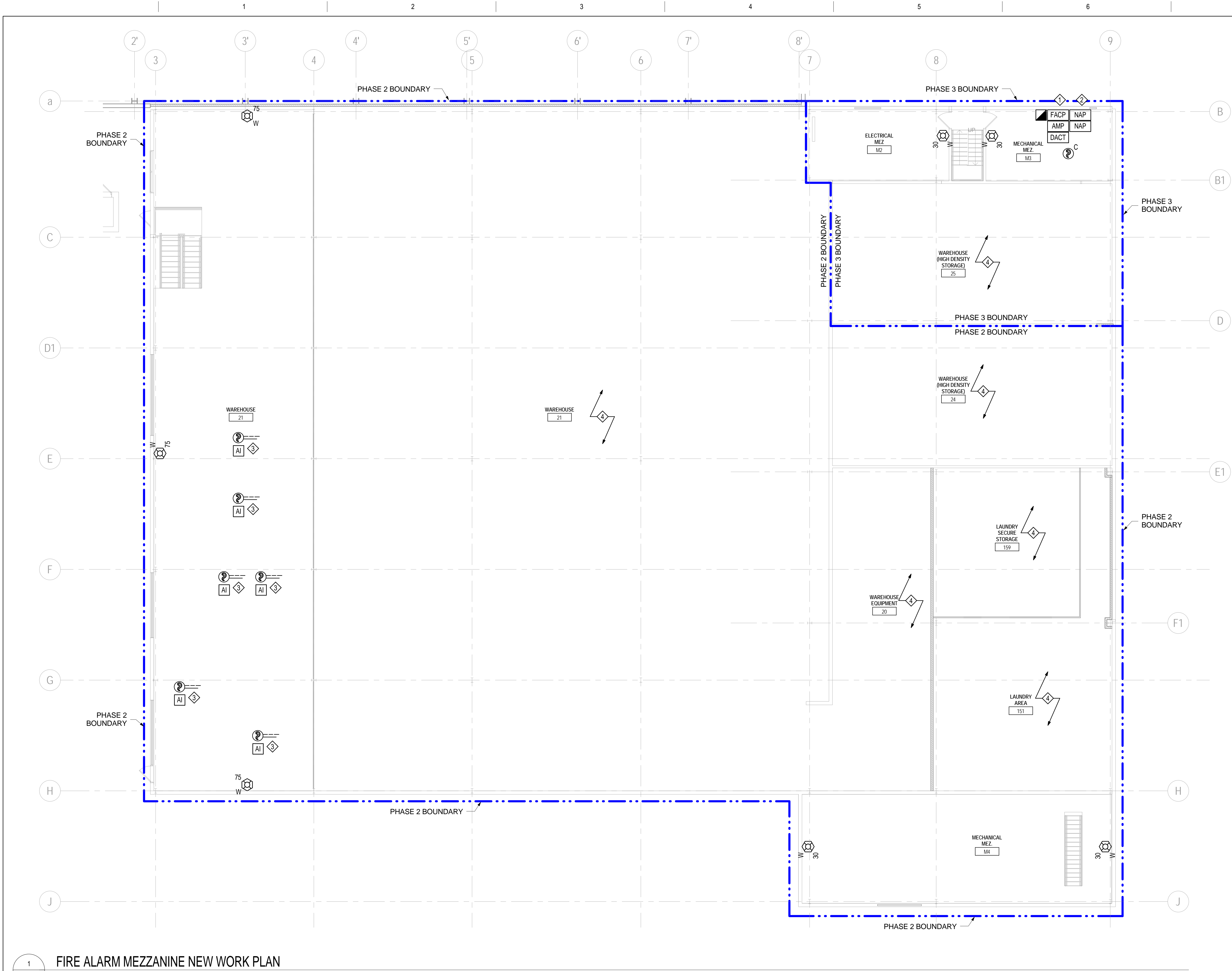
DEPARTMENT OF VETERANS AFFAIRS

SHEET NOTES

1. REFER TO SHEET FA001 FOR SYMBOLS AND ABBREVIATIONS.
2. PROVIDE FIRE ALARM INITIATING DEVICES AND NOTIFICATION APPLIANCES THROUGHOUT BUILDING 360.
3. COMPLY WITH CONSTRUCTION PHASING AND SEQUENCING NOTES ON SHEET G005.
4. PROVIDE EQUIPMENT DURING PHASE 2, UNLESS NOTED OTHERWISE.

KEYNOTES

1. PROVIDE NEW FIRE ALARM CONTROL PANEL DURING PHASE 1. CONNECT ALL NEW FIRE ALARM EQUIPMENT TO NEW PANEL IN SUBSEQUENT PHASES. COORDINATE WITH VA COR SO THAT NEW PANEL IS CONNECTED TO CAMPUS FIRE ALARM SYSTEM IMMEDIATELY FOLLOWING INSTALLATION. MAINTAIN OPERATION OF BOTH NEW AND EXISTING PANELS UNTIL NEW SYSTEM IS FULLY INSTALLED, TESTED AND APPROVED.
2. INTERFACE BUILDING 360 WITH EXISTING SIGCOM TRANSMITTER PANEL. COORDINATE INTERFACE WITH VA COTR.
3. DIVISION 28 31 11 CONTRACTOR SHALL PROVIDE DUCT SMOKE DETECTOR WITHIN 3 FEET OF FIRE/SMOKE DAMPER. PROVIDE ADDRESSABLE RELAY MODULE TO CLOSE DAMPER UPON DUCT SMOKE ACTUATION. PROVIDE TEST STATION-REMOTE LED MOUNTED IN PUBLIC VIEW. FIRE/SMOKE DAMPER POWER CONNECTION TO BE PROVIDED BY DIVISION 23 CONTRACTOR. REFER TO MECHANICAL PLANS FOR FIRE/SMOKE DAMPER LOCATIONS.
4. REFER TO SHEET FA102 FOR FIRE ALARM DEVICE LOCATIONS FOR WAREHOUSE AREAS.



THREE INCHES - ONE FOOT (3" = 1'-0")

ONE AND ONE HALF INCHES - ONE FOOT (1 1/2" = 1'-0")

ONE INCH - ONE FOOT (1" = 1'-0")

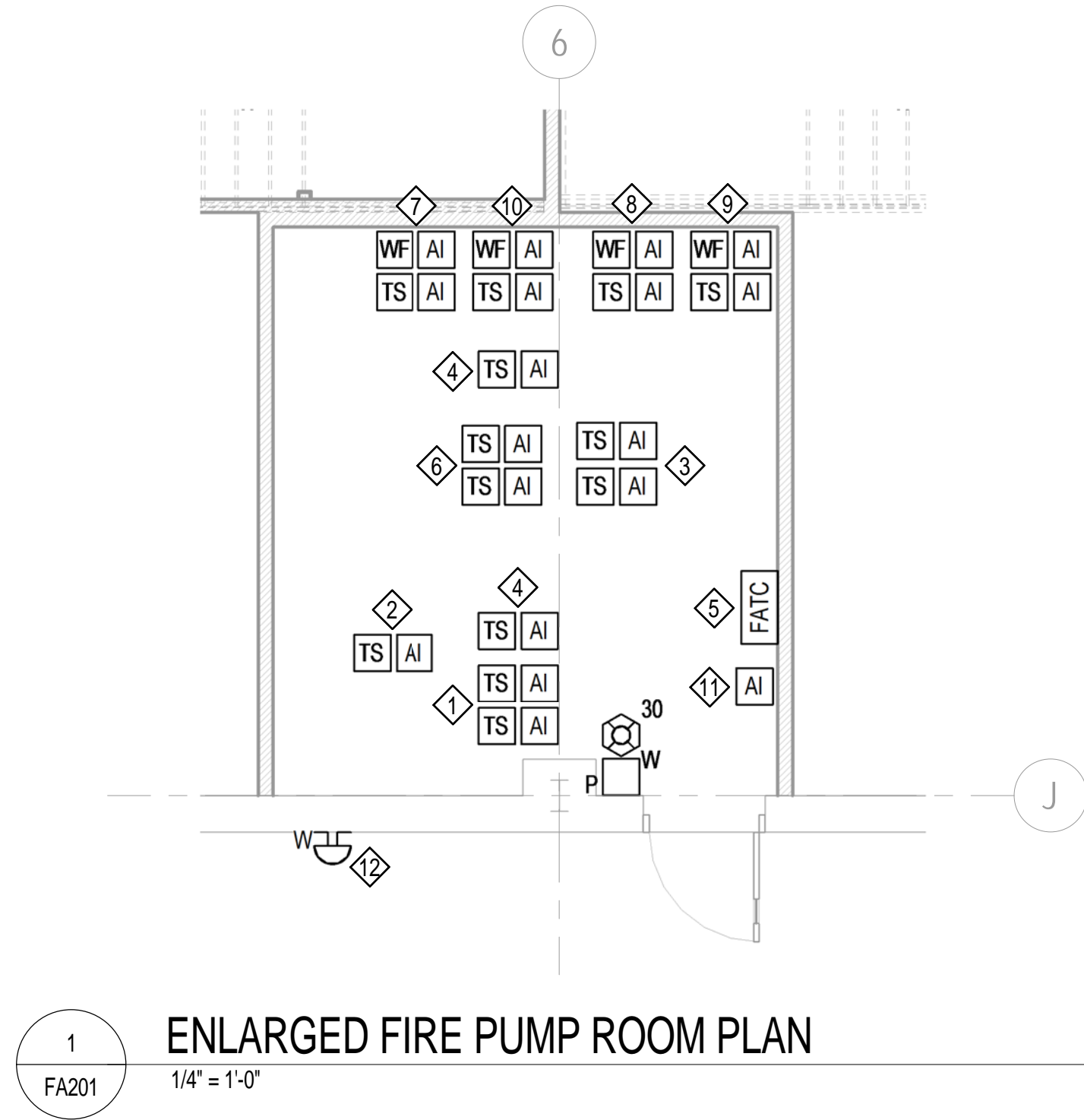
THREE QUARTERS INCH - ONE FOOT (3/4" = 1'-0")

ONE HALF INCH - ONE FOOT (1/2" = 1'-0")

THREE EIGHTHS INCH - ONE FOOT (3/8" = 1'-0")

ONE QUARTER INCH - ONE FOOT (1/4" = 1'-0")

ONE EIGHTH INCH - ONE FOOT (1/8" = 1'-0")

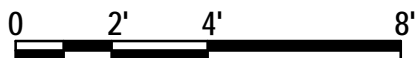


SHEET NOTES

1. REFER TO SHEET FA001 FOR SYMBOLS AND ABBREVIATIONS.
2. PROVIDE FIRE ALARM INITIATING DEVICES AND NOTIFICATION APPLIANCES THROUGHOUT BUILDING 360.
3. COMPLY WITH CONSTRUCTION PHASING AND SEQUENCING NOTES ON SHEET G005.

KEYNOTES

1. PROVIDE (2) ADDRESSABLE INTERFACE MODULE FOR FIRE ALARM SYSTEM MONITORING OF THE (2) BACKFLOW PREVENTER VALVE TAMPER SWITCHES.
2. PROVIDE ADDRESSABLE INTERFACE MODULE FOR FIRE ALARM SYSTEM MONITORING OF THE FIRE PUMP TEST HEADER VALVE TAMPER SWITCH.
3. PROVIDE (2) ADDRESSABLE INTERFACE MODULE FOR FIRE ALARM SYSTEM MONITORING OF THE (2) FIRE PUMP BYPASS VALVE TAMPER SWITCHES.
4. PROVIDE (2) ADDRESSABLE INTERFACE MODULE FOR FIRE ALARM SYSTEM MONITORING OF THE (2) FIRE PUMP SUCTION AND DISCHARGE VALVE TAMPER SWITCHES.
5. ADDRESSABLE INTERFACE MODULES SHALL BE PROVIDED IN A FIRE ALARM TERMINAL CABINET TO MONITOR THE FOLLOWING CONDITIONS FOR THE FIRE PUMP (FOUR TOTAL):
 - 1) FIRE PUMP RUNNING (MOTOR ON)
 - 2) FIRE PUMP LOSS OF POWER
 - 3) FIRE PUMP PHASE REVERSAL
 - 4) FIRE PUMP CONTROLLER CONNECTED TO ALTERNATE POWER
6. PROVIDE (2) ADDRESSABLE INTERFACE MODULE FOR FIRE ALARM SYSTEM MONITORING OF THE (2) JOCKEY PUMP SUCTION AND DISCHARGE VALVE TAMPER SWITCHES.
7. PROVIDE ADDRESSABLE INTERFACE MODULES FOR FIRE ALARM SYSTEM MONITORING OF THE SPRINKLER ZONE-1 WATERFLOW AND TAMPER SWITCHES.
8. PROVIDE ADDRESSABLE INTERFACE MODULES FOR FIRE ALARM SYSTEM MONITORING OF THE SPRINKLER ZONE-2 WATERFLOW AND TAMPER SWITCHES.
9. PROVIDE ADDRESSABLE INTERFACE MODULES FOR FIRE ALARM SYSTEM MONITORING OF THE SPRINKLER ZONE-3 WATERFLOW AND TAMPER SWITCHES.
10. PROVIDE ADDRESSABLE INTERFACE MODULES FOR FIRE ALARM SYSTEM MONITORING OF THE SPRINKLER ZONE-4 WATERFLOW AND TAMPER SWITCHES.
11. PROVIDE ADDRESSABLE INTERFACE MODULE FOR FIRE ALARM SYSTEM MONITORING OF THE INCOMING WATER LINE PIV. ADDRESSABLE INTERFACE MODULE SHALL BE LOCATED WITHIN THE FIRE PUMP ROOM. CONDUIT SHALL BE ROUTED FROM THE MODULE OUT TO THE TAMPER SWITCH ON THE PIV.
12. PROVIDE A WEATHERPROOF EXTERIOR ELECTRONIC BELL ABOVE FIRE DEPARTMENT CONNECTION. BELL SHALL ACTIVATE UPON WATER FLOW OF WAREHOUSE SPRINKLER SYSTEM.



CAUTION: IF THIS PLAN IS A REDUCTION, GRAPHIC SCALE MUST BE USED

Additions:		Date	
Revisions:		Date	
SCHEMATIC DESIGN (30%) SUBMISSION		03/25/15	
DESIGN DEVELOPMENT (60%) SUBMISSION		09/11/15	
CONSTRUCTION DOCUMENTS (90% SUBMISSION)		11/23/15	
BID DOCUMENTS SUBMISSION		03/17/16	

ARCHITECT / ENGINEERS / CONSULTANTS:	
OKKS Studios, Inc. 2 Wisconsin Circle / Suite 820 Chevy Chase, MD 20815-7003 Tel: (301) 718-0080 Fax: (301) 718-9520 www.okksstudios.com	Woods Peacock Engineering Consultants 5250 Cherokee Avenue, Suite 420 Alexandria, VA 22312-2052 Tel: (703) 658-4400 Fax: (703) 658-4404
Nobis Engineering, Inc. 20410 Century Boulevard, Suite 230 Germantown, MD 20874 Tel: (301) 528-2010	The Protection Engineering Group 2809 Boston Street, Suite 7 Baltimore, MD 21224 USA Tel: (443) 708-4096
Henry Adams Consulting Engineers, LLC 600 Baltimore Avenue, 4th Floor Baltimore, MD 21204 Tel: (410) 296-6500 Fax: (410) 296-6501	

Stamp/Seal 	Professional Certification I certify that these documents were prepared or approved by me, and that I am duly licensed professional engineer under the laws of the State of Maryland, License No. 41369, expiration date 01/05/2018.
-----------------------	--

Approved:	Approved: Chief, Facilities and Engineering	Drawing Title FIRE ALARM ENLARGED PLAN
	Approved: Associate Chief for Maintenance And Operations, Perry Point	
	Approved: Engineering Projects Supervisor	
	Approved: Infection Control Officer	

Project Title WAREHOUSE RENOVATION & EXPANSION		Date 03/17/16	
Scale 1/4" = 1'-0"		Building Number 360	Checked CKC
Approved: Associate Director for Operations		Drawn ACJ	Drawing Number FA201
Approved: Director, Medical Center		Location PERRY POINT, MD	
		OF XX	

DEPARTMENT OF VETERANS AFFAIRS	
---------------------------------------	--

THREE INCHES - ONE FOOT (3" = 1'-0")

ONE AND ONE HALF INCHES - ONE FOOT (1 1/2" = 1'-0")

ONE INCH - ONE FOOT (1" = 1'-0")

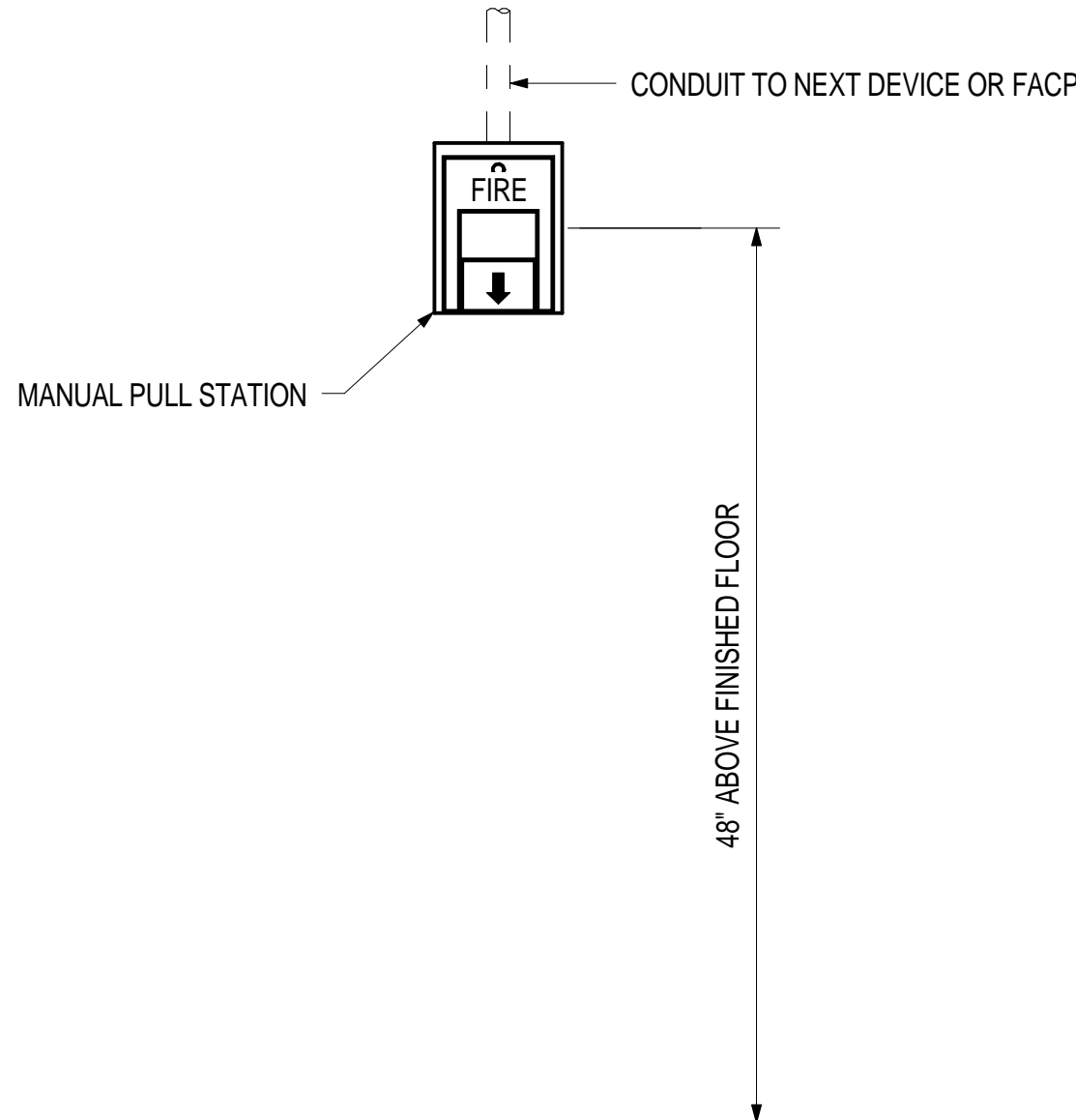
ONE HALF INCH - ONE FOOT (1/2" = 1'-0")

THREE QUARTERS INCH - ONE FOOT (3/4" = 1'-0")

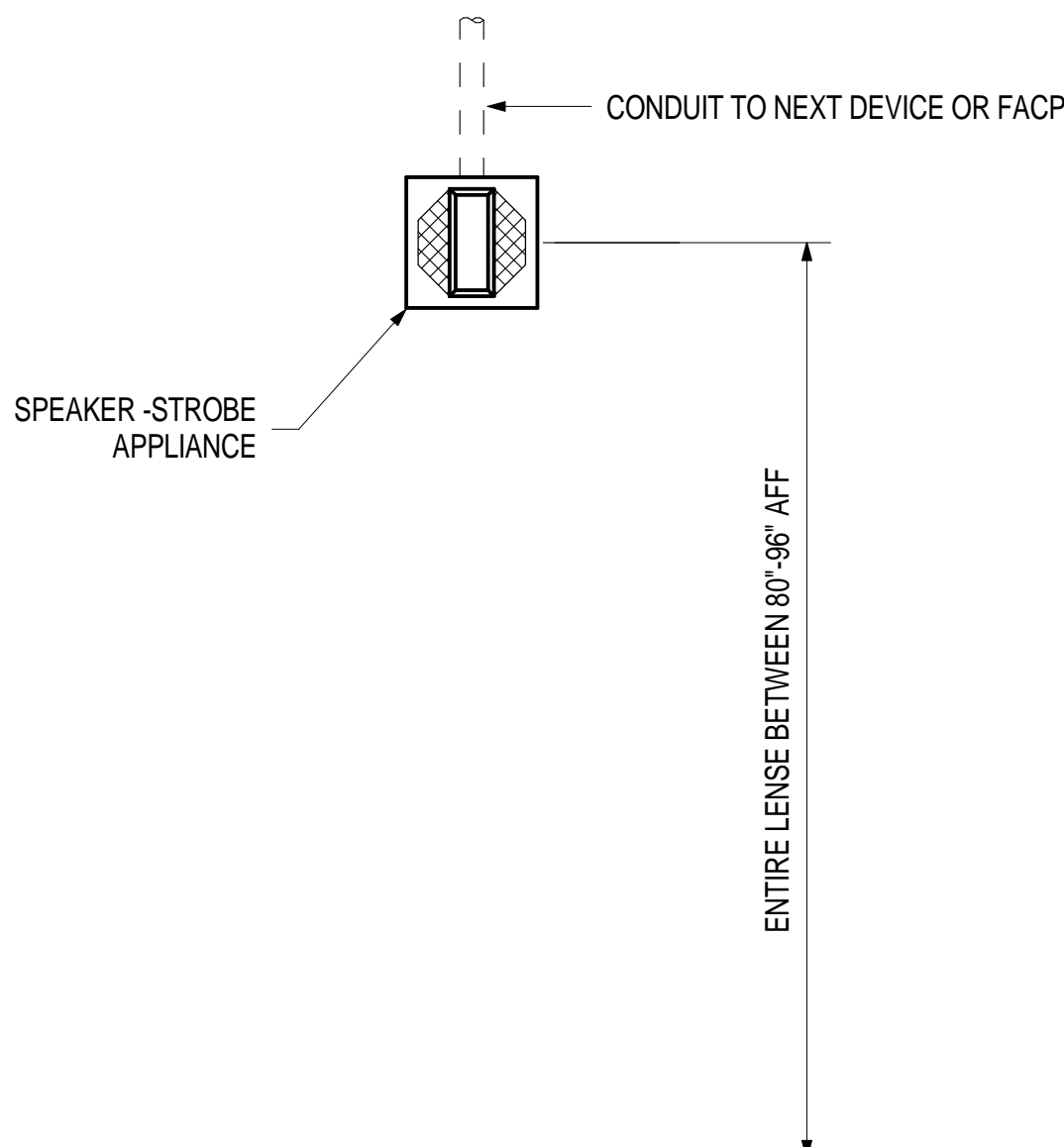
ONE QUARTER INCH - ONE FOOT (1/4" = 1'-0")

THREE EIGHTHS INCH - ONE FOOT (3/8" = 1'-0")

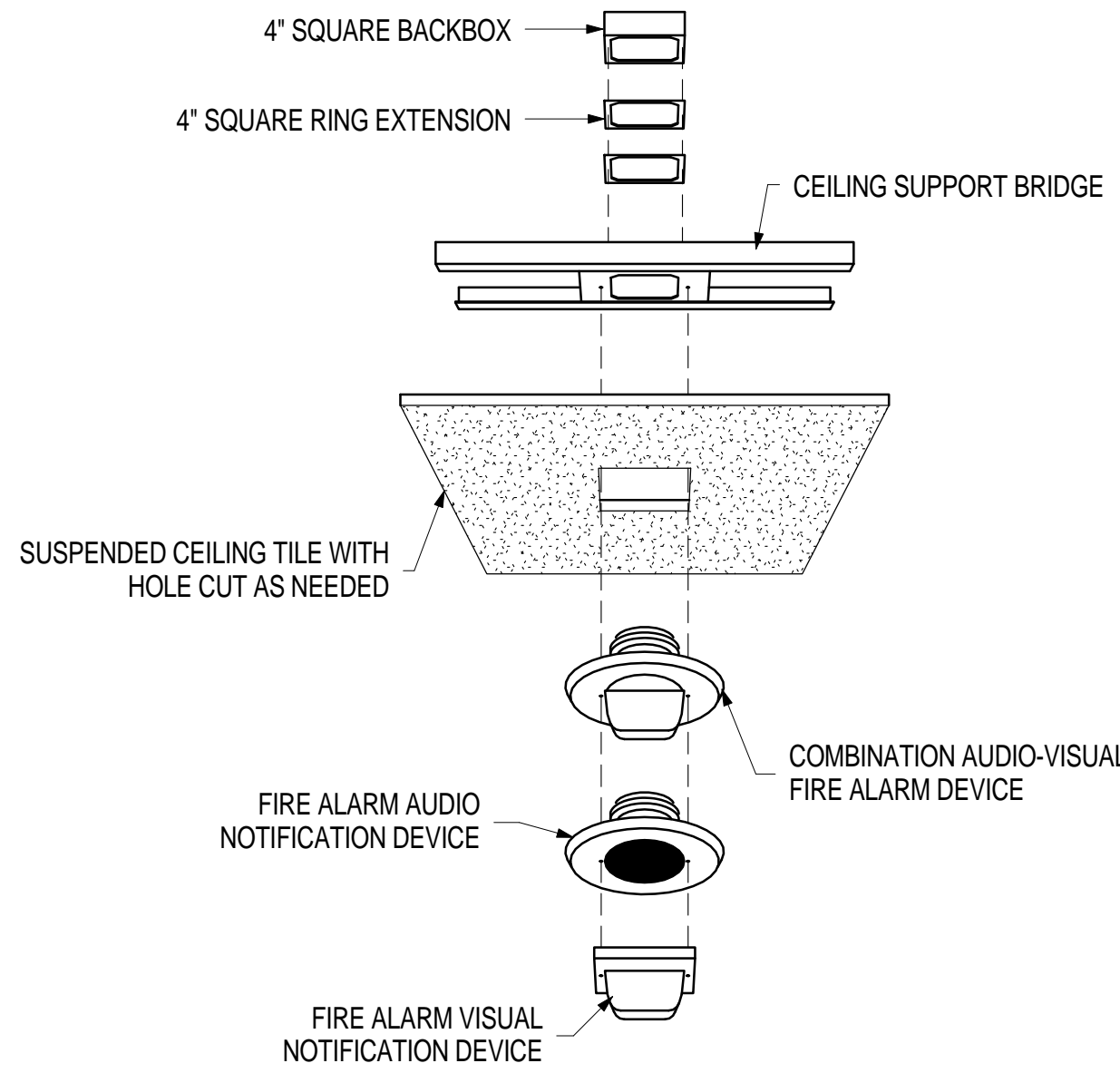
ONE EIGHTH INCH - ONE FOOT (1/8" = 1'-0")



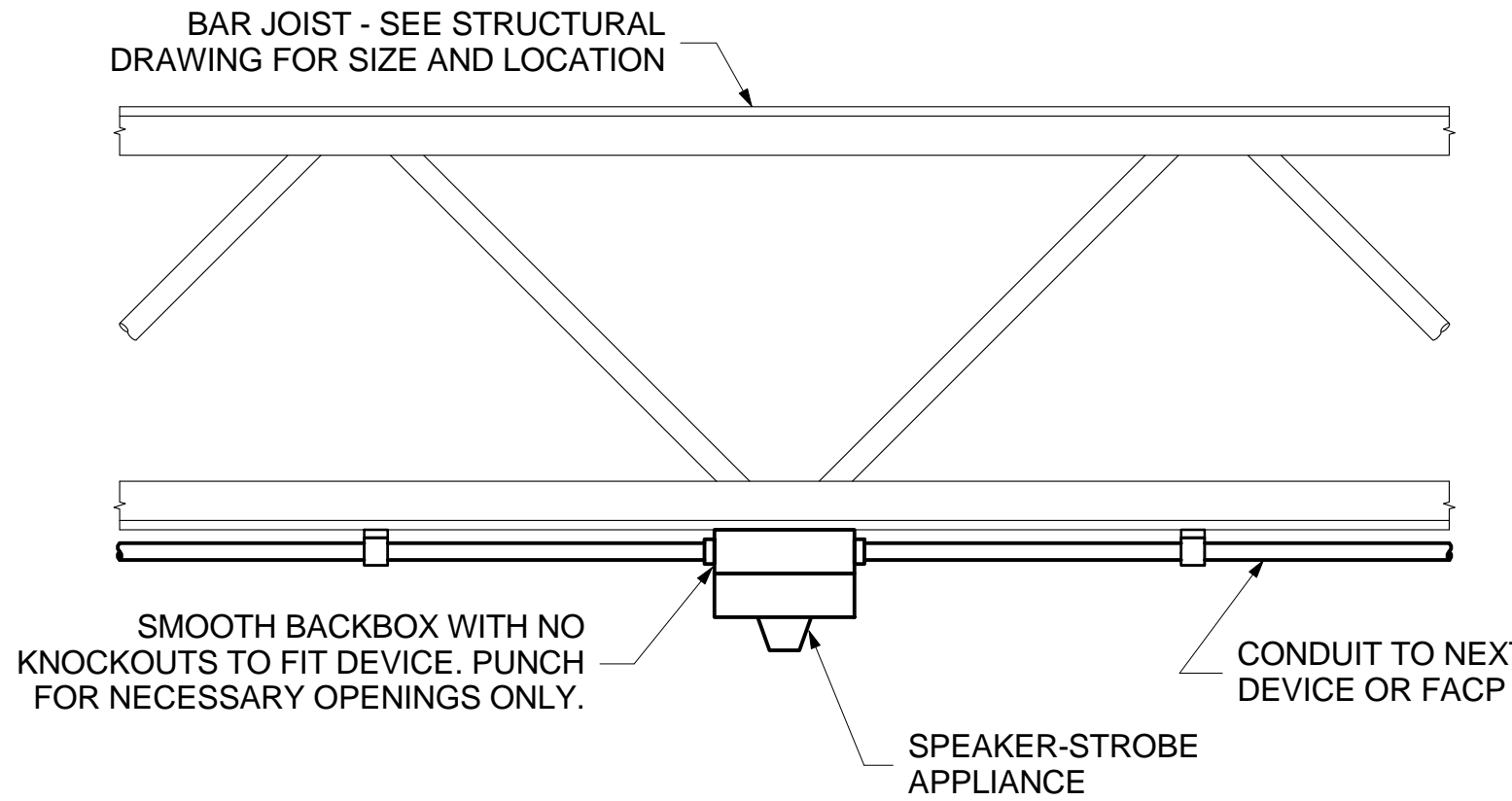
1 MOUNTING OF MANUAL PULL STATION
FA501 NOT TO SCALE



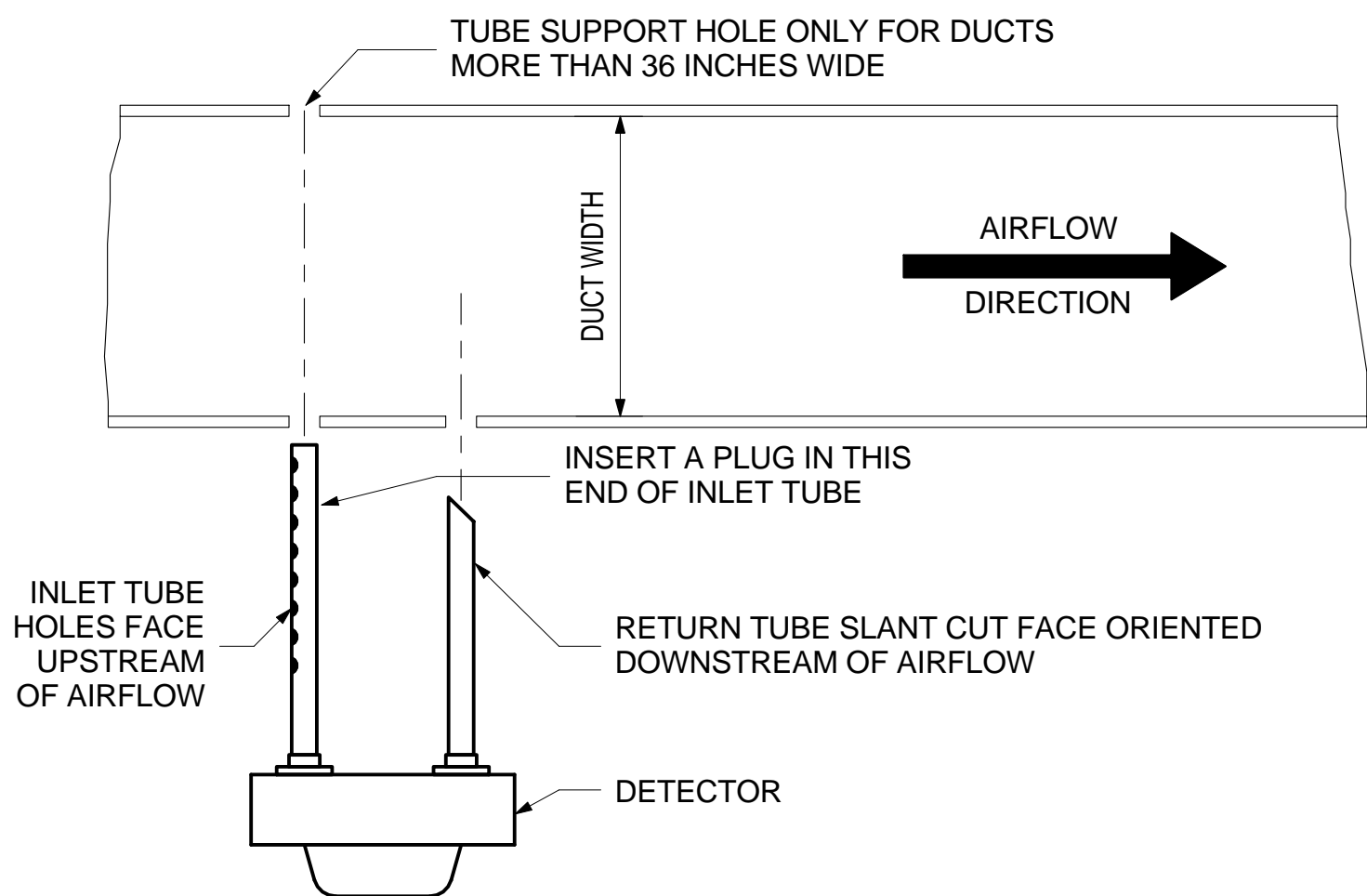
2 MOUNTING OF NOTIFICATION APPLIANCE
FA501 NOT TO SCALE



3 MOUNTING OF APPLIANCE IN SUSPENDED CEILING
FA501 NOT TO SCALE



4 INSTALLATION OF NOTIFICATION APPLIANCE ON BAR JOIST
FA501 NOT TO SCALE



NOTES:
1. COMPLY WITH ALL MANUFACTURER'S INSTRUCTIONS. LOCATE DETECTORS IN COMPLIANCE WITH NFPA 72.
2. FLEXIBLE CONDUIT NOT EXCEEDING 72 INCHES IN LENGTH SHALL BE INSTALLED FOR CONNECTIONS TO DUCT SMOKE DETECTORS.

5 INSTALLATION OF DUCT SMOKE DETECTOR
FA501 NOT TO SCALE

Additions:	Date
Revisions:	Date
SCHEMATIC DESIGN (30%) SUBMISSION	03/25/15
DESIGN DEVELOPMENT (60%) SUBMISSION	09/11/15
CONSTRUCTION DOCUMENTS (90% SUBMISSION)	11/23/15
BID DOCUMENTS SUBMISSION	03/17/16

ARCHITECT / ENGINEERS / CONSULTANTS:		
OKKS Studios, Inc. 2 Wisconsin Circle / Suite 820 Chevy Chase, MD 20815-7003 Tel: (301) 718-0080 Fax: (301) 718-9920 www.okksstudios.com	Woods Peacock Engineering Consultants 5250 Cherokee Avenue, Suite 420 Alexandria, VA 22312-2052 Tel: (703) 658-4400 Fax: (703) 658-4404	Nobis Engineering, Inc. 20410 Century Boulevard, Suite 230 Germantown, MD 20874 Tel: (301) 528-2010
Henry Adams Consulting Engineers, LLC 600 Baltimore Avenue, 4th Floor Baltimore, MD 21204 Tel: (410) 296-6500 Fax: (410) 296-6501	The Protection Engineering Group 2809 Boston Street, Suite 7 Baltimore, MD 21224 USA Tel: (443) 708-4096	



Approved:

Approved: Chief, Facilities and Engineering
Approved: Associate Chief for Maintenance And Operations, Perry Point
Approved: Engineering Projects Supervisor
Approved: Infection Control Officer

Drawing Title FIRE ALARM DETAILS
Approved: Associate Director for Operations
Approved: Director, Medical Center

FULLY SPRINKLERED

Project Title WAREHOUSE RENOVATION & EXPANSION	Date 03/17/16
Scale NOT TO SCALE	VA Project Number 512-530
Building Number 360	Drawing Number FA501
Checked CKC	
Drawn ACJ	
Location PERRY POINT, MD	



