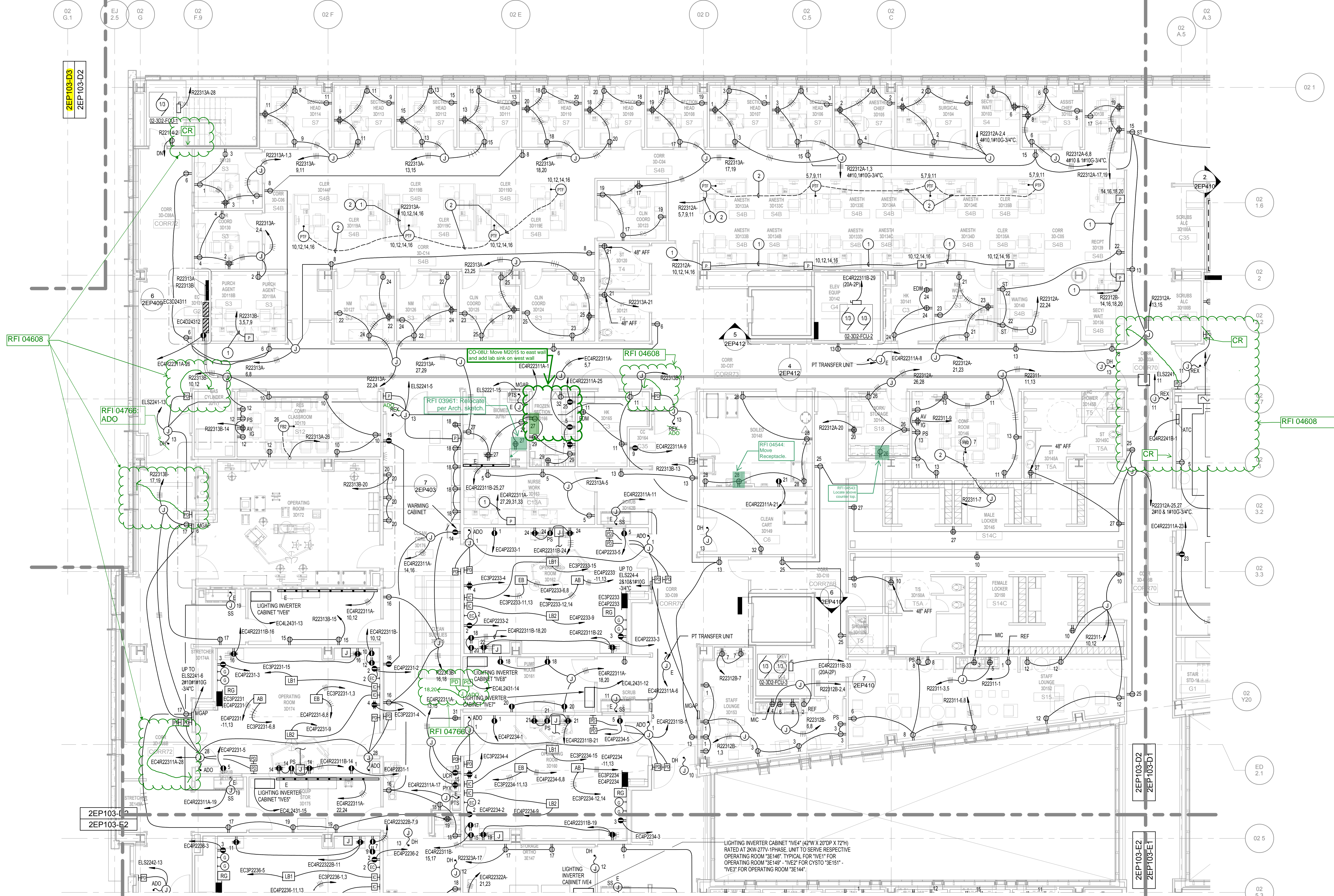


Pre-Bid RFI EWP-08-0810:
Refer to 1/2ES503 for
Description of "RG" and
"G" symbols.



1 LEVEL 03 - Power - AREA D2
1/8" = 1'-0"

CONSULTANTS:

DESMAN ASSOCIATES / PARKING
CODE CONSULTANTS, INC. / CODE CONSULTANT
THE SEXTANT GROUP / AV & ACOUSTICAL
HAMMER DESIGN ASSOCIATES / FOOD SERVICE
PYBURN & ODOM / ABATEMENT
TATA & HOWARD / TANK CONSULTANT
I.S.C. GROUP, INC. / IRRIGATION
DAN EUSER WATER ARCHITECTURE, INC. / WATER FEATURE

ARCHITECT/ENGINEERS:

studio **NOVA**
SCHRENK & PETERSON CONSULTING ENGINEERS / CIVIL
KORDA/NEEMTH ENGINEERING / STRUCTURAL
BR+A CONSULTING ENGINEERS / MECH. ELECT. PLUMBING, LOW VOLTAGE
ARCHITECTURAL ENGINEERING / PLUMBING
SCALES ASSOCIATES / FIRE PROTECTION
BR+A CONSULTING ENGINEERS / LOW VOLTAGE

DRAWING TITLE
BLDG 2 THIRD FLOOR POWER PLAN- AREA D2

APPROVED: PROJECT DIRECTOR

Yadda Jandus

PROJECT TITLE
SLVHCS REPLACEMENT MEDICAL
CENTER PROJECT

LOCATION
NEW ORLEANS, LOUISIANA

DATE
February 29, 2012

CHECKED
LMD

DRAWN
ADS

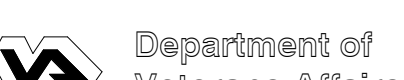
PROJECT NUMBER
629-HS2-401
DOCUMENT SET PACKAGE
WP_08

DRAWING NUMBER
2EP103-D2



CONSTRUCTION DOCUMENTS 1
FULLY SPRINKLERED

OFFICE OF
CONSTRUCTION
AND FACILITIES
MANAGEMENT



Pre-Bid RFI EWP-08-0810:
Refer to 1/2ES503 for
Description of "RG" and
"G" symbols.

RFI 07367: Cap and blank
plate PDs for 3D-C08B.2.
Power for ADO should be
used for door holders.

RFI 04608

1 LEVEL 03 - Power - AREA E2
1/8" = 1'-0"

CONSULTANTS:

DESMAN ASSOCIATES / PARKING
CODE CONSULTANTS, INC. / CODE CONSULTANT
THE SEXTANT GROUP / AV & ACOUSTICAL
HAMMER DESIGN ASSOCIATES / FOOD SERVICE
PYBURN & ODOM / ABATEMENT
TATA & HOWARD / TANK CONSULTANT
I.S.C. GROUP, INC. / IRRIGATION
DAN EUSER WATER ARCHITECTURE, INC. / WATER FEATURE

ARCHITECT/ENGINEERS:

studio **NOVA**
SCHRENK & PETERSON CONSULTING ENGINEERS / CIVIL
KORDA/NEETH ENGINEERING / STRUCTURAL
BR+A CONSULTING ENGINEERS / MECH. ELECT. PLUMBING, LOW VOLTAGE
ARCHITECTURAL ENGINEERING / PLUMBING
SCALES ASSOCIATES / FIRE PROTECTION
BR+A CONSULTING ENGINEERS / LOW VOLTAGE

DRAWING TITLE
BLDG 2 THIRD FLOOR POWER PLAN- AREA E2

APPROVED: PROJECT DIRECTOR

Yadda Jandus

PROJECT TITLE
SLVHCS REPLACEMENT MEDICAL
CENTER PROJECT

LOCATION
NEW ORLEANS, LOUISIANA

DATE
February 29, 2012

CHECKED
LMD

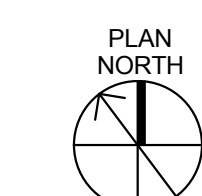
DRAWN
ADS

PROJECT NUMBER
629-HS2-401
DOCUMENT SET PACKAGE
WP_08

DRAWING NUMBER
2EP103-E2

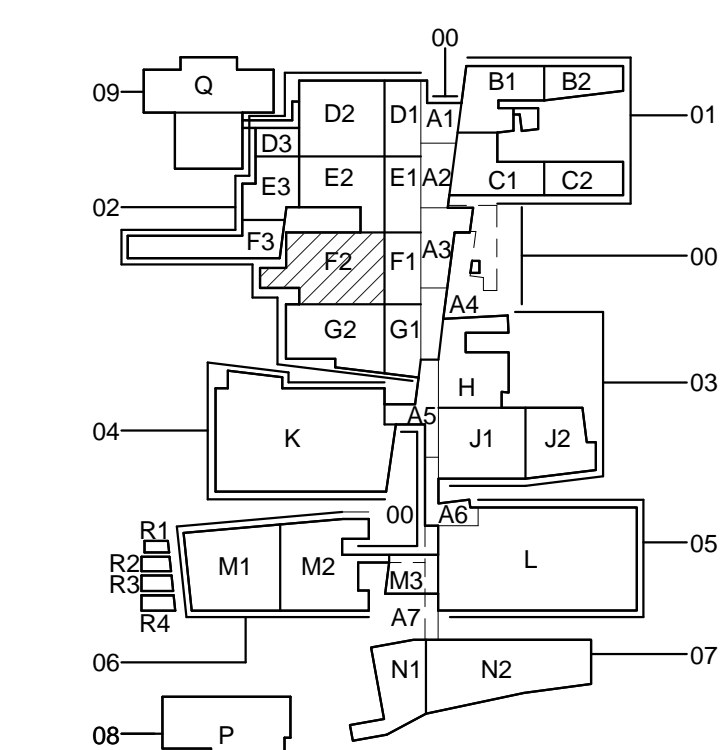
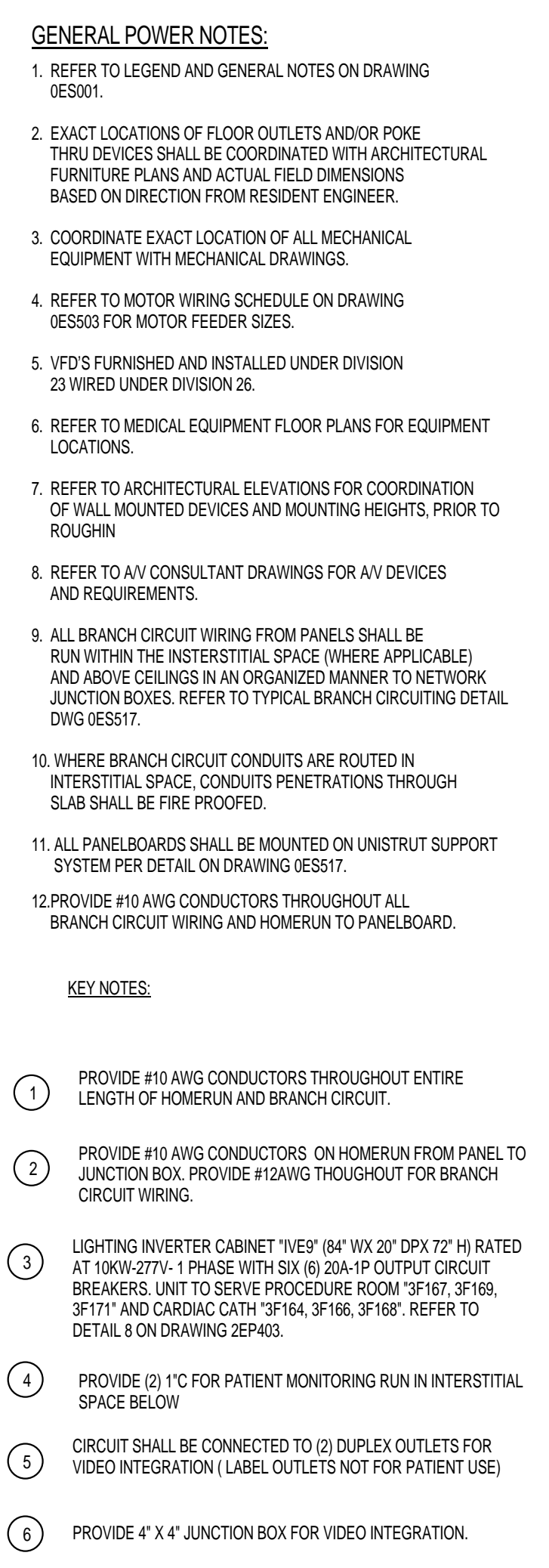
OFFICE OF
CONSTRUCTION
AND FACILITIES
MANAGEMENT

Department of
Veterans Affairs



CONSTRUCTION DOCUMENTS 1
FULLY SPRINKLERED

**Pre-Bid RFI EWP-08-0810:
Refer to 1/2ES503 for
Description of "RG" and
"G" symbols.**



CONSULTANTS:

DESMAN ASSOCIATES / PARKING
CODE CONSULTANTS, INC. / CODE CONSULTANT
THE SEXTANT GROUP / AV & ACUSTICAL
HAMMER DESIGN ASSOCIATES / FOOD SERVICE
PYBURN & ODOM / ABATEMENT
TATA & HOWARD / TANK CONSULTANT
I.S.C. GROUP, INC./ IRRIGATION
DAN EUSER WATER ARCHITECTURE, INC./ WATER FEATURE

ARCHITECT/ENGINEERS:

studio**NOVA**

SCHRENK & PETERSON CONSULTING ENGINEERS / CIVIL
KORDA/NEMETH ENGINEERING / STRUCTURAL
BR+A CONSULTING ENGINEERS / MECH. ELECT. PLUMBING, LOW VOLTAGE
ARCHITECTURAL ENGINEERING / PLUMBING
SCALES ASSOCIATES / FIRE PROTECTION
BR+A CONSULTING ENGINEERS / LOW VOLTAGE


DRAWING TITLE

BLDG 2 THIRD FLOOR POWER PLAN- AREA F2

APPROVED: PROJECT DIRECTOR

Jade Sanders

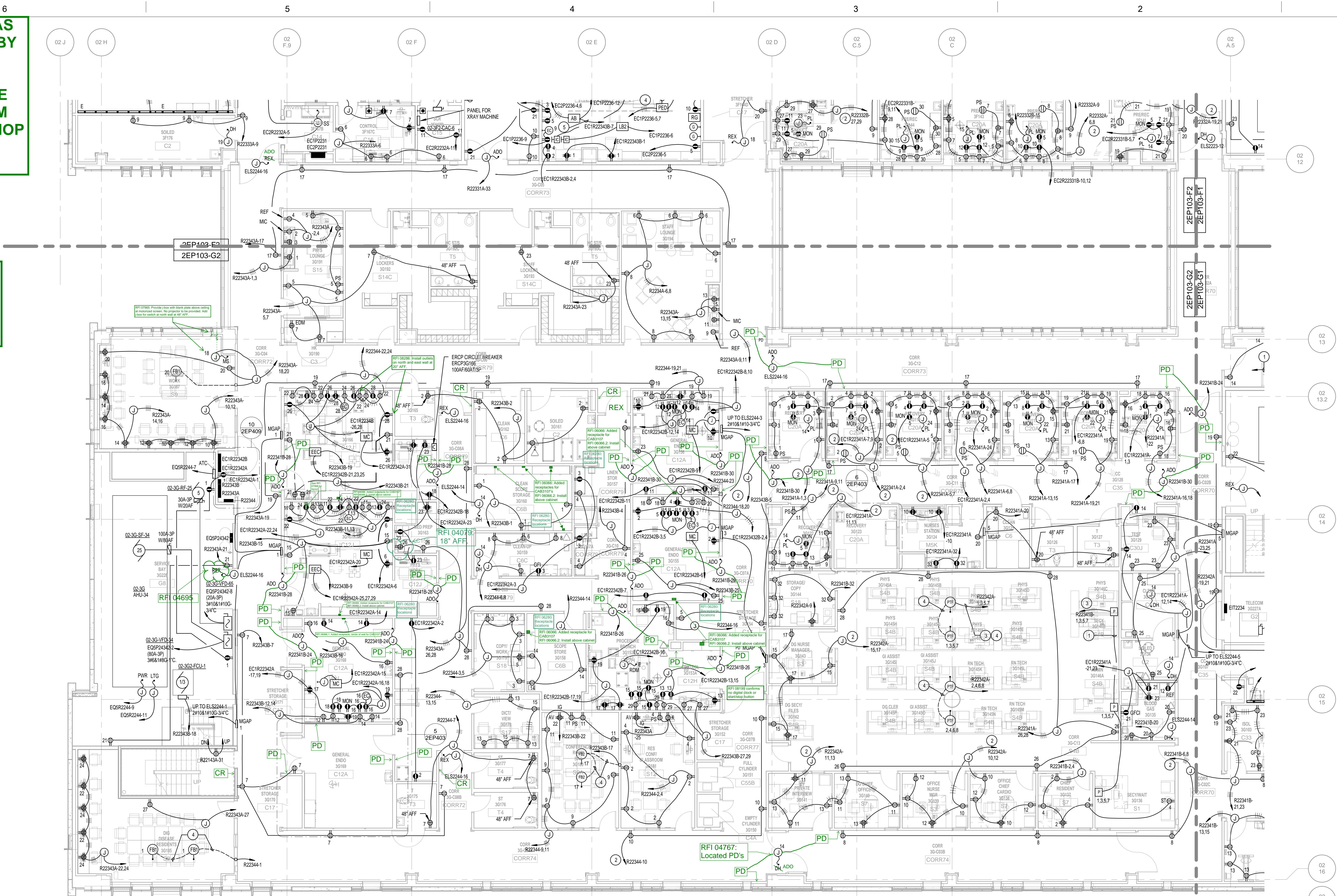
PROJECT TITLE		
SLVHCS REPLACEMENT MEDICAL CENTER PROJECT		
LOCATION		
NEW ORLEANS, LOUISIANA		
DATE	CHECKED	DRAWN
February 29, 2012	LMD	ADS

POLY SPRINKLERED	
PROJECT NUMBER 629-HS2-401	BUILDING NUMBER 2
<div> <div> OFFICE OF CONSTRUCTION AND FACILITIES MANAGEMENT </div> <div>  Department of Veterans Affairs </div> </div>	
DOCUMENT SET PACKAGE WP_08	
DRAWING NUMBER 2EP103-F2	

REVIEWS:	DATE	DAN EUSER WATER ARCHITECTURE, INC. / WATER FEATURE		BR+A CONSULTING ENGINEERS / LOW VOLTAGE		February 29, 2012	LMD	ADS		
VA FORM 08-6231										

THIS DRAWING HAS BEEN AFFECTED BY THE BIM COORDINATION PROCESS. PLEASE REFER TO THE BIM COORDINATED SHOP DRAWINGS FOR DETAILS.

RFI 04695: All CR'S AND PD'S ADDED TO THIS PAGE



- GENERAL POWER NOTES:**
1. REFER TO LEGEND AND GENERAL NOTES ON DRAWING 0200.
 2. EXACT LOCATIONS OF FLOOR OUTLETS AND/OR POLE THRU DEVICES SHALL BE COORDINATED WITH ARCHITECTURAL FURNITURE PLANS AND ACTUAL FIELD DIMENSIONS BASED ON DIRECTION FROM RESIDENT ENGINEER.
 3. COORDINATE EXACT LOCATION OF ALL MECHANICAL EQUIPMENT WITH MECHANICAL DRAWINGS.
 4. REFER TO MOTOR WIRING SCHEDULE ON DRAWING 0200 FOR MOTOR FEEDER SIZES.
 5. VFD'S FURNISHED AND INSTALLED UNDER DIVISION 23 WIRING UNDER DIVISION 26.
 6. REFER TO MEDICAL EQUIPMENT FLOOR PLANS FOR EQUIPMENT LOCATIONS.
 7. REFER TO ARCHITECTURAL ELEVATIONS FOR COORDINATION OF WALL MOUNTED DEVICES AND MOUNTING HEIGHTS. PRIOR TO ROUGHIN.
 8. REFER TO AV CONSULTANT DRAWINGS FOR AV DEVICES AND REQUIREMENTS.
 9. ALL BRANCH CIRCUIT WIRING FROM PANELS SHALL BE RUN WITHIN THE INTERSTITIAL SPACE (WHERE APPLICABLE) AND ABOVE CEILING IN AN ORGANIZED MANNER TO NETWORK JUNCTION BOXES. REFER TO TYPICAL BRANCH CIRCUITING DETAIL DWG 02017.
 10. WHERE BRANCH CIRCUIT CONDUITS ARE ROUTED IN INTERSTITIAL SPACE, CONDUITS PENETRATIONS THROUGH SLAB SHALL BE FIRE PROOFED.
 11. ALL PANELBOARDS SHALL BE MOUNTED ON UNISTRUT SUPPORT SYSTEM PER DETAIL ON DRAWING 02017.
 12. PROVIDE #10 AWG CONDUCTORS THROUGHOUT ALL BRANCH CIRCUIT WIRING AND HOMERUN TO PANELBOARD.

- KEY NOTES:**
1. PROVIDE #10 AWG CONDUCTORS THROUGHOUT ENTIRE LENGTH OF HOMERUN AND BRANCH CIRCUIT.
 2. PROVIDE #10 AWG CONDUCTORS ON HOMERUN FROM PANEL TO JUNCTION BOX. PROVIDE #12 AWG THROUGHOUT FOR BRANCH CIRCUIT WIRING.
 3. BRANCH CIRCUIT WIRING SERVING PARTITION SYSTEM SHALL BE FOUR CIRCUIT #12, 2#12G & 2#10 NEUTRALS. REFER TO MANUFACTURER'S WIRING DIAGRAM.
 4. RUN BRANCH CIRCUITS IN ACCESSIBLE CEILING SPACE OF FLOOR BELOW AND UP NEAREST WALL TO ABOVE ACCESSIBLE CEILING. PROVIDE BRANCH CIRCUIT AS INDICATED ON PLAN.

1 LEVEL 03 - Power - AREA G2
1/8" = 1'-0"



CONSTRUCTION DOCUMENTS 1
FULLY SPRINKLERED

CONSULTANTS:

DESMAN ASSOCIATES / PARKING
CODE CONSULTANTS, INC. / CODE CONSULTANT
THE SEXTANT GROUP / AV & ACOUSTICAL
HAMMER DESIGN ASSOCIATES / FOOD SERVICE
PYBURN & ODOM / ABATEMENT
TATA & HOWARD / TANK CONSULTANT
I.S.C. GROUP, INC. / IRRIGATION
DAN EUSER WATER ARCHITECTURE, INC. / WATER FEATURE



ARCHITECT/ENGINEERS:

studio **NOVA**
SCHRENK & PETERSON CONSULTING ENGINEERS / CIVIL
KORDA/NEUMETH ENGINEERING / STRUCTURAL
BR+A CONSULTING ENGINEERS / MECH. ELECT. PLUMBING, LOW VOLTAGE
ARCHITECTURAL ENGINEERING / PLUMBING
SCALES ASSOCIATES / FIRE PROTECTION
BR+A CONSULTING ENGINEERS / LOW VOLTAGE

DRAWING TITLE
BLDG 2 THIRD FLOOR POWER PLAN- AREA G2

APPROVED: PROJECT DIRECTOR

Yadd Jandus

PROJECT TITLE
SLVHCS REPLACEMENT MEDICAL
CENTER PROJECT

LOCATION
NEW ORLEANS, LOUISIANA

DATE
February 29, 2012

CHECKED
LMD

DRAWN
ADS

PROJECT NUMBER
629-HS2-401
DOCUMENT SET PACKAGE
WP_08

DRAWING NUMBER

2EP103-G2

BUILDING NUMBER
2

OFFICE OF
CONSTRUCTION
AND FACILITIES
MANAGEMENT



REVISIONS:

DATE

VA FORM 08-6231