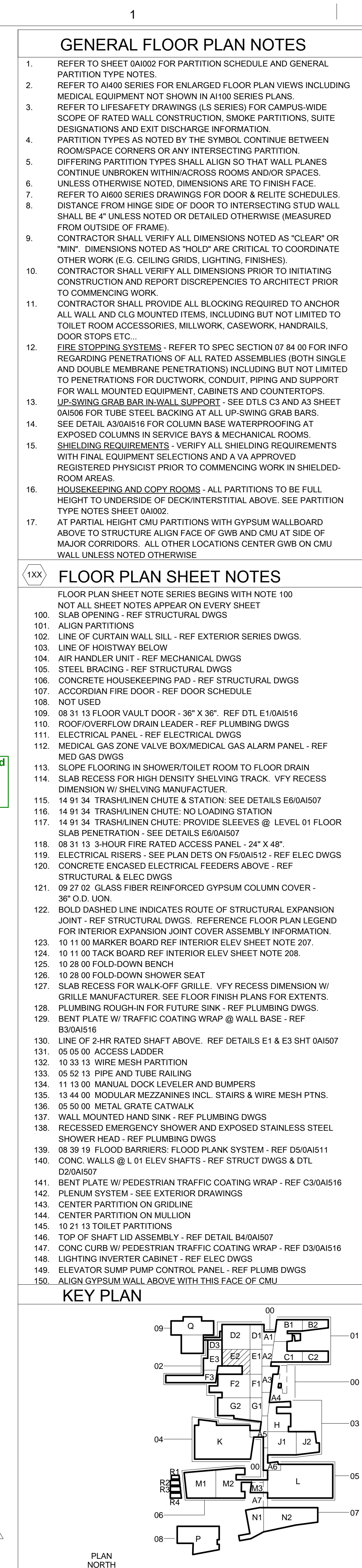
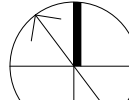

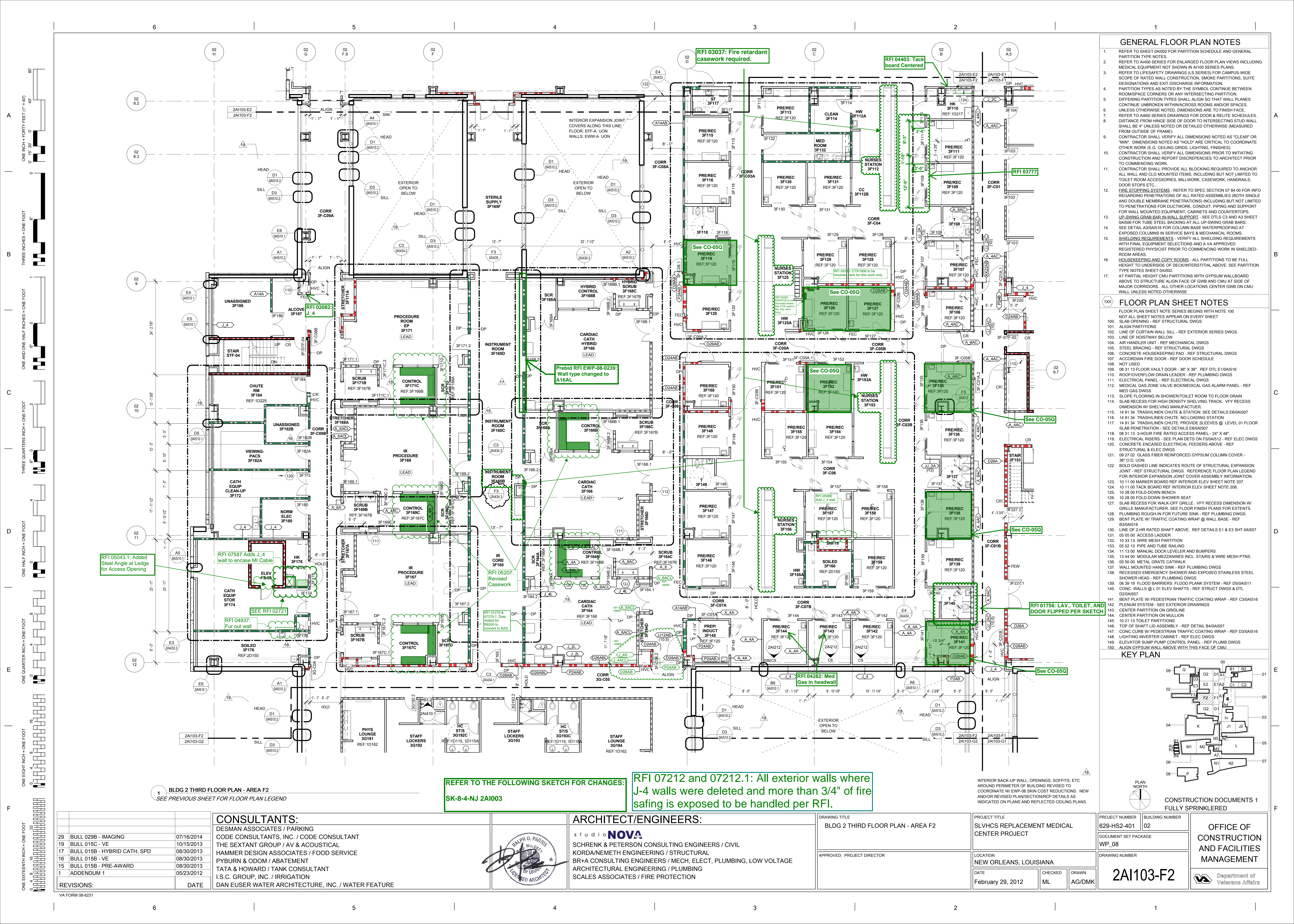


INTERIOR BACK-UP WALL, OPENINGS, SOFFITS, ETC
AROUND PERIMETER OF BUILDING REVISED TO
COORDINATE W/ EWP-06 SKIN COST REDUCTIONS. NEW
AND/OR REVISED PLAN/SECTION/RCP DETAILS AS
INDICATED ON PLANS AND REFLECTED CEILING PLANS.

 Department of
Veterans Affairs



		<h1>CONSTRUCTION DOCUMENTS 1</h1> <h2>FULLY SPRINKLERED</h2>	
PROJECT NUMBER 629-HS2-401		BUILDING NUMBER 02	
DOCUMENT SET PACKAGE WP_08		<h1>OFFICE OF CONSTRUCTION AND FACILITIES MANAGEMENT</h1>	
DRAWING NUMBER <h1>2A103-E2</h1>			
		Department of Veterans Affairs	



All noted PD's & CR's on this page were either added, removed, clarified or relocated per RFI 04695

RFI 07212 and 07212.1: All exterior walls where J-4 walls were deleted and more than 3/4" of fire safing is exposed to be handled per RFI.

REFER TO SKETCH: SK-8-1-NJ-2-AI-103-G2-1

RFI 06254: Female Staff Lockers

RFI 02082: A 6AC

RFI 07435: Install D24A or P24A wall and align with electrical closet.

RFI 0584: Shaft wall to be coordinated to fit duct risers

RFI 04422: Marker board 6'-4" from West wall to C/L

RFI 02966.1: TPO

RFI 03037: Fire retardant casework required.

SEE RFI 05314: Shifts wall and sink 20" North to accommodate foot pedals and bedpan washer

SEE RFI 02746 - EXPAND COLUMN WRAP 3" EAST TO ACCOMMODATE 6" GW RISER

REFER TO THE FOLLOWING SKETCH FOR CHANGES: SK-8-4-NJ 2AI003

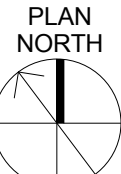
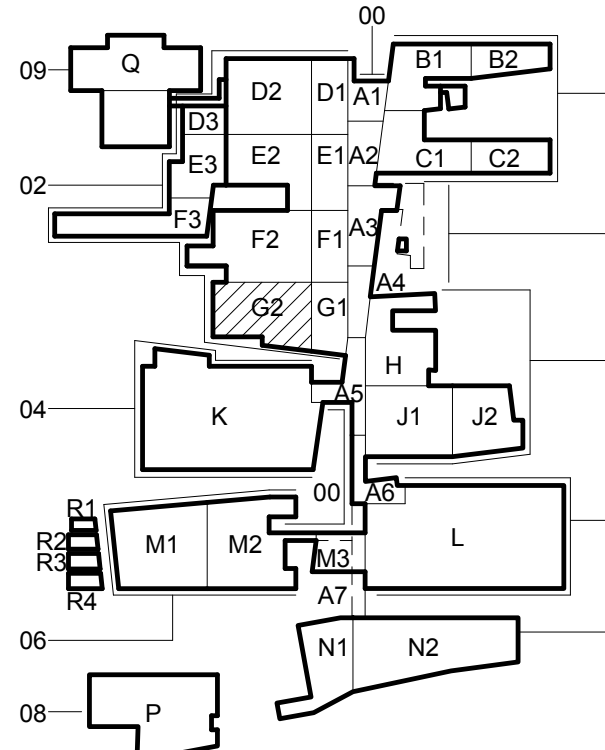
GENERAL FLOOR PLAN NOTES

- REFER TO SHEET 0A102 FOR PARTITION SCHEDULE AND GENERAL PARTITION TYPE NOTES.
- REFER TO A100 SERIES FOR ENLARGED FLOOR PLAN VIEWS INCLUDING MEDICAL EQUIPMENT NOT SHOWN IN A100 SERIES PLANS.
- REFER TO LIFESAFETY DRAWINGS (LS SERIES) FOR CAMPUS-WIDE SCOPE OF RATED WALL CONSTRUCTION, SMOKE PARTITIONS, SUITE DESIGNATIONS AND EXIT DISCHARGE INFORMATION.
- PARTITION TYPES AS NOTED BY THE SYMBOL CONTINUE BETWEEN ROOM/SPACE CORNERS OR ANY INTERSECTING PARTITION.
- DIFFERING PARTITION TYPES SHALL ALIGN SO THAT WALL PLANES CONTINUE UNBROKEN WITHIN ROOMS AND/OR SPACES, UNLESS OTHERWISE NOTED. DIMENSIONS ARE TO FINISH FACE.
- REFER TO A100 SERIES DRAWINGS FOR DOOR & REITUE SCHEDULES. DISTANCE FROM HINGE SIDE OF DOOR TO INTERSECTING STUD WALL SHALL BE 4" UNLESS NOTED OR DETAILED OTHERWISE (MEASURED FROM OUTSIDE OF FRAME).
- CONTRACTOR SHALL VERIFY ALL DIMENSIONS NOTED AS "CLEAR" OR "MIN". DIMENSIONS NOTED AS "HOLD" ARE CRITICAL TO COORDINATE OTHER WORK (E.G. CEILING GRIDS, LIGHTING, FINISHES).
- CONTRACTOR SHALL VERIFY ALL DIMENSIONS PRIOR TO INITIATING CONSTRUCTION AND REPORT DISCREPANCIES TO ARCHITECT PRIOR TO COMMENCING WORK.
- CONTRACTOR SHALL PROVIDE ALL BLOCKING REQUIRED TO ANCHOR ALL WALL AND C/L MOUNTED ITEMS, INCLUDING BUT NOT LIMITED TO TOILET ROOM ACCESSORIES, MILLWORK, CASEWORK, HANDRAILS, DOOR STOPS ETC.
- FIRE STOPPING SYSTEMS - REFER TO SPEC SECTION 07 94 00 FOR INFO REGARDING PENETRATIONS OF ALL RATED ASSEMBLIES (BOTH SINGLE AND DOUBLE MEMBRANE PENETRATIONS) INCLUDING BUT NOT LIMITED TO PENETRATIONS FOR DUCTWORK, CONDUIT, PIPING AND SUPPORT FOR WALL MOUNTED EQUIPMENT, CABINETS AND COUNTERTOPS.
- UP-SWING GRAB BARS/WALL SUPPORT - SEE DTL S C3 AND A3 SHEET 0A106 FOR TUBE STEEL BACKING AT ALL UP-SWING GRAB BARS.
- SEE DETAIL A3/0A156 FOR COLUMN BASE WATERPROOFING AT EXPOSED COLUMNS IN SERVICE BAYS & MECHANICAL ROOMS.
- SHIELDING REQUIREMENTS - VERIFY ALL SHIELDING REQUIREMENTS WITH FINAL EQUIPMENT SELECTIONS AND A VA APPROVED REGISTERED PHYSICIST PRIOR TO COMMENCING WORK IN SHIELDED-ROOM AREAS.
- HOUSEKEEPING AND COPY ROOMS - ALL PARTITIONS TO BE FULL HEIGHT TO UNDERSIDE OF DECK/INTERSTIAL ABOVE. SEE PARTITION TYPE NOTES SHEET 0A102.
- AT PARTIAL HEIGHT CMU PARTITIONS WITH GYPSUM WALLBOARD ABOVE TO STRUCTURE ALIGN FACE OF GWB AND CMU AT SIDE OF MAJOR CORRIDORS. ALL OTHER LOCATIONS CENTER GWB ON CMU WALL UNLESS NOTED OTHERWISE.

FLOOR PLAN SHEET NOTES

- FLOOR PLAN SHEET NOTE SERIES BEGINS WITH NOTE 100 NOT ALL SHEET NOTES APPEAR ON EVERY SHEET
- SLAB OPENING - REF STRUCTURAL DWGS
 - ALIGN PARTITIONS
 - LINE OF CURTAIN WALL SILL - REF EXTERIOR SERIES DWGS
 - LINE OF HOISTWAY BELOW
 - AIR HANDLER UNIT - REF MECHANICAL DWGS
 - STEEL BRACING - REF STRUCTURAL DWGS
 - CONCRETE HOUSEKEEPING PAD - REF STRUCTURAL DWGS
 - ACCORDIAN FIRE DOOR - REF DOOR SCHEDULE
 - NOT USED
 - 08 31 13 FLOOR VAULT DOOR - 36" X 36" - REF DTL E1/0A156
 - ROOF/OVERFLOW DRAIN LEADER - REF PLUMBING DWGS
 - ELECTRICAL PANEL - REF ELECTRICAL DWGS
 - MEDICAL GAS ZONE VALVE BOX/MEDICAL GAS ALARM PANEL - REF MED GAS DWGS
 - SLOPE FLOORING IN SHOWER/TOILET ROOM TO FLOOR DRAIN
 - SLAB RECESS FOR HIGH DENSITY SHELVING TRACK. VY RECESS DIMENSION W/ SHELVING MANUFACTURER.
 - 14 91 34 TRASHLINE CHUTE & STATION: SEE DETAIL S E6/0A1507
 - 14 91 34 TRASHLINE CHUTE: NO LOADING STATION
 - 14 91 34 TRASHLINE CHUTE: PROVIDE SLEEVES @ LEVEL 01 FLOOR SLAB PENETRATION - SEE DETAILS E6/0A1507
 - 08 31 13 3-HOUR FIRE RATED ACCESS PANEL - 24" X 48"
 - ELECTRICAL RISERS - SEE PLAN DETS ON F5/0A1512 - REF ELEC DWGS
 - CONCRETE ENCASED ELECTRICAL FEEDERS ABOVE - REF STRUCTURAL & ELEC DWGS
 - 27 02 02 GLASS FIBER REINFORCED GYPSUM COLUMN COVER - 36" O.D. UON
 - BOLD DASHED LINE INDICATES ROUTE OF STRUCTURAL EXPANSION JOINT - REF STRUCTURAL DWGS. REFERENCE FLOOR PLAN LEGEND FOR INTERIOR EXPANSION JOINT COVER ASSEMBLY INFORMATION.
 - 10 11 00 MARKER BOARD REF INTERIOR ELEV SHEET NOTE 207.
 - 10 11 00 TACK BOARD REF INTERIOR ELEV SHEET NOTE 208.
 - 10 28 00 FOLD-DOWN BENCH
 - 10 28 00 FOLD-DOWN SHOWER SEAT
 - SLAB RECESS FOR WALK-OFF GRILLE. VY RECESS DIMENSION W/ GRILLE MANUFACTURER. SEE FLOOR FINISH PLANS FOR EXTENTS.
 - PLUMBING ROUGH-IN FOR FUTURE SINK - REF PLUMBING DWGS.
 - BENT PLATE W/ TRAFFIC COATING WRAP @ WALL BASE - REF E3/0A1516
 - LINE OF 2-HR RATED SHAFT ABOVE. REF DETAILS E1 & E3 SHT 0A1507
 - 05 05 00 ACCESS LADDER
 - 10 33 13 WIRE MESH PARTITION
 - 05 52 13 PIPE AND TUBING
 - 11 13 00 MANUAL DOCK LEVELER AND BUMPERS
 - 13 44 00 MODULAR MEZZANINES INCL. STAIRS & WIRE MESH PTNS.
 - 05 50 00 METAL GRATE CATWALK
 - WALL MOUNTED HAND SINK - REF PLUMBING DWGS
 - RECESSED EMERGENCY SHOWER AND EXPOSED STAINLESS STEEL SHOWER HEAD - REF PLUMBING DWGS
 - 08 39 19 FLOOD BARRIERS: FLOOD PLANK SYSTEM - REF D5/0A1511
 - CONC. WALLS @ L 01 ELEV SHAFTS - REF STRUCT DWGS & DTL 02/0A1507
 - BENT PLATE W/ PEDESTRIAN TRAFFIC COATING WRAP - REF C3/0A1516
 - PLENUM SYSTEM - SEE EXTERIOR DRAWINGS
 - CENTER PARTITION ON GRIDLINE
 - CENTER PARTITION ON MULLION
 - 10 21 13 TOILET PARTITIONS
 - TOP OF SHAFT LID ASSEMBLY - REF DETAIL B4/0A1507
 - CONC CURB W/ PEDESTRIAN TRAFFIC COATING WRAP - REF D3/0A1516
 - LIGHTING INVERTER CABINET - REF ELEC DWGS
 - ELEVATOR SUMP PUMP CONTROL PANEL - REF PLUMB DWGS
 - ALIGN GYPSUM WALL ABOVE WITH THIS FACE OF CMU

KEY PLAN



CONSTRUCTION DOCUMENTS 1 FULLY SPRINKLERED

CONSULTANTS:

DESMAN ASSOCIATES / PARKING
CODE CONSULTANTS, INC. / CODE CONSULTANT
THE SEXTANT GROUP / AV & ACOUSTICAL
HAMMER DESIGN ASSOCIATES / FOOD SERVICE
PYBURN & ODOM / ABATEMENT
TATA & HOWARD / TANK CONSULTANT
I.S.C. GROUP, INC. / IRRIGATION
DAN EUSER WATER ARCHITECTURE, INC. / WATER FEATURE

ARCHITECT/ENGINEERS:

studio **NOVA**
SCHRENK & PETERSON CONSULTING ENGINEERS / CIVIL
KORDA/NEMETH ENGINEERING / STRUCTURAL
BR+A CONSULTING ENGINEERS / MECH. ELECT. PLUMBING, LOW VOLTAGE
ARCHITECTURAL ENGINEERING / PLUMBING
SCALES ASSOCIATES / FIRE PROTECTION

DRAWING TITLE
BLDG 2 THIRD FLOOR PLAN - AREA G2

APPROVED: PROJECT DIRECTOR

PROJECT TITLE
SLVHCS REPLACEMENT MEDICAL CENTER PROJECT

LOCATION
NEW ORLEANS, LOUISIANA

DATE
February 29, 2012

CHECKED
ML

DRAWN
AG/DMK

PROJECT NUMBER
629-HS2-401

02

DOCUMENT SET PACKAGE
WP_08

DRAWING NUMBER

2AI103-G2

OFFICE OF
CONSTRUCTION
AND FACILITIES
MANAGEMENT

