

D6

EQUIPMENT STORAGE 3E145

SCALE:

Install 15in from
corner of wall

A14A

HVC

Equipment Racks
located approx 33-
in apart. At each
rack install four
quadruplex
receptacles, and
eight data ports (4
wall plate
openings).

1' - 11"

A14

4A

UNASSIGNED
3F182B

A14

16

3F182B

3F182A

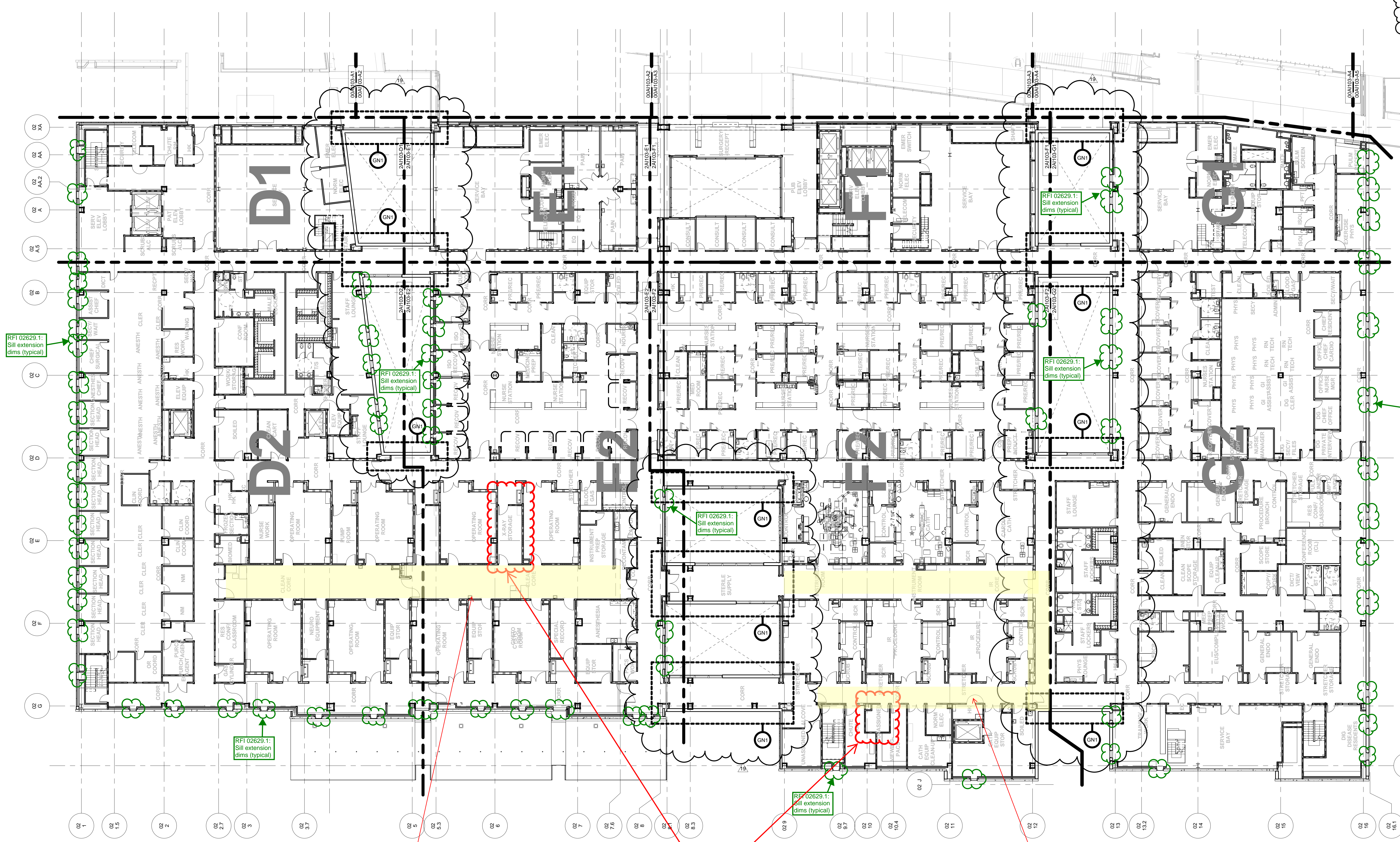
Install 15in from
corner of wall

GENERAL NOTES

GN1 REFER TO EWP06 BULL 010C FOR CW AT CONNECTORS. GLAZING HEAD/SILL HEIGHTS VARY & MAY NOT APPEAR IN PLAN VIEW DUE TO CUTTING PLANE.

WP08 GWB / LT GA MTL FRAMING CONTRACTOR TO COORDINATE W/ EWP06 CW CONTRACTOR FOR FINAL OPENING DIMENSIONS.

REFER TO WP08 AREA PLANS FOR TYPICAL INTERIOR DETAILS AT CONNECTOR OPENINGS.



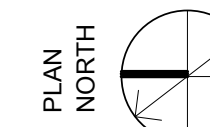
REFER TO THE FOLLOWING SKETCH FOR CHANGES:
SK-8-4-NJ 2A1003

Location of cable
raceway to
equipment room.

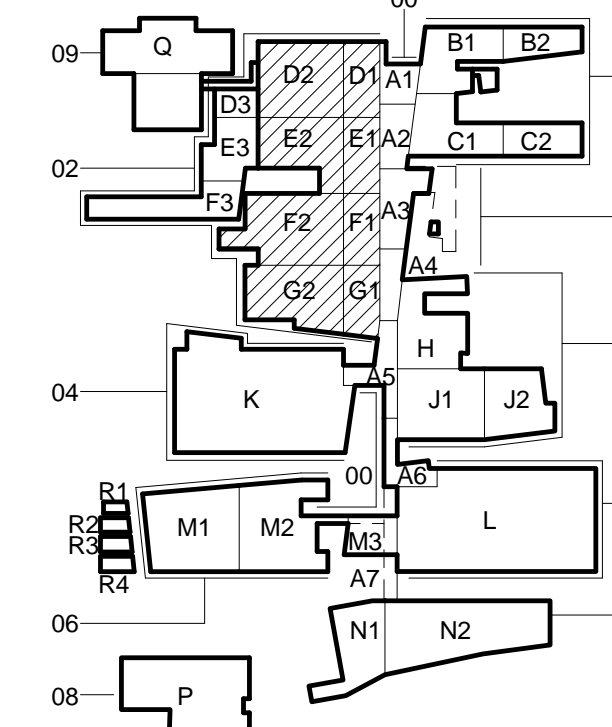
SEE RFI 03824 FOR CONTROL JOINT LOCATION

Location of
Integration Racks/
cabinets

Location of cable
raceway to
equipment room



1 BLDG 2 OVERALL THIRD FLOOR PLAN
SCALE: 1/16" = 1'-0"



CONSTRUCTION DOCUMENTS 1
FULLY SPRINKLERED

OFFICE OF
CONSTRUCTION
AND FACILITIES
MANAGEMENT



REVISIONS:	DATE
19 BULL 015C - VE	10/15/2013
15 BULL 015B - PRE-AWARD	08/30/2013

CONSULTANTS:
DESMAN ASSOCIATES / PARKING
CODE CONSULTANTS, INC. / CODE CONSULTANT
THE SEXTANT GROUP / AV & ACOUSTICAL
HAMMER DESIGN ASSOCIATES / FOOD SERVICE
PYBURN & ODOM / ABATEMENT
TATA & HOWARD / TANK CONSULTANT
I.S.C. GROUP, INC. / IRRIGATION
DAN EUSER WATER ARCHITECTURE, INC. / WATER FEATURE



ARCHITECT/ENGINEERS:
studio **NOVA**
SCHRENK & PETERSON CONSULTING ENGINEERS / CIVIL
KORDA/NEMETH ENGINEERING / STRUCTURAL
BR+A CONSULTING ENGINEERS / MECH. ELECT, PLUMBING, LOW VOLTAGE
ARCHITECTURAL ENGINEERING / PLUMBING
SCALES ASSOCIATES / FIRE PROTECTION

DRAWING TITLE
BLDG 2 OVERALL THIRD FLOOR PLAN

APPROVED: PROJECT DIRECTOR

PROJECT TITLE
SLV/HCS REPLACEMENT MEDICAL
CENTER PROJECT

LOCATION
NEW ORLEANS, LOUISIANA

DATE
February 29, 2012

CHECKED
ML

DRAWN
AG/DMK

PROJECT NUMBER
629-HS2-401

BUILDING NUMBER
02

DOCUMENT SET PACKAGE
WP_08

DRAWING NUMBER
2A1103

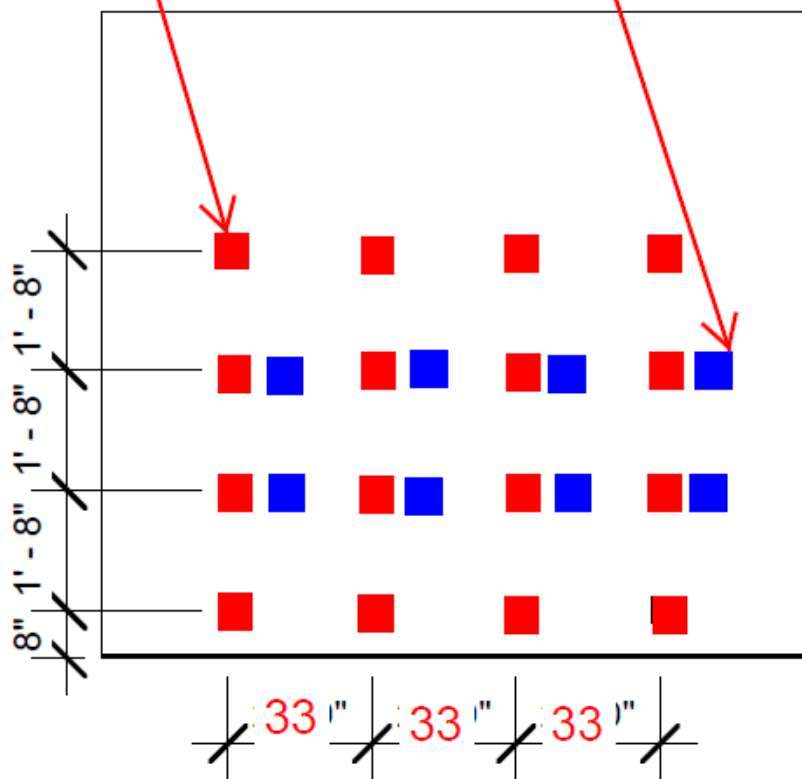
D5

SOILED TRANSITION 4D145

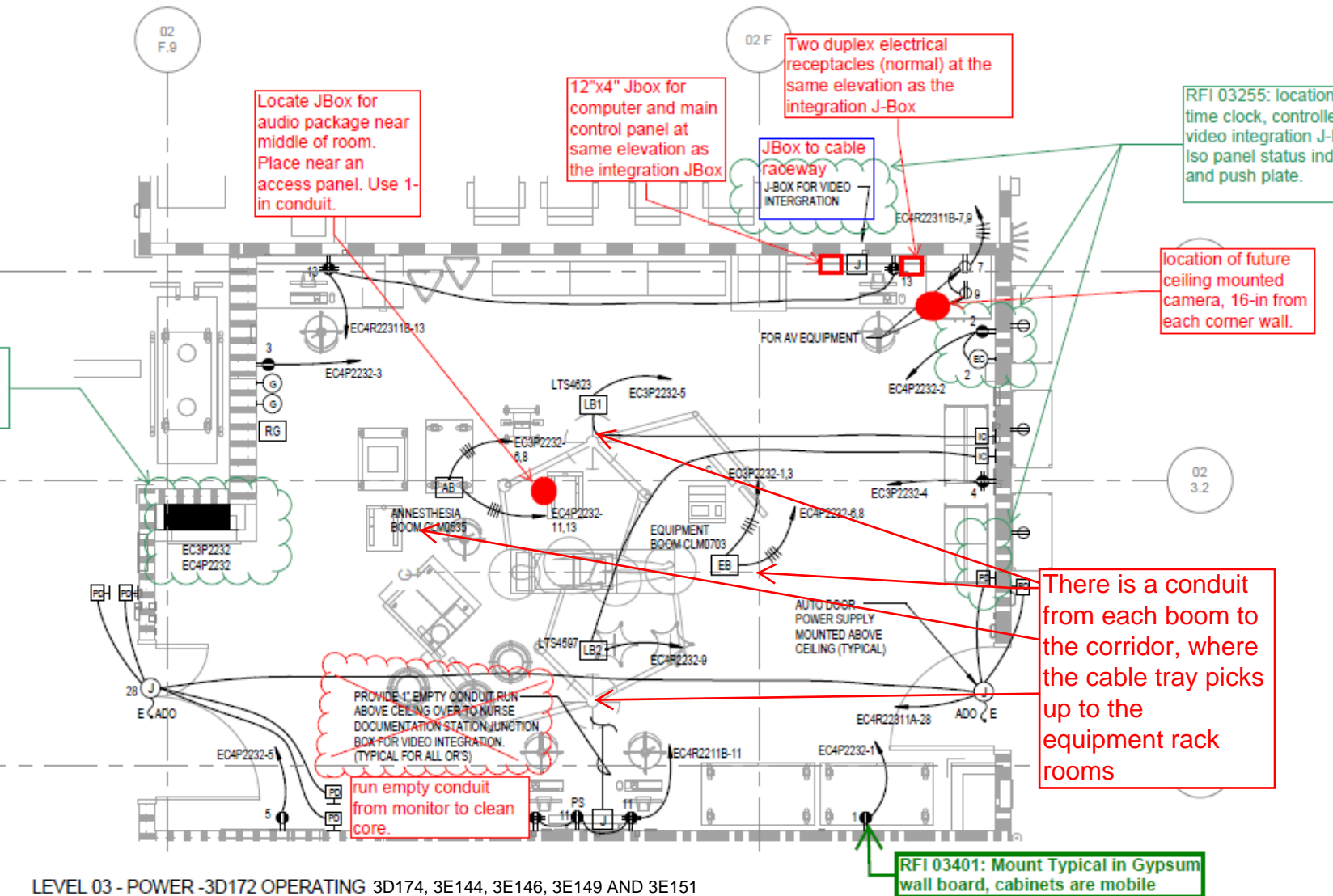
SCALE: 1/4" = 1'-0"

Qudruplex outlet

Data port



EQUIPMENT ROOM 3E145 POWER AND
DATA LAYOUT



LEVEL 03 - POWER - 3D172 OPERATING ROOM 3D174, 3E144, 3E146, 3E149 AND 3E151

1/4" = 1'-0"