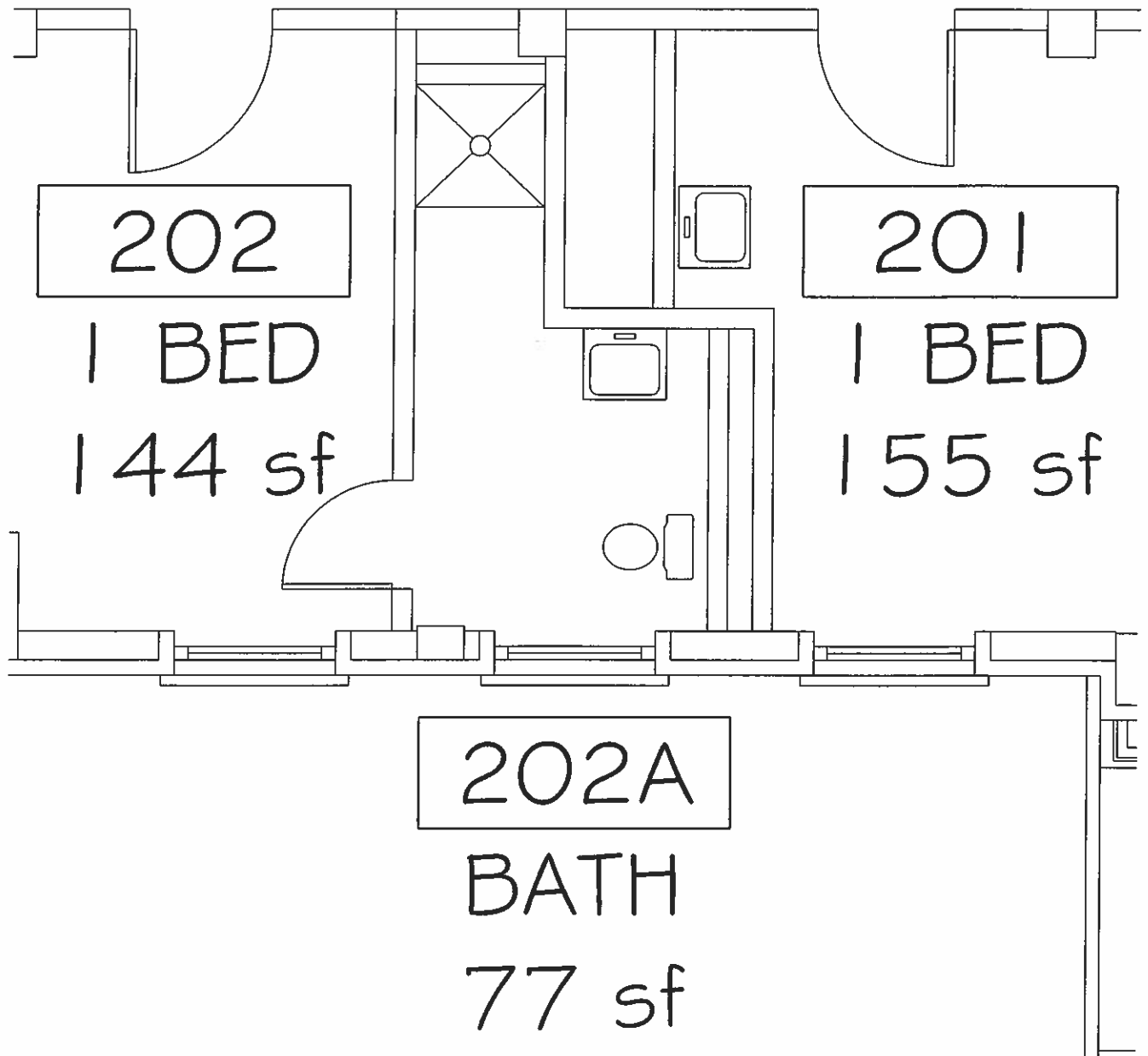

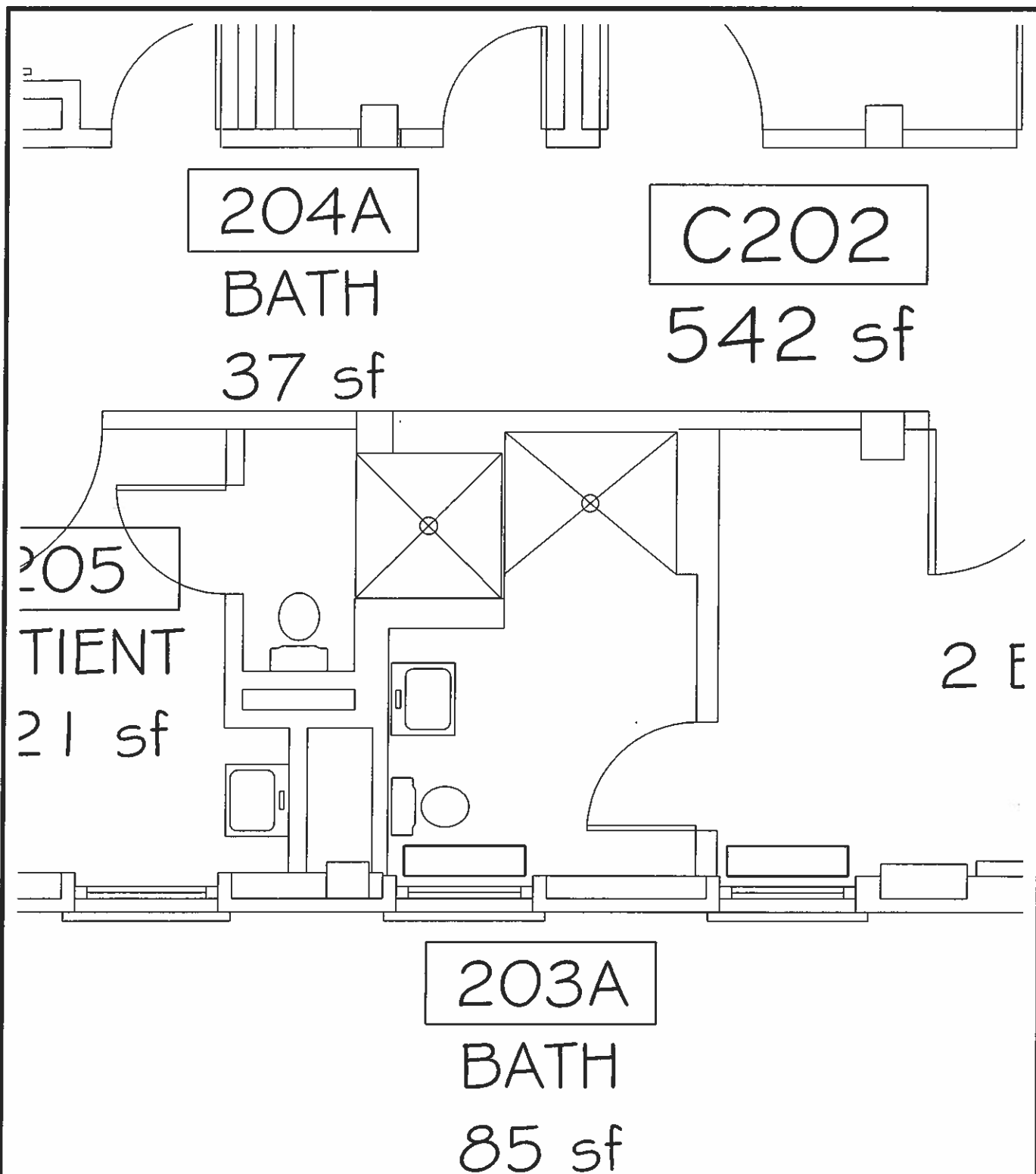



PRIMARY CIRCULATION CORRIDOR



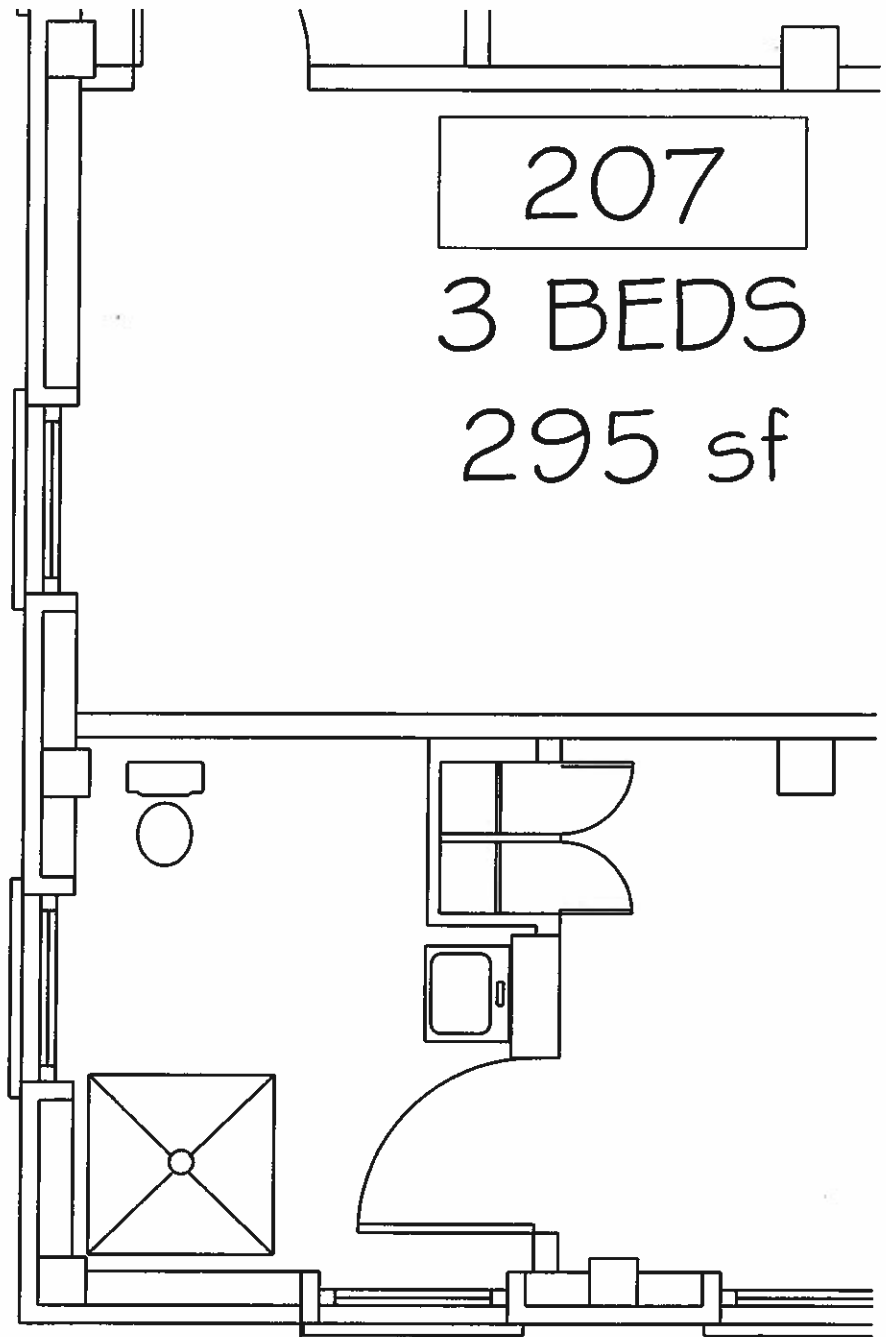
Drawing Title FLOOR PLAN	Project Title Renovate Patient Bathrooms		Project Number 564-12- 106	Engineering Service  Department of Veterans Affairs
			Building Number One (1)	
Approved Project Engineer	Location VA Health Care System of the Ozarks		Drawing Number AP200	Sheet 1 of
	Drawn JCH	Scale 1/4" = 1'-0"	Date 20110930	




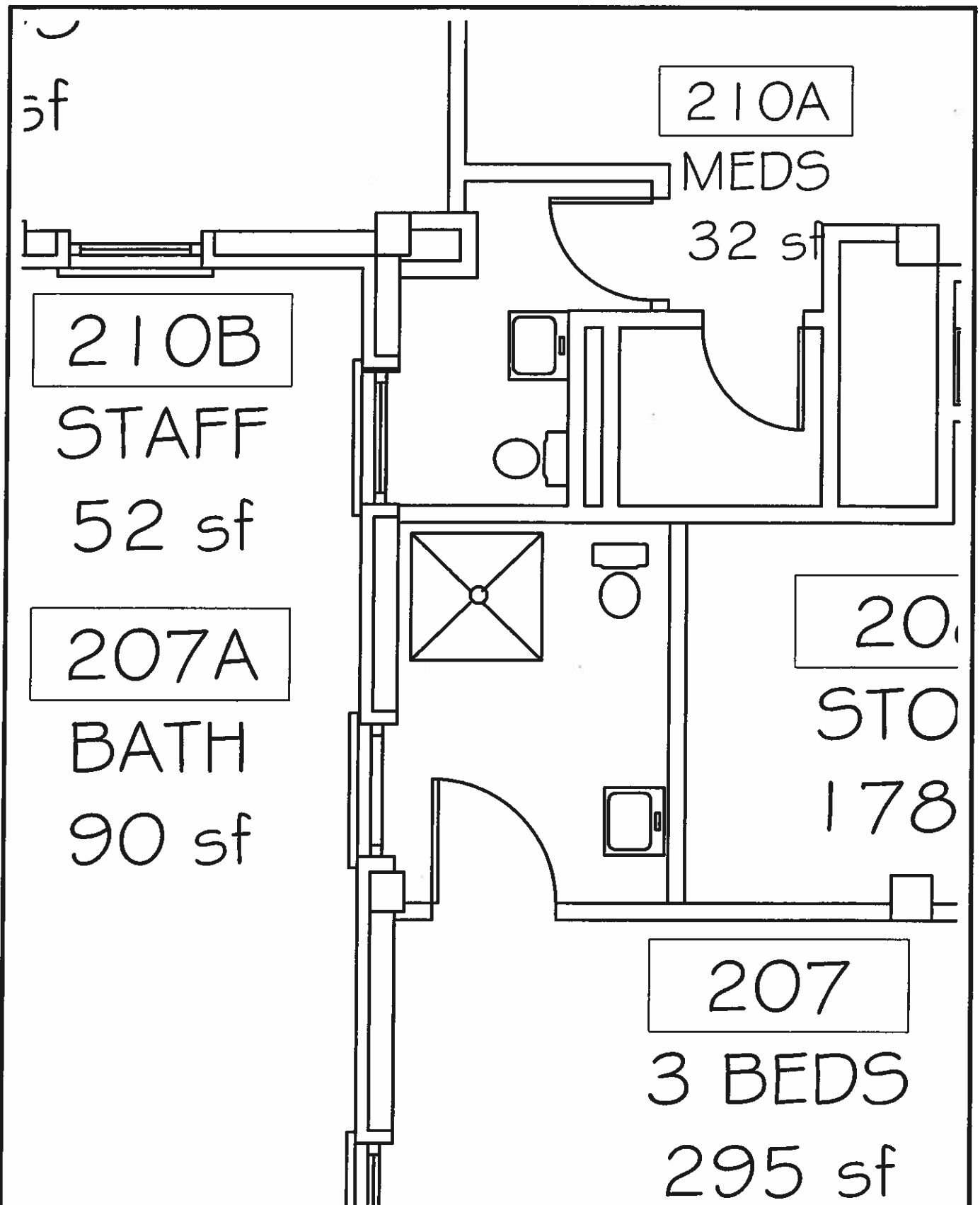
Drawing Title FLOOR PLAN	Project Title Renovate Patient Bathrooms		Project Number 564-12-106		Engineering Service  Department of Veterans Affairs
			Building Number One (1)		
Approved Project Engineer	Location VA Health Care System of the Ozarks		Drawing Number AP200		
			Sheet 1 of		
Drawn JCH		Scale 1/4" = 1'-0"	Date 20110930		


206A
BATH
107 sf

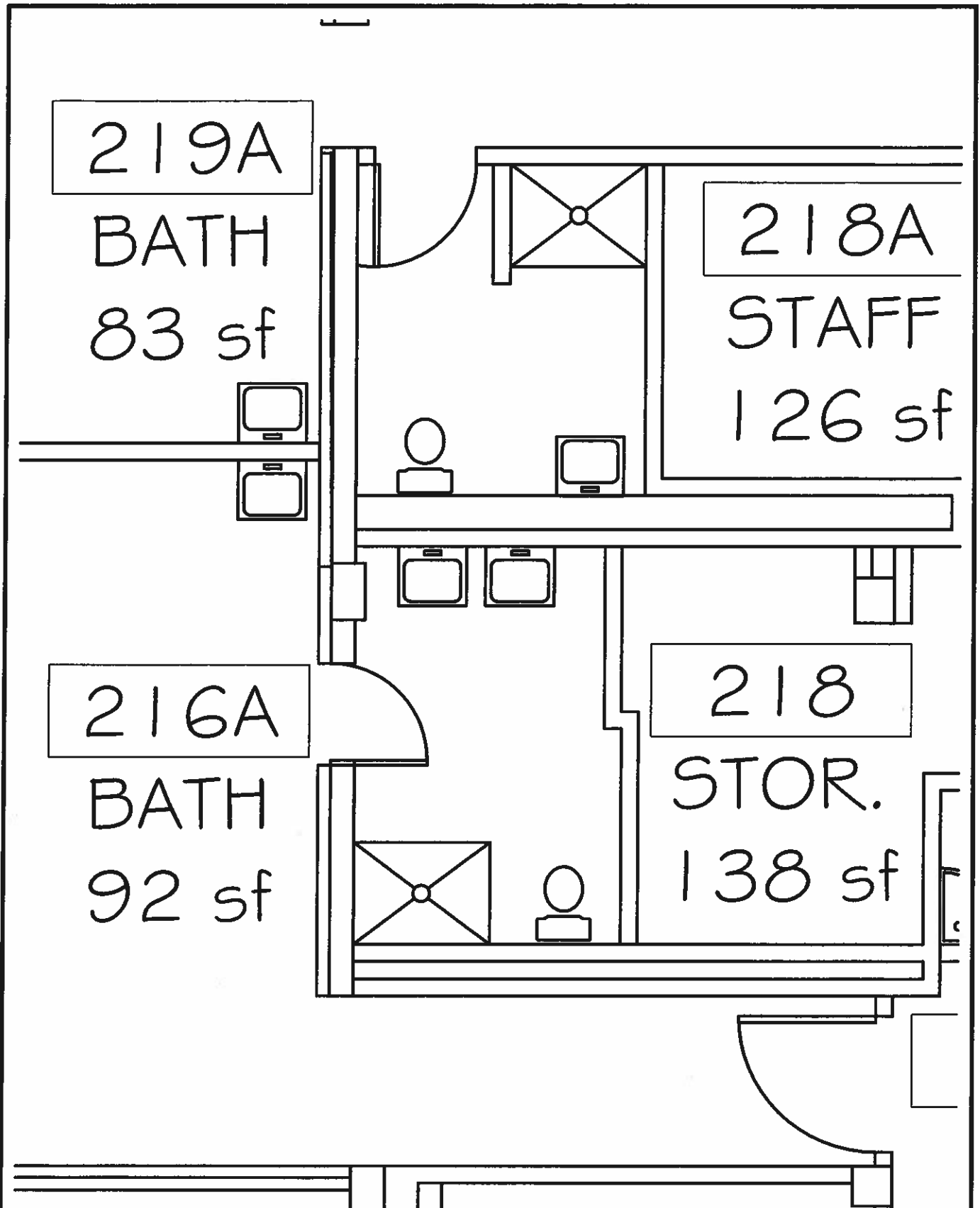
207
3 BEDS
295 sf




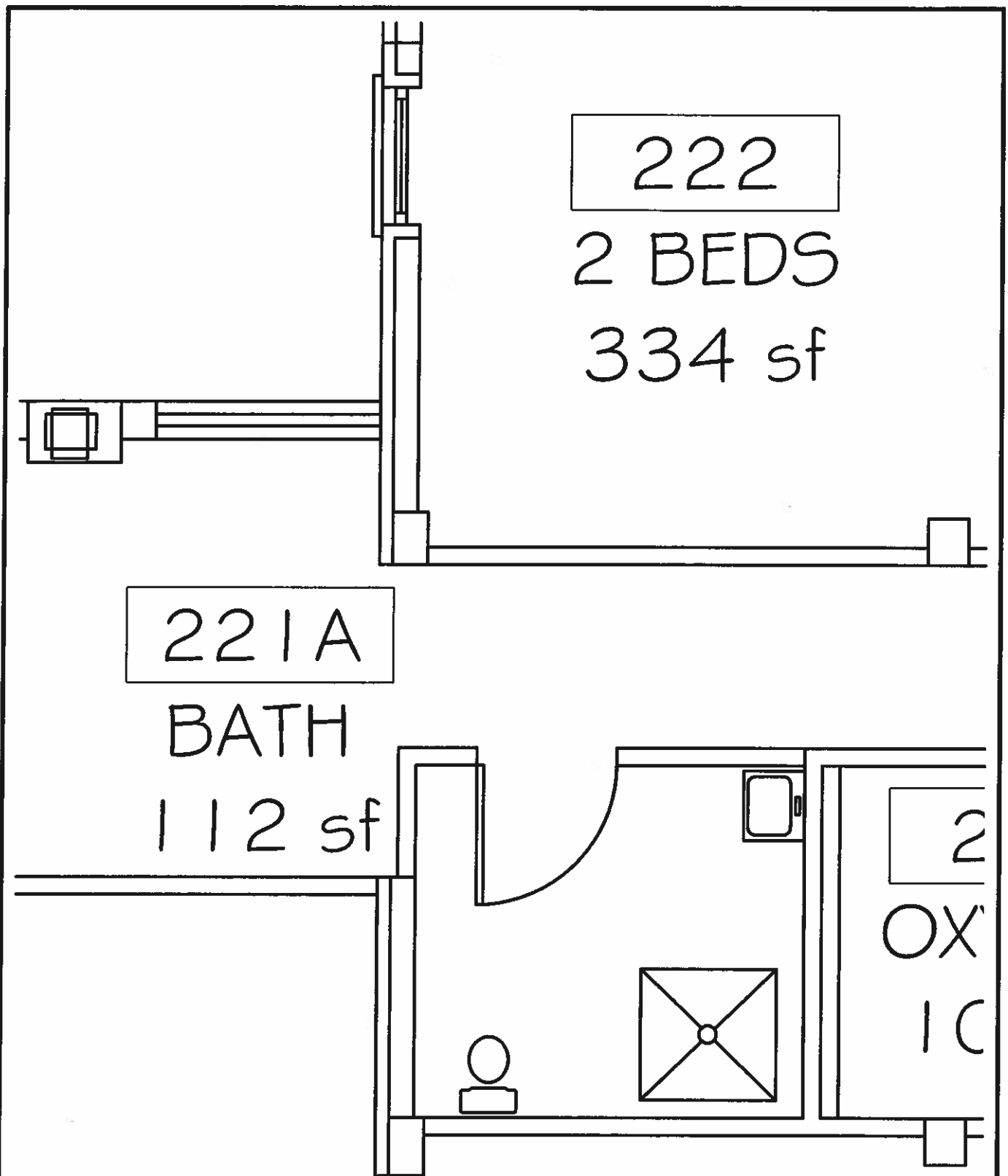
Drawing Title FLOOR PLAN	Project Title Renovate Patient Bathrooms		Project Number 564-12-106		Engineering Service  Department of Veterans Affairs
			Building Number One (1)		
Approved Project Engineer	Location VA Health Care System of the Ozarks		Drawing Number AP200		
			Sheet 1 of		
Drawn JCH	Scale 1/4" = 1'-0"	Date 20110930			




Drawing Title FLOOR PLAN	Project Title Renovate Patient Bathrooms		Project Number 564- 12 - 106	Engineering Service  Department of Veterans Affairs
			Building Number One (1)	
Approved Project Engineer	Location VA Health Care System of the Ozarks		Drawing Number AP200	Sheet 1 of
	Drawn JCH	Scale 1/4" = 1'-0"	Date 20110930	



Drawing Title FLOOR PLAN	Project Title Renovate Patient Bathrooms		Project Number 564- 12 - 106		Engineering Service  Department of Veterans Affairs
			Building Number One (1)		
Approved Project Engineer	Location VA Health Care System of the Ozarks		Drawing Number AP200		Sheet 1 of
			Date 20110930		
Drawn JCH		Scale 1/4" = 1'-0"			



Drawing Title FLOOR PLAN	Project Title Renovate Patient Bathrooms		Project Number 564- 12 - 106		Engineering Service  Department of Veterans Affairs
			Building Number One (1)		
Approved Project Engineer	Location VA Health Care System of the Ozarks		Drawing Number AP200		Sheet 1 of
			Date 20110930		
	Drawn JCH	Scale 1/4" = 1'-0"			

MECHANICAL

627 sf

222A

BATH

64 sf

222


2 BEDS

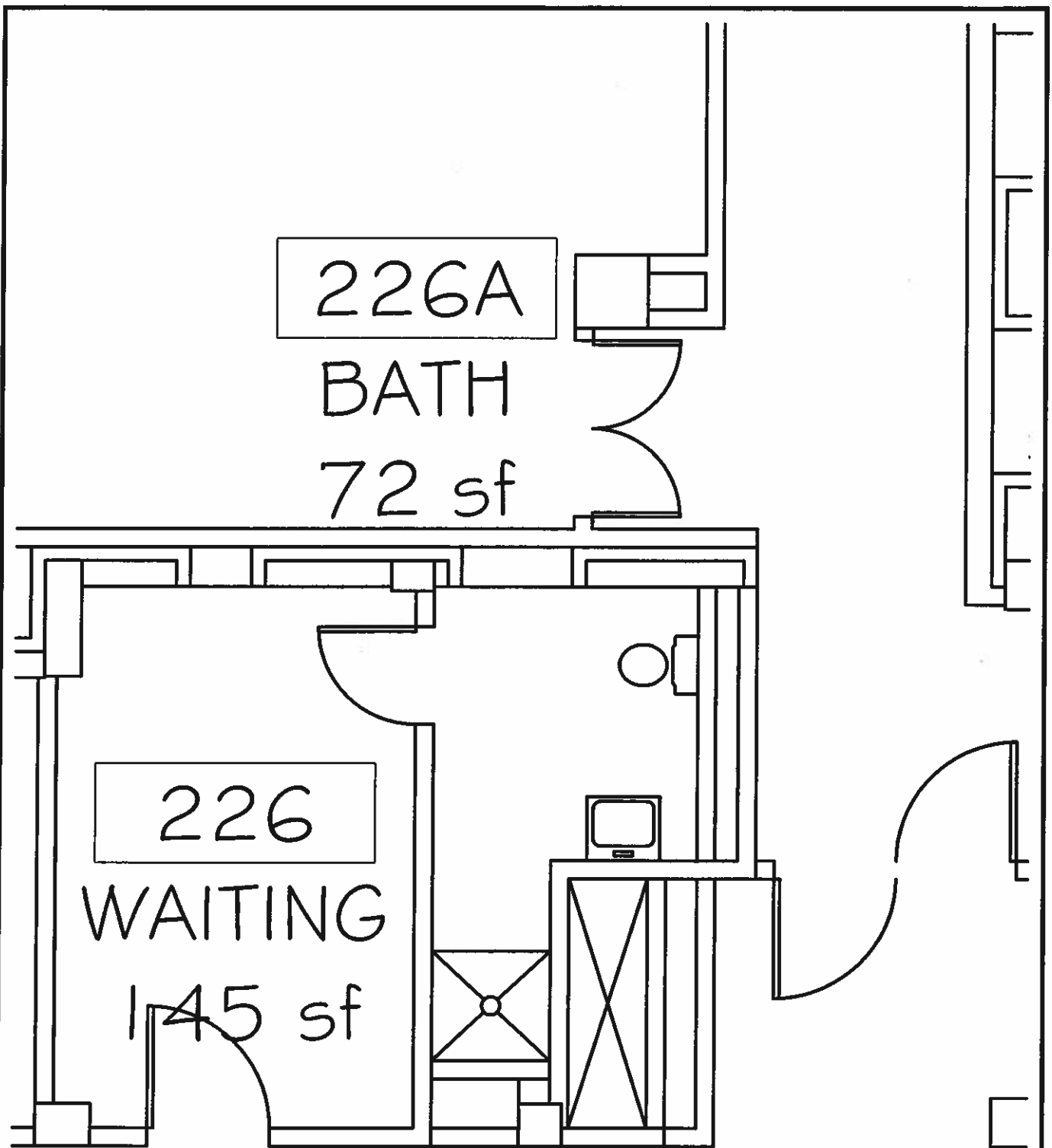
334 sf

223


COOF

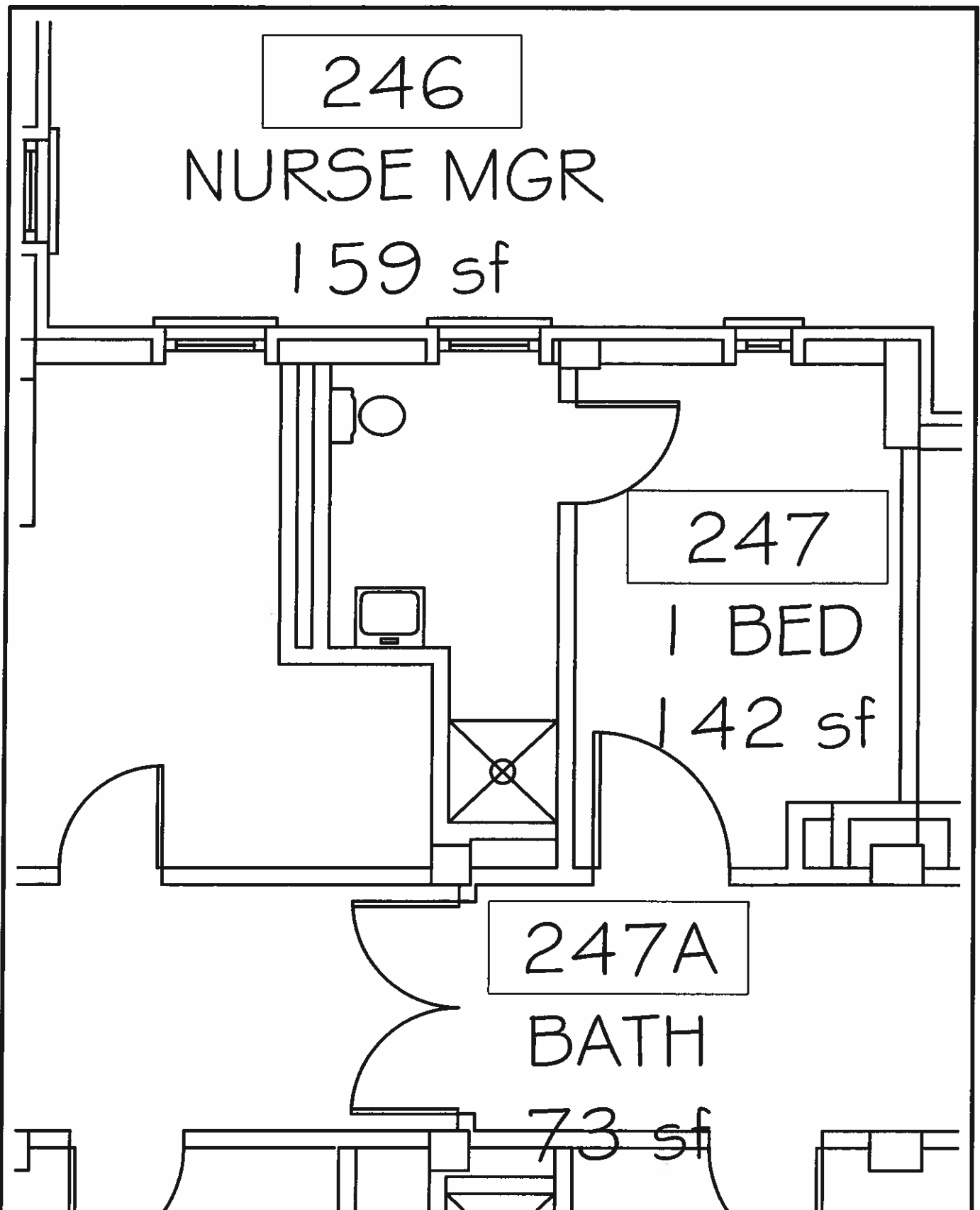
789


Drawing Title FLOOR PLAN	Project Title Renovate Patient Bathrooms	Project Number 564-12-106	Engineering Service  Department of Veterans Affairs
Approved Project Engineer	Location VA Health Care System of the Ozarks	Building Number One (1)	
	Drawn JCH	Scale 1/4" = 1'-0"	Drawing Number AP200
		Date 20110930	Sheet 1 of

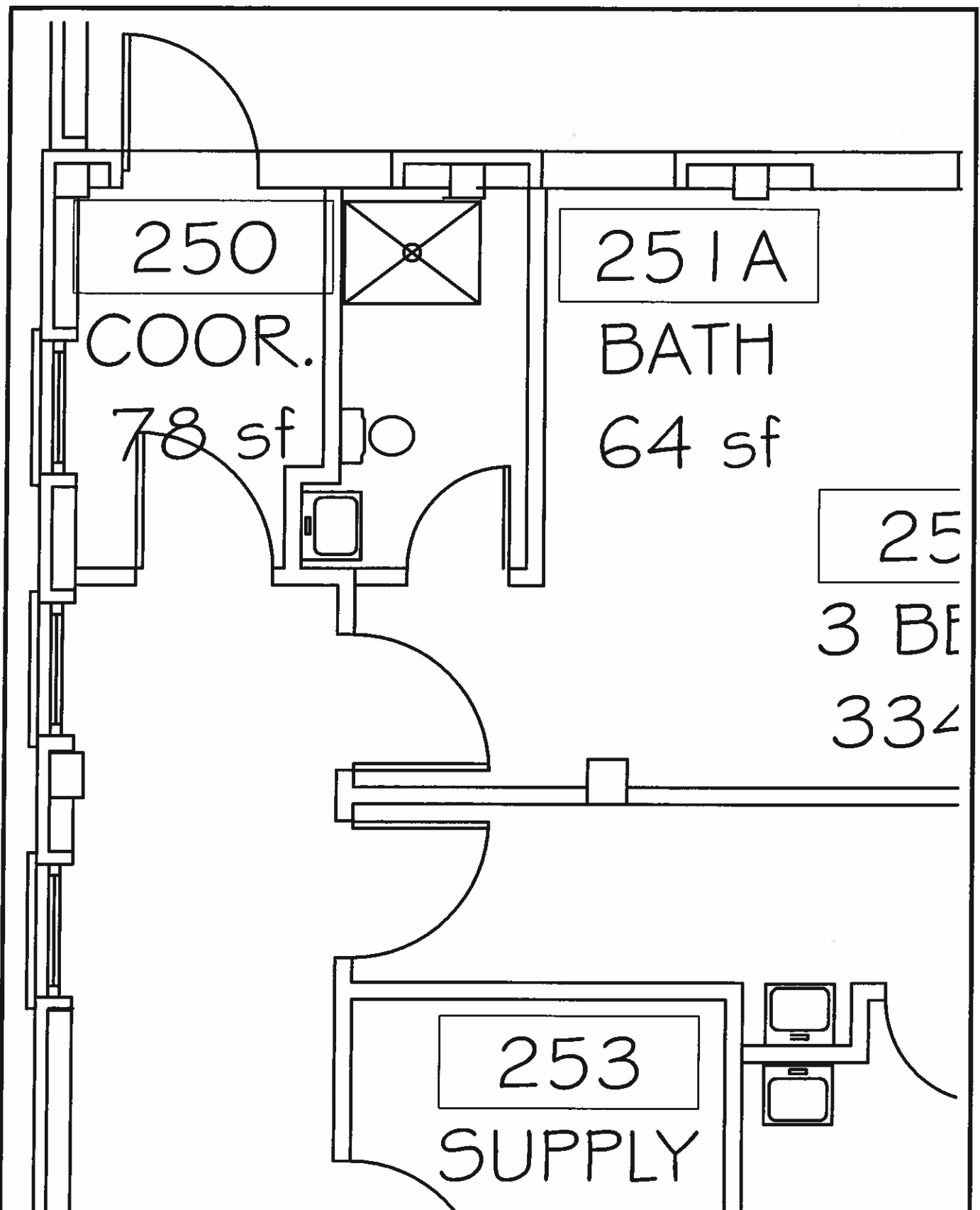



PRIMARY CIRCULATION CORRIDOR

Drawing Title FLOOR PLAN	Project Title Renovate Patient Bathrooms		Project Number 564- 12 - 106		Engineering Service  Department of Veterans Affairs
			Building Number One (1)		
Approved Project Engineer	Location VA Health Care System of the Ozarks		Drawing Number AP200		Sheet 1 of
			Date 20110930		
	Drawn JCH	Scale 1/4" = 1'-0"			



Drawing Title FLOOR PLAN	Project Title Renovate Patient Bathrooms		Project Number 564- 12 - 106	Engineering Service  Department of Veterans Affairs
Approved Project Engineer	Location VA Health Care System of the Ozarks		Building Number One (1)	
CUSTOM VA FORM 08-6231B, MAR 2006	Drawn JCH	Scale 1/4" = 1'-0"	Date 20110930	Drawing Number AP200 Sheet 1 of



Drawing Title FLOOR PLAN	Project Title Renovate Patient Bathrooms		Project Number 564- 12 - 106		Engineering Service  Department of Veterans Affairs
			Building Number One (1)		
Approved Project Engineer	Location VA Health Care System of the Ozarks		Drawing Number AP200		Sheet 1 of
			Date 20110930		
	Drawn JCH	Scale 1/4" = 1'-0"			

TH
sf

251

3 BEDS

334 sf

252

2 BEDS

242 sf


252A

BATH

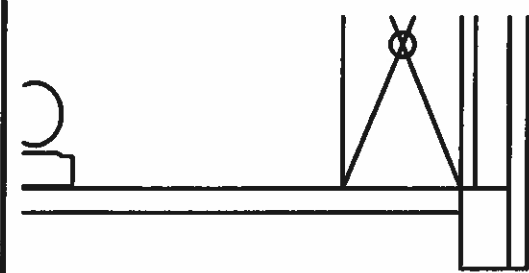
92 sf

25

4 BE

Drawing Title FLOOR PLAN	Project Title Renovate Patient Bathrooms	Project Number 564- 12 - 106	Engineering Service  Department of Veterans Affairs
		Building Number One (1)	
Approved Project Engineer	Location VA Health Care System of the Ozarks	Drawing Number AP200	
	Drawn JCH	Scale 1/4" = 1'-0"	
Date 20110930			

CUSTOM VA FORM 08-62318, MAR 2006

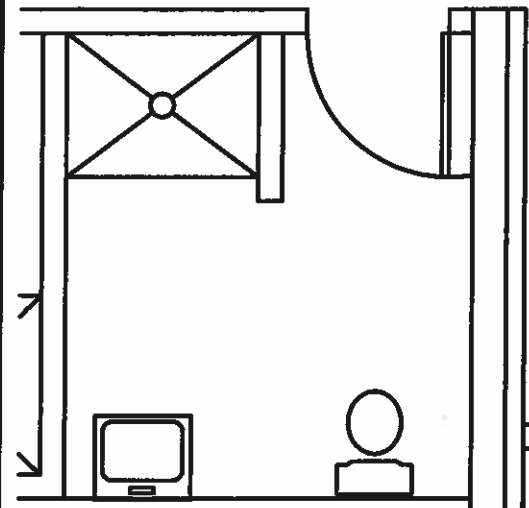


BATH

92 sf

254

4 BEDS

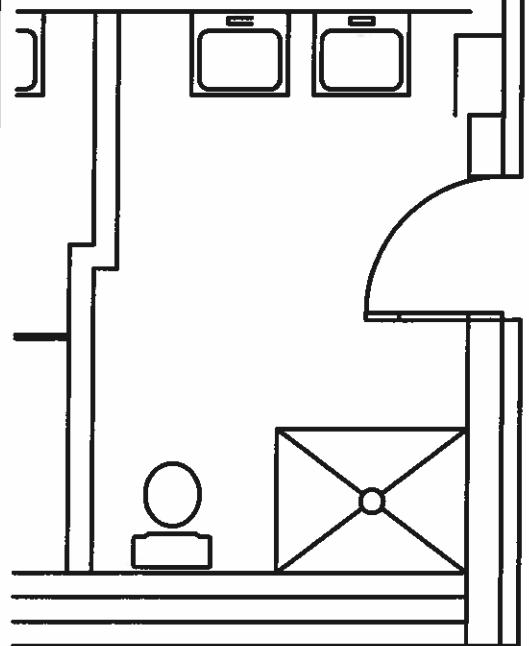


254A

BATH

83 sf

385 sf




257A

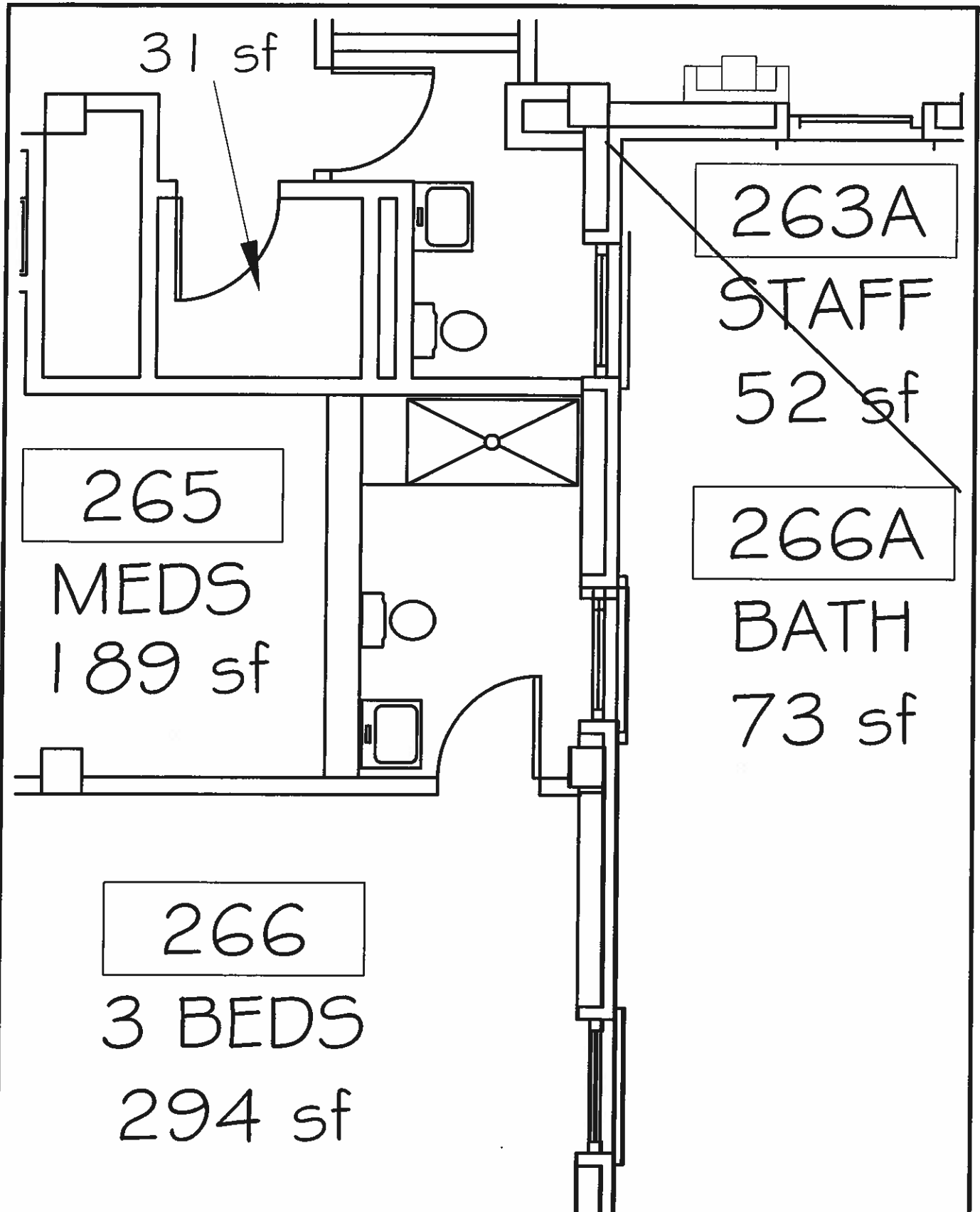
BATH


92 sf

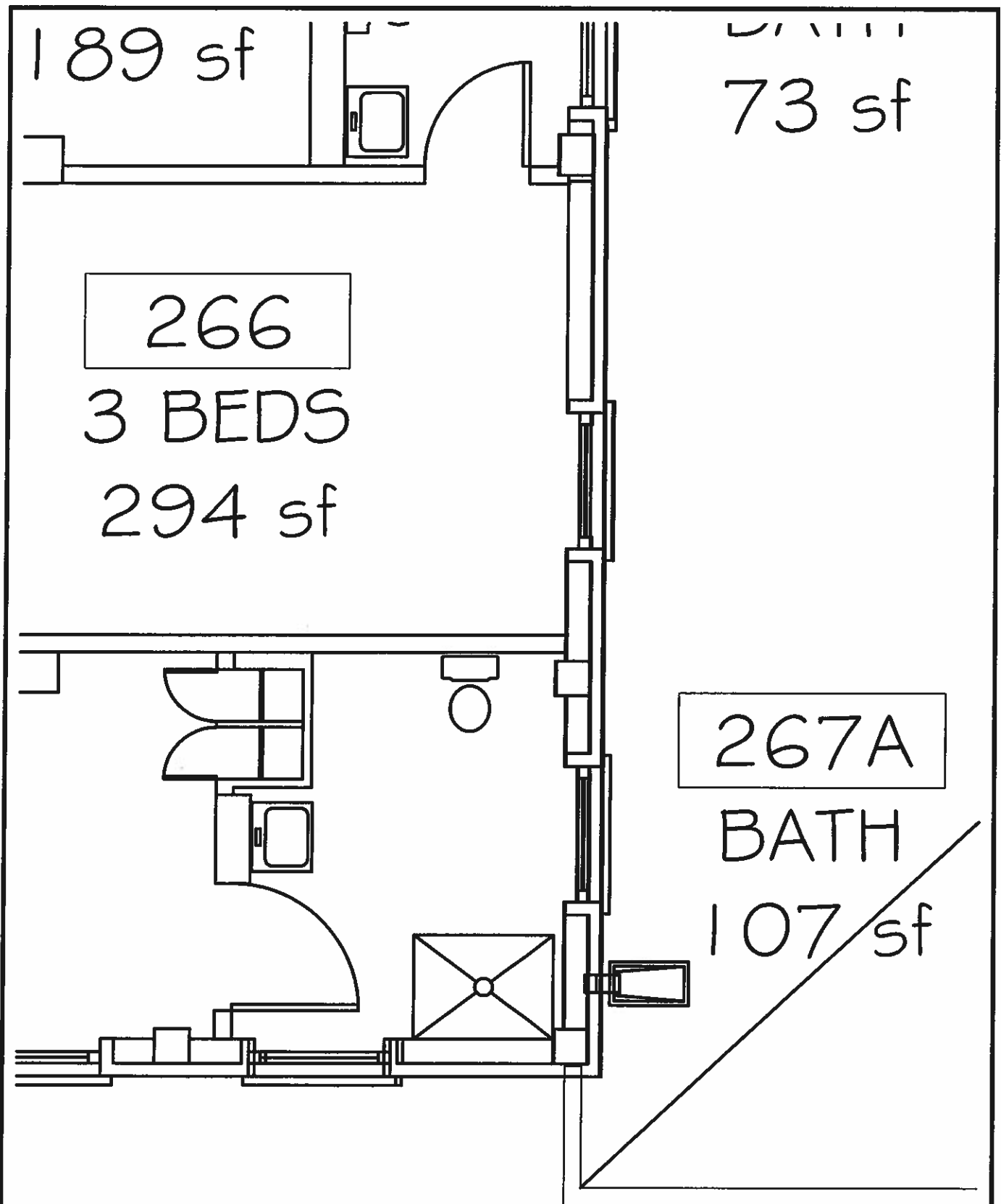
257


4 BEDS

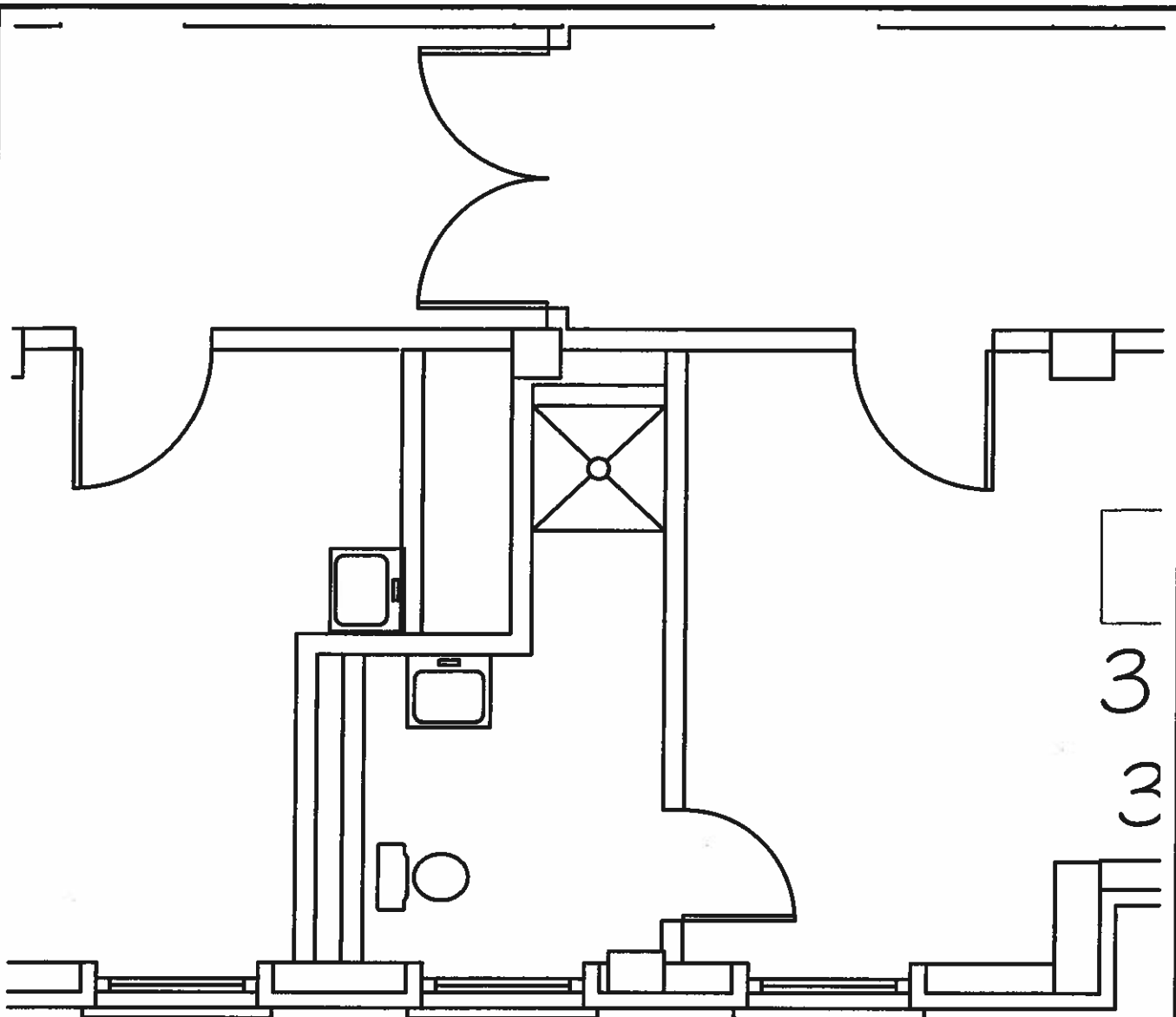
Drawing Title FLOOR PLAN	Project Title Renovate Patient Bathrooms	Project Number 564- 12 - 106	Engineering Service  Department of Veterans Affairs
		Building Number One (1)	
Approved Project Engineer	Location VA Health Care System of the Ozarks	Drawing Number AP200	Sheet 1 of
	Drawn JCH	Scale 1/4" = 1'-0"	



Drawing Title FLOOR PLAN	Project Title Renovate Patient Bathrooms		Project Number 564- 12 - 106	Engineering Service  Department of Veterans Affairs
Approved Project Engineer	Location VA Health Care System of the Ozarks		Building Number One (1)	
	Drawn JCH	Scale 1/4" = 1'-0"	Date 20110930	Drawing Number AP200
CUSTOM VA FORM 08-6231B, MAR 2006			Sheet 1 of	



Drawing Title FLOOR PLAN	Project Title Renovate Patient Bathrooms		Project Number 564- 12 - 106		Engineering Service  Department of Veterans Affairs
			Building Number One (1)		
Approved Project Engineer	Location VA Health Care System of the Ozarks		Drawing Number AP200		Sheet 1 of
	Drawn JCH	Scale 1/4" = 1'-0"	Date 20110930		



271


CONF

139 sf

270A

BATH

73 sf

Drawing Title FLOOR PLAN	Project Title Renovate Patient Bathrooms		Project Number 564- 12 - 106	Engineering Service  Department of Veterans Affairs
			Building Number One (1)	
Approved Project Engineer	Location VA Health Care System of the Ozarks		Drawing Number AP200	
			Sheet 1 of	
Drawn JCH		Scale 1/4" = 1'-0"	Date 20110930	