

A

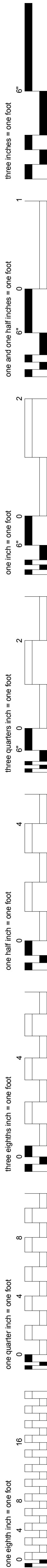
B

C

D

E

F



SHEET NO.	SHEET NAME	SD	DD	CD	A1
16 - T - TELECOMMUNICATION					
ET001	TITLE PAGE, SYMBOLS & NOTES		•	•	•
ET101	FLOOR PLAN - LEVEL 3 - AREA D DEMO		•	•	•
ET200	FLOOR PLAN - LEVEL 3 - SITE TELECOMMUNICATIONS				•
ET201	FLOOR PLAN - LEVEL 3 - AREA D TELECOMMUNICATIONS		•	•	•
ET301	ROBOTIC OR FLOOR PLAN & RCP		•	•	•
ET302	ROBOTIC OR - RCP				•
ET401	DETAILS		•	•	•
17 - V - VENDOR (FOR REFERENCE ONLY)					
TITLE	STRYKER COVERSHEET				•
R-OR8	STRYKER EQUIPMENT LAYOUT - OR#8				•
P1	STRYKER PRE- INSTALL NOTES				•
P2	STRYKER PRE- INSTALL NOTES				•

SHEET NO.	SHEET NAME	SD	DD	CD	A1
01 - G - GENERAL					
GI000	COVER SHEET		•	•	•
GI001	SHEET INDEX		•	•	•
GI002	PROJECT INFORMATION AND CODE ANALYSIS		•	•	•
GI003	STANDARD ABBREVIATIONS		•	•	•
GI004	ACCESSIBILITY NOTES AND DIAGRAMS		•	•	•
GI005	ACCESSIBILITY DIAGRAMS		•	•	•
GI006	TYPICAL TOILET ACCESSORY MOUNTING HEIGHTS		•	•	•
GI007	TYPICAL DEVICE MOUNTING HEIGHTS		•	•	•
GI008	PHASING PLAN		•	•	•
GI008A	PHASING PLAN		•	•	•
GI009	LIFE SAFETY PLAN - LEVEL 3 - AREA D		•	•	•
GI010	INTERIOR RENDERING PERSPECTIVES		•	•	•
07 - S - STRUCTURAL					
SE001	GENERAL NOTES		•	•	•
SE101	FLOOR PLAN - LEVEL 3 - AREA D		•	•	•
SE102	INTERSTITIAL FLOOR PLAN - LEVEL 3 - AREA D			•	•
SE400	SECTIONS & DETAILS		•	•	•
SE500	EQUIPMENT ANCHORAGE SCHEDULES & DETAILS		•	•	•
08 - A - ARCHITECTURAL					
AE001	ARCHITECTURAL SYMBOLS		•	•	•
AS101	ARCHITECTURAL SITE PLAN / ACCESSIBLE PATH OF TRAVEL		•	•	•
AD101	DEMOLITION FLOOR PLAN - LEVEL 3 - AREA D		•	•	•
AD102	DEMOLITION REFLECTED CEILING PLAN - LEVEL 3 - AREA D		•	•	•
AE101	FLOOR PLAN - LEVEL 3 - AREA D		•	•	•
AE102	REFLECTED CEILING PLAN - LEVEL 3 - AREA D		•	•	•
AE201	INTERIOR ELEVATIONS		•	•	•
AE202	INTERIOR ELEVATIONS		•	•	•
AE301	PARTIAL BUILDING SECTIONS (FOR REFERENCE ONLY)		•	•	•
AE501	PARTITION TYPES			•	•
AE502	PARTITION DETAILS			•	•
AE503	PARTITION DETAILS			•	•
AE504	PARTITION DETAILS AND MISC. DETAILS			•	•
AE601	DOOR, FRAME, WINDOW TYPES AND DOOR HARDWARE SCHEDULE			•	•
AE610	SIGNAGE AND MISC. DETAILS				•
AE910	ACOUSTICAL CEILING DETAILS			•	•
AE911	GYPSON BOARD CEILING DETAILS			•	•
09 - I - INTERIORS					
AI101	FLOOR FINISH PLAN - LEVEL 3 - AREA D		•	•	•
AI102	WALL FINISH PLAN		•	•	•
AJ301	MATERIAL FINISH SCHEDULE		•	•	•
IG101	SIGNAGE PLAN				•
IG201	INTERIOR SIGNAGE DETAILS				•
10 - Q - EQUIPMENT					
QH101	FURNITURE, FURNISHING, AND EQUIPMENT PLAN - LEVEL 3 - AREA D		•	•	•
QH201	EQUIPMENT SCHEDULE			•	•
11 - F - FIRE PROTECTION					
FA001	FIRE ALARM SYSTEM LEGEND AND GENERAL NOTES		•	•	•
FAD101	FIRE ALARM SYSTEM DEMOLITION PLAN		•	•	•
FA101	FIRE ALARM SYSTEM PLAN		•	•	•
FA102	FIRE ALARM SYSTEM PARTIAL 3RD FLOOR PLAN		•	•	•
FA201	FIRE ALARM SYSTEM RISER DIAGRAM & SCHEDULES				•
FA301	SEQUENCE OF OPERATIONS				•
FX001	FIRE SUPPRESSION LEGEND AND NOTES			•	•
FD101	FIRE SUPPRESSION DEMO FLOOR PLAN - LEVEL 3 - AREA D				•
FX101	FIRE SUPPRESSION - LEVEL 3 - AREA D			•	•
FX102	FIRE SUPPRESSION INTERSTITIAL PLAN - LEVEL 3				•
12 - P - PLUMBING					
PL001	PLUMBING LEGENDS AND NOTES		•	•	•
PL002	PLUMBING EQUIPMENT AND FIXTURE SCHEDULES		•	•	•
PD101	PLUMBING DEMOLITION PLAN - LEVEL 3 - AREA D		•	•	•
PD102	PLUMBING DEMOLITION INTERSTITIAL PLAN - LEVEL 2P - AREA D - (SOIL & WASTE)		•	•	•
PD103	PLUMBING INTERSTITIAL DEMOLITION PLAN - LEVEL 3 - AREA D		•	•	•
PL101	PLUMBING FLOOR PLAN - LEVEL 3 - AREA D		•	•	•
PL102	PLUMBING INTERSTITIAL PLAN - LEVEL 2P - AREA D (SOIL & WASTE)		•	•	•
PL103	PLUMBING INTERSTITIAL PLAN - LEVEL 3 - AREA D		•	•	•
14 - M - MECHANICAL					
MH001	MECHANICAL LEGENDS AND NOTES		•	•	•
MH002	MECHANICAL SCHEDULES			•	•
MD101	MECHANICAL DEMOLITION PLAN - LEVEL 3 - AREA D			•	•
MD102	MECHANICAL INTERSTITIAL DEMOLITION PLAN - LEVEL 3 - AREA D		•	•	•
MH101	MECHANICAL FLOOR PLAN - LEVEL 3 - AREA D		•	•	•
MH102A	MECHANICAL INTERSTITIAL PLAN - LEVEL 3 - AREA D			•	•
MH102B	MECHANICAL INTERSTITIAL PLAN - LEVEL 3 - AREA D				•
MH401	MECHANICAL DETAILS				•
MI501	MECHANICAL CONTROL LEGEND, NOTES AND DIAGRAMS			•	•
15 - E - ELECTRICAL					
E001	ELECTRICAL LEGEND AND GENERAL NOTES		•	•	•
ED101	LIGHTING DEMOLITION PLAN		•	•	•
ED102	POWER DEMOLITION PLAN		•	•	•
EL101	LIGHTING PLAN		•	•	•
EP101	POWER PLAN		•	•	•
E101	PARTIAL 3RD FLOOR ELECTRICAL PLAN		•	•	•
E102	PARTIAL 3RD FLOOR INTERSTITIAL ELECTRICAL PLAN			•	•
E201	PARTIAL SINGLE LINE DIAGRAMS AND LOAD SCHEDULES		•	•	•
E301	PANEL AND LUMINARE SCHEDULE			•	•
E401	SCHEDULES AND DIAGRAMS				•

A

B

C

D

E

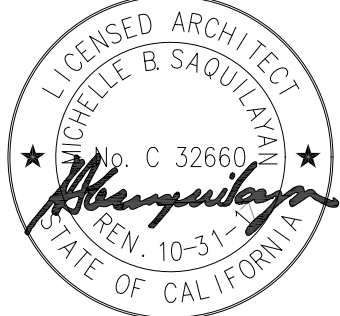
F

No.	Description	Date
1	SCHEMATIC DESIGN (SD)	10/20/2015
2	DESIGN DEVELOPMENT (DD)	01/18/2016
3	CONSTRUCTION DOCUMENTS (CD)	03/30/2016
4	ADDENDUM 1	8/17/2016

CONSULTANTS:

(SEE PROJECT TEAM DIRECTORY ON GI000 COVER SHEET)

Seals and Signatures



ARCHITECTS/ENGINEERS:

**LEO A DAILY**  
550 South Hope Street, 27<sup>th</sup> Floor  
Los Angeles, California 90071, USA  
213-629-0100 F213-629-0070

PLANNING  
ARCHITECTURE  
ENGINEERING  
INTERIORS  
EST. 1915

Drawing Title  
**SHEET INDEX**

Approved: Project Director

Project Title  
**CONSTRUCT OPERATING  
ROOM #8**

Location  
11201 BENTON STREET  
LOMA LINDA, CA 92357

Date  
03/30/2016

Checked  
MS

Drawn  
TV

Project Number  
605-14-640

Building Number  
1

Drawing Number  
**GI001**

CONSTRUCTION DOCUMENTS  
FULLY SPRINKLERED

Office of  
Construction  
and Facilities  
Management



A

B

C

D

E

F

three inches = one foot

one and one half inches = one foot

one inch = one foot

three quarters inch = one foot

one half inch = one foot

three eighths inch = one foot

one quarter inch = one foot

one eighth inch = one foot

8/17/2016 11:05:04 AM 201414252 - VA Loma Linda OR Construction SS-14252-R16.vrt

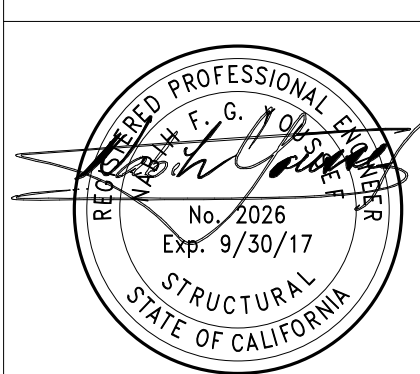
No.	Description	Date
1	SCHEMATIC DESIGN (SD)	10/20/2015
2	DESIGN DEVELOPMENT (DD)	01/19/2016
3	CONSTRUCTION DOCUMENTS (CD)	03/30/2016
4	ADDENDUM 1	08/17/2016

CONSULTANTS:



**NABIH YOUSSEF**  
STRUCTURAL ENGINEERS  
550 S. HOPE ST. SUITE 1700  
LOS ANGELES, CALIF. 90071  
T: 213.362.0707 • F: 213.688.3099  
LOS ANGELES • IRVINE • SAN FRANCISCO

Seals and Signatures



ARCHITECTS/ENGINEERS:

**LEO A DAILY**

550 South Hope Street, 27 Floor  
Los Angeles, California 90071, USA  
213-629-0100 F213-629-0070

PLANNING  
ARCHITECTURE  
ENGINEERING  
INTERIORS

EST. 1915

Drawing Title

**SECTIONS & DETAILS**

Approved: Project Director

Project Title

**CONSTRUCT OPERATING  
ROOM #8**

Location

11201 BENTON STREET,  
LOMA LINDA, CA 92357

Date

03/30/2016

Checked

AP

Drawn

MR

Project Number

605-14-640

Building Number

1

Drawing Number

**SE400**

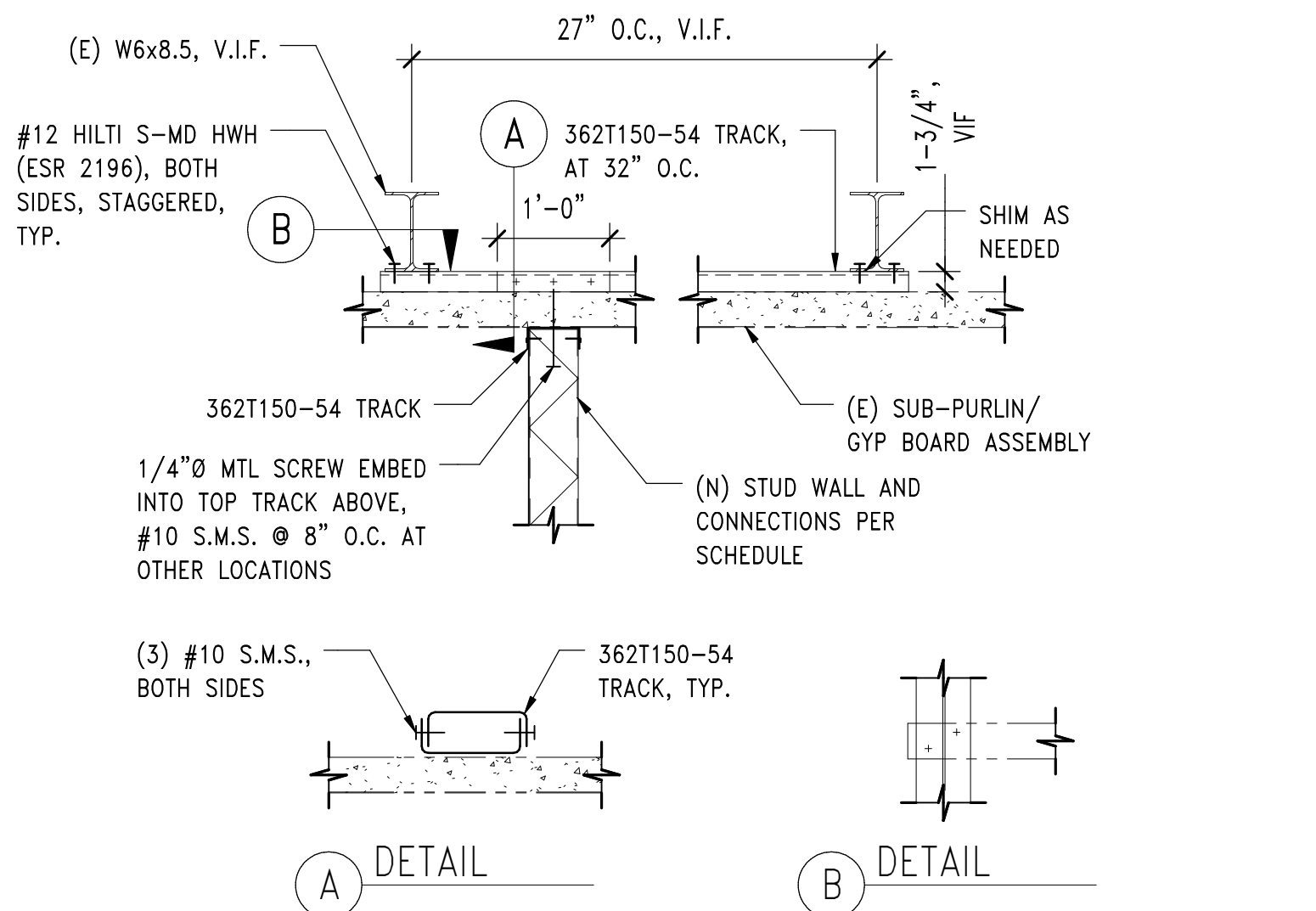
Office of  
Construction and Facilities  
Management



CONSTRUCTION DOCUMENTS  
FULLY SPRINKLERED

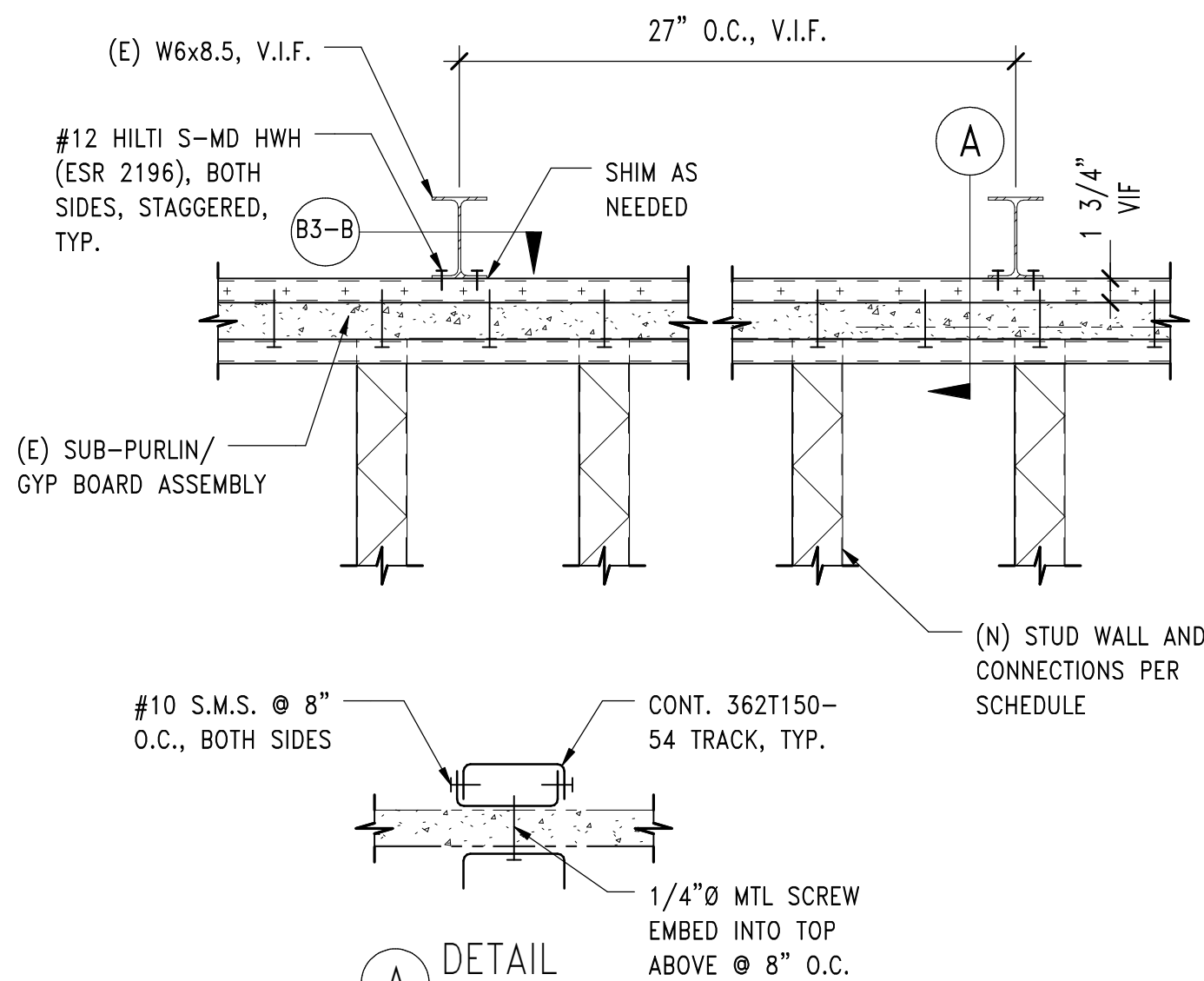
**C2 TOILET PARTITION SUPPORT**

SE400 1" = 1'-0"



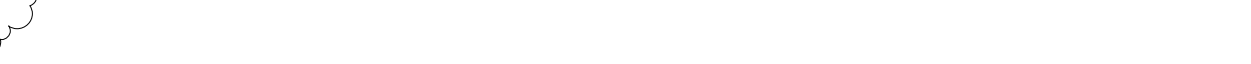
**D2 ALT. PARTITION WALL TOP CONNECTION PARALLEL TO (E) SUB-PURLINS**

SE400 1" = 1'-0"



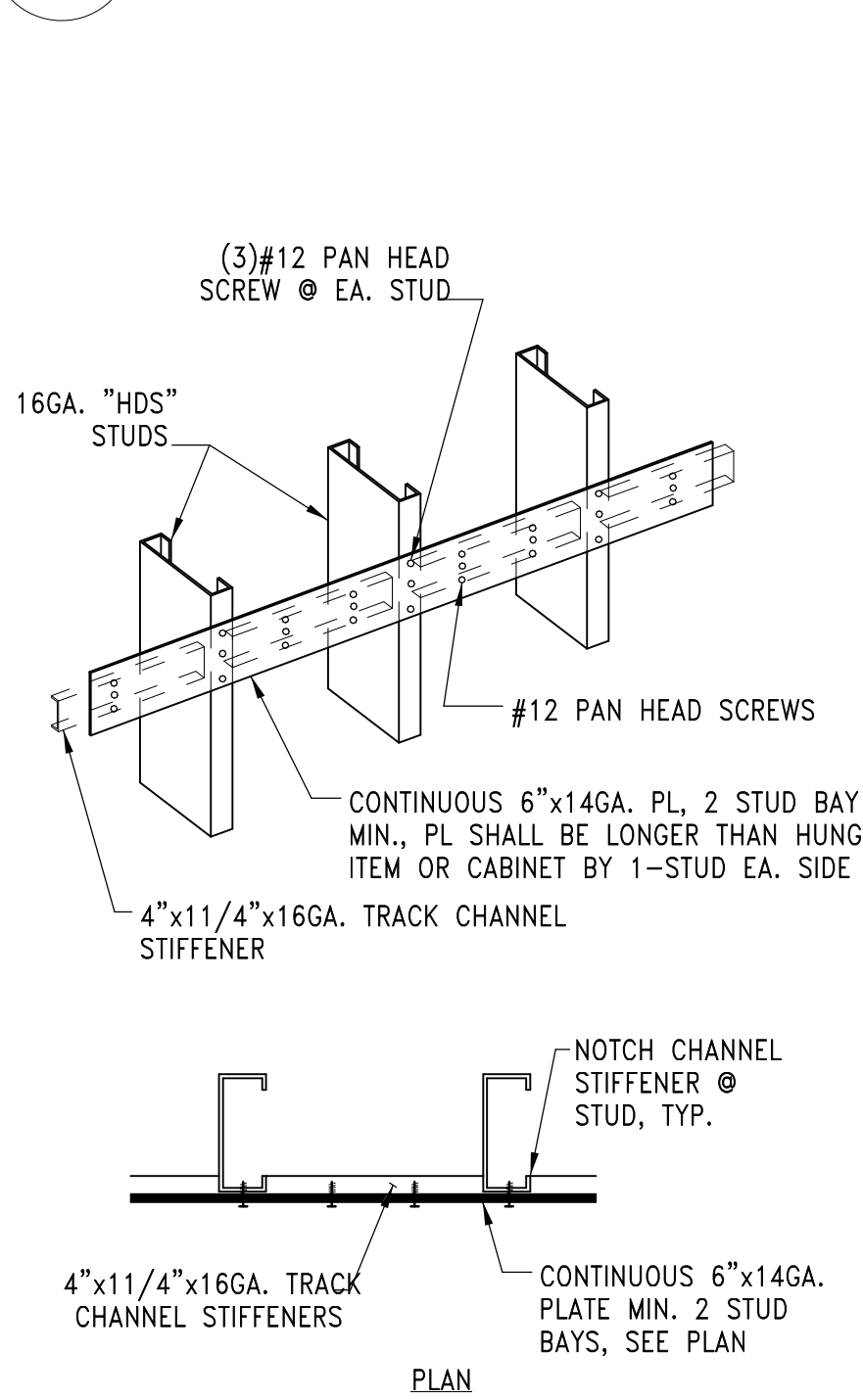
**F2 ALT. PARTITION WALL TOP CONNECTION PERPENDICULAR TO (E) SUB-PURLINS**

SE400 1" = 1'-0"



**A5 TYP. MTL STUD MOUNTING PLATE**

SE400 1" = 1'-0"



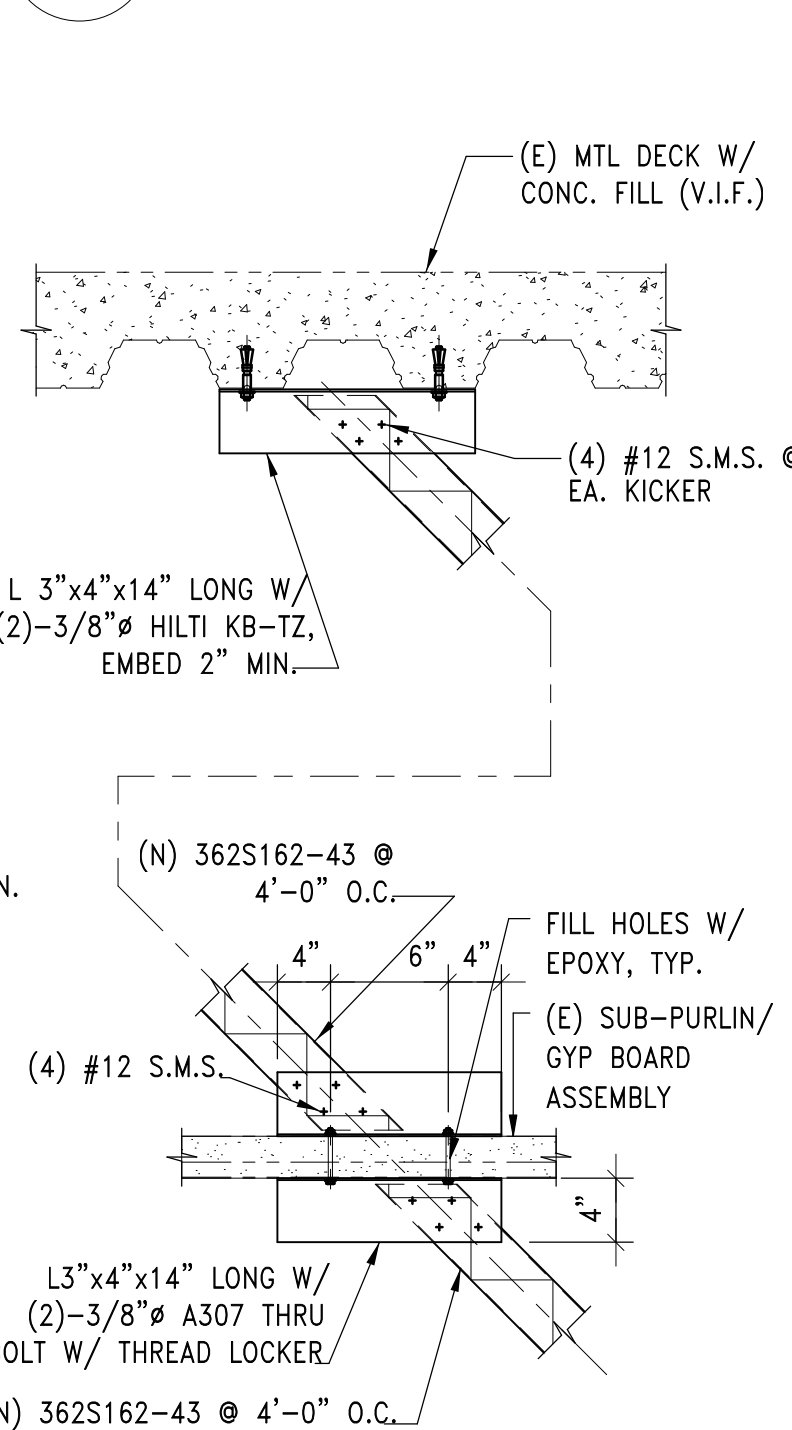
**D5 TP. BACKING CONNECTION**

SE400 1" = 1'-0"



**A6 TYP. STUD TO (E) DECK CONN.**

SE400 1" = 1'-0"



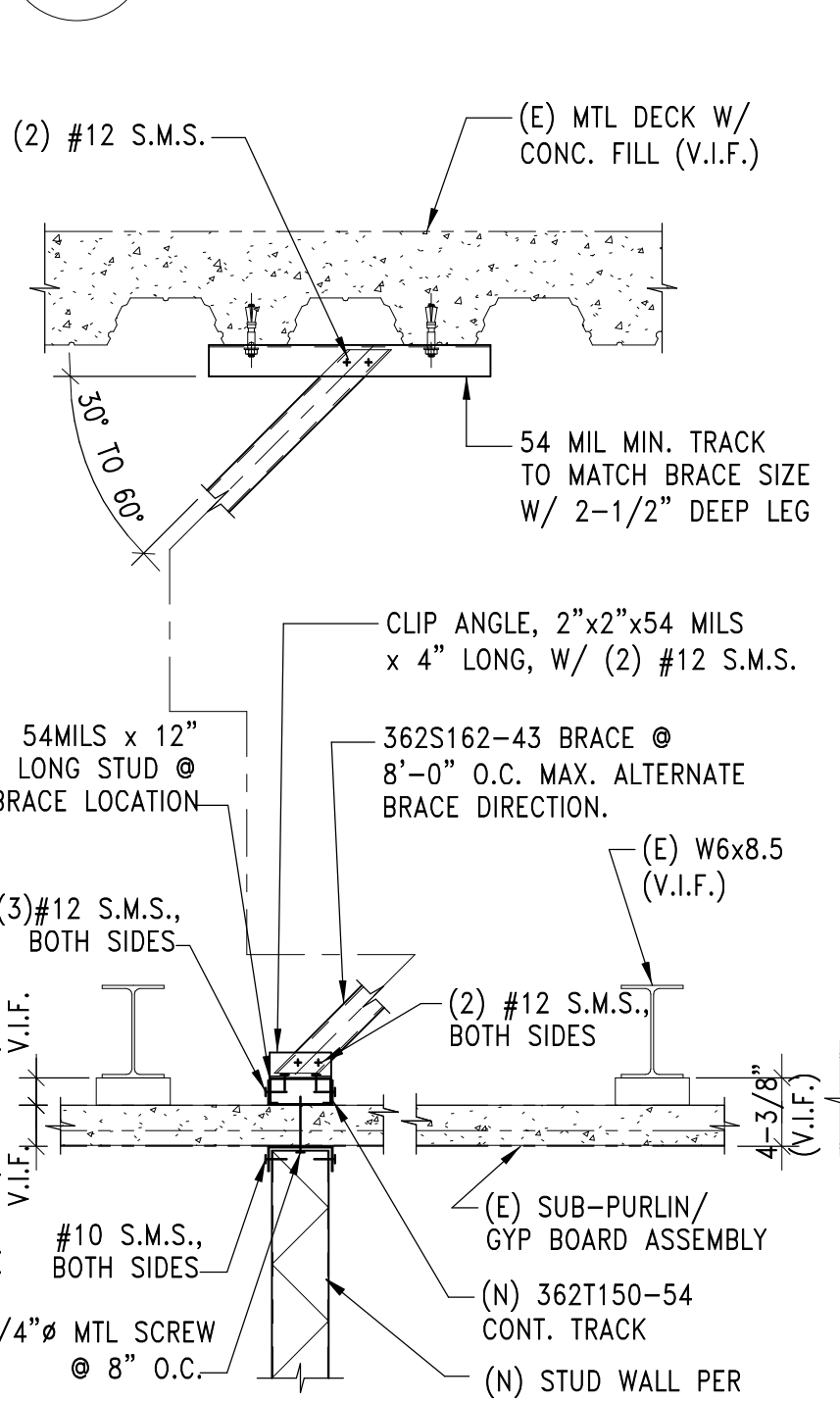
**D6 TYP. CEILING BRACING WIRE DTL**

SE400 1" = 1'-0"



**A7 SUSP. CEILING WIRING CONN.**

SE400 1" = 1'-0"



**D7 SUSPENDED STUD WALL**

SE400 1" = 1'-0"



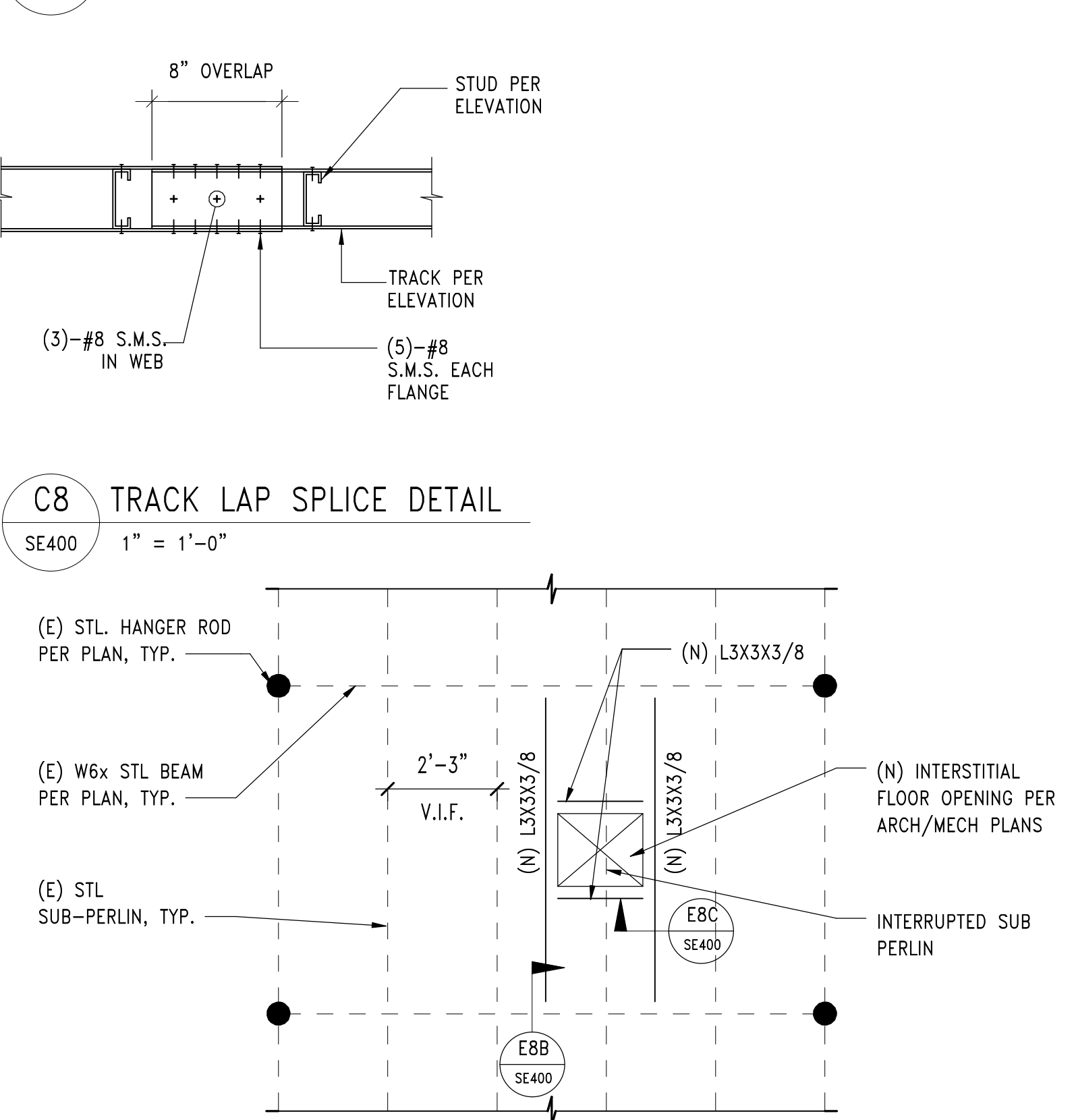
**E7 COMP. STRUT CONN.**

SE400 1" = 1'-0"



**B8 TYPICAL PENETRATION DETAIL**

SE400 1" = 1'-0"

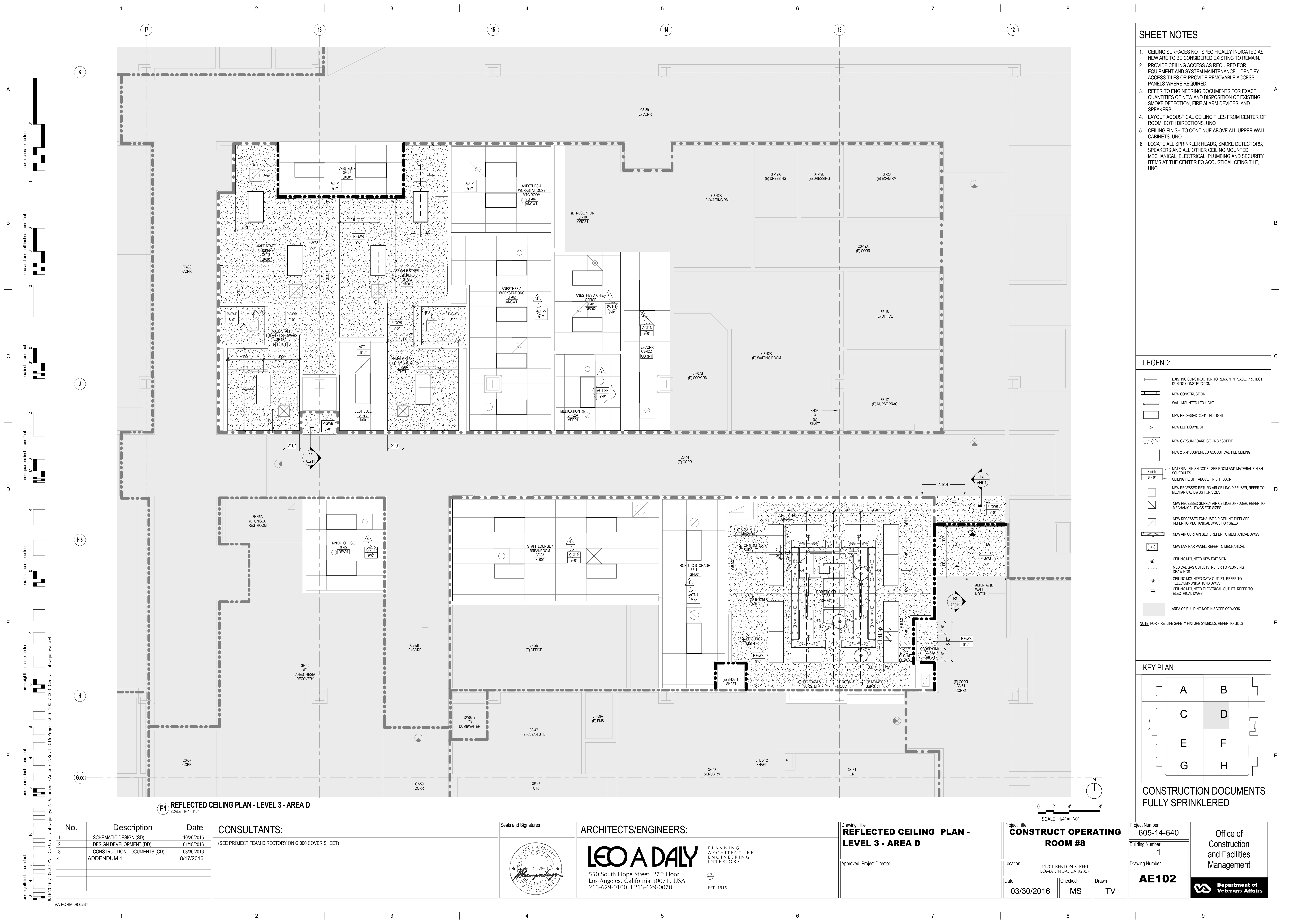


**E8 INTERRUPTED INTERSTITIAL FLOOR OPENING DETAIL**

SE400 N.T.S.







SHEET NOTES

1. CEILING SURFACES NOT SPECIFICALLY INDICATED AS NEW ARE TO BE CONSIDERED EXISTING TO REMAIN.
2. PROVIDE CEILING ACCESS AS REQUIRED FOR EQUIPMENT AND SYSTEM MAINTENANCE. IDENTIFY ACCESS TILES OR PROVIDE REMOVABLE ACCESS PANELS WHERE REQUIRED.
3. REFER TO ENGINEERING DOCUMENTS FOR EXACT QUANTITIES OF NEW AND DISPOSITION OF EXISTING SMOKE DETECTION, FIRE ALARM DEVICES, AND SPEAKERS.
4. LAYOUT ACOUSTICAL CEILING TILES FROM CENTER OF ROOM, BOTH DIRECTIONS, UNO
5. CEILING FINISH TO CONTINUE ABOVE ALL UPPER WALL CABINETS, UNO
8. LOCATE ALL SPRINKLER HEADS, SMOKE DETECTORS, MECHANICAL, ELECTRICAL, PLUMBING AND SECURITY ITEMS AT THE CENTER FO ACOUSTICAL CEING TILE, UNO

LEGEND:

- EXISTING CONSTRUCTION TO REMAIN IN PLACE, PROTECT DURING CONSTRUCTION.
- NEW CONSTRUCTION.
- WALL MOUNTED LED LIGHT
- NEW RECESSED 2'x4" LED LIGHT
- NEW LED DOWNLIGHT
- NEW GYPSUM BOARD CEILING / SOFFIT
- NEW 2' X 4' SUSPENDED ACOUSTICAL TILE CEILING
- MATERIAL FINISH CODE - SEE ROOM AND MATERIAL FINISH SCHEDULES
- CEILING HEIGHT ABOVE FINISH FLOOR
- NEW RECESSED RETURN AIR CEILING DIFFUSER, REFER TO MECHANICAL DWGS FOR SIZES
- NEW RECESSED SUPPLY AIR CEILING DIFFUSER, REFER TO MECHANICAL DWGS FOR SIZES
- NEW RECESSED EXHAUST AIR CEILING DIFFUSER, REFER TO MECHANICAL DWGS FOR SIZES
- NEW AIR CURTAIN SLOT, REFER TO MECHANICAL DWGS
- NEW LAMINAR PANEL, REFER TO MECHANICAL
- CEILING MOUNTED NEW EXT SIGN
- MEDICAL GAS OUTLETS, REFER TO PLUMBING DRAWINGS
- CEILING MOUNTED DATA OUTLET, REFER TO TELECOMMUNICATIONS DWGS
- CEILING MOUNTED ELECTRICAL OUTLET, REFER TO ELECTRICAL DWGS
- AREA OF BUILDING NOT IN SCOPE OF WORK

NOTE: FOR FIRE, LIFE SAFETY FIXTURE SYMBOLS, REFER TO G1002

KEY PLAN

A	B
C	D
E	F
G	H

CONSTRUCTION DOCUMENTS  
FULLY SPRINKLERED

**F1 REFLECTED CEILING PLAN - LEVEL 3 - AREA D**  
SCALE: 1/4" = 1'-0"

No.	Description	Date
1	SCHEMATIC DESIGN (SD)	10/20/2015
2	DESIGN DEVELOPMENT (DD)	01/18/2016
3	CONSTRUCTION DOCUMENTS (CD)	03/30/2016
4	ADDENDUM 1	8/17/2016

**CONSULTANTS:**  
(SEE PROJECT TEAM DIRECTORY ON G1000 COVER SHEET)

Seals and Signatures



**ARCHITECTS/ENGINEERS:**

**LEO A DAILY**  
550 South Hope Street, 27<sup>th</sup> Floor  
Los Angeles, California 90071, USA  
213-629-0100 F213-629-0070

PLANNING  
ARCHITECTURE  
ENGINEERING  
INTERIORS  
EST. 1915

Drawing Title  
**REFLECTED CEILING PLAN -  
LEVEL 3 - AREA D**

Approved: Project Director

Project Title  
**CONSTRUCT OPERATING  
ROOM #8**

Location  
11201 BENTON STREET  
LOMA LINDA, CA 92357  
Date  
03/30/2016  
Checked  
MS  
Drawn  
TV

Project Number  
605-14-640

Building Number  
1

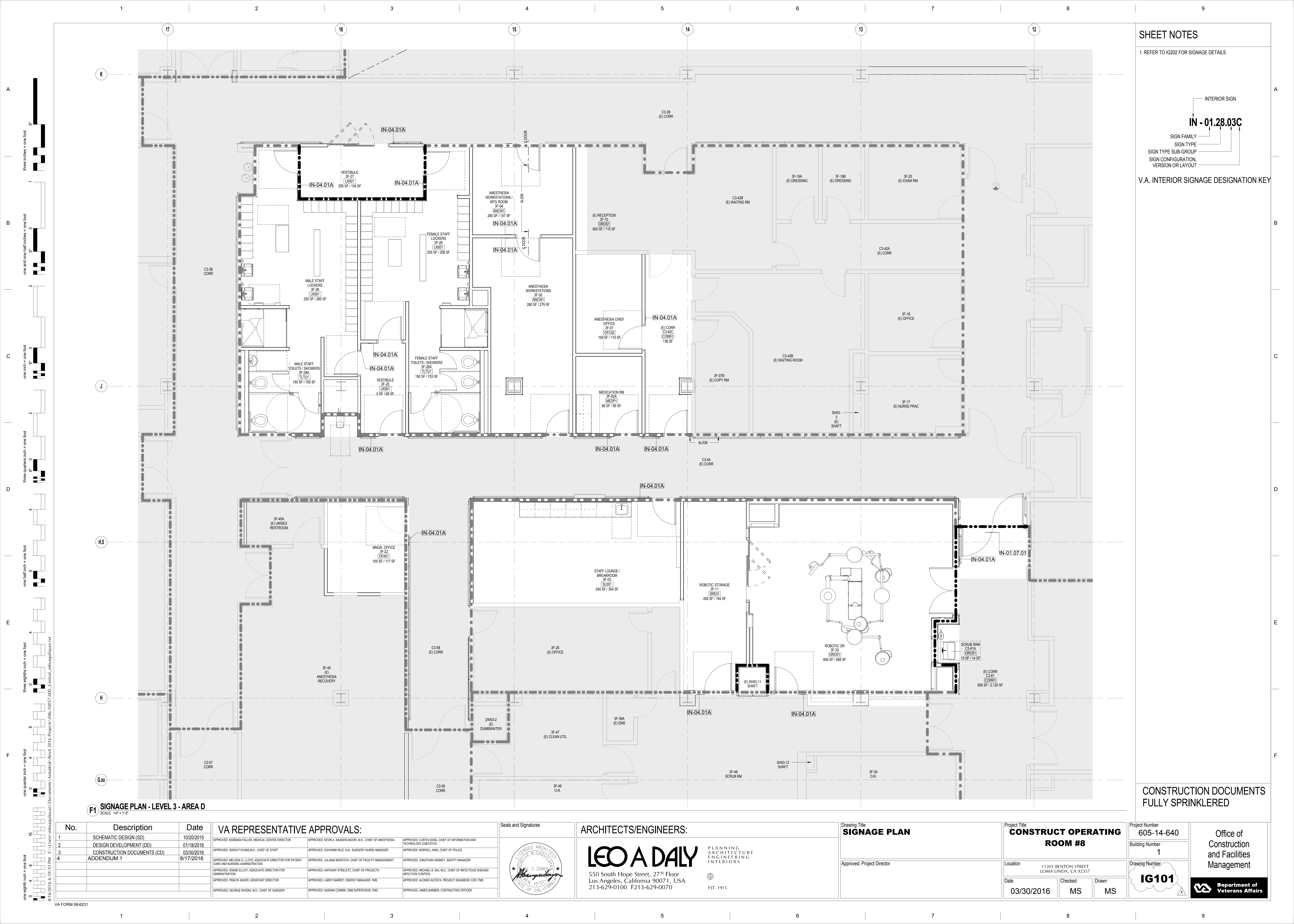
Drawing Number  
**AE102**

Office of  
Construction and  
Facilities  
Management



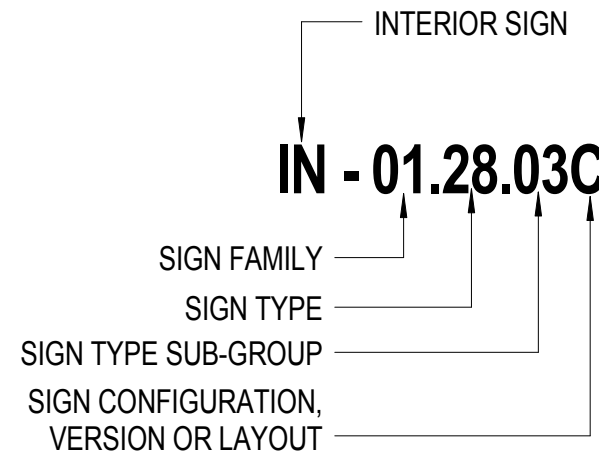






SHEET NOTES

1. REFER TO IG202 FOR SIGNAGE DETAILS



V.A. INTERIOR SIGNAGE DESIGNATION KEY

CONSTRUCTION DOCUMENTS  
FULLY SPRINKLERED

**F1 SIGNAGE PLAN - LEVEL 3 - AREA D**  
SCALE: 1/4" = 1'-0"

No.	Description	Date
1	SCHEMATIC DESIGN (SD)	10/20/2015
2	DESIGN DEVELOPMENT (DD)	01/18/2016
3	CONSTRUCTION DOCUMENTS (CD)	03/30/2016
4	ADDENDUM 1	8/17/2016

VA REPRESENTATIVE APPROVALS:		
APPROVED: BARBARA FALLEN, MEDICAL CENTER DIRECTOR	APPROVED: KEVIN A. NASSER-NOOR, M.D., CHIEF OF ANESTHESIA	APPROVED: CURTIS SOND, CHIEF OF INFORMATION AND TECHNOLOGY (D&IT/FOID)
APPROVED: DWIGHT EVANS, M.D., CHIEF OF STAFF	APPROVED: GIOVANNI RUZ, R.N., SURGERY NURSE MANAGER	APPROVED: NORVELL KING, CHIEF OF POLICE
APPROVED: MELISSA G. LLOYD, ASSOCIATE DIRECTOR FOR PATIENT CARE AND NURSING ADMINISTRATION	APPROVED: JULIANA MONTROYA, CHIEF OF FACILITY MANAGEMENT	APPROVED: JONATHAN VINSEY, SAFETY MANAGER
APPROVED: SHANE ELLIOT, ASSOCIATE DIRECTOR FOR ADMINISTRATION	APPROVED: ANTHONY STRELETZ, CHIEF OF PROJECTS	APPROVED: MICHAEL B. ING, M.D., CHIEF OF INFECTIOUS DISEASE/ INFECTION CONTROL
APPROVED: PRACHI ASHER, ASSISTANT DIRECTOR	APPROVED: LARRY BARRET, ENERGY MANAGER, FMS	APPROVED: ALONSO ACCOSTA, PROJECT ENGINEER/ COR, FMS
APPROVED: GEORGE RIVERA, M.D., CHIEF OF SURGERY	APPROVED: HASSAN CORBIN, OAM SUPERVISOR, FMS	APPROVED: JAMES BARBER, CONTRACTING OFFICER

Seals and Signatures

LICENSED ARCHITECT  
MICHAEL B. DAILY  
C 32669  
EXPIRES 10-31-2017  
STATE OF CALIFORNIA

ARCHITECTS/ENGINEERS:

**LEO A DAILY**  
550 South Hope Street, 27<sup>th</sup> Floor  
Los Angeles, California 90071, USA  
213-629-0100 F213-629-0070

PLANNING  
ARCHITECTURE  
ENGINEERING  
INTERIORS  
EST. 1915

Drawing Title  
**SIGNAGE PLAN**

Approved: Project Director

Project Title  
**CONSTRUCT OPERATING  
ROOM #8**

Location  
11201 BENTON STREET  
LOMA LINDA, CA 92357

Date  
03/30/2016

Checked  
MS

Drawn  
MS

Project Number  
605-14-640

Building Number  
1

Drawing Number  
**IG101**

Office of  
Construction  
and Facilities  
Management



A

B

C

D

E

F

A

B

C

D

E

F

three inches = one foot  
one and one half inches = one foot  
one inch = one foot  
three quarters inch = one foot  
one half inch = one foot  
three eighths inch = one foot  
one quarter inch = one foot  
one eighth inch = one foot

No.	Description	Date
1	SCHEMATIC DESIGN (SD)	10/20/2015
2	DESIGN DEVELOPMENT (DD)	01/18/2016
3	CONSTRUCTION DOCUMENTS (CD)	03/30/2016
4	ADDENDUM 1	8/17/2016

VA REPRESENTATIVE APPROVALS:		
APPROVED: BARBARA FALLEN, MEDICAL CENTER DIRECTOR	APPROVED: KEVIN A. NASSER-NOOR, M.D., CHIEF OF ANESTHESIA	APPROVED: CURTIS SOND, CHIEF OF INFORMATION AND TECHNOLOGY (D&IT)/CIO
APPROVED: DWIGHT EVANS, M.D., CHIEF OF STAFF	APPROVED: GIOVANNI RUIZ, R.N., SURGERY NURSE MANAGER	APPROVED: NORVELL KING, CHIEF OF POLICE
APPROVED: MELISSA G. LLOYD, ASSOCIATE DIRECTOR FOR PATIENT CARE AND NURSING ADMINISTRATION	APPROVED: JULIANA MONTOYA, CHIEF OF FACILITY MANAGEMENT	APPROVED: JONATHAN VINSKEY, SAFETY MANAGER
APPROVED: SHANE ELLIOT, ASSOCIATE DIRECTOR FOR ADMINISTRATION	APPROVED: ANTHONY STRELETZ, CHIEF OF PROJECTS	APPROVED: MICHAEL B. ING, M.D., CHIEF OF INFECTIOUS DISEASE/INFECTION CONTROL
APPROVED: PRAOCH ASHER, ASSISTANT DIRECTOR	APPROVED: LARRY BARRET, ENERGY MANAGER, FMS	APPROVED: ALONSO ACOSTA, PROJECT ENGINEER/ICR, FMS
APPROVED: GEORGE RIVERA, M.D., CHIEF OF SURGERY	APPROVED: HASSAN CORBIN, OAM SUPERVISOR, FMS	APPROVED: JAMES BARBER, CONTRACTING OFFICER

Seals and Signatures

ARCHITECTS/ENGINEERS:

**LEO A DAILY**  
550 South Hope Street, 27<sup>th</sup> Floor  
Los Angeles, California 90071, USA  
213-629-0100 F213-629-0070

PLANNING  
ARCHITECTURE  
ENGINEERING  
INTERIORS  
EST. 1915

Drawing Title

**INTERIOR SIGNAGE DETAILS**

Approved: Project Director

Project Title

**CONSTRUCT OPERATING ROOM #8**

Location  
11201 BENTON STREET  
LOMA LINDA, CA 92357

Date  
03/30/2016

Checked  
MS

Drawn  
MS

Project Number  
605-14-640

Building Number  
1

Drawing Number  
**IG201**

Office of Construction and Facilities Management