

CONNECTION POSITION WITH REFERENCE POINT				
SINGLE CHAMBER				
	DESCRIPTION	X	Y	Z
010A	HOT WATER	2 7/16 [62]	79 7/8 [2029]	10 3/4 [273]
010B	COLD WATER	2 7/16 [62]	79 7/8 [2029]	13 1/4 [337]
021	PURE WATER	2 7/16 [62]	79 7/8 [2029]	8 1/4 [210]
040	STEAM	39 1/16 [992]	80 [2032]	16 1/2 [419]
051	AIR	14 7/16 [367]	80 7/16 [2043]	20 [508]
086	VENTILATION	4 5/16 [109]	72 1/8 [1832]	26 [660]
060	DRAIN CONNECTION	4 1/8 [105] RECOMMENDED MIN 4 1/8 [105] MAX 16 1/2 [419]	FLOOR	16 [406] RECOMMENDED MIN 8 1/2 [216] MAX 27 [686]
046	CONDENSATE RETURN	39 1/16 [992]	80 [2032]	14 [356]
090	ELECTRICAL	38 3/16 [970] APPROX.	78 7/8 [2003]	8 1/4 [210] APPROX.


1. MINIMUM DIMENSION FOR DOOR REMOVAL WITH LIMITED LEVELING ADJUSTMENT AVAILABLE  
+ 0 [0]  
-3/4 [19.1].  
THE STANDARD BARRIER WALL FLANGE CAN'T BE USE AT THAT DIMENSION.

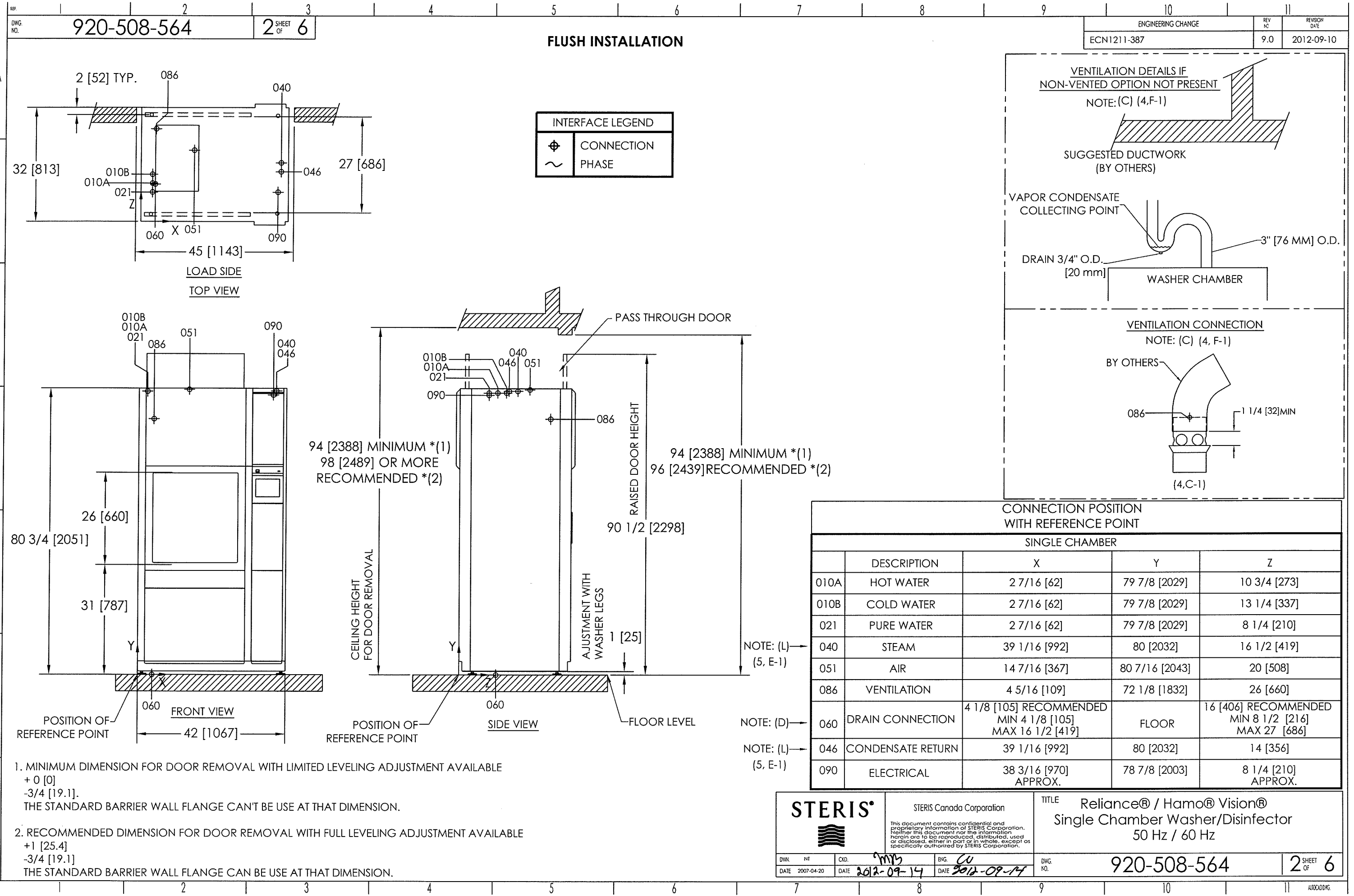
2. RECOMMENDED DIMENSION FOR DOOR REMOVAL WITH FULL LEVELING ADJUSTMENT AVAILABLE  
+1 [25.4]  
-3/4 [19.1]  
THE STANDARD BARRIER WALL FLANGE CAN BE USE AT THAT DIMENSION.

NOTE: (L)→  
(5, E-1)

NOTE: (D)→

NOTE: (L)→  
(5, E-1)

			STERIS Canada Corporation This document contains confidential and proprietary information of STERIS Corporation. Neither this document nor the information herein are to be reproduced, distributed, used or disclosed, either in part or in whole, except as specifically authorized by STERIS Corporation.			TITLE Reliance® / Hamo® Vision® Single Chamber Washer/Disinfecter 50 Hz / 60 Hz		
DWRN	NT	CKD.	ENG.	DWG. NO.	920-508-564			1 SHEET OF 6
DATE	2007-04-20	DATE	2007-09-14					



REF. 2 3 4 5 6 7 8 9 10 11

DWG. NO. 920-508-564 2 SHEET OF 6

A

B

C

D

E

F

H


1. MINIMUM DIMENSION FOR DOOR REMOVAL WITH LIMITED LEVELING ADJUSTMENT AVAILABLE  
+ 0 [0]  
- 3/4 [19.1].  
THE STANDARD BARRIER WALL FLANGE CAN'T BE USE AT THAT DIMENSION.
2. RECOMMENDED DIMENSION FOR DOOR REMOVAL WITH FULL LEVELING ADJUSTMENT AVAILABLE  
+ 1 [25.4]  
- 3/4 [19.1]  
THE STANDARD BARRIER WALL FLANGE CAN BE USE AT THAT DIMENSION.

NOTE: (L) →  
(5, E-1)

NOTE: (D) →

NOTE: (L) →  
(5, E-1)

CONNECTION POSITION WITH REFERENCE POINT				
SINGLE CHAMBER				
	DESCRIPTION	X	Y	Z
010A	HOT WATER	2 7/16 [62]	79 7/8 [2029]	10 3/4 [273]
010B	COLD WATER	2 7/16 [62]	79 7/8 [2029]	13 1/4 [337]
021	PURE WATER	2 7/16 [62]	79 7/8 [2029]	8 1/4 [210]
040	STEAM	39 1/16 [992]	80 [2032]	16 1/2 [419]
051	AIR	14 7/16 [367]	80 7/16 [2043]	20 [508]
086	VENTILATION	4 5/16 [109]	72 1/8 [1832]	26 [660]
060	DRAIN CONNECTION	4 1/8 [105] RECOMMENDED MIN 4 1/8 [105] MAX 16 1/2 [419]	FLOOR	16 [406] RECOMMENDED MIN 8 1/2 [216] MAX 27 [686]
046	CONDENSATE RETURN	39 1/16 [992]	80 [2032]	14 [356]
090	ELECTRICAL	38 3/16 [970] APPROX.	78 7/8 [2003]	8 1/4 [210] APPROX.

**STERIS**  


STERIS Canada Corporation  
This document contains confidential and proprietary information of STERIS Corporation. Neither this document nor the information herein are to be reproduced, distributed, used or disclosed, either in part or in whole, except as specifically authorized by STERIS Corporation.

TITLE  
Reliance® / Hamo® Vision®  
Single Chamber Washer/Disinfector  
50 Hz / 60 Hz

DWG. NO. 920-508-564 2 SHEET OF 6

DWN. NT  
DATE 2007-04-20

CKD. *mm*  
DATE 2012-09-14

ENG. *CU*  
DATE 2012-09-14





REF.

DWG. NO.

1

2

3

4

5

6

7

8

9

10

11

920-508-564

5 SHEET OF 6

ENGINEERING CHANGE

ECN1211-387

REV NO

9.0

REVISION DATE

2012-09-10

UTILITIES

INSTRUMENT CYCLE (H)

USTENSILS (I)

HOT WATER (SUMP)

COLD WATER (SUMP)

COLD WATER FOR NON-VENTED (OPTION)

COLD WATER FOR DRAIN DISCHARGE COOL DOWN (OPTION)

COLD WATER FOR CONDENSATE RETURN COOL DOWN (OPTION) W CONDENSER

COLD WATER FOR CONDENSATE RETURN COOL DOWN (OPTION) W/O CONDENSER

PURE WATER ( IF REQUIRED)

STEAM

DETERGENT

PROLYSTICA ENZYME ULTRA-CONCENTRATE

PROLYSTICA LUBRICANT ULTRA-CONCENTRATE 60Hz

RINSE-AID (50Hz)

(K)

US GAL [L]

(K)

US GAL [L]

(K)

US GAL [L]

(K)

US GAL [L]

(K)

US GAL [L]

(K)

US GAL [L]

(K)

LB [KG]

(K)

OZ [ML]

(K)

OZ [ML]

(K)

OZ [ML]

(K)

OZ [ML]

PRE-WASH

WASH

RINSE

THERMAL RINSE

DRYING

TOTAL/CYCLE

3.1 [11.73] (P)

7.0 [26.5] (J)

7.0 [26.5] (J)

3.1 [11.7]

3.7 [14.0]

3.4 [12.87]

7.0 [26.5] (J)

7.4 [3.36]

0.7 [21.2]

0.7 [21.2]

0.175 [5.3]

1.7 [13.3]

17.1 [64.73] (O)

10.9 [41.6] (Q)

13.1 [49.59]

11.6 [43.9]

8.1 [30.66]

7.4 [28.01]

7.0 [26.5] (J)

16.2 [7.35]

0.7 [21.2]

0.7 [21.2]

0.175 [5.3]

1.7 [13.3]

HEAT LOSS BTU/HR [AT 75°F(24C)]

VENTED

6299 [1844]

NON VENTED

8950 [2621]

(F) SEE OPERATING VOLTAGE BOARD.

(G) BACK FLOW PREVENTER AGAINST BACK SIPHONAGE MAY BE REQUIRED ON COLD WATER LINE ACCORDING TO LOCAL PLUMBING CODE (1;2, B-2). FOR HOT AND PURE WATER, BACK FLOW PREVENTER IS NOT REQUIRED.

(H) BASED ON INSTRUMENT CYCLE (WITH DEFAULT VALUES, SEE CYCLE DESCRIPTION CHART)

(I) BASED ON USTENSILS CYCLE (WITH DEFAULT VALUES, SEE CYCLE DESCRIPTION CHART)

(J) IF ELECTRIC HEATED UNIT : 7.7 [29.1]

(K) UTILITIES CONDITIONS: COLD WATER : 30 Psig DYNAMIC  
STEAM : 50 Psig DYNAMIC  
HOT WATER TEMP : 110°F (43°C)  
COLD WATER TEMP : 60°F (16°C)  
PURE WATER TEMP : 70°F (21°C)

(L) CONNECTION NOT PRESENT IF ELECTRIC-HEATED UNIT. (1,F-8)

(M) NEUTRAL WIRE NOT REQUIRED

(N) AMPERAGE AND CIRCUIT PROTECTION FOR WASHER EQUIPED WITH "40 AMP MINIMUM CIRCUIT PROTECTION" OPTION.

(O) IF ELECTRIC-HEATED UNIT : 19.2 [72.7]

(P) IF ELECTRIC HEATED UNIT : 3.8 [14.38]

(Q) IF ELECTRIC HEATED UNIT : 11.6 [43.9]

STEAM-HEATED UNIT

STANDARD CONFIGURED

WITH 40 AMP MINIMUM CIRCUIT PROTECTION OPTION

ELECTRIC-HEATED UNIT

3 ~ OPERATING VOLTAGE (M)

200/208V 50Hz

200/208V 60Hz

380/400/415V 50Hz

460/480V 60Hz

(N) 200/208V 50Hz

(N) 200/208V 60Hz

380/400/415V 50Hz

460/480V 60Hz

NOMINAL AMPERAGE

36A

36A

20A

17A

32A

32A

32A

30A

RECOMMENDED CIRCUIT PROTECTION

50A \*

50A \*

25A \*

25A \*

40A \*

40A \*

40A \*

40A \*

\* ALWAYS FOLLOW LOCAL ELECTRICAL CODES AND SAFETY-RELATED WORK PRATICES TO DETERMINE THE VALUE OF PROTECTION.

STERIS®

STERIS Canada Corporation

This document contains confidential and proprietary information of STERIS Corporation. Neither this document nor the information herein are to be reproduced, distributed, used or disclosed, either in part or in whole, except as specifically authorized by STERIS Corporation.

DATE

2007-04-20

DATE

2012-09-14

DATE

2012-09-14

ENG.

CU

DATE

2012-09-14

DWG. NO.

920-508-564

5 SHEET OF

6

