

0 6" three inches = one foot
0 6" one and one half inches = one foot
0 6" one inch = one foot
0 6" three quarters inch = one foot
0 6" one half inch = one foot
0 4" three eighths inch = one foot
0 4" one quarter inch = one foot
0 16" one eighth inch = one foot

Record Documents 09.28.2012

This record drawing has been prepared, in part, based upon information furnished by others. While this information is believed to be reliable, the Architect assumes no responsibility for the accuracy of this record drawing or for any errors or omissions that may have been incorporated into it as a result of incorrect information provided to the Architect. Those relying on this record document are advised to obtain independent verification of its accuracy.

REVISION	DATE
15% Submittal	09/04/09
65% Submittal	10/14/09
95% Submittal	11/13/09
100% Submittal	12/11/09
Bid Submittal	01/08/10
BID SET DOCUMENTS w/VA Revisions	01/20/10
RECORD DOCUMENTS	09/28/12

CONSULTANTS:

H HADDAD ENGINEERING, INC.
2955 HARTLEY ROAD, SUITE 205 JACKSONVILLE, FL. 32257
TELEPHONE : (904) 262-5086 FAX : (904) 262-7139
CERTIFICATE OF AUTHORIZATION NO. 4000

ARCHITECT/ENGINEERS:

ttv architects, inc.
15 EAST FORESTHILL
JACKSONVILLE, FLORIDA 32202
T 904.798.0333
F 904.798.0333
WWW.TTVARCHITECTS.COM
FL LICENSE NO. 38120

09-28-12 RECORD DOCUMENTS

Drawing Title
SECOND FLOOR PLAN
DEMO - HVAC

Approved Project Director

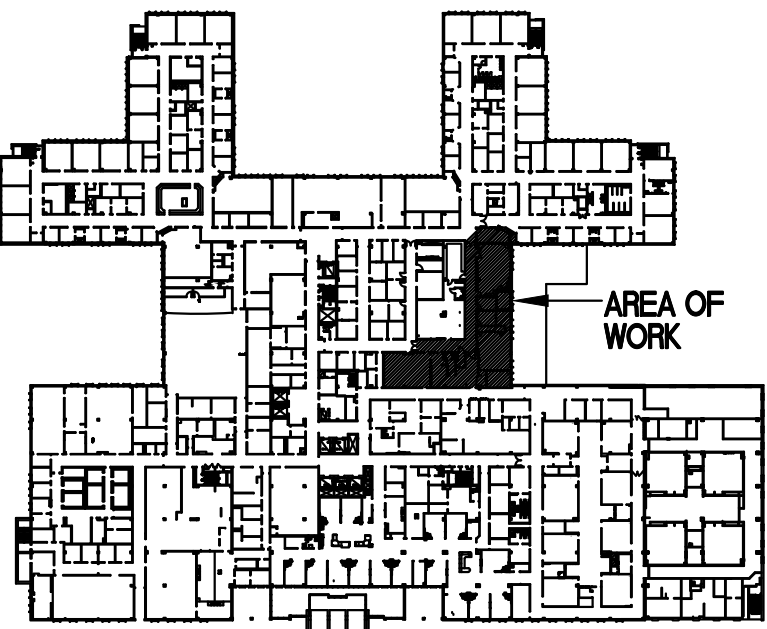
Project Title
ELECTROPHYSIOLOGY (EP) LAB
SITE PREP PROJECT

Location
JAMES A. HALEY VETERANS' HOSPITAL
Date 09/28/2012
Checked SL
Drawn JB

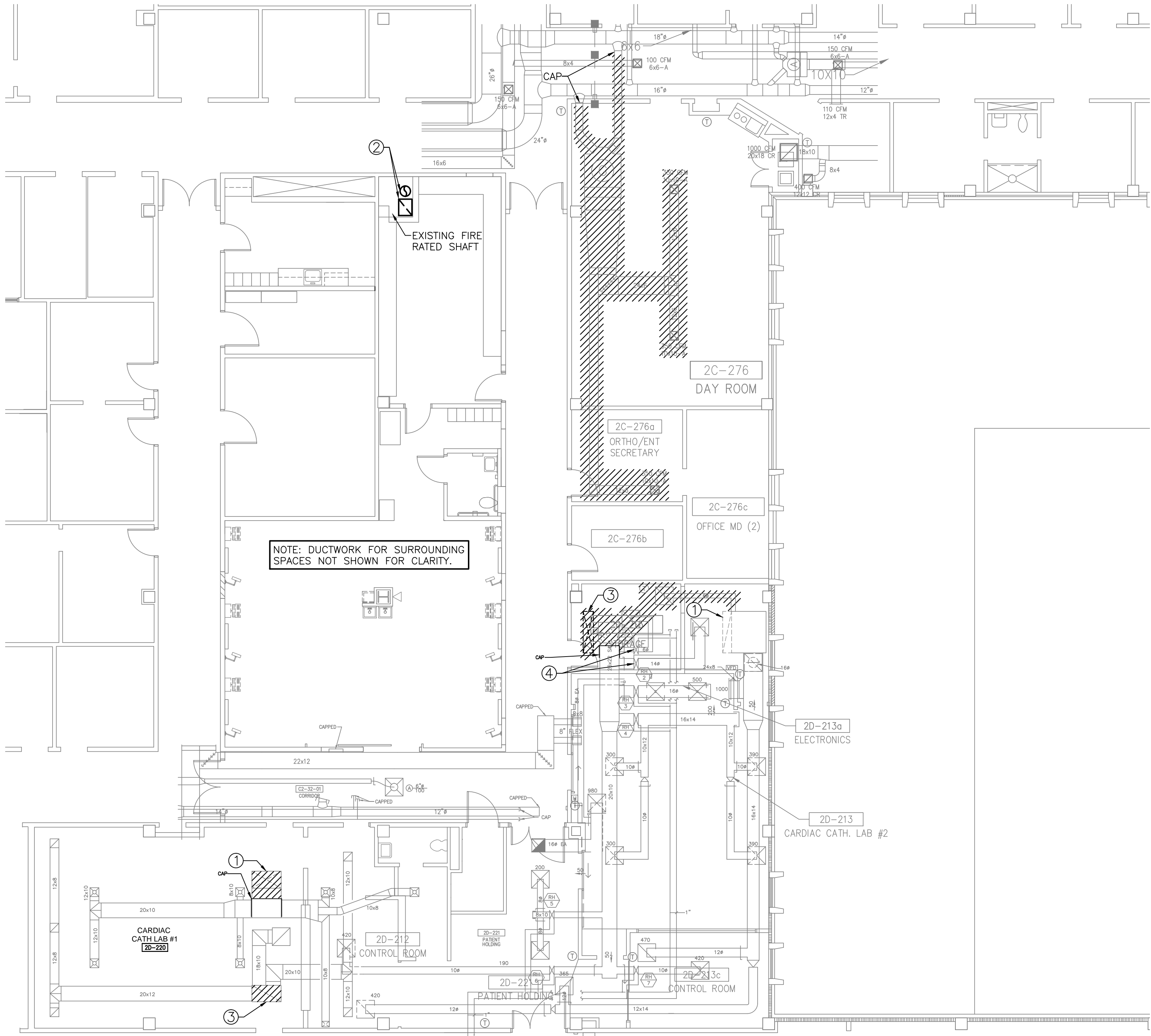
Project Number
673-09-102
Building Number
1
Drawing Number
MH102
Dwg. 2 of 5

Office of
Construction
and Facilities
Management

Department of
Veterans Affairs



KEY PLAN



NOTES:

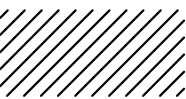
- ① APPROXIMATE LOCATION OF EXISTING ROOF PENETRATION FROM ROOFTOP UNIT ABOVE. ROOFTOP UNIT TO BE REMOVED, RETURN DUCTWORK TO BE REMOVED WHERE INDICATED.
- ② APPROXIMATE LOCATION OF EXISTING ROOF PENETRATION FROM ROOFTOP UNIT ABOVE. ROOFTOP UNIT TO BE REMOVED, DUCTWORK TO REMAIN BELOW ROOF DECK. REFER TO SHEET MH105 FOR POINT OF CONNECTION OF NEW DUCTWORK ON ROOF.
- ③ APPROXIMATE LOCATION OF EXISTING ROOF PENETRATION FROM ROOFTOP UNIT ABOVE. ROOFTOP UNIT TO BE REMOVED, SUPPLY DUCTWORK TO BE REMOVED WHERE INDICATED.
- ④ REMOVE EXISTING DUCT MOUNTED HOT WATER REHEAT COIL AND CAP PIPING.

SECOND FLOOR PLAN DEMO - HVAC

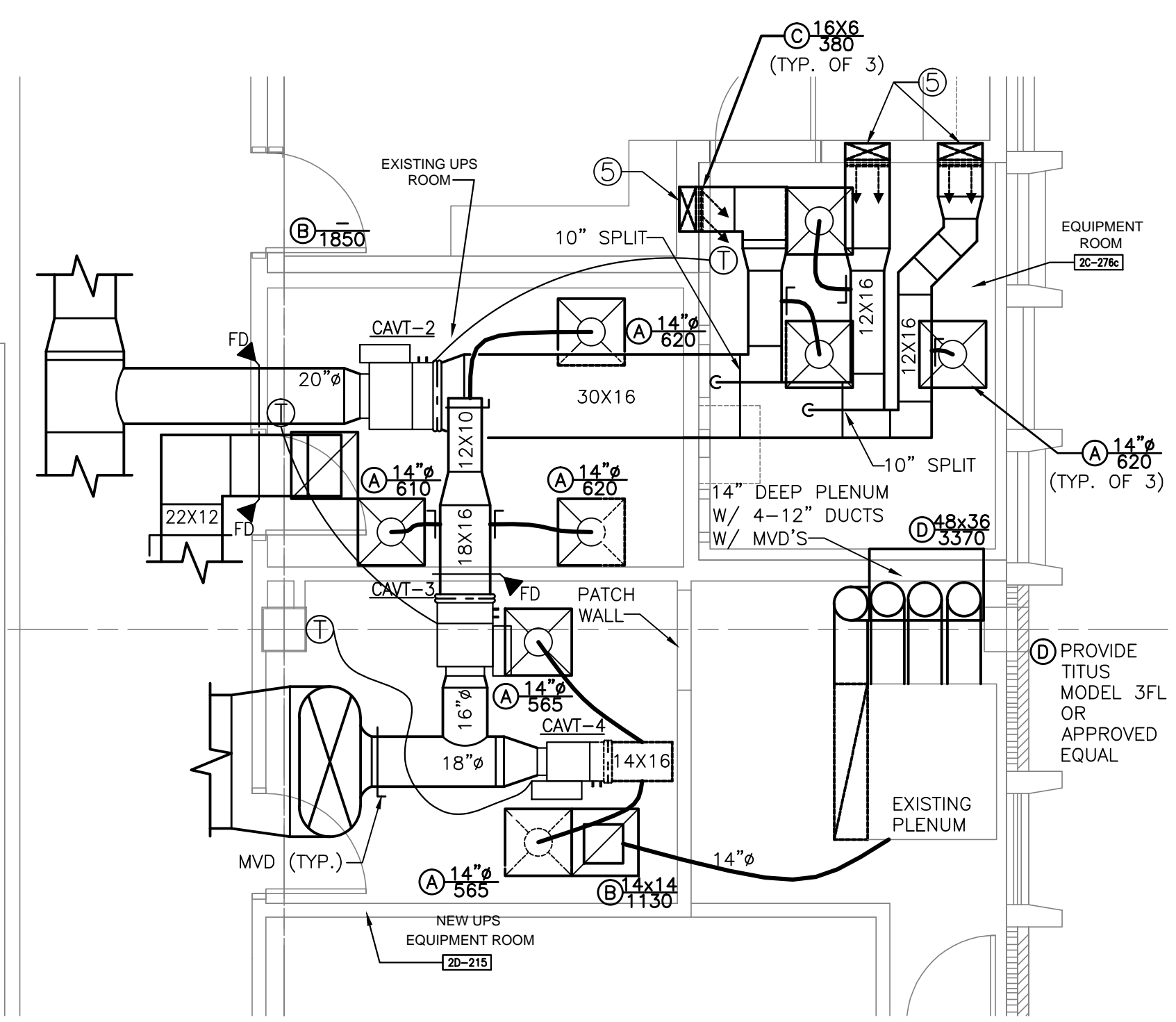
SCALE: 1/8" = 1'-0"



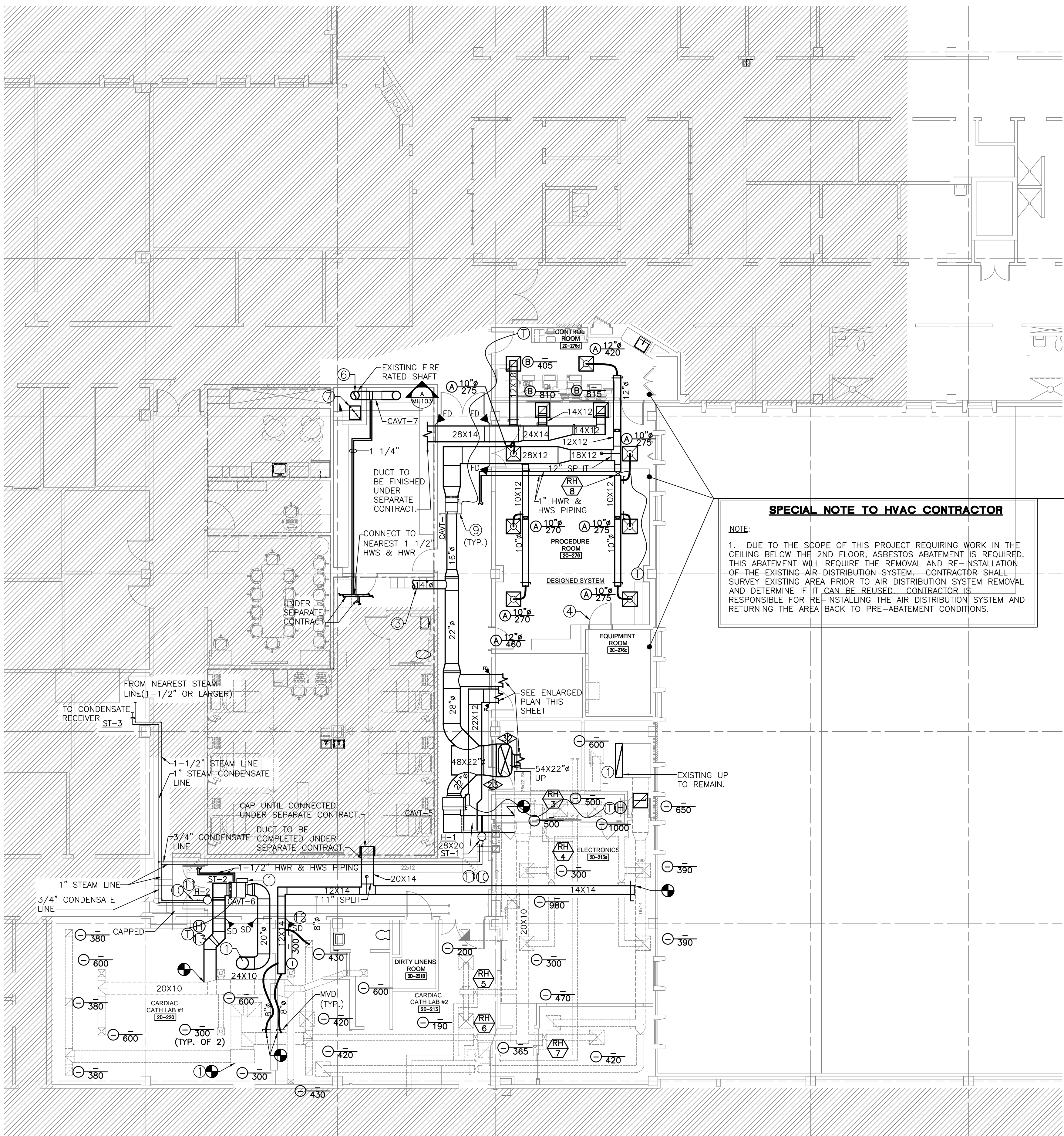
HATCH INDICATES ITEMS TO BE REMOVED



three inches = one foot
one and one half inches = one foot
one inch = one foot
three quarters inch = one foot
one half inch = one foot
three eighths inch = one foot
one quarter inch = one foot
one eighth inch = one foot



ENLARGED SECOND FLOOR PLAN-HVAC
SCALE: 1/4" = 1'-0"

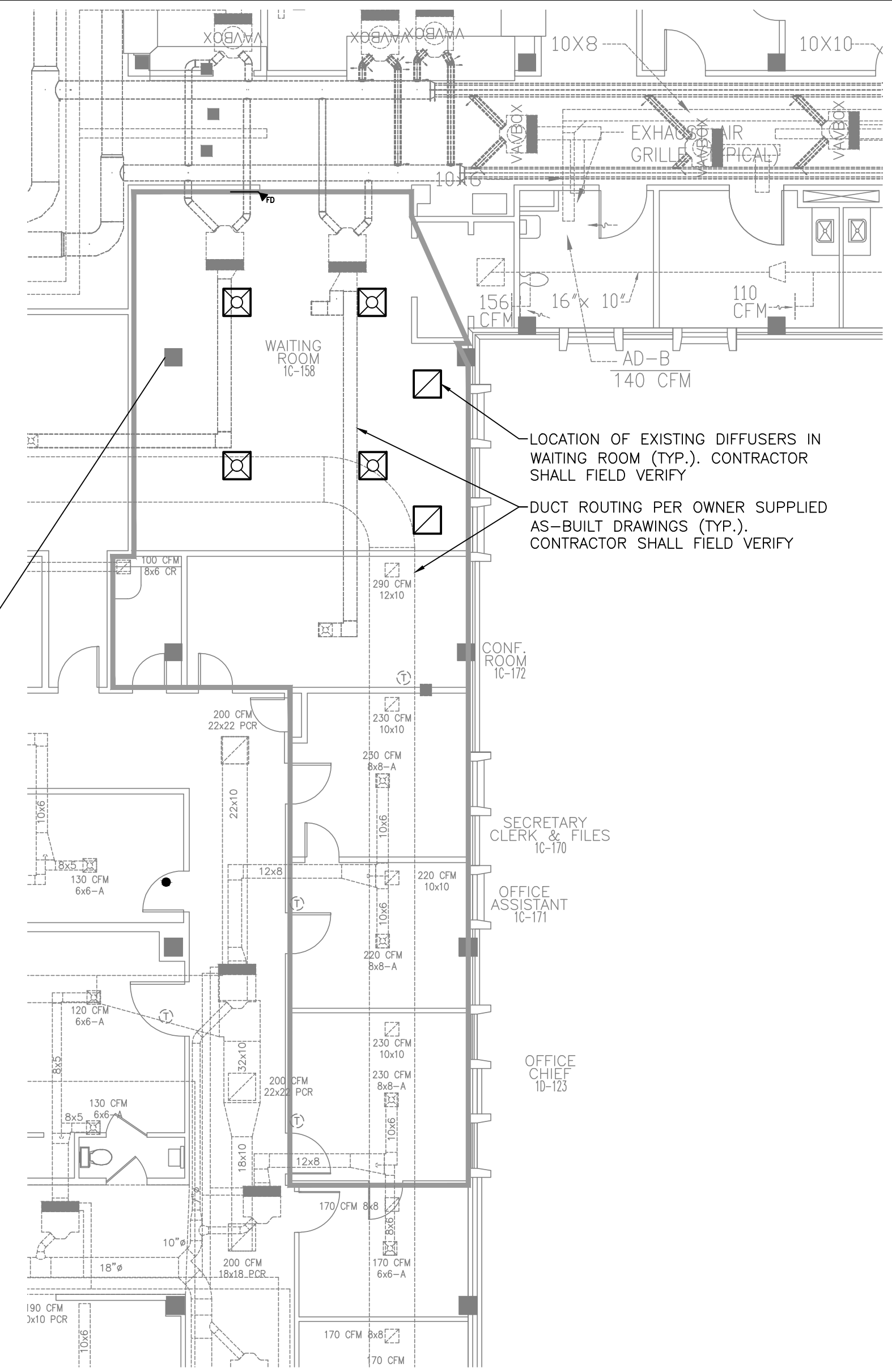


SECOND FLOOR PLAN-HVAC
SCALE: 1/8" = 1'-0"
NOT IN SCOPE OF WORK

KEYED NOTES:

- APPROXIMATE LOCATION OF EXISTING ROOF PENETRATION. ROUTE NEW DUCTWORK DOWN THRU PENETRATION AND TIE INTO EXISTING DUCTWORK WHERE SHOWN.
- APPROXIMATE LOCATION FOR NEW CONSTANT AIR VOLUME TERMINAL (CAVT). CONNECT TO EXISTING DUCTWORK. CONTRACTOR SHALL FIELD VERIFY EXACT ROUTING OF EXISTING DUCTWORK AND ADJUST CAVT LOCATION ACCORDINGLY.
- DUCTWORK TO FUTURE EP LAB RECOVERY UNDER SEPARATE CONTRACT.
- POST A SIGN ON THIS DOOR STATING: KEEP BOTH DOORS CLOSED AT ALL TIMES TO MAINTAIN ROOM TEMPERATURE CONTROL.
- 16X6 SUPPLY DUCT DOWN IN WALL. DIFFUSER DISCHARGE SHALL BE AT FLOOR LEVEL.
- EXISTING 14" HIGH VELOCITY DUCT FROM ROOF DOWN TO FIRST FLOOR. CONTRACTOR SHALL VERIFY THE DUCT IS RATED FOR 3" W.G., AND REINFORCE/REPLACE AS REQUIRED.
- EXISTING 22X18 MEDIUM PRESSURE RETURN DUCT FROM FIRST FLOOR UP TO ROOF. CONTRACTOR SHALL VERIFY THE DUCT IS MINIMUM 1" W.G., AND REINFORCE/REPLACE AS REQUIRED.
- DUCT MOUNTED REHEAT COIL, 825 CFM, 5.6 GPM
- DUCTWORK DOWNSTREAM OF CAVT BOXES IS RATED FOR 1" W.G.
- CONNECT TO EXISTING STEAM LINE.
- PROVIDE STAINLESS STEEL DUCT SECTION 24" UPSTREAM AND 24" DOWNSTREAM OF HUMIDIFIER. FACE LENGTH SHALL BE 20"
- SUGGESTED MODIFICATIONS PER RFI #42.
- ROUTE THRU UNISTRUT.

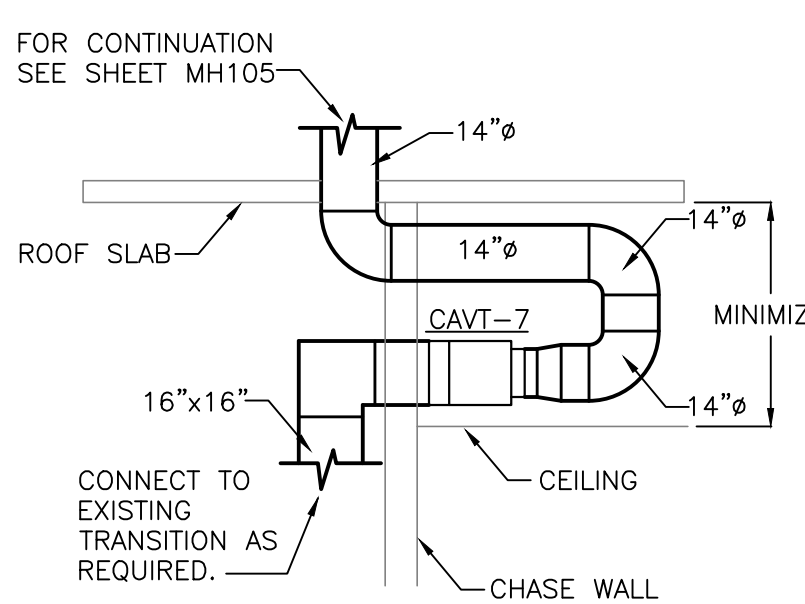
SPECIAL NOTE TO HVAC CONTRACTOR
NOTE:
1. DUE TO THE SCOPE OF THIS PROJECT REQUIRING WORK IN THE CEILING BELOW THE 2ND FLOOR, ASBESTOS ABATEMENT IS REQUIRED. THIS ABATEMENT WILL REQUIRE THE REMOVAL AND RE-INSTALLATION OF THE EXISTING AIR-DISTRIBUTION SYSTEM. CONTRACTOR SHALL SURVEY EXISTING AREA PRIOR TO AIR DISTRIBUTION SYSTEM REMOVAL AND DETERMINE IF IT CAN BE REUSED. CONTRACTOR IS RESPONSIBLE FOR RE-INSTALLING THE AIR DISTRIBUTION SYSTEM AND RETURNING THE AREA BACK TO PRE-ABATEMENT CONDITIONS.



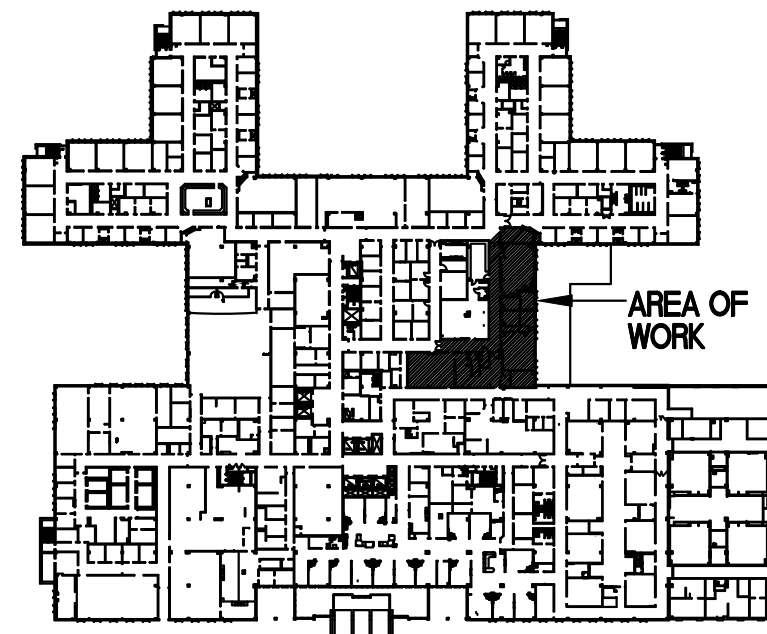
FIRST FLOOR PLAN-EXISTING HVAC
SCALE: 1/8" = 1'-0"

CAVT SCHEDULE	
UNIT NO.	CAVT-7
SERVES	REPLACES AC/39
INLET SIZE (INCHES)	12
AIR FLOW (CFM-MIN/MAX.)	1600 / 1600
HEATING MINIMUM CFM	1600
MAXIMUM S.P. (IN. W.G.)	0.34
SOUND RATING (NC)	< 20
HEATING COIL TYPE	HOT WATER
CAPACITY TOTAL (MBH)	43.2
COIL ROWS	1
ENT. AIR/LVG. AIR dB/dB (F)	55/80
MAX. AIR P.D. (IN. W.G.)	0.25
WATER FLOW RATE (GPM)	8.6
ENT./LVG. WATER TEMPERATURE	120/110
MAX. WATER P.D. (FT. W.G.)	5
MANUFACTURER	TITUS
MODEL NO.	DES-12
NOTES	1, 2, 3

NOTES:
1. NC VALUES SCHEDULED ARE DISCHARGE RATINGS WITH AN INLET TO DISCHARGE STATIC PRESSURE DIFFERENCE OF 0.50" w. g. MANUFACTURER'S OTHER THAN THE BASIS OF DESIGN MUST BE WITHIN 1" dB OF ALL DISCHARGE AND RADIATION SOUND POWER VALUES CATALOGED BY THE MANUFACTURER OF THE BASIS OF DESIGN OR ADDITIONAL ATTENUATION MUST BE FURNISHED.
2. CONTROLS FOR A COMPLETE AND OPERABLE SYSTEM SHALL BE PROVIDED AND INSTALLED BY CONTROL'S CONTRACTOR. SEE MH102 FOR PROPOSED CONTROL PANEL LOCATION.
3. ACCEPTABLE ALTERNATE MANUFACTURERS ARE ETI AND YORK.



SECTION "A"
SCALE: 1/4" = 1'-0"



KEY PLAN

Record Documents 09.28.2012

This record drawing has been prepared, in part, based upon information furnished by others. While this information is believed to be reliable, the Architect assumes no responsibility for the accuracy of this record drawing or for any errors or omissions that may have been incorporated into it as a result of incorrect information provided to the Architect. Those relying on this record document are advised to obtain independent verification of its accuracy.

REVISION 15% Submittal 09/04/09 65% Submittal 10/14/09 95% Submittal 11/03/09 100% Submittal 12/17/09 Bld Submittal 01/08/10 BID SET DOCUMENTS w/VA Revisions 01/20/10 RECORD DOCUMENTS 09/28/12	DATE 09/04/09 10/14/09 11/03/09 12/17/09 01/08/10 01/20/10 09/28/12	CONSULTANTS: HE HADDAD ENGINEERING, INC. 2955 HARTLEY ROAD, SUITE 205 JACKSONVILLE, FL 32257 TELEPHONE: (904) 262-5086 FAX: (904) 262-7139 CERTIFICATE OF AUTHORIZATION NO. 4000	ARCHITECT/ENGINEERS: ttv architects, inc. 15 EAST FOREST HILL JACKSONVILLE, FL 32202 1 904 798-0333 F 904 798-0335 WWW.TTVARCHITECTS.COM FL LICENSE #000009	Drawing Title SECOND FLOOR PLAN HVAC Approved Project Director	Project Title ELECTROPHYSIOLOGY (EP) LAB SITE PREP PROJECT Date 09/28/2012 Checked SL Drawn JB	Project Number 673-09-102 Building Number 1 Drawing Number MH103 Dwg. 3 of 5	Office of Construction and Facilities Management Department of Veterans Affairs
--	---	--	--	--	--	--	---

one eighth inch = one foot
one quarter inch = one foot
one half inch = one foot
three eighths inch = one foot
one inch = one foot
one and one half inches = one foot
two inches = one foot
three inches = one foot
four inches = one foot
six inches = one foot
eight inches = one foot
ten inches = one foot
twelve inches = one foot
fourteen inches = one foot
sixteen inches = one foot
eighteen inches = one foot
twenty inches = one foot
twenty-two inches = one foot
twenty-four inches = one foot
twenty-six inches = one foot
twenty-eight inches = one foot
thirty inches = one foot
thirty-two inches = one foot
thirty-four inches = one foot
thirty-six inches = one foot
thirty-eight inches = one foot
forty inches = one foot
forty-two inches = one foot
forty-four inches = one foot
forty-six inches = one foot
forty-eight inches = one foot
fifty inches = one foot
fifty-two inches = one foot
fifty-four inches = one foot
fifty-six inches = one foot
fifty-eight inches = one foot
sixty inches = one foot
sixty-two inches = one foot
sixty-four inches = one foot
sixty-six inches = one foot
sixty-eight inches = one foot
seventy inches = one foot
seventy-two inches = one foot
seventy-four inches = one foot
seventy-six inches = one foot
seventy-eight inches = one foot
eighty inches = one foot
eighty-two inches = one foot
eighty-four inches = one foot
eighty-six inches = one foot
eighty-eight inches = one foot
ninety inches = one foot
ninety-two inches = one foot
ninety-four inches = one foot
ninety-six inches = one foot
ninety-eight inches = one foot
one hundred inches = one foot

Record Documents

09.28.2012

This record drawing has been prepared, in part, based upon information furnished by others. While this information is believed to be reliable, the Architect assumes no responsibility for the accuracy of this record drawing or for any errors or omissions that may have been incorporated into it as a result of incorrect information provided to the Architect. Those relying on this record document are advised to obtain independent verification of its accuracy.

REVISION	DATE
15% Submittal	09/04/09
65% Submittal	10/14/09
95% Submittal	11/13/09
100% Submittal	12/11/09
Bid Submittal	01/08/10
BID SET DOCUMENTS w/VA Revisions	01/20/10
RECORD DOCUMENTS	09/28/12

CONSULTANTS:

H HADDAD ENGINEERING, INC.
2955 HARTLEY ROAD, SUITE 205 JACKSONVILLE, FL 32257
TELEPHONE: (904) 262-5086 FAX: (904) 262-7139
CERTIFICATE OF AUTHORIZATION NO. 4000

ARCHITECT/ENGINEERS:

ttv architects, inc.
10 EAST FORESTHILL
JACKSONVILLE, FLORIDA 32202
T 904.786.0333
F 904.786.0333
WWW.TTVARCHITECTS.COM
FL LICENSE #00000000

SUZANNE LEVESEUR P.E.
LICENSE NO. 38120

09-28-12 RECORD DOCUMENTS

Drawing Title
**SECOND FLOOR ROOF
PLAN DEMO - HVAC**

Approved Project Director

Project Title
**ELECTROPHYSIOLOGY (EP) LAB
SITE PREP PROJECT**

Location
JAMES A. HALEY VETERANS' HOSPITAL

Date
09/28/2012

Checked
SL

Drawn
JB

Project Number
673-09-102

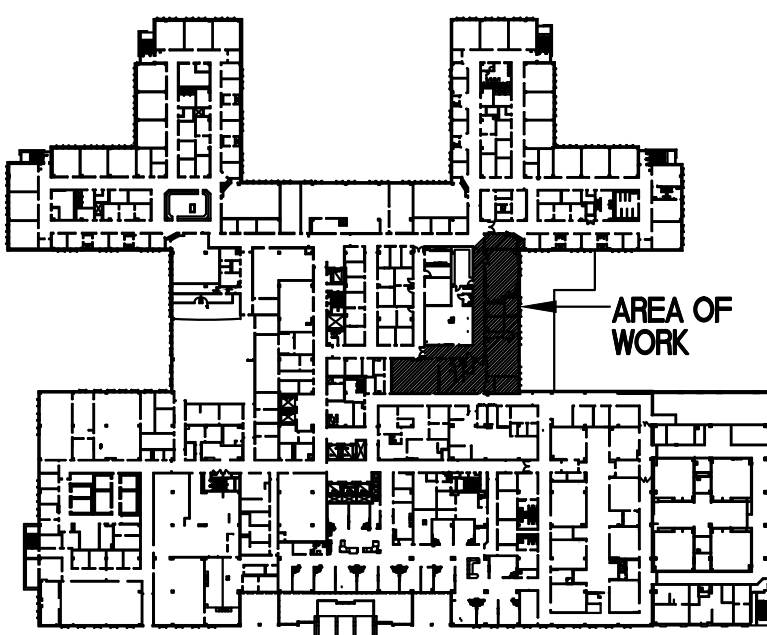
Building Number
1

Drawing Number
MH104

Dwg. 4 of 5

Office of
Construction
and Facilities
Management

Department of
Veterans Affairs

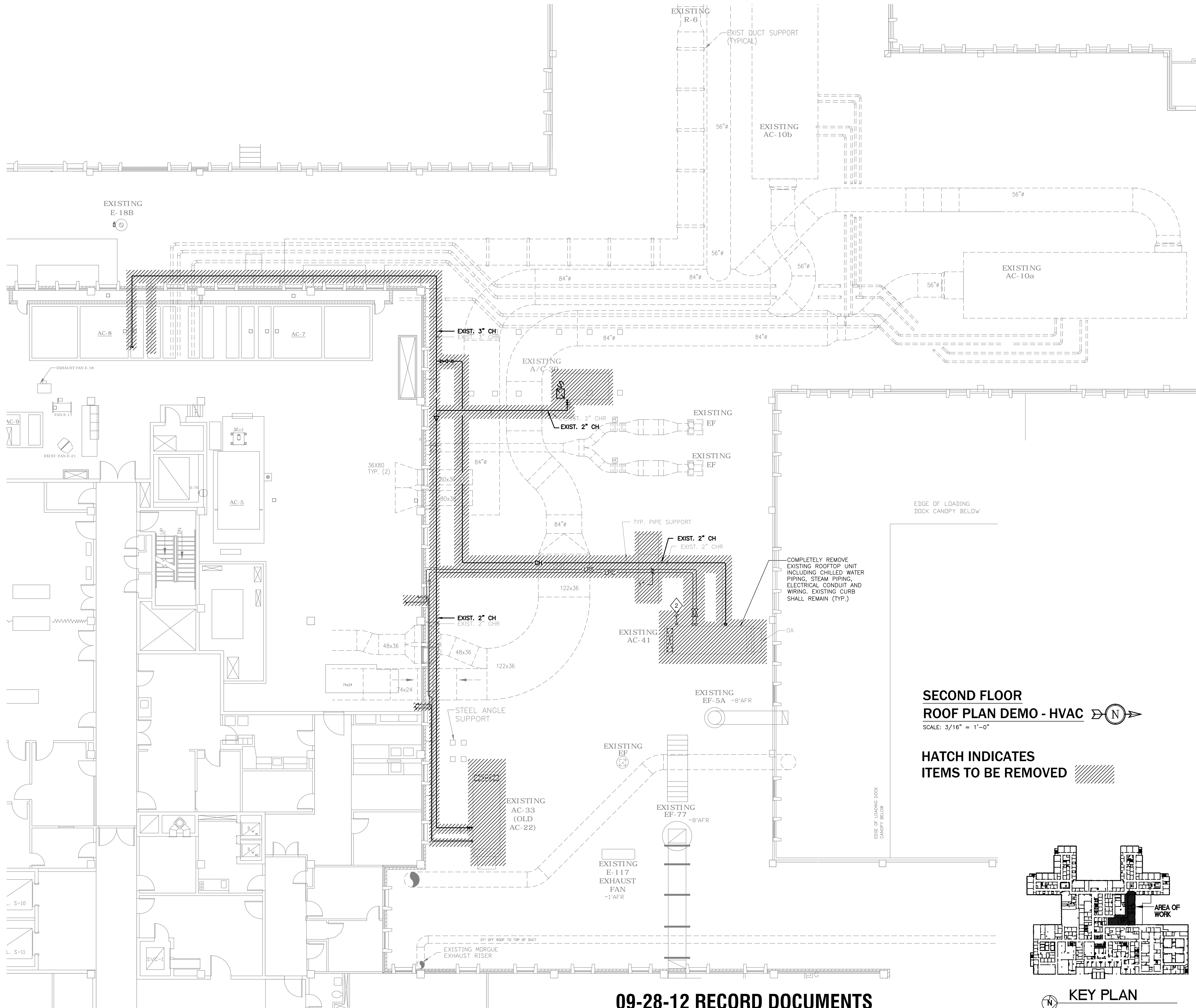
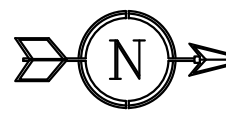


KEY PLAN

SECOND FLOOR ROOF PLAN DEMO - HVAC

SCALE: 3/16" = 1'-0"

HATCH INDICATES
ITEMS TO BE REMOVED



three inches = one foot
one and one half inches = one foot
one inch = one foot
three quarters inch = one foot
one half inch = one foot
three eighths inch = one foot
one quarter inch = one foot
one eighth inch = one foot

Record Documents

09.28.2012

This record drawing has been prepared, in part, based upon information furnished by others. While this information is believed to be reliable, the Architect assumes no responsibility for the accuracy of this record drawing or for any errors or omissions that may have been incorporated into it as a result of incorrect information provided to the Architect. Those relying on this record document are advised to obtain independent verification of its accuracy.

REVISION	DATE
15% Submittal	09/04/09
65% Submittal	10/14/09
95% Submittal	11/3/09
100% Submittal	12/1/09
Bid Submittal	01/08/10
BID SET DOCUMENTS w/VA Revisions	01/20/10
RECORD DOCUMENTS	09/28/12

CONSULTANTS:

H HADDAD ENGINEERING, INC.
2955 HARTLEY ROAD, SUITE 205 JACKSONVILLE, FL. 32257
TELEPHONE: (904) 262-5086 FAX: (904) 262-7139
CERTIFICATE OF AUTHORIZATION NO. 4000

ARCHITECT/ENGINEERS:

ttv
ttv architects, inc.
15 EAST FORESTHILL
JACKSONVILLE, FLORIDA 32202
T 904.798.0333
F 904.798.0333
WWW.TTVARCHITECTS.COM
FL LICENSE #000099

SUZANNE LEVESEUR P.E.
LICENSE NO. 38120

09-28-12 RECORD DOCUMENTS

Drawing Title
**SECOND FLOOR ROOF
PLAN - HVAC**

Approved Project Director

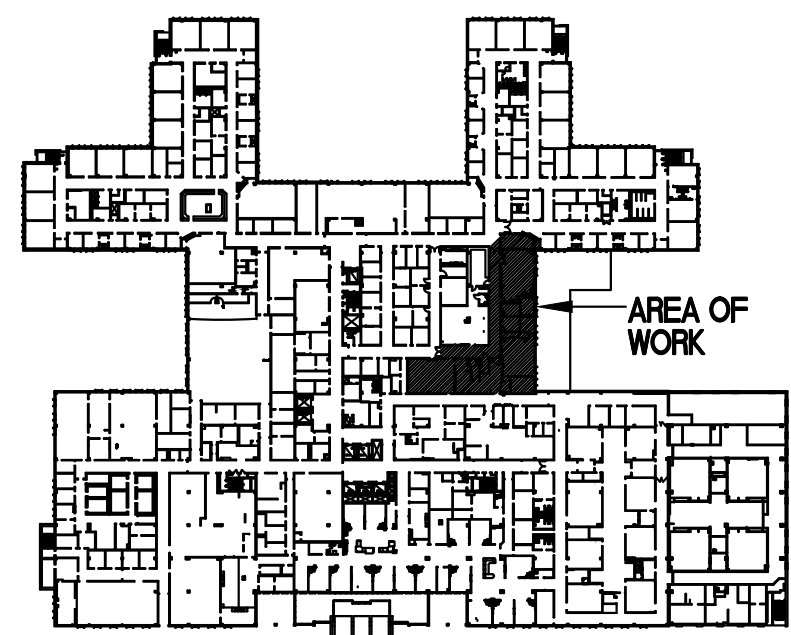
Project Title
**ELECTROPHYSIOLOGY (EP) LAB
SITE PREP PROJECT**

Location
JAMES A. HALEY VETERANS' HOSPITAL
Date 09/28/2012
Checked SL
Drawn JB

Project Number
673-09-102
Building Number
1
Drawing Number
MH105
Dwg. 5 of 5

Office of
Construction
and Facilities
Management

Department of
Veterans Affairs

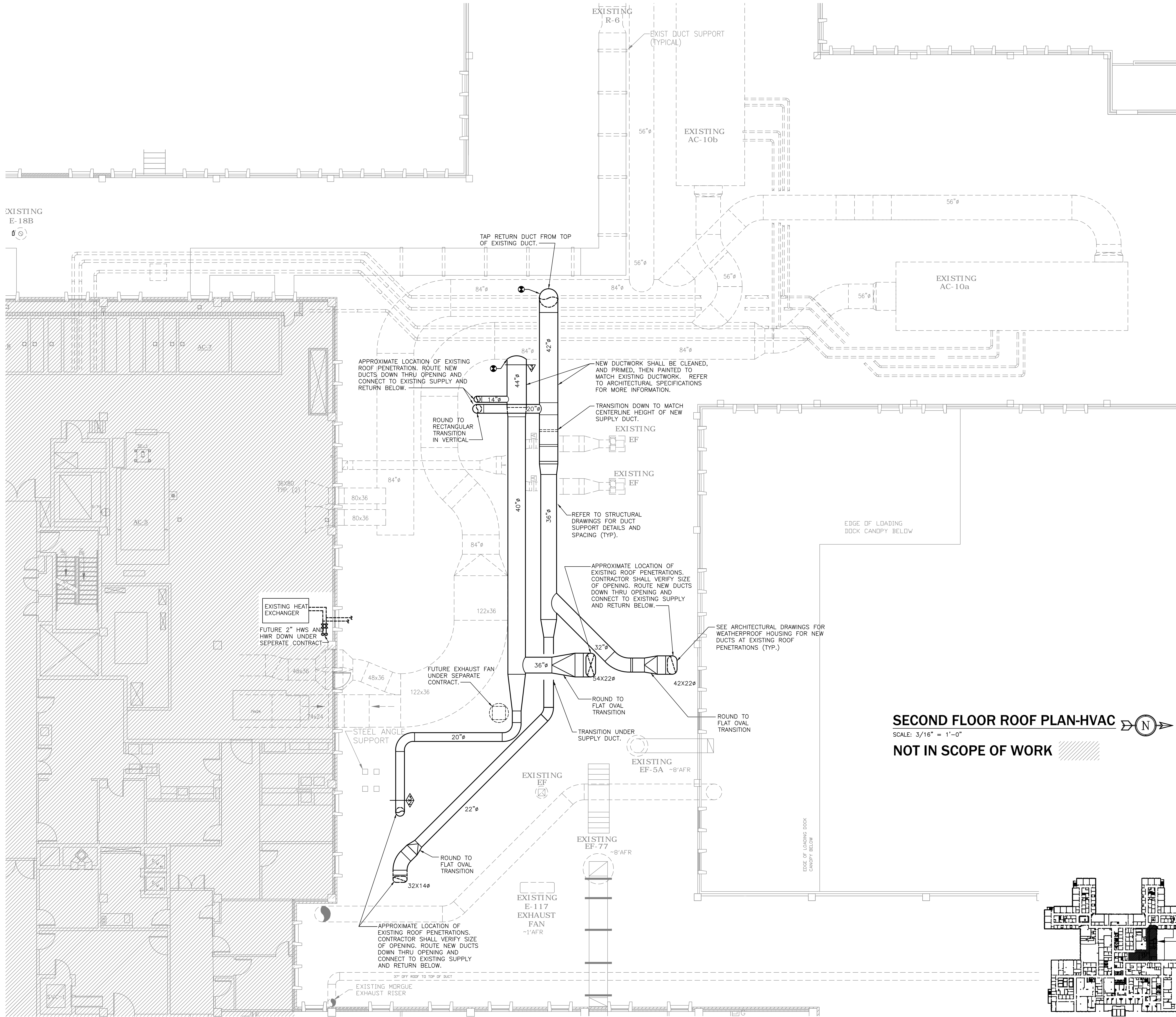


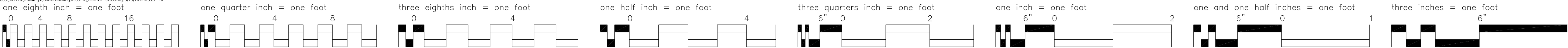
KEY PLAN

SECOND FLOOR ROOF PLAN-HVAC

SCALE: 3/16" = 1'-0"

NOT IN SCOPE OF WORK






Record Documents

09.28.2012

This record drawing has been prepared, in part, based upon information furnished by others. While this information is believed to be reliable, the Architect assumes no responsibility for the accuracy of this record drawing or for any errors or omissions that may have been incorporated into it as a result of incorrect information provided to the Architect. Those relying on this record document are advised to obtain independent verification of its accuracy.


REVISION	DATE
ISS SUBMITTED	09/04/09
65% SUBMITTED	01/14/09
95% SUBMITTED	11/13/09
100% SUBMITTED	12/11/09
BID SUBMITTED	01/08/10
BID SET DOCUMENTS w/VA Remarks	01/20/10
RECORD DOCUMENTS	09/28/12

CONSULTANTS:



AES
Architectural Engineering Services
Suite 201
10000 Lee Highway
Ft. Lee, VA 22043
Phone: 804.443.3333
Fax: 804.443.3333
E: AES@AESVA.COM
F: 804.443.3333

ARCHITECT/ENGINEERS:



HVA
HVA architects, inc.
4000 WOODLAWN BLVD., SUITE 200
FARMERSBURGH, VA 22029
F: 804.443.3333
F: 804.443.3333

09-28-12 RECORD DOCUMENTS

Drawing Title

PARTIAL SECOND FLOOR ROOF PLAN

Project Title

ELECTROPHYSIOLOGY (EP) LAB
SITE PREP PROJECT

Project Number

673-09-102

Building Number

1

Drawing Number

S103

Dwg. of 10

Location

JAMES A. HALEY VETERANS' HOSPITAL

Date

09/28/2012

Checked

JJK

Drawn

JSM

Office of Construction and Facilities Management

PARTIAL SECOND FLOOR ROOF PLAN

SCALE: 1/8"=1'-0"

NOTES:

1. COORDINATE DUCTS, SIZES AND LOCATIONS WITH MECHANICAL DRAWINGS.

2. COORDINATE SUPPORT FRAME LOCATIONS WITH EXISTING UTILITIES AND EQUIPMENT ON ROOF.

3. LOCATE DUCT SUPPORT FRAMES AS SHOWN ON PLAN. SHIFT FRAMES AS REQUIRED TO AVOID EXISTING ROOF EQUIPMENT. NOTE: ALL FRAMES ARE TO BE INSTALLED PRIOR TO INSTALLING FRAMES FOR REVIEW BY ENGINEER.

