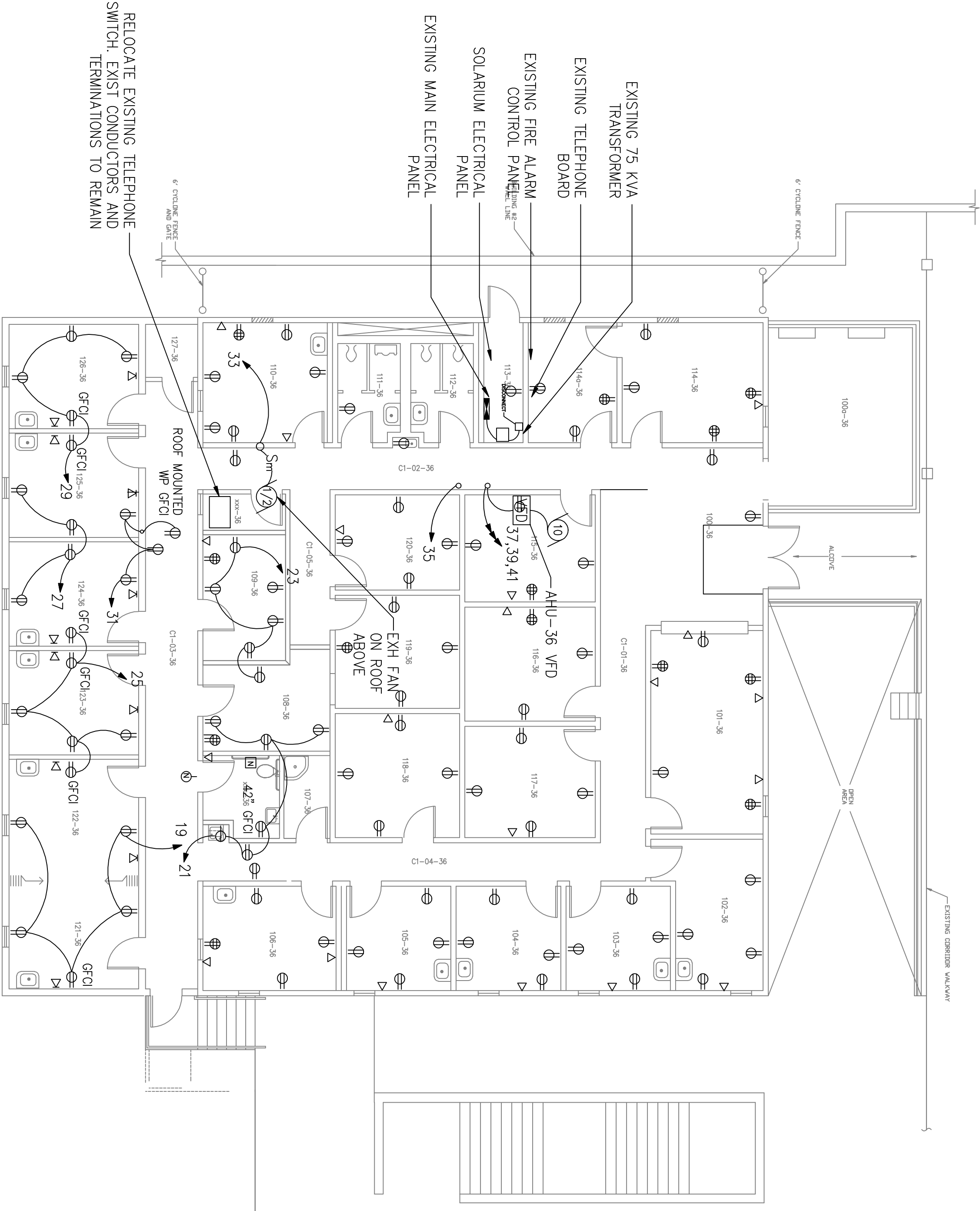



Revisions	Date



Drawing Title POWER & SIGNAL FIRST FLOOR	
Project Title ELECTRICAL	
Approved: Project Section Chief	
Approved: Service Chief	
Approved: Facility Director	
Location: JAMES A. HALEY VETERANS' HOSPITAL 13000 BRUCE B. DOWNS BLVD. TAMPA, FLORIDA 33612	
Drawn MMK	Date
Checked	Project No.
Building Number 36	DRAWING NO. 36-E
File Number	Des. of 36-E

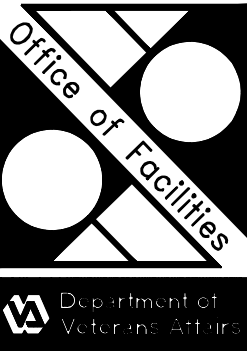


Department of
 Veterans Affairs

Revisions	Date



Drawing Title	
LIGHTING FIRST FLOOR	
Project Title	
ELECTRICAL	
Approved: Project Section Chief	
Approved: Service Chief	
Approved: Facility Director	
Location: JAMES A. HALEY VETERANS' HOSPITAL 13000 BRUCE B. DOWNS BLVD. JAXVA, FLORIDA 32812	
Drawn	Date
MWK	
Checked	Project No.
Building Number	DRAWING NO.
36	36-E
File Number	Des. of



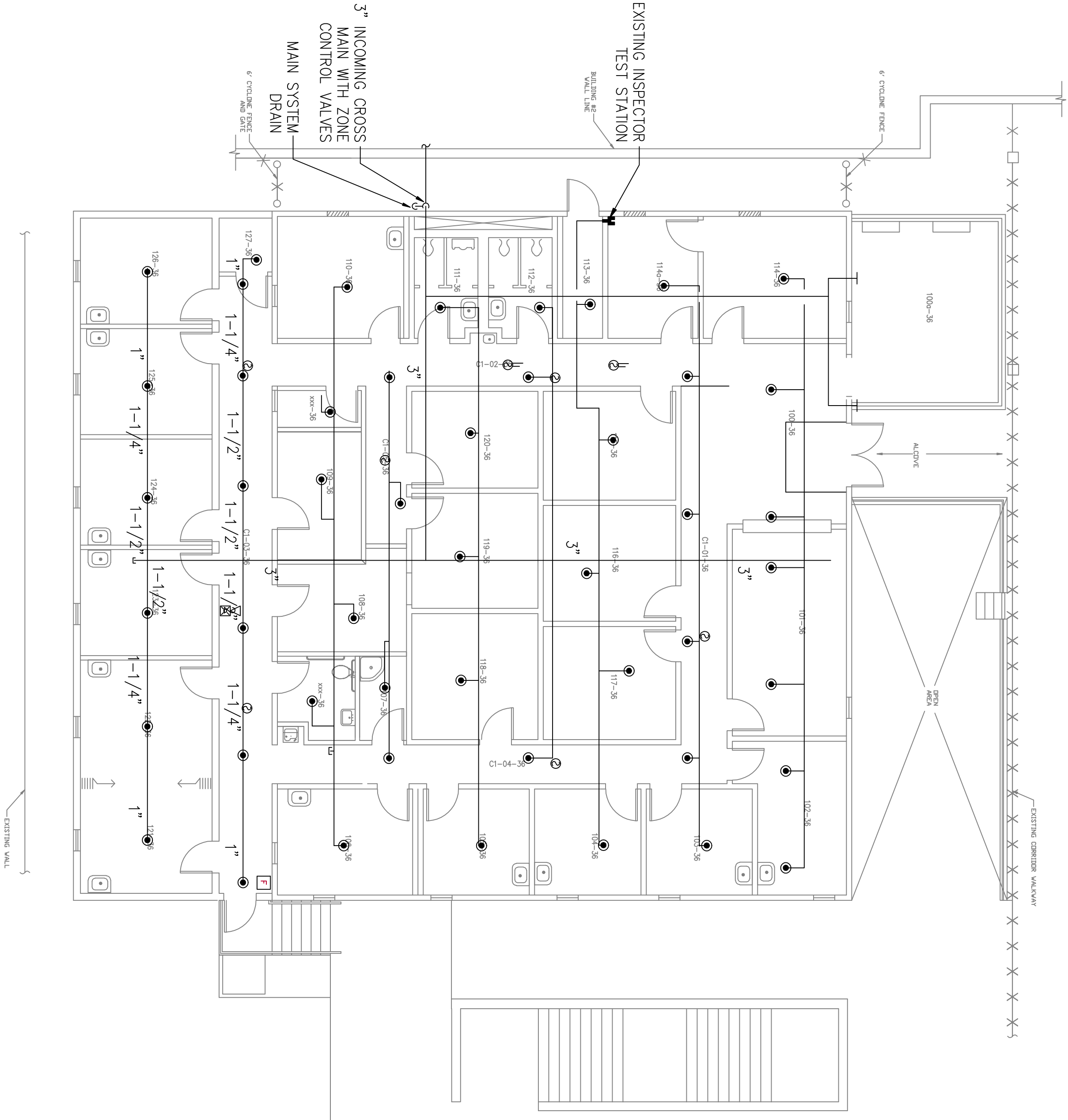
Office of Facilities

Department of Veterans Affairs

Revisions	Date

LEGEND

- 2 HR FIRE RATED PARTITION
- 1 HR FIRE RATED PARTITION
- SMOKE BARRIER PARTITION
- SPRINKLER HEAD
- SPRINKLER HEAD (UPTURNED)
- EXIT SIGN (DIRECTIONAL)
- EXIT SIGN (WALL MOUNTED)
- SMOKE DETECTOR
- DUCT SMOKE DETECTOR
- HEAT DETECTOR



Drawing Title
FIRE WALLS &
SPRINKLER SYSTEM
FIRST FLOOR

Project Title

FIRE PROTECTION

Approved: Project Section Chief

Approved: Service Chief

Approved: Facility Director

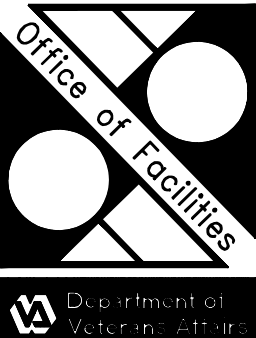
Location: JAMES A. HALEY VETERANS' HOSPITAL
13000 BRUCE B. DOWNES BLVD.
TAMPA, FLORIDA 33612

Drawn: MMK Date: 03/22/04

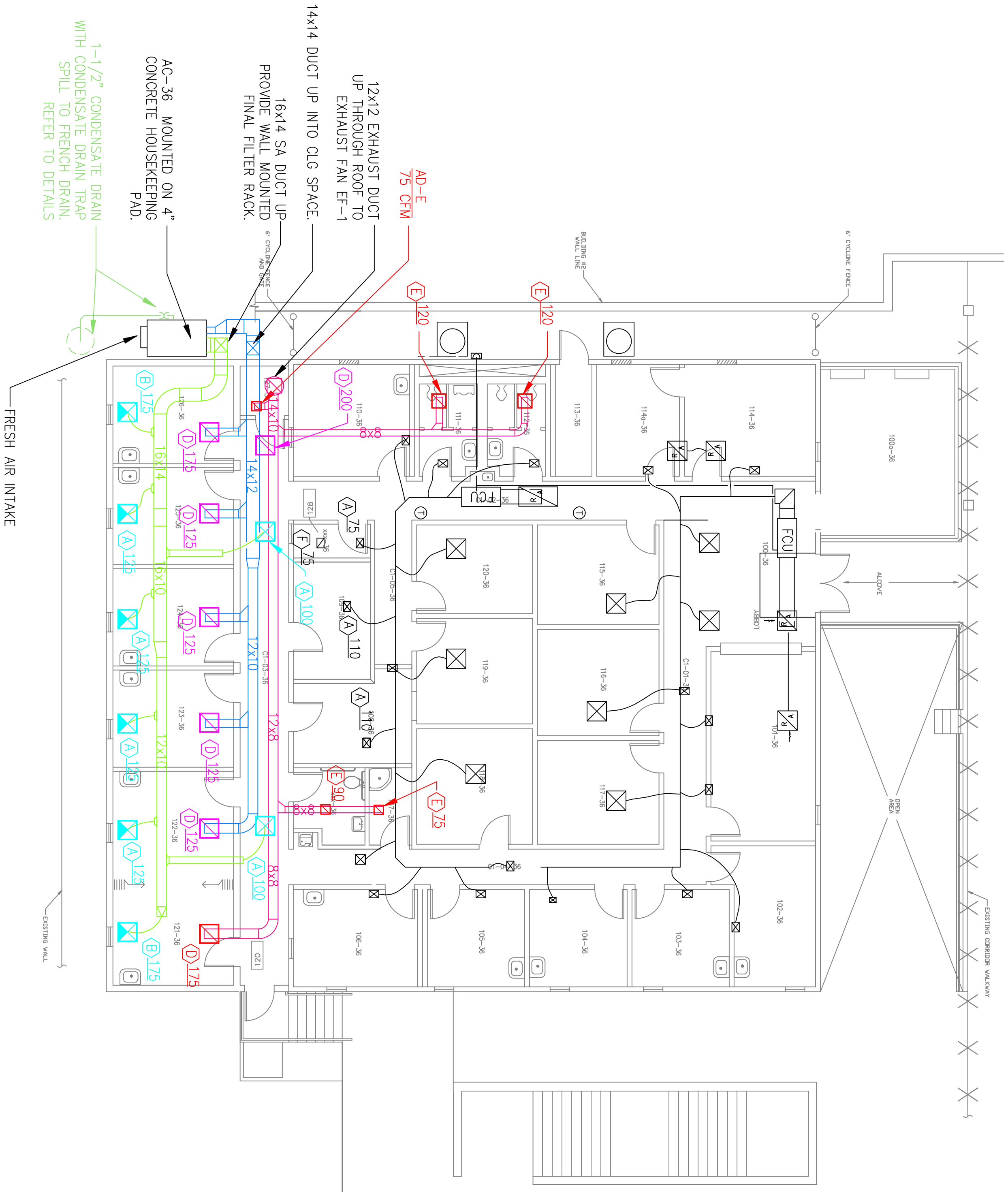
Checked: Project No.

Building Number: 36 DRAWING NO.: 36-F101

File Number: 36-F101



Revisions	Date



Drawing Title	
FIRST FLOOR	
Project Title	
HVAC	
Approved: Project Section Chief	
Approved: Service Chief	
Approved: Facility Director	
Location: JAMES A. HALEY VETERANS' HOSPITAL 13000 BRUCE B. DOWNS BLVD. JANESVILLE, FLORIDA 33812	
Drawn	Date
MWK	8/23/02
Checked	Project No.
Building Number	DRAWING NO.
36	36-MH10
File Number	Des. of

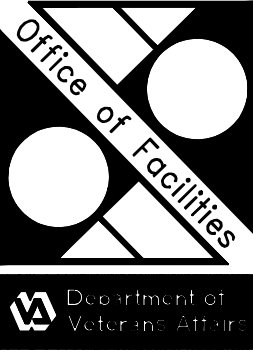


Revisions	Date



EXISTING WALL

Drawing Title	
FIRST FLOOR	
Project Title	
PLUMBING	
Approved: Project Section Chief	
Approved: Service Chief	
Approved: Facility Director	
Location: JAMES A. HALEY VETERANS' HOSPITAL 13000 BRUCE B. DOWNS BLVD. JANESVILLE, FLORIDA 33812	
Drawn	Date
MWK	
Checked	Project No.
Building Number	DRAWING NO.
36	36-PL101
File Number	Page of



Department of Veterans Affairs