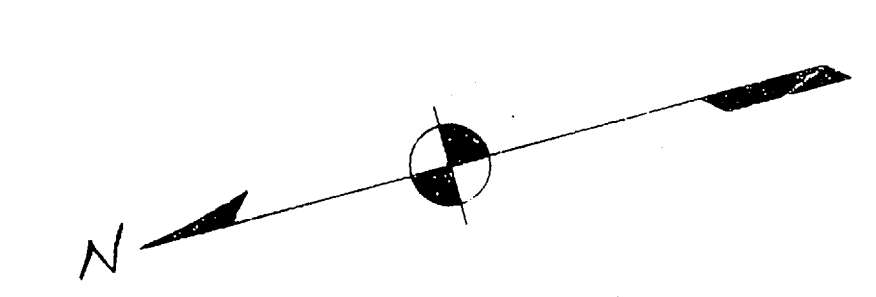
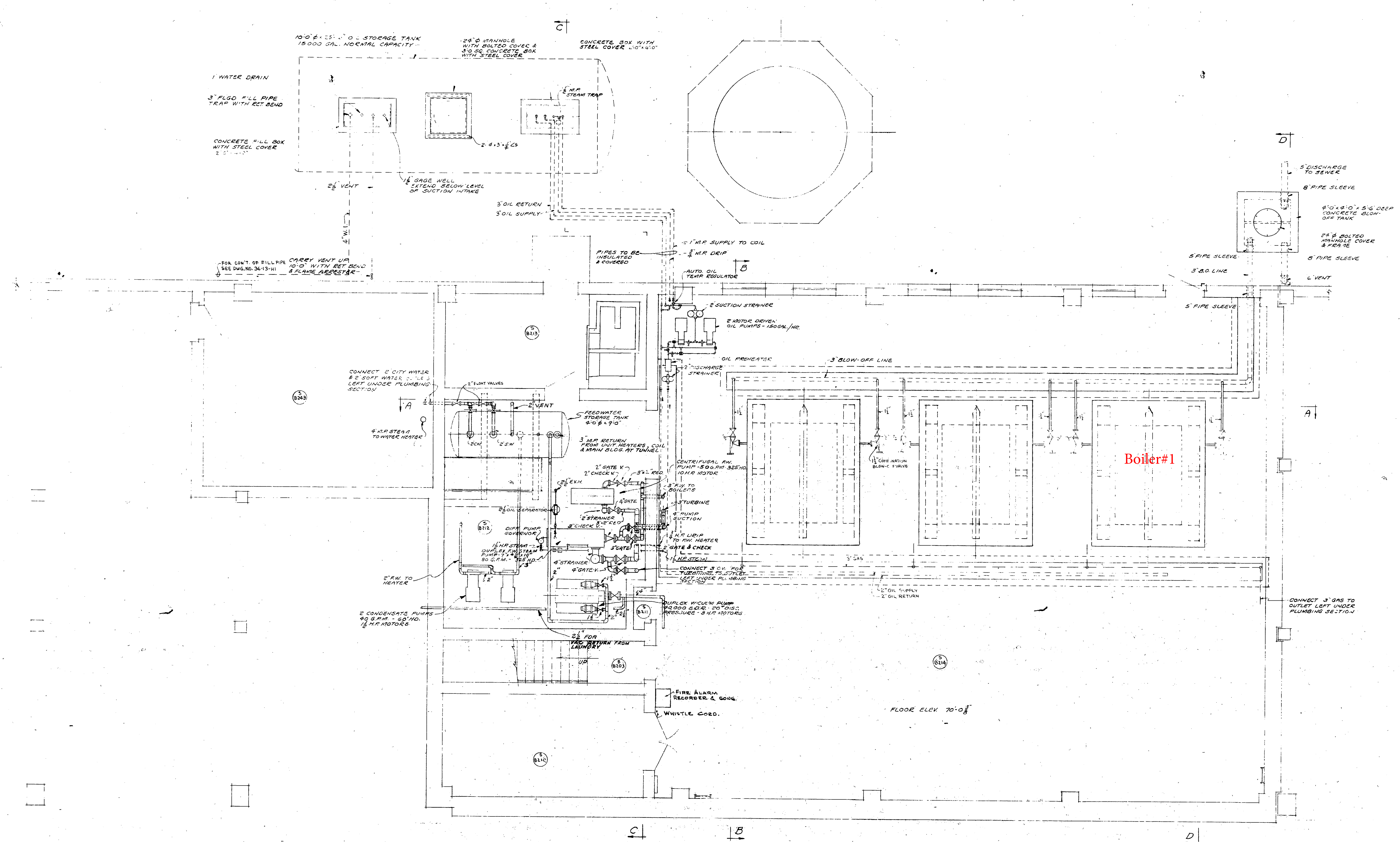


ENG FILE CORP. IRVING CO.
36-13-H-2
Plan Of Boiler Room EL-70ft-38in.



4 8 12 16 20 24 28 32 36 40 44 48 52 56 60 64 68 72 76 80
SCALE IN FEET

4		REVISED	NO. CONSTRUCTED	SPB
3		4-1-1941	ADDED WHISTLE	WCH
2		4-1-1940	ADDED FIRE ALARM RECORDER & BONG RM. B214	WCH
1		4-1-1938	REVISED PER AMENDMENT #2	WCH
REVISION	DATE	DESCRIPTION		BY
TUCKER & SILLING ARCHITECTS CHARLESTON, WEST VIRGINIA				
WAR DEPARTMENT CORPS OF ENGINEERS HUNTINGTON DISTRICT HUNTINGTON, W. VA.				
VETERANS ADMINISTRATION HOSPITAL CLARKSBURG, WEST VIRGINIA BECKLEY, WEST VIRGINIA 200 BED G.M.				
LAUNDRY - BOILER HOUSE - GARAGE PLAN OF BOILER ROOM EL. 70-03				
DRAWN BY: H.H.K.		DATE: OCT. 1947		
CHECKED BY: WCH		APPROVED: <i>[Signature]</i> COL. G.E. DISTRICT ENGINEER		
SUBMITTED: <i>[Signature]</i>		V.A. PROJECT No. 2877 V.A. Project No. 2876		
APPROVED: <i>[Signature]</i> HEAD ENGINEER		SCALE: 1" = 4'-0" SHEET 1 OF 2		