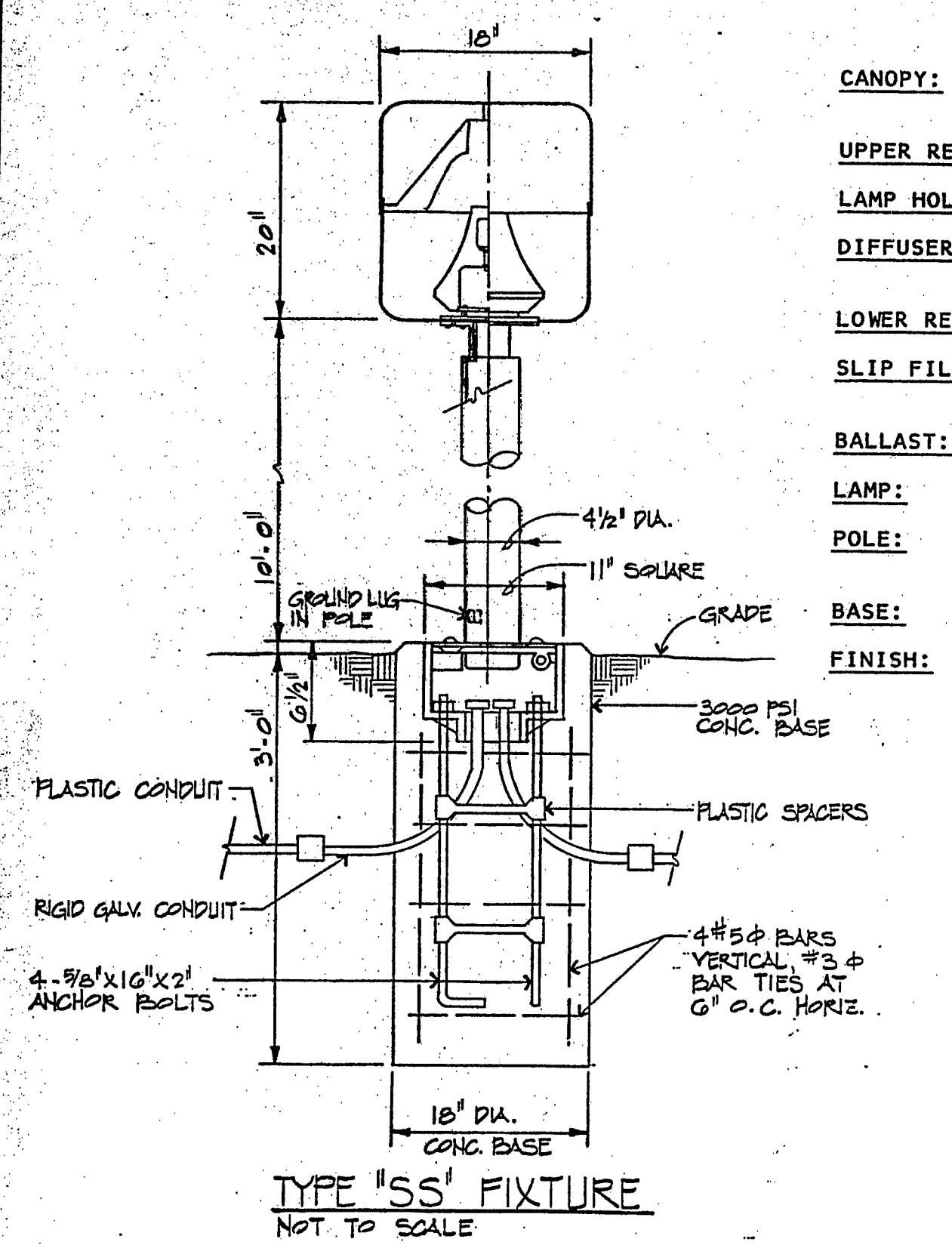
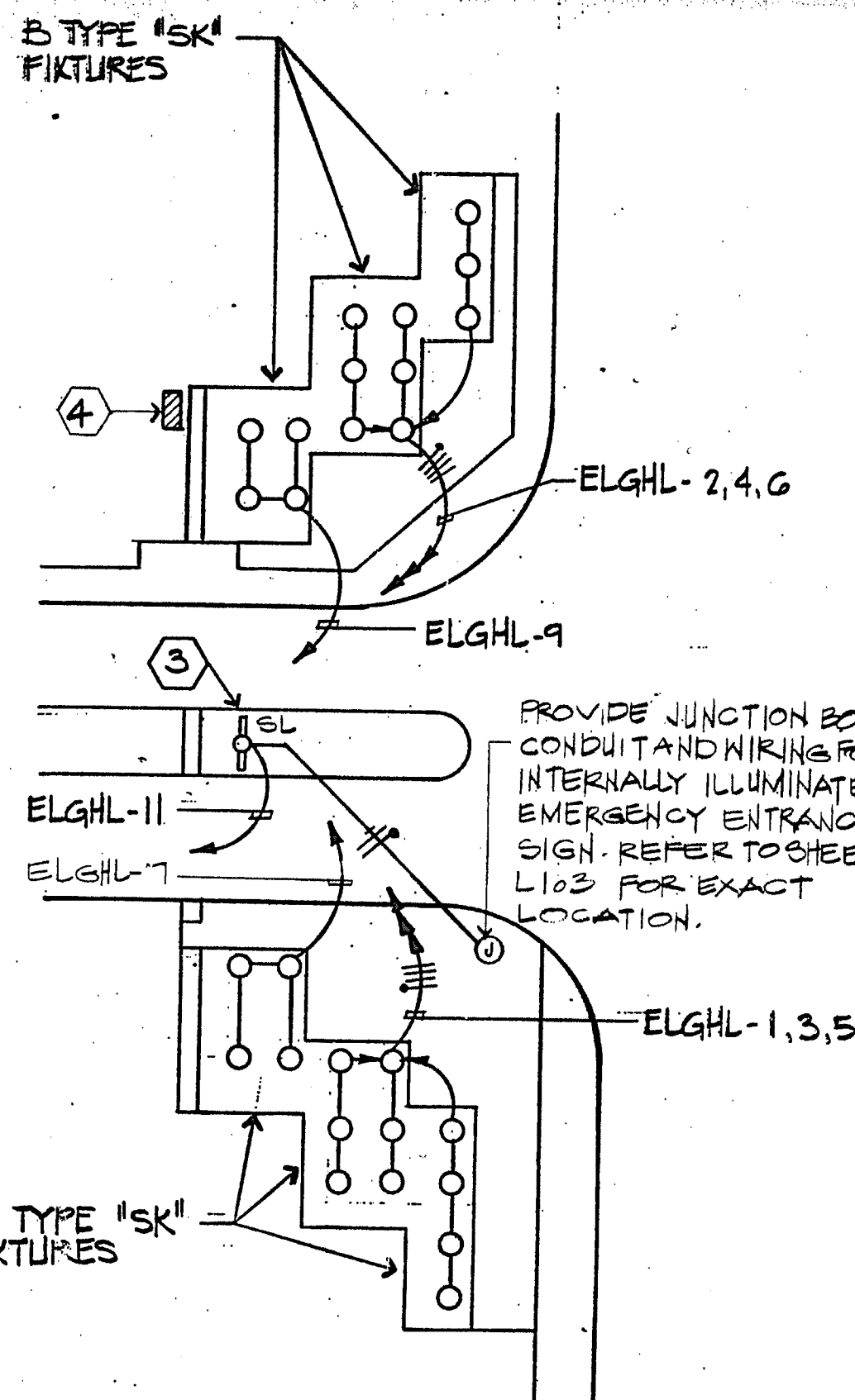


three inches = one foot
one and one-half inches = one foot
one inch = one foot
three-quarters inch = one foot
one-half inch = one foot
three-eighths inch = one foot
one-quarter inch = one foot
one-eighth inch = one foot



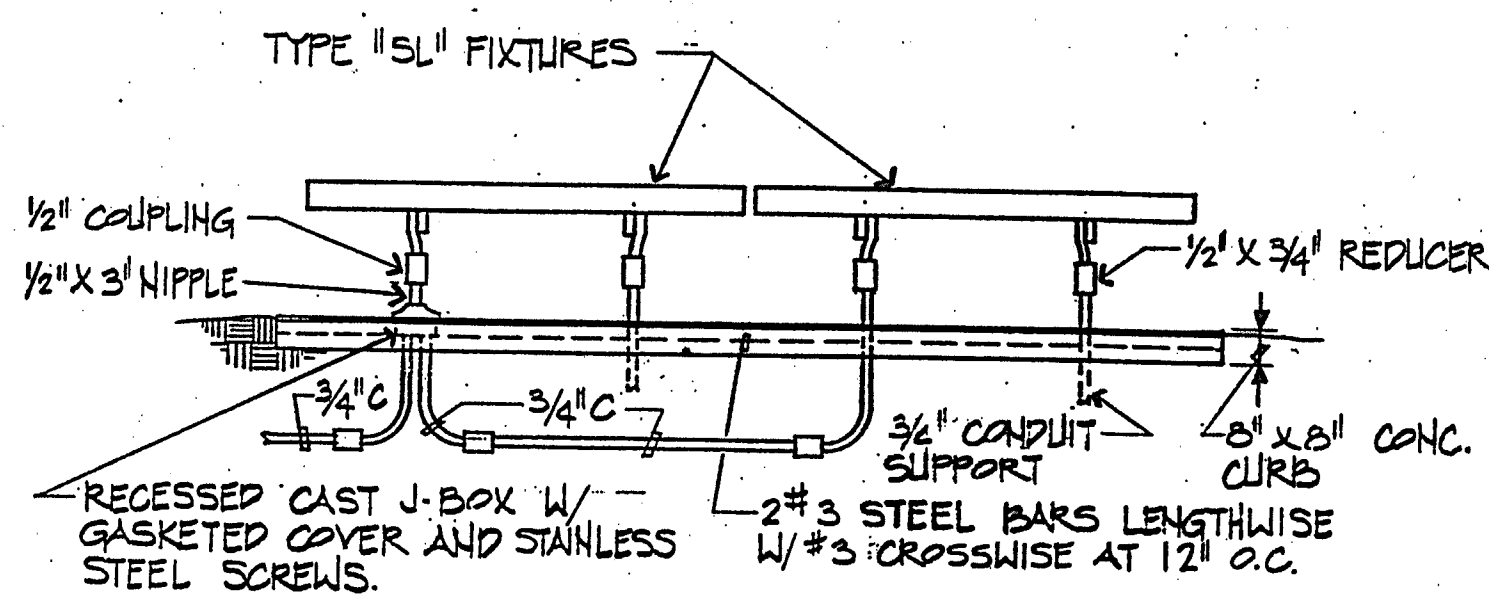
- CANOPY:** SPUN ALUMINUM (REMOVABLE FOR LAMP ACCESS)
- UPPER REFLECTOR:** SPUN ALUMINUM
- LAMP HOLDER:** HEAVY DUTY PORCELAIN
- DIFFUSER:** ONE PIECE MOLDED CLEAR (POLYCARBONATE PLASTIC)
- LOWER REFLECTOR:** POLISHED SPUN ALUMINUM
- SLIP FILTER:** CAST ALUMINUM FOR 3" O.D. (TENON OR POST TOP?)
- BALLAST:** 480 VOLT, HIGH POWER FACTOR
- LAMP:** 175 WATT METAL HALIDE CLEAR LAMP
- POLE:** ROUND STRAIGHT ALUMINUM 4-1/2" DIA. (10'-0" HIGH WITH 3" O.D. TENON)
- BASE:** RECESSED, HINGED, CAST ALUMINUM
- FINISH:** POLYVINYL FLUORIDE - COLOR AS SPECIFIED IN COLOR FINISH SECTION OF SPECIFICATIONS



PROVIDE JUNCTION BOX CONDUIT AND WIRING FOR INTERNALLY ILLUMINATED EMERGENCY ENTRANCE SIGN. REFER TO SHEET L103 FOR EXACT LOCATION.

HOLCOMB BLVD ENTRANCE LIGHTING

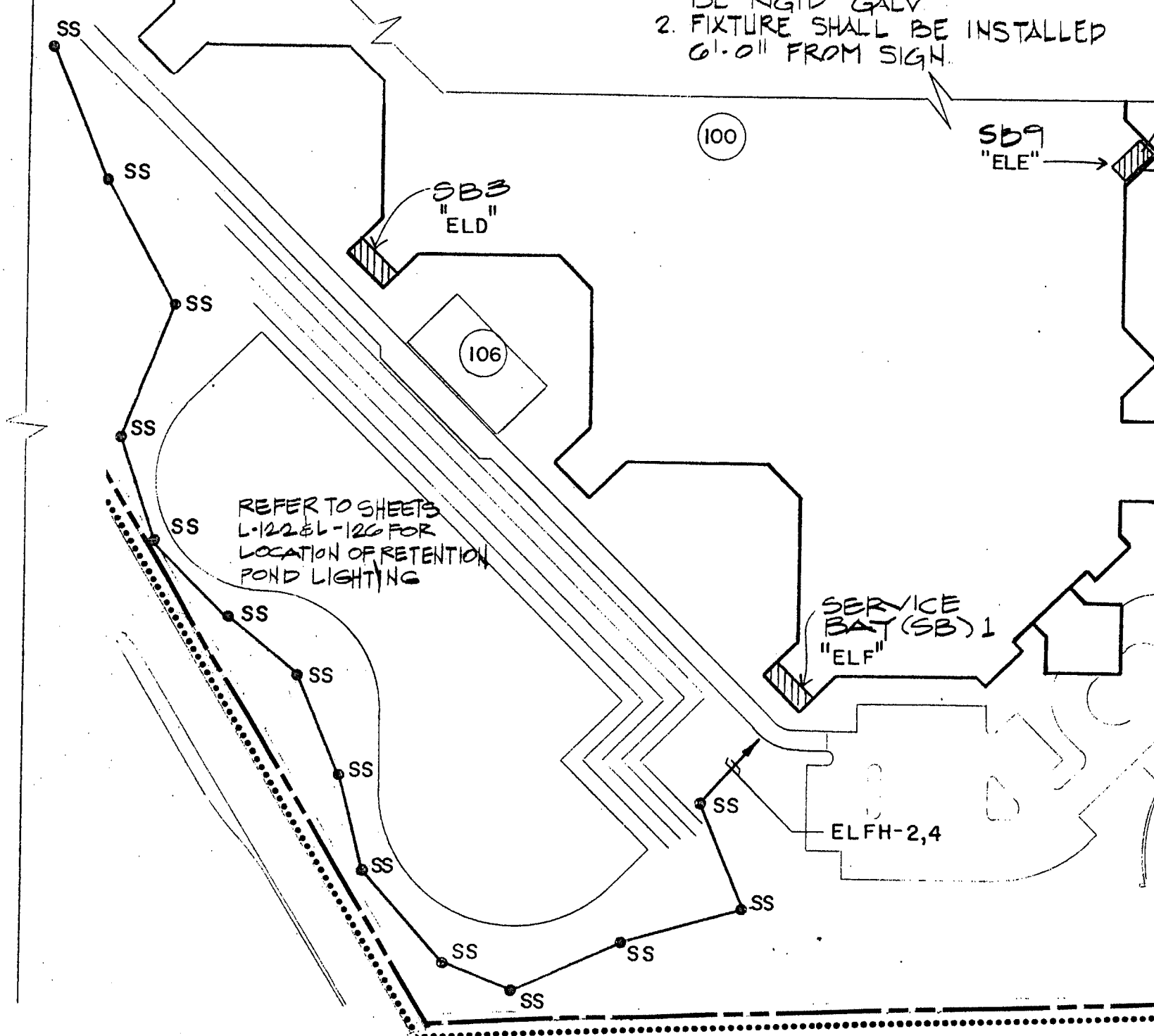
SCALE: 1" = 30'-0"



TYPE 'SL' FIXTURE MOUNTING

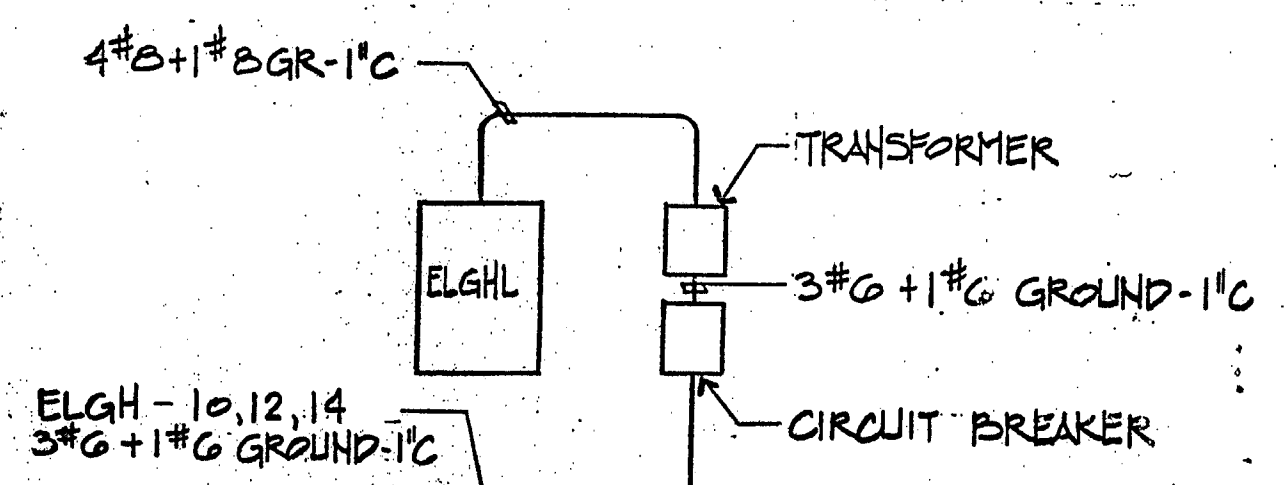
NOT TO SCALE

- NOTES: 1. ALL SUPPORTING CONDUIT SHALL BE RIGID GALV.
2. FIXTURE SHALL BE INSTALLED 6'-0" FROM SIGN



WEATHERPROOF HOUSING 'C' DETAIL

NOT TO SCALE



WEATHERPROOF HOUSING 'C' RISER

NOT TO SCALE

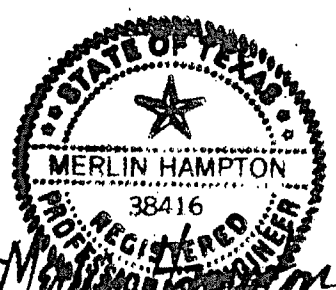
GENERAL EXTERIOR LIGHTING NOTES

- THE EXTERIOR LIGHTING FIXTURE LOCATIONS, CIRCUITRY, SCHEDULE AND DETAILS ARE SHOWN ON THIS SHEET AND 206-E1
 - ALL LIGHTING FIXTURES EXCEPT TYPE SS SHALL BE FURNISHED BY GOVERNMENT AND INSTALLED BY THE PHASE III CONTRACTOR.
 - LIGHTING FIXTURES SHALL BE CONNECTED TO AND CONTROLLED FROM THE EXISTING EXTERIOR LIGHTING CENTERS NOTED. THESE CONTROL CENTERS ARE COMPOSED OF A PANELBOARD, OR PANELBOARDS, EACH WITH A MAIN CONTACTOR. THE CONTROL OF THESE CONTACTORS IS PHOTOCELL INITIATED FROM THE ENGINEERING CONTROL CENTER IN BUILDING 104, WITH SELECTED PROGRAM BYPASS.
 - EXTERIOR SITE LIGHTING CONTROL CENTERS ARE AS FOLLOWS:
- | NO. | LOCATION | PANELS |
|-----|----------------------------|------------|
| ELD | BUILDING 100 SERVICE BAY 3 | ELDL |
| ELE | BUILDING 100 SERVICE BAY 9 | ELEH, EEL |
| ELF | BUILDING 100 SERVICE BAY 1 | ELFH, ELFL |
| ELG | BUILDING 211 | ELGH |

EXTERIOR LIGHTING FIXTURE SCHEDULE											
SEE SECTION 16530 FOR DESCRIPTIONS OF FIXTURES											
TYPE	MOUNTING	LAMPS	VOLTS	REMARKS	TYPE	MOUNTING	LAMPS	VOLTS	REMARKS	TYPE	MOUNTING
SA	POLE MOUNTED ON 30 FOOT HIGH AL. POLE.	1-250 WATT H.P.S.	480	ROUND AREA LIGHTING FIXTURE, I.E.S. TYPE II DISTRIBUTION	SE	POLE MOUNTED ON 30 FOOT HIGH AL. POLE	2-250 WATT H.P.S.	480	TWO ROUND AREA LIGHTING FIXTURES EACH WITH TYPE V SQUARE DISTRIBUTION.	SL	GROUND MOUNTED
SC	POLE MOUNTED ON 30 FOOT HIGH AL. POLE	1-250 WATT H.P.S.	480	ROUND AREA LIGHTING FIXTURE, I.E.S. TYPE III DISTRIBUTION	SF	POLE MOUNTED ON 30 FOOT HIGH AL. POLE	2-250 WATT H.P.S.	480	TWO ROUND AREA LIGHTING FIXTURES ONE WITH I.E.S. TYPE II DISTRIBUTION AND THE OTHER WITH I.E.S. TYPE III DISTRIBUTION. TYPE III DISTRIBUTION SHALL BE ON STREET SIDE OF POLE.	SS	POST TOP MOUNTED ON 10'-0" HIGH AL. POLE
SD	POLE MOUNTED ON 15 FOOT HIGH AL. POLE	1-250 WATT H.P.S.	480	ROUND AREA LIGHTING FIXTURE, I.E.S. TYPE III DISTRIBUTION	SK	RECESSED GROUND MOUNTED	300 WATT R-40 FLOOD	120	INCANDESCENT TREE LIGHTING FIXTURE		

3D/INTERNATIONAL AND STONE, MARRACCINI AND PATTERSON
3D/I • SMP A JOINT VENTURE HOUSTON, TEXAS
1900 WEST LOOP SOUTH, SUITE 200 HOUSTON, TEXAS 77027 TELEPHONE (713) 871-7000

STRUCTURAL AND CIVIL : WALTER P. MOORE AND ASSOCIATES, INCORPORATED
MECHANICAL AND ELECTRICAL : YANDELL & HILLER, INC. AND 3D/INTERNATIONAL



PHASE III

Drawing Title
SITE LIGHTING

Approved Project Director
[Signature]

Project Title
REPLACEMENT / MODERNIZATION MEDICAL CENTER

Building Number
SITE

Date
2 JAN 1987

Project No.
580-040

Drawing No.
E-3

Veterans Administration