

TECHNOLOGY SYMBOLS AND ABBREVIATIONS

NOTE: SYMBOLS AND ABBREVIATIONS INDICATED HERE AND NOT USED IN THE CONTRACT DOCUMENTS DO NOT APPLY TO THIS PROJECT. ADDITIONAL SYMBOLS MAY BE INDICATED IN THE CONTRACT DOCUMENTS.

TECHNOLOGY SERVICES

TELECOMMUNICATINOS DEVICES

- # WORKSTATION OUTLETS  
CONFIGURATION: AS INDICATED BY NO.  
MOUNTING LOCATION: SURFACE WALL  
MOUNTING HEIGHT: 1'-6" AFF
- # WORKSTATION OUTLETS - CEILING MOUNTED  
CONFIGURATION: AS INDICATED BY NO.  
MOUNTING LOCATION: SURFACE CEILING / STRUCTURE  
MOUNTING HEIGHT: FIELD VERIFY
- CONFIGURATION:  
# = CONFIGURATION TYPE  
\* = OUTLET WITHOUT A CONFIGURATION TYPE = ONE (1) CATEGORY 6 CABLE
- 2 = TWO (2) CATEGORY 6 CABLES, EACH TERMINATED ON CATEGORY 6 8-PIN 8-CONDUCTOR RJ-45 TYPE JACKS
- 3 = THREE (3) CATEGORY 6 CABLES, EACH TERMINATED ON CATEGORY 6 8-PIN 8-CONDUCTOR RJ-45 TYPE JACKS
- 4 = FOUR (4) CATEGORY 6 CABLES, EACH TERMINATED ON CATEGORY 6 8-PIN 8-CONDUCTOR RJ-45 TYPE JACKS
- WAP = TWO (2) CATEGORY 6 CABLES, EACH TERMINATED ON CATEGORY 6 8-PIN 8-CONDUCTOR RJ-45 TYPE JACKS, WITH 10 FEET OF SLACK TERMINATED ABOVE CEILING FOR WIRELESS ACCESS POINT CONNECTION.
- STAR = TWO (2) CATEGORY 6 CABLES, EACH TERMINATED ON CATEGORY 6 8-PIN 8-CONDUCTOR RJ-45 TYPE JACKS, WITH 10 FEET OF SLACK TERMINATED ABOVE CEILING FOR STAR SYSTEM CONNECTION.

CLOCKS

- 4" DISPLAY DIGITAL CLOCK  
MOUNTING LOCATION: WALL SURFACE  
MOUNTING HEIGHT: 86" AFF TO BOTTOM OR AS NOTED
- 4" DISPLAY DOUBLE FACED DIGITAL CLOCK  
D MOUNTING LOCATION: WALL SURFACE  
MOUNTING HEIGHT: 86" AFF TO BOTTOM OR AS NOTED
- MASTER CLOCK  
M MOUNTING LOCATION: AS NOTED  
MOUNTING HEIGHT: AS NOTED
- NIST RECEIVER INTERFACE  
R MOUNTING LOCATION: AS NOTED  
MOUNTING HEIGHT: AS NOTED
- SINGLE FACE ANALOG CLOCK  
MOUNTING LOCATION: WALL  
MOUNTING HEIGHT: 86" AFF TO BOTTOM OR AS NOTED
- DOUBLE FACE ANALOG CLOCK  
D MOUNTING LOCATION: WALL  
MOUNTING HEIGHT: 86" AFF TO BOTTOM OR AS NOTED

NURSE CALL

- NURSE CALL SYSTEM DEVICE  
CONFIGURATION: AS INDICATED BY LETTERS  
MOUNTING LOCATION: FLUSH CEILING (UON)  
MOUNTING HEIGHT: FFC
- NURSE CALL SYSTEM DEVICE  
CONFIGURATION: AS INDICATED BY LETTERS  
MOUNTING LOCATION: WALL  
MOUNTING HEIGHT: REFER TO ARCHITECTURAL DOCUMENTS
- CONFIGURATION:  
XX = CONFIGURATION TYPE
- AJ = DUAL ALARM JACK  
BI = BED INTERFACE  
CB = CODE BLUE  
CL = CORRIDOR LIGHT  
DS = DUTY STATION  
LS = LAVATORY STATION  
LSA = LAVATORY STATION W/ AUDIO  
MCL = MINI CORRIDOR LIGHT  
MS = MASTER STATION  
NIU = NETWORK INTERFACE UNIT  
PB = PUSHBUTTON CALL CORD  
PS = PATIENT STATION  
RS = REMOTE PILLOW SPEAKER  
SA = STAFF ASSIST  
SACV = STAFF ASSIST/CODE  
SB = STAFF STATION  
ST = STAFF TERMINAL  
ZL = ZONE LIGHT

REFERENCE SYMBOLS

- REFER SHT # GENERAL REFERENCE DESIGNATES SHEET NUMBER
- NAME # EQUIPMENT NAME AND NUMBER
- DET # SHT # DETAIL REFERENCE TOP DESIGNATES DETAIL NUMBER BOTTOM DESIGNATES SHEET NUMBER
- # LAB EQUIPMENT NUMBER
- # KEYNOTE NUMBER
- # REVISION NUMBER
- # CONSTRUCTION BULLETIN NUMBER
- ELEVATION SYMBOL
- NEW CONNECTION TO EXISTING

ABBREVIATIONS

10/100BaseTX	ETHERNET/FAST ETHERNET	JB	JUNCTION BOX
1000BaseSX	GIGABIT ETHERNET (SHORT WAVELENGTH)	KO	KNOCK-OUT
1000BaseLX	GIGABIT ETHERNET (LONG WAVELENGTH)	KV	KILOVOLT
AC	ABOVE CEILING/ALTERNATING CURRENT	KVA	KILOVOLT-AMPERES
ACS	ACCESS CONTROL PANEL	KW	KILOWATTS
ACT	ACOUSTICAL CEILING TILE	KWH	KILOWATT HOURS
ADO	AUTOMATIC DOOR OPENER	LAN	LOCAL AREA NETWORK
AFF	ABOVE FINISHED FLOOR	LV	LOW VOLTAGE
ALT	ALTERNATE	MATV	MASTER ANTENNA TELEVISION
ARCH	ARCHITECTURAL	MC	MECHANICAL CONTRACTOR
ASC	ABOVE SUSPENDED CEILING	MDF	MAIN DISTRIBUTION FACILITY
AUTO	AUTOMATIC	MER	MAIN EQUIPMENT ROOM
AWG	AMERICAN WIRE GAUGE	MH	MAINTENANCE HOLE
BAS	BUILDING AUTOMATION SYSTEM	MM	MULTIMODE
BOS	BUILDING CONTROL SYSTEM	MP	MUSIC & PAGE
BEF	BUILDING ENTRANCE FACILITY	MTD	MOUNTED
BFC	BELOW FINISH CEILING	MTG	MOUNTING
BFL	BELOW FLOOR LEVEL	MTG HGT	MOUNTING HEIGHT
BLDG	BUILDING	NA	NOT APPLICABLE
BMS	BUILDING MANAGEMENT SYSTEM	NC	NEW CONNECTION/NORMALLY CLOSED
BRKR	BREAKER	NIC	NOT IN CONTRACT
C	CONDUIT	NO	NORMALLY OPEN
CCTV	CLOSED CIRCUIT TELEVISION	NTS	NOT TO SCALE
CCT	CIRCUIT	OC	ON CENTER
CCT BRK	CIRCUIT BREAKER	OFCI	OWNER FURNISHED CONTRACTOR INSTALLED
CLG	CONTRACTOR	OFOW	OWNER FURNISHED OWNER INSTALLED
CONTR	CONTRACTOR	PB	PULL BOX/PUSH-BUTTON
CORR	CORRIDOR	PBX	PRIVATE BRANCH EXCHANGE
CP	CONSOLIDATION POINT	PC	PLUMBING CONTRACTOR/PHOTOCELL/PERSONAL COMPUTER
CT	CABLE TRAY	PDU	POWER DISTRIBUTION UNIT
DB	DIRECT BURIAL	PF	POWER FACTOR
DC	DIRECT CURRENT	PH	PHASE
DED	DEDICATED	PLBG	PLUMBING
DET	DETAIL	PNL	PANEL
DIA	DIAMETER	PWR	POWER
DN	DOWN	REC	RECESSED
DS	DISCONNECT SWITCH	RECEP	RECEPTACLE
DVR	DIGITAL VIDEO RECORDER	REL	RELOCATE
EC	EMPTY CONDUIT/ELECTRICAL CONTRACTOR	REQD	REQUIRED
EDB	ELECTRIC DUCT BANK	RU	RACK UNIT
EF	ENTRANCE FACILITY	SHT	SHEET
EG	EQUIPMENT GROUND	SIG	SIGNAL
EGS	ENGINE-GENERATOR SET	SIM	SIMILAR
EIDF	EQUIPMENT INTERMEDIATE DISTRIBUTION FACILITY	SIO	STANDARD INFORMATION OUTLET
EJ	EXPANSION JOINT	SM	SINGLEMODE
ELEC	ELECTRIC/ELECTRICAL	SPEC	SPECIFICATION
EMER	EMERGENCY	SS	SAFETY SWITCH
EMI	ELECTROMAGNETIC INTERFERENCE	STA	STATION
EMT	ELECTRICAL METALLIC TUBING	SW	SWITCH
EQUIP	EQUIPMENT	TB	TERMINAL BOX
ER	EQUIPMENT ROOM	TEL	TELEPHONE
ETR	EXISTING TO REMAIN	TFA	TO FLOOR ABOVE
F/FC	FLUSH WITH FINISHED CEILING	TFB	TO FLOOR BELOW
F/FF	FLUSH WITH FINISHED FLOOR	TO	TELECOMMUNICATIONS OUTLET
F/FW	FLUSH WITH FINISHED WALL	TR	TELECOM ROOM
F/A	FIRE ALARM	TS	TAMPER SWITCH/TIME SWITCH
FACP	FIRE ALARM CONTROL PANEL	TV	TELEVISION
FL	AT FLOOR LINE	TVSS	TRANSIENT VOLTAGE SURGE SUPPRESSION
FLEX	FLEXIBLE	TYP	TYPICAL
FLR	FLOOR	UC	UNDER COUNTER
FLUOR	FLUORESCENT	UG	UNDERGROUND
FS	FLOW SWITCH	UON	UNLESS OTHERWISE NOTED
FSS	FUSED SAFETY SWITCH	UPS	UNINTERRUPTABLE POWER SUPPLY
FSCP	FLAME SAFEGUARD CONTROL PANEL	V	VOLTAGE
FVNR	FULL VOLTAGE NON-REVERSING	VaIP	VOICE OVER INTERNET PROTOCOL
GBIC	GIGABIT INTERFACE CONVERTER	W	WIRE
GC	GENERAL CONTRACTOR	W/	WITH
GFCI	GROUND FAULT CIRCUIT INTERRUPTER	WP	WEATHERPROOF
GND	GROUND	WS	WALL SURFACE
GEN	GENERATOR	WT	WATER TIGHT
GPC	GALVANIZED RIGID CONDUIT	X	EXIST
HH	HANDHOLE	XFMR	TRANSFORMER
HT	HEIGHT/HEAT TRACE	XP	EXPLOSION PROOF
HV	HIGH VOLTAGE		
IDF	INTERMEDIATE DISTRIBUTION FACILITY		
IMC	INTERMEDIATE METAL CONDUIT		

HILLIARD ARCHITECTS INC. COPYRIGHT

FINAL BID DOCUMENTS

<div>ADDENDUM 1</div> <div>Revisions:</div> <div>07/01/16</div> <div>Date</div>		<div>CONSULTANTS:</div> <div><div>AEI</div><div>Affiliated Engineers</div></div> <div>Affiliated Engineers W, Inc. 123 Mission Street, 7th Floor San Francisco, California 94105 415.764.3700</div>		<div><div>REGISTERED COMMUNICATIONS DISTRIBUTION DESIGNER</div><div>ANDY RECORD</div><div>COMMERCIAL</div><div>"RCD"</div></div>		<div>ARCHITECT/ENGINEERS:</div> <div><div>ESTABLISHED 1988</div><div>HILLIARD ARCHITECTS</div><div>GOING GREEN</div></div> <div>HILLIARD ARCHITECTS, INC 1330 Broadway, Suite 1111 Oakland, CA 94612 Tel 415 989 6400, Fax 415 989 3056 www.HilliardArchitects.com</div>		<div>Drawing Title</div> <div>TECHNOLOGY SYMBOLS AND ABBREVIATIONS</div> <div>Approved: Project Director</div>		<div>Project Title</div> <div>EXPAND CLINICAL OR AND SURGERY</div> <div>Location 4150 CLEMENT STREET</div> <div>Date 06/30/2016</div> <div>Checked AEI</div> <div>Drawn AEI</div>		<div>Project Number</div> <div>662-618</div> <div>Building Number</div> <div>200 &amp; 203</div> <div>Drawing Number</div> <div>T0.01</div> <div>Dwg. 144 of 148</div>		<div>Office of Construction and Facilities Management</div> <div>Department of Veterans Affairs</div>	
---	--	---	--	--	--	--	--	--	--	---	--	--	--	---	--



4. FOR ALL DEMOLISHED OUTLETS AND SYSTEMS, DISCONNECT AND REMOVE CONDUIT AND CABLING BACK TO POINT OF ORIGIN/POINT OF TERMINATION. LABEL ANY EMPTY PORTS AS SPARE.

4 REMOVE EXISTING TELECOMMUNICATIONS SYSTEMS AND NURSE CALL SYSTEMS AT NURSE STATION DESK. REMOVE STRUCTURED CABLING (CATEGORY UTP) BACK TO LOCAL IDF. SAVE, PROTECT, AND REINSTALL NURSE CALL DEVICES AT NEW DESK LOCATION.



Department of  
Veterans Affairs

$$1/8'' = 1'-0''$$

**HILLIARD ARCHITECTS, INC**  
**1330 Broadway, Suite 1111**  
**Oakland, CA 94612**  
**Tel 415 989 6400, Fax 415 989 3056**  
**[www.HilliardArchitects.com](http://www.HilliardArchitects.com)**



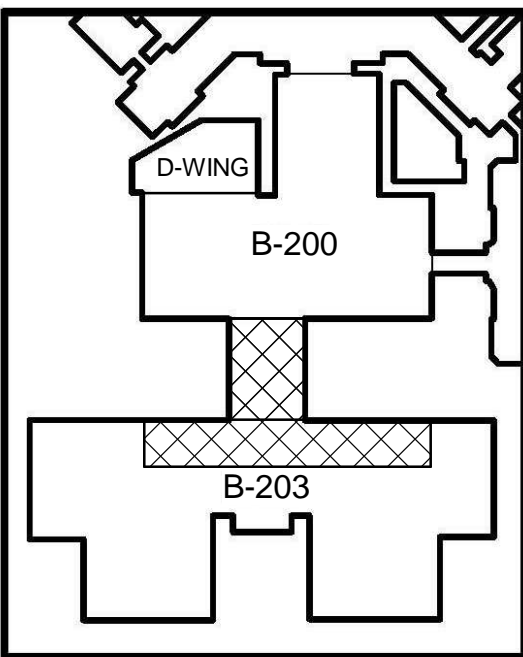


GENERAL NOTES

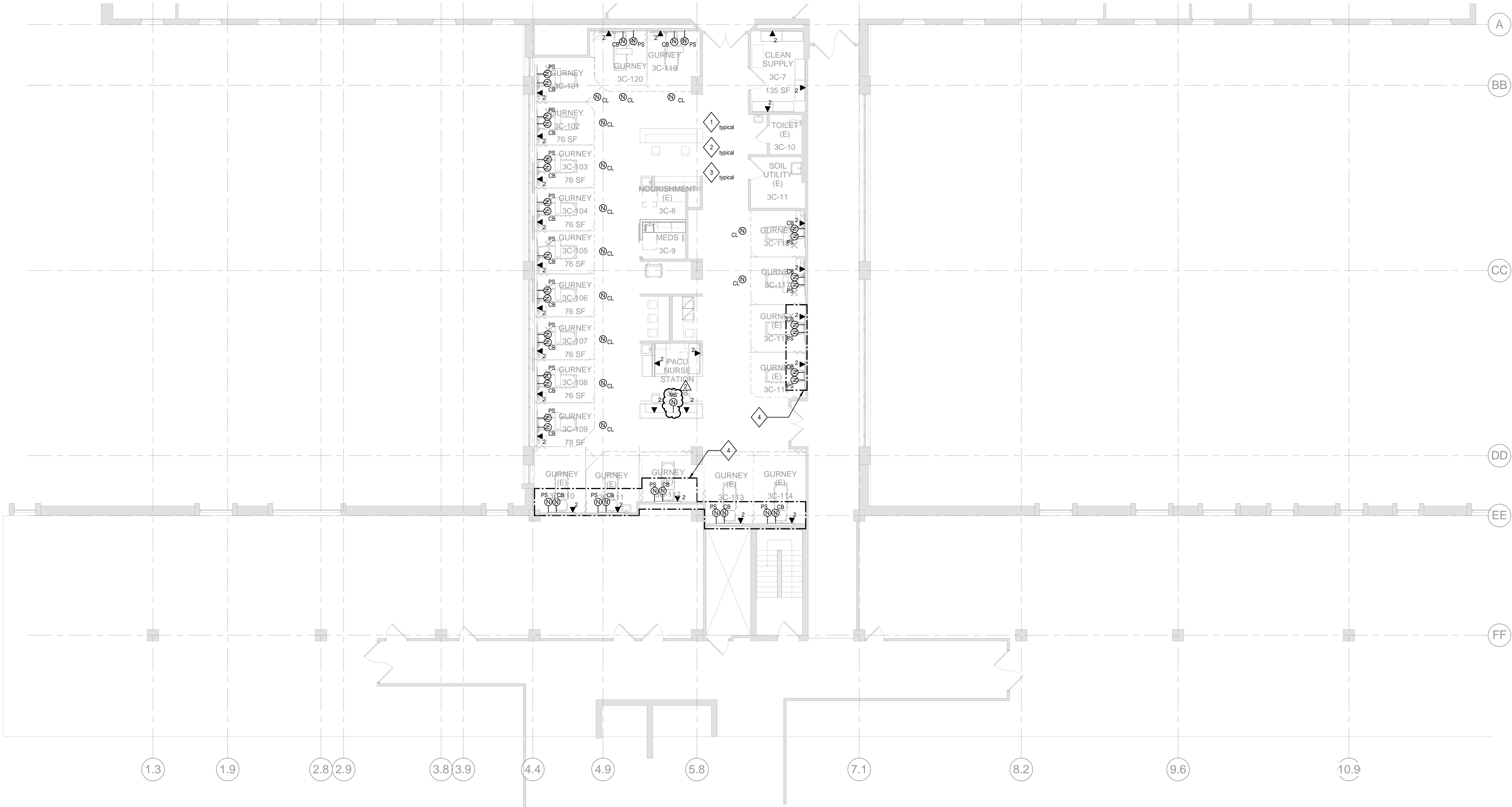
1. ALL EQUIPMENT AND DEVICES SHOWN ON PLANS ARE EXISTING UNLESS OTHERWISE NOTED.
2. ALL TELECOMMUNICATIONS AND NURSE CALL DEVICES SHOWN ON DRAWINGS ARE BASED ON EXISTING RECORD DRAWINGS AND LIMITED SITE SURVEY WORK. EXACT LOCATIONS TO BE FIELD VERIFIED BY CONTRACTOR.
3. MAINTAIN EXISTING NETWORK: PHONE, DATA, WIFI, DAS, NURSE CALL CONTINUITY TO EXISTING SYSTEMS OUTSIDE OF SCOPE OF WORK AREA.
4. FOR ALL DEMOLISHED OUTLETS AND SYSTEMS, DISCONNECT AND REMOVE CONDUIT AND CABLING BACK TO POINT OF ORIGIN/POINT OF TERMINATION. LABEL ANY EMPTY PORTS AS SPARE.

SHEET KEYNOTES

1. MATCH EXISTING ASCOM TELLIGENCE NURSE CALL SYSTEM.
2. PER SFVA REPORTING, AN ADDITIONAL TELLIGENCE HEADEND WILL BE REQUIRED FOR THE RENOVATION/ADDITION OF THIS SPACE. AS ALL PORTS IN THE EXISTING TELLIGENCE HEADEND ARE IN USE.
3. PROVIDE TEMPORARY NURSE CALL CONNECTIONS FOR BEDS AND SYSTEMS REMAINING OPERATIONAL DURING CONSTRUCTION.
4. HEAD WALL REPLACEMENT ONLY, REINSTALL AND REPROGRAM DEVICES REMOVED AND SAVE DURING REMOVAL PHASE. ALL NEW STRUCTURED CABLING. NO CHANGE TO CALL LIGHTS.



KEY PLAN



1 TECHNOLOGY THIRD FLOOR PLAN B203  
1/8" = 1'-0"

100% CONSTRUCTION DRAWINGS

--	--	--	--	--	--	--	--	--	--	--	--	--	--	--	--	--	--	--	--	--	--	--	--	--	--	--	--	--	--	--	--	--	--	--	--	--	--	--	--	--	--	--	--	--	--	--	--	--	--	--	--	--	--	--	--	--	--	--	--	--	--	--	--	--	--	--	--	--	--	--	--	--	--	--	--	--	--	--	--	--	--	--	--	--	--	--	--	--	--	--	--	--	--	--	--	--	--	--	--	--	--	--	--	--	--	--	--	--	--	--	--	--	--	--	--	--	--	--	--	--	--	--	--	--	--	--	--	--	--	--	--	--	--	--	--	--	--	--	--	--	--	--	--	--	--	--	--	--	--	--	--	--	--	--	--	--	--	--	--	--	--	--	--	--	--	--	--	--	--	--	--	--	--	--	--	--	--	--	--	--	--	--	--	--	--	--	--	--	--	--	--	--	--	--	--	--	--	--	--	--	--	--	--	--	--	--	--	--	--	--	--	--	--	--	--	--	--	--	--	--	--	--	--	--	--	--	--	--	--	--	--	--	--	--	--	--	--	--	--	--	--	--	--	--	--	--	--	--	--	--	--	--	--	--	--	--	--	--	--	--	--	--	--	--	--	--	--	--	--	--	--	--	--	--	--	--	--	--	--	--	--	--	--	--	--	--	--	--	--	--	--	--	--	--	--	--	--	--	--	--	--	--	--	--	--	--	--	--	--	--	--	--	--	--	--	--	--	--	--	--	--	--	--	--	--	--	--	--	--	--	--	--	--	--	--	--	--	--	--	--	--	--	--	--	--	--	--	--	--	--	--	--	--	--	--	--	--	--	--	--	--	--	--	--	--	--	--	--	--	--	--	--	--	--	--	--	--	--	--	--	--	--	--	--	--	--	--	--	--	--	--	--	--	--	--	--	--	--	--	--	--	--	--	--	--	--	--	--	--	--	--	--	--	--	--	--	--	--	--	--	--	--	--	--	--	--	--	--	--	--	--	--	--	--	--	--	--	--	--	--	--	--	--	--	--	--	--	--	--	--	--	--	--	--	--	--	--	--	--	--	--	--	--	--	--	--	--	--	--	--	--	--	--	--	--	--	--	--	--	--	--	--	--	--	--	--	--	--	--	--	--	--	--	--	--	--	--	--	--	--	--	--	--	--	--	--	--	--	--	--	--	--	--	--	--	--	--	--	--	--	--	--	--	--	--	--	--	--	--	--	--	--	--	--	--	--	--	--	--	--	--	--	--	--	--	--	--	--	--	--	--	--	--	--	--	--	--	--	--	--	--	--	--	--	--	--	--	--	--	--	--	--	--	--	--	--	--	--	--	--	--	--	--	--	--	--	--	--	--	--	--	--	--	--	--	--	--	--	--	--	--	--	--	--	--	--	--	--	--	--	--	--	--	--	--	--	--	--	--	--	--	--	--	--	--	--	--	--	--	--	--	--	--	--	--	--	--	--	--	--	--	--	--	--	--	--	--	--	--	--	--	--	--	--	--	--	--	--	--	--	--	--	--	--	--	--	--	--	--	--	--	--	--	--	--	--	--	--	--	--	--	--	--	--	--	--	--	--	--	--	--	--	--	--	--	--	--	--	--	--	--	--	--	--	--	--	--	--	--	--	--	--	--	--	--	--	--	--	--	--	--	--	--	--	--	--	--	--	--	--	--	--	--	--	--	--	--	--	--	--	--	--	--	--	--	--	--	--	--	--	--	--	--	--	--	--	--	--	--	--	--	--	--	--	--	--	--	--	--	--	--	--	--	--	--	--	--	--	--	--	--	--	--	--	--	--	--	--	--	--	--	--	--	--	--	--	--	--	--	--	--	--	--	--	--	--	--	--	--	--	--	--	--	--	--	--	--	--	--	--	--	--	--	--	--	--	--	--	--	--	--	--	--	--	--	--	--	--	--	--	--	--	--	--	--	--	--	--	--	--	--	--	--	--	--	--	--	--	--	--	--	--	--	--	--	--	--	--	--	--	--	--	--	--	--	--	--	--	--	--	--	--	--	--	--	--	--	--	--	--	--	--	--	--	--	--	--	--	--	--	--	--	--	--	--	--	--	--	--	--	--	--	--	--	--	--	--	--	--	--	--	--	--	--	--	--	--	--	--	--	--	--	--	--	--	--	--	--	--	--	--	--	--	--	--	--	--	--	--	--	--	--	--	--	--	--	--	--	--	--	--	--	--	--	--	--	--	--	--	--	--	--	--	--	--	--	--	--	--	--	--	--	--	--	--	--	--	--	--	--	--	--	--	--	--	--	--	--	--	--	--	--	--	--	--	--	--	--	--	--	--	--	--	--	--	--	--	--	--	--	--	--	--	--	--	--	--	--	--	--	--	--	--	--	--	--	--	--	--	--	--	--	--	--	--	--	--	--	--	--	--	--	--	--	--	--	--	--	--	--	--	--	--	--	--	--	--	--	--	--	--	--	--	--	--	--	--	--	--	--	--	--	--	--	--	--	--	--	--	--	--	--	--	--	--	--	--	--	--	--	--	--	--	--	--	--	--	--	--	--	--	--	--	--	--	--	--	--	--	--	--	--	--	--	--	--	--	--	--	--	--	--	--	--	--	--	--	--	--	--	--	--	--	--	--	--	--	--	--	--	--	--	--	--	--	--	--	--	--	--	--	--	--	--	--	--	--	--	--	--	--	--	--	--	--	--	--	--	--	--	--	--	--	--	--	--	--	--	--	--	--	--	--	--	--	--	--	--	--	--	--	--	--	--	--	--	--	--	--	--	--	--	--	--	--	--	--	--	--	--	--	--	--	--	--	--	--	--	--	--	--	--	--	--	--	--	--	--	--	--	--	--	--	--	--	--	--	--	--	--	--	--	--	--	--	--	--	--	--	--	--	--	--	--	--	--	--	--	--	--	--	--	--	--	--	--	--	--	--	--	--	--	--	--	--	--	--	--	--	--	--	--	--	--	--	--	--	--	--	--	--	--	--	--	--	--	--	--	--	--	--	--	--	--	--	--	--	--	--	--	--	--	--	--	--	--	--	--	--	--	--	--	--	--	--	--	--	--	--	--	--	--	--	--	--	--	--	--	--	--	--	--	--	--	--	--	--