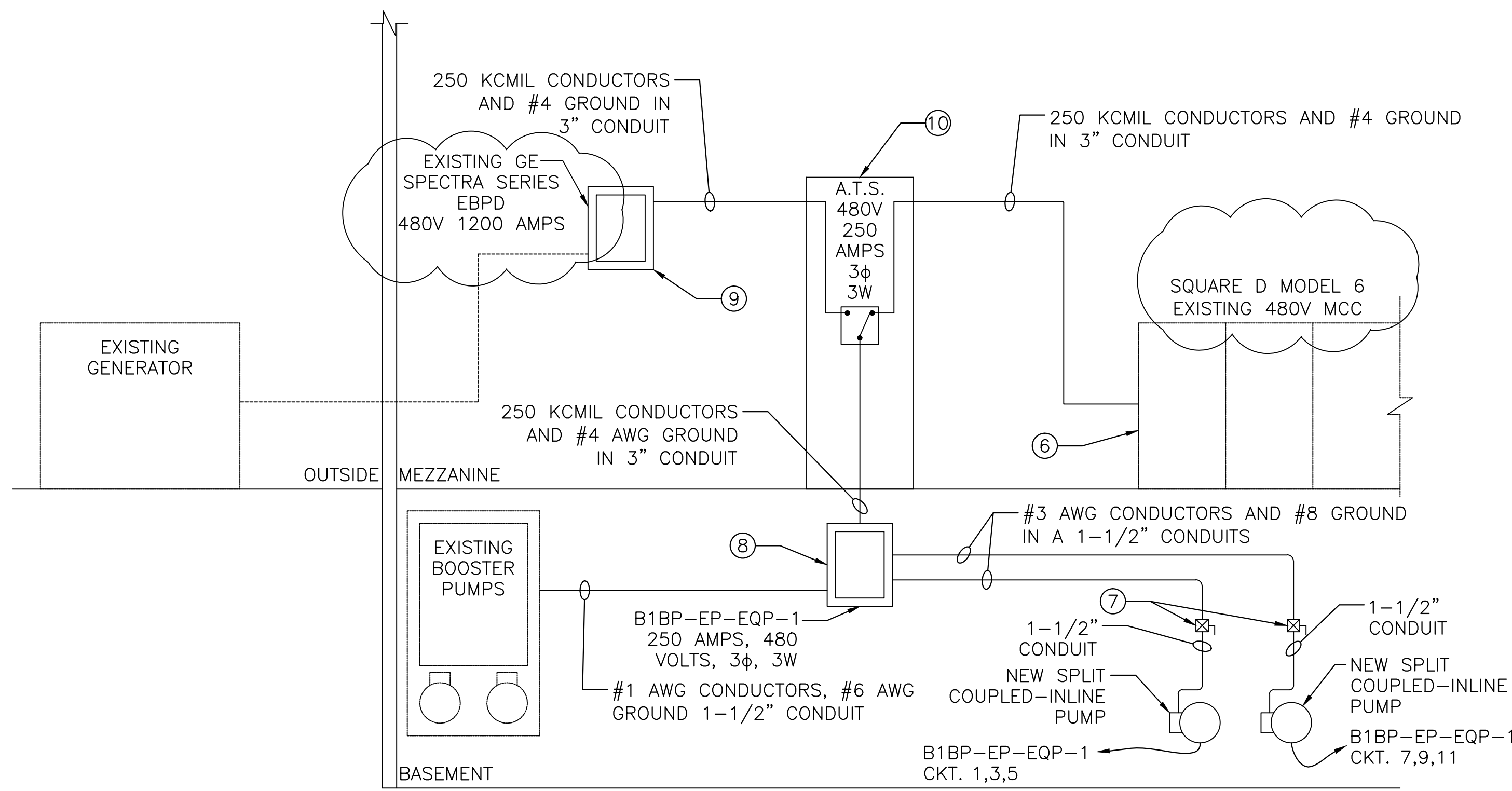


NAME	VOLTAGE	AMPACITY	POLE	SCCR	NOTES
ATS	480	250	3	42,000	

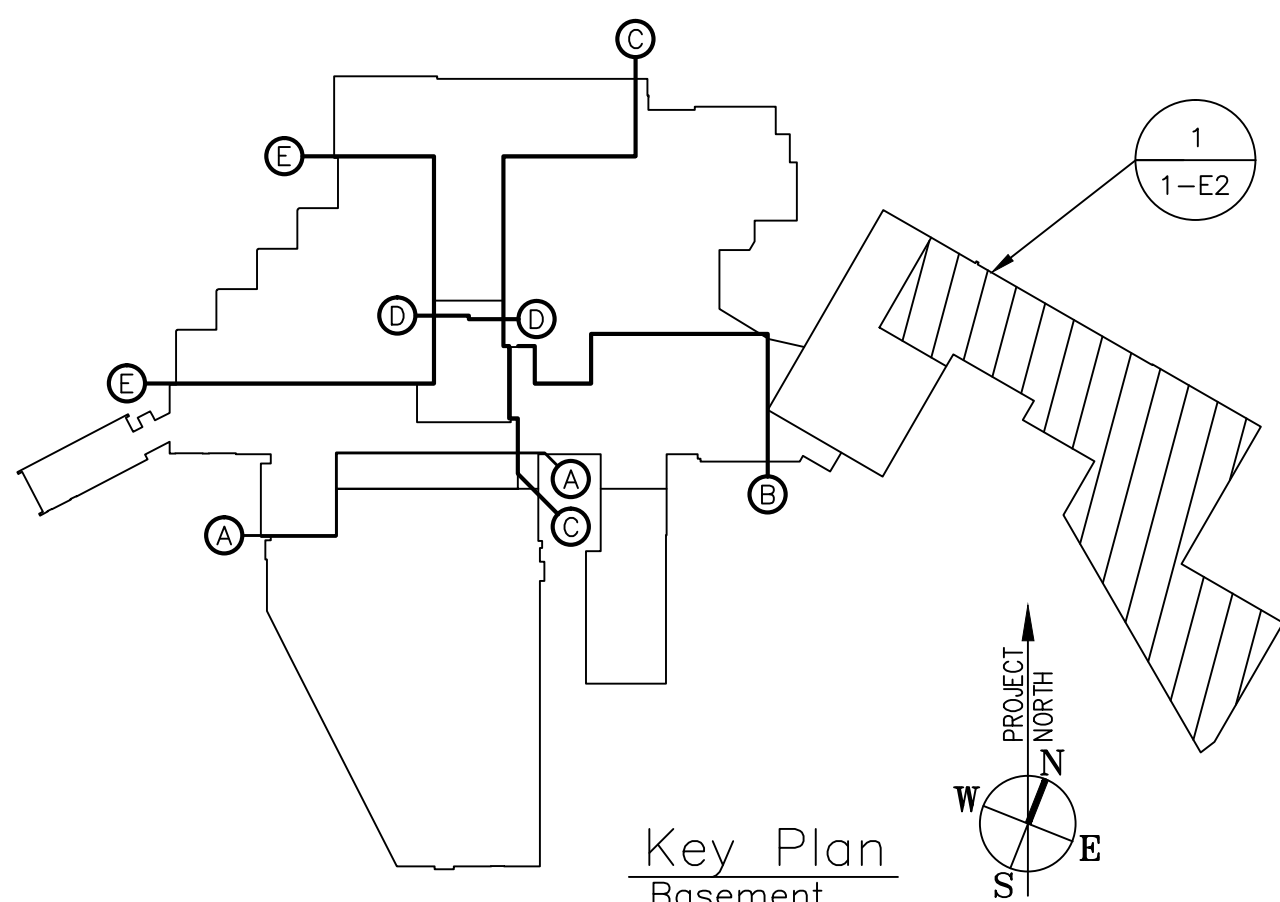
NOTES:
1. EMERGENCY SOURCE FEEDER AND NORMAL SOURCE FEEDER TO BE SAME SIZE AS LOAD FEEDER.



KEYED CONSTRUCTION NOTES:

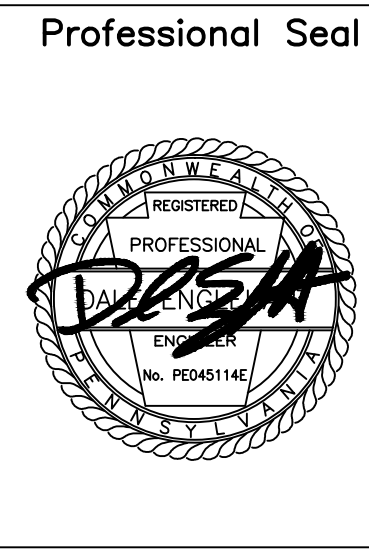
- REMOVE EXISTING ELECTRICAL FEEDS STARTERS AND ALL RELATED EQUIPMENT TO PUMPS. COORDINATE REMOVAL WITH PLUMBING CONTRACTOR SO ONLY ONE PUMP IS DE-ENERGIZED AT ONE TIME.
- PROVIDE COMBINATION MOTOR STARTER NEMA 3R DISCONNECTS WITH 24V COIL. CONTROL WIRING BY MECH. CONTRACTOR.
- EXISTING SQUARE D MCC 480V, 3 ϕ . PROVIDE 250A BREAKER AND CONNECT THE NEW A.T.S.
- EXISTING PANEL EBPD 480V, 3 ϕ NORMAL DARK. PROVIDE 250A BREAKER AND CONNECT TO NEW A.T.S.
- PROVIDE SHOP DRAWINGS OF UNISTRUT SUPPORT FOR REVIEW BY ENGINEER.
- EQUIPMENT MCC, PROVIDE 250 AMP CIRCUIT BREAKER MATCH AIC RATING OF MCC.
- NEW COMBINATION MOTOR STARTER WITH 24V COIL.
- PROVIDE PANEL "B1BP-EP-EQP-1", AIC RATING TO MATCH EXISTING MCC FEEDING PANEL.
- PROVIDE 250 AMP CIRCUIT BREAKER, MATCH AIC RATING OF PANEL.
- LOCATE REMOTE ANNUNCIATOR AS DIRECTED BY RESIDENT ENGINEER.

PANELBOARD SCHEDULE																	
DESIGNATION:						BUS: 250A CU MAIN: 250A BREAKER TYPE: SQD 1-LINE OR EQUAL				VOLTAGE: INTERRUPTING RATING: 480 V, 3Ø, 3W ENCLOSURE: SEE ONE LINE NEMA 1				LOCATION: FED BY: MOUNTING:		BOILER PLANT SEE ONE-LINE SURFACE	
CKT NO	POLE	TRIP	WIRE	G	CONDUIT	LOAD	KVA ~ A	KVA ~ B	KVA ~ C	LOAD	CONDUIT	G	WIRE	TRIP	POLE	CKT NO	
1	3	80	3	8	1-1/2"	SPLIT COUPLED-INLINE PUMP	11.07	23.60		EXISTING BOOSTER PUMPS	1-1/2"	6	1	110	3	2	
3	/	/	/	/	/				11.07		23.60	/	/	1	/	/	4
5	/	/	/	/	/						11.07	23.60	/	/	1	/	6
7	3	80	3	8	1-1/2"	SPLIT COUPLED-INLINE PUMP	11.07	0.00		SPACE	/	/	/	/	/	8	
9	/	/	/	/	/				11.07		0.00	/	/	/	/	/	10
11	/	/	/	/	/						11.07	0.00	/	/	/	/	12
13	/	/	/	/	/	SPACE	0.00	0.00		SPACE	/	/	/	/	/	14	
15	/	/	/	/	/				0.00		0.00	/	/	/	/	/	16
17	/	/	/	/	/						0.00	0.00	/	/	/	/	18
19	/	/	/	/	/	SPACE	0.00	0.00		SPACE	/	/	/	/	/	20	
21	/	/	/	/	/				0.00		0.00	/	/	/	/	/	22
23	/	/	/	/	/						0.00	0.00	/	/	/	/	24
25	/	/	/	/	/	SPACE	0.00	0.00		SPACE	/	/	/	/	/	26	
27	/	/	/	/	/				0.00		0.00	/	/	/	/	/	28
29	/	/	/	/	/						0.00	0.00	/	/	/	/	30
CONNECTED KVA PER PHASE							45.74	45.74	45.74								
TOTAL CONNECTED KVA							137.22			TOTAL DEMAND AMPERES 123.79							
TOTAL DEMAND KVA 75 %							102.92										



BID AMENDMENT NO.1
AUGUST 24, 2016
FULLY SPRINKLERED

AMENDMENT NO. 1	8/24/16
Revisions	Date



Project Lead
NEI
NORTHEAST INFRASTRUCTURE, LLC
630 PARK STREET HONESDALE, PA 18431
570-253-0846 OFFICE 570-253-1935 FAX
WWW.NEINFRA.COM

Drawing Title
BUILDING 1 BOILER PLANT
BASEMENT AND MEZZANINE
ELECTRICAL PLANS
Facility Project Name
DEPARTMENT OF VETERANS
AFFAIRS MEDICAL CENTER
WILKES-BARRE, PA

Project Title
PLUMBING SYSTEM UPGRADE
PHASE II
Building Number
1
Checked
D.L.E.
Drawn
C.E.T.

Date
08/24/2016
Project No.
693-11-119
DRAWING NO.
DRAWING
1-E2
DWG. 40 OF 55

Veterans Affairs