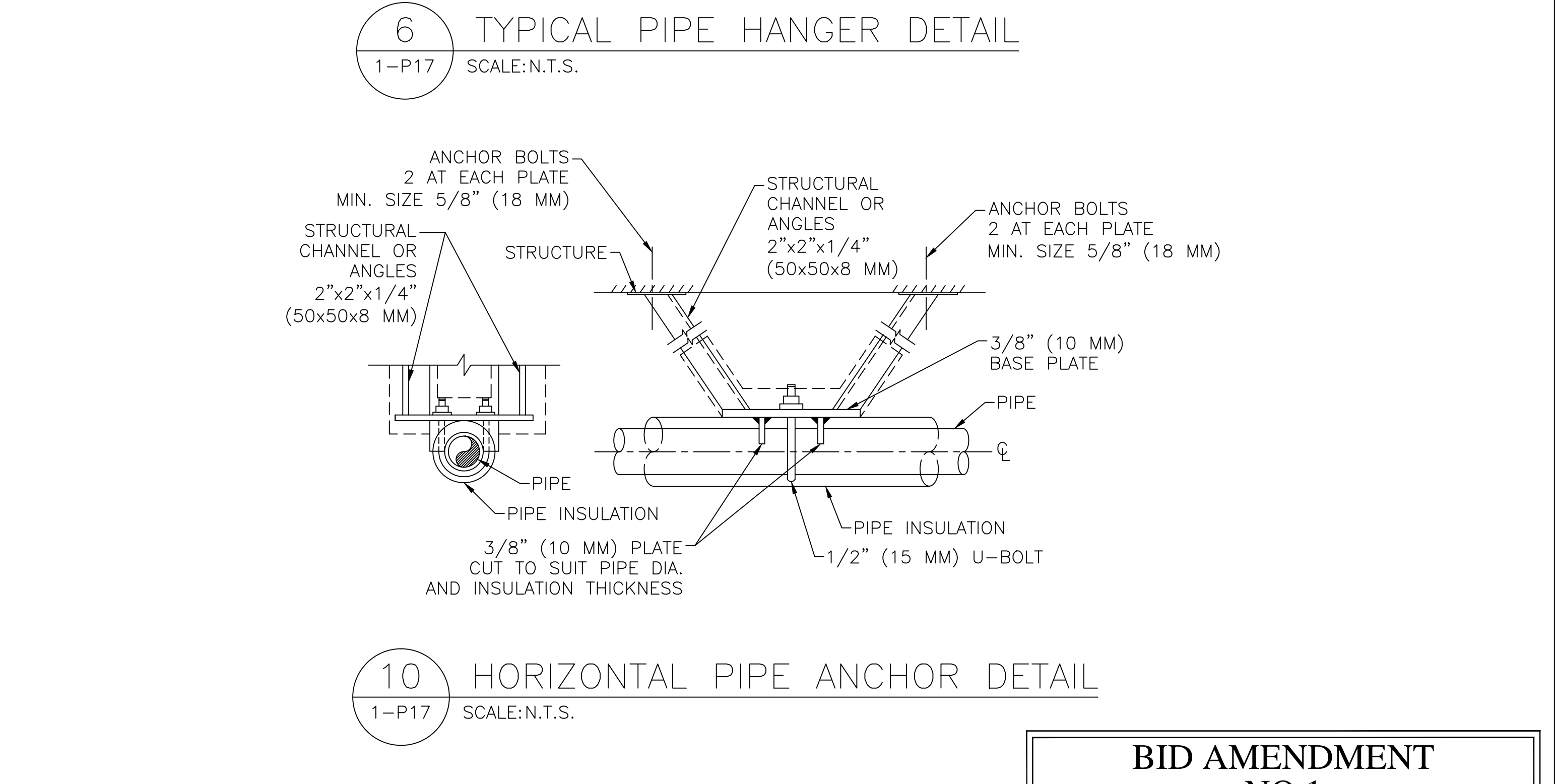
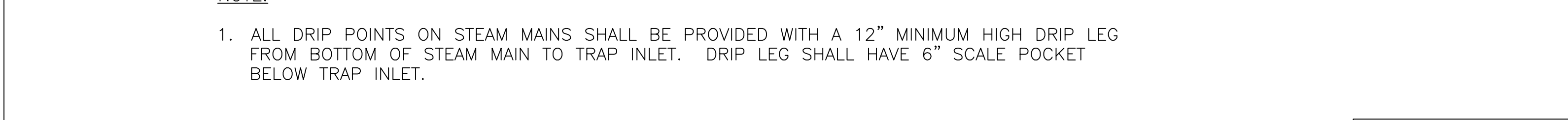
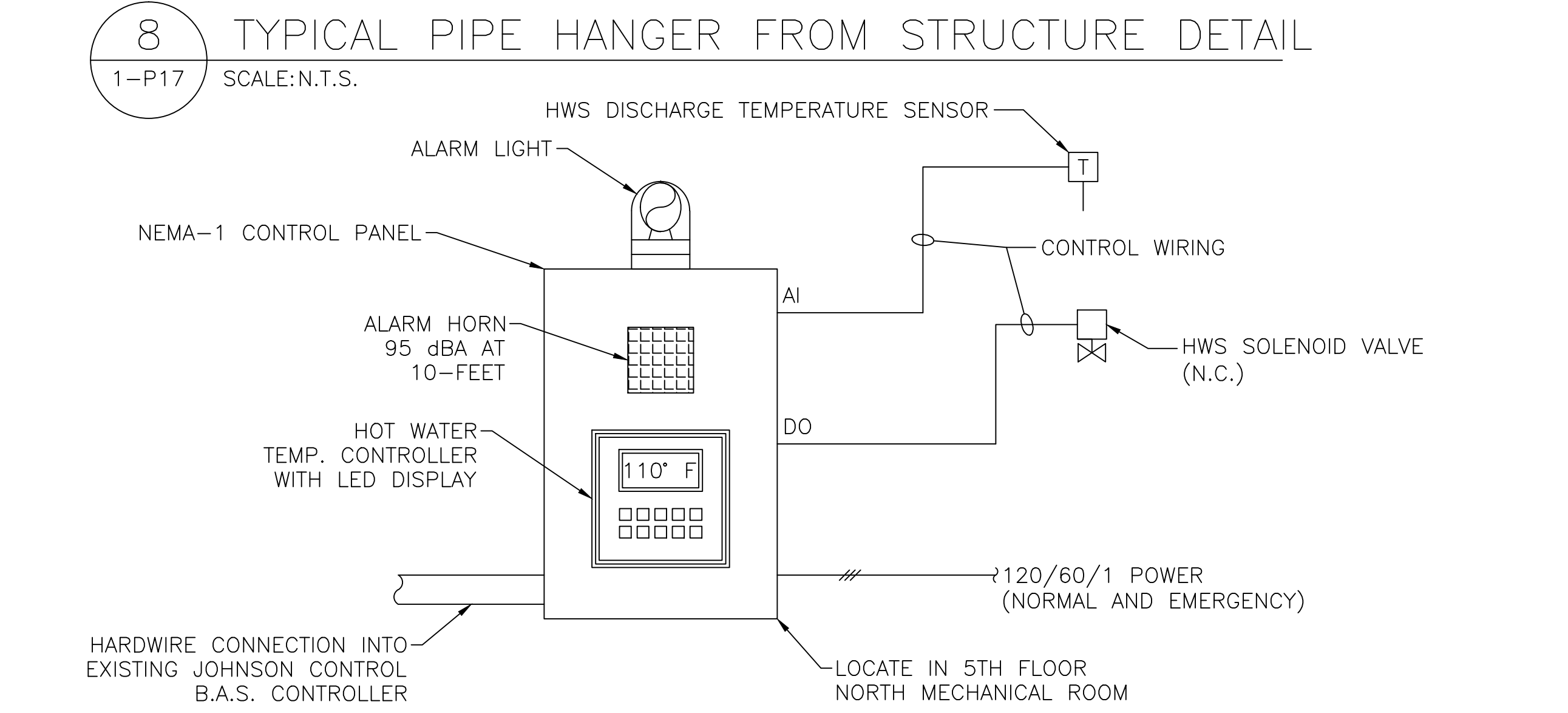
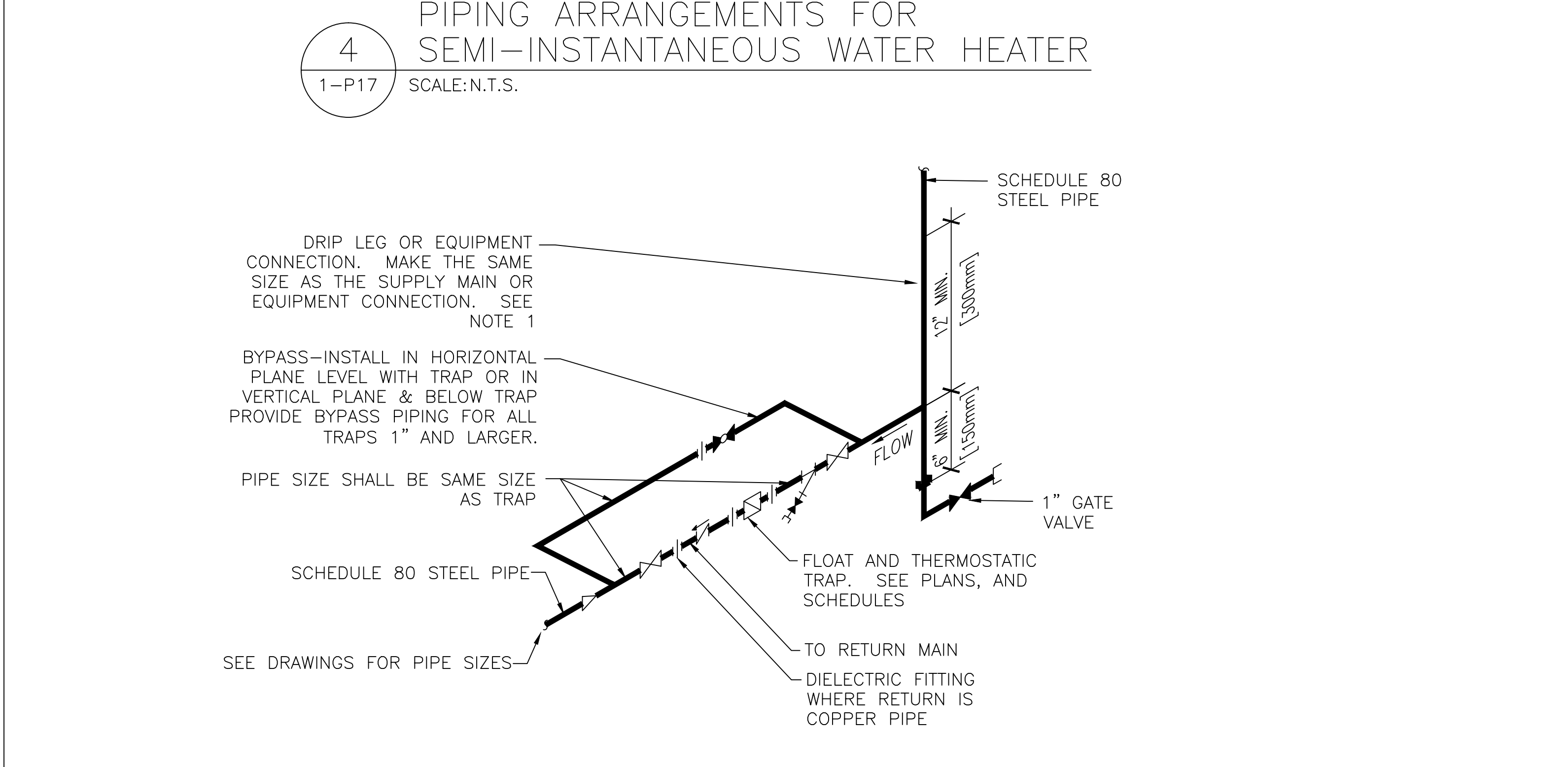


MAXIMUM PIPE/TUBING SUPPORT SPACING																							
NOMINAL SIZE	IN. (MM)	THRU 3/4\" (20)	1 (25)	1 1/4 (32)	1 1/2 (40)	2 (50)	2 1/2 (50)	3 (75)	4 (100)	5 (125)	6 (150)	8 (200)	10 (250)	12 (300)	14 (350)	16 (400)	18 (450)	20 (500)	24 (600)				
PIPE	FT. (M)	7 (2.1)	7 (2.1)	7 (2.1)	9 (2.7)	10 (3.0)	11 (3.4)	12 (3.7)	14 (4.1)	16 (4.9)	17 (5.2)	19 (5.8)	22 (6.7)	23 (7.0)	25 (7.6)	27 (8.2)	28 (8.5)	30 (9.1)	32 (9.6)				
TUBING	FT. (M)	5 (1.5)	6 (1.8)	7 (2.1)	8 (2.4)	8 (2.4)	9 (2.7)	10 (3.0)	12 (3.7)	13 (4.0)	14 (4.1)	16 (4.9)	-	-	-	-	-	-	-				

NOTE: SEE DRAWINGS FOR SPECIAL PIPE SUPPORTS WHERE REQUIRED



AMENDMENT NO. 1		8/24/16
Revisions		Date

Professional Seal

Project Lead

**NORTHEAST INFRASTRUCTURE, LLC**  
630 PARK STREET HONESDALE, PA 18431  
570-253-0846 OFFICE 570-253-1935 FAX  
WWW.NEINFRA.COM

Drawing Title

PLUMBING DETAILS

Facility Project Name

DEPARTMENT OF VETERANS AFFAIRS MEDICAL CENTER WILKES-BARRE, PA

Project Title

PLUMBING SYSTEM UPGRADE PHASE II

Building Number

Checked L.J.M.

Drawn D.J.P.

Location

WILKES-BARRE, PENNSYLVANIA

BID AMENDMENT NO.1

AUGUST 24, 2016

FULLY SPRINKLERED

Date

08/24/2016

Project No.

693-11-119

DRAWING NO.

DRAWING 1-P17

DWG. 27 OF 55

veterans Affairs