
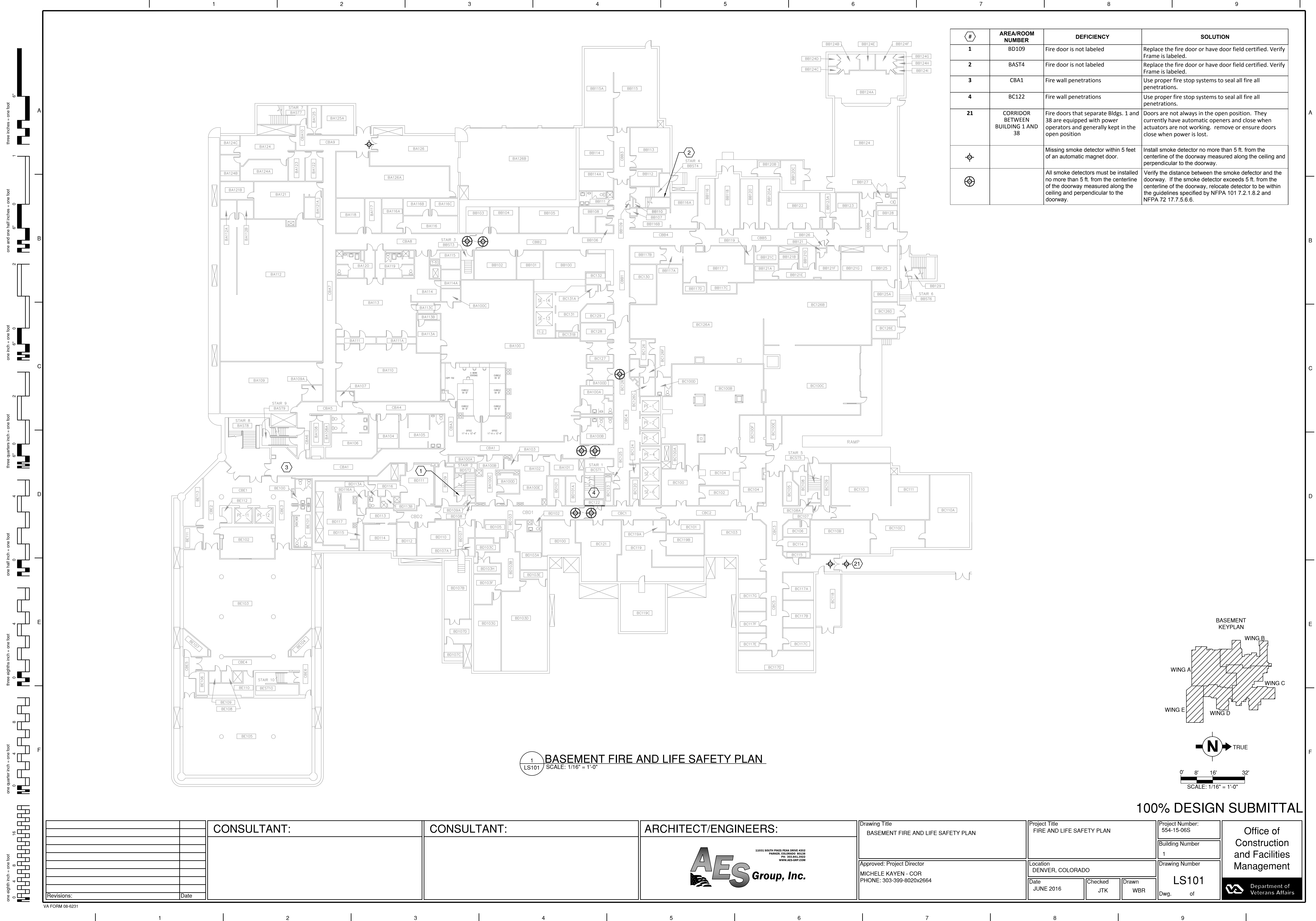


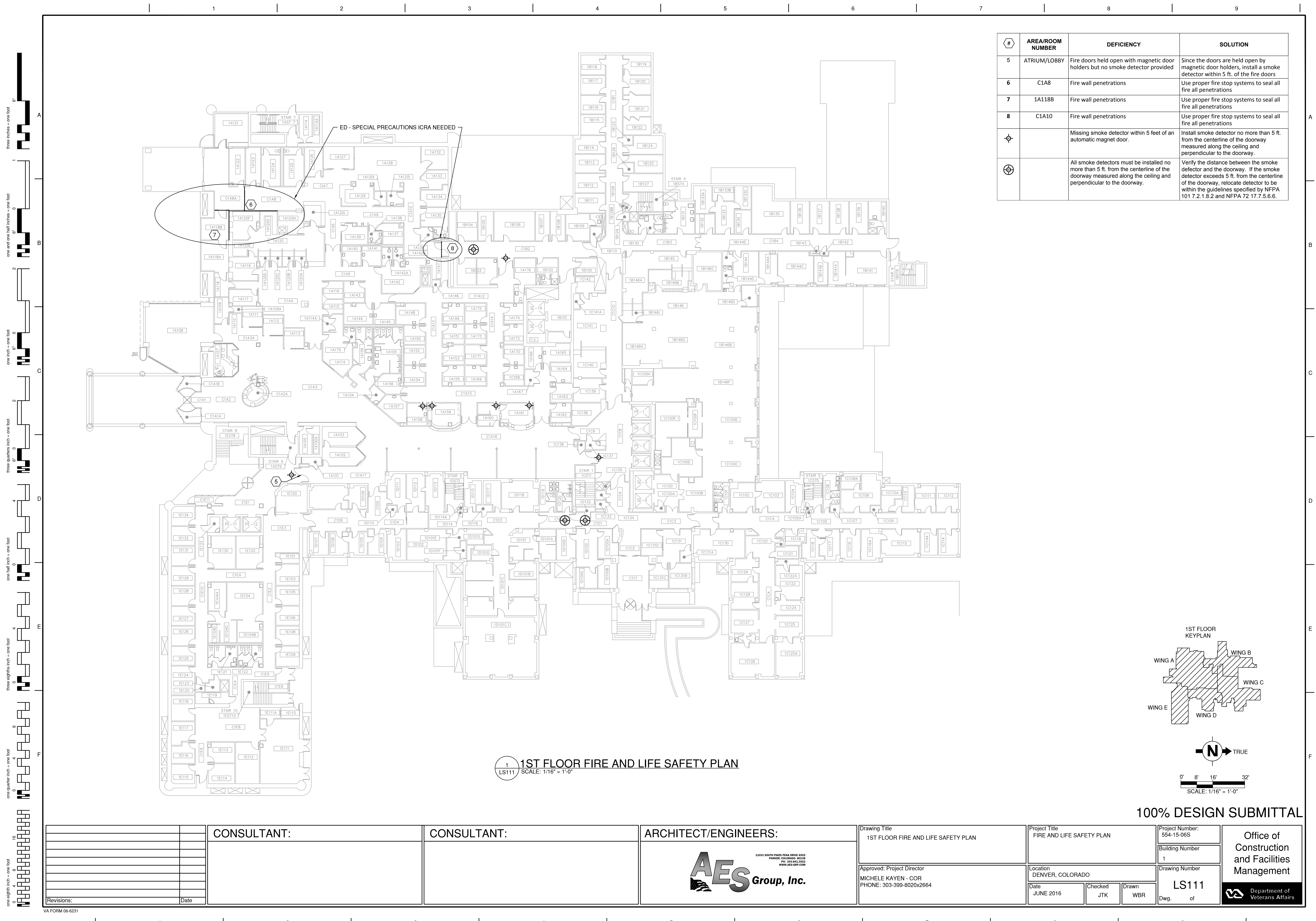
[illegible]

one eighth inch = one foot

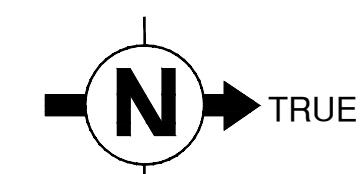
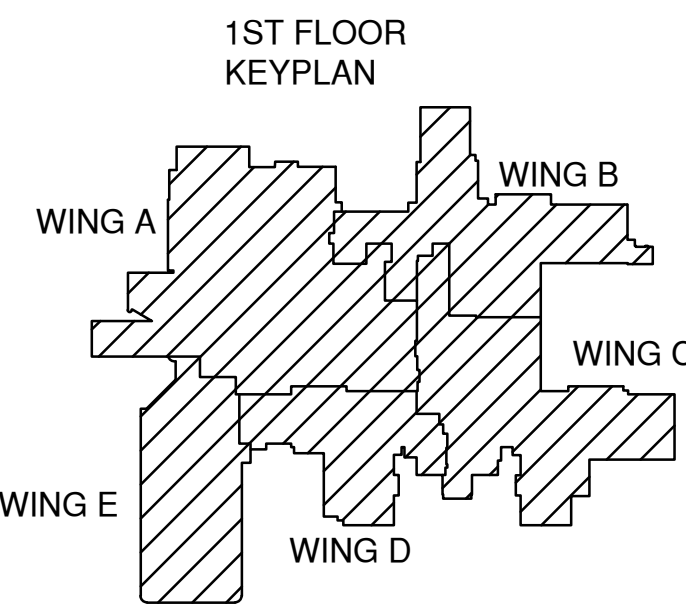
VA FORM 08-6231



<b>CONSULTANT:</b>		<b>CONSULTANT:</b>		<b>ARCHITECT/ENGINEERS:</b>		<b>Drawing Title</b> BASEMENT FIRE AND LIFE SAFETY PLAN		<b>Project Title</b> FIRE AND LIFE SAFETY PLAN		<b>Project Number:</b> 554-15-06S		<b>Office of Construction and Facilities Management</b> 
						Approved: Project Director MICHELE KAYEN - COR PHONE: 303-399-8020x2664		Location DENVER, COLORADO		<b>Building Number</b> 1		
<b>Revisions:</b>								<b>Date</b> JUNE 2016		<b>Checked</b> JTK		
										<b>Drawing Number</b> LS101		<b>Dwg. of</b>



#	AREA/ROOM NUMBER	DEFICIENCY	SOLUTION
5	ATRIUM/LOBBY	Fire doors held open with magnetic door holders but no smoke detector provided	Since the doors are held open by magnetic door holders, install a smoke detector within 5 ft. of the fire doors
6	C1A8	Fire wall penetrations	Use proper fire stop systems to seal all fire all penetrations
7	1A118B	Fire wall penetrations	Use proper fire stop systems to seal all fire all penetrations
8	C1A10	Fire wall penetrations	Use proper fire stop systems to seal all fire all penetrations
⊕		Missing smoke detector within 5 feet of an automatic magnet door.	Install smoke detector no more than 5 ft. from the centerline of the doorway measured along the ceiling and perpendicular to the doorway.
⊕		All smoke detectors must be installed no more than 5 ft. from the centerline of the doorway measured along the ceiling and perpendicular to the doorway.	Verify the distance between the smoke detector and the doorway. If the smoke detector exceeds 5 ft. from the centerline of the doorway, relocate detector to be within the guidelines specified by NFPA 101 7.2.1.8.2 and NFPA 72 17.7.5.6.6.

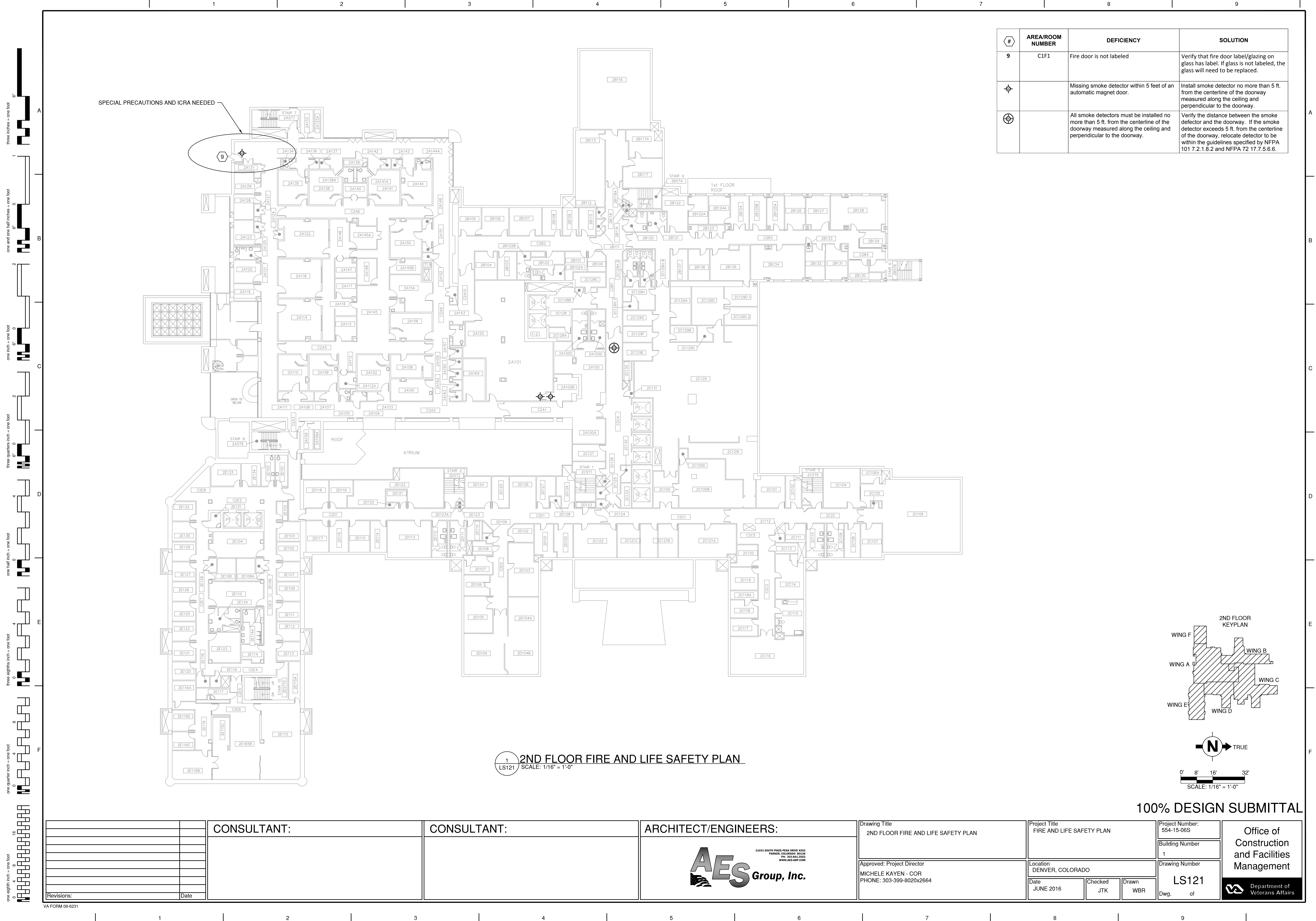


0' 8' 16' 32'  
SCALE: 1/16" = 1'-0"

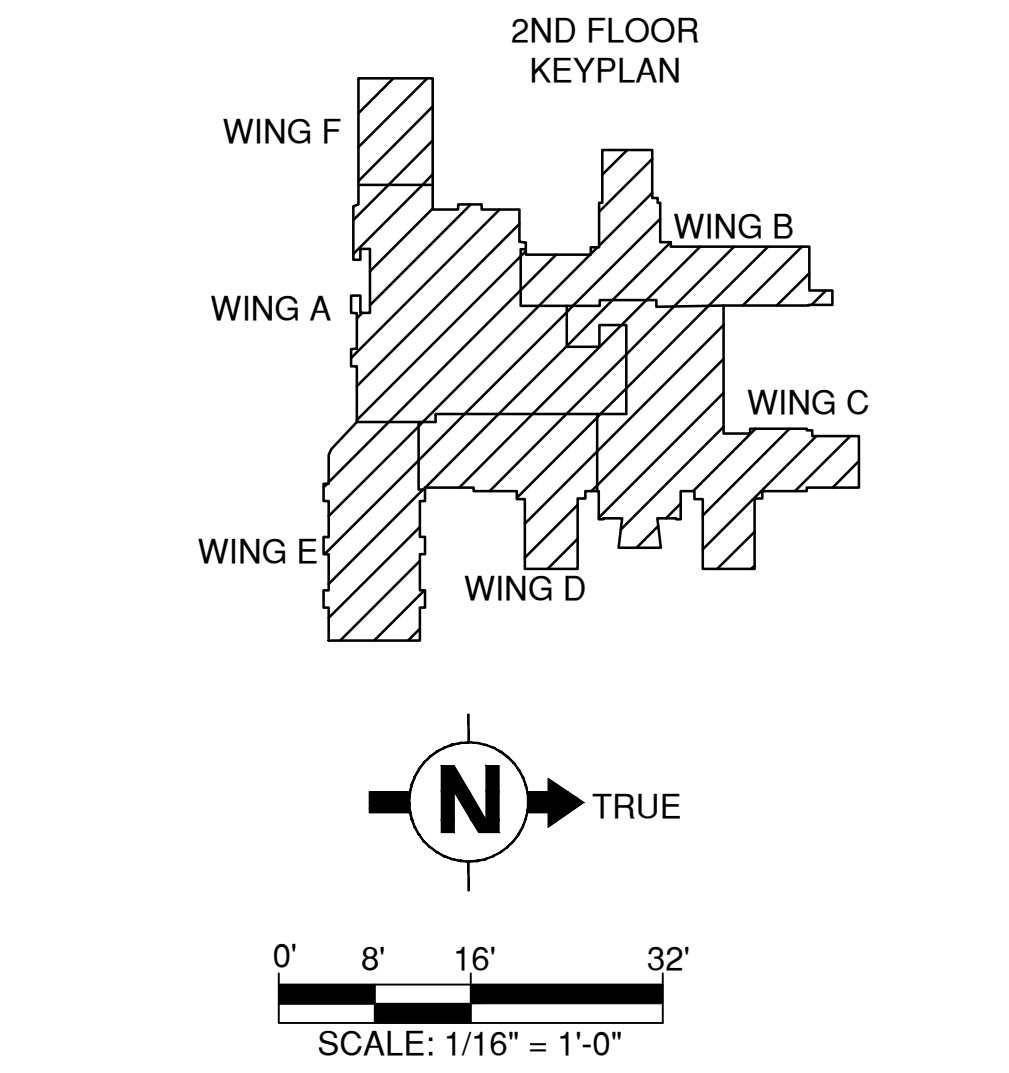
100% DESIGN SUBMITTAL


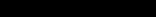
<b>CONSULTANT:</b>		<b>CONSULTANT:</b>		<b>ARCHITECT/ENGINEERS:</b>		<b>Drawing Title</b> 1ST FLOOR FIRE AND LIFE SAFETY PLAN		<b>Project Title</b> FIRE AND LIFE SAFETY PLAN		<b>Project Number:</b> 554-15-06S		<b>Office of Construction and Facilities Management</b> 	
						Approved: Project Director MICHELE KAYEN - COR PHONE: 303-399-8020x2664		Location DENVER, COLORADO		<b>Building Number</b> 1			
<b>Revisions:</b>								Date JUNE 2016		<b>Drawing Number</b> LS111			
<b>Date</b>								<b>Checked</b> JTK		<b>Drawn</b> WBR		<b>Dwg. of</b>	

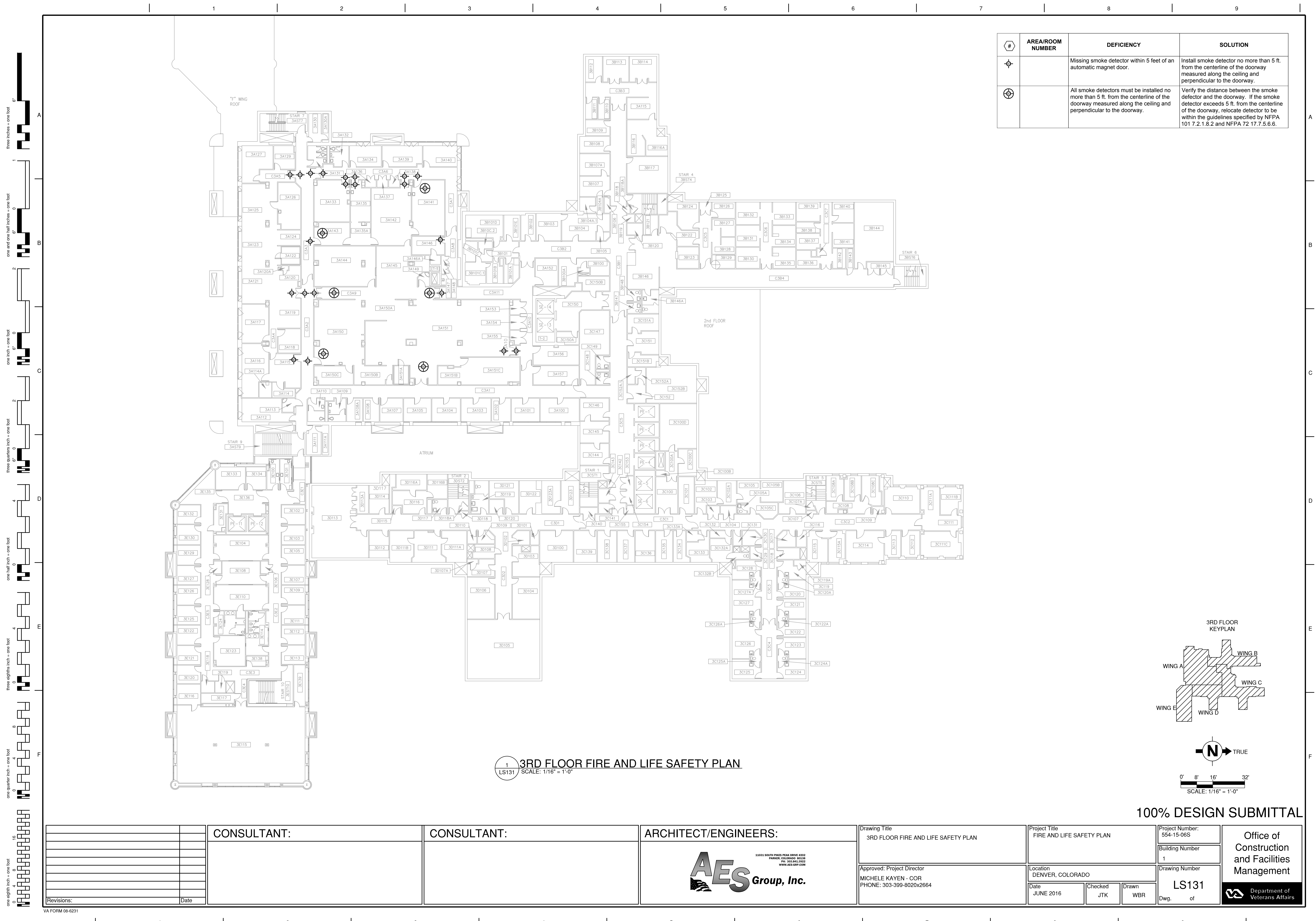




#	AREA/ROOM NUMBER	DEFICIENCY	SOLUTION
9	C1F1	Fire door is not labeled	Verify that fire door label/glazing on glass has label. If glass is not labeled, the glass will need to be replaced.
		Missing smoke detector within 5 feet of an automatic magnet door.	Install smoke detector no more than 5 ft. from the centerline of the doorway measured along the ceiling and perpendicular to the doorway.
		All smoke detectors must be installed no more than 5 ft. from the centerline of the doorway measured along the ceiling and perpendicular to the doorway.	Verify the distance between the smoke detector and the doorway. If the smoke detector exceeds 5 ft. from the centerline of the doorway, relocate detector to be within the guidelines specified by NFPA 101 7.2.1.8.2 and NFPA 72 17.7.5.6.6.

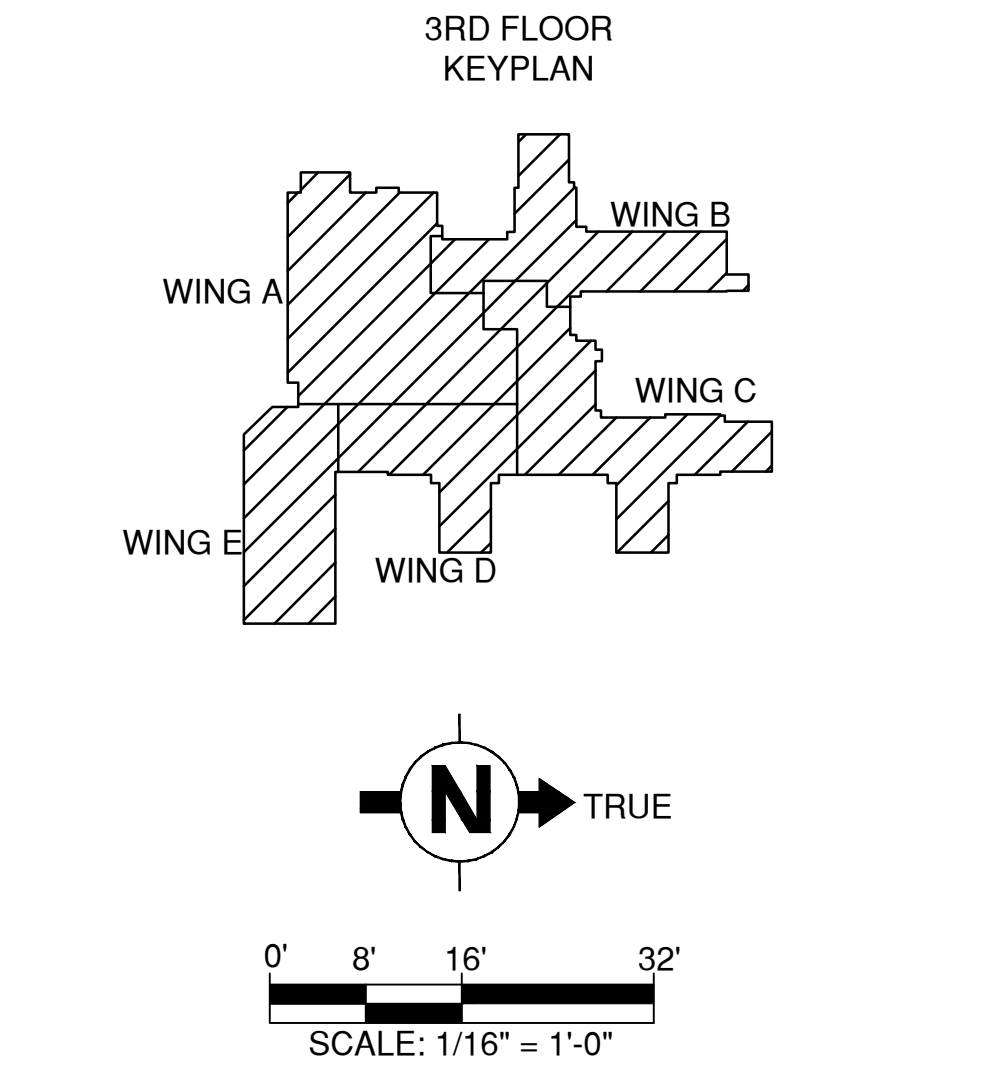


		CONSULTANT:	CONSULTANT:	ARCHITECT/ENGINEERS:	Drawing Title 2ND FLOOR FIRE AND LIFE SAFETY PLAN	Project Title FIRE AND LIFE SAFETY PLAN	Project Number: 554-15-06S	Office of Construction and Facilities Management
				<div><div>11033 SOUTH PIKES PEAK DRIVE #202 PARKER, COLORADO 80138 PH: 303.842.9922 WWW.AES-GRP.COM</div></div>			Building Number 1	
					Approved: Project Director MICHELE KAYEN - COR PHONE: 303-399-8020x2664	Location DENVER, COLORADO	Drawing Number LS121	
						Date JUNE 2016	Checked JTK	
Revisions:	Date							 Department of Veterans Affairs

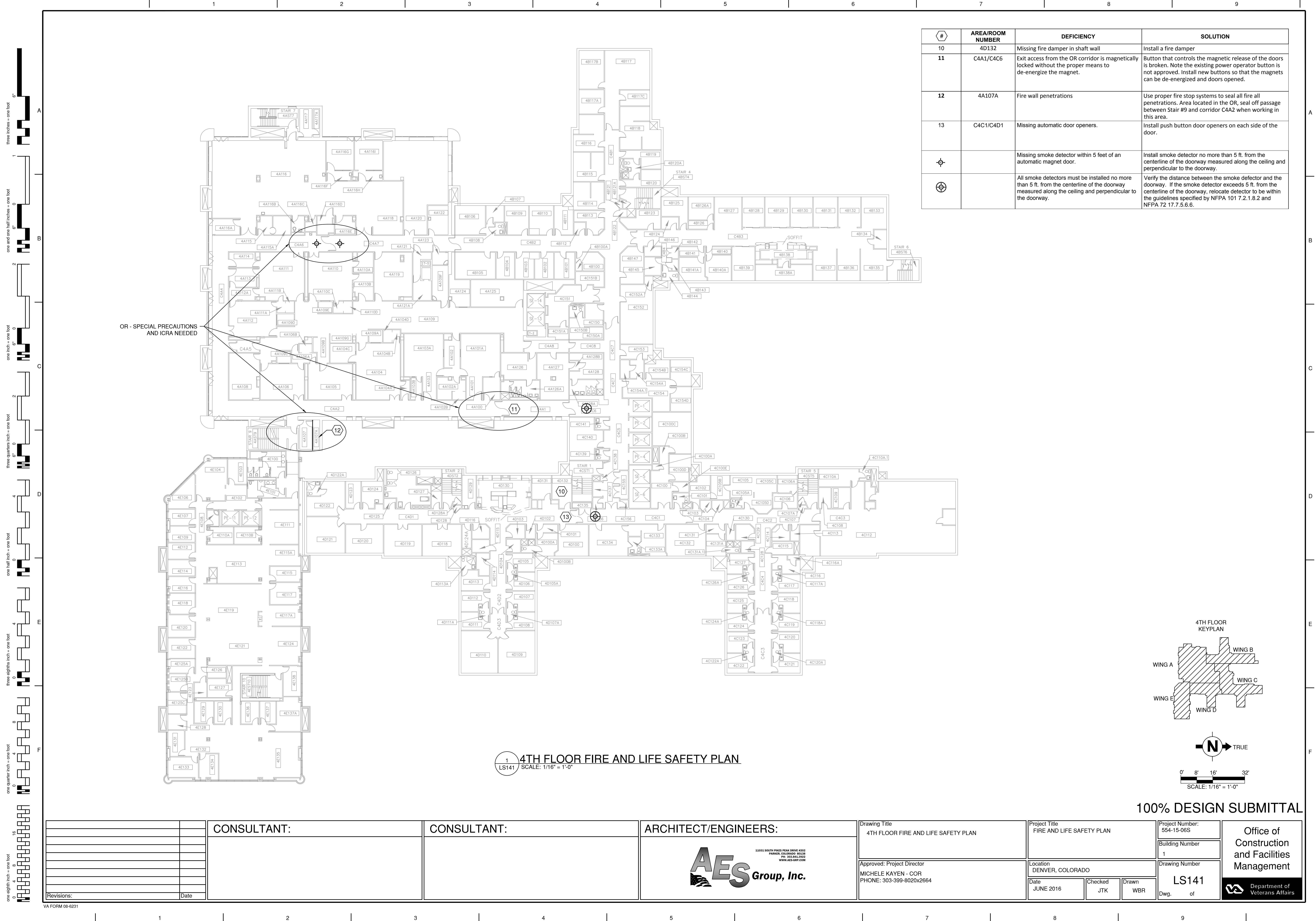


#	AREA/ROOM NUMBER	DEFICIENCY	SOLUTION
1		Missing smoke detector within 5 feet of an automatic magnet door.	Install smoke detector no more than 5 ft. from the centerline of the doorway measured along the ceiling and perpendicular to the doorway.
2		All smoke detectors must be installed no more than 5 ft. from the centerline of the doorway measured along the ceiling and perpendicular to the doorway.	Verify the distance between the smoke detector and the doorway. If the smoke detector exceeds 5 ft. from the centerline of the doorway, relocate detector to be within the guidelines specified by NFPA 101 7.2.1.8.2 and NFPA 72 17.7.5.6.6.

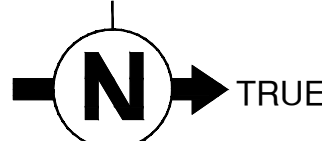
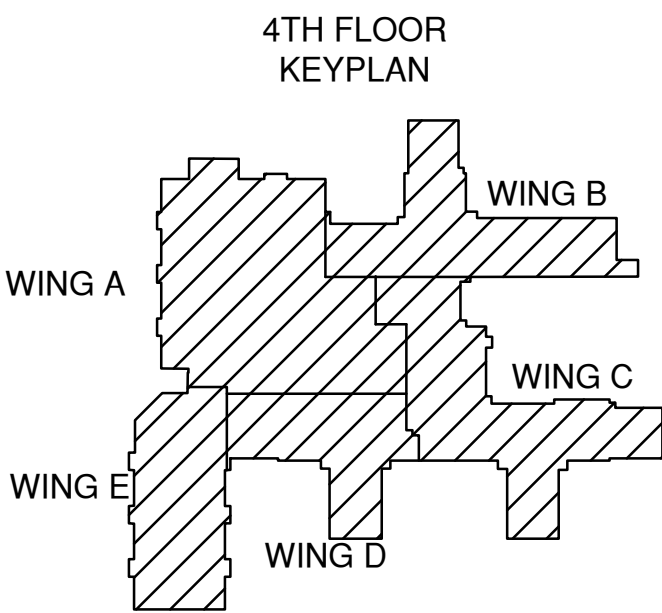
1 3RD FLOOR FIRE AND LIFE SAFETY PLAN  
LS131 SCALE: 1/16" = 1'-0"



		<div>CONSULTANT:</div>	<div>CONSULTANT:</div>	<div>ARCHITECT/ENGINEERS:</div> <div><div><div><div><div></div><div></div><div></div></div><div><div></div><div></div><div></div></div><div><div></div><div></div><div></div></div></div><div><div></div><div></div><div></div></div><div><div></div><div></div><div></div></div></div><div><div>11011 SOUTH PIKES PEAK DRIVE #202</div><div>PARKER, COLORADO 80138</div><div>PH: 303-842-9922</div><div>WWW.AES-GRP.COM</div></div><div><div><div><div></div><div></div><div></div></div><div><div></div><div></div><div></div></div><div><div></div><div></div><div></div></div></div><div><div></div><div></div><div></div></div><div><div></div><div></div><div></div></div></div><div><div></div><div></div><div></div></div><div><div></div><div></div><div></div></div></div> <div><div></div><div></div><div></div></div> <div><div></div><div></div><div></div></div> <div><div></div><div></div><div></div></div> <div><div></div><div></div><div></div></div> <div><div></div><div></div><div></div></div> <div><div></div><div></div><div></div></div> <div><div></div><div></div><div></div></div> <div><div></div><div></div><div></div></div> <div><div></div><div></div><div></div></div> <div><div></div><div></div><div></div></div> <div><div></div><div></div><div></div></div> <div><div></div><div></div><div></div></div> <div><div></div><div></div><div></div></div> <div><div></div><div></div><div></div></div> <div><div></div><div></div><div></div></div> <div><div></div><div></div><div></div></div> <div><div></div><div></div><div></div></div> <div><div></div><div></div><div></div></div> <div><div></div><div></div><div></div></div> <div><div></div><div></div><div></div></div> <div><div></div><div></div><div></div></div> <div><div></div><div></div><div></div></div> <div><div></div><div></div><div></div></div> <div><div></div><div></div><div></div></div> <div><div></div><div></div><div></div></div> <div><div></div><div></div><div></div></div> <div><div></div><div></div><div></div></div> <div><div></div><div></div><div></div></div> <div><div></div><div></div><div></div></div> <div><div></div><div></div><div></div></div> <div><div></div><div></div><div></div></div> <div><div></div><div></div><div></div></div> <div><div></div><div></div><div></div></div> <div><div></div><div></div><div></div></div> <div><div></div><div></div><div></div></div> <div><div></div><div></div><div></div></div> <div><div></div><div></div><div></div></div> <div><div></div><div></div><div></div></div> <div><div></div><div></div><div></div></div> <div><div></div><div></div><div></div></div> <div><div></div><div></div><div></div></div> <div><div></div><div></div><div></div></div> <div><div></div><div></div><div></div></div> <div><div></div><div></div><div></div></div> <div><div></div><div></div><div></div></div> <div><div></div><div></div><div></div></div> <div><div></div><div></div><div></div></div> <div><div></div><div></div><div></div></div> <div><div></div><div></div><div></div></div> <div><div></div><div></div><div></div></div> <div><div></div><div></div><div></div></div> <div><div></div><div></div><div></div></div> <div><div></div><div></div><div></div></div> <div><div></div><div></div><div></div></div> <div><div></div><div></div><div></div></div> <div><div></div><div></div><div></div></div> <div><div></div><div></div><div></div></div> <div><div></div><div></div><div></div></div> <div><div></div><div></div><div></div></div> <div><div></div><div></div><div></div></div> <div><div></div><div></div><div></div></div> <div><div></div><div></div><div></div></div> <div><div></div><div></div><div></div></div> <div><div></div><div></div><div></div></div> <div><div></div><div></div><div></div></div> <div><div></div><div></div><div></div></div> <div><div></div><div></div><div></div></div> <div><div></div><div></div><div></div></div> <div><div></div><div></div><div></div></div> <div><div></div><div></div><div></div></div> <div><div></div><div></div><div></div></div> <div><div></div><div></div><div></div></div> <div><div></div><div></div><div></div></div> <div><div></div><div></div><div></div></div> <div><div></div><div></div><div></div></div> <div><div></div><div></div><div></div></div> <div><div></div><div></div><div></div></div> <div><div></div><div></div><div></div></div> <div><div></div><div></div><div></div></div> <div><div></div><div></div><div></div></div> <div><div></div><div></div><div></div></div> <div><div></div><div></div><div></div></div> <div><div></div><div></div><div></div></div> <div><div></div><div></div><div></div></div> <div><div></div><div></div><div></div></div> <div><div></div><div></div><div></div></div> <div><div></div><div></div><div></div></div> <div><div></div><div></div><div></div></div> <div><div></div><div></div><div></div></div> <div><div></div><div></div><div></div></div> <div><div></div><div></div><div></div></div> <div><div></div><div></div><div></div></div> <div><div></div><div></div><div></div></div> <div><div></div><div></div><div></div></div> <div><div></div><div></div><div></div></div> <div><div></div><div></div><div></div></div> <div><div></div><div></div><div></div></div> <div><div></div><div></div><div></div></div> <div><div></div><div></div><div></div></div> <div><div></div><div></div><div></div></div> <div><div></div><div></div><div></div></div> <div><div></div><div></div><div></div></div> <div><div></div><div></div><div></div></div> <div><div></div><div></div><div></div></div> <div><div></div><div></div><div></div></div> <div><div></div><div></div><div></div></div> <div><div></div><div></div><div></div></div> <div><div></div><div></div><div></div></div> <div><div></div><div></div><div></div></div> <div><div></div><div></div><div></div></div> <div><div></div><div></div><div></div></div> <div><div></div><div></div><div></div></div> <div><div></div><div></div><div></div></div> <div><div></div><div></div><div></div></div> <div><div></div><div></div><div></div></div> <div><div></div><div></div><div></div></div> <div><div></div><div></div><div></div></div> <div><div></div><div></div><div></div></div> <div><div></div><div></div><div></div></div> <div><div></div><div></div><div></div></div> <div><div></div><div></div><div></div></div> <div><div></div><div></div><div></div></div> <div><div></div><div></div><div></div></div> <div><div></div><div></div><div></div></div> <div><div></div><div></div><div></div></div> <div><div></div><div></div><div></div></div> <div><div></div><div></div><div></div></div> <div><div></div><div></div><div></div></div> <div><div></div><div></div><div></div></div> <div><div></div><div></div><div></div></div> <div><div></div><div></div><div></div></div> <div><div></div><div></div><div></div></div> <div><div></div><div></div><div></div></div> <div><div></div><div></div><div></div></div> <div><div></div><div></div><div></div></div> <div><div></div><div></div><div></div></div> <div><div></div><div></div><div></div></div> <div><div></div><div></div><div></div></div> <div><div></div><div></div><div></div></div> <div><div></div><div></div><div></div></div> <div><div></div><div></div><div></div></div> <div><div></div><div></div><div></div></div> <div><div></div><div></div><div></div></div> <div><div></div><div></div><div></div></div> <div><div></div><div></div><div></div></div> <div><div></div><div></div><div></div></div> <div><div></div><div></div><div></div></div> <div><div></div><div></div><div></div></div> <div><div></div><div></div><div></div></div> <div><div></div><div></div><div></div></div> <div><div></div><div></div><div></div></div> <div><div></div><div></div><div></div></div> <div><div></div><div></div><div></div></div> <div><div></div><div></div><div></div></div> <div><div></div><div></div><div></div></div> <div><div></div><div></div><div></div></div> <div><div></div><div></div><div></div></div> <div><div></div><div></div><div></div></div> <div><div></div><div></div><div></div></div> <div><div></div><div></div><div></div></div> <div><div></div><div></div><div></div></div> <div><div></div><div></div><div></div></div> <div><div></div><div></div><div></div></div> <div><div></div><div></div><div></div></div> <div><div></div><div></div><div></div></div> <div><div></div><div></div><div></div></div> <div><div></div><div></div><div></div></div> <div><div></div><div></div><div></div></div> <div><div></div><div></div><div></div></div> <div><div></div><div></div><div></div></div> <div><div></div><div></div><div></div></div> <div><div></div><div></div><div></div></div> <div><div></div><div></div><div></div></div> <div><div></div><div></div><div></div></div> <div><div></div><div></div><div></div></div> <div><div></div><div></div><div></div></div> <div><div></div><div></div><div></div></div> <div><div></div><div></div><div></div></div> <div><div></div><div></div><div></div></div> <div><div></div><div></div><div></div></div> <div><div></div><div></div><div></div></div> <div><div></div><div></div><div></div></div> <div><div></div><div></div><div></div></div> <div><div></div><div></div><div></div></div> <div><div></div><div></div><div></div></div> <div><div></div><div></div><div></div></div> <div><div></div><div></div><div></div></div> <div><div></div><div></div><div></div></div> <div><div></div><div></div><div></div></div> <div><div></div><div></div><div></div></div> <div><div></div><div></div><div></div></div> <div><div></div><div></div><div></div></div> <div><div></div><div></div><div></div></div> <div><div></div><div></div><div></div></div> <div><div></div><div></div><div></div></div> <div><div></div><div></div><div></div></div> <div><div></div><div></div><div></div></div> <div><div></div><div></div><div></div></div> <div><div></div><div></div><div></div></div> <div><div></div><div></div><div></div></div> <div><div></div><div></div><div></div></div> <div><div></div><div></div><div></div></div> <div><div></div><div></div><div></div></div> <div><div></div><div></div><div></div></div> <div><div></div><div></div><div></div></div> <div><div></div><div></div><div></div></div> <div><div></div><div></div><div></div></div> <div><div></div><div></div><div></div></div> <div><div></div><div></div><div></div></div> <div><div></div><div></div><div></div></div> <div><div></div><div></div><div></div></div> <div><div></div><div></div><div></div></div> <div><div></div><div></div><div></div></div> <div><div></div><div></div><div></div></div> <div><div></div><div></div><div></div></div> <div><div></div><div></div><div></div></div> <div><div></div><div></div><div></div></div> <div><div></div><div></div><div></div></div> <div><div></div><div></div><div></div></div> <div><div></div><div></div><div></div></div> <div><div></div><div></div><div></div></div> <div><div></div><div></div><div></div></div> <div><div></div><div></div><div></div></div> <div><div></div><div></div><div></div></div> <div><div></div><div></div><div></div></div> <div><div></div><div></div><div></div></div> <div><div></div><div></div><div></div></div> <div><div></div><div></div><div></div></div> <div><div></div><div></div><div></div></div> <div><div></div><div></div><div></div></div> <div><div></div><div></div><div></div></div> <div><div></div><div></div><div></div></div> <div><div></div><div></div><div></div></div> <div><div></div><div></div><div></div></div> <div><div></div><div></div><div></div></div> <div><div></div><div></div><div></div></div> <div><div></div><div></div><div></div></div> <div><div></div><div></div><div></div></div> <div><div></div><div></div><div></div></div> <div><div></div><div></div><div></div></div> <div><div></div><div></div><div></div></div> <div><div></div><div></div><div></div></div> <div><div></div><div></div><div></div></div> <div><div></div><div></div><div></div></div> <div><div></div><div></div><div></div></div> <div><div></div><div></div><div></div></div> <div><div></div><div></div><div></div></div> <div><div></div><div></div><div></div></div> <div><div></div><div></div><div></div></div> <div><div></div><div></div><div></div></div> <div><div></div><div></div><div></div></div> <div><div></div><div></div><div></div></div> <div><div></div><div></div><div></div></div> <div><div></div><div></div><div>&lt;/</div></div>
--	--	------------------------	------------------------	---



#	AREA/ROOM NUMBER	DEFICIENCY	SOLUTION
10	4D132	Missing fire damper in shaft wall	Install a fire damper
11	C4A1/C4C6	Exit access from the OR corridor is magnetically locked without the proper means to de-energize the magnet.	Button that controls the magnetic release of the doors is broken. Note the existing power operator button is not approved. Install new buttons so that the magnets can be de-energized and doors opened.
12	4A107A	Fire wall penetrations	Use proper fire stop systems to seal all fire all penetrations. Area located in the OR, seal off passage between Stair #9 and corridor C4A2 when working in this area.
13	C4C1/C4D1	Missing automatic door openers.	Install push button door openers on each side of the door.
		Missing smoke detector within 5 feet of an automatic magnet door.	Install smoke detector no more than 5 ft. from the centerline of the doorway measured along the ceiling and perpendicular to the doorway.
		All smoke detectors must be installed no more than 5 ft. from the centerline of the doorway measured along the ceiling and perpendicular to the doorway.	Verify the distance between the smoke detector and the doorway. If the smoke detector exceeds 5 ft. from the centerline of the doorway, relocate detector to be within the guidelines specified by NFPA 101 7.2.1.8.2 and NFPA 72 17.7.5.6.6.

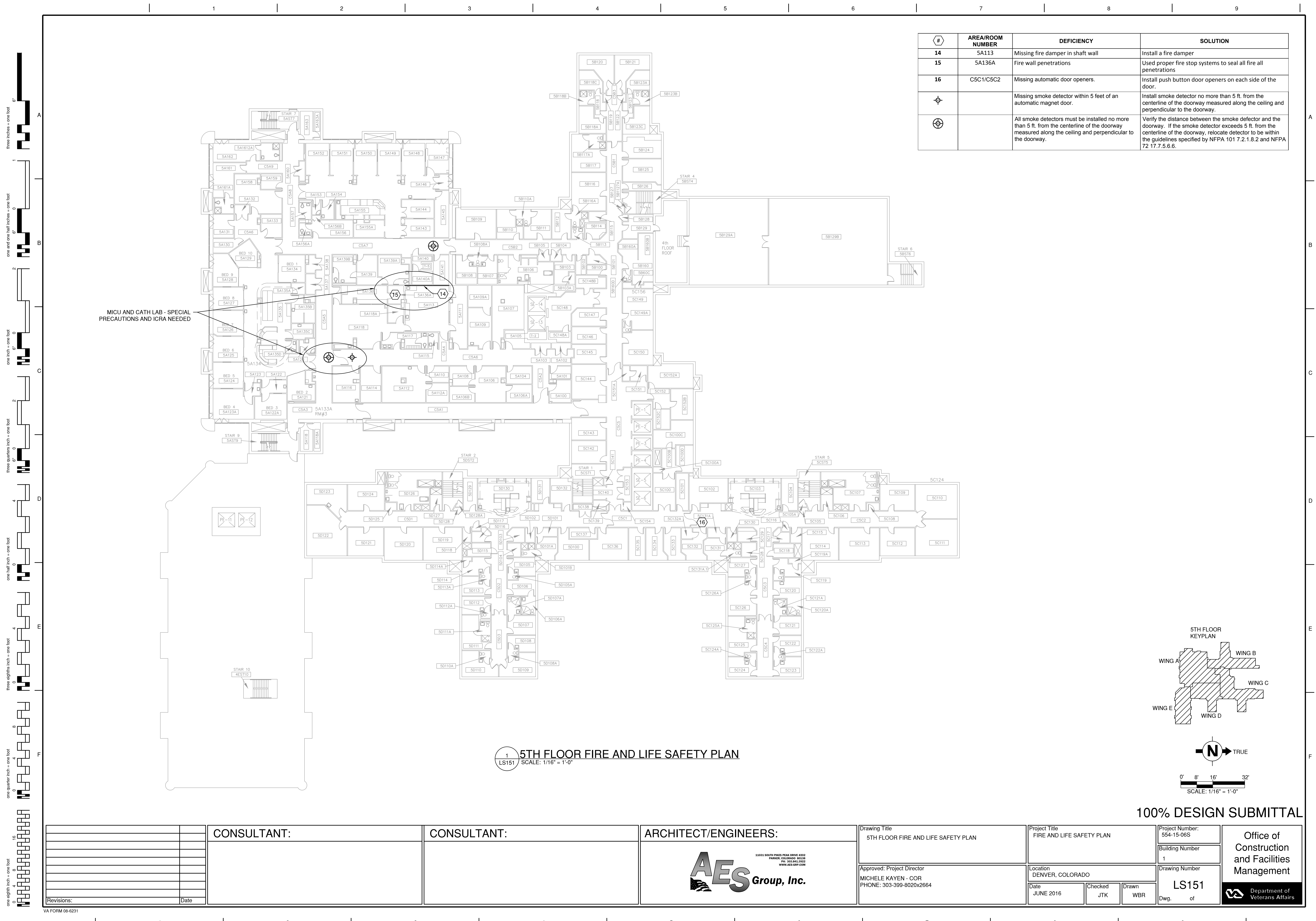



0' 8' 16' 32'  
SCALE: 1/16" = 1'-0"

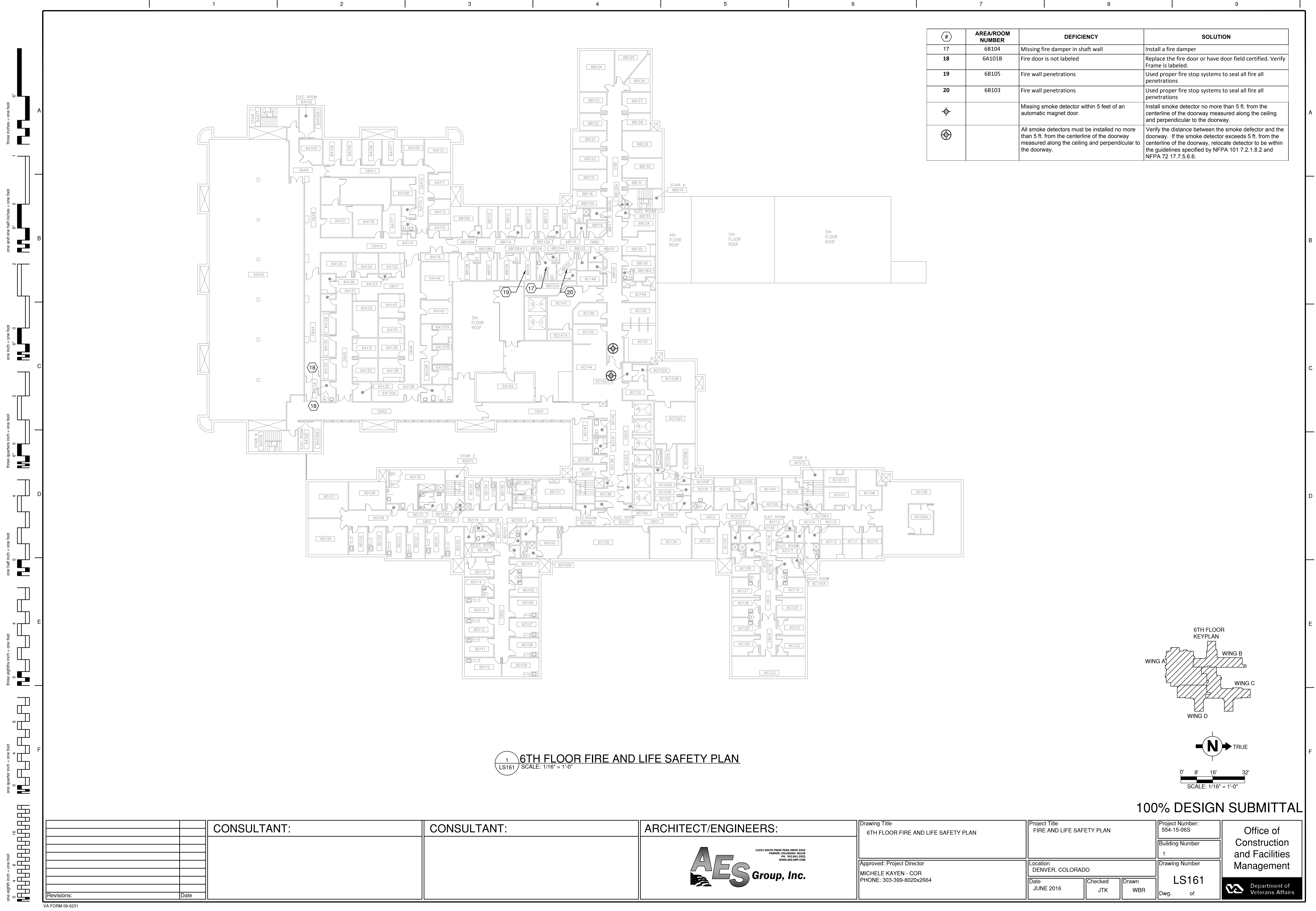
100% DESIGN SUBMITTAL

<b>CONSULTANT:</b>		<b>CONSULTANT:</b>		<b>ARCHITECT/ENGINEERS:</b>		<b>Drawing Title</b> 4TH FLOOR FIRE AND LIFE SAFETY PLAN		<b>Project Title</b> FIRE AND LIFE SAFETY PLAN		<b>Project Number:</b> 554-15-06S		<b>Office of Construction and Facilities Management</b> 	
										<b>Building Number</b> 1			
						<b>Approved: Project Director</b> MICHELE KAYEN - COR PHONE: 303-399-8020x2664		<b>Location</b> DENVER, COLORADO		<b>Drawing Number</b> LS141			
<b>Revisions:</b>		<b>Date</b>						<b>Date</b> JUNE 2016		<b>Checked</b> JTK			<b>Drawn</b> WBR

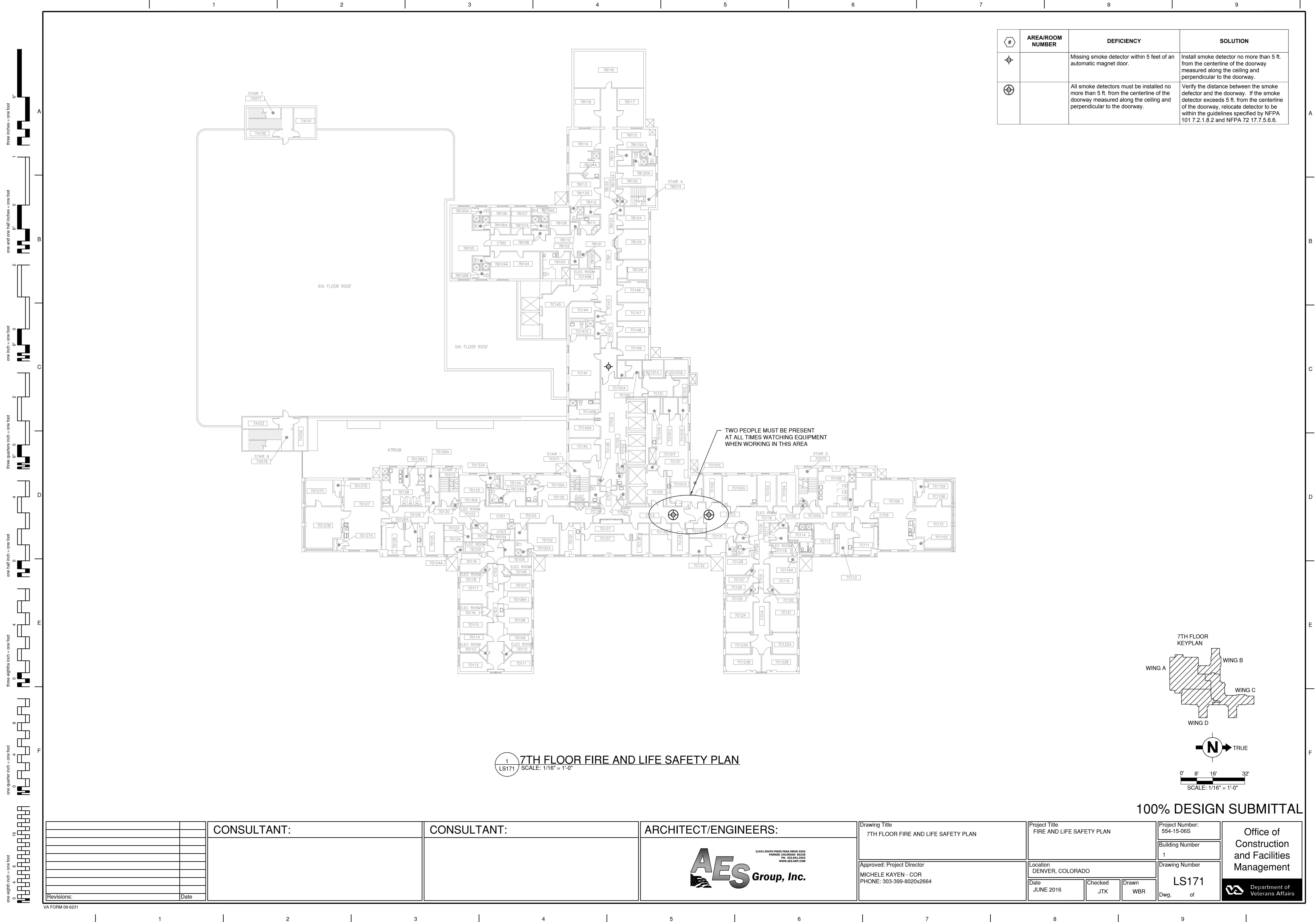




CONSULTANT:		CONSULTANT:		ARCHITECT/ENGINEERS:		Drawing Title 5TH FLOOR FIRE AND LIFE SAFETY PLAN		Project Title FIRE AND LIFE SAFETY PLAN		Project Number: 554-15-06S		Office of Construction and Facilities Management					
										Building Number 1							
						Approved: Project Director MICHELE KAYEN - COR PHONE: 303-399-8020x2664		Location DENVER, COLORADO		Drawing Number LS151							
Revisions:		Date						Date JUNE 2016		Checked JTK		Drawn WBR		Dwg. of		Department of Veterans Affairs	

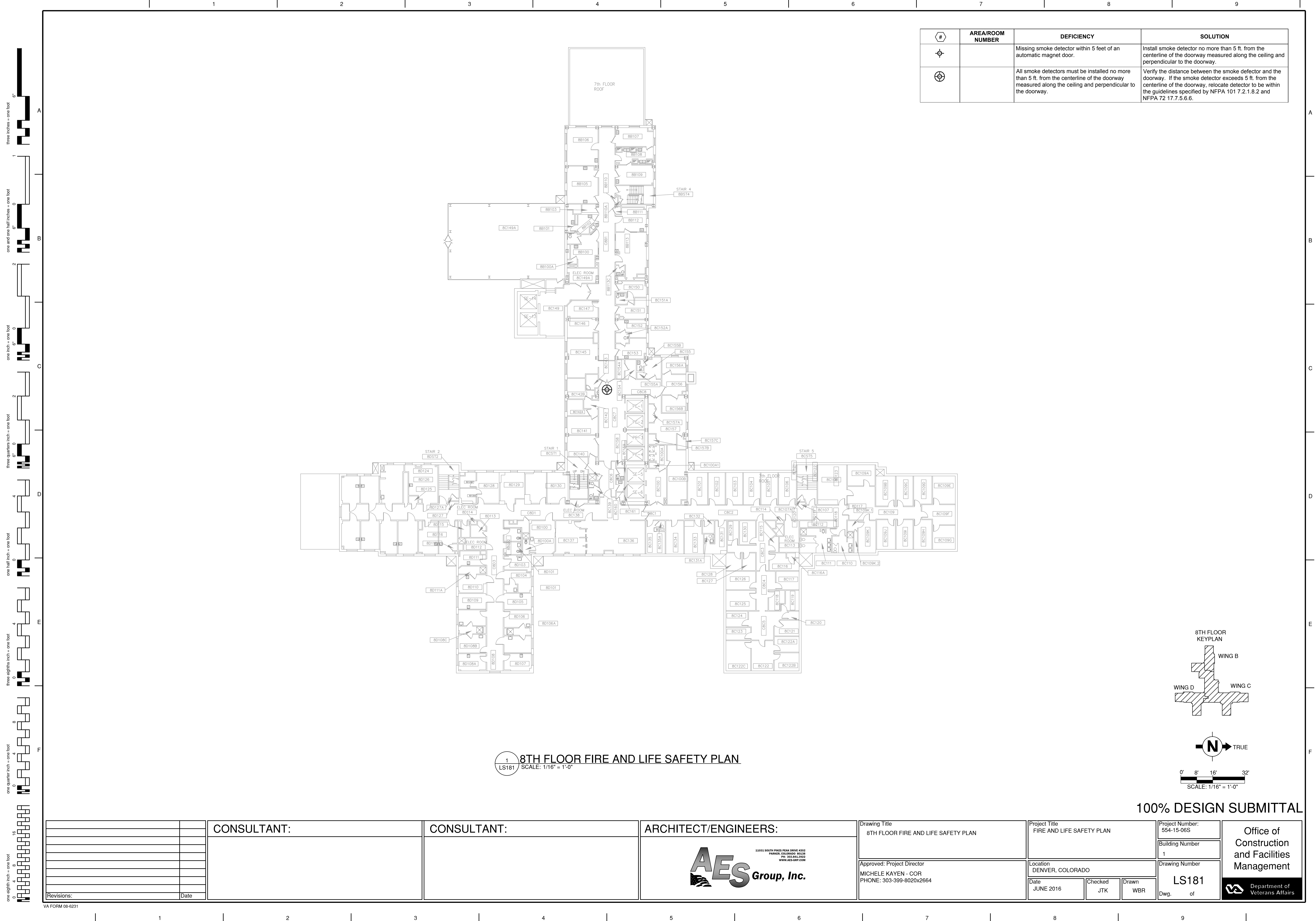




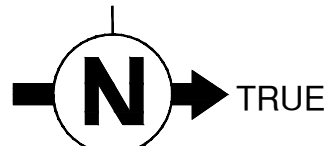
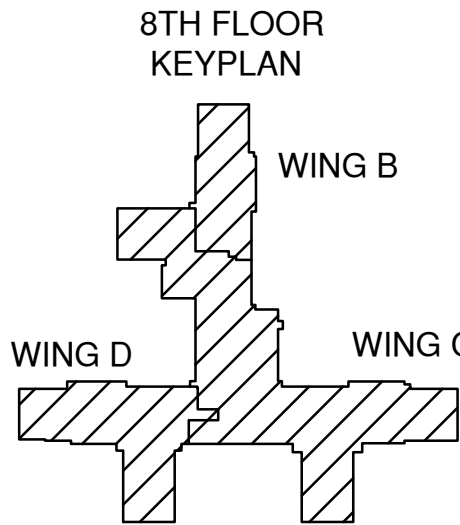


#	AREA/ROOM NUMBER	DEFICIENCY	SOLUTION
⊕		Missing smoke detector within 5 feet of an automatic magnet door.	Install smoke detector no more than 5 ft. from the centerline of the doorway measured along the ceiling and perpendicular to the doorway.
⊕		All smoke detectors must be installed no more than 5 ft. from the centerline of the doorway measured along the ceiling and perpendicular to the doorway.	Verify the distance between the smoke detector and the doorway. If the smoke detector exceeds 5 ft. from the centerline of the doorway, relocate detector to be within the guidelines specified by NFPA 101 7.2.1.8.2 and NFPA 72 17.7.5.6.6.

CONSULTANT:		CONSULTANT:		ARCHITECT/ENGINEERS:		Drawing Title 7TH FLOOR FIRE AND LIFE SAFETY PLAN		Project Title FIRE AND LIFE SAFETY PLAN		Project Number: 554-15-06S		Office of Construction and Facilities Management			
						Approved: Project Director MICHELE KAYEN - COR PHONE: 303-399-8020x2664		Location DENVER, COLORADO		Building Number 1					
										Drawing Number LS171					
Revisions:		Date						Date JUNE 2016		Checked JTK		Drawn WBR		Dwg. of	




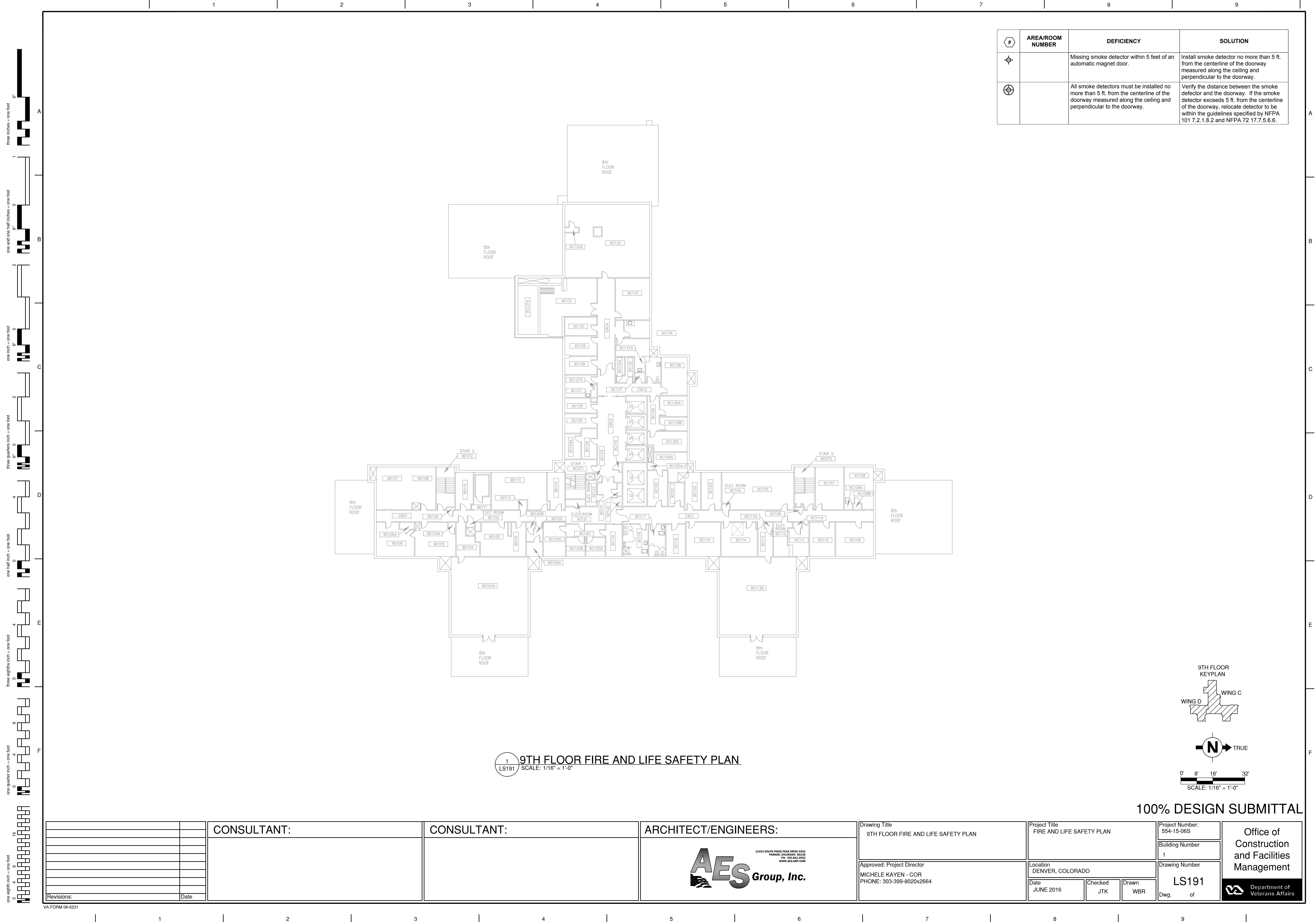
#	AREA/ROOM NUMBER	DEFICIENCY	SOLUTION
1		Missing smoke detector within 5 feet of an automatic magnet door.	Install smoke detector no more than 5 ft. from the centerline of the doorway measured along the ceiling and perpendicular to the doorway.
2		All smoke detectors must be installed no more than 5 ft. from the centerline of the doorway measured along the ceiling and perpendicular to the doorway.	Verify the distance between the smoke detector and the doorway. If the smoke detector exceeds 5 ft. from the centerline of the doorway, relocate detector to be within the guidelines specified by NFPA 101 7.2.1.8.2 and NFPA 72 17.7.5.6.6.



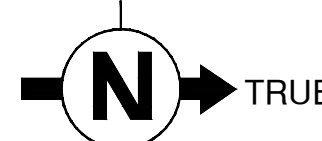
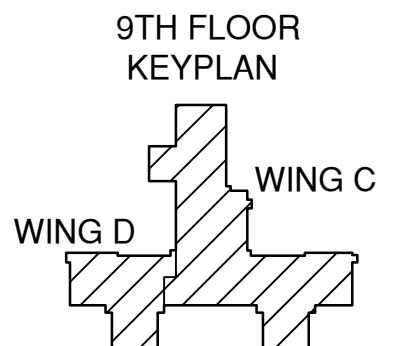
0' 8' 16' 32'  
SCALE: 1/16" = 1'-0"

100% DESIGN SUBMITTAL

		CONSULTANT:		CONSULTANT:		ARCHITECT/ENGINEERS:		Drawing Title 8TH FLOOR FIRE AND LIFE SAFETY PLAN		Project Title FIRE AND LIFE SAFETY PLAN		Project Number: 554-15-06S		Office of Construction and Facilities Management  Department of Veterans Affairs			
												Building Number 1					
								Approved: Project Director MICHELE KAYEN - COR PHONE: 303-399-8020x2664		Location DENVER, COLORADO		Drawing Number LS181					
Revisions:		Date								Date JUNE 2016		Checked JTK		Drawn WBR		Dwg. of	




#	AREA/ROOM NUMBER	DEFICIENCY	SOLUTION
1		Missing smoke detector within 5 feet of an automatic magnet door.	Install smoke detector no more than 5 ft. from the centerline of the doorway measured along the ceiling and perpendicular to the doorway.
2		All smoke detectors must be installed no more than 5 ft. from the centerline of the doorway measured along the ceiling and perpendicular to the doorway.	Verify the distance between the smoke detector and the doorway. If the smoke detector exceeds 5 ft. from the centerline of the doorway, relocate detector to be within the guidelines specified by NFPA 101 7.2.1.8.2 and NFPA 72 17.7.5.6.6.



0' 8' 16' 32'  
SCALE: 1/16" = 1'-0"

100% DESIGN SUBMITTAL

		CONSULTANT:		CONSULTANT:		ARCHITECT/ENGINEERS:		Drawing Title 9TH FLOOR FIRE AND LIFE SAFETY PLAN		Project Title FIRE AND LIFE SAFETY PLAN		Project Number: 554-15-06S		Office of Construction and Facilities Management  Department of Veterans Affairs	
						 11001 SOUTH PIKES PEAK DRIVE #202 PARKER, COLORADO 80138 PH: 303.843.9922 WWW.AES-GP.COM		Approved: Project Director MICHELE KAYEN - COR PHONE: 303-399-8020x2664		Location DENVER, COLORADO		Building Number 1			
				Date JUNE 2016								Checked JTK			
Revisions:		Date										Dwg. of			