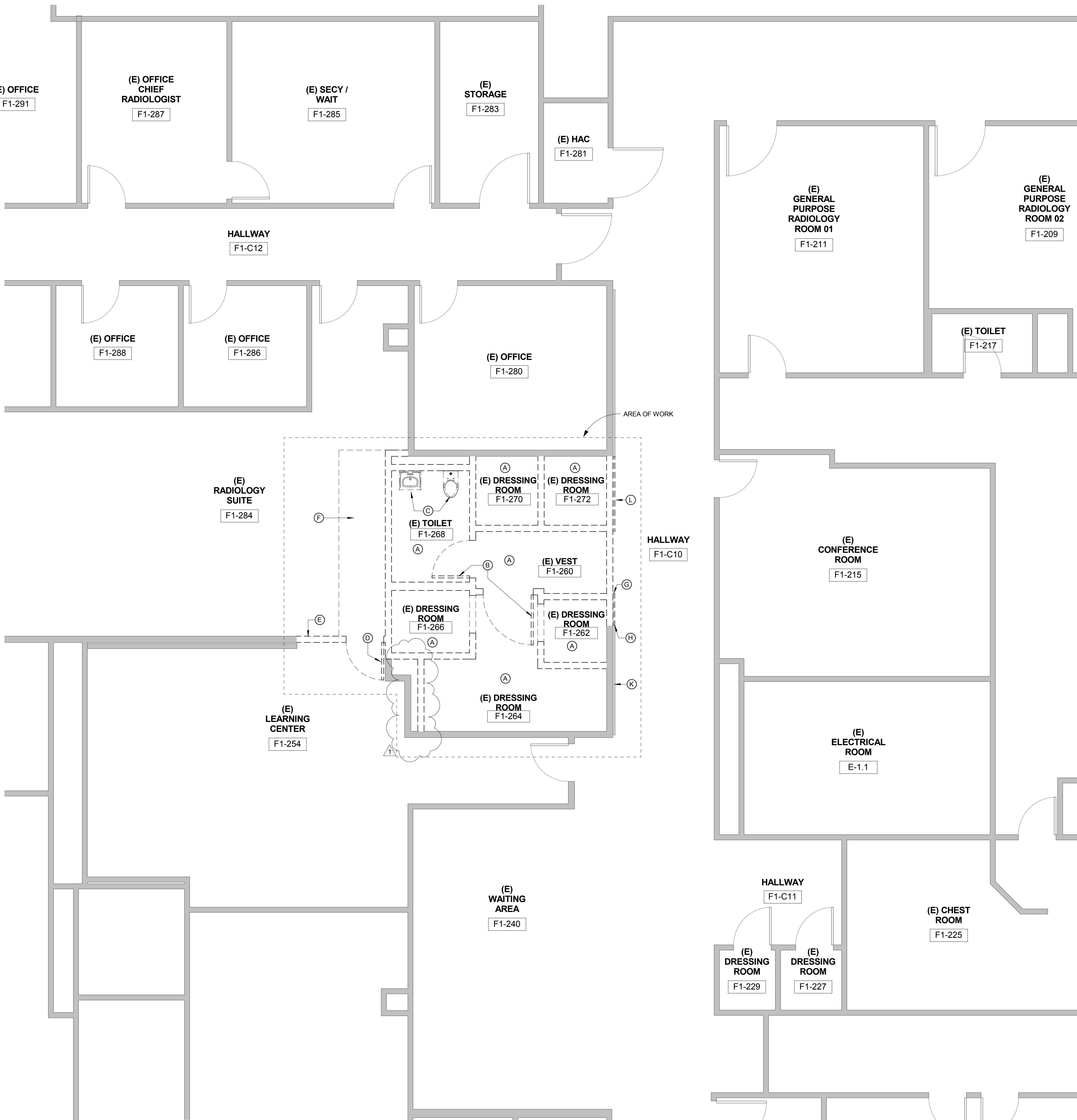


three inches = one foot
one and one half inches = one foot
one inch = one foot
three quarters inch = one foot
three quarters inch = one foot
one half inch = one foot
one half inch = one foot
three eighths inch = one foot
one quarter inch = one foot
one eighth inch = one foot
one eighth inch = one foot



DEMO PLAN KEYNOTES

- (A) REMOVE ALL EXISTING FINISHES FROM FLOORS & WALLS AT THIS LOCATION
- (B) REMOVE EXISTING DOOR, FRAME & HARDWARE
- (C) REMOVE ALL EXISTING PLUMBING FIXTURES, CAP OFF PIPES.
- (D) REMOVE AND SAVE EXISTING DOOR FRAME & HARDWARE FOR NEW LOCATION - SEE FLOOR PLAN
- (E) REMOVE EXISTING WALL FOR RELOCATED DOOR
- (F) REMOVE (E) FLOORING, SEE FLOOR PLAN FOR EXTENT OF REMOVAL
- (G) REMOVE EXISTING BUMPER GUARD BACK SO THERE WILL BE 2" CLEAR BETWEEN DOOR/SIDE LIGHT FRAME & HANDRAIL. RETAIN RETURN FOR REUSE
- (H) REMOVE EXISTING WOOD HANDRAIL BACK SO THERE WILL BE 2" CLEAR BETWEEN DOOR/SIDELIGHT FRAME & HANDRAIL. RETAIN RETURN FOR REUSE
- (J) NOT USED
- (K) EXISTING BUMPER GUARD & HANDRAIL TO REMAIN
- (L) REMOVE EXISTING BUMPER GUARD AND HANDRAIL

DEMO PLAN SHEET NOTES

- PATCH AND REPAIR ALL SURFACES DAMAGED IN AREA AFFECTED BY WORK TO MATCH (E) ADJACENT CONSTRUCTION, UNLESS OTHERWISE NOTED.
- PATCH AND REPAIR WALLS WHERE OUTLETS ARE MOVED. SEE ELECTRICAL DRAWINGS FOR REMOVED OUTLETS.
- REMOVE ALL EXISTING CORNER GUARDS.

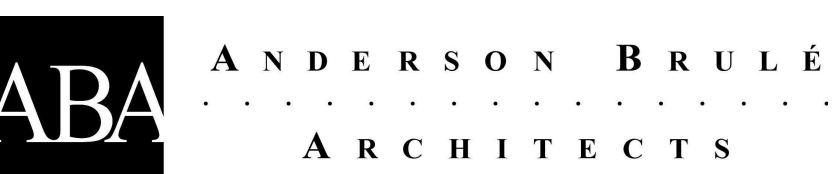
DEMO PLAN LEGEND

- WALLS TO BE REMOVED
- EXISTING WALLS

1 DEMO PLAN

ADDENDUM 1	08/29/16
Revisions:	Date

CONSULTANTS:

ARCHITECTS/ENGINEERS:


CONSTRUCTION DOCUMENTS

Drawing Title
DEMOLITION FLOOR PLAN
Approved: Project Director

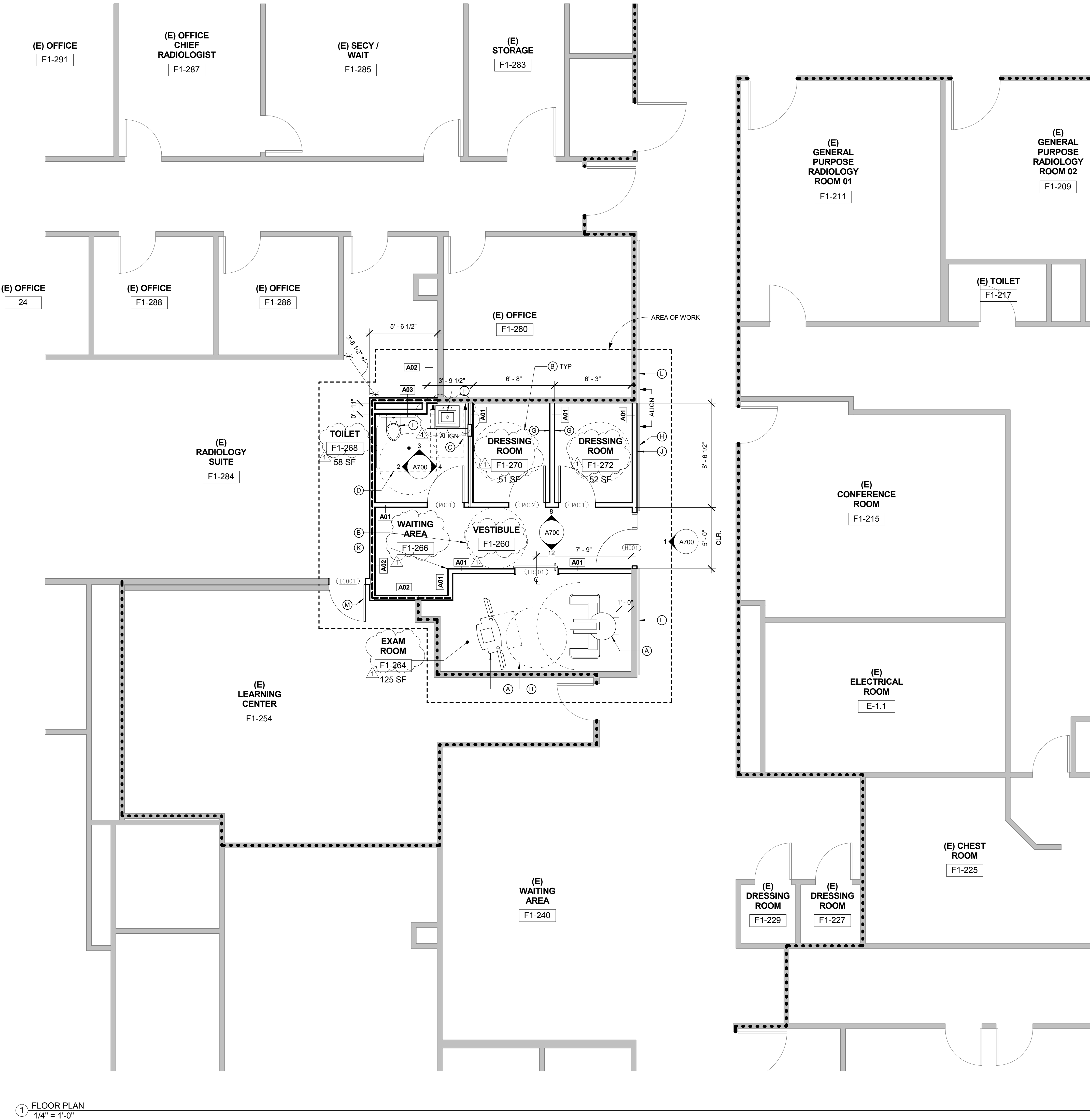
Project Title
Radiology Renovation for Mammography
Location
Palo Alto, CA
Date
7/19/2016

Project Number
640-15-129
Building Number
100
Drawing Number
A161
Dwg. of

Office of Construction and Facilities Management


ADDENDUM 1
08/29/16

three inches = one foot
one and one half inches = one foot
one inch = one foot
three quarters inch = one foot
one half inch = one foot
three eighths inch = one foot
one quarter inch = one foot
one eighth inch = one foot



FLOOR PLAN KEYNOTES

- A EQUIPMENT: OWNER FURNISHED, CONTRACTOR INSTALLED. FOR EQUIP ANCHORAGE, SEE DETAILS 16 / A802, 17 / A802, 18 / A802
- B 5" TURNING RADIUS
- C 30" x 48" CLEARANCE
- D 56" x 60" CLEARANCE
- E SINK, SEE PLUMBING DRAWINGS
- F TOILET, SEE PLUMBING DRAWINGS
- G MIRROR 30" x 72", HEAD HT. 7'-0"
- H WOOD HANDRAIL TO MATCH EXISTING. HOLD BACK 2" FROM DOOR AND SIDELIGHT FRAME, PROVIDE BRACKET & BACKING PLATE
- J BUMPER GUARD - HOLD BACK 2" FROM DOOR AND SIDELIGHT FRAME. PROVIDE BRACKET AND BACKING PLATE
- K SURFACE MOUNTED CORNER GUARD: MATCH EXISTING, SEE DETAIL 14/A801
- L EXISTING BUMPER GUARD AND HANDRAIL TO REMAIN
- M RELOCATED DOOR, HARDWARE, & FRAME

FLOOR PLAN SHEET NOTES

- NEW AND EXISTING OUTLETS, JACK COVER PLATES, AND ELECTRICAL CONTROL DEVICES TO BE WHITE COLOR, U.N.O.
- REFER TO DETAILS ON SHEET A802 FOR TYPICAL BRACING AT NEW PARTITIONS
- PROVIDE BACKING AND BRACING IN PARTITIONS FOR EQUIPMENT PER 6/A803.
- REFER TO SHEET A803 FOR TYPICAL PARTITION DETAILS.
- CUT AND FIT COMPONENTS AS REQUIRED TO ALTER EXISTING WORK FOR INSTALLATION OF NEW WORK. PATCH DAMAGED AREAS TO MATCH ADJACENT MATERIALS AND FINISHES.
- REMOVE AND CLEAN ANY ITEMS TO BE RE-USED PRIOR TO RE-INSTALLATION. STAGGER JOINTS IN GYP. BD. SHEETS 24" ON EACH SIDE AND ON OPPOSITE SIDES AT ALL ACOUSTICAL PARTITIONS.
-

FLOOR PLAN LEGEND

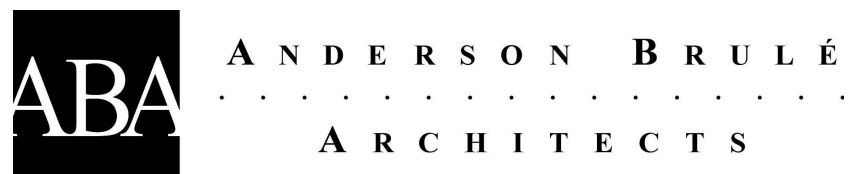
- EXISTING WALLS
- NEW WALLS
- EXISTING 1-HR FIRE BARRIER WALL PER DRAWING SET DATED FEB. 1, 2013 BY SMITHGROUP PROJECT NUMBER 640-424.
- 1-HR FIRE BARRIER WALL

ADDENDUM 1
08/29/16

ADDENDUM 1	08/29/16
Revisions:	Date

CONSULTANTS:

ARCHITECTS/ENGINEERS:



CONSTRUCTION
DOCUMENTS

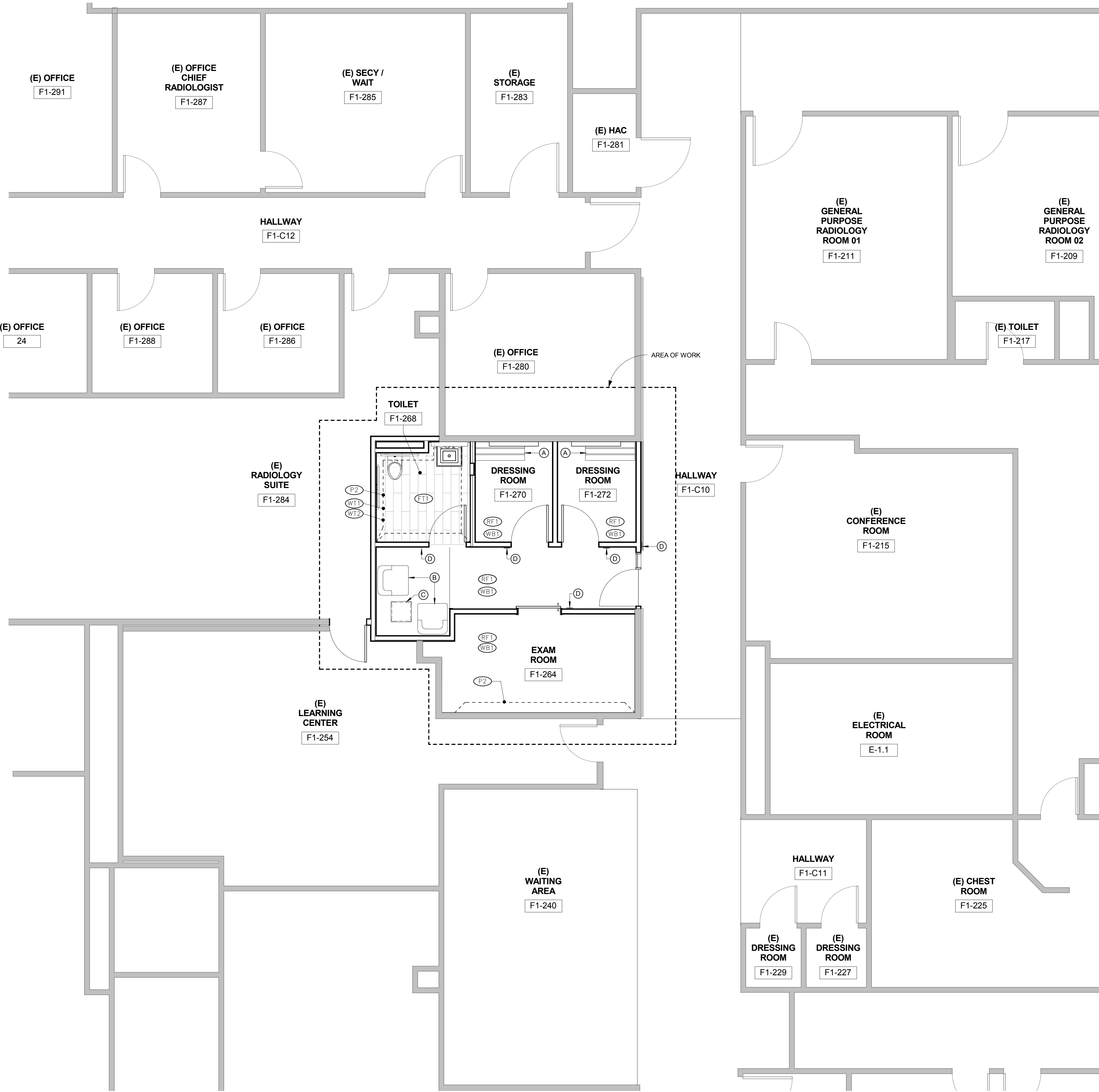
Drawing Title	FLOOR PLAN
Approved: Project Director	

Project Title	Radiology Renovation for Mammography
Location	Palo Alto, CA
Date	7/19/2016
Checked	
Drawn	

Project Number	640-15-129
Building Number	100
Drawing Number	A201
Dwg. of	



three inches = one foot
one and one half inches = one foot
one inch = one foot
three quarters inch = one foot
one half inch = one foot
three eighths inch = one foot
one quarter inch = one foot
one eighth inch = one foot



1 FINISH, SIGNAGE & FURNITURE PLAN
1/4" = 1'-0"

FINISH PLAN KEYNOTES

- (A) CHANGING ROOM BENCH, TBD
- (B) WAITING AREA CHAIRS, TBD
- (C) WAITING AREA TABLE, TBD
- (D) SIGNAGE AT THIS LOCATION - SEE SHEET A700 FOR TYPE AND LOCATION OF SIGN

FINISH PLAN SHEET NOTES

- CENTER THE TRANSITION OF FLOORS OCCURRING IN DOOR OPENINGS UNDER THE CENTER OF THE DOOR IN CLOSED POSITION, U.N.O.
- TILE JOINTS ALIGN ALL JOINTS IN FLOOR & WALL TILES WHERE PARTITIONS AND FLOORS MEET. CENTER THE TILES IN THE ROOMS WITH NO START INDICATED ON PLAN. NO TILES AT THE ROOM PERIMETER SHALL BE LESS THAN HALF THE WIDTH OF THE TILE.
- ALL PARTITIONS TO RECEIVE SEMI-GLOSS OR GLOSS PAINT TO BE FINISHED TO LEVEL 5 FINISH PER GYPSUM ASSOCIATION STD. GA-216, U.N.O. ALL OTHER PARTITIONS TO BE LEVEL 4 FINISH PER STD. GA-216.

FINISH PLAN LEGEND

- (RF1) RUBBER FLOOR, MANNINGTON, COLORFIELDS, THERMOSET RUBBER, TYPE TS, COLOR: 894 SANDBOX
- (WB1) 6" COVED RUBBER WALL BASE, JOHNSONITE, COLOR: 31-ZEPHYR
- (TT1) FLOOR TILE, CROSSVILLE, SPEAKEASY, 8"x36", COLOR: AV281 SIDECAR WITH CUSTOM BUILDING PRODUCTS GROUT, COLOR: #09 NATURAL GRAY
- (WT1) WALL TILE, FIELD, DAL TILE, MODERN DIMENSIONS, 4 1/4"x8 1/2" COLOR: 775 MATTE BISCUIT, WITH CUSTOM BUILDING PRODUCTS GROUT, COLOR: 333 ALABASTER, SEE ELEVATIONS, SHEET A700
- (WT2) WALL TILE, ACCENT, DAL TILE, COLOR WAVE CLASSIC BLENDS, 2X1 BRICK-JOINT MOSAIC, COLOR: WILLOW WATERS CW21, WITH CUSTOM BUILDING PRODUCTS GROUT, COLOR: #09 NATURAL GRAY, SEE ELEVATIONS, SHEET A700
- (SS1) SOLID SURFACE COUNTERTOP, CORIAN, COLOR: RICE PAPER
- (P1) ALL WALLS AND CEILING IN TOILET ROOM ARE KELLY MOORE, SWISS COFFEE, U.O.N.
- (P2) ACCENT PAINT, KELLY MOORE, KM5801 WINTER MORNING MIST

ADDENDUM 1
08/29/16

		CONSULTANTS:	<div>ARCHITECTS/ENGINEERS:</div> <div><div>ABA</div><div>ANDERSON BRULÉ ARCHITECTS</div></div>	<div>CONSTRUCTION DOCUMENTS</div>	Drawing Title		Project Title		Project Number		<div>Office of Construction and Facilities Management</div> <div>VA PAHCS</div> <div><div>Veterans Affairs</div><div>Palo Alto Health Care System</div></div>			
					FINISH, SIGNANGE, & FURNITURE PLAN		Radiology Renovation for Mammography		640-15-129					
					Approved: Project Director		Location		Building Number					
							Palo Alto, CA		100					
ADDENDUM 1		08/29/16							Date			Drawing Number		A230
Revisions:			Date		7/19/2016		Checked		Drawn		Dwg. of			

three inches = one foot
one and one half inches = one foot
one inch = one foot
three quarters inch = one foot
one half inch = one foot
three eighths inch = one foot
one quarter inch = one foot
one eighth inch = one foot



1
BUILDING FIRST FLOOR REFLECTED
CEILING PLAN
1/4" = 1'-0"

REFLECTED CEILING PLAN KEYNOTES

- (A) WALL MOUNTED DIRECT LED LIGHT FIXTURE ABOVE THE MIRROR
- (B) WALL MOUNTED INDIRECT/DIRECT LED LIGHT FIXTURE
- (C) GYPBOARD SOFFIT
- (D) PERIMETER CEILING ANGLE FOR EXISTING ACT

REFLECTED CEILING PLAN SHEET NOTES

1. REFER TO THE ARCHITECTURAL REFLECTED CEILING PLAN FOR:
2. -THE GENERAL TYPE AND SPECIFIC LOCATION OF LIGHT FIXTURES
3. -THE LOCATION OF EXIT SIGNS
4. -THE LOCATION OF WALL-MTD. LIGHTING FIXTURES +60" AFF OR ABOVE
5. PREPARE AND SUBMIT THE FOLLOWING DRAWINGS TO THE ARCHITECT FOR REVIEW AND COORDINATION PRIOR TO ORDER OR FABRICATION OF MATERIALS AND INSTALLATION OF SYSTEM:
 - HVAC DRAWINGS
 - ELECTRICAL CIRCUITING AND SWITCHING PLANS
 - SPRINKLER DIAGRAMS AND HEAD LOCATION
6. REFER TO DETAIL SHEET A802 FOR SEISMIC BRACING OF NEW AND MODIFIED SUSPENDED CEILINGS.
7. INSTALL THE SUSPENDED CEILING TO BE LEVEL WITHIN A TOLERANCE OF 1/8" IN 12'-0". ANCHORS AS REQUIRED.
8. INSTALL PERIMETER CEILING ANGLE TIGHT TO PARTITION, FREE FROM CURVES, BREAKS, AND OTHER IRREGULARITIES.
9. WHERE ACOUSTICAL TILES ARE REQUIRED TO BE CUT, CUT THE TILES TO MAINSTAIR AND NEAT EDGE.
10. INSTALL NEW SPRINKLER HEADS AND LIGHT FIXTURES AT THE CENTER OF THE ACOUSTICAL CEILING TILE U.N.O.
11. ACOUSTICAL TILES ARE TO BE VINYL FACED AT RESTROOM

REFLECTED CEILING PLAN LEGEND

NOTE: SEE MECHANICAL AND ELECTRICAL DRAWINGS FOR ADDITIONAL INFORMATION

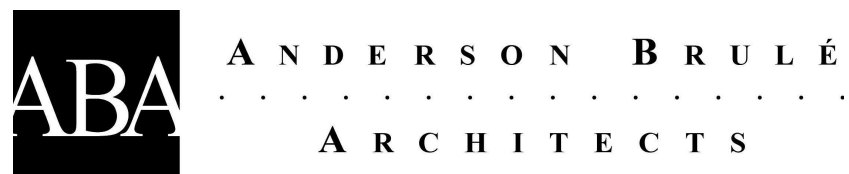
- EXISTING 2' x 2' ACT GRID
- NEW 2' x 2' ACT GRID
- NEW GYP CEILING
- 2X2 LED FIXTURE
- 6" LED DOWNLIGHT
- LED WALL MOUNT DIRECT, 3' LENGTH
- LED WALL MOUNT INDIRECT/DIRECT 4' LENGTH
- CEILING MOUNTED ILLUMINATED EXIT SIGN
- RETURN AIR CEILING DIFFUSER, SEE MECHANICAL DRAWINGS
- SUPPLY AIR CEILING DIFFUSER, SEE MECHANICAL DRAWINGS
- EXHAUST AIR CEILING DIFFUSER, SEE MECHANICAL DRAWINGS

ADDENDUM 1
08/29/16

ADDENDUM 1	08/29/16
Revisions:	Date

CONSULTANTS:

ARCHITECTS/ENGINEERS:



CONSTRUCTION
DOCUMENTS

Drawing Title
REFLECTED CEILING PLAN

Approved: Project Director

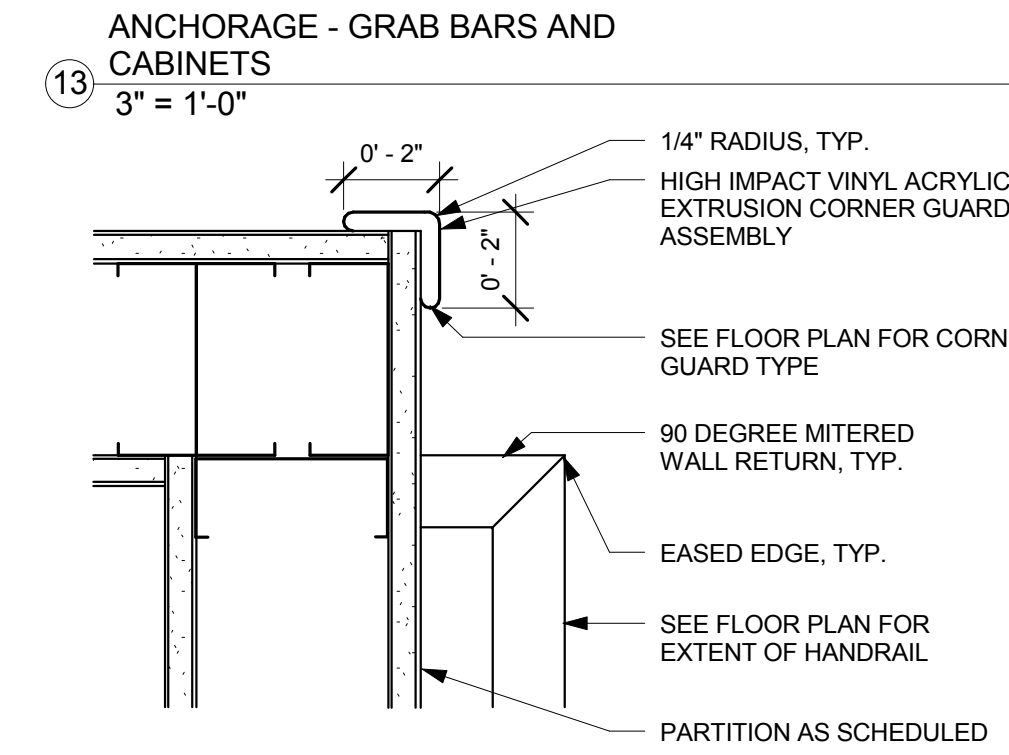
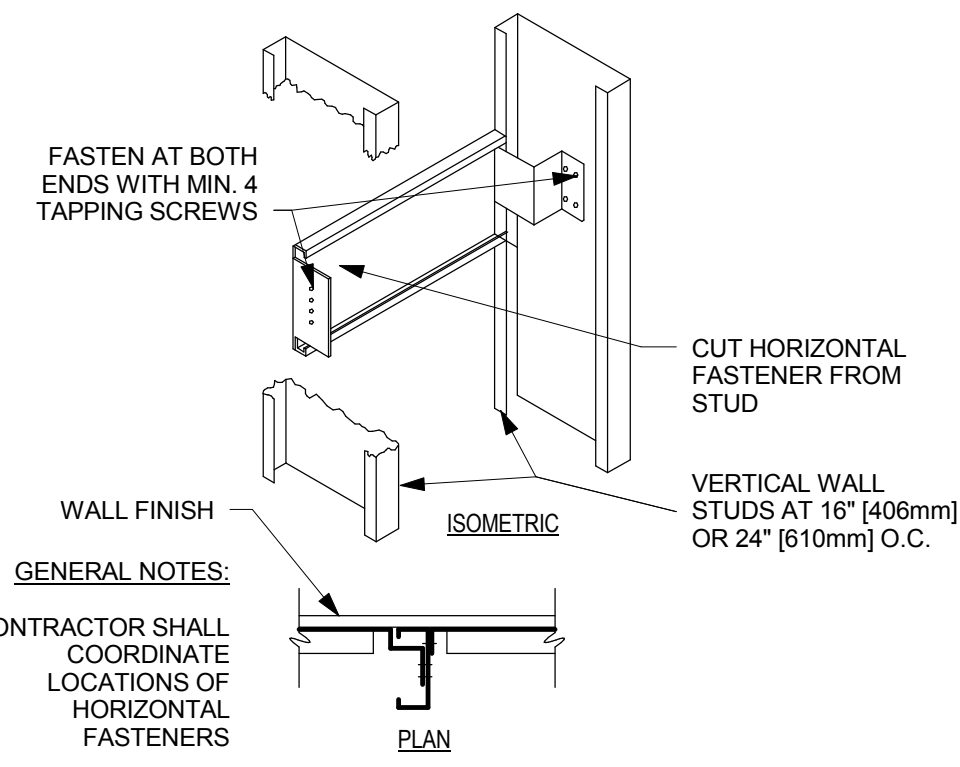
Project Title
Radiology Renovation for
Mammography

Location
Palo Alto, CA
Date
7/19/2016

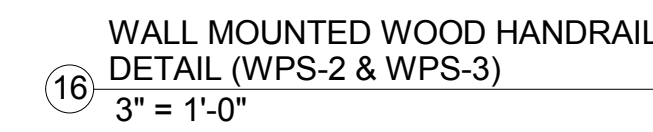
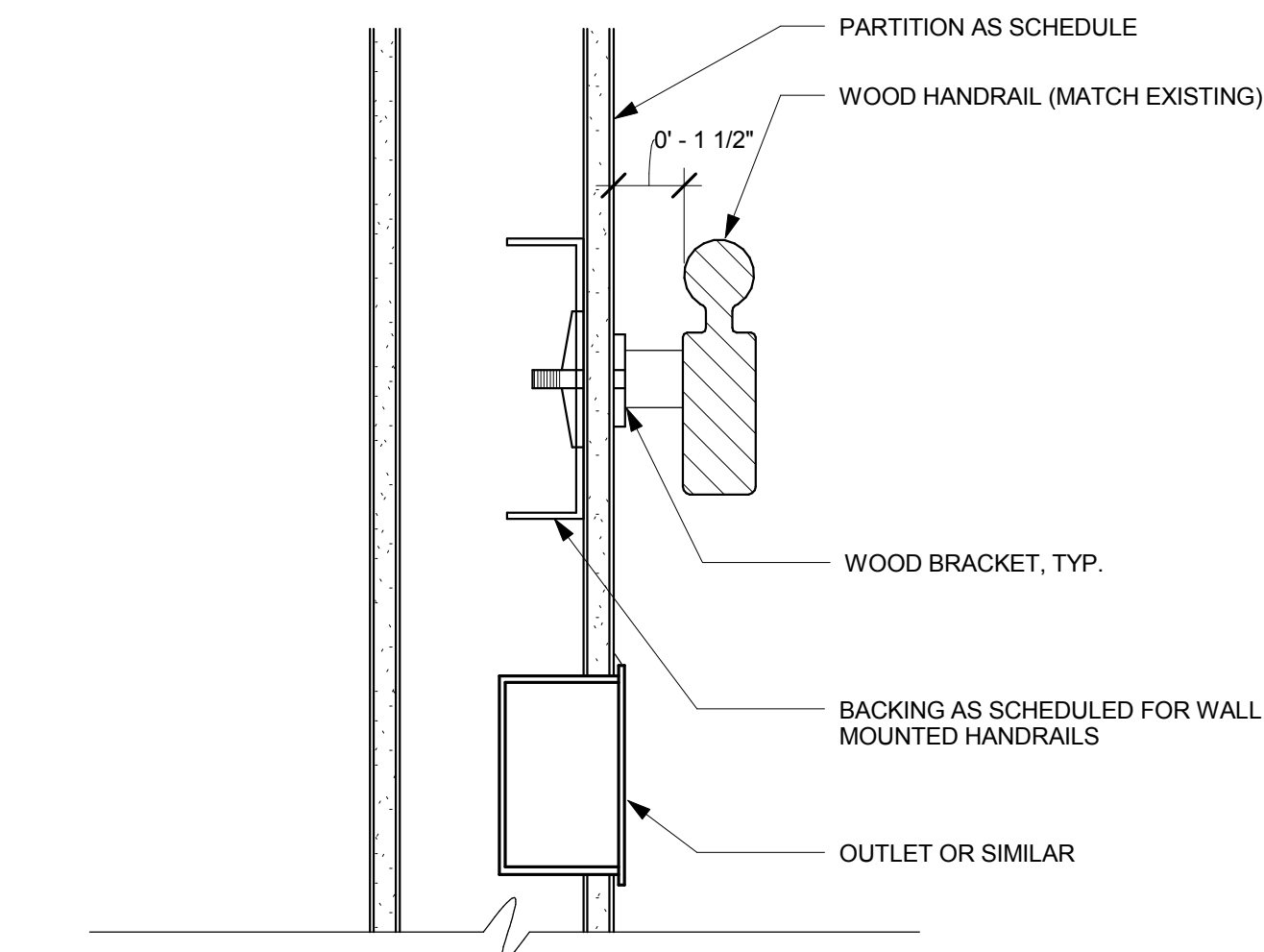
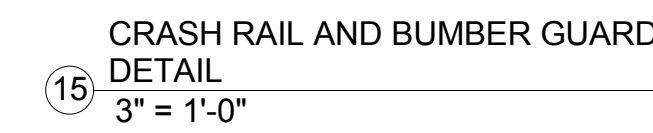
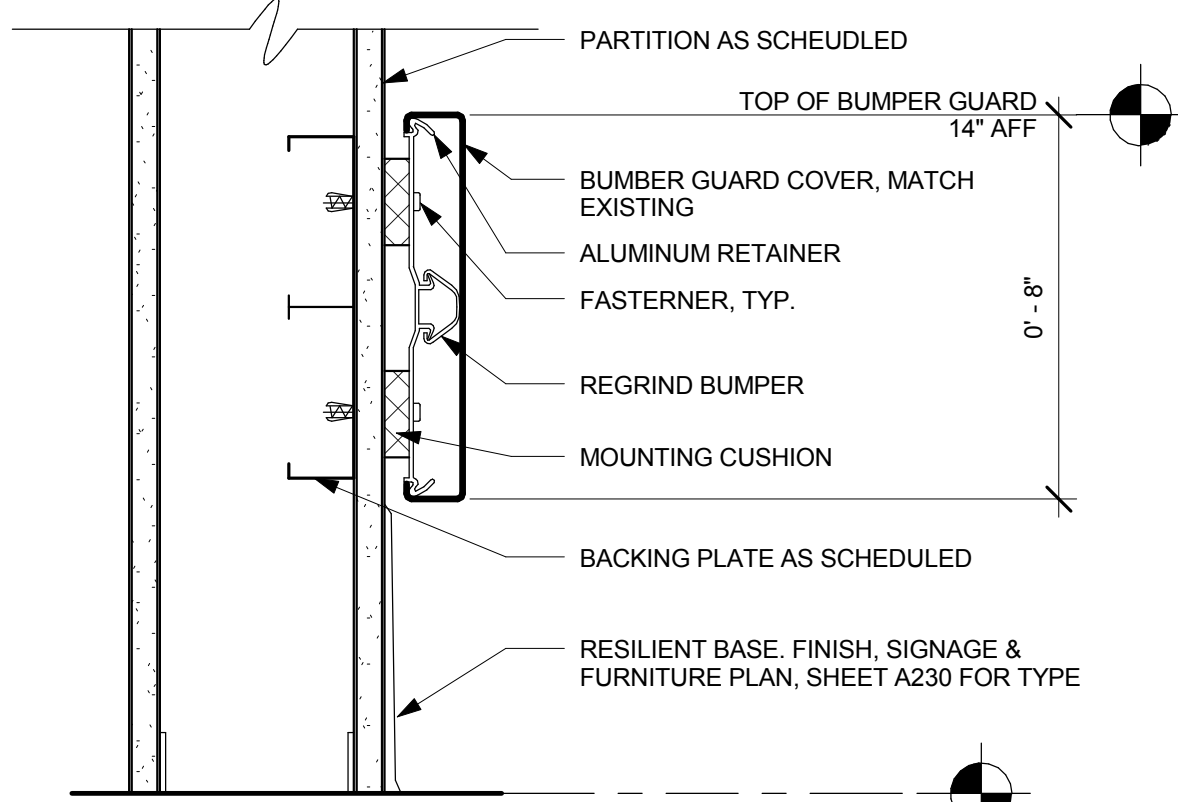
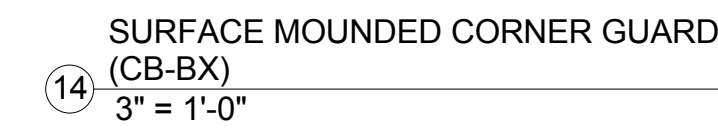
Project Number
640-15-129
Building Number
100
Drawing Number
A300
Dwg. of

Office of
Construction
and Facilities
Management
VA PAHCS
Veterans Affairs Palo Alto Health Care System

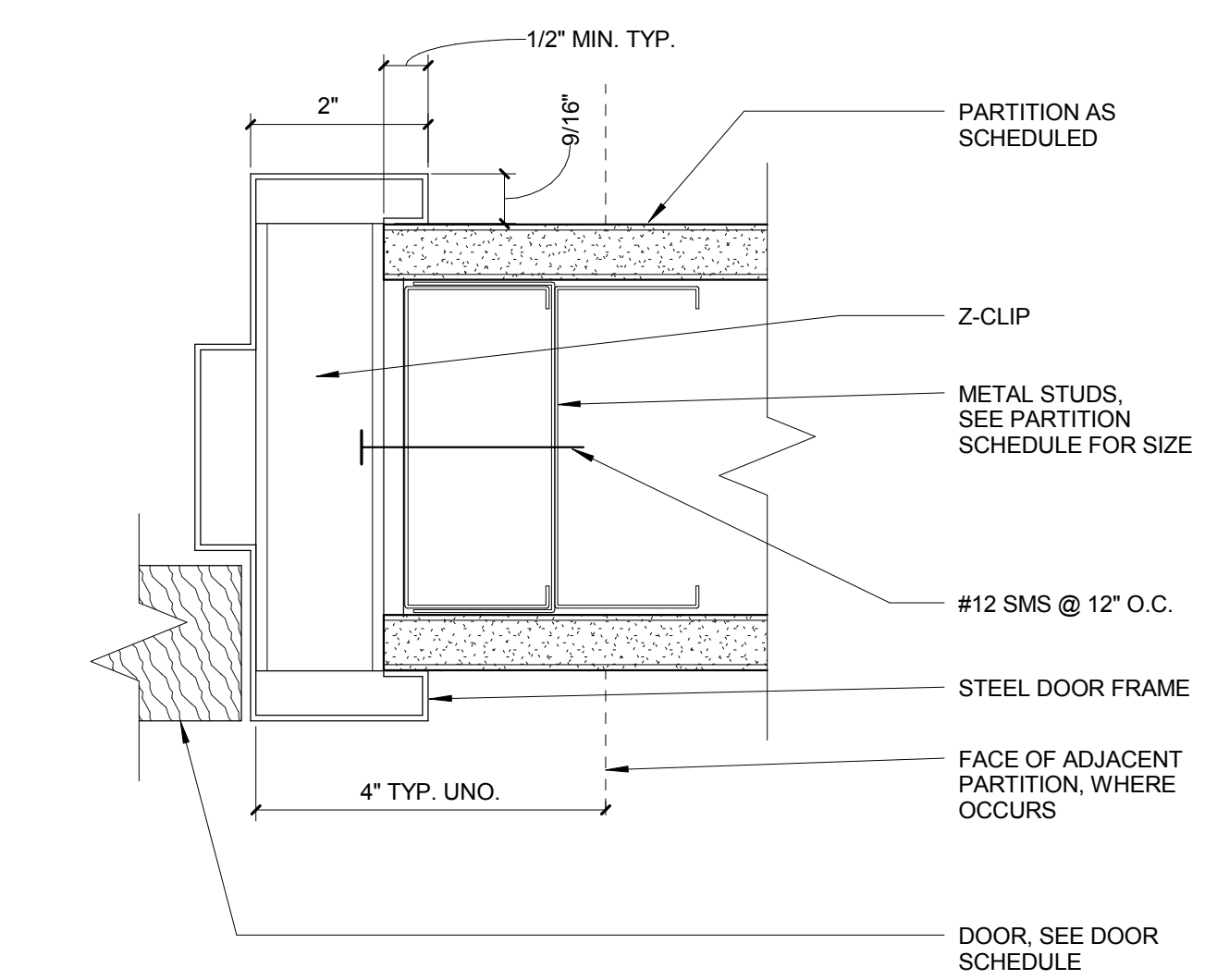
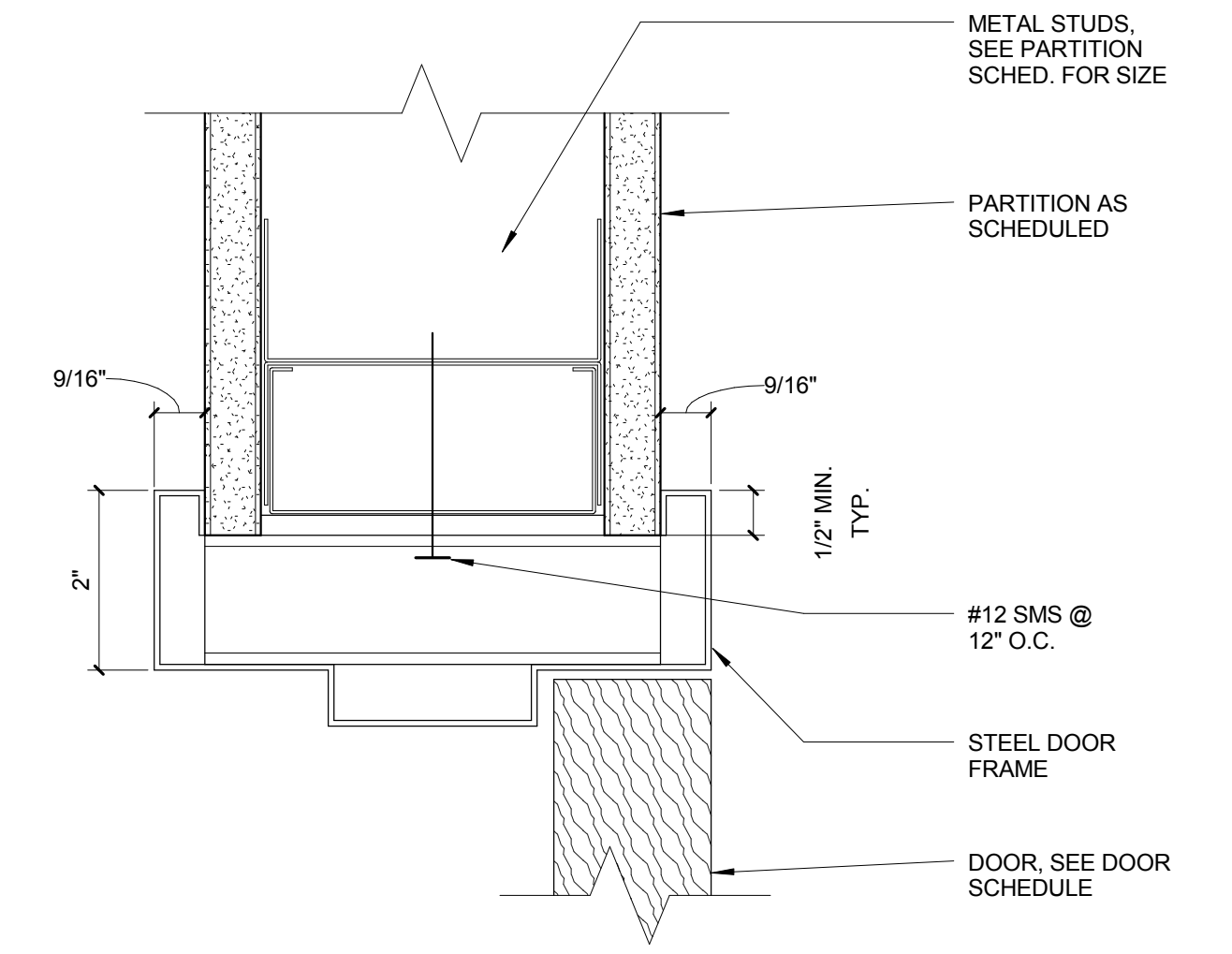
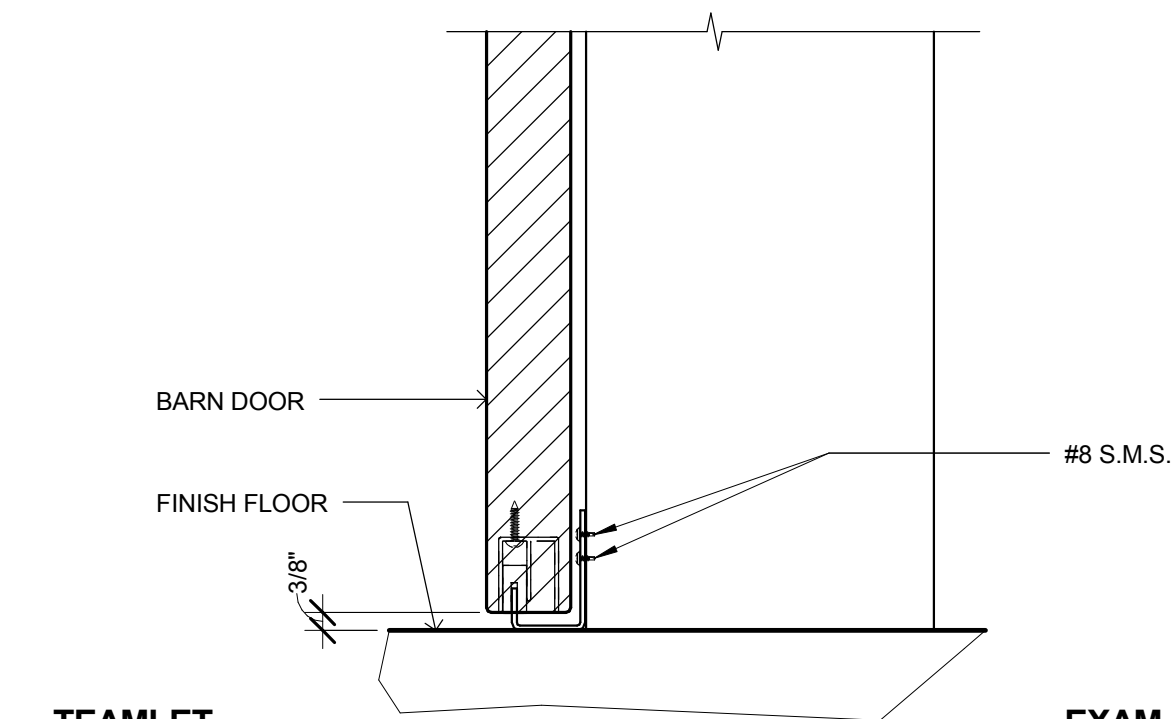
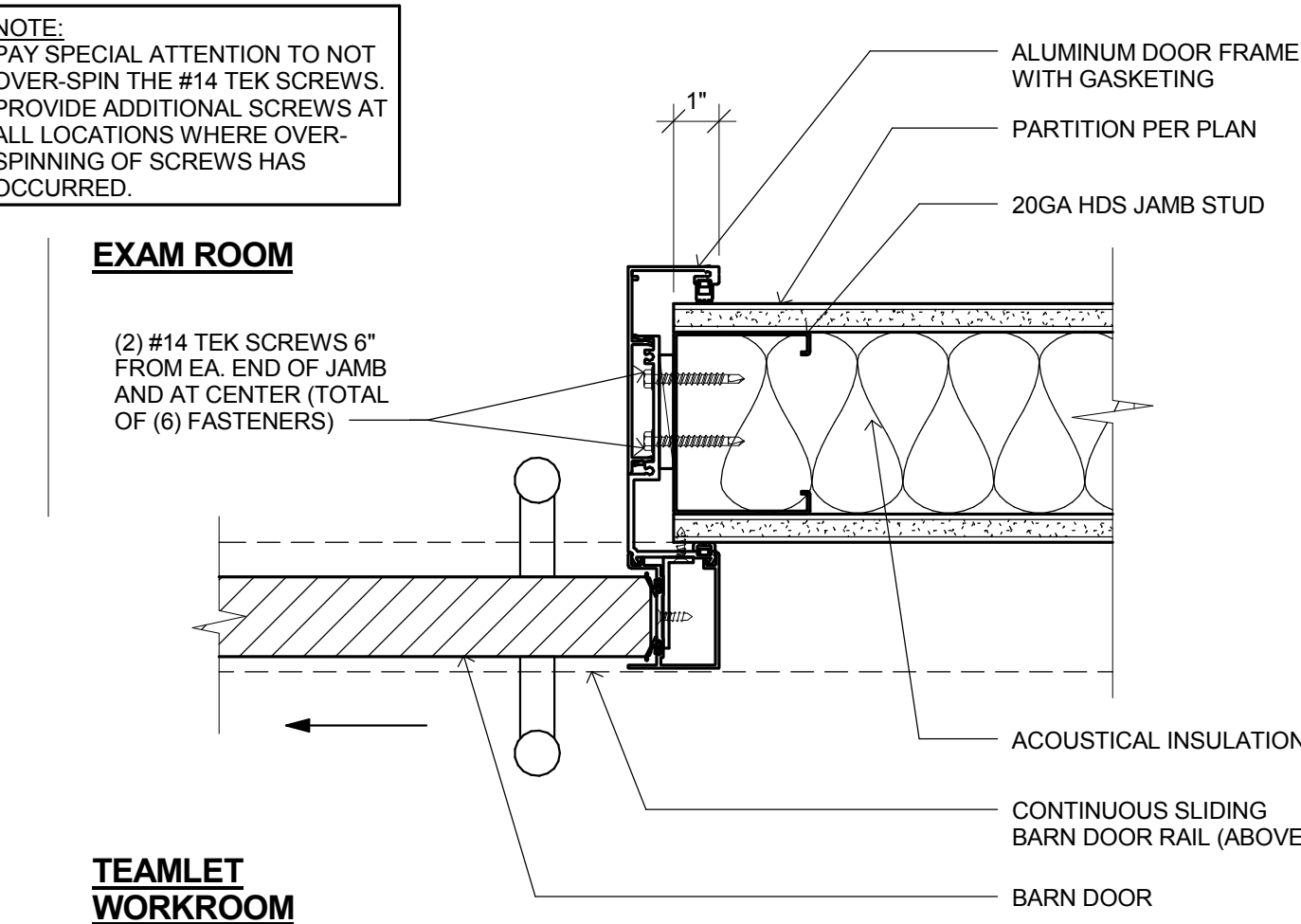
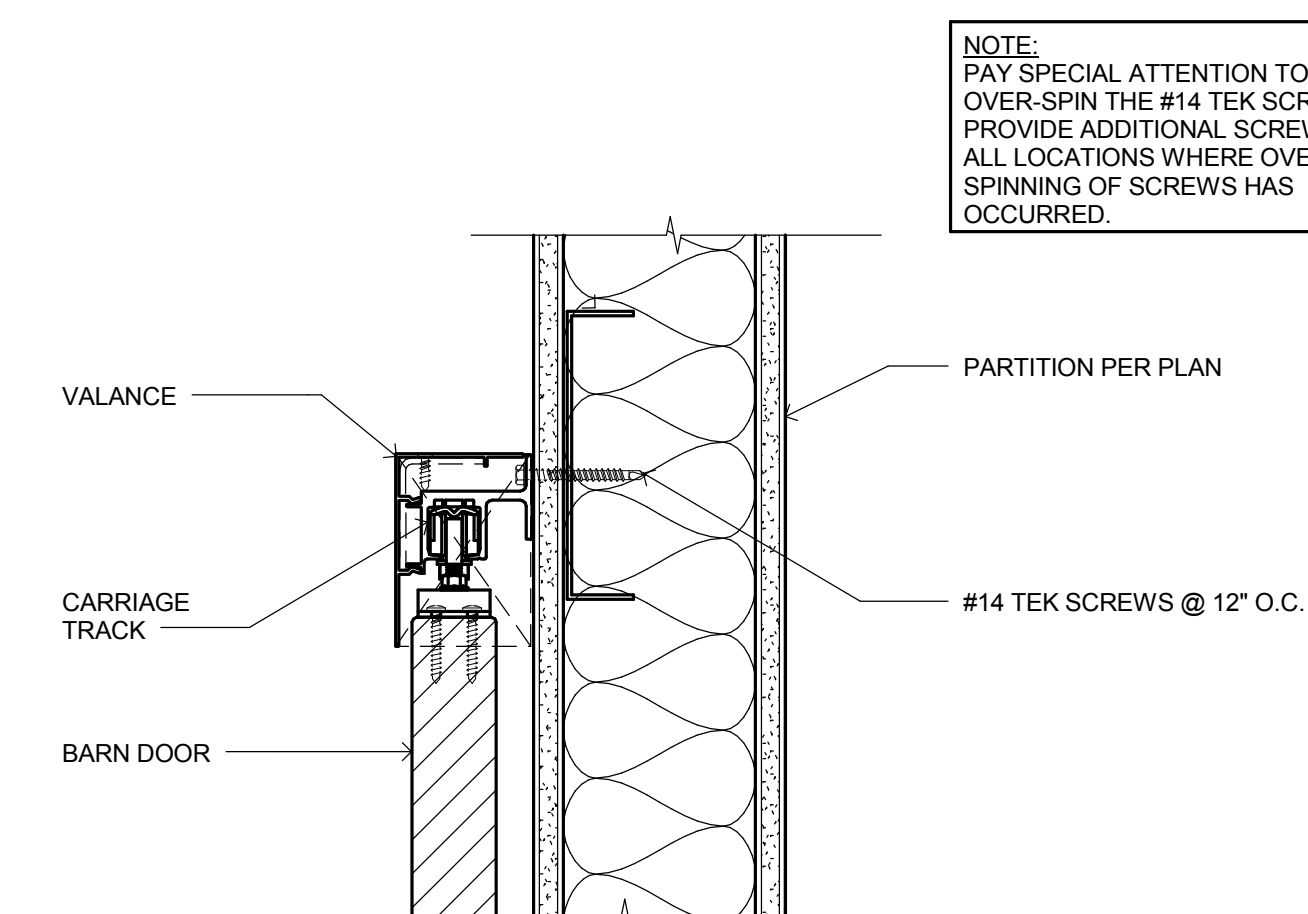
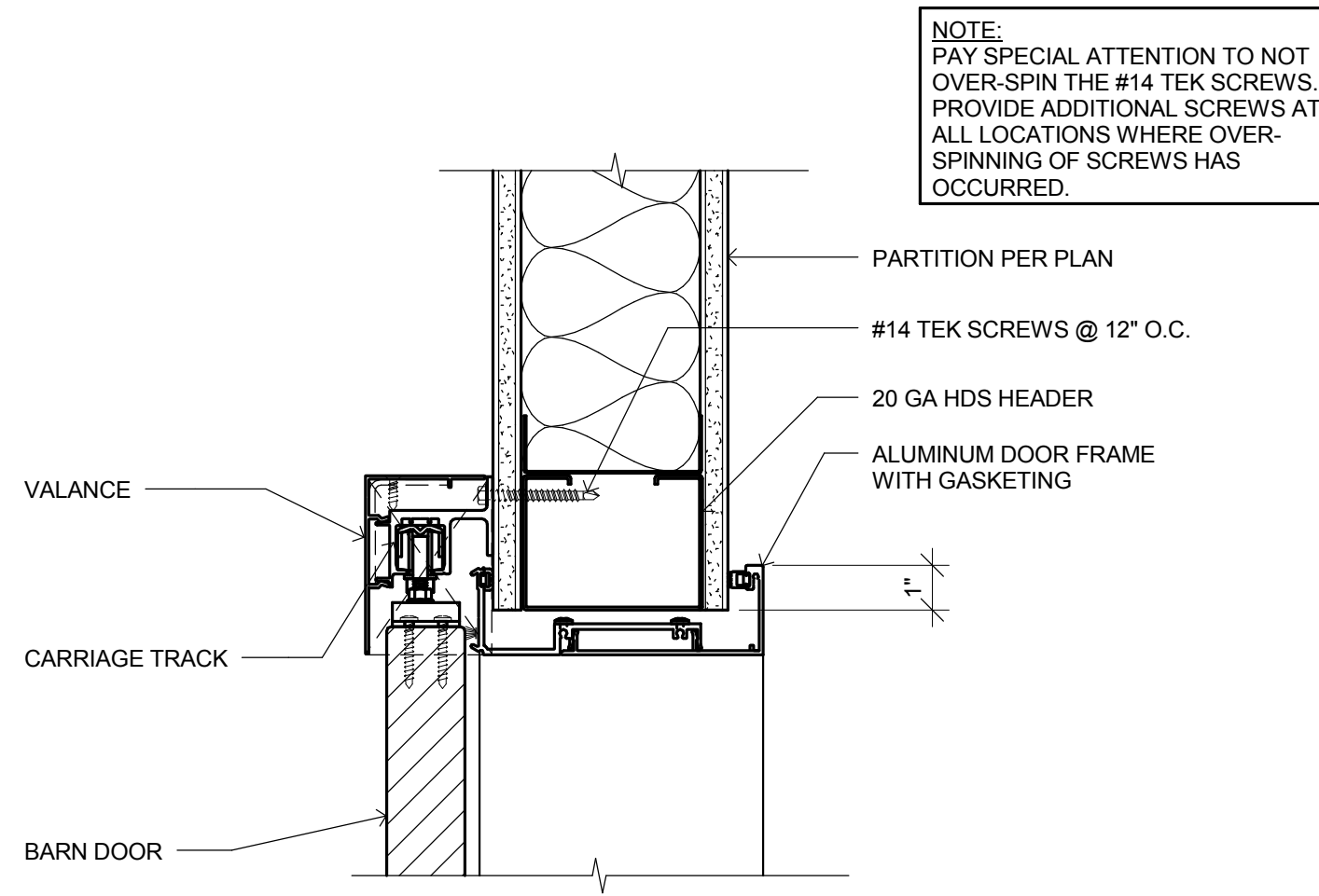
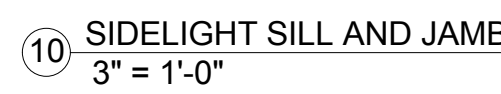
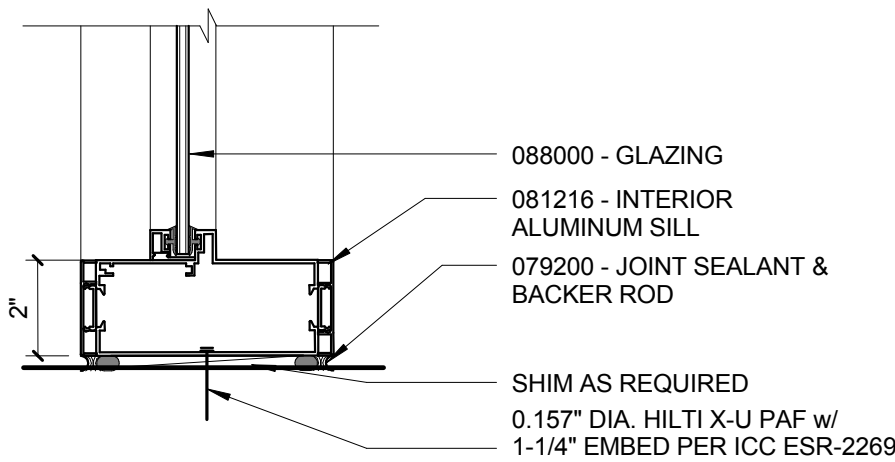
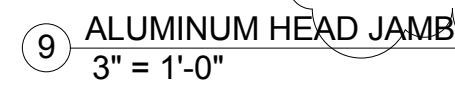
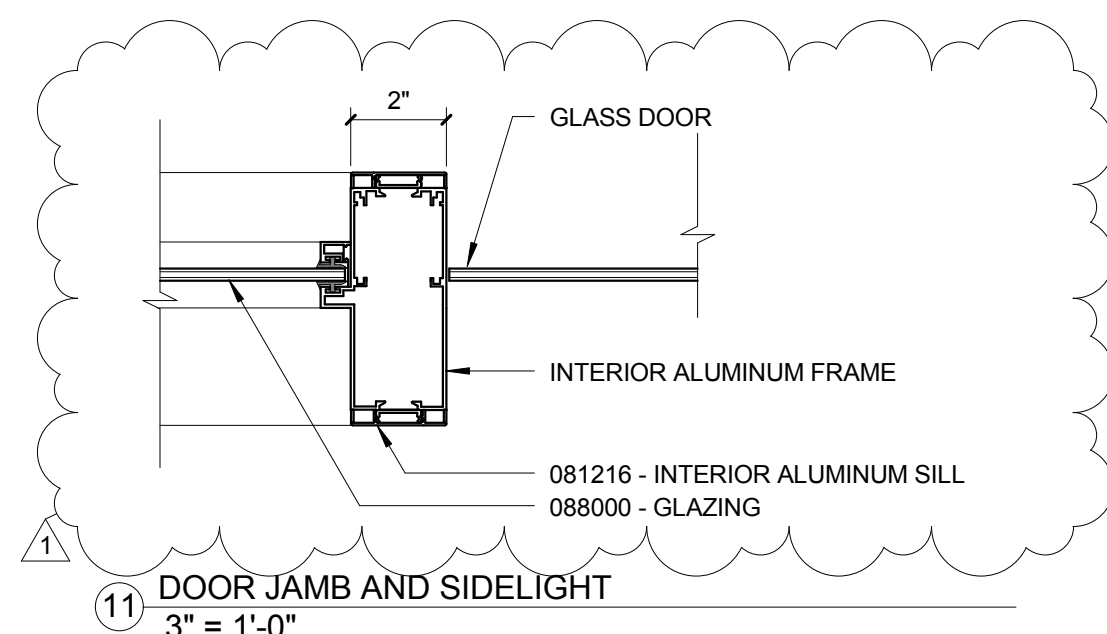
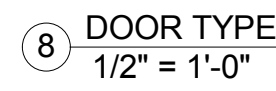
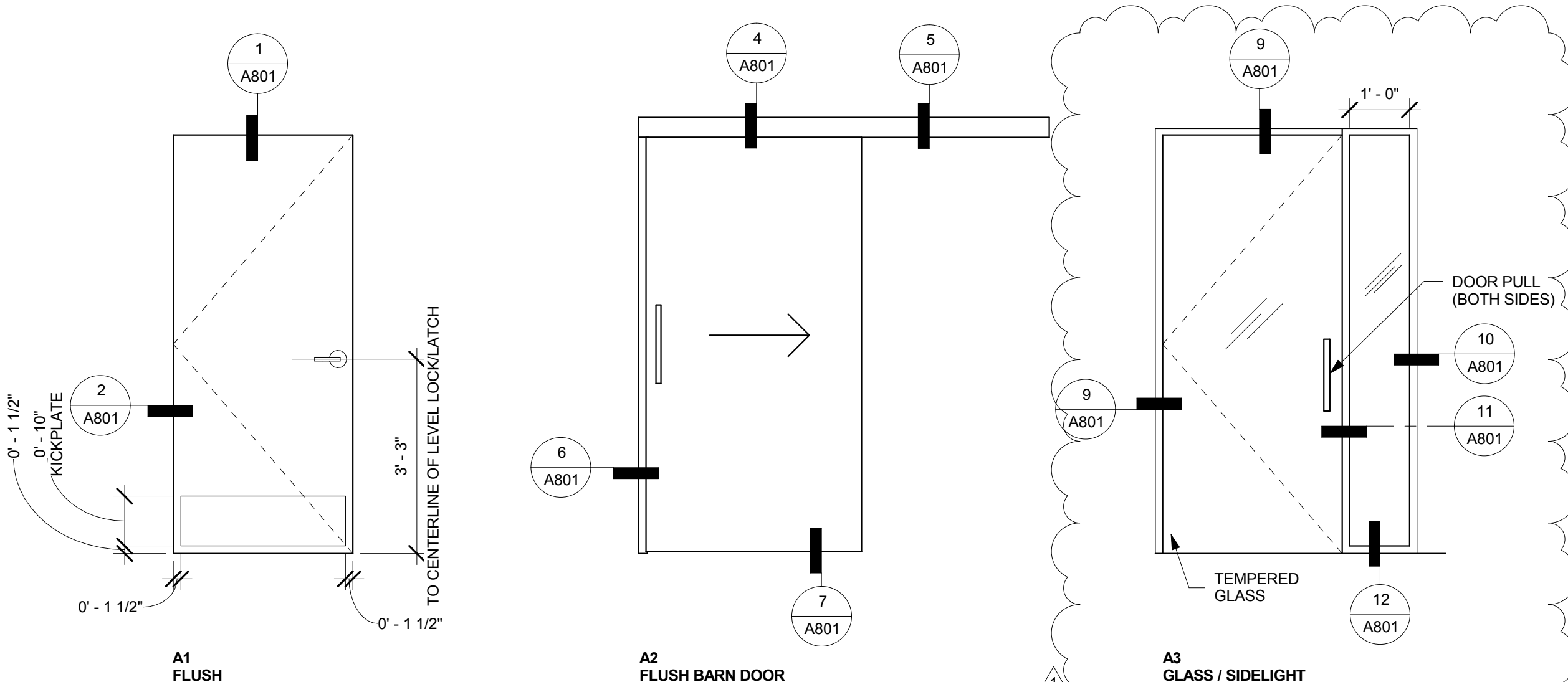
three inches = one foot
one and one half inches = one foot
one inch = one foot
three quarters inch = one foot
one half inch = one foot
three eighths inch = one foot
one quarter inch = one foot
one eighth inch = one foot



NOTES:
1. SEE FLOOR PLANS FOR TYPICAL LOCATIONS
2. EXTEND CORNER GUARDS FULL HEIGHT



DOOR AND FRAME SCHEDULE											
ROOM NAME	DOOR #	HW SET	MODE	WIDTH	HEIGHT	THICKNESS	DOOR FINISH	Frame	Outside Location	Inside Location	COMMENTS
DRESSING ROOM	CR001	01	SGL	3' - 0"	7' - 0"	0' - 1 3/4"	WD	HM	HALLWAY	CHANGING ROOM	
DRESSING ROOM	CR002	01	SGL	3' - 0"	7' - 0"	0' - 1 3/4"	WD	HM	HALLWAY	CHANGING ROOM	
EXAM ROOM	ER001	02	SL	3' - 4 1/2"	7' - 0"	0' - 1 3/4"	WD	UNK	HALLWAY	EXAM ROOM	3'-0" CLEAR OPENING
HALLWAY	H001	03	SGL	3' - 0"	7' - 0"	0' - 1 3/4"	WD	UNK	CORRIDOR	HALLWAY	
(E) RADIOLOGY SUITE	LC001	04	SGL	3' - 0"	7' - 0"	0' - 1 3/4"	WD	EXST	(E) LEARNING CENTER	(E) RADIOLOGY SUITE	
TOILET	R001	01	SGL	3' - 0"	7' - 0"	0' - 1 3/4"	WD	HM	HALLWAY	RESTROOM	



ADDENDUM 1
08/29/16

Office of
Construction
and Facilities
Management
VA PAHCS
Veterans Affairs Palo Alto Health Care System

ADDENDUM 1	08/29/16
Revisions:	Date

CONSULTANTS:

ARCHITECTS/ENGINEERS:



CONSTRUCTION
DOCUMENTS

Drawing Title
DOOR SCHEDULE & DETAILS

Approved: Project Director

Project Title
Radiology Renovation for
Mammography

Location
Palo Alto, CA

Date
7/19/2016

Checked

Drawn

Project Number
640-15-129

Building Number
100

Drawing Number
A801

Dwg. of