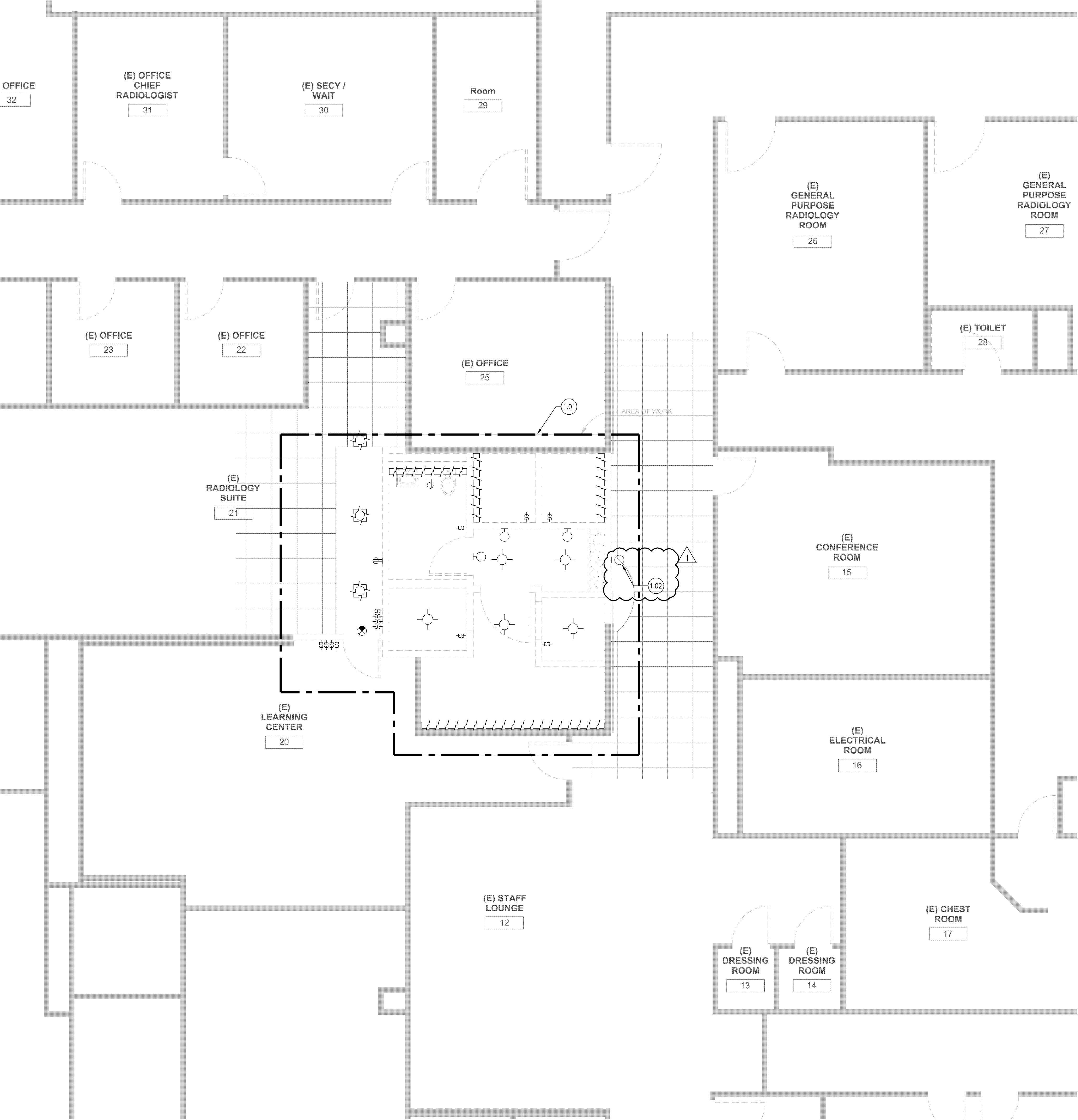


three inches = one foot
one and one half inches = one foot
one inch = one foot
three quarters inch = one foot
one half inch = one foot
three eighths inch = one foot
one quarter inch = one foot
one eighth inch = one foot
one sixteenth inch = one foot



SHEET NOTES

A. RETAIN EXISTING INTERCONNECTIONS OF THE NURSE CALL DEVICES TO THE MASTER NURSE CALL SYSTEM. NURSE CALL DEVICES WILL BE RE-USED AND RE-INSTALLED.

KEYNOTES

(1.01) UNLESS OTHERWISE NOTED, DISCONNECT AND REMOVE RECEPTACLES, SWITCHES, LUMINARIES, DOME LIGHTS, NURSE CALL DEVICES, AND MISCELLANEOUS ELECTRICAL COMPONENTS. (E) BRANCH CIRCUITS TO REMAIN FOR REUSE. REFERENCE THE NEW WORK FLOOR PLANS. PROVIDE J-BOX WITHIN THE PROJECT AREA FOR RECONNECTION. MAINTAIN CIRCUIT CONTINUITY TO OTHER DEVICES SERVING BEYOND THE PROJECT AREA OF WORK. NOT ALL DEVICES ARE SHOWN.

(1.02) TO REMAIN FOR RE-USE.

1 BLDG 100
PARTIAL FIRST FLOOR PLAN - DEMOLITION
SCALE: 1/4"=1'-0"

ADDENDUM 1	AUG 30, 2016
100% CONSTRUCTION DOCUMENTS	JUNE 13, 2016
100% DESIGN DEVELOPMENT	APR 22, 2016
Revisions:	Date

CONSULTANTS:

GUTTMANN & BLAEVOET
CONSULTING ENGINEERS
2351 Powell Street
San Francisco, CA 94133-1449
P 415 655 4000 F 415 655 4001
E g&b@gb-eng.com

REGISTERED PROFESSIONAL ENGINEER
VICTOR G. STEFFEN
No. E11872
Exp. 12/31/16
STATE OF CALIFORNIA

ARCHITECTS/ENGINEERS:

ABA ANDERSON BRULÉ ARCHITECTS

CONSTRUCTION DOCUMENTS

Drawing Title
PARTIAL FIRST FLOOR PLAN - DEMOLITION

Approved: Project Director

Project Title
Radiology Renovation for Mammography

Location
Palo Alto, CA

Date
05/06/2016

Checked

Drawn

Project Number
640-15-129

Building Number
100

Drawing Number
ED101

Dwg. - of

Office of Construction and Facilities Management

VA PAHCS
Veterans Affairs Palo Alto Health Care System

ADDENDUM #1
8/29/16

