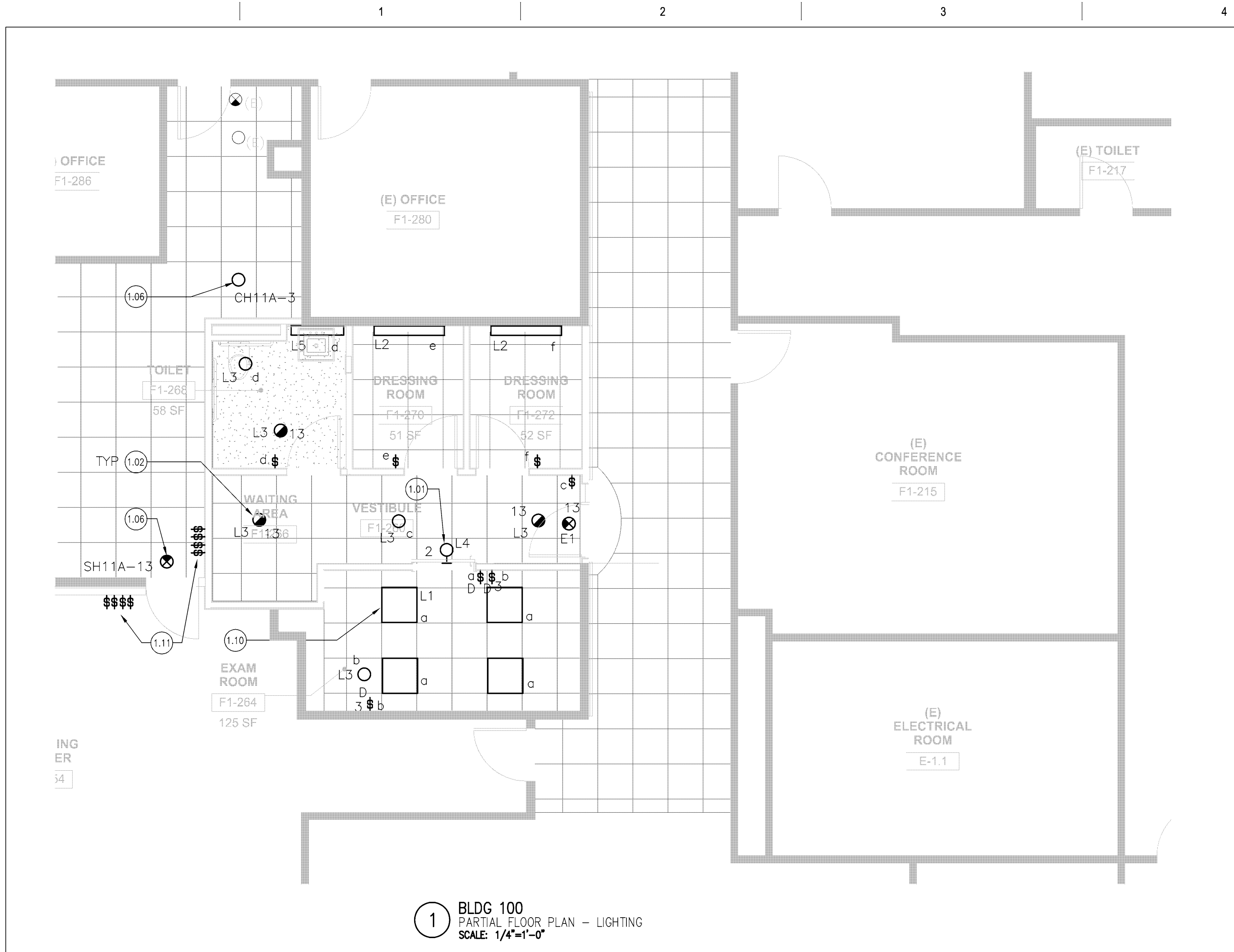


three eighths inch = one foot
one eighth inch = one foot
one quarter inch = one foot
one half inch = one foot
three quarters inch = one foot
one inch = one foot
one and one half inches = one foot
two inches = one foot
three inches = one foot



ADDENDUM 1	AUG 30, 2016
100% CONSTRUCTION DOCUMENTS	JUNE 13, 2016
100% DESIGN DEVELOPMENT	APR 22, 2016
Revisions:	Date

CONSULTANTS:

GUTTMANN & BLAEVOET
CONSULTING ENGINEERS
2351 Powell Street
San Francisco, CA 94133-1449
P 415 655 4000 F 415 655 4001
E g&b@gb-eng.com

REGISTERED PROFESSIONAL ENGINEER
VICTOR G. STEFFEN
No. E11872
Exp. 12/31/16
STATE OF CALIFORNIA

ARCHITECTS/ENGINEERS:

ABA ANDERSON BRULÉ ARCHITECTS

CONSTRUCTION DOCUMENTS

Drawing Title
ENLARGED FLOOR PLANS - MAMMOGRAPHY ROOM

Approved: Project Director

Project Title
Radiology Renovation for Mammography

Location
Palo Alto, CA

Date
05/06/2016

Checked

Drawn

Project Number
640-15-129

Building Number
100

Drawing Number
E401

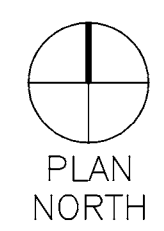
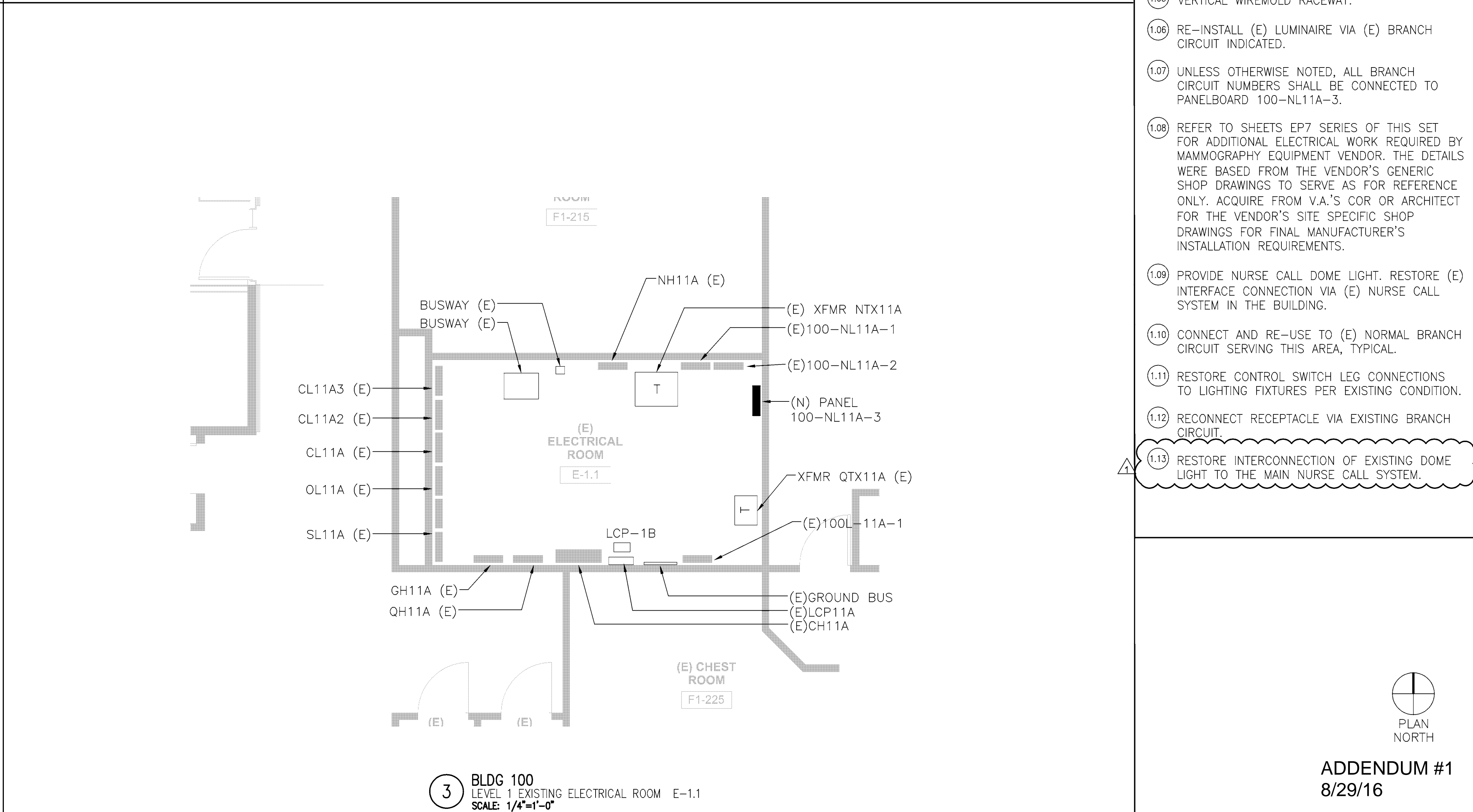
Dwg. - of

Office of Construction and Facilities Management

VA PAHCS
Veterans Affairs Palo Alto Health Care System

- ### SHEET NOTES
- CONNECT ALL FIRE ALARM DEVICES VIA (E) FIRE ALARM SYSTEM IN THE BUILDING. THE F.A. DEVICES TO MATCH AND SHALL BE COMPATIBLE WITH THE BUILDING AND CAMPUS' FIRE ALARM SYSTEM.
 - PROVIDE COMMUNICATION OUTLETS AS INDICATED ON THE MAMMOGRAPHY EQUIPMENT SHOP DRAWINGS. COORDINATE WITH V.A.'S IT SYSTEM OFFICER FOR SYSTEM INTERCONNECTION REQUIREMENTS TO THE (E) COMMUNICATION SYSTEM.
 - PROVIDE ALL NURSE CALL DEVICES TO MATCH EXISTING MANUFACTURER OF NURSE CALL SYSTEM IN THE BUILDING.

- ### KEYNOTES
- MOUNT WARNING LIGHT ABOVE THE DOOR WITH SIGN TO READ "X-RAY IN-USE". INTERFACE CONTROL VIA DOOR SWITCH AND/OR MAMMOGRAPHY EQUIPMENT CONTROLS.
 - CONNECT TO LIFE SAFETY BRANCH CIRCUIT TO PANEL SH11A.
 - 40A/2P, 208V RECESSED MOUNT ENCLOSED CIRCUIT BREAKER.
 - SURFACE MOUNT, WIREMOLD 4000 SERIES RACEWAY.
 - VERTICAL WIREMOLD RACEWAY.
 - RE-INSTALL (E) LUMINAIRE VIA (E) BRANCH CIRCUIT INDICATED.
 - UNLESS OTHERWISE NOTED, ALL BRANCH CIRCUIT NUMBERS SHALL BE CONNECTED TO PANELBOARD 100-NL11A-3.
 - REFER TO SHEETS EP7 SERIES OF THIS SET FOR ADDITIONAL ELECTRICAL WORK REQUIRED BY MAMMOGRAPHY EQUIPMENT VENDOR. THE DETAILS WERE BASED FROM THE VENDOR'S GENERIC SHOP DRAWINGS TO SERVE AS FOR REFERENCE ONLY. ACQUIRE FROM V.A.'S COR OR ARCHITECT FOR THE VENDOR'S SITE SPECIFIC SHOP DRAWINGS FOR FINAL MANUFACTURER'S INSTALLATION REQUIREMENTS.
 - PROVIDE NURSE CALL DOME LIGHT. RESTORE (E) INTERFACE CONNECTION VIA (E) NURSE CALL SYSTEM IN THE BUILDING.
 - CONNECT AND RE-USE TO (E) NORMAL BRANCH CIRCUIT SERVING THIS AREA, TYPICAL.
 - RESTORE CONTROL SWITCH LEG CONNECTIONS TO LIGHTING FIXTURES PER EXISTING CONDITION.
 - RECONNECT RECEPTACLE VIA EXISTING BRANCH CIRCUIT.
 - RESTORE INTERCONNECTION OF EXISTING DOME LIGHT TO THE MAIN NURSE CALL SYSTEM.



ADDENDUM #1
8/29/16