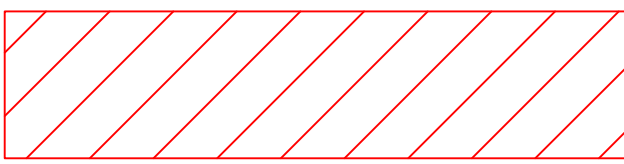
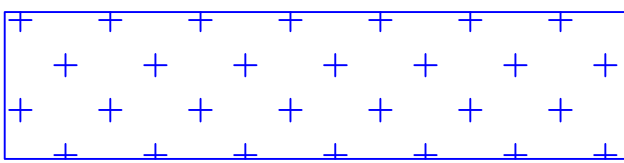


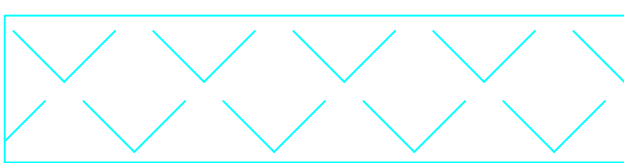
LEGEND



EXISTING ASBESTOS TILE FLOORING  
TO BE ABATED.



EXISTING ASBESTOS SHEET FLOORING  
TO BE ABATED.



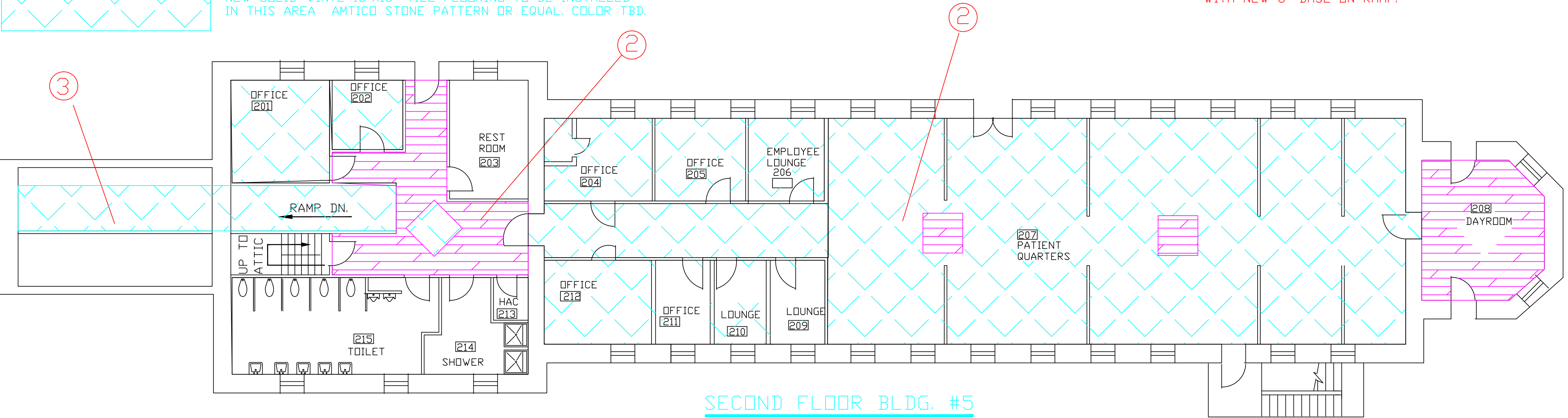
NEW SOLID VINYL 18"x18" TILE FLOORING TO BE INSTALLED  
IN THIS AREA. AMTICO STONE PATTERN OR EQUAL. COLOR TBD.



NEW SOLID VINYL 18"x18" TILE FLOORING TO BE INSTALLED  
IN THIS AREA. AMTICO STONE PATTERN OR EQUAL. COLOR TBD

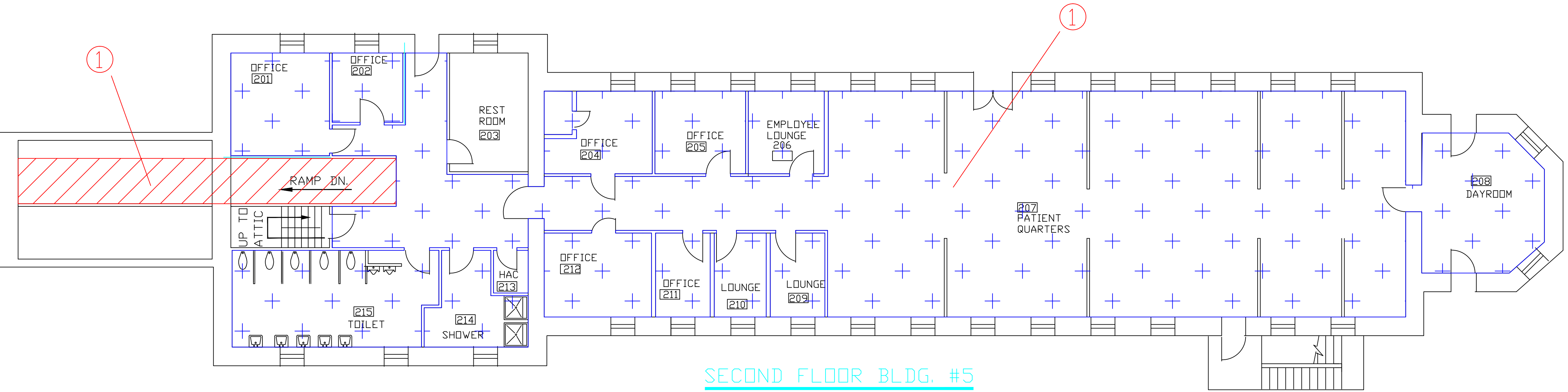
NOTES

- ① ABATE EXISTING ASBESTOS CONTAINING FLOORING AND MASTIC IN ACCORDANCE WITH SPECIFICATION SECTION 02 82 13.19. REMOVE EXISTING BASE.
- ② INSTALL NEW TILE FLOORING AND BASE IN THIS AREA.
- ③ INSTALL NEW NON-SKID TILE ON RAMP. ARMSTRONG 12" X 12" SAFETY ZONE OR EQUAL. COLOR TBD. REPLACE EXISTING 6" BASE ON RAMP WITH NEW 6" BASE ON RAMP.



SECOND FLOOR BLDG. #5

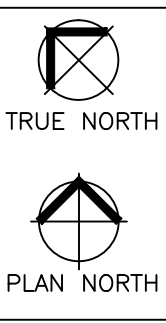
DEMOLITION SHEET



SECOND FLOOR BLDG. #5

DEMOLITION SHEET

REVISIONS	DATE



Drawing Title <b>BUILDING 5 SECOND FLOOR</b>	Project Title <b>REPLACE FLOORING PHASE 1</b>	Project No. 568-12-201	Office of Facilities Management  Department of Veterans Affairs
Approved: Division Chief	Location V.A. MEDICAL CENTER HOT SPRINGS, SD	Building Number 5	
Approved: Service Director	Date 11/25/2011	DRAWING NO. <b>A2</b>	
Drawing Scale 1/8" = 1'	Checked DS	Dwg. 3 Of 11	