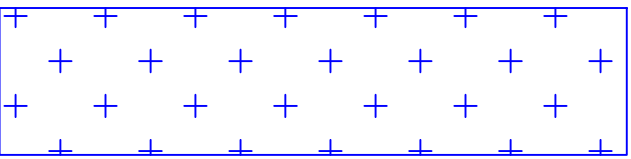
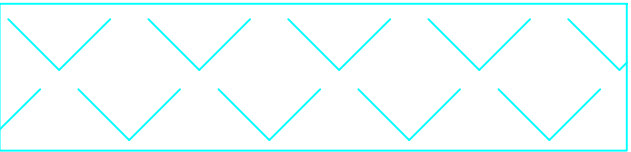


DEDUCT ALTERNATE 2

LEGEND



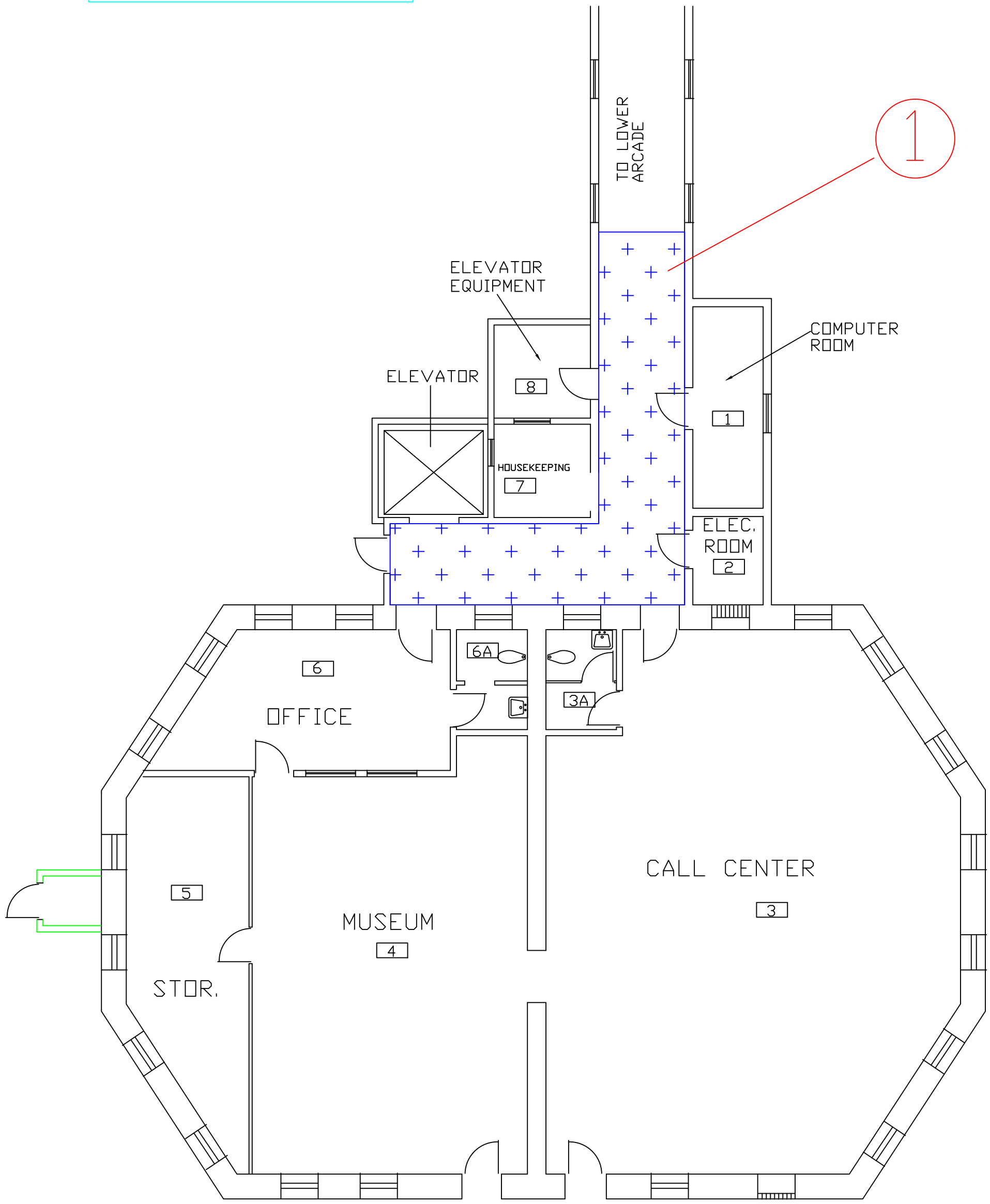
EXISTING ASBESTOS SHEET FLOORING  
TO BE ABATED.



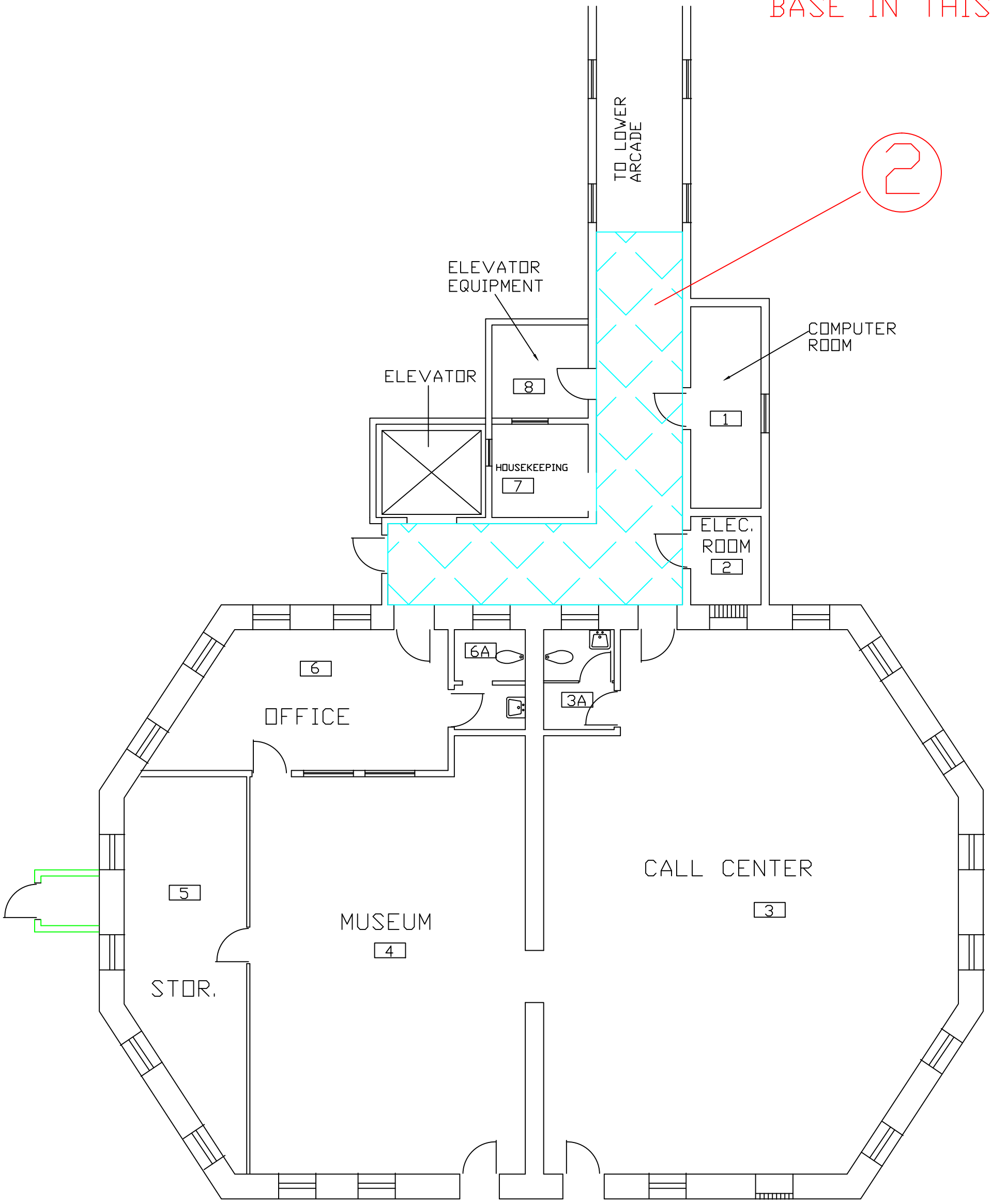
NEW TILE FLOORING TO BE INSTALLED  
IN THIS AREA.

NOTES

- ① ABATE EXISTING ASBESTOS  
CONTAINING FLOORING AND MASTIC  
IN ACCORDANCE WITH SPECIFICATION  
SECTION 02 82 13.19. REMOVE  
EXISTING BASE.
- ② INSTALL NEW TILE FLOORING AND  
BASE IN THIS AREA.

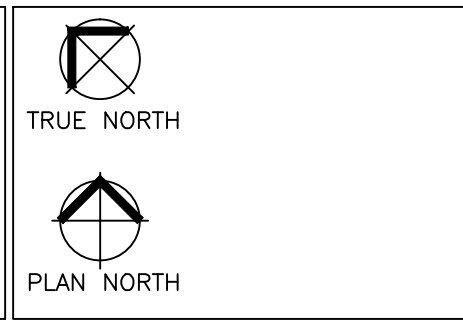


GROUND FLOOR BLDG. #11  
DEMOLITION SHEET



GROUND FLOOR BLDG. #11  
NEW WORK

REVISIONS	DATE

Drawing Scale 1/8" = 1'
Plot Scale 1/8" = 1'

Drawing Title BUILDING 11 GROUND FLOOR
Approved: Division Chief
Approved: Service Director

Project Title REPLACE FLOORING PHASE 1
Location V.A. MEDICAL CENTER HOT SPRINGS, SD
Date 11/25/2011
Checked DS
Drawn DS

Project No. 568-12-201
Building Number 11
DRAWING NO. A9
Dwg. 10 Of 11

Office of  
Facilities  
Management

Department of  
Veterans Affairs