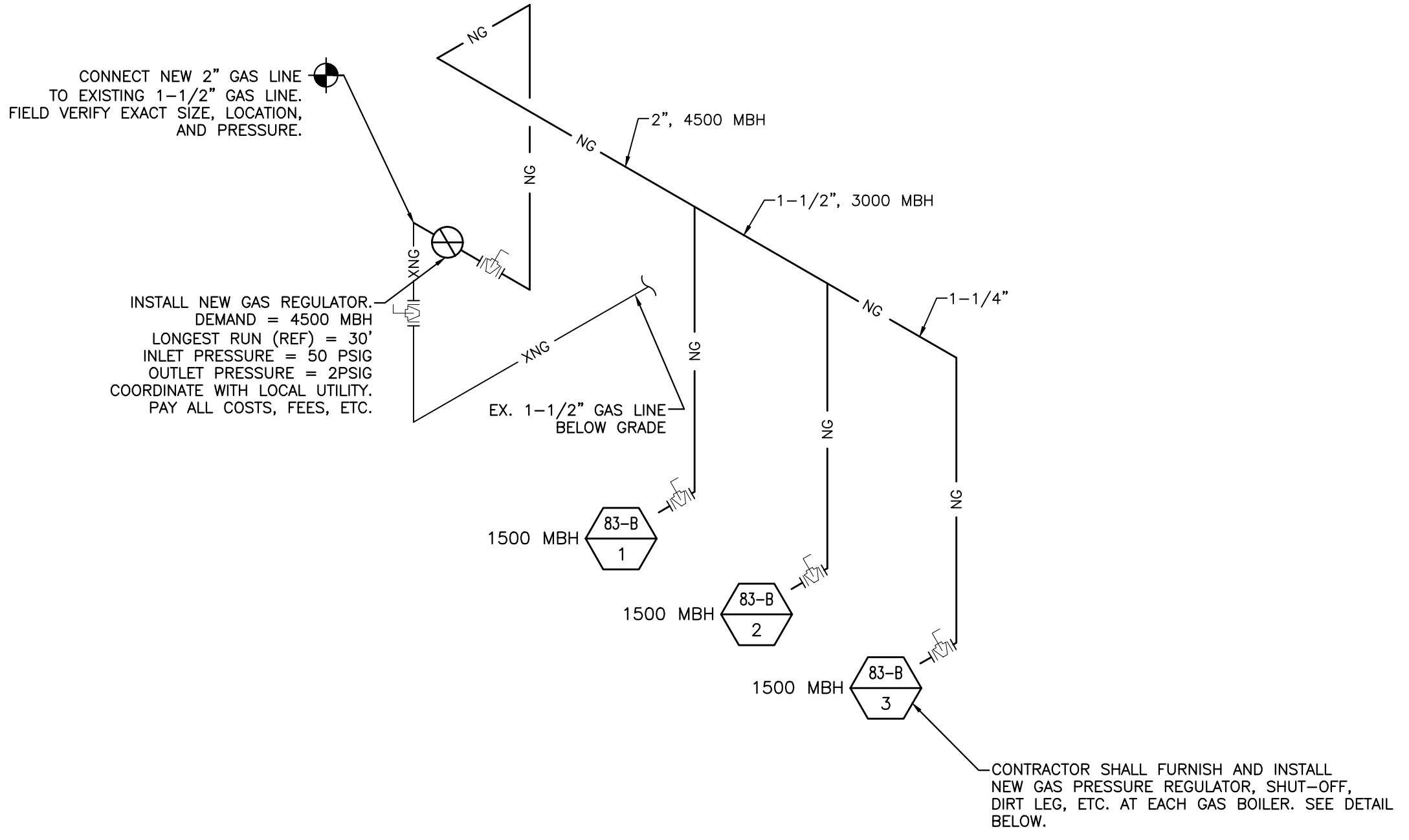


ENLARGED MECHANICAL ROOM B-6

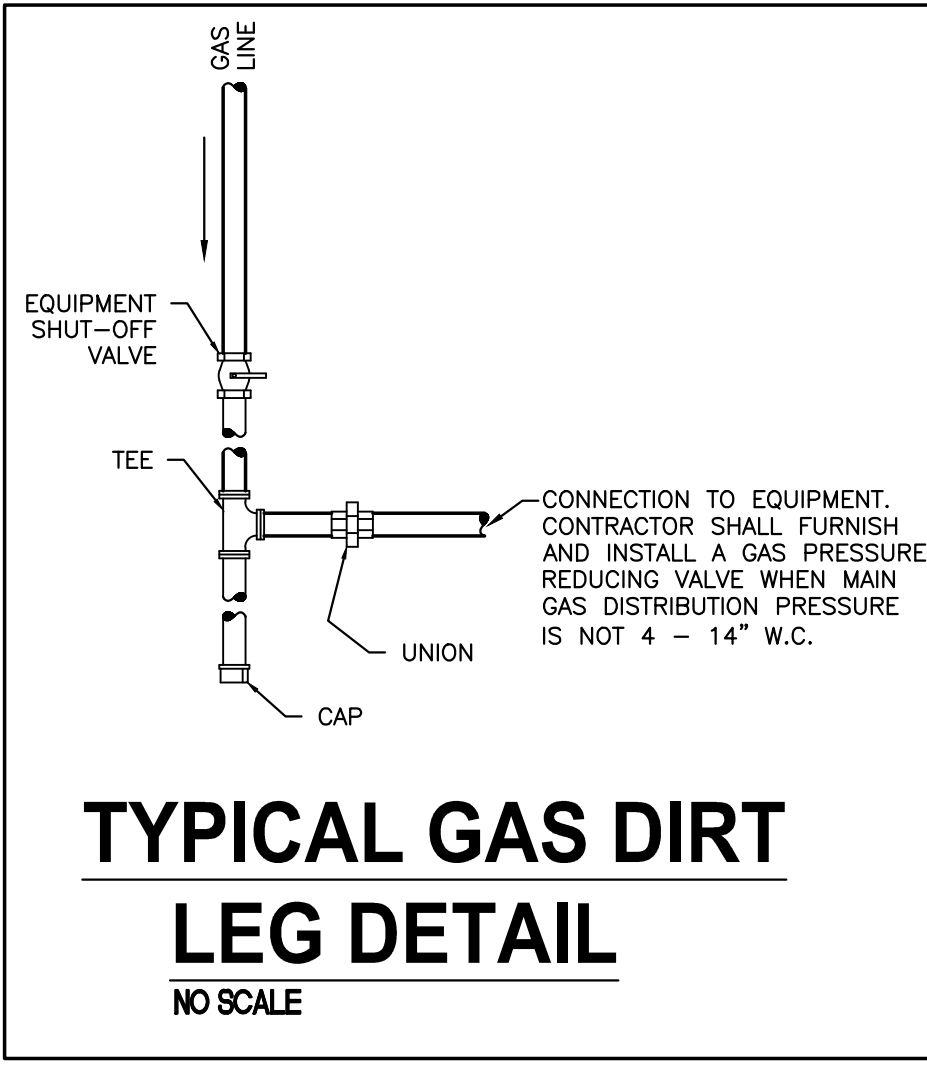
GAS PLUMBING PLAN - BASEMENT - BUILDING 83

SCALE: 1/4"=1'-0"



GAS PLUMBING RISER DIAGRAM

NOT TO SCALE



TYPICAL GAS DIRT LEG DETAIL

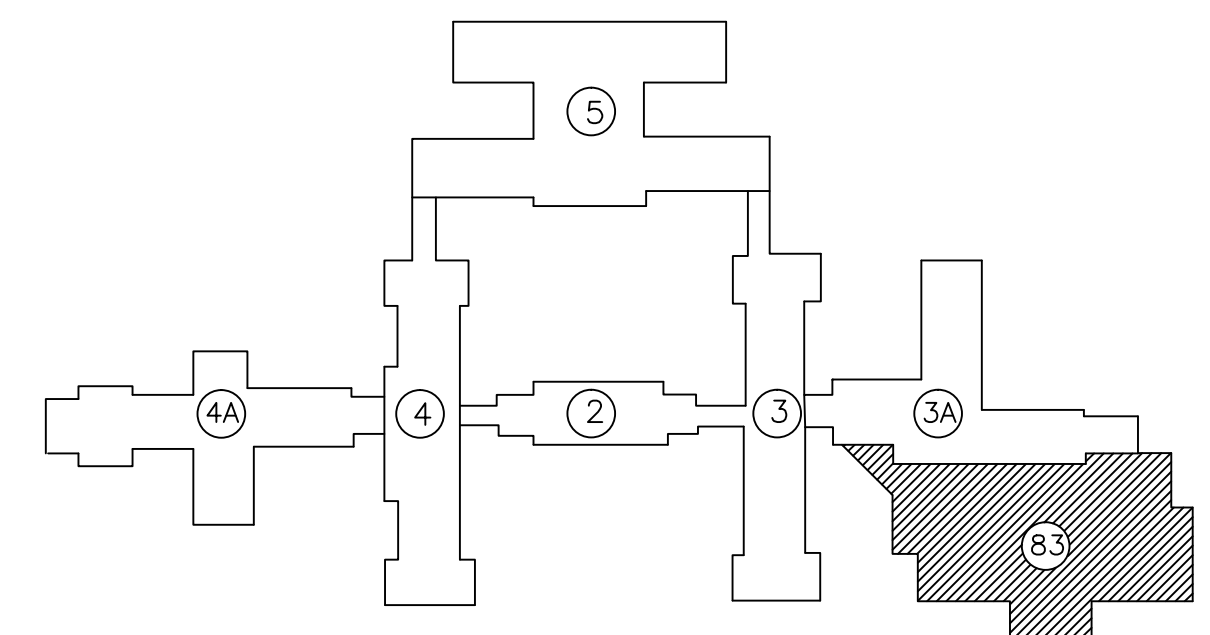
NO SCALE

PLUMBING NOTES

1. THESE DRAWINGS ARE SCHEMATIC IN NATURE AND ARE NOT INTENDED TO SHOW ALL POSSIBLE CONDITIONS. IT IS INTENDED THAT A COMPLETE PLUMBING SYSTEM BE PROVIDED WITH ALL NECESSARY EQUIPMENT, ACCESSORIES, AND CONTROLS COMPLETELY COORDINATED WITH ALL TRADES. ALL REQUIREMENTS GIVEN IN THESE DOCUMENTS SHALL BE STRICTLY CONFORMED TO. ANY ITEMS AND LABOR REQUIRED FOR A COMPLETE PLUMBING SYSTEM IN ACCORDANCE WITH ALL APPLICABLE CODES, STANDARDS, LOCAL AUTHORITIES, AND THESE CONTRACT DOCUMENTS SHALL BE FURNISHED WITHOUT INCURRING ANY ADDITIONAL COST TO THE OWNER. CAREFULLY REVIEW ALL CONTRACT DOCUMENTS AND THE DESIGN OF OTHER TRADES BEFORE PREPARING SHOP DRAWINGS.
2. COORDINATE ALL WORK WITH ARCHITECTURAL, STRUCTURAL, HVAC AND ELECTRICAL TRADES. PIPE ROUTING SHOWN IS DIAGRAMMATIC. PROVIDE ALL OFFSETS, ETC., TO AVOID INTERFERENCES WITH EQUIPMENT, PIPING, DUCTWORK, LIGHTS, CONDUIT, ETC..
3. COORDINATE ALL FLOOR PENETRATIONS WITH STRUCTURAL DRAWINGS. SET SLEEVES IN FLOORS AND WALLS AND ATTACHMENTS FOR HANGERS AS CONSTRUCTION PROGRESSES. ALL PENETRATIONS MUST BE SEALED AND HELD AS TIGHT TO COLUMNS OR WALLS AS POSSIBLE.
4. PLUMBING CONTRACTOR SHALL MAKE FINAL CONNECTIONS TO ALL EQUIPMENT INDICATED ON DRAWINGS. FINAL CONNECTION SHALL INCLUDE ANY ADAPTORS, NIPPLES, SHUT-OFF VALVES, PRVS, SHOCK ABSORBERS, BACKFLOW PREVENTION DEVICES, REGULATORS ETC..
5. ALL STRUCTURAL PENETRATIONS (SLEEVES, BLOCKOUTS, ETC.) ARE TO BE LOCATED AND COORDINATED IN THE FIELD BY THE CONTRACTOR IN RELATION TO THE REQUIREMENTS OF FINAL EQUIPMENT AND FIXTURES SELECTED.
6. FIELD VERIFY EXACT SIZE, MATERIAL, AND LOCATION OF ALL EXISTING UTILITIES BEFORE BEGINNING WORK.
7. PROVIDE INSULATING UNION BETWEEN ABOVE AND BELOW GROUND GAS PIPING.
8. ALL EXPOSED INTERIOR OR EXTERIOR GAS LINES ARE TO BE PAINTED BY THE PLUMBING CONTRACTOR WITH ONE COAT OF LATEX PAINT. INTERIOR COLOR TO MATCH WALL. EXTERIOR COLOR TO BE SELECTED BY ARCHITECT.
9. LABEL ALL 2PSIG GAS PIPING IN ACCORDANCE WITH 2006 INTERNATIONAL CODES (6 FT. CENTERS).
10. PRIME AND PAINT ALL EXPOSED GAS PIPING. VERIFY COLOR WITH ENGINEER.
11. FURNISH AND INSTALL GAS PRESSURE REGULATING/REDUCING VALVES AT EACH APPLIANCE, WHERE REGULATORS ARE SELF-LIMITING TYPE, VENTS SHALL BE EXTENDED TO THE BUILDING EXTERIOR.
12. ALL GAS PIPING SHALL BE FURNISHED AND INSTALLED IN ACCORDANCE WITH NFPA 54, INTERNATIONAL FUEL GAS CODE.

PLUMBING LEGEND

— NG —	NATURAL GAS	⌘	GAS COCK
— XNG —	EXISTING GAS	⌘	CONNECT TO EXISTING



KEY PLAN

NOT TO SCALE

WHORTON ENGINEERING, INC.

HVAC - PLUMBING - PROCESS CONTROL

RANDALL WHORTON, P.E.
PH 256/820-9897 FAX 256/820-9896

25 SUMMERALL GATE ROAD
ANNISTON, ALABAMA 36205

WHORTON ENGINEERING PROJECT NO. 10159



Revisions	Date

MCE

MILLS-CONOLY
ENGINEERING, P.C.

8218 Old Federal Road
TELEPHONE: (334) 270-0010

Montgomery, AL 36117
FAX: (334) 270-0040

Central Alabama Veterans Health Care System

Approved:	Approved:
Approved:	Approved:
Approved:	Approved:
Approved:	Approved:

Drawing Title
BASEMENT GAS PLUMBING PLAN - BUILDING 83
Safety Officer
Clinical Representative

Project Title
HVAC MODIFICATIONS TO BUILDINGS 83, 90, & 93 TUSKEGEE, ALABAMA
Building Number
83
Checked
RDW
Drawn
TSC
Location
East Campus, Tuskegee, AL

Date
12/21/10
Project No.
619-10-445
DRAWING NO.
83P1.2
Rev. 18 of 59

Veterans Administration