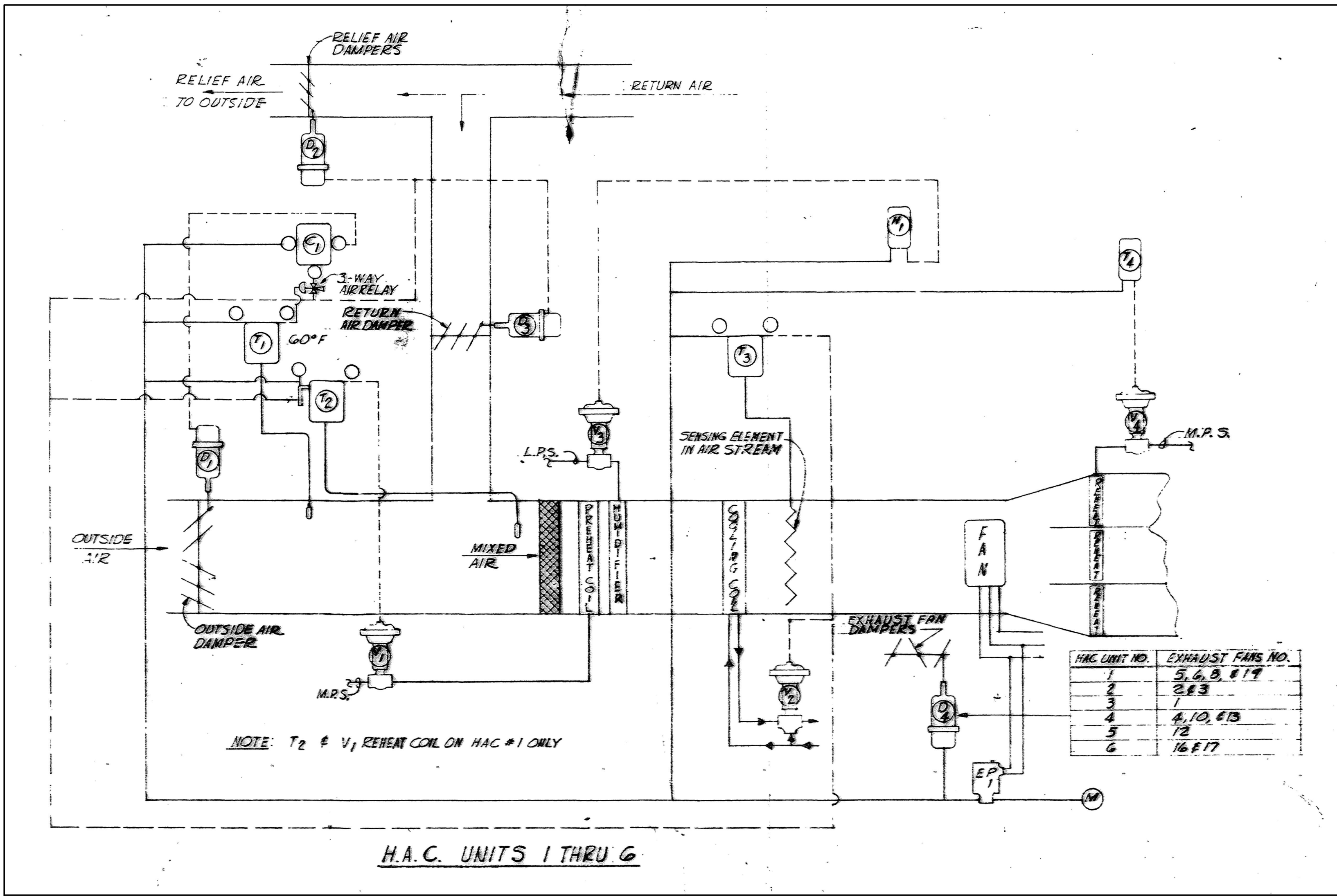
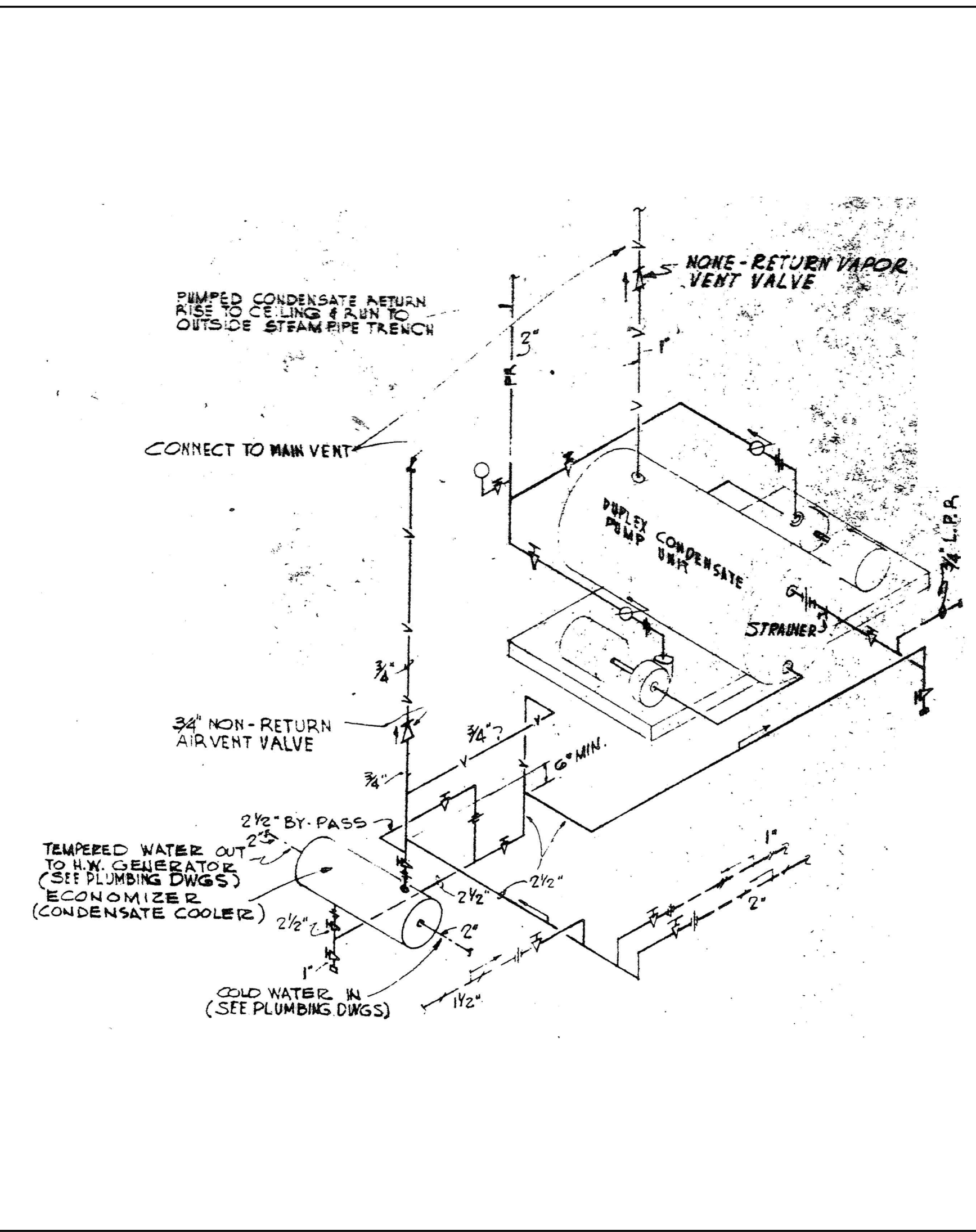


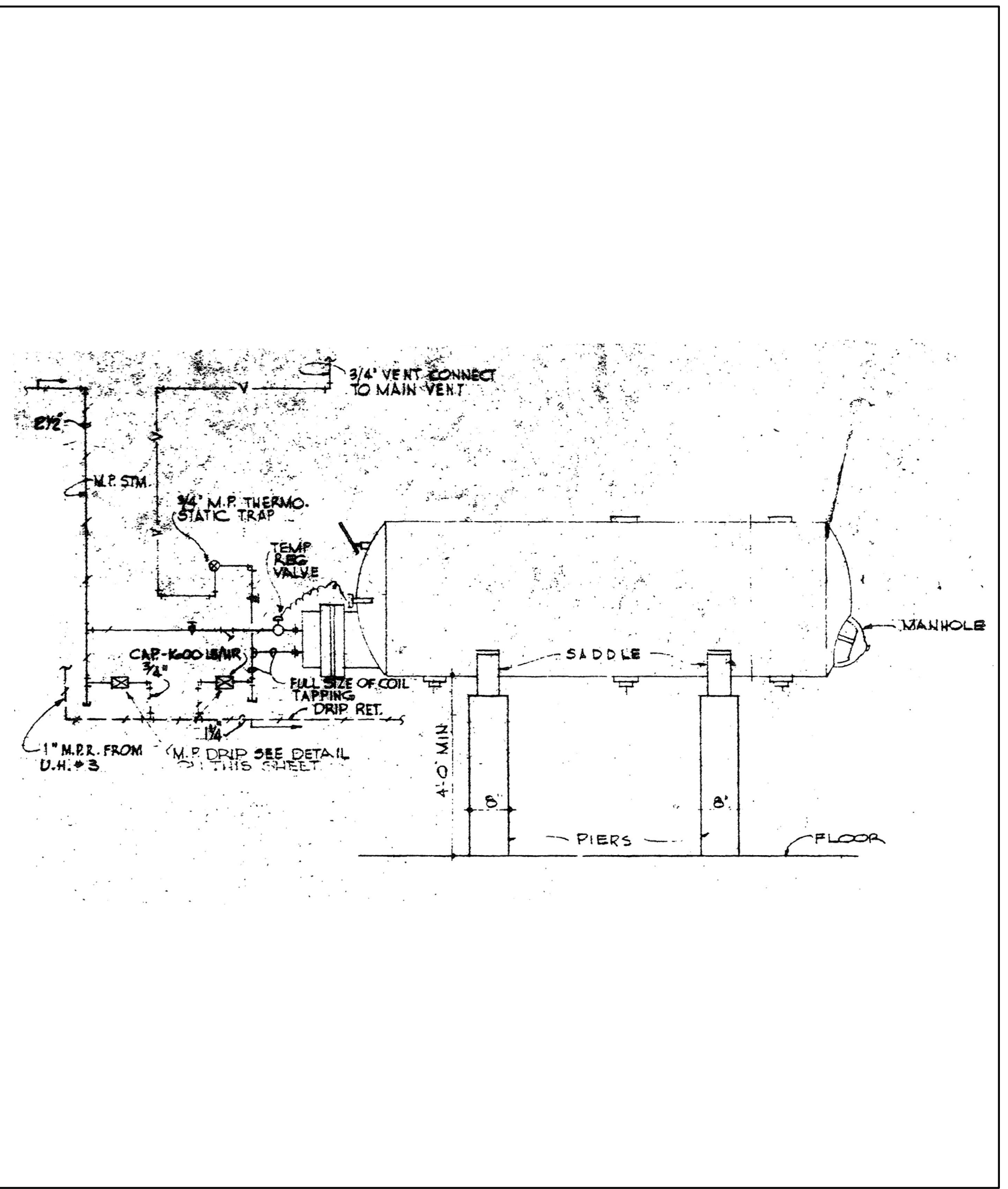
three inches = one foot  
one and one-half inches = one foot  
one inch = one foot  
three-quarters inch = one foot  
one-half inch = one foot  
three-eighths inch = one foot  
one-quarter inch = one foot  
one-eighth inch = one foot



EXISTING 1960 HVAC PLAN  
EXISTING CONTROL SCHEMATIC  
HAC-1 THRU HAC-6  
NOT TO SCALE



EXISTING 1960 HVAC PLAN  
SCHEMATIC DETAIL OF CONDENSATE  
PUMP AND ECONOMIZER CONNECTIONS  
NOT TO SCALE



EXISTING 1960 HVAC PLAN  
DOMESTIC HOT WATER GENERATOR  
CONNECTION DETAIL  
NOT TO SCALE

EXISTING  
HVAC DETAILS - BUILDING 90  
NOT TO SCALE

NOTE: EXISTING EQUIPMENT DATA IS SHOWN FOR  
REFERENCE PURPOSE ONLY. FIELD VERIFY  
ALL EXISTING CONDITIONS, EQUIPMENT, ETC.

Revisions	Date

**MCE** MILLS-CONOLY  
ENGINEERING, P.C.  
8218 Old Federal Road  
TELEPHONE: (334) 270-0010  
Montgomery, AL 36117  
FAX: (334) 270-0040

Central Alabama Veterans Health Care System

Approved:	Approved:
Approved:	Approved:
Approved:	Approved:
Approved:	Approved:

Drawing Title	Project Title	Date
EXISTING HVAC DETAILS BUILDING 90	HVAC MODIFICATIONS TO BUILDINGS 83, 90, & 93 TUSKEGEE, ALABAMA	12/21/10
Safety Officer	Building Number	Checked
Clinical Representative	90	RDW
	Drawn	JAD
	Location	Drawing No.
	East Campus, Tuskegee, AL	90M1.4
		Dwg. 22 of 59

Veterans  
Administration