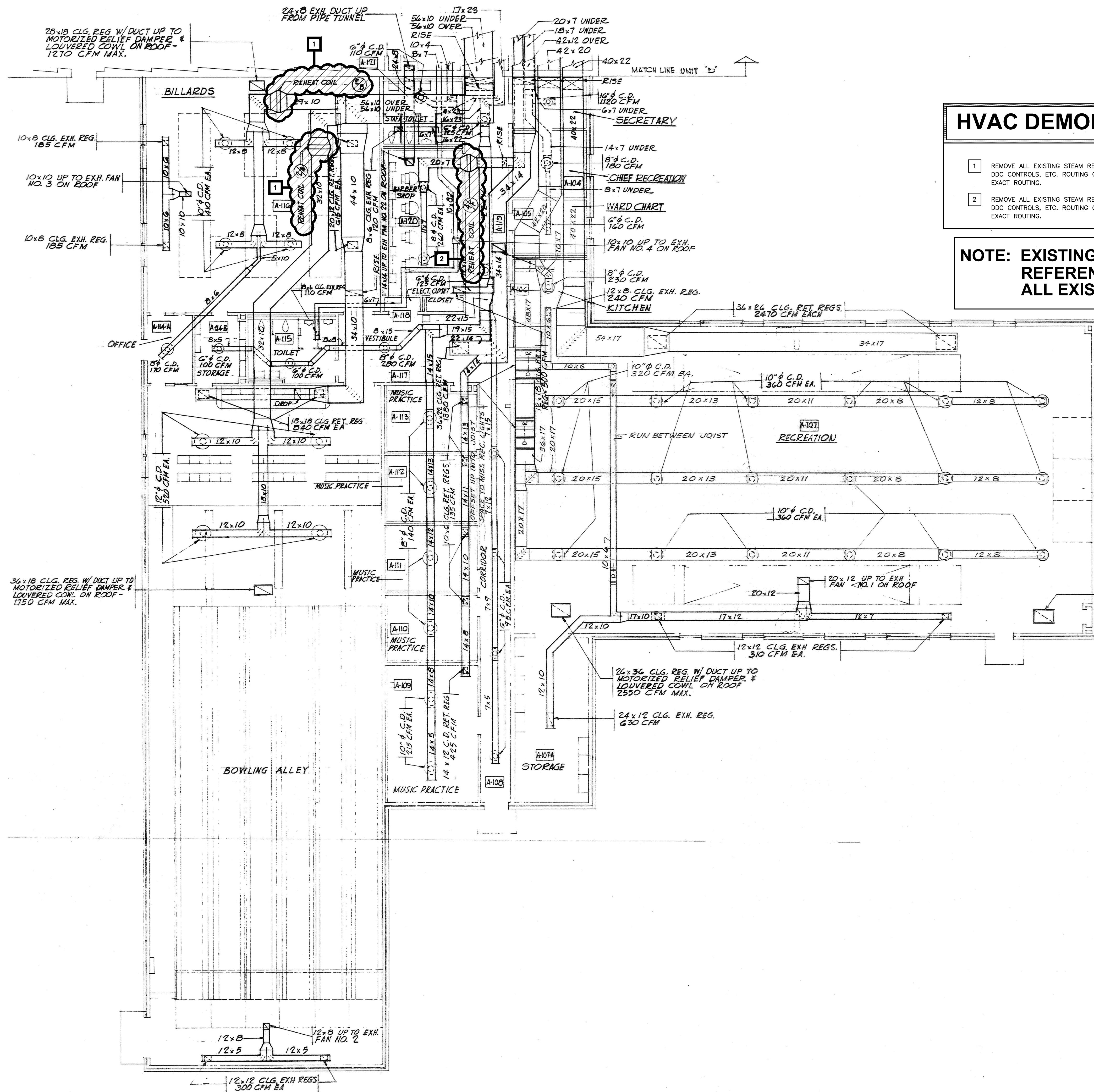


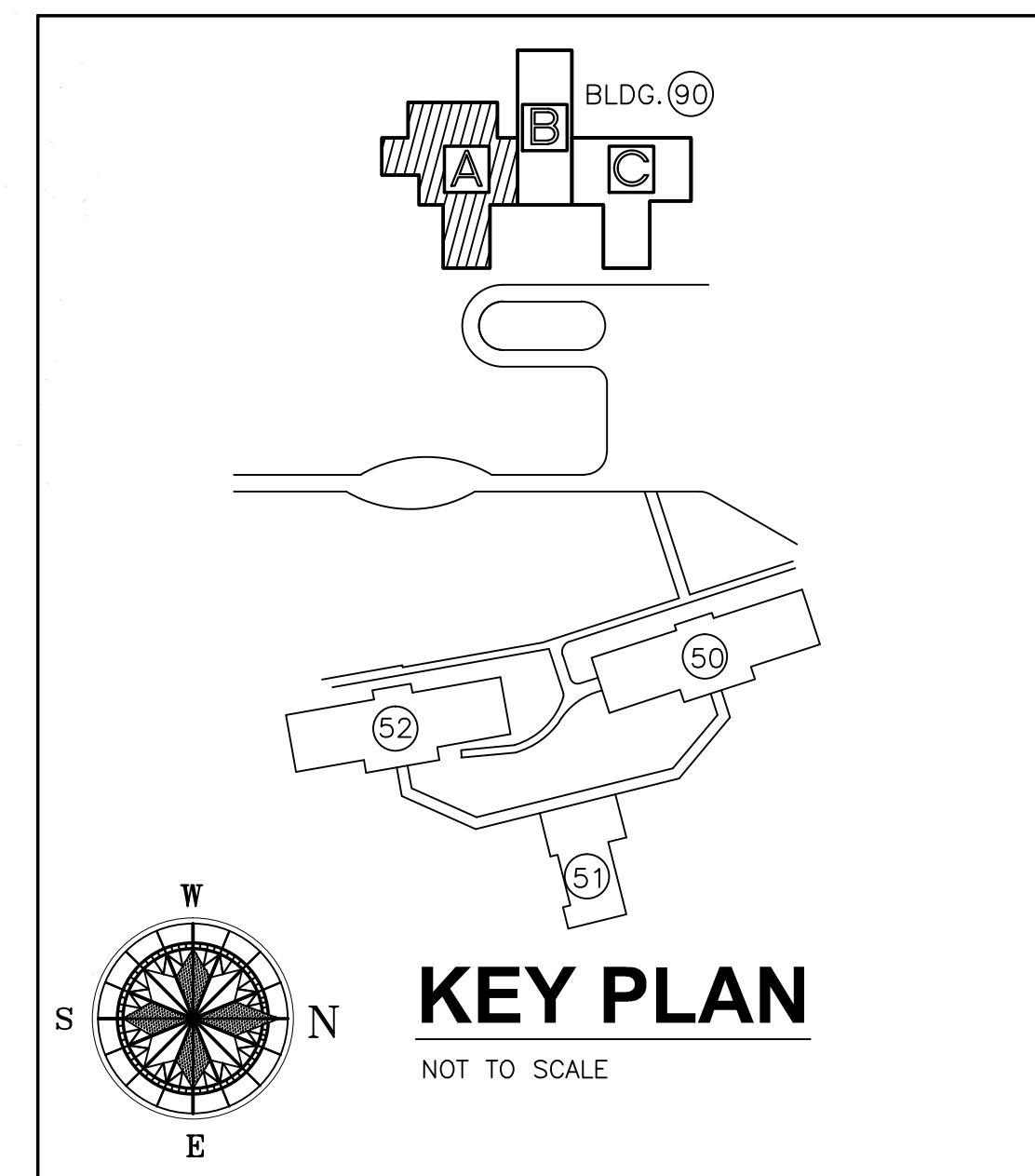
three inches = one foot
one and one-half inches = one foot
one inch = one foot
one-half inch = one foot
three-quarters inch = one foot
one-half inch = one foot
one-quarter inch = one foot
three-eighths inch = one foot
one-quarter inch = one foot
one-eighth inch = one foot



HVAC DEMOLITION/INSTALLATION NOTES

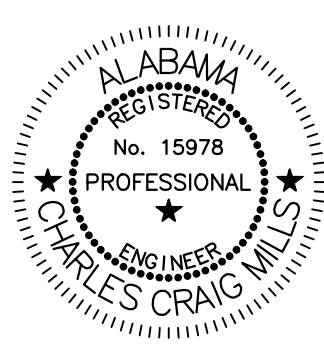
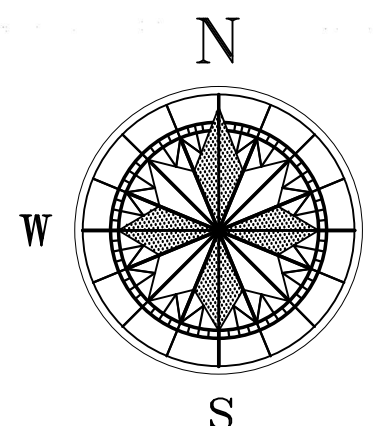
- 1 REMOVE ALL EXISTING STEAM REHEAT COILS, PIPING, ETC. AND INSTALL NEW HOT WATER REHEAT COILS, HOT WATER PIPING, DDC CONTROLS, ETC. ROUTING OF NEW HOT WATER PIPING TO FOLLOW SAME PATH AS EXISTING STEAM PIPING. FIELD VERIFY EXACT ROUTING.
- 2 REMOVE ALL EXISTING STEAM REHEAT COILS, PIPING, ETC. AND INSTALL NEW V.A.V. BOX, HOT WATER PIPING, DDC CONTROLS, ETC. ROUTING OF NEW HOT WATER PIPING TO FOLLOW SAME PATH AS EXISTING STEAM PIPING. FIELD VERIFY EXACT ROUTING.

NOTE: EXISTING EQUIPMENT DATA IS SHOWN FOR REFERENCE PURPOSE ONLY. FIELD VERIFY ALL EXISTING CONDITIONS, EQUIPMENT, ETC.



EXISTING 1960 HVAC DEMOLITION PLAN PARTIAL FIRST FLOOR PLAN - UNIT "A" BUILDING 90

NOT TO SCALE



MCE MILLS-CONOLY
ENGINEERING, P.C.

8218 Old Federal Road
TELEPHONE: (334) 270-0010
Montgomery, AL 36117
FAX: (334) 270-0040



Central Alabama Veterans Health Care System

Approved:	Approved:
Approved:	Approved:
Approved:	Approved:
Approved:	Approved:

Approved:	Approved:
Approved:	Approved:
Approved:	Approved:
Approved:	Approved:

Drawing Title
EXISTING 1960 DEMOLITION HVAC PLAN PARTIAL FIRST FLOOR PLAN - UNIT "A" BUILDING 90
Safety Officer
Clinical Representative

Project Title
HVAC MODIFICATIONS TO BUILDINGS 83, 90, & 93 TUSKEGEE, ALABAMA
Building Number
90
Checked
RDW
Drawn
JAD
Location
East Campus, Tuskegee, AL

Date
12/21/10
Project No.
619-10-445
Drawing No.
90M2.1
Drawn
23 of 59

Veterans
Administration