

HOOD INFORMATION

HOOD NO.	MODEL	LENGTH	MAX. COOKING TEMP.	EXHAUST PLENUM RISER(S)					SUPPLY PLENUM RISER(S)					HOOD CONSTRUCTION	HOOD CONFIG.		
				TOTAL EXH. CFM	WIDTH	LENG.	DIA.	CFM	S.P.	TOTAL SUP. CFM	WIDTH	LENG.	DIA.		CFM	S.P.	END TO END
1	6024 ND-2-PSP-FB	9' 0.00"	450 Deg.	2250	10"	21"		2250	-1.100"	2025					430 SS Where Exposed	LEFT	ALONE
2	6024 ND-2-PSP-FB	9' 0.00"	450 Deg.	2250	10"	21"		2250	-1.100"	2025					430 SS Where Exposed	RIGHT	ALONE
CAPTIVE AIR OR APPROVED EQUAL																	

CAPTIVE AIRE OR APPROVED EQUAL

HOOD INFORMATION

HOOD NO.	FILTER(S)			LIGHT(S)			UTILITY CABINET(S)				FIRE SYSTEM PIPING	HOOD HANGING WGHT
	TYPE	QTY.	HEIGHT	TYPE	WIRE GUARD	LOCATION	FIRE SYSTEM	SIZE	ELECTRICAL	SWITCHES		
1	Captrate Solo Filter wi	3	16"	16"	4	Incandescent Light Fxt	NO	Left	Ansul R102	3.0/3.0	EMS11183	723 LBS
2	Captrate Solo Filter wi	3	16"	16"	4	Incandescent Light Fxt	NO					595 LBS

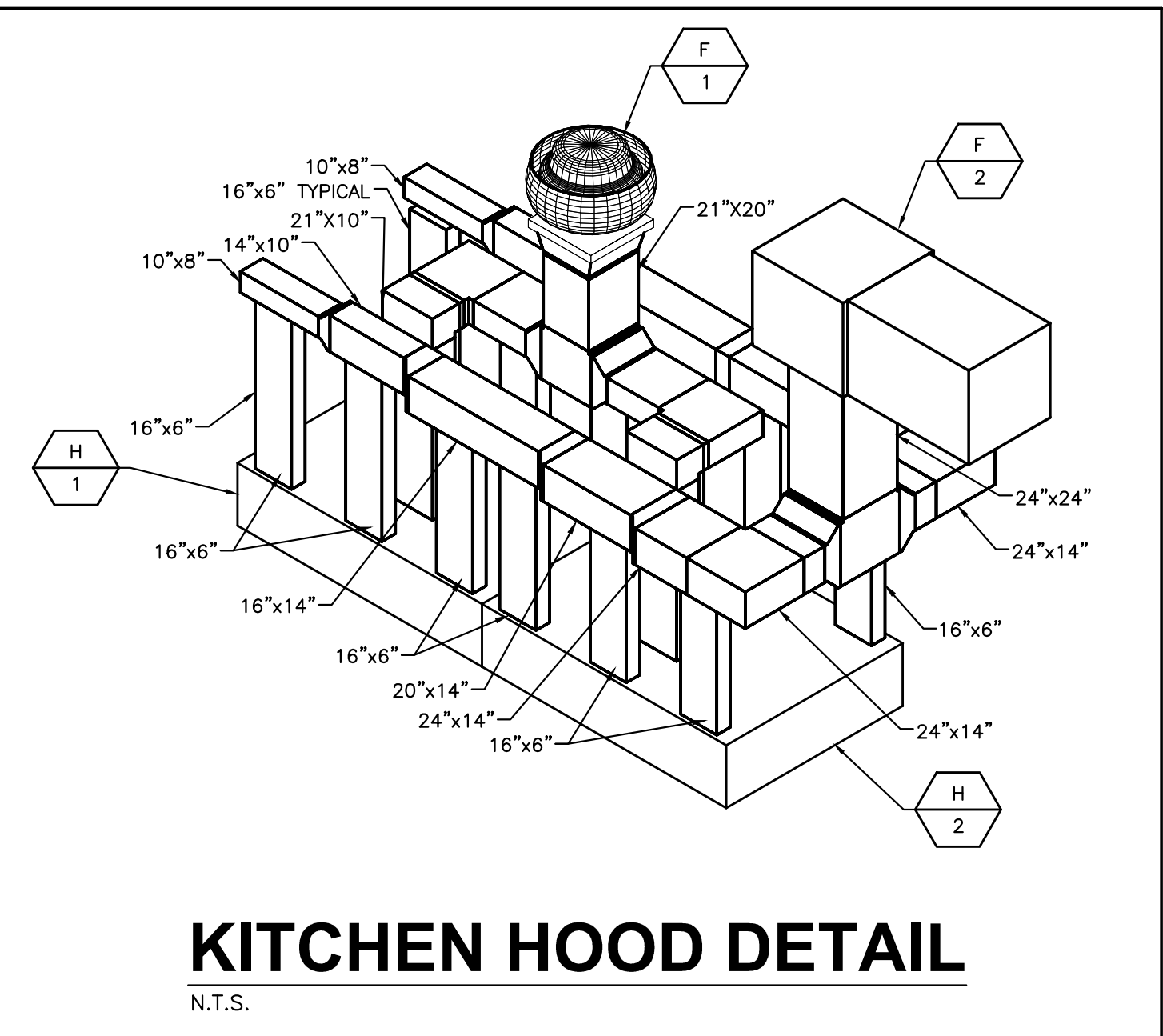
CAPTIVE AIRE OR APPROVED EQUAL

HOOD OPTIONS

HOOD NO.	OPTION			
1	FIELD WRAPPER	18.00"	High	Front, Left, Back
	FINISHED BACK- ISL/REV INSTALL	108.00"	Long	
2	FIELD WRAPPER	18.00"	High	Front, Right
	FINISHED BACK- ISL/REV INSTALL	108.00"	Long	

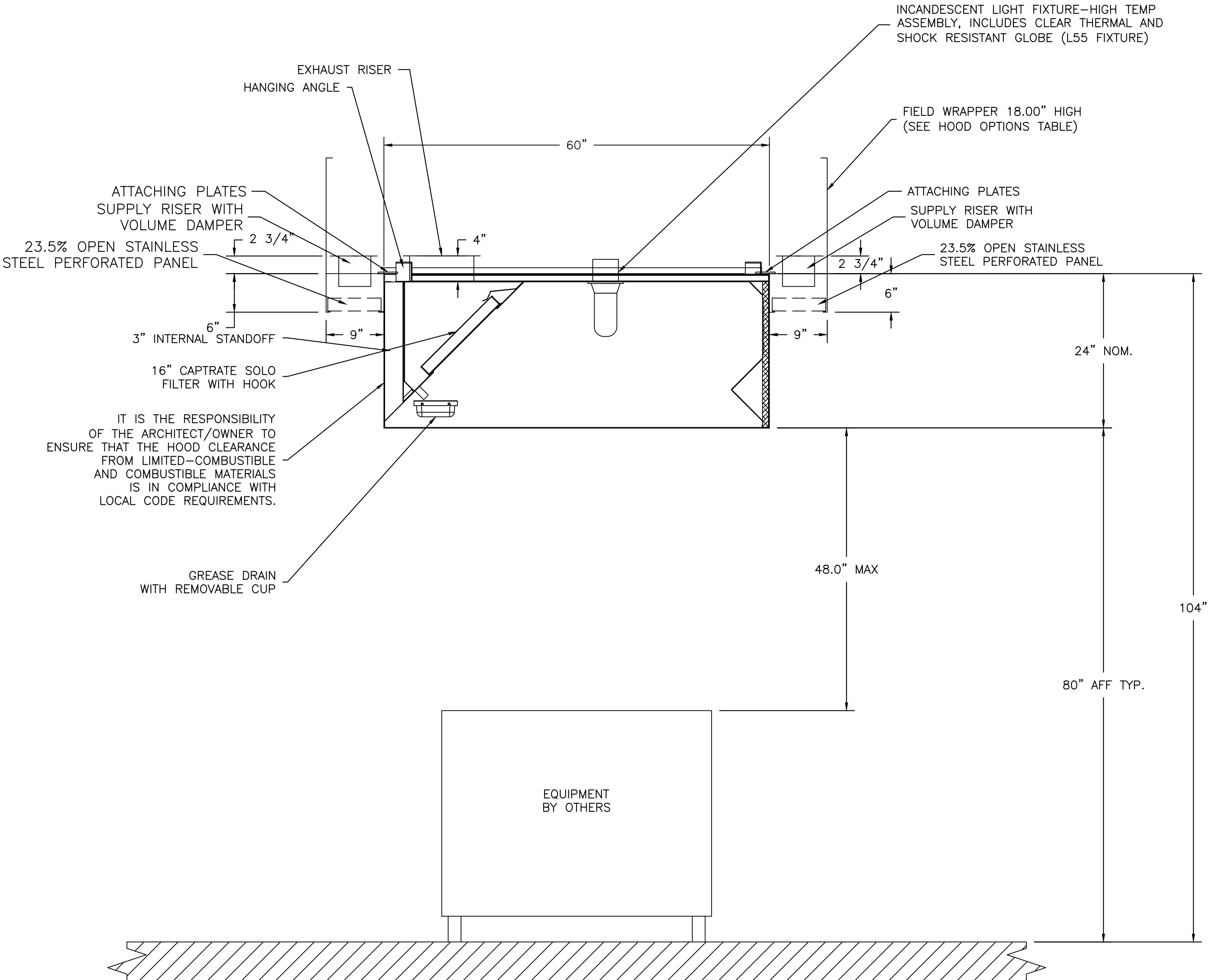
PERFORATED SUPPLY PLENUM(S)

HOOD NO.	POS.	LENGTH	WIDTH	HEIGHT	RISER(S)				
					WIDTH	LENG.	DIA.	CFM	S.P.
1	Back	120"	9"	6"	6"	16"		337	0.058"
					6"	16"		337	0.058"
	Front	120"	9"	6"	6"	16"		337	0.058"
					6"	16"		337	0.058"
2	Back	108"	9"	6"	6"	16"		337	0.058"
					6"	16"		337	0.058"
	Front	108"	9"	6"	6"	16"		337	0.058"
					6"	16"		337	0.058"

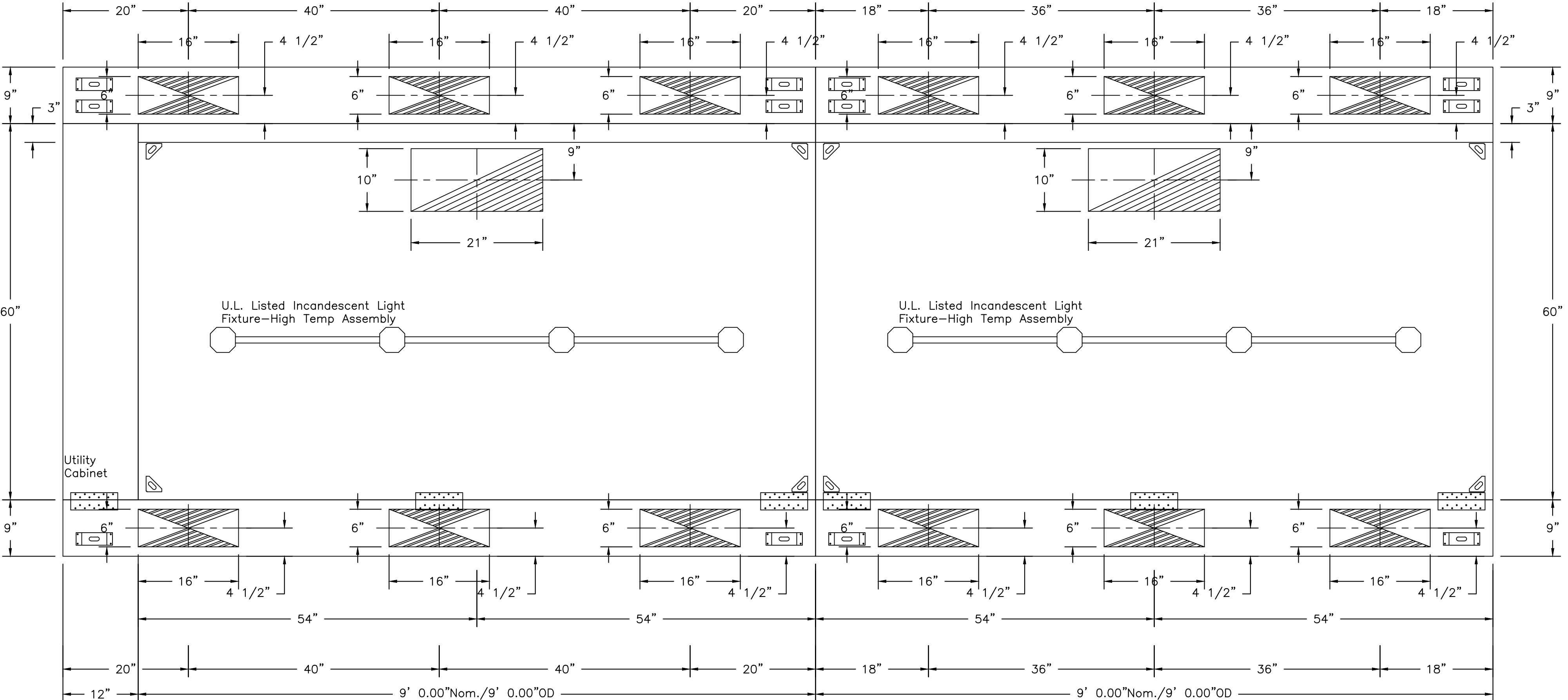


HOOD NOTES

- ① HOODS SHALL BE BUILT IN COMPLIANCE WITH UL 710 AND NFPA 96 AND ARE RECOGNIZED BY ONE OR MORE OF THE FOLLOWING: ETL SANITATION LISTED ETL LISTED FILE# 3054804-001
- ② 3 REQUESTS FOR APPROVED EQUALS SHALL BE SUBMITTED TO ENGINEER A MINIMUM OF 10 DAYS PRIOR TO BID.



SECTION VIEW - MODEL 6024ND-2-PSP-FB



PLAN VIEW - Hood #1  
9' 0.00" LONG 6024ND-2-PSP-FB

PLAN VIEW - Hood #2  
9' 0.00" LONG 6024ND-2-PSP-FB

KITCHEN HOOD SCHEDULES AND DETAILS - BUILDING 90

N.T.S.

WHORTON ENGINEERING, INC.  
HVAC - PLUMBING - PROCESS CONTROL

RANDALL WHORTON, P.E.  
PH 256/820-9897 FAX 256/820-9886  
ANNISTON, ALABAMA 36205

25 SUMMERALL GATE ROAD  
ANNISTON, ALABAMA 36205

WHORTON ENGINEERING PROJECT NO. 10159

ALABAMA REGISTERED PROFESSIONAL ENGINEER  
No. 14192  
CHARLES CRAIG MILLS

Revisions

Date

ALABAMA REGISTERED PROFESSIONAL ENGINEER  
No. 15978  
CHARLES CRAIG MILLS

MCE

MILLS-CONOLY ENGINEERING, P.C.

8218 Old Federal Road  
TELEPHONE: (334) 270-0010

Montgomery, AL 36117  
FAX: (334) 270-0040

CAVHCS

Central Alabama Veterans Health Care System

Approved:

Approved:

Approved:

Approved:

Approved:

Approved:

Approved:

Approved:

Drawing Title

KITCHEN HOOD SCHEDULES AND DETAILS - BUILDING 90

Safety Officer

Clinical Representative

Project Title

HVAC MODIFICATIONS TO BUILDINGS 83, 90, & 93 TUSKEGEE, ALABAMA

Building Number

90

Checked

RDW

Drawn

JAD

Date

12/21/10

Project No.

619-10-445

DRAWING NO.

90M3.6

Dwg. 32 of 59

Veterans Administration