

EXHAUST FAN INFORMATION

FAN UNIT NO.	FAN UNIT MODEL #	MODEL	TAG	CFM	S.P.	RPM	H.P.	Ø	VOLT	FLA	WEIGHT (LBS.)
1	NCA24HPFA	NCA24HPFA		4500	1.750	1075	3.000	3	460	4.7	237.42

CAPTIVE AIRE OR APPROVED EQUAL

HEATER/MUA FAN INFORMATION

FAN UNIT NO.	FAN UNIT MODEL #	BLOWER	HOUSING	TAG	CFM	S.P.	RPM	H.P.	Ø	VOLT	FLA	WEIGHT (LBS.)
2	A2-G15	G15-PB	A2		4050	1.000	751	2.000	3	460	3.0	360.60

CAPTIVE AIRE OR APPROVED EQUAL

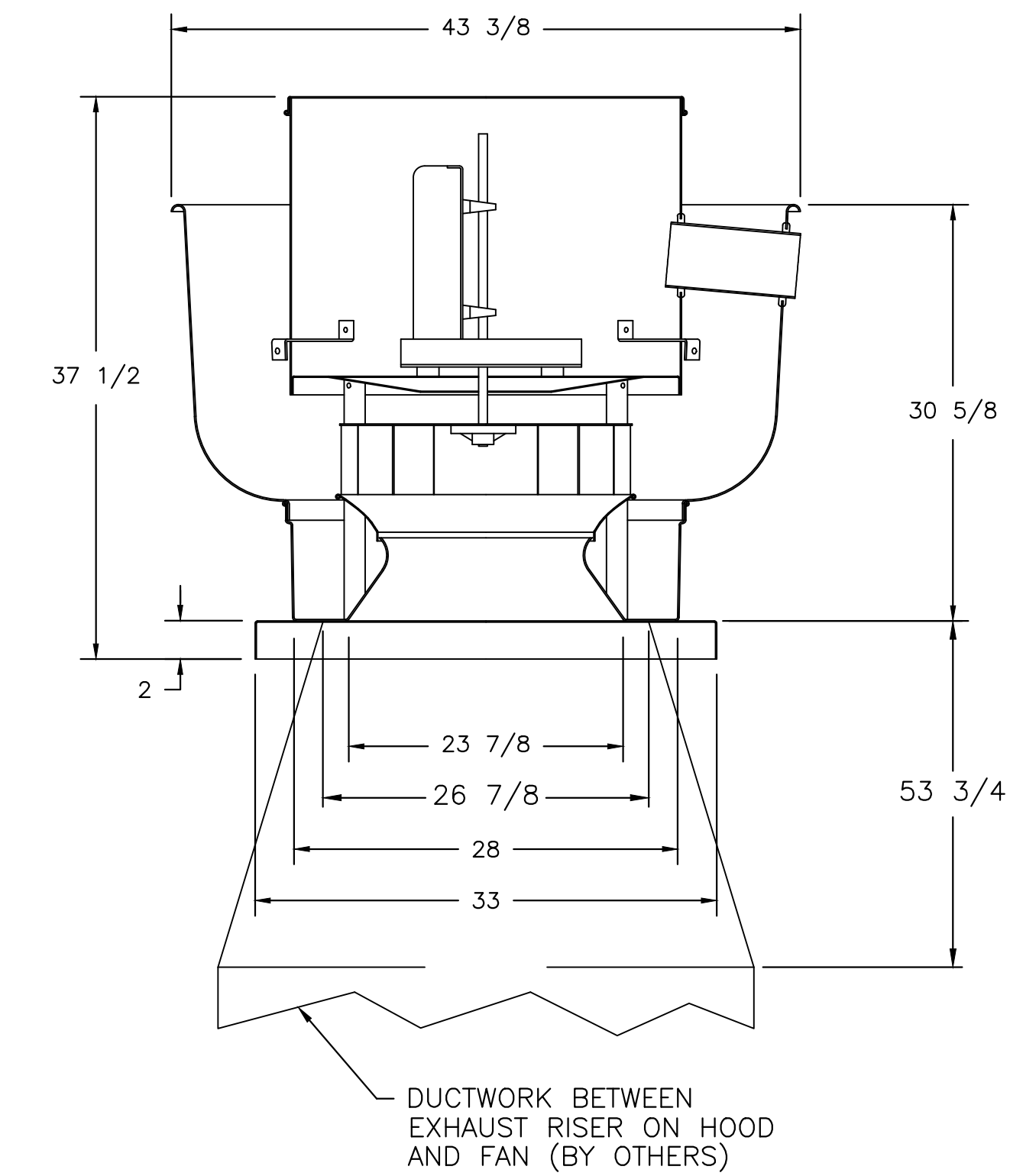
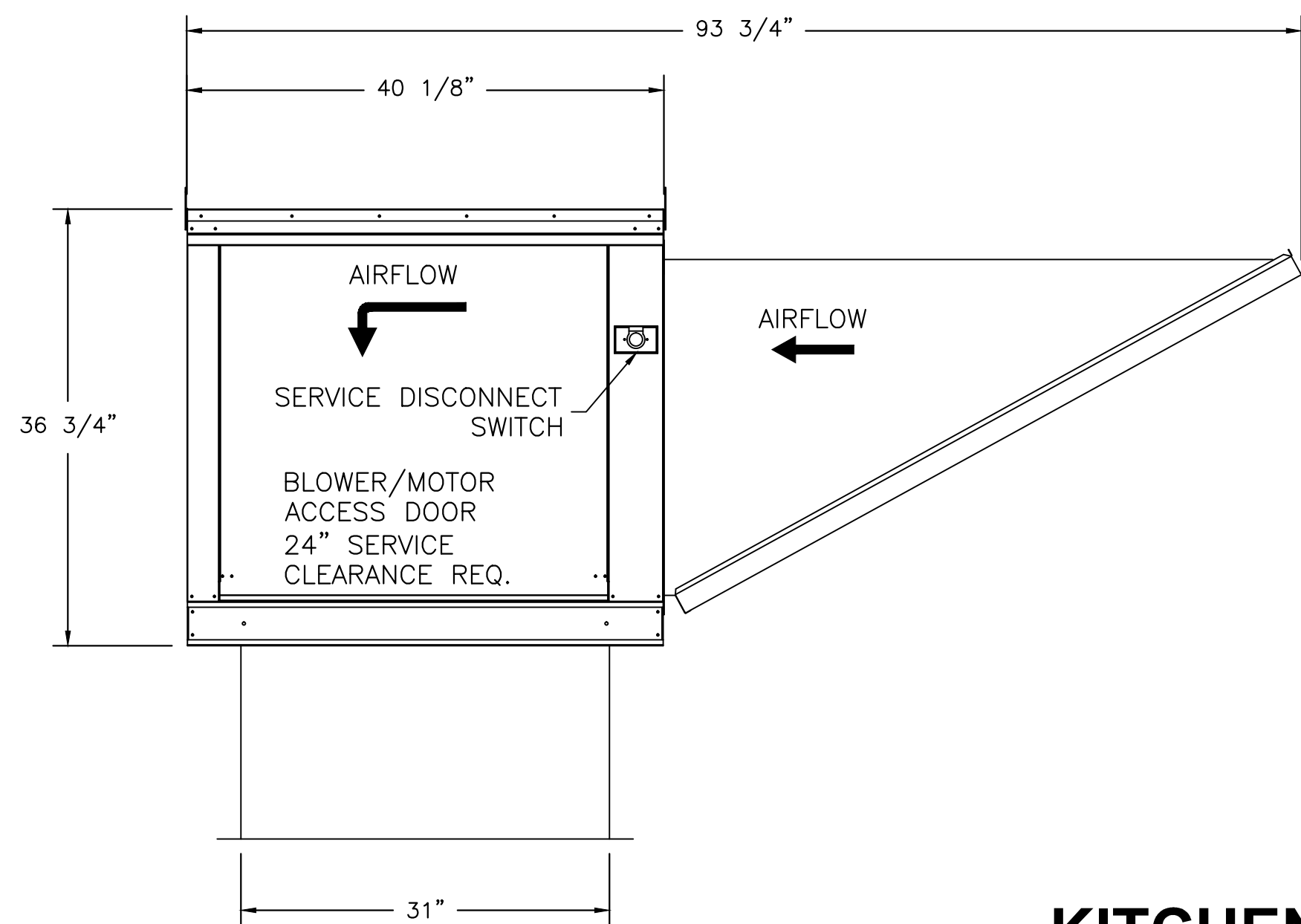
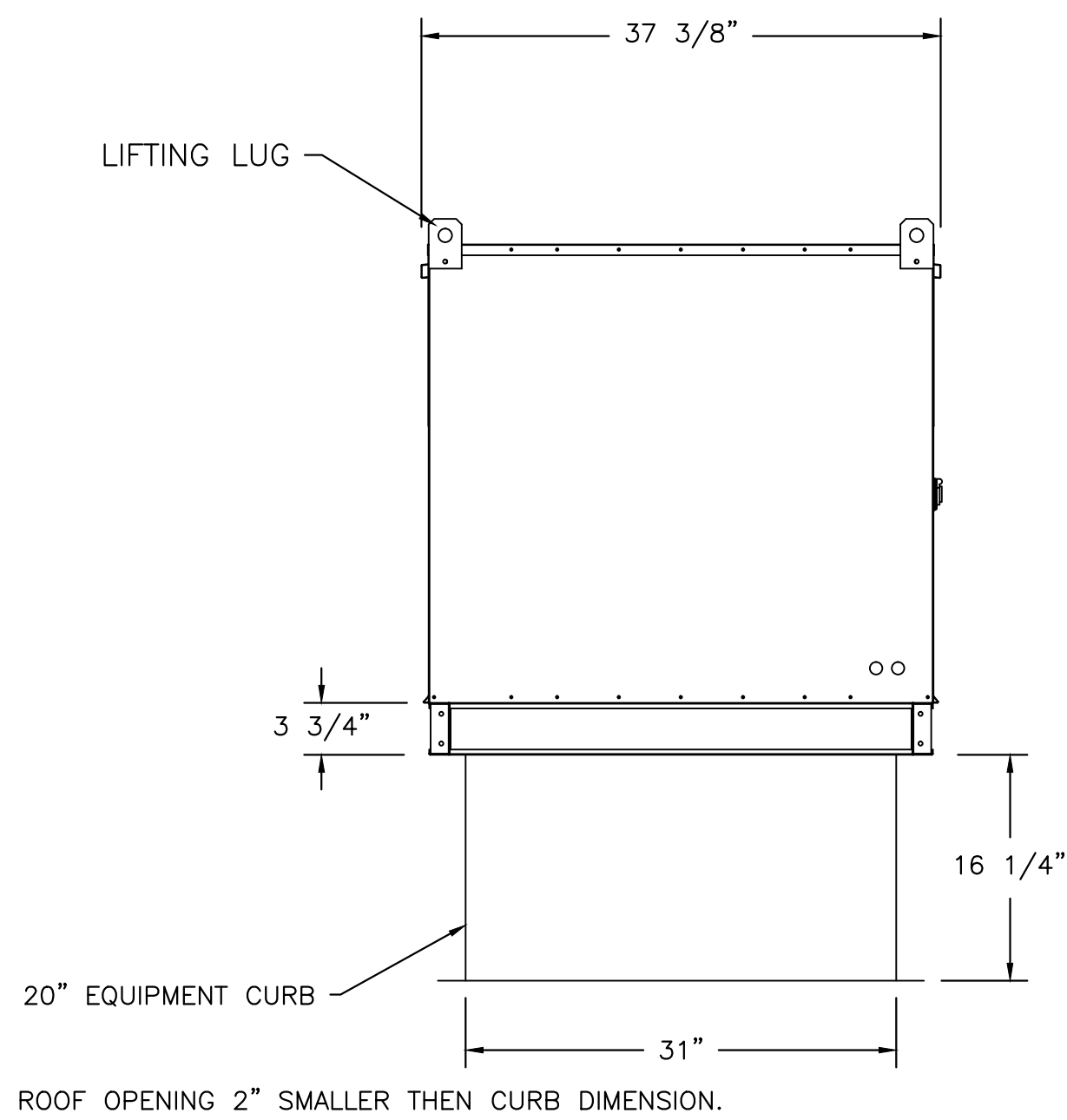
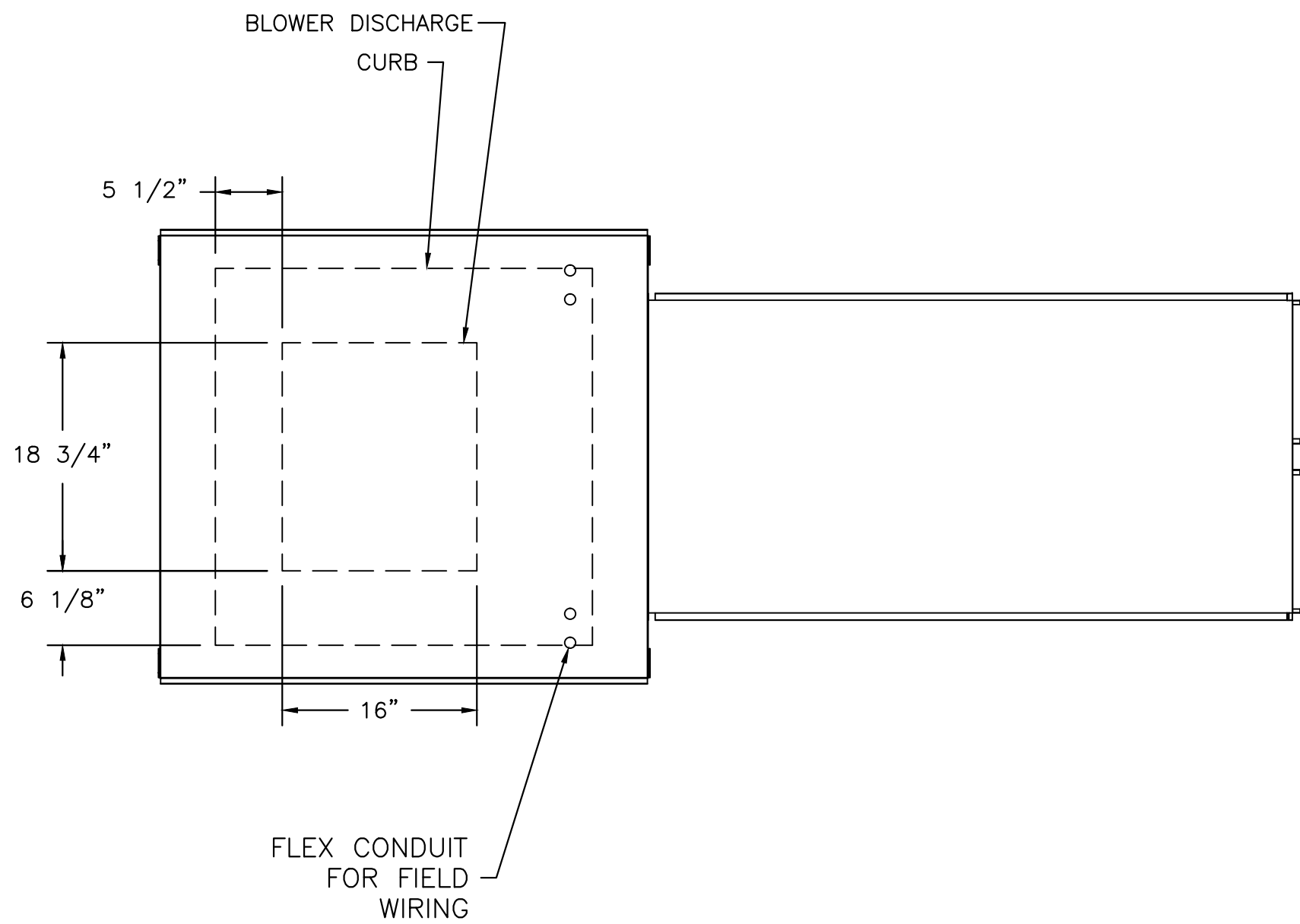
FAN OPTIONS

FAN UNIT NO.	OPTION (Qty. - Descr.)
1	1 - Grease Box

CURB ASSEMBLIES

NO.	ON FAN	ITEM	SIZE
1	# 1	Curb	31.500"W x 31.500"L x 20.000"H Hinged
2	# 2	Curb	31.000"W x 31.000"L x 20.000"H

FAN #2 A2-G15 - SUPPLY FAN
1. UNTEMPERED SUPPLY UNIT WITH 15" BLOWER IN SIZE #2 HOUSING
2. INTAKE HOOD WITH EZ FILTERS
3. DOWN DISCHARGE - AIR FLOW RIGHT -> LEFT



FAN #1 NCA24HPFA - EXHAUST FAN

FEATURES:

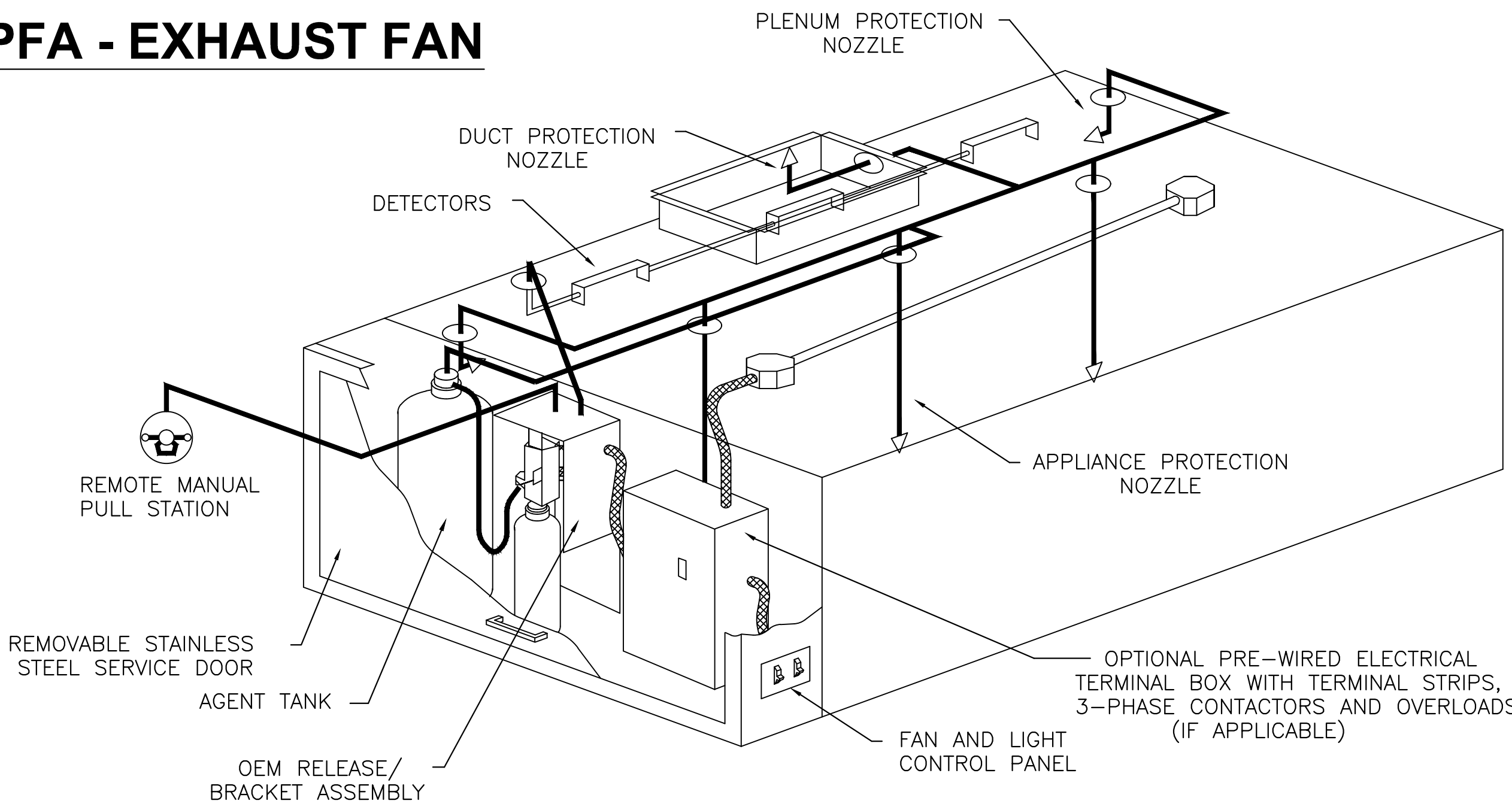
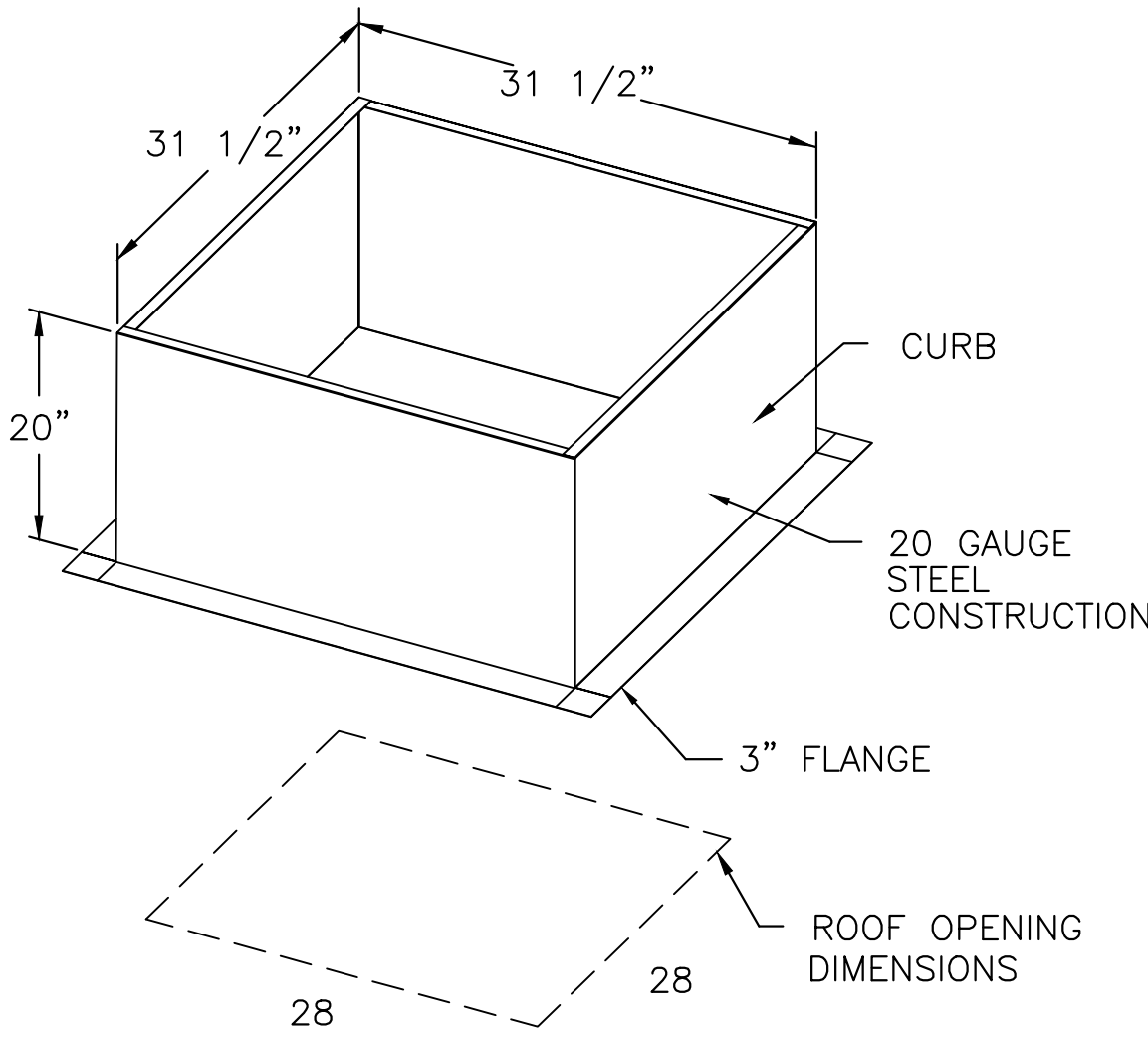
- ROOF MOUNTED FANS
- RESTAURANT MODEL
- UL705 AND UL762
- AMCA SOUND AND AIR CERTIFIED
- WIRING FROM MOTOR TO DISCONNECT SWITCH
- WEATHERPROOF DISCONNECT
- HIGH HEAT OPERATION 300°F (149°C)
- GREASE CLASSIFICATION TESTING

NORMAL TEMPERATURE TEST
EXHAUST FAN MUST OPERATE CONTINUOUSLY WHILE EXHAUSTING AIR AT 300°F (149°C) UNTIL ALL FAN PARTS HAVE REACHED THERMAL EQUILIBRIUM, AND WITHOUT ANY DETERIORATING EFFECTS TO THE FAN WHICH WOULD CAUSE UNSAFE OPERATION.

ABNORMAL FLARE-UP TEST
EXHAUST FAN MUST OPERATE CONTINUOUSLY WHILE EXHAUSTING BURNING GREASE VAPORS AT 600°F (316°C) FOR A PERIOD OF 15 MINUTES WITHOUT THE FAN BECOMING DAMAGED TO ANY EXTENT THAT COULD CAUSE AN UNSAFE CONDITION.

OPTIONS

GREASE BOX



TYPICAL ANSUL R-102 SYSTEM LAYOUT

KITCHEN HOOD EXHAUST FAN SCHEDULES AND DETAILS - BUILDING 90

N.T.S.

WHORTON ENGINEERING, INC.
HVAC - PLUMBING - PROCESS CONTROL
RANDALL WHORTON, P.E.
PH 256/820-9897 FAX 256/820-9898
25 SUMMERALL GATE ROAD
ANNISTON, ALABAMA 36205
WHORTON ENGINEERING PROJECT NO. 10159

Revisions	Date



MCE **MILLS-CONOLY**
ENGINEERING, P.C.
8218 Old Federal Road
TELEPHONE: (334) 270-0010
Montgomery, AL 36117
FAX: (334) 270-0040

CAVHCS
Central Alabama Veterans Health Care System

Approved:	Approved:	Drawing Title	Project Title	Date
Approved:	Approved:	KITCHEN HOOD EXHAUST FAN SCHEDULES AND DETAILS - BUILDING 90	HVAC MODIFICATIONS TO BUILDINGS 83, 90, & 93 TUSKEGEE, ALABAMA	12/21/10
Approved:	Approved:	Safety Officer	Building Number 90	Project No. 619-10-445
Approved:	Approved:	Clinical Representative	Checked RDW	Drawn JAD
			Location East Campus, Tuskegee, AL	DRAWING NO. 90M3.7 Dwg. 33 of 59

Veterans Administration