

1
P3.1
EXIST. CHILLER
NOT TO SCALE



2
P3.1
ABANDONED LINES
NOT TO SCALE



3
P3.1
EXIST. FIRE SPRINKLER LINE
NOT TO SCALE



4
P3.1
EXIST. ELECTRICAL PANELS
NOT TO SCALE



5
P3.1
EXIST. UTILITY TRENCH
NOT TO SCALE



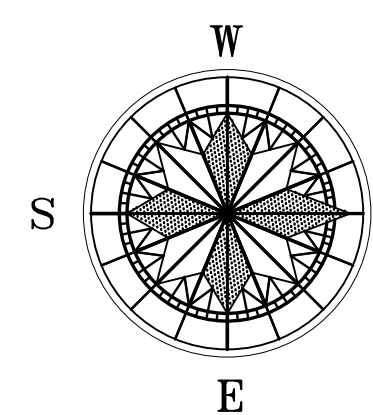
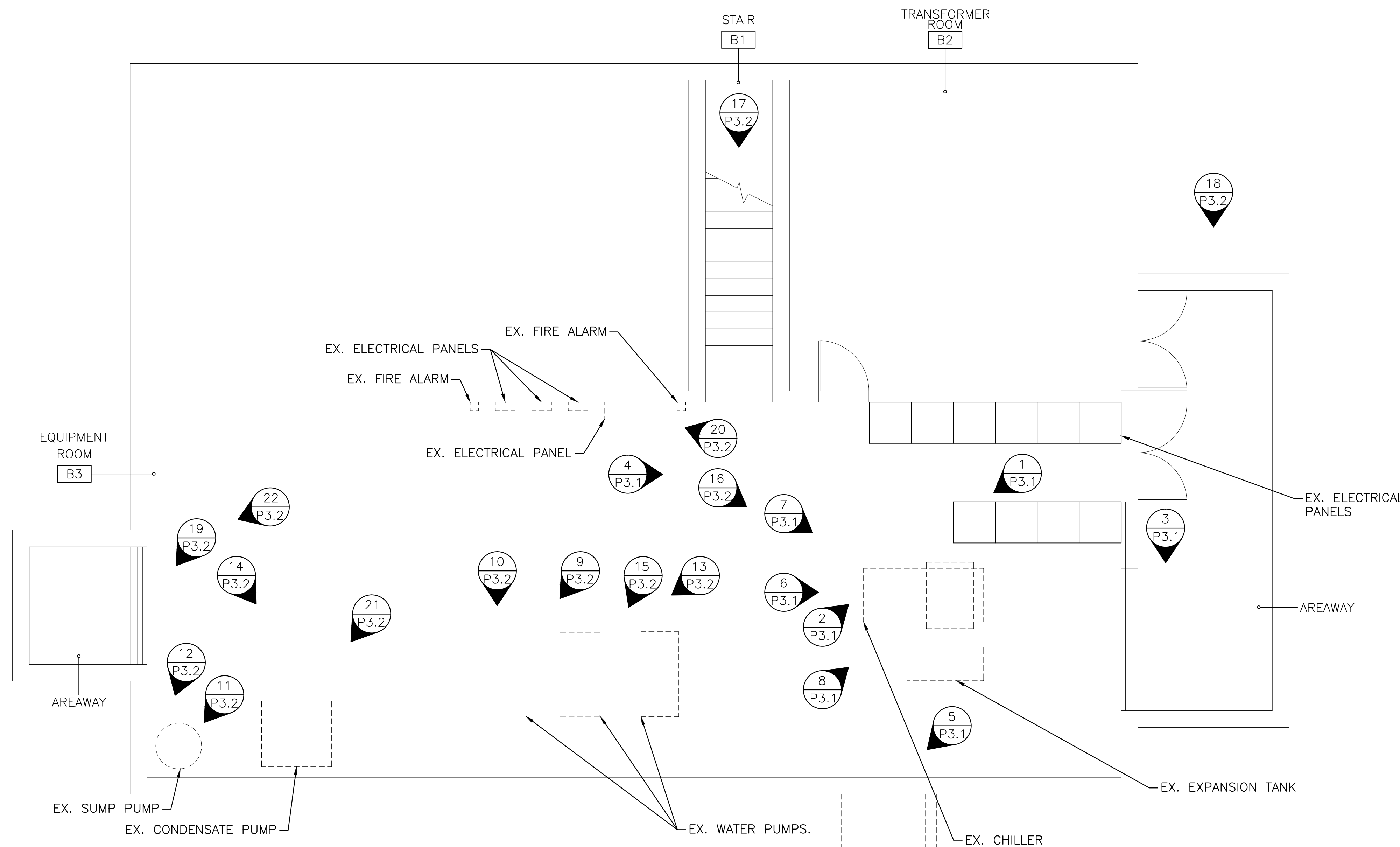
6
P3.1
ABANDONED LINES
NOT TO SCALE



6
P3.1
ABANDONED LINES AND CHILLER
NOT TO SCALE



8
P3.1
EXIST. EXPANSION TANK
NOT TO SCALE



EXISTING PLUMBING PLAN AND DETAILS - BUILDING 90
SCALE: 1/4"=1'-0"

WHORTON ENGINEERING, INC.
HVAC - PLUMBING - PROCESS CONTROL

RANDALL WHORTON, P.E.
PH 256/820-9897 FAX 256/820-9886

25 SUMMERALL GATE ROAD
ANNISTON, ALABAMA 36205

WHORTON ENGINEERING PROJECT NO. 10159

Revisions	Date

MCE

MILLS-CONOLY
ENGINEERING, P.C.

8218 Old Federal Road
TELEPHONE: (334) 270-0010

Montgomery, AL 36117
FAX: (334) 270-0040

Central Alabama Veterans Health Care System

Approved:	Approved:	Drawing Title	Project Title	Date
Approved:	Approved:	EXISTING PLUMBING PLAN AND DETAILS - BUILDING 90	HVAC MODIFICATIONS TO BUILDINGS 83, 90, & 93 TUSKEGEE, ALABAMA	12/21/10
Approved:	Approved:	Safety Officer	Building Number 90	Project No. 619-10-445
Approved:	Approved:	Clinical Representative	Checked RDW	DRAWING NO. 90P2.3
			Drawn JAD	Dwg. 43 of 59
			Location East Campus, Tuskegee, AL	Veterans Administration