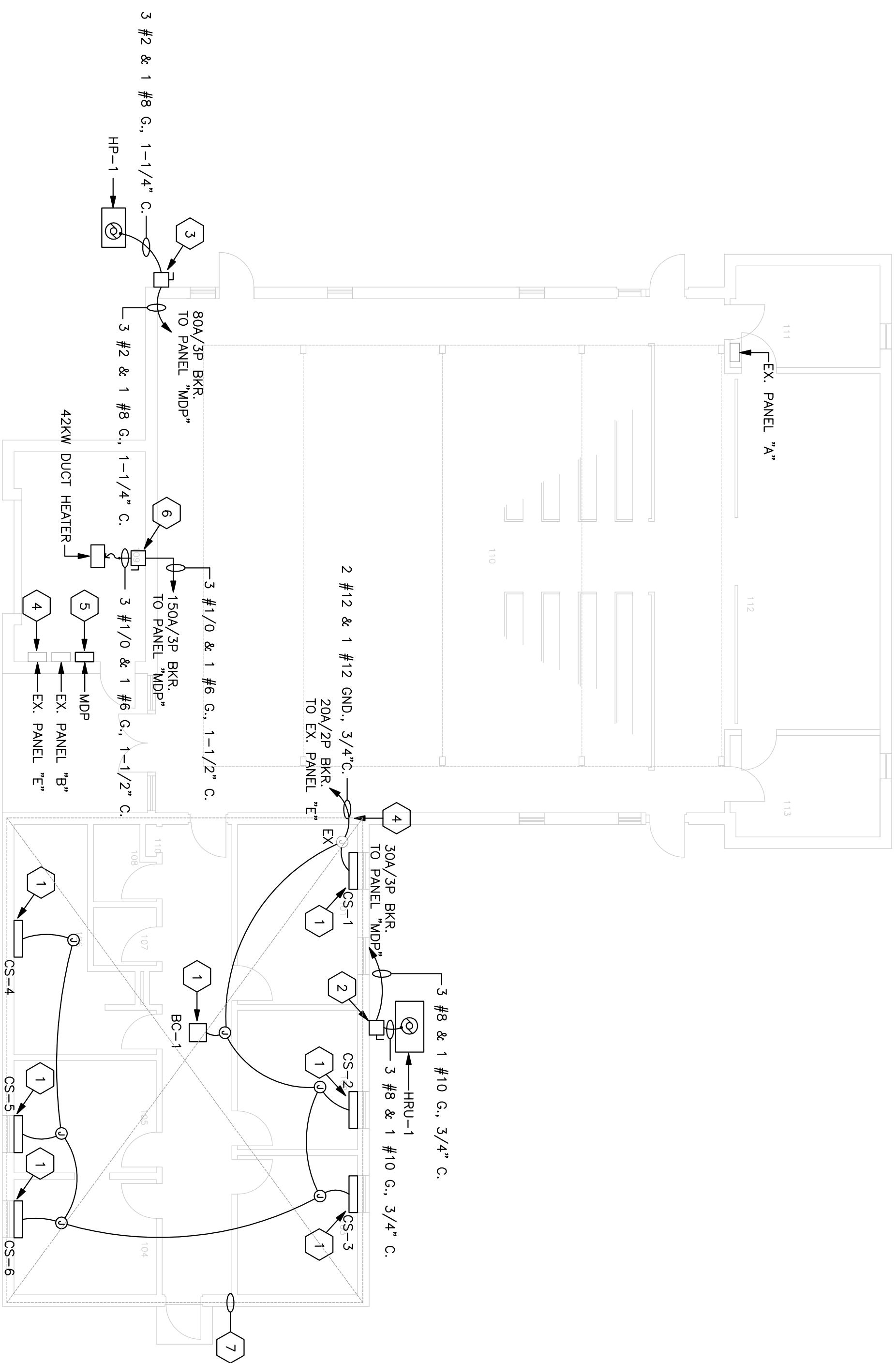
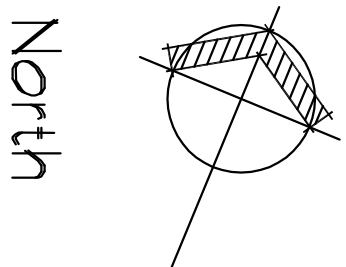


KEYED DEMOLITION NOTES:

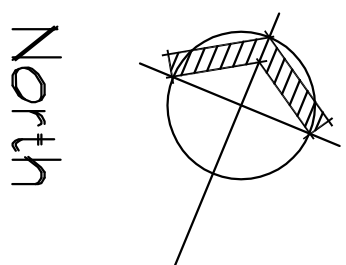
# BUILDING 93, FIRST FLOOR DEMOLITION PLAN

SCALE: 1/8" (0.32CM) = 1'-0" (30.5CM)



## BUILDING 93, FIRST FLOOR PLAN

SCALE: 1/8" (0.32CM) = 1'-0" (30.5CM)



# PANELBOARD SCHEDULE

PANEL: MDP MANF: 400 MB SERVICE: 208/120V 3Ø 4W

TYPE: NODD 442/400 CU A.I.C.: 65 KA MOUNTED: SURFACE

| DESCRIPTION             | VOLT-AMP LOAD |         |         |      | CIRCUIT BREAKERS |      |      |      | VOLT-AMP LOAD |         |         |                    |
|-------------------------|---------------|---------|---------|------|------------------|------|------|------|---------------|---------|---------|--------------------|
|                         | PHASE A       | PHASE B | PHASE C | TRIP | TRIP             | TRIP | TRIP | TRIP | PHASE A       | PHASE B | PHASE C | DESCRIPTION        |
| DUC# HEATER             | 14000         | 14100   | 14200   | 150  | 3                | 1    | 2    | 20   | 400           | 400     | 400     | 1/BHP EXHAUST FAN  |
|                         |               |         |         |      |                  |      |      |      |               |         |         |                    |
| ---                     | ---           | ---     | ---     | ---  | ---              | ---  | ---  | ---  | ---           | ---     | ---     | 5/0                |
| ---                     | ---           | ---     | ---     | ---  | ---              | ---  | ---  | ---  | ---           | ---     | ---     | 1/20HP UNIT HEATER |
| ---                     | ---           | ---     | ---     | ---  | ---              | ---  | ---  | ---  | ---           | ---     | ---     | BC CONTROLLER      |
| HRU                     | 3550          | 3550    | 3550    | 30   | 3                | 13   | 14   | 100  | 3             | 5600    | 5600    | EX. PANEL "E"      |
| ---                     | ---           | ---     | ---     | ---  | ---              | ---  | ---  | ---  | ---           | ---     | ---     | ---                |
| ---                     | ---           | ---     | ---     | ---  | ---              | ---  | ---  | ---  | ---           | ---     | ---     | ---                |
| EX. PANEL "A"           | 6125          | 6125    | 6125    | 70   | 3                | 19   | 20   | 20   | 1             | ---     | ---     | FACE               |
| ---                     | ---           | ---     | ---     | ---  | ---              | ---  | ---  | ---  | ---           | ---     | ---     | SPACE              |
| ---                     | ---           | ---     | ---     | ---  | ---              | ---  | ---  | ---  | ---           | ---     | ---     | SPACE              |
| EX. PANEL "B"           | 4805          | 4805    | 4805    | 50   | 3                | 25   | 26   | 20   | 1             | ---     | ---     | SPACE              |
| ---                     | ---           | ---     | ---     | ---  | ---              | ---  | ---  | ---  | ---           | ---     | ---     | SPACE              |
| ---                     | ---           | ---     | ---     | ---  | ---              | ---  | ---  | ---  | ---           | ---     | ---     | SPACE              |
| SHIP AIR HANDLER        | 2010          | 2010    | 2010    | 40   | 3                | 31   | 32   | ---  | ---           | ---     | ---     | SPACE              |
| ---                     | ---           | ---     | ---     | ---  | ---              | ---  | ---  | ---  | ---           | ---     | ---     | SPACE              |
| HEAT PUMP HP-1          | 7850          | 7850    | 7850    | 80   | 3                | 37   | 38   | ---  | ---           | ---     | ---     | SPACE              |
| ---                     | ---           | ---     | ---     | ---  | ---              | ---  | ---  | ---  | ---           | ---     | ---     | SPACE              |
| ---                     | ---           | ---     | ---     | ---  | ---              | ---  | ---  | ---  | ---           | ---     | ---     | SPACE              |
| SUB TOTAL               | 35510         | 35510   | 35510   | ---  | ---              | ---  | ---  | ---  | ---           | ---     | ---     | ---                |
| CONNECTED LOAD PHASE A: | 48870         | 48870   | 48870   | ---  | ---              | ---  | ---  | ---  | 10300         | 10200   | 10340   | SUB TOTAL          |
| CONNECTED LOAD PHASE B: | 48910         | 48910   | 48910   | ---  | ---              | ---  | ---  | ---  | ---           | ---     | ---     | ---                |
| TOTAL CONNECTED LOAD :  | 146550        | 146550  | 146550  | ---  | ---              | ---  | ---  | ---  | ---           | ---     | ---     | ---                |


PANELBOARD NOTES:  
PROVIDE LOCK ON BREAKER FOR FACE.

KEYED NOTES:

1. — SEE MECHANICAL FOR EXACT LOCATION
2. — INSTALL NEW 100A/3P, 208V, 3P H.D. SAFETY SWITCH IN A NEMA 3R ENCLOSURE. FUSE AT 30A WITH D.E.I.T.O. FUSES
3. — INSTALL NEW 100A/3P, 208V, 3P H.D. SAFETY SWITCH IN A NEMA 3R ENCLOSURE. FUSE AT 30A WITH D.E.I.T.O. FUSES
4. — INTERFEE EXISTING HOMERUN TO EXISTING PANEL "E". INSTALL NEW 20A/2P BREAKER IN EXISTING PANEL "E".  
NEW CIRCUIT BREAKER SHALL MATCH EXISTING CIRCUIT BREAKER TYPE AND RATINGS. RETYPE PANELBOARD SCHEDULE TO REFLECT CIRCUIT MODIFICATIONS.
5. — INSTALL NEW 400A MBS 120/208V, 3P, 4W PANELBOARD, MODIFY AND EXTEND FEEDERS, AND MAKE ALL CONNECTIONS AS REQUIRED. SEE PANELBOARD SCHEDULE THIS SHEET FOR DETAILS.
6. — INSTALL NEW 200A/3P, 208V, 3P H.D. SAFETY SWITCH. MAKE ALL CONNECTIONS AS REQUIRED.
7. — REPLACE EXISTING ROOF COMPLETE WITH MEMBRANE ROOF. SEE SPECIFICATIONS, DEDUCTIVE ALTERNATE NO. 3. PATCH ROOF IN LEFT OF REPLACEMENT.

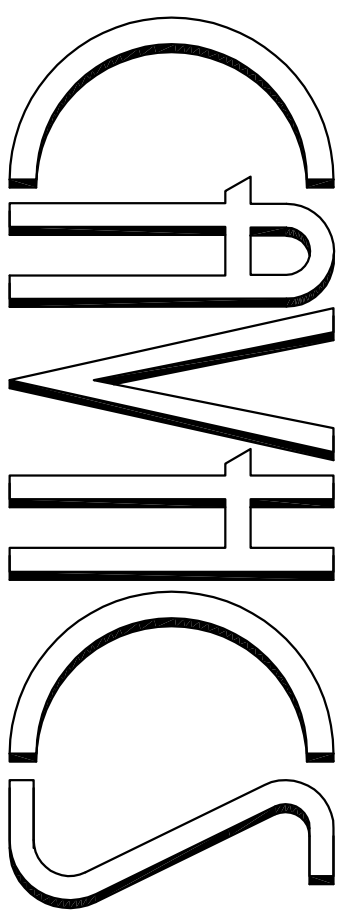
|                            |  |
|----------------------------|--|
| <p><b>Observations</b></p> |  |
| <p><b>Results</b></p>      |  |



**MCE**  **MILLS-CONOLLY**  
**ENGINEERING, P.C.**

8218 Old Federal Road  
Montgomery, AL 36117

TELEPHONE: (334) 270-0010  
FAX: (334) 270-0040



Central Alabama Veterans Health Care System

|              |
|--------------|
| ഭൂമിശാസ്ത്രം |
| ഭൂമിശാസ്ത്രം |
| ഭൂമിശാസ്ത്രം |
| ഭൂമിശാസ്ത്രം |
| ഭൂമിശാസ്ത്രം |

**Boarding Title**  
**BUILDING 93, FIRST FLOOR DEMOLITION**  
**PLAN, FIRST FLOOR PLAN, PANELBOARD**  
**SCHEDULE AND NOTES**

**Boarding @Drawn**

**@Michael Reggius@nrcfire**

|                 |  |          |          |
|-----------------|--|----------|----------|
| Project Title   | HVAC MODIFICATIONS TO BUILDINGS 83, 90, & 93 TUSKEGEE, ALABAMA |          |          |
| Building Number | 93   | Grounded | Wireless |
| Location        | East Campus, Tuskegee, AL                                      |          |          |

|                  |                           |  |
|------------------|---------------------------|--|
| Date<br>12/21/10 | Project No.<br>619-10-445 | Drawing No.<br>93E1.1<br>Dwg. 59 of 59 |
|------------------|---------------------------|--|

## Veterans Administration