

three inches = one foot
one and one-half inches = one foot
one inch = one foot
three-quarters inch = one foot
one-half inch = one foot
three-eighths inch = one foot
one-quarter inch = one foot
one-eighth inch = one foot

A

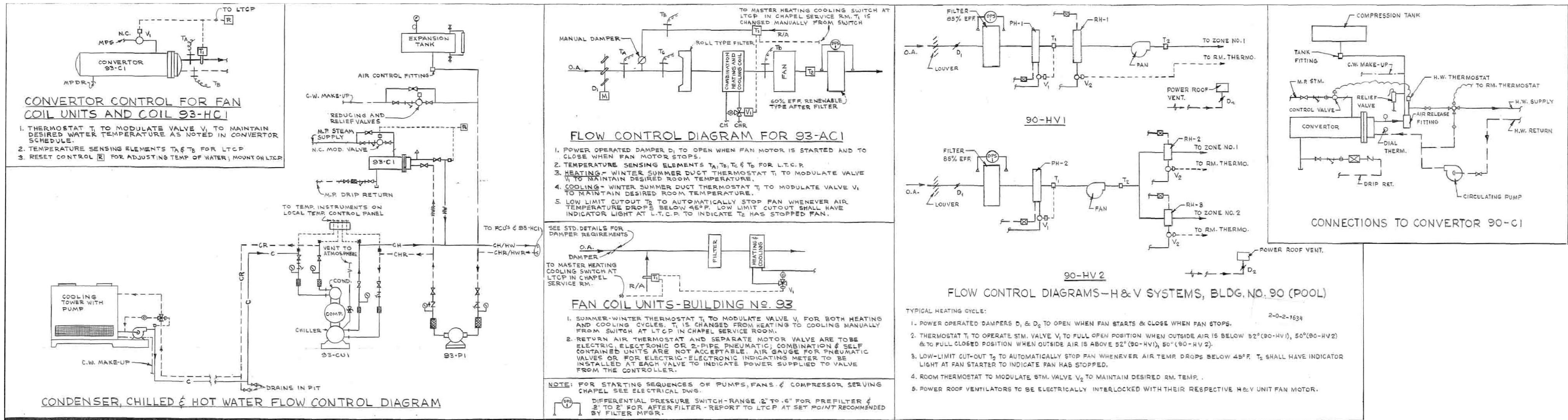
B

C

D

E

F



REFERENCE BUILDING 90

SCHEDULE OF HEATING , VENTILATING & AIR CONDITIONING UNITS														
UNIT №	AREA SERVED	C.F.M.	MIN. % OUTAIR	TYPE UNIT	TYPE FILTER	PREHEAT COIL №	LIQUID №	COOLING COIL №	RAN MOTOR NO. №	S.P. LOSS (IN. WATER) PH-VOL. PRE-FILTER AFTER-FILTER TOTAL	DRIVE	MIN WHEEL DIA.	LOCATION	REMARKS
90-HV1	THERAPEUTIC POOL	2640	100	HORIZ.	SEE MANUAL CONTROL & ASSEMBLY SHEET	PH-1	—	—	1	3-208 .25 —	1/8	V-BELT 9"	MECH. EQUIP. RM.	FLOOR MOUNTED
90-HV2	POOL OFFICE, ETC.	2180	100	HORIZ.		PH-2	—	—	1	3-208 .25 —	1/4	9"	MECH. EQUIP. RM.	FLOOR MOUNTED
93-AC1	CHAPEL	5040	50	HORIZ.	✓	93-HC1	—	93-HC1	5	3-208 .45 .60"	2 1/2	16"	CHAPEL SERVICE RM.	FLOOR MOUNTED

PRESSURE REDUCING VALVE SCHEDULE					
D.D.V. NO.	LOCATION	STEAM P.S.I.G. INLET	PRESS. P.S.I.G. OUTLET	CAPACITY LBS. STEAM PER HOUR	SERVICE
93-PRV1	CHAPEL SERVICE RM.	60	30	330	93-HV1 & 93-C1

REFERENCE BUILDING 90

EXISTING 1960 ORIGINAL HVAC SCHEDULES AND DETAILS - BUILDING 93

NOT TO SCALE

Revisions	Date
-----------	------

MCE **MILLS-CONOLY**
ENGINEERING, P.C.
8218 Old Federal Road
TELEPHONE: (334) 270-0010
Montgomery, AL 36117
FAX: (334) 270-0040

Central Alabama Veterans Health Care System

Approved:	Approved:	Drawing Title	Project Title	Date
Approved:	Approved:	EXISTING 1960 ORIGINAL HVAC SCHEDULES AND DETAILS - BUILDING 93	HVAC MODIFICATIONS TO BUILDINGS 83, 90, & 93 TUSKEGEE, ALABAMA	12/21/10
Approved:	Approved:	Safety Officer	Building Number 93	Project No. 619-10-445
Approved:	Approved:	Clinical Representative	Checked RDW	Drawn JAD
			Location East Campus, Tuskegee, AL	Drawing No. 93M1.2
				Page 46 of 59

Veterans Administration