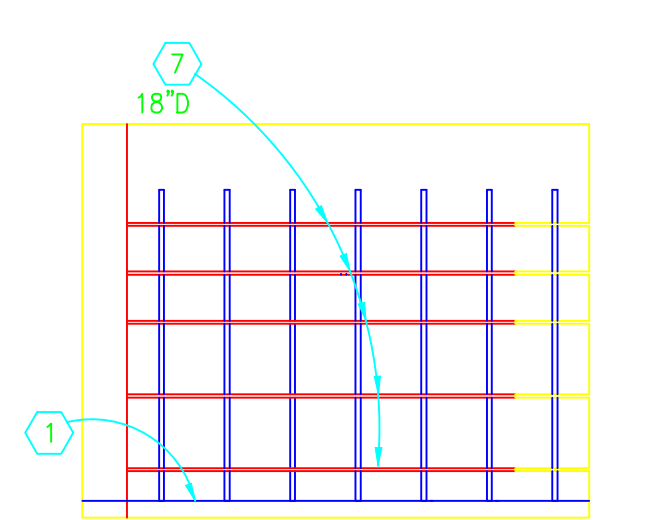


ROOM FINISH SCHEDULE											
NO.	ROOM	FLOOR	BASE		WALLS		CEILING		REMARKS		
			VINYL COMPOSITION TILE	CARPET	CONCRETE	EXISTING	VINYL	CARPET	EXISTING	NEW FINISH	EXISTING FINISH REMAINS PATCH TO MATCH WHERE REQ'D DUE TO DEMOLITION OR NEW CONSTRUCTION. NATURAL BREAK (CORNER) TO NATURAL BREAK (CORNER)
6	RECEPTION										
6A	WAITING										
6B	CLEAN STORAGE										
6C	TECH OFFICE										
6D	TECH OFFICE										
6E	TECH OFFICE										
6F	TECH OFFICE										
7	SPD STORAGE										
7A	FITTING ROOM/OFFICE										
7B	FITTING ROOM/OFFICE										
7C	FITTING ROOM/OFFICE										
7D	FITTING ROOM/OFFICE										
7E	EXAM/OFFICE										
8	AUDIO EXAM SUITE										PARENT ROOM FINISHES LISTED
9	AUDIO EXAM SUITE										PARENT ROOM FINISHES LISTED
10	AUDIO EXAM SUITE										PARENT ROOM FINISHES LISTED
11	MECHANICAL										PARENT ROOM FINISHES LISTED
C01	HALL										
C01A	LINEN STORAGE										
C01B	PROSTHETICS STORAGE										
C02	EXIT PASSAGEWAY										
COW	CORRIDOR										
COWA	SOILED STORAGE										
COC	CORRIDOR										

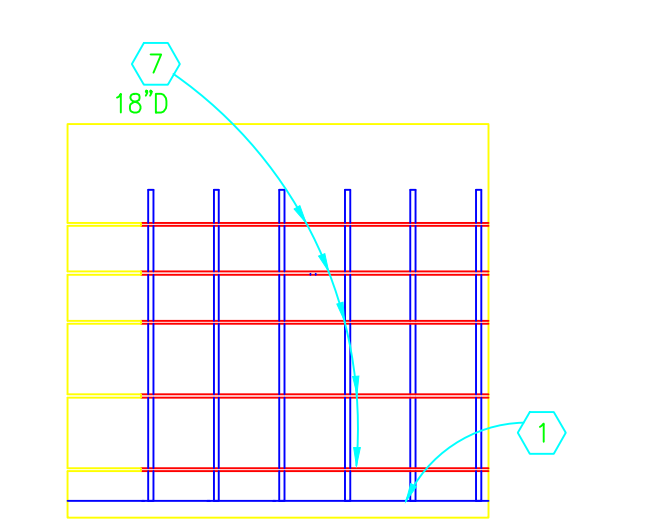
DOOR SCHEDULE									
NO.	SIZE	TYPE	FRAME ELEV.	DETAIL	HDWR GROUP	LABEL	REMARKS		
023	3'-0" X 7'-0" X 1 3/4"	B	HM2	14/A7	52PW				
6	3'-0" X 7'-0" X 1 3/4"	A	HM1	5/A7	13				
6A	3'-0" X 7'-0" X 1 3/4"	A	HM3	5/A7	33X	20 MIN			
6B	3'-0" X 7'-0" X 1 3/4"	A	HM1	5/A7	33D	20 MIN			
6C	3'-0" X 7'-0" X 1 3/4"	A	HM1	5/A7	13	20 MIN			
6D	3'-0" X 7'-0" X 1 3/4"	A	HM1	5/A7	13	20 MIN			
6E	3'-0" X 7'-0" X 1 3/4"	A	HM1	5/A7	13	20 MIN			
6F	3'-0" X 7'-0" X 1 3/4"	A	HM1	5/A7	13	20 MIN			
7	3'-0" X 7'-0" X 1 3/4"	A	HM1	5/A7	33D				
7A	3'-0" X 7'-0" X 1 3/4"	A	HM1	5/A7	13				
7B	3'-0" X 7'-0" X 1 3/4"	A	HM1	5/A7	13				
7C	3'-0" X 7'-0" X 1 3/4"	A	HM1	5/A7	13				
7D	3'-0" X 7'-0" X 1 3/4"	A	HM1	5/A7	13				
7E	3'-0" X 7'-0" X 1 3/4"	A	HM1	5/A7	13				
8	3'-0" X 7'-0" X 1 3/4"	A	HM1	5/A7	33X				
9	3'-0" X 7'-0" X 1 3/4"	A	HM1	5/A7	33X				
10	3'-0" X 7'-0" X 1 3/4"	A	HM1	5/A7	33X				
11	3'-0" X 7'-0" X 1 3/4"	A	HM2	5/A7	34				
C01	3'-0" X 7'-0" X 1 3/4"	A	HM1	5/A7	33X	20 MIN			
C01A	3'-0" X 7'-0" X 1 3/4" (2)	A	HM1	5/A7	23P				
C01B	3'-0" X 7'-0" X 1 3/4" (2)	A	HM1	5/A7	23P				
C01C	3'-0" X 7'-0" X 1 3/4"	B	HM2	8/A7	52PW				
C02A	3'-0" X 7'-0" X 1 3/4"	A	HM1	5/A7	34	45 MIN			
C02B	3'-6" X 7'-0" X 1 3/4"	B	HM2	18/A7	52		VERIFY EXIST. OPG. SIZE		
C02C	3'-0" X 7'-0" X 1 3/4"	B	HM2	18/A7	34	45 MIN			
C02D	3'-0" X 7'-0" X 1 3/4"	B	HM2	8/A7	9/A7	52PW			
COWA	3'-0" X 7'-0" X 1 3/4"	A	HM1	5/A7	33DP	20 MIN			

EQUIPMENT LEGEND

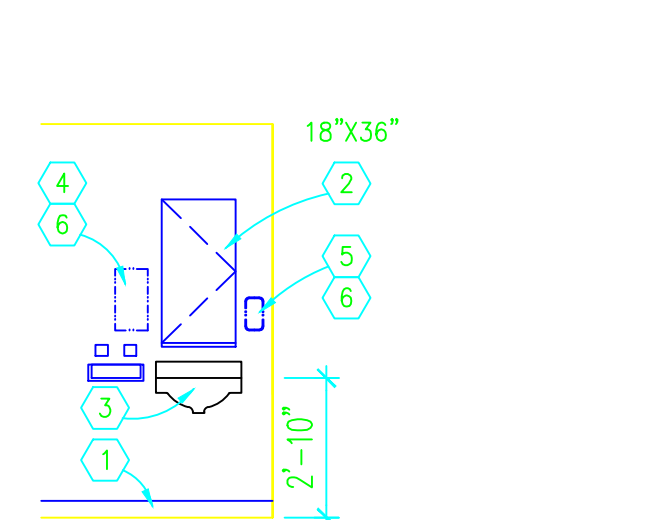
- MODULAR WORKSURFACE.
- TRANSITION WORKSURFACE.
- COUNTER TOP & SUPPORT WITH TASK LIGHT.
- 38" HIGH POWERED FRAME WITH ONE (1) 16" HIGH FABRIC FACE TILE & ONE (1) 16" HIGH TACKABLE TILE STAFF SIDE; TWO (2) 16" HIGH FABRIC FACE TILES GUEST SIDE.
- 38" HIGH POWERED TRANSITION SURFACE FRAME WITH ONE (1) 20" HIGH FABRIC FACE TILE EACH SIDE.
- 62" HIGH POWERED FRAME WITH ONE (1) 24" HIGH FABRIC FACE TILE, ONE (1) 16" HIGH TACKABLE TILE & ONE (1) 16" HIGH FABRIC FACE TILE EACH SIDE.
- FLIPPER DOOR UNIT WITH TASK LIGHT AND 16" HIGH TACKABLE TILE BELOW.
- FILE/FILE PEDESTAL.
- BOX/BOX/FILE PEDESTAL.
- PENCIL DRAWER.
- KEYBOARD TRAY.
- COPIER.
- PRINTER.
- FAX.
- FURNISHINGS. (V V)
- AUDIO BOOTH. (V C) SEE DETAILS 1/A5 THROUGH 6/A5. NOTE THE DASHED LINES INDICATE CONC. BEAMS ABOVE. REFER TO REFLECTED CEILING PLAN AND STRUCTURAL DWGS.
- EXAM CHAIR. (V V)
- PROJECTOR. (V V)
- 18" DEEP PLASTIC LAMINATE SHELVING ON ADJ. STANDARDS & BRACKETS.
- STAINLESS STEEL WIRE SHELVING ON ADJ. STANDARDS & BRACKETS.



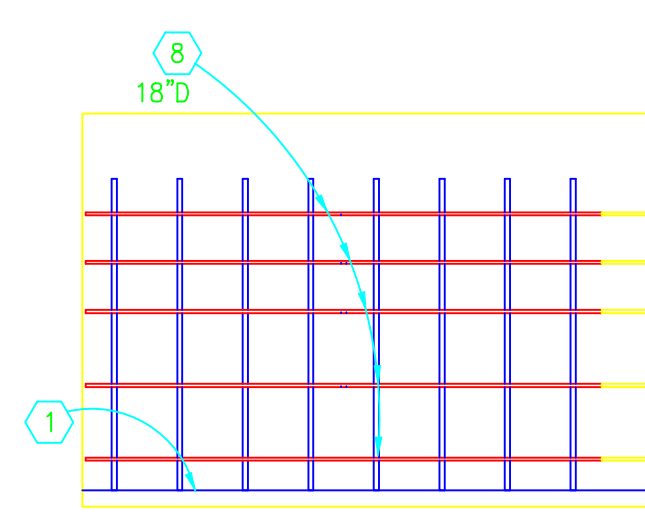
CLEAN STORAGE - 6B
1/4"=1'-0"



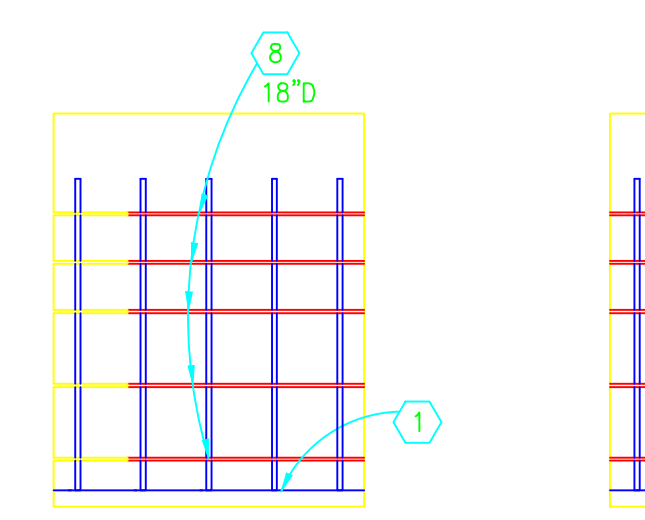
CLEAN STORAGE - 6B
1/4"=1'-0"



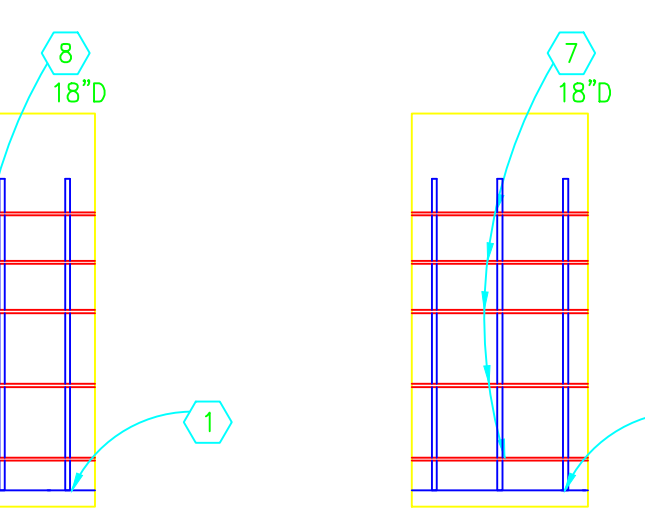
SINK WALL - TYP.
1/4"=1'-0" (6C, 6D REV., 6E REV., 6F, 7A, 7B, 7C REV., 7D REV., 7E REV.)



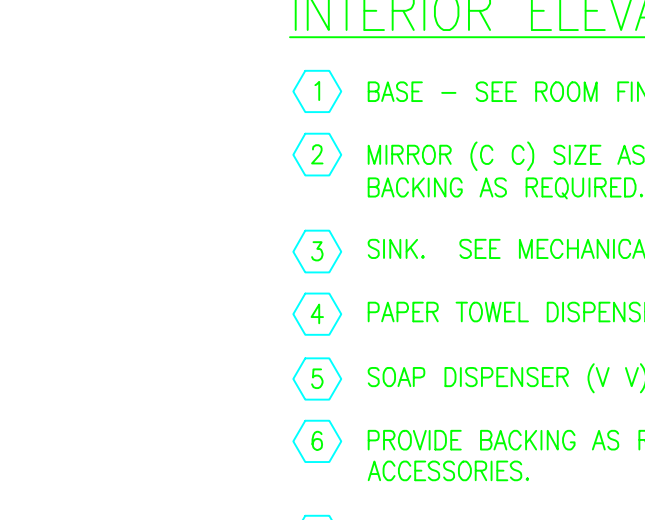
SPD STORAGE - 7
1/4"=1'-0"



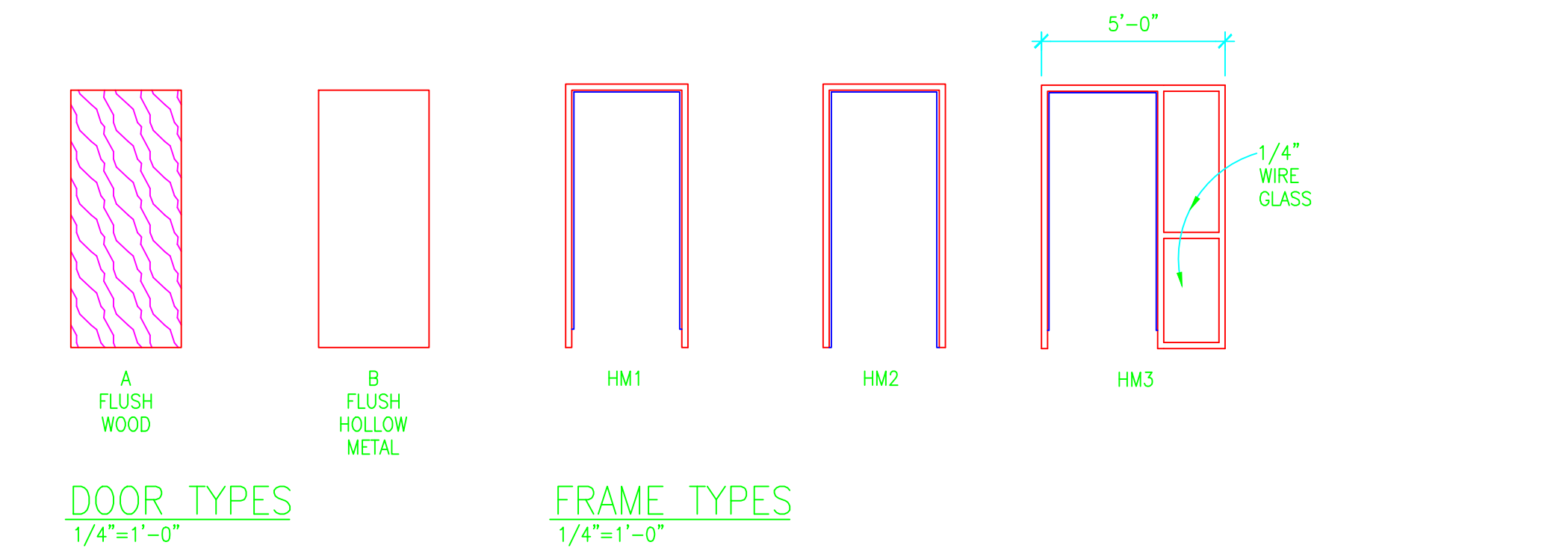
SPD STORAGE - 7
1/4"=1'-0"



SPD STORAGE - 7
1/4"=1'-0"



SOILED STOR. - COWA
1/4"=1'-0"



INTERIOR ELEVATION LEGEND

- BASE - SEE ROOM FINISH SCHEDULE.
- MIRROR (C C) SIZE AS INDICATED ON ELEV. PROVIDE BACKING AS REQUIRED.
- SINK. SEE MECHANICAL DRAWINGS.
- PAPER TOWEL DISPENSER (V V).
- SOAP DISPENSER (V V).
- PROVIDE BACKING AS REQUIRED FOR OWNER - FURNISHED ACCESSORIES.
- 3/4" PART. BD. SHELVING W/PLASTIC LAM. FACES & LAMINATE EDGES SUPPORTED ON ADJ. STANDARDS & BRACKETS. SHELVING DEPTH AS INDICATED ON ELEVATION. PROVIDE BACKING AS REQUIRED.
- STAINLESS STEEL WIRE SHELF ON ADJ. STANDARDS & BRACKETS. PROVIDE BACKING AS REQUIRED.