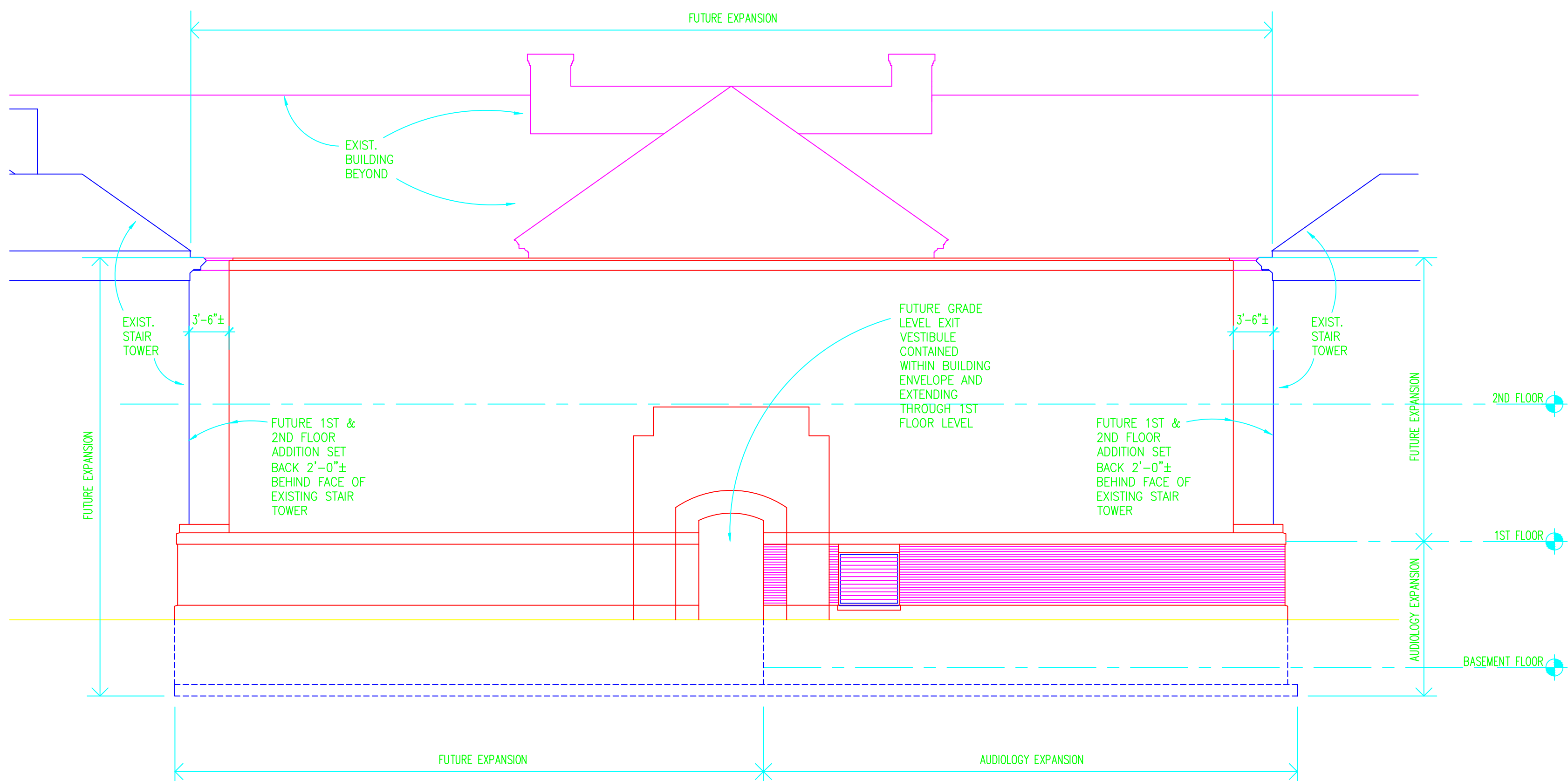


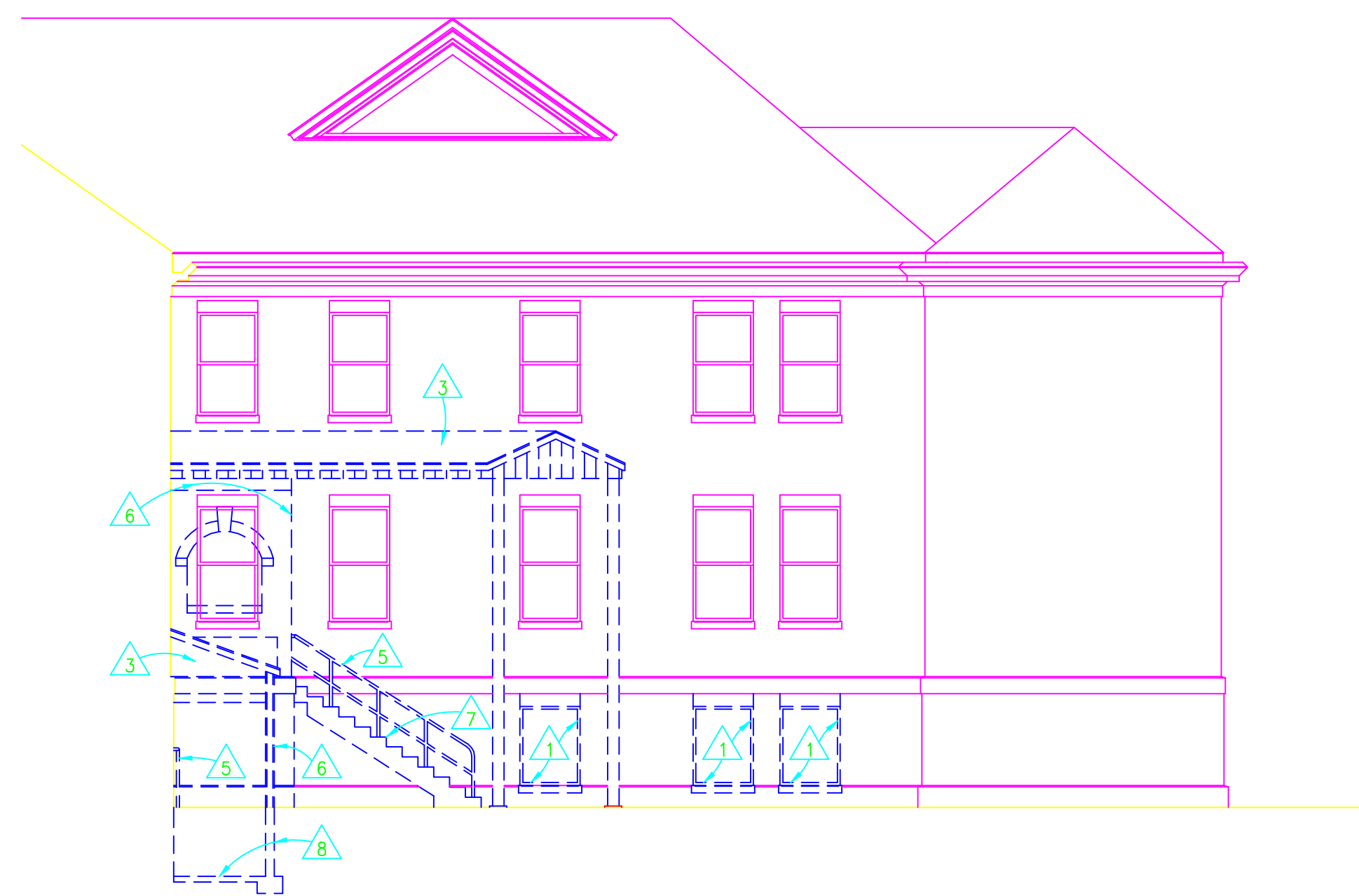
NORTH ELEVATION DEMOLITION
1/8"=1'-0"



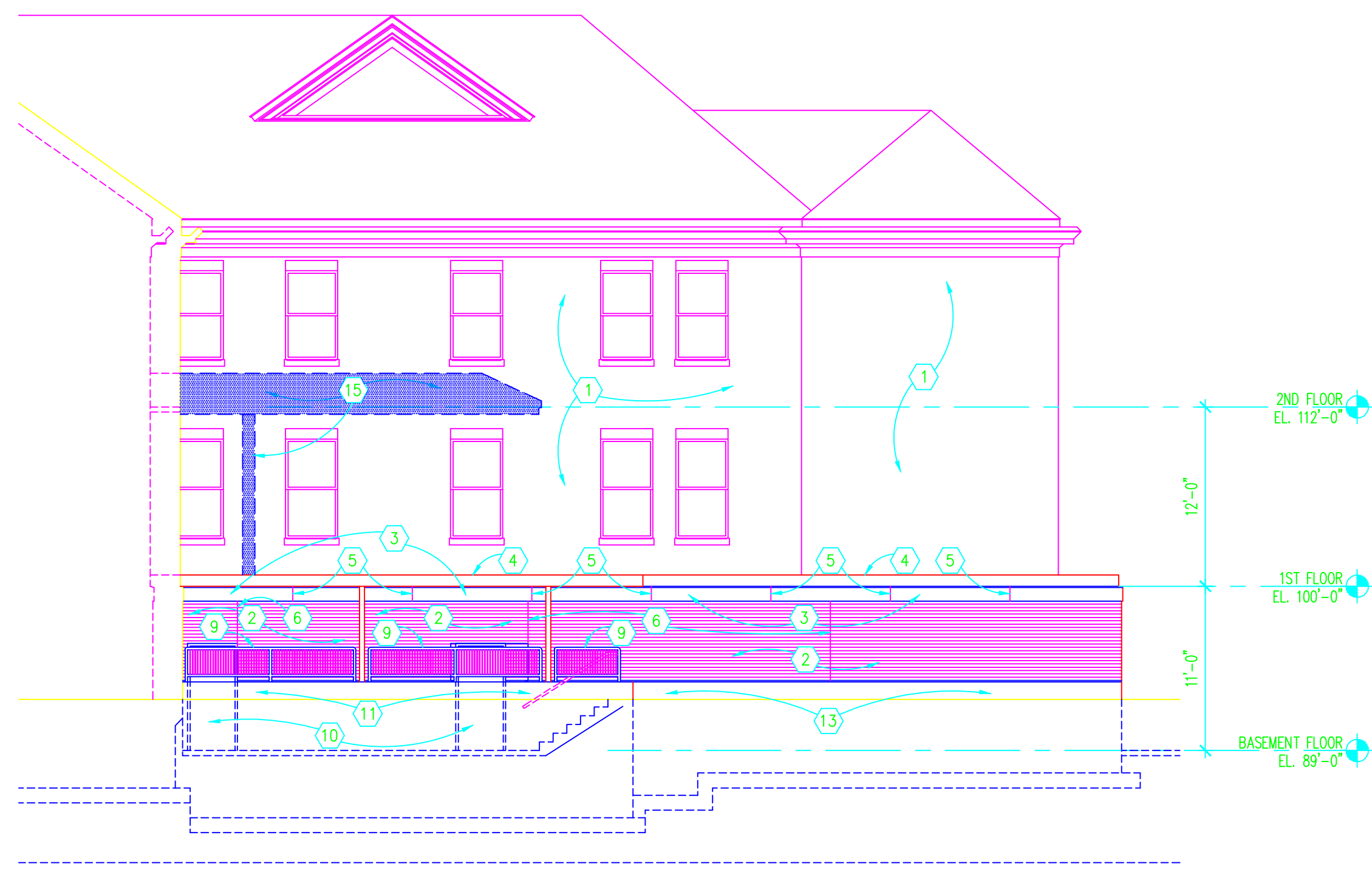
NORTH ELEVATION
1/8"=1'-0"



FUTURE EXPANSION SCHEMATIC NORTH ELEVATION
1/8"=1'-0"



EAST ELEVATION DEMOLITION
1/8"=1'-0"



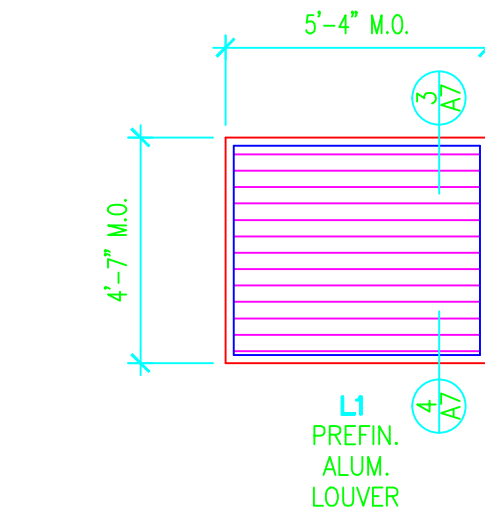
EAST ELEVATION
1/8"=1'-0"

DEMOLITION NOTES LEGEND

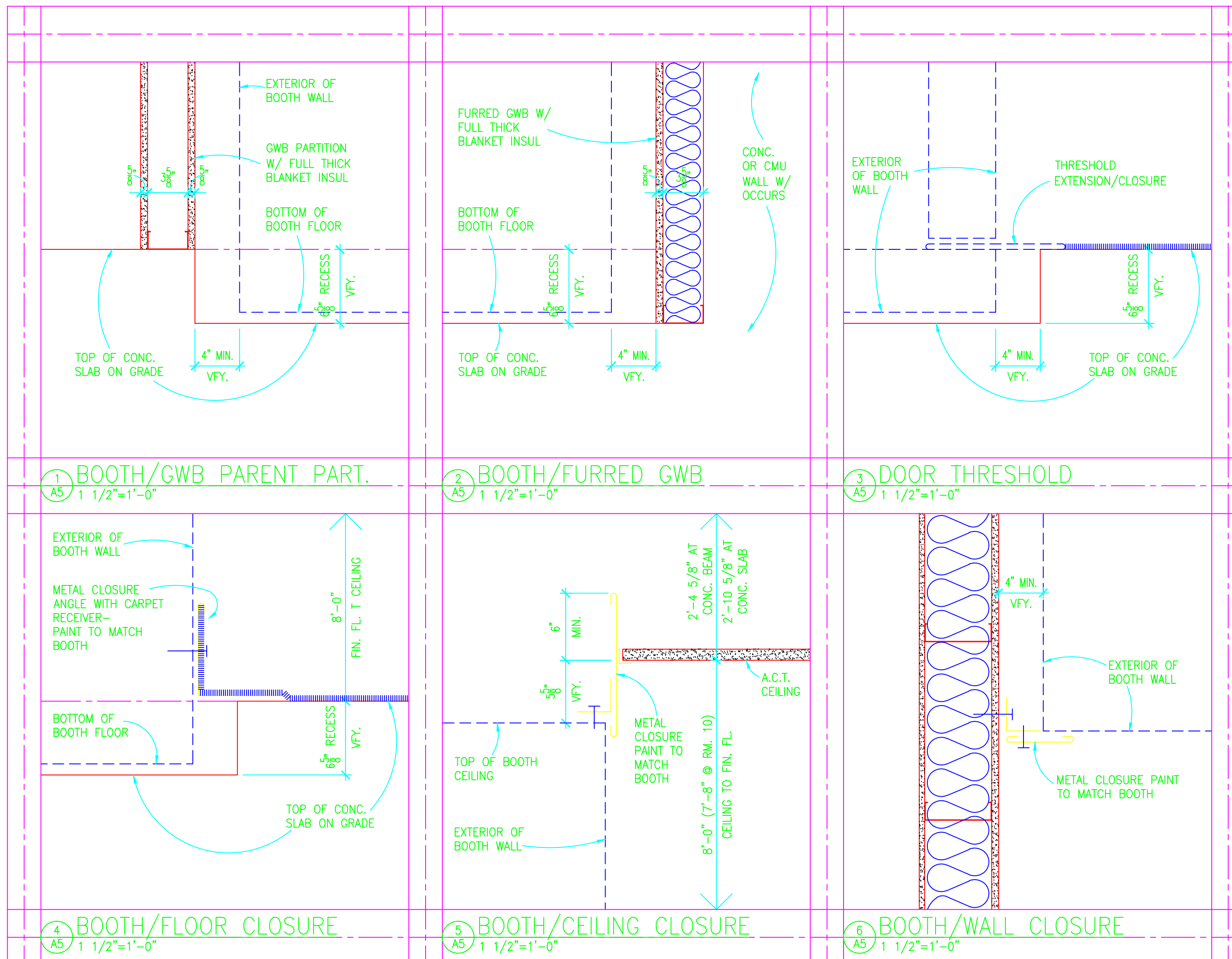
- 1 REMOVE EXISTING WINDOW, FRAME, AND SASH.
- 2 REMOVE ABANDONED STEAM TUNNEL REMNANTS AS REQUIRED FOR NEW CONSTRUCTION.
- 3 REMOVE EXISTING CANOPY. PATCH TO MATCH EXISTING AS REQ'D.
- 4 REMOVE EXISTING CAST STONE.
- 5 REMOVE EXISTING HANDRAIL.
- 6 REMOVE METAL SCREEN WALL AND SUPPORT COLUMNS.
- 7 REMOVE EXISTING STAIR.
- 8 REMOVE CONC. STAIR & AREAWAY.
- 9 REMOVE DOOR, FRAME & HARDWARE.

ELEVATION AND SECTION NOTES:

- 1 EXISTING BUILDING TO REMAIN.
- 2 4" FACE BRICK.
- 3 CAST STONE.
- 4 PREFIN. METAL FLASHING/FASCIA.
- 5 STONE JOINT.
- 6 CONTROL JOINT.
- 7 PREFIN. METAL OVERFLOW SCUPPER.
- 8 SOLDIER COURSE.
- 9 STEEL GURAD RAIL. S.D. 7/A7.
- 10 HOLLOW METAL DOOR AND FRAME.
- 11 CONCRETE RETAINING WALL. SEE STRUCTURAL.
- 12 INFILL OPENING WITH MASONRY TO MATCH EXISTING.
- 13 CONCRETE FOOTING AND FOUNDATION. SEE STRUCTURAL.
- 14 PREFIN. ALUMINUM LOUVER.
- 15 PATCH TO MATCH EXISTING DAMAGED BY DEMOLITION.



LOUVER ELEVATION
1/4"=1'-0"



I hereby certify that this plan specification, or report was prepared by me or under my direct supervision, and that I am duly Registered Architect under the laws of the State of Minnesota.

Date 1-24-2011 Reg. No. 21365



APPROVED SERVICE LINE DIRECTOR	DATE	APPROVED INFECTION CONTROL NURSE	DATE	BUILDING TITLE	PROJECT TITLE	DATE
APPROVED SERVICE LINE DIRECTOR	DATE	APPROVED PATIENT SAFETY	DATE	BUILDING ELEVATIONS	BUILDING 29	JANUARY 24, 2011
APPROVED PROJECTS SECTION MANAGER	DATE	APPROVED CHIEF OF POLICE	DATE	APPROVED CHIEF OF STAFF	CHECKED BY	PLOT SCALE
APPROVED DIRECTOR FNO	DATE	APPROVED SAFETY MANAGER	DATE	APPROVED MEDICAL CENTER DIRECTOR	RM	1/8"=1'-0"
					KS	PROJECT NO.
						656-CSI-002
						CAD FILE
						ELEVATIONS.DWG
						DRAWING NO.
						AS DWG 8 OF 38

