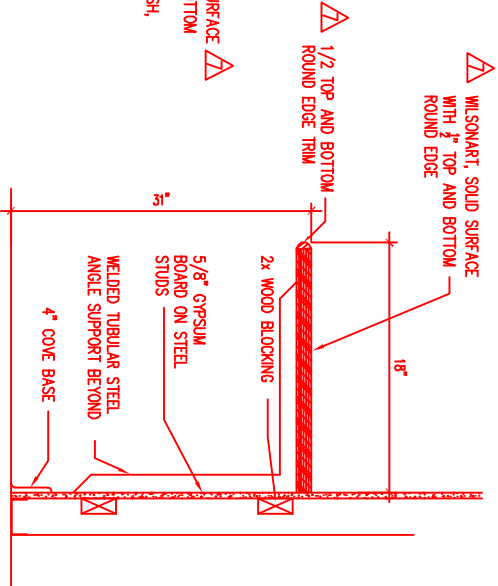
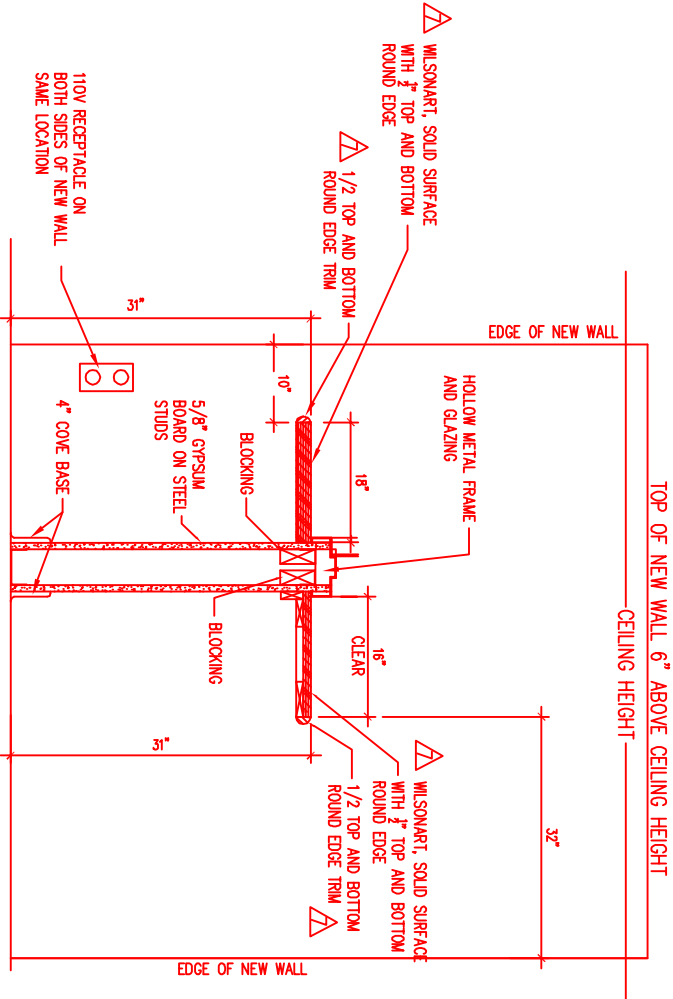


5 ADMIN CHECK-IN
N.T.S

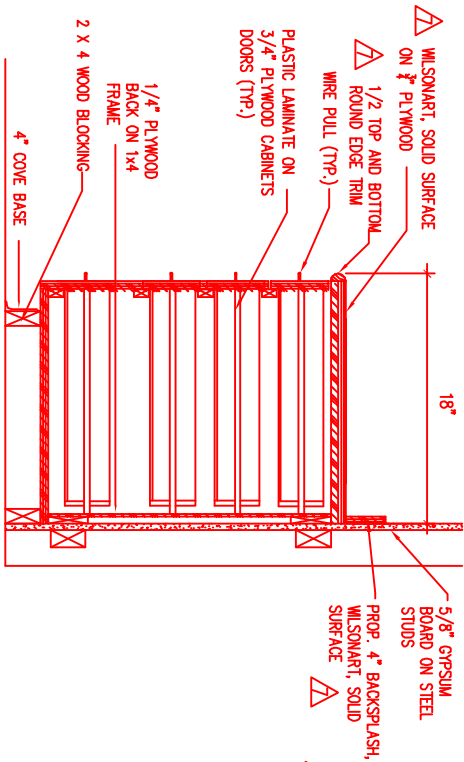


11 KNEE BRACE DETAIL
N.T.S

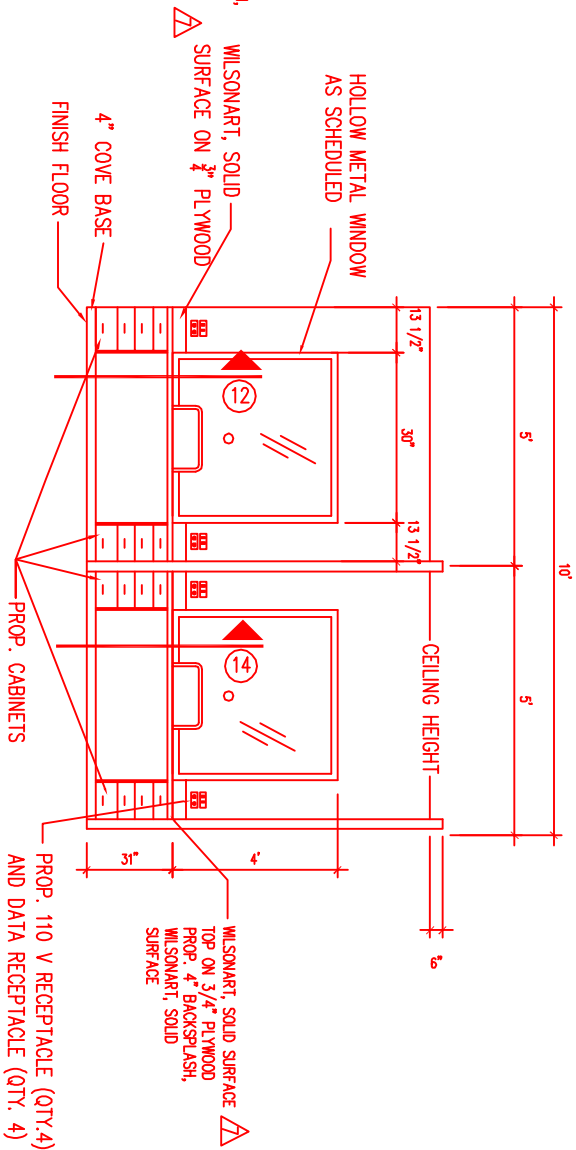


14 RECEPTION COUNTER
N.T.S

DATE	CHANGE	DESCRIPTION
2.12.12	Δ	REMOVED VCT LEGEND
2.12.12	Δ	REMOVED BASE LEGEND
2.12.12	Δ	REMOVED CORNER GUARD LEGEND
2.12.12	Δ	REMOVED CORRIDOR FINISH LEGEND
2.12.12	Δ	REMOVED PAINT FINISH LEGEND
2.12.12	Δ	REMOVED ROOM FINISH LEGEND
2.12.12	Δ	CHANGED NOTE

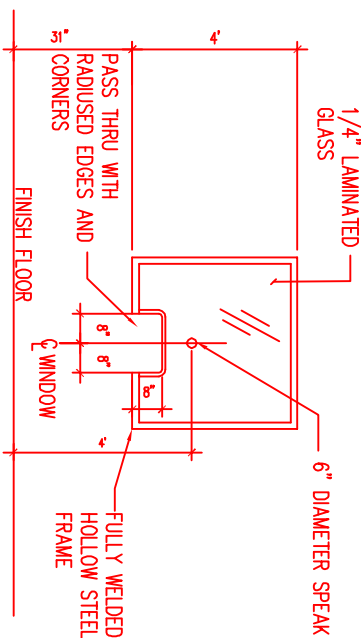


12 BASE CABINET
N.T.S



6 CLERK OFFICE
N.T.S

2 WINDOW BOTH SIDES
N.T.S



NEW WORK NOTES (SEE DETAILS FOR MOR INFO)

- 1) CONTRACTOR TO PROVIDE AND INSTALL CABINETS AS SHOWN ON DETAIL SHEETS. SHOP DRAWINGS TO BE SUBMITTED TO THE VA FOR APPROVAL..
- 2) CONTRACTOR TO PROVIDE AND INSTALL 1/4\" LAMINATED GLASS WITH FULLY WELDED HOLLOW STEEL FRAMES. FRAMES TO BE PAINTED AFTER INSTALL. CUT 6\" DIAMETER SPEAK HOLE AND PASS THRU WITH RADIUS EDGES.
- 3) CONTRACTOR TO PROVIDE AND INSTALL COUNTERTOP WITH 4\" BACKSPLASH, WILSONART SOLID SURFACE, ON 3/4\" PLYWOOD. KNEE BRACE SUPPORT ON ADMIN CHECK-IN SIDE FOR SUPPORT.
- 3) CONTRACTOR TO PROVIDE AND INSTALL 110V RECEPTACLE, QTY.4 AND ALL WIRING, ALSO DATA RECEPTACLE WITH PULL STRING QTY.4.
- 4) ALL NEW WALLS PREP, PAINT 2-COATS SHERWIN WILLIAMS HARMONY PAINT, WALLS TEXTURED WITH KNOCK DOWN FINISH.