

A

B

C

D

E

F

1

2

3

4

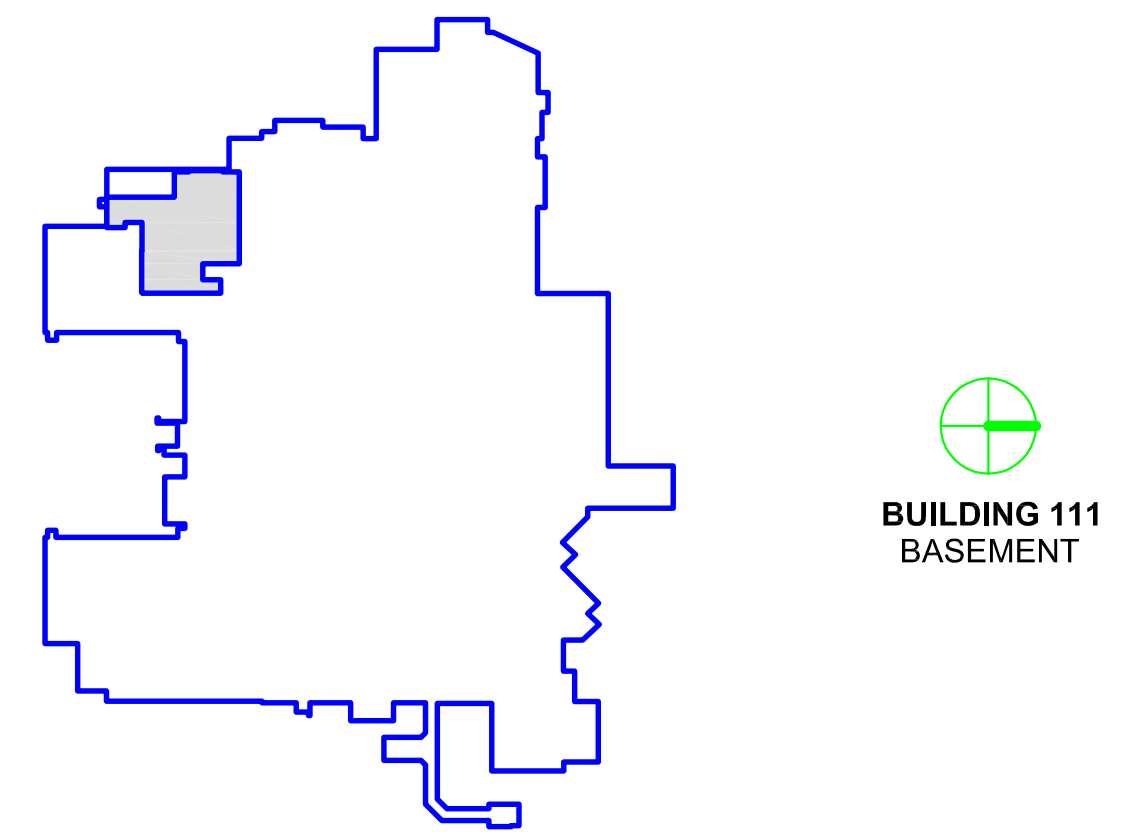
## GENERAL NOTES

- REFER TO DETAIL PLANS FOR ADDITIONAL PARTITION INFORMATION, SEE SHEET A-000.
- INTERIOR DIMENSIONS ARE TO FINISH FACE TO FACE U.N.O.
- INSTALL  $\frac{5}{8}$ " TYPE X GYPSUM WALL BOARD AND ACOUSTICAL INSULATION IN ALL ROOMS, FINISH TO GRADE #5.
- ALL SWITCHES, THERMOSTATS, AND OTHER ENVIRONMENTAL CONTROLS SHALL BE MOUNTED AT 40" AFF. TELEPHONE AND POWER OUTLETS SHALL BE AT 18" AFF. THESE CONTROLS SHALL BE LINED UP AT THE SAME HEIGHT AND WHERE MORE THAN ONE ARE ADJACENT, THEY SHALL BE EVENLY SPACED. GROUP MULTIPLE DEVICES IN A SINGLE COVER PLATE WHERE POSSIBLE.
- VERIFY ALL UTILITIES AND CONNECTION LOCATIONS.
- ALL PENETRATIONS IN RATED WALLS, SHALL BE RATED, TESTED ASSEMBLIES AS REQUIRED BY CODE.
- SEAL ALL PENETRATIONS IN SMOKE BARRIERS IN ACCORDANCE WITH CODES AND REQUIREMENTS.
- CONTRACTOR SHALL VERIFY ALL EXISTING CONDITIONS AND DIMENSIONS PRIOR TO BEGINNING CONSTRUCTION.
- CORNER GUARDS ARE REQUIRED AT ALL OUTSIDE CORNERS, SOME LOCATIONS MAY NOT BE INDICATED ON DRAWINGS. SEE SHEET ID-101.
- REPLACE DOORS, LOCKS, KICK PLATES, CLOSER, BUMPER GUARDS, DOOR STOPS, AND HARDWARE, SEE SHEET A-000. RESTORE DOOR FRAME TO SMOOTH FINISH AND REPAINT.
- ALL WALL HUNG CASEWORK, SHELVING AND EQUIPMENT ATTACHED TO WALLS SHALL BE ANCHORED BETWEEN STUDS.
- REFER TO INTERIOR FLOOR FINISH PLAN, SHEET ID-101.
- REFER TO INTERIOR WALL FINISH PLAN, SHEET ID-101.
- REFER TO INTERIOR SIGNAGE PLAN, SHEET A-000.
- VERIFY FIELD DIMENSIONS, COORDINATE ACTUAL DIMENSIONS WITH CONTRACTOR AND VA.
- SUBMIT CONCRETE AND STEEL SHOP DRAWINGS INDICATING ACTUAL FILED DIMENSIONS, CONTRACTOR RESPONSIBLE TO DIMENSION OF STRUCTURE TO FIT EXISTING CONDITIONS.
- WALL TYPES SEE A-000
- DIMENSIONS ON FLOOR PLAN ARE BASED ON FACE OF FINISHED WALL TO FACE OF FINISHED WALL (NOMINAL), U.N.O.
- VERIFY ALL DIMENSIONS AND CONDITIONS AT JOB SITE. PORTIONS OF EXISTING CONSTRUCTION MAY HAVE BEEN REMOVED BY OWNER.
- MAINTAIN CONTINUOUS UTILITY SERVICE TO ALL SPACES IN THE BUILDING NOT AFFECTED BY THIS WORK. COORDINATE WITH OWNER ANY DISRUPTION IN SERVICES REQUIRED TO PERFORM WORK OR TO MODIFY EXISTING PIPING, DUCTWORK OR ANY ASSOCIATED EQUIPMENT.
- REFER TO SHEET ID-101 AND ID-102 FOR FINISH SCHEDULE AND FINISH MATERIALS.
- REFER TO SHEET A-000 FOR DOOR SCHEDULE, DOOR TYPES, HARDWARE AND NOTES.

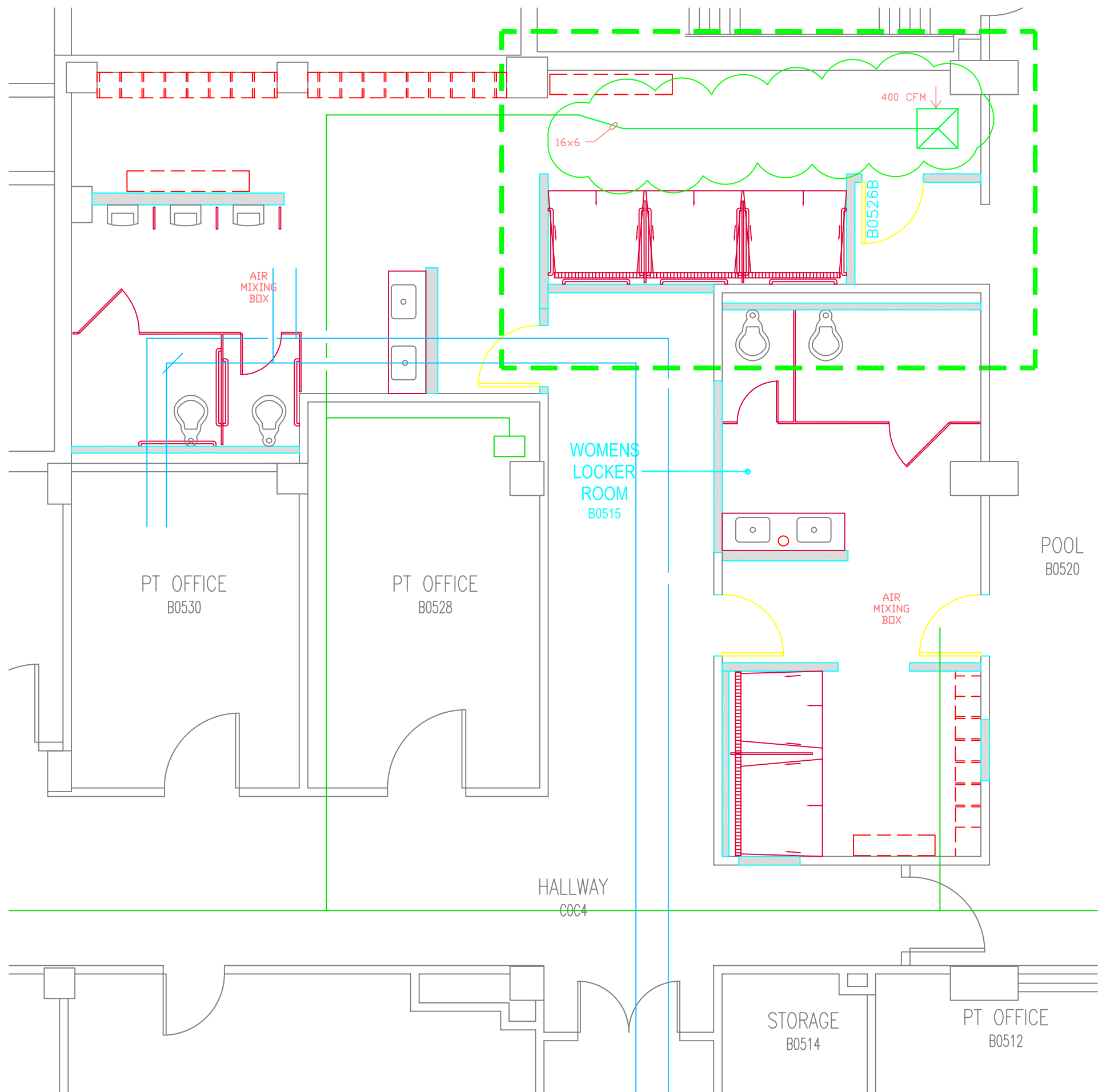
## GRAPHIC LEGEND

	EXISTING WALL TO REMAIN		PLAN KEY NOTE
	EXISTING DOOR TO REMAIN		PARTITION TYPE
	INFECTION CONTROL/CONSTRUCTION BARRIER WALL (IFC/CB)		INTERIOR ELEVATION
	NEW WALL/PARTITION		NEW DOOR
	NEW WALL OR CEILING MOUNTED NURSE CALL BUTTON		NEW WALL MOUNTED ADA AUTOMATIC DOOR OPENER PUSH PLATE - EXACT LOCATION DURING MEP
	NEW SWITCH		NEW IVORY RECEPTACLE, DUPLEX WITH GROUND FAULT CIRCUIT INTERRUPTER, HOSPITAL GRADE
	NEW WALL MOUNTED ADA AUTOMATIC DOOR OPENER PUSH PLATE - EXACT LOCATION DURING MEP		
	NEW WALL MOUNTED ADA AUTOMATIC DOOR OPENER PUSH PLATE - EXACT LOCATION DURING MEP		

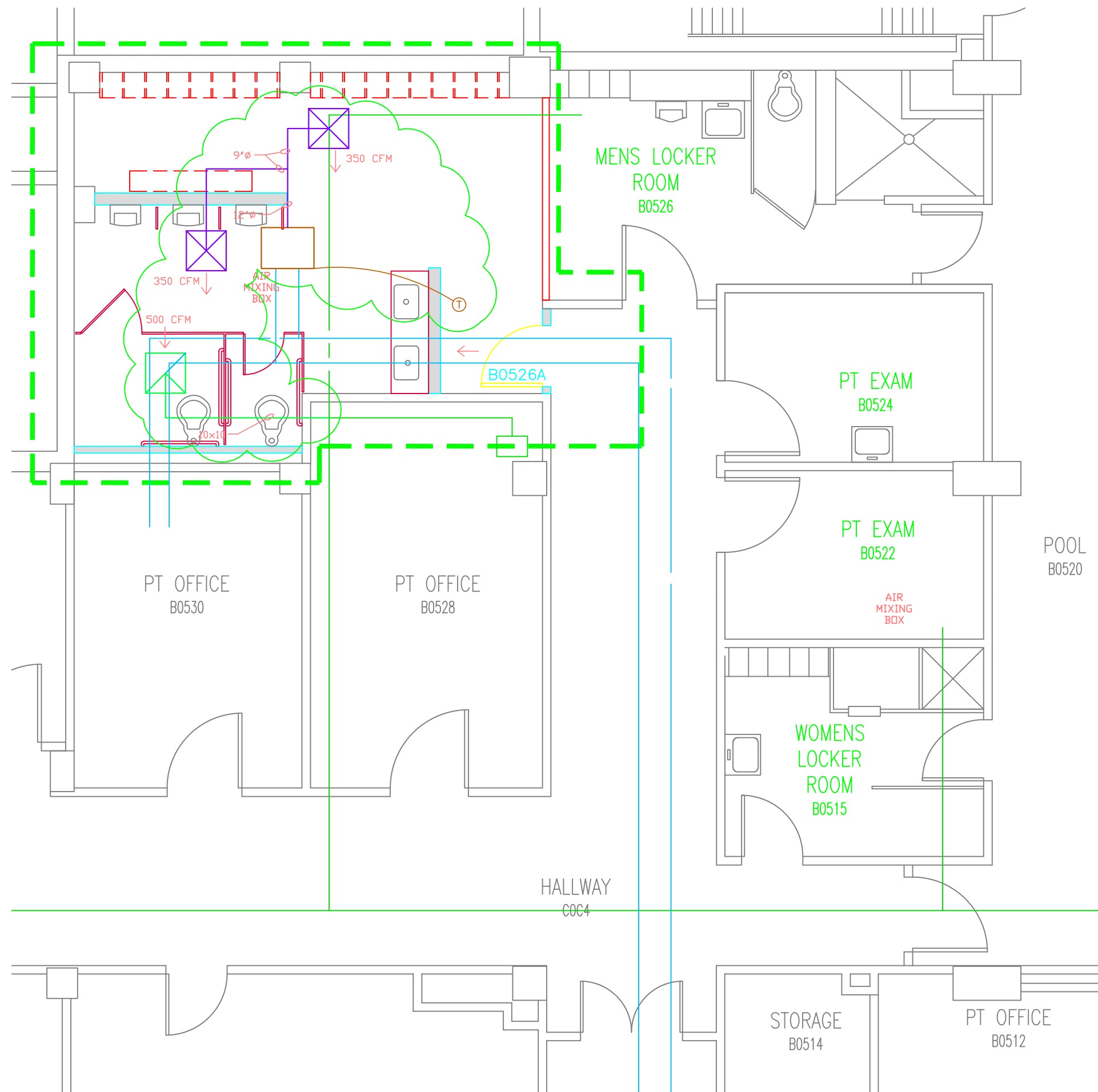
## KEY PLAN



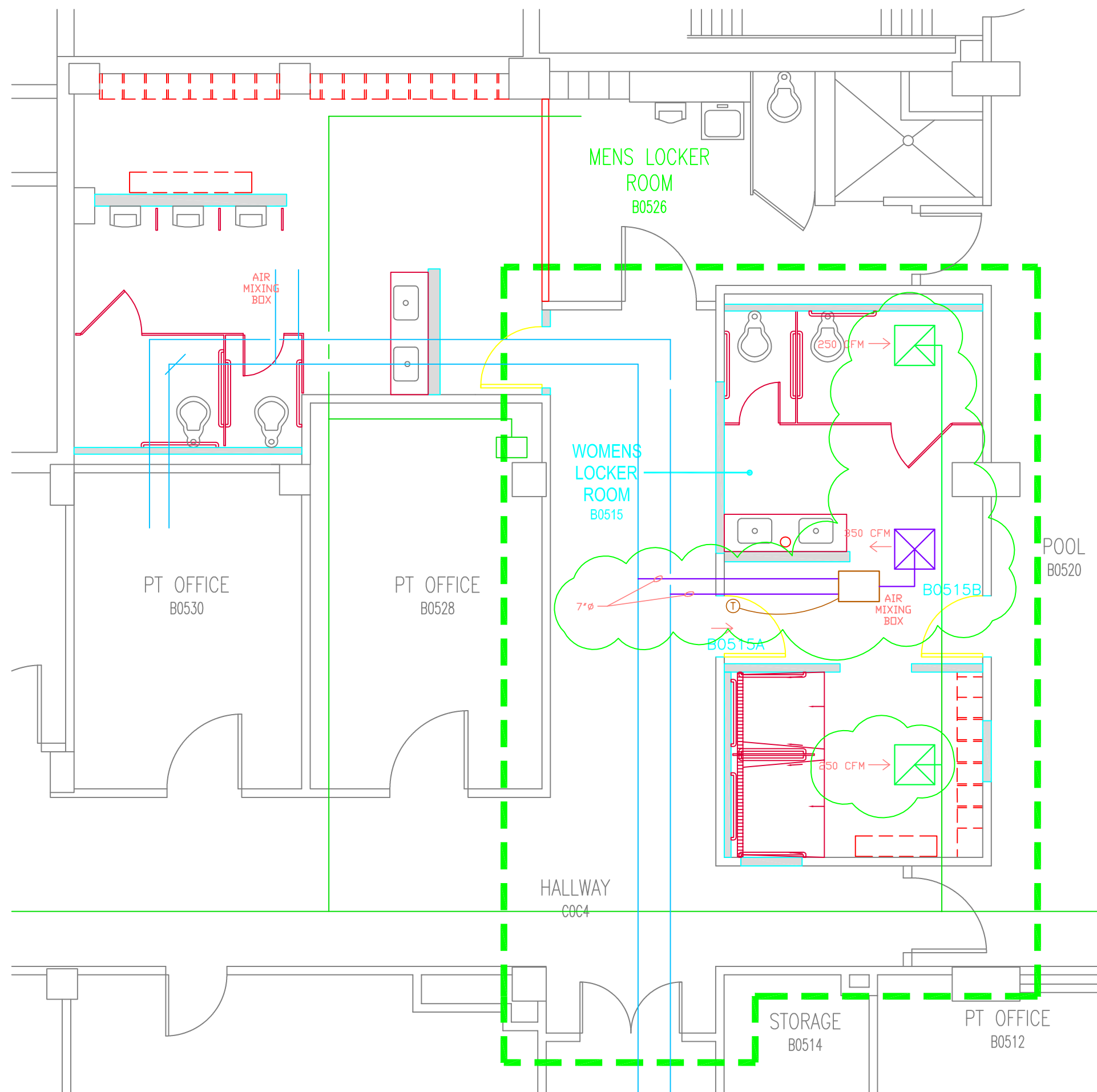
BUILDING 111  
BASEMENT



3 PLAN - PHASE 3  
3/16" = 1'-0"



1 PLAN - PHASE 1  
3/16" = 1'-0"



2 PLAN - PHASE 2  
3/16" = 1'-0"



ARCHITECT:

CLEMENT J. ZABLOCKI VA MEDICAL CENTER  
OFFICE OF CONSTRUCTION AND FACILITIES MANAGEMENT

Drawing Title  
PHASE 1 - 3:  
MECHANICAL NEW WORK

Approved: Project Director

Troy Martinson, PE

Project Title  
111 Upgrade Pool Locker  
Rooms

Location  
VA Medical Center, Milwaukee, WI

Date  
August 28, 2015

Checked

Drawn

KJM

Project Number  
695-14-114  
Building Number  
Building 111

Drawing Number

M-101

Office of  
Construction  
and Facilities  
Management

Department of  
Veterans Affairs