

REV	DESCRIPTION	BY	DATE	-	----	--	--/--/--	-	----	--	--/--/--
-	----	--	--/--/--	-	----	--	--/--/--	-	----	--	--/--/--

MEMPHIS VA MEDICAL CENTER

MEMPHIS, TENNESSEE

AUMS–VISN 9

AS BUILT

TABLE OF CONTENTS				
DRAWING NUMBER	PAGE	REV	DRAWING TYPE	STATUS
29489782–027–01	01		TITLE SHEET & TABLE OF CONTENTS	AS BUILT
29489782–027–01	02		TYPICAL CUTSHEET TABLE REFERENCE	AS BUILT
29489782–027–CM	03		MEMPHIS VA MEDICAL CENTER NETWORK DIAGRAM (BUILDING 1)	AS BUILT
29489782–027–CM	04		MEMPHIS VA MEDICAL CENTER NETWORK DIAGRAM (BUILDING 5, 1, 1A)	AS BUILT
29489782–027–CM	05		MEMPHIS VA MEDICAL CENTER NETWORK DIAGRAM (BUILDING 1, 7)	AS BUILT
29489782–027–CM	06		MEMPHIS VA MEDICAL CENTER NETWORK DIAGRAM (BUILDING 5)	AS BUILT
29489782–027–CM	07		MEMPHIS VA MEDICAL CENTER NETWORK DIAGRAM (BUILDING CAMPUS)	AS BUILT
29489782–027–CM	08		MEMPHIS VA MEDICAL CENTER NETWORK DETAILS	AS BUILT

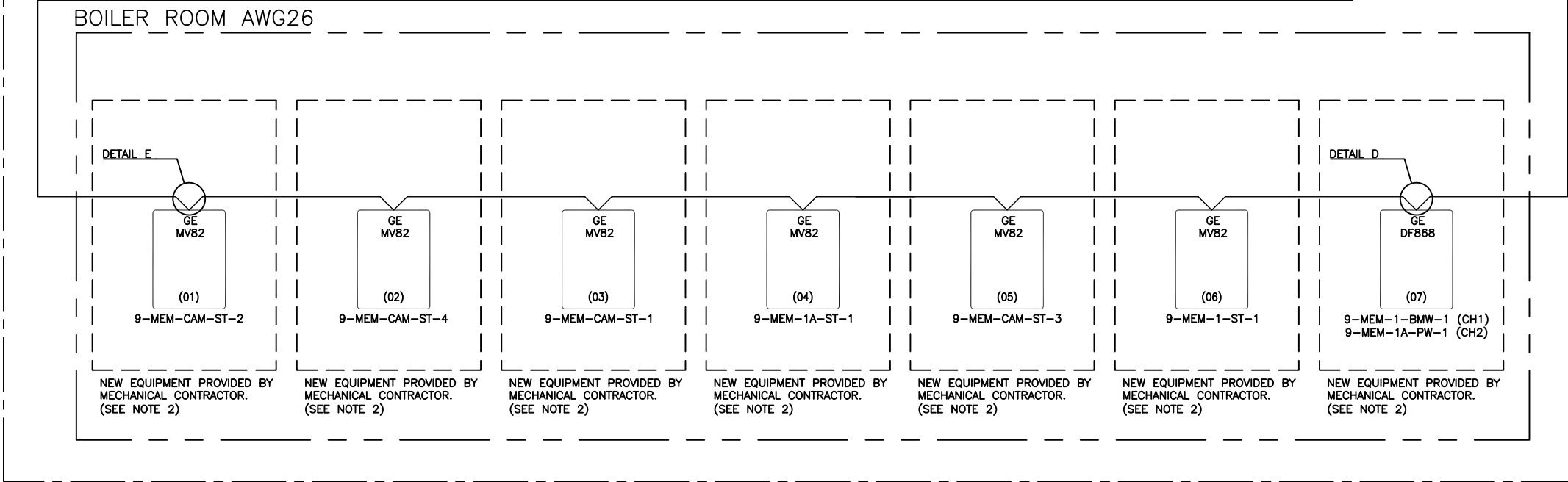
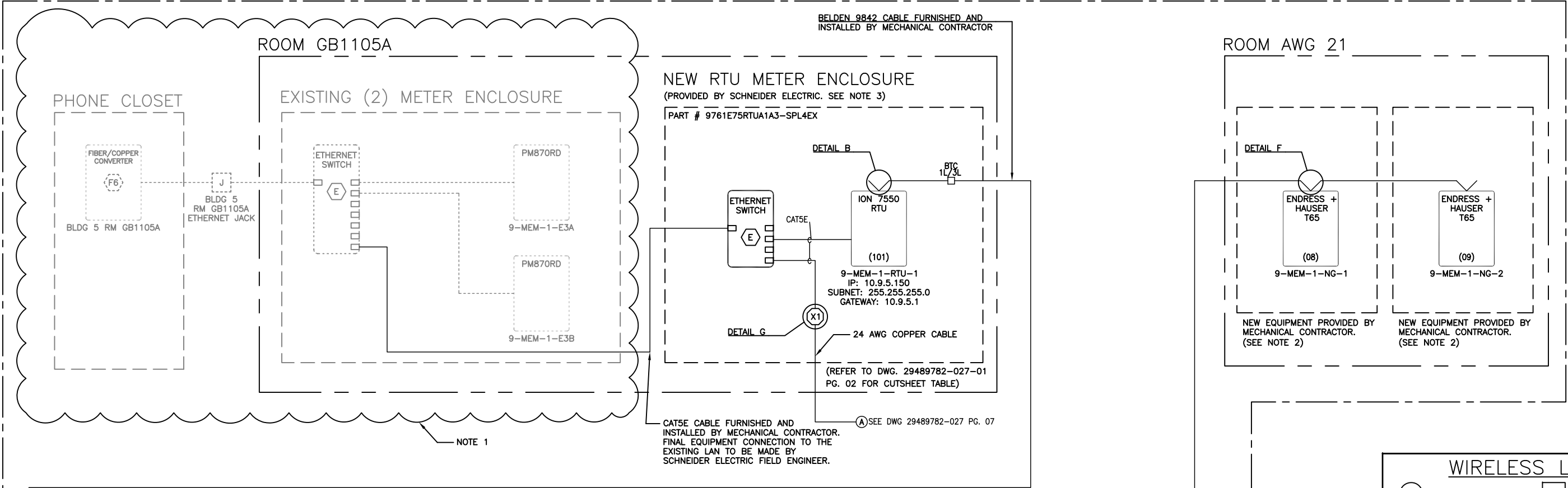
REV	DESCRIPTION	BY	DATE	—	----	--	--/--/--	—	----	--	--/--/--
—	----	--	--/--/--	—	----	--	--/--/--	—	----	--	--/--/--

Cutsheet Reference Table		
Document Number	Description	File Name Reference
01	Square D PowerLogic Factory Assembled Enclosures Installation Guide	Document 01 – 63230–020–59 A1.pdf
02	Phoenix Contact 24VDC Power Supply Data Sheet	Document 02 – 2866750 PC Power supply.pdf
03	Antenna Jumper Data Sheet	Document 03 – Antenna Jumper.pdf
04	Bussman FNQ–R Fuse Specification Sheet	Document 04 – FNQ–R Fuses.pdf
05	Bussman Compact Circuit Protector Disconnect Switch Data Sheet	Document 05 – CCP Fusible disconnect.pdf
06	Maxrad Access Point Radio Antenna Data Sheet	Document 06 – Antenna Maxrad MFB9157.pdf
07	Kathrein–Scala TY–900 Remote Radio Antenna Data Sheet	Document 07 – Antenna TY–900.pdf
08	PD–395 Lightning Arrestor Specification Sheet	Document 08 – Lightning Arrestor Parameters.pdf
09	Heliax Coaxial Cable Data Sheet	Document 09 – LDF4RN–50A Heliax Coaxial Cable.pdf
10	MDS iNET–II 900 Ethernet Remote Radio Specification Sheet	Document 10 – MDS iNETII 900 Mhz Radio.pdf
11	MDS Wireless Redio Enclosure Specification Sheet	Document 11 – MDS Packaged Radio Enclosure Data Sheet.pdf
12	Kathrein–Scala Access Point Antenna (Low Gain) Data Sheet	Document 12 – Unity Omni Antenna.pdf
13	MTS Wireless Mounting Hardware Product Guide	Document 13 – Steel Wireless Mounting Hardware.pdf
14	ION 7550 RTU Meter Specification Sheet	Document 14 – 7550RTU_Ver1.1.pdf
15	Belden Serial Communication Cable Specification Sheet	Document 15 – Belden Cables.pdf
16	Ethernet Extender Specification Sheet	Document 16 – EIR–Extend_0408ds.pdf
17	Ntron Ethernet Switch Data Sheet	Document 17 – 105fx_datasheet.pdf
18	Ethernet Female to Female Network Cable Adaptor Specifications Sheet	Document 18 – Ethernet Cable Network Adaptor Specifications.pdf
19	DSL Modem Data Sheet	Document 19 – Netopia 4600 Series Router.pdf
20	Cisco Ethernet Hardware Router Data Sheet	Document 20 – Cisco Router.pdf

© SCHNEIDER ELECTRIC USA, INC. THIS DRAWING AND/OR SPECIFICATIONS CONTAINS INFORMATION PROPRIETARY TO SCHNEIDER ELECTRIC, IT IS SUBMITTED IN CONFIDENCE AND IS TO BE USED SOLELY FOR THE PURPOSE FOR WHICH IT IS FURNISHED. SCHNEIDER ELECTRIC OWNS ALL COPYRIGHT, DESIGN AND INVENTION RIGHTS FOR THE DATA AND/OR MATERIAL DISCLOSED HEREIN. ALL DRAWINGS AND WRITTEN MATERIAL APPEARING HEREIN MAY NOT BE REPRODUCED, TRANSMITTED, DISCLOSED OR USED OTHERWISE IN WHOLE OR IN PART WITHOUT WRITTEN AUTHORIZATION OF SCHNEIDER ELECTRIC.	SCHNEIDER ELECTRIC USA, INC.		JOB NAME:	MEMPHIS VA MEDICAL CENTER	EQUIPMENT DESIGNATION:			—		
			JOB LOCATION:	MEMPHIS, TENNESSEE	EQUIPMENT TYPE:			VISN 9		
			DRAWN BY:	SEAN BUCHANAN	DRAWING TYPE:			CUTSHEET REFERENCE TABLE		
	CHECKED BY:		JAY KIRLOSKAR	ENGR:	IBRAHIM BULLE	<div>Schneider Electric</div>				
	CHECKED DATE:		FEBRUARY 1, 2012	DATE:	FEBRUARY 1, 2012					
	PLANT LOCATION:		P48 (ENG SVCS — PROJECTS)	DRAWING STATUS:		AS BUILT	DWG#	29489782-027-01	PG 02	OF 08

REV	DESCRIPTION	BY	DATE	-	----	--	--/--/--	-	----	--	--/--/--
-	----	--	--/--/--	-	----	--	--/--/--	-	----	--	--/--/--

BUILDING 1



NETWORK DIAGRAM
MEMPHIS VA MEDICAL CENTER

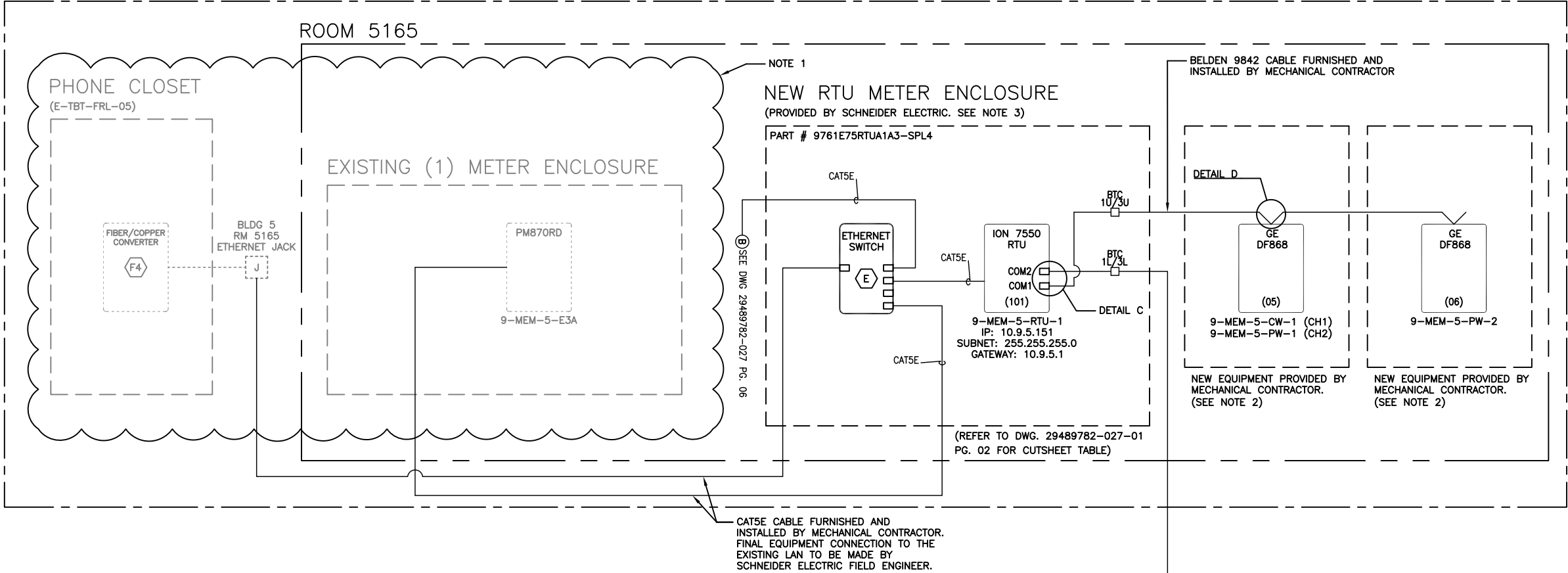
NOTES:

- EQUIPMENT INSTALLED UNDER VA-AEM PROJECT CONTRACT # GS-07F-9462G.
- BELDEN 9842 COMMUNICATIONS CABLE TO TERMINATE ON MODBUS COMMUNICATION MODULE AS SHOWN. CONNECTION FROM MODBUS MODULE TO MECHANICAL METER IS THE RESPONSIBILITY OF THE MECHANICAL CONTRACTOR, INSTALLED PER PRODUCT SPECIFICATIONS.
- RTU ENCLOSURE AND ALL CONNECTED WIRING, INCLUDING POWER AND COMMUNICATIONS, SHALL NEITHER BE INSTALLED WITHIN, NOR PASS THROUGH AN AREA CLASSIFIED AS HAZARDOUS, AS DEFINED BY THE NEC.
- ELECTRICAL EQUIPMENT SHALL BE INSTALLED, OPERATED, SERVICED, AND MAINTAINED ONLY BY QUALIFIED PERSONNEL.
- ALL DETAILS LISTED HEREIN ARE FOR GENERAL REFERENCE ONLY AND SHALL BE USED ACCORDINGLY. EQUIPMENT SHALL BE INSTALLED IN ACCORDANCE WITH ALL LOCAL AND NEC CODES. REFER TO PROVIDED SQUARE D POWERLOGIC FACTORY ASSEMBLED ENCLOSURES INSTRUCTION BULLETIN 63230-020-59 A1 FOR ADDITIONAL DETAILS, PERTAINING TO THE 7550 RTU ENCLOSURE INSTALLATION.
- ALL ENCLOSURES PROVIDED BY SCHNEIDER ELECTRIC, WHICH INCLUDE REMOTE RADIOS, WILL BE EQUIPPED WITH FACTORY INSTALLED LIGHTNING ARRESTORS.
- ALL WIRELESS NETWORK ENCLOSURES AND ITS ASSOCIATED CONTENTS, COAX CABLES/HARDWARE, ETHERNET JACKS, ANTENNAS, AND ALL OTHER MISCELLANEOUS HARDWARE REQUIRED TO COMPLETE THE INSTALLATION OF THE WIRELESS SYSTEM IS THE RESPONSIBILITY OF THE MECHANICAL CONTRACTOR.
- ALL OUTDOOR COAX TERMINATIONS SHALL BE MADE WITH A SELF HEALING WEATHERPROOF TAPE SUCH AS 3M SCOTCH 2228 OR EQUAL.
- COAX CABLE MUST BE GROUNDED TO A PERMANENT SYSTEM GROUND.

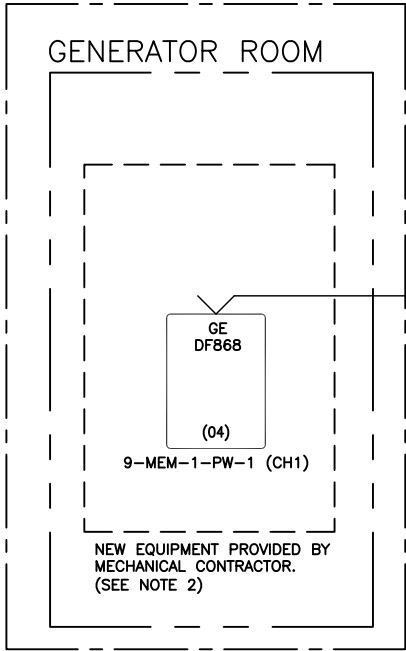
© SCHNEIDER ELECTRIC USA, INC. THIS DRAWING AND/OR SPECIFICATIONS CONTAINS INFORMATION PROPRIETARY TO SCHNEIDER ELECTRIC, IT IS SUBMITTED IN CONFIDENCE AND IS TO BE USED SOLELY FOR THE PURPOSE FOR WHICH IT IS FURNISHED. SCHNEIDER ELECTRIC OWNS ALL COPYRIGHT, DESIGN AND INVENTION RIGHTS FOR THE DATA AND/OR MATERIAL DISCLOSED HEREIN. ALL DRAWINGS AND WRITTEN MATERIAL APPEARING HEREIN MAY NOT BE REPRODUCED, TRANSMITTED, DISCLOSED OR USED OTHERWISE IN WHOLE OR IN PART WITHOUT WRITTEN AUTHORIZATION OF SCHNEIDER ELECTRIC.	SCHNEIDER ELECTRIC USA, INC.		JOB NAME:	MEMPHIS VA MEDICAL CENTER	EQUIPMENT DESIGNATION: BUILDING 1	
			JOB LOCATION:	MEMPHIS, TENNESSEE	EQUIPMENT TYPE: VISN 9	
	CHECKED BY: JAY KIRLOSKAR		DRAWN BY:	SEAN BUCHANAN	DRAWING TYPE: MEMPHIS VA MEDICAL CENTER NETWORK DIAGRAM	
	CHECKED DATE: FEBRUARY 1, 2012		ENGR:	IBRAHIM BULLE		
	PLANT LOCATION: P48 (ENG SVCS - PROJECTS)		DATE:	FEBRUARY 1, 2012	DWG# 29489782-027-CM	
			DRAWING STATUS:	AS BUILT		
					PG 03	OF 08
					REV -	

REV	DESCRIPTION	BY	DATE	-	----	--	--/--/--	-	----	--	--/--/--
-	----	--	--/--/--	-	----	--	--/--/--	-	----	--	--/--/--

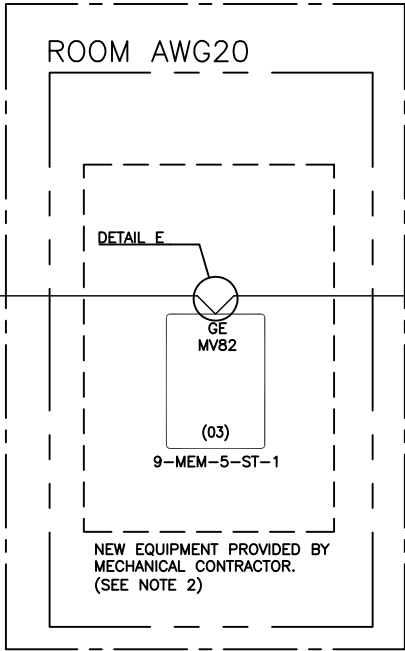
BUILDING 5



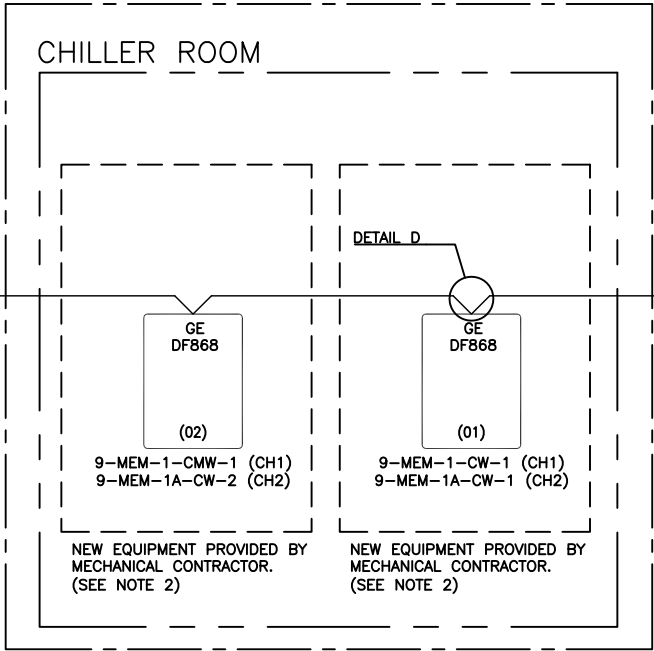
BUILDING 1



BUILDING 5



BUILDING 1A



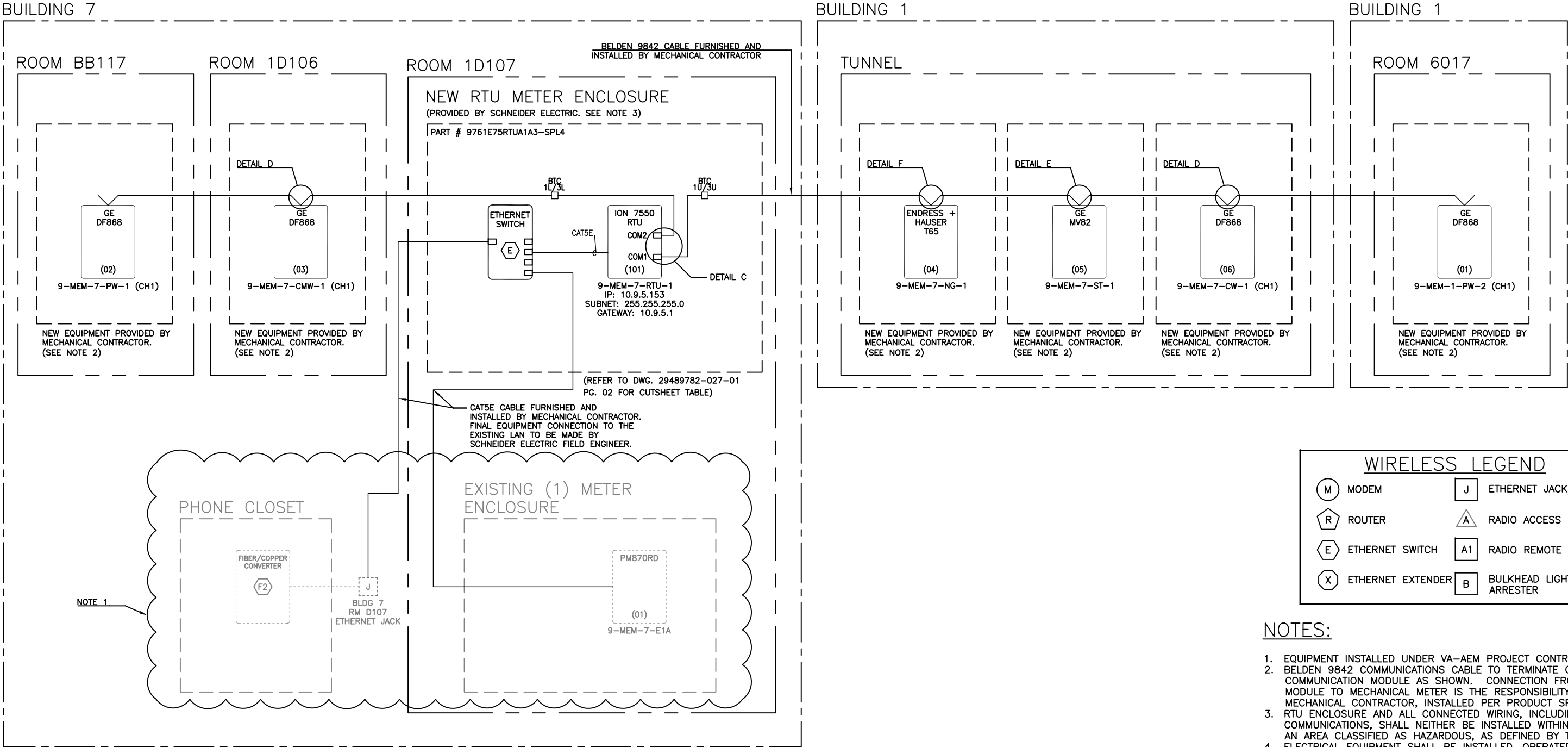
NETWORK DIAGRAM
MEMPHIS VA MEDICAL CENTER

NOTES:

- EQUIPMENT INSTALLED UNDER VA-AEM PROJECT CONTRACT # GS-07F-9462G.
- BELDEN 9842 COMMUNICATIONS CABLE TO TERMINATE ON MODBUS COMMUNICATION MODULE AS SHOWN. CONNECTION FROM MODBUS MODULE TO MECHANICAL METER IS THE RESPONSIBILITY OF THE MECHANICAL CONTRACTOR, INSTALLED PER PRODUCT SPECIFICATIONS.
- RTU ENCLOSURE AND ALL CONNECTED WIRING, INCLUDING POWER AND COMMUNICATIONS, SHALL NEITHER BE INSTALLED WITHIN, NOR PASS THROUGH AN AREA CLASSIFIED AS HAZARDOUS, AS DEFINED BY THE NEC.
- ELECTRICAL EQUIPMENT SHALL BE INSTALLED, OPERATED, SERVICED, AND MAINTAINED ONLY BY QUALIFIED PERSONNEL.
- ALL DETAILS LISTED HEREIN ARE FOR GENERAL REFERENCE ONLY AND SHALL BE USED ACCORDINGLY. EQUIPMENT SHALL BE INSTALLED IN ACCORDANCE WITH ALL LOCAL AND NEC CODES. REFER TO PROVIDED SQUARE D POWERLOGIC FACTORY ASSEMBLED ENCLOSURES INSTRUCTION BULLETIN 63230-020-59 A1 FOR ADDITIONAL DETAILS, PERTAINING TO THE 7550 RTU ENCLOSURE INSTALLATION.
- ALL ENCLOSURES PROVIDED BY SCHNEIDER ELECTRIC, WHICH INCLUDE REMOTE RADIOS, WILL BE EQUIPPED WITH FACTORY INSTALLED LIGHTNING ARRESTORS.
- ALL WIRELESS NETWORK ENCLOSURES AND ITS ASSOCIATED CONTENTS, COAX CABLES/HARDWARE, ETHERNET JACKS, ANTENNAS, AND ALL OTHER MISCELLANEOUS HARDWARE REQUIRED TO COMPLETE THE INSTALLATION OF THE WIRELESS SYSTEM IS THE RESPONSIBILITY OF THE MECHANICAL CONTRACTOR.
- ALL OUTDOOR COAX TERMINATIONS SHALL BE MADE WITH A SELF HEALING WEATHERPROOF TAPE SUCH AS 3M SCOTCH 2228 OR EQUAL.
- COAX CABLE MUST BE GROUNDED TO A PERMANENT SYSTEM GROUND.

© SCHNEIDER ELECTRIC USA, INC. THIS DRAWING AND/OR SPECIFICATIONS CONTAINS INFORMATION PROPRIETARY TO SCHNEIDER ELECTRIC, IT IS SUBMITTED IN CONFIDENCE AND IS TO BE USED SOLELY FOR THE PURPOSE FOR WHICH IT IS FURNISHED. SCHNEIDER ELECTRIC OWNS ALL COPYRIGHT, DESIGN AND INVENTION RIGHTS FOR THE DATA AND/OR MATERIAL DISCLOSED HEREIN. ALL DRAWINGS AND WRITTEN MATERIAL APPEARING HEREIN MAY NOT BE REPRODUCED, TRANSMITTED, DISCLOSED OR USED OTHERWISE IN WHOLE OR IN PART WITHOUT WRITTEN AUTHORIZATION OF SCHNEIDER ELECTRIC.	SCHNEIDER ELECTRIC USA, INC.		JOB NAME:	MEMPHIS VA MEDICAL CENTER	EQUIPMENT DESIGNATION: BUILDING 5, 1, 1A	
			JOB LOCATION:	MEMPHIS, TENNESSEE	EQUIPMENT TYPE: VISN 9	
	CHECKED BY: JAY KIRLOSKAR		DRAWN BY:	SEAN BUCHANAN	DRAWING TYPE: MEMPHIS VA MEDICAL CENTER NETWORK DIAGRAM	
	CHECKED DATE: FEBRUARY 1, 2012		ENGR:	IBRAHIM BULLE		
	PLANT LOCATION: P48 (ENG SVCS - PROJECTS)		DATE:	FEBRUARY 1, 2012	DWC# 29489782-027-CM	
			DRAWING STATUS:	AS BUILT		

REV	DESCRIPTION	BY	DATE	-	----	--	--/--/--	-	----	--	--/--/--
-	----	--	--/--/--	-	----	--	--/--/--	-	----	--	--/--/--



WIRELESS LEGEND

M

MODEM

R

ROUTER

E

ETHERNET SWITCH

X

ETHERNET EXTENDER

J

ETHERNET JACK/DROP

A

RADIO ACCESS FPOINT

A1

RADIO REMOTE

B

BULKHEAD LIGHTNING ARRESTER

- NOTES:
1.

EQUIPMENT INSTALLED UNDER VA-AEM PROJECT CONTRACT # GS-07F-9462G.
2.

BELDEN 9842 COMMUNICATIONS CABLE TO TERMINATE ON MODBUS COMMUNICATION MODULE AS SHOWN. CONNECTION FROM MODBUS MODULE TO MECHANICAL METER IS THE RESPONSIBILITY OF THE MECHANICAL CONTRACTOR, INSTALLED PER PRODUCT SPECIFICATIONS.
3.

RTU ENCLOSURE AND ALL CONNECTED WIRING, INCLUDING POWER AND COMMUNICATIONS, SHALL NEITHER BE INSTALLED WITHIN, NOR PASS THROUGH AN AREA CLASSIFIED AS HAZARDOUS, AS DEFINED BY THE NEC.
4.

ELECTRICAL EQUIPMENT SHALL BE INSTALLED, OPERATED, SERVICED, AND MAINTAINED ONLY BY QUALIFIED PERSONNEL.
5.

ALL DETAILS LISTED HEREIN ARE FOR GENERAL REFERENCE ONLY AND SHALL BE USED ACCORDINGLY. EQUIPMENT SHALL BE INSTALLED IN ACCORDANCE WITH ALL LOCAL AND NEC CODES. REFER TO PROVIDED SQUARE D POWERLOGIC FACTORY ASSEMBLED ENCLOSURES INSTRUCTION BULLETIN 63230-020-59 A1 FOR ADDITIONAL DETAILS, PERTAINING TO THE 7550 RTU ENCLOSURE INSTALLATION.
6.

ALL ENCLOSURES PROVIDED BY SCHNEIDER ELECTRIC, WHICH INCLUDE REMOTE RADIOS, WILL BE EQUIPPED WITH FACTORY INSTALLED LIGHTNING ARRESTORS.
7.

ALL WIRELESS NETWORK ENCLOSURES AND ITS ASSOCIATED CONTENTS, COAX CABLES/HARDWARE, ETHERNET JACKS, ANTENNAS, AND ALL OTHER MISCELLANEOUS HARDWARE REQUIRED TO COMPLETE THE INSTALLATION OF THE WIRELESS SYSTEM IS THE RESPONSIBILITY OF THE MECHANICAL CONTRACTOR.
8.

ALL OUTDOOR COAX TERMINATIONS SHALL BE MADE WITH A SELF HEALING WEATHERPROOF TAPE SUCH AS 3M SCOTCH 2228 OR EQUAL.
9.

COAX CABLE MUST BE GROUNDED TO A PERMANENT SYSTEM GROUND.

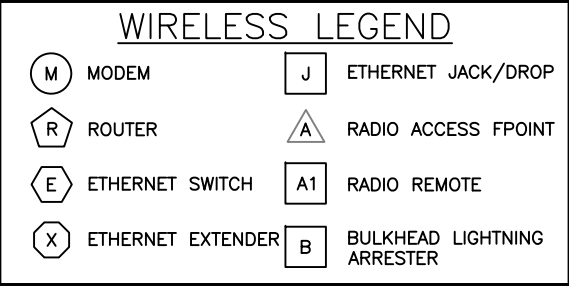
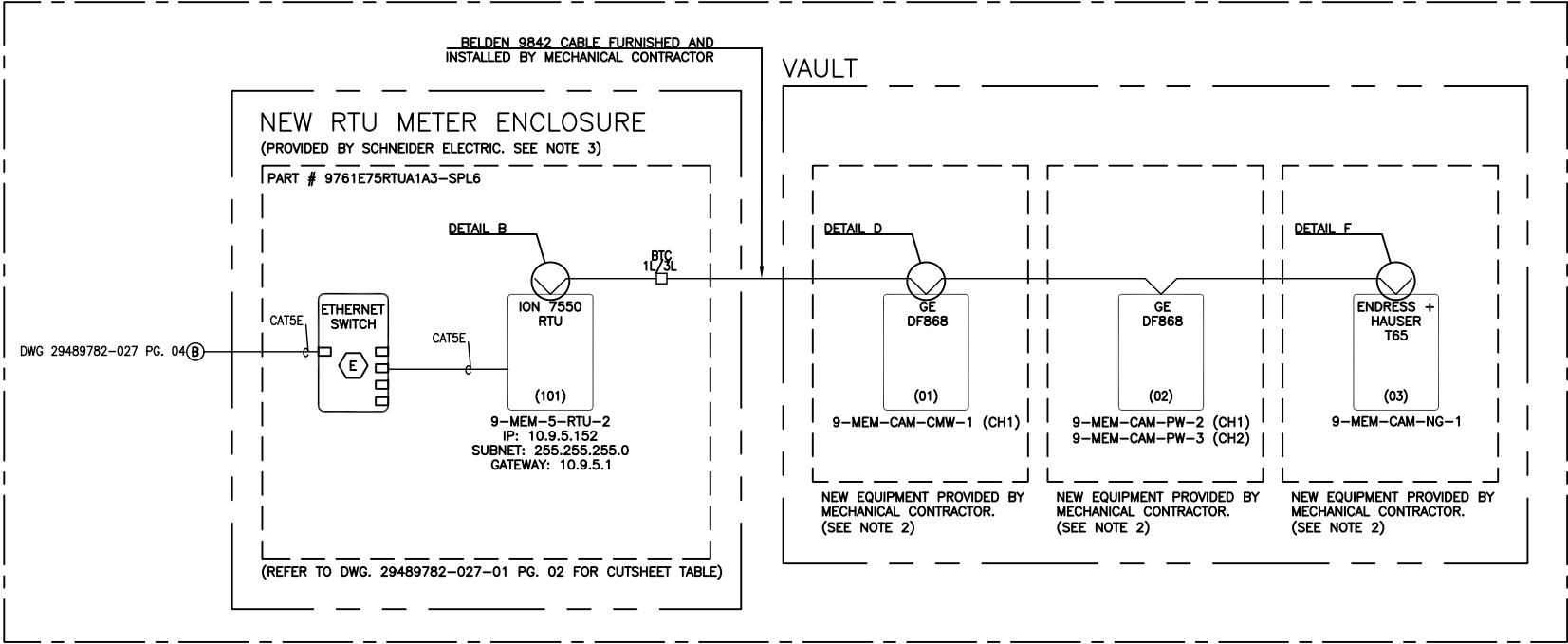
NETWORK DIAGRAM

MEMPHIS VA MEDICAL CENTER

© SCHNEIDER ELECTRIC USA, INC. THIS DRAWING AND/OR SPECIFICATIONS CONTAINS INFORMATION PROPRIETARY TO SCHNEIDER ELECTRIC, IT IS SUBMITTED IN CONFIDENCE AND IS TO BE USED SOLELY FOR THE PURPOSE FOR WHICH IT IS FURNISHED. SCHNEIDER ELECTRIC OWNS ALL COPYRIGHT, DESIGN AND INVENTION RIGHTS FOR THE DATA AND/OR MATERIAL DISCLOSED HEREIN. ALL DRAWINGS AND WRITTEN MATERIAL APPEARING HEREIN MAY NOT BE REPRODUCED, TRANSMITTED, DISCLOSED OR USED OTHERWISE IN WHOLE OR IN PART WITHOUT WRITTEN AUTHORIZATION OF SCHNEIDER ELECTRIC.	SCHNEIDER ELECTRIC USA, INC.		JOB NAME:	MEMPHIS VA MEDICAL CENTER	EQUIPMENT DESIGNATION: BUILDING 1, 7	
			JOB LOCATION:	MEMPHIS, TENNESSEE	EQUIPMENT TYPE: VISN 9	
	CHECKED BY: JAY KIRLOSKAR		DRAWN BY:	SEAN BUCHANAN	DRAWING TYPE: MEMPHIS VA MEDICAL CENTER NETWORK DIAGRAM	
	CHECKED DATE: FEBRUARY 1, 2012		ENGR:	IBRAHIM BULLE		
	PLANT LOCATION: P48 (ENG SVCS - PROJECTS)		DATE:	FEBRUARY 1, 2012	<div>Schneider Electric</div>	
		DRAWING STATUS: AS BUILT				DWG# 29489782-027-CM
					PG 05	OF 08
					REV	--

REV	DESCRIPTION	BY	DATE	—	----	--	---/---/---	-	----	--	---/---/---
—	----	--	---/---/---	-	----	--	---/---/---	-	----	--	---/---/---

BUILDING 5



NOTES:

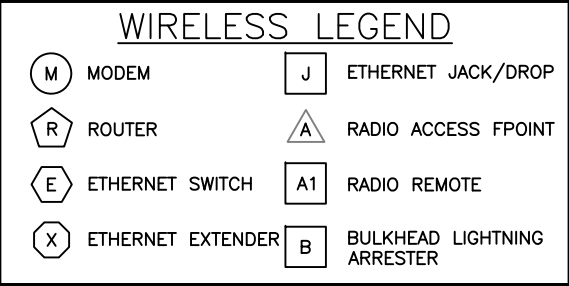
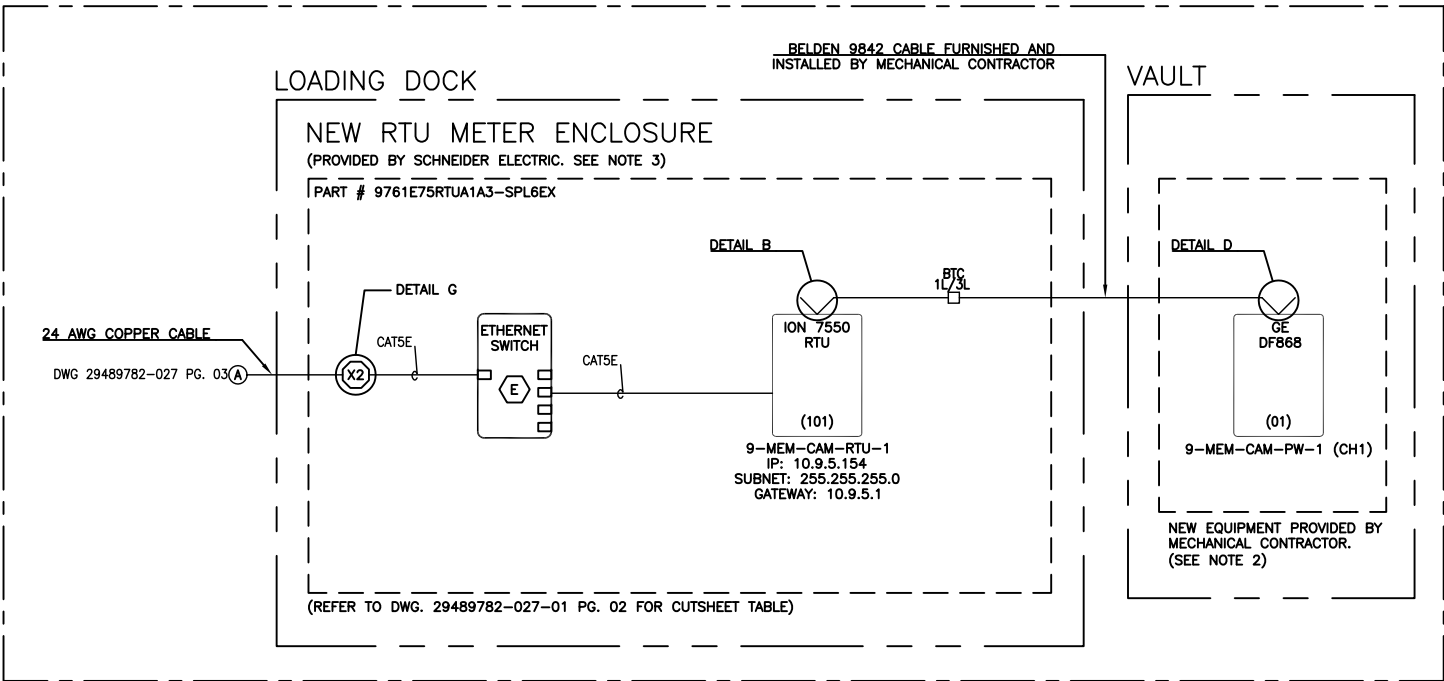
- EQUIPMENT INSTALLED UNDER VA-AEM PROJECT CONTRACT # GS-07F-9462G.
- BELDEN 9842 COMMUNICATIONS CABLE TO TERMINATE ON MODBUS COMMUNICATION MODULE AS SHOWN. CONNECTION FROM MODBUS MODULE TO MECHANICAL METER IS THE RESPONSIBILITY OF THE MECHANICAL CONTRACTOR, INSTALLED PER PRODUCT SPECIFICATIONS.
- RTU ENCLOSURE AND ALL CONNECTED WIRING, INCLUDING POWER AND COMMUNICATIONS, SHALL NEITHER BE INSTALLED WITHIN, NOR PASS THROUGH AN AREA CLASSIFIED AS HAZARDOUS, AS DEFINED BY THE NEC.
- ELECTRICAL EQUIPMENT SHALL BE INSTALLED, OPERATED, SERVICED, AND MAINTAINED ONLY BY QUALIFIED PERSONNEL.
- ALL DETAILS LISTED HEREIN ARE FOR GENERAL REFERENCE ONLY AND SHALL BE USED ACCORDINGLY. EQUIPMENT SHALL BE INSTALLED IN ACCORDANCE WITH ALL LOCAL AND NEC CODES. REFER TO PROVIDED SQUARE D POWERLOGIC FACTORY ASSEMBLED ENCLOSURES INSTRUCTION BULLETIN 63230-020-59 A1 FOR ADDITIONAL DETAILS, PERTAINING TO THE 7550 RTU ENCLOSURE INSTALLATION.
- ALL ENCLOSURES PROVIDED BY SCHNEIDER ELECTRIC, WHICH INCLUDE REMOTE RADIOS, WILL BE EQUIPPED WITH FACTORY INSTALLED LIGHTNING ARRESTORS.
- ALL WIRELESS NETWORK ENCLOSURES AND ITS ASSOCIATED CONTENTS, COAX CABLES/HARDWARE, ETHERNET JACKS, ANTENNAS, AND ALL OTHER MISCELLANEOUS HARDWARE REQUIRED TO COMPLETE THE INSTALLATION OF THE WIRELESS SYSTEM IS THE RESPONSIBILITY OF THE MECHANICAL CONTRACTOR.
- ALL OUTDOOR COAX TERMINATIONS SHALL BE MADE WITH A SELF HEALING WEATHERPROOF TAPE SUCH AS 3M SCOTCH 2228 OR EQUAL.
- COAX CABLE MUST BE GROUNDED TO A PERMANENT SYSTEM GROUND.

NETWORK DIAGRAM
MEMPHIS VA MEDICAL CENTER

© SCHNEIDER ELECTRIC USA, INC. THIS DRAWING AND/OR SPECIFICATIONS CONTAINS INFORMATION PROPRIETARY TO SCHNEIDER ELECTRIC, IT IS SUBMITTED IN CONFIDENCE AND IS TO BE USED SOLELY FOR THE PURPOSE FOR WHICH IT IS FURNISHED. SCHNEIDER ELECTRIC OWNS ALL COPYRIGHT, DESIGN AND INVENTION RIGHTS FOR THE DATA AND/OR MATERIAL DISCLOSED HEREIN. ALL DRAWINGS AND WRITTEN MATERIAL APPEARING HEREIN MAY NOT BE REPRODUCED, TRANSMITTED, DISCLOSED OR USED OTHERWISE IN WHOLE OR IN PART WITHOUT WRITTEN AUTHORIZATION OF SCHNEIDER ELECTRIC.	SCHNEIDER ELECTRIC USA, INC.		JOB NAME:	MEMPHIS VA MEDICAL CENTER	EQUIPMENT DESIGNATION: BUILDING 5	
			JOB LOCATION:	MEMPHIS, TENNESSEE	EQUIPMENT TYPE: VISN 9	
	CHECKED BY: JAY KIRLOSKAR		DRAWN BY:	SEAN BUCHANAN	DRAWING TYPE: MEMPHIS VA MEDICAL CENTER NETWORK DIAGRAM	
	CHECKED DATE: FEBRUARY 1, 2012		ENGR:	IBRAHIM BULLE		
	PLANT LOCATION: P48 (ENG SVCS – PROJECTS)		DATE:	FEBRUARY 1, 2012	Schneider Electric	
			DRAWING STATUS:	AS BUILT		
				DWG# 29489782-027-CM	PG 06 OF 08	REV –

REV	DESCRIPTION	BY	DATE	-	----	--	--/---/---	-	----	--	--/---/---
-	----	--	---/---/---	-	----	--	---/---/---	-	----	--	---/---/---


CAMPUS



NOTES:

- EQUIPMENT INSTALLED UNDER VA-AEM PROJECT CONTRACT # GS-07F-9462G.
- BELDEN 9842 COMMUNICATIONS CABLE TO TERMINATE ON MODBUS COMMUNICATION MODULE AS SHOWN. CONNECTION FROM MODBUS MODULE TO MECHANICAL METER IS THE RESPONSIBILITY OF THE MECHANICAL CONTRACTOR, INSTALLED PER PRODUCT SPECIFICATIONS.
- RTU ENCLOSURE AND ALL CONNECTED WIRING, INCLUDING POWER AND COMMUNICATIONS, SHALL NEITHER BE INSTALLED WITHIN, NOR PASS THROUGH AN AREA CLASSIFIED AS HAZARDOUS, AS DEFINED BY THE NEC.
- ELECTRICAL EQUIPMENT SHALL BE INSTALLED, OPERATED, SERVICED, AND MAINTAINED ONLY BY QUALIFIED PERSONNEL.
- ALL DETAILS LISTED HEREIN ARE FOR GENERAL REFERENCE ONLY AND SHALL BE USED ACCORDINGLY. EQUIPMENT SHALL BE INSTALLED IN ACCORDANCE WITH ALL LOCAL AND NEC CODES. REFER TO PROVIDED SQUARE D POWERLOGIC FACTORY ASSEMBLED ENCLOSURES INSTRUCTION BULLETIN 63230-020-59 A1 FOR ADDITIONAL DETAILS, PERTAINING TO THE 7550 RTU ENCLOSURE INSTALLATION.
- ALL ENCLOSURES PROVIDED BY SCHNEIDER ELECTRIC, WHICH INCLUDE REMOTE RADIOS, WILL BE EQUIPPED WITH FACTORY INSTALLED LIGHTNING ARRESTORS.
- ALL WIRELESS NETWORK ENCLOSURES AND ITS ASSOCIATED CONTENTS, COAX CABLES/HARDWARE, ETHERNET JACKS, ANTENNAS, AND ALL OTHER MISCELLANEOUS HARDWARE REQUIRED TO COMPLETE THE INSTALLATION OF THE WIRELESS SYSTEM IS THE RESPONSIBILITY OF THE MECHANICAL CONTRACTOR.
- ALL OUTDOOR COAX TERMINATIONS SHALL BE MADE WITH A SELF HEALING WEATHERPROOF TAPE SUCH AS 3M SCOTCH 2228 OR EQUAL.
- COAX CABLE MUST BE GROUNDED TO A PERMANENT SYSTEM GROUND.

NETWORK DIAGRAM
MEMPHIS VA MEDICAL CENTER

© SCHNEIDER ELECTRIC USA, INC. THIS DRAWING AND/OR SPECIFICATIONS CONTAINS INFORMATION PROPRIETARY TO SCHNEIDER ELECTRIC, IT IS SUBMITTED IN CONFIDENCE AND IS TO BE USED SOLELY FOR THE PURPOSE FOR WHICH IT IS FURNISHED. SCHNEIDER ELECTRIC OWNS ALL COPYRIGHT, DESIGN AND INVENTION RIGHTS FOR THE DATA AND/OR MATERIAL DISCLOSED HEREIN. ALL DRAWINGS AND WRITTEN MATERIAL APPEARING HEREIN MAY NOT BE REPRODUCED, TRANSMITTED, DISCLOSED OR USED OTHERWISE IN WHOLE OR IN PART WITHOUT WRITTEN AUTHORIZATION OF SCHNEIDER ELECTRIC.	SCHNEIDER ELECTRIC USA, INC.		JOB NAME:	MEMPHIS VA MEDICAL CENTER	EQUIPMENT DESIGNATION:		CAMPUS			
			JOB LOCATION:	MEMPHIS, TENNESSEE	EQUIPMENT TYPE:		VISN 9			
			DRAWN BY:	SEAN BUCHANAN	DRAWING TYPE:		MEMPHIS VA MEDICAL CENTER NETWORK DIAGRAM			
	CHECKED BY:	JAY KIRLOSKAR	ENGR:	IBRAHIM BULLE						
	CHECKED DATE:	FEBRUARY 1, 2012	DATE:	FEBRUARY 1, 2012						
	PLANT LOCATION:	P48 (ENG SVCS – PROJECTS)	DRAWING STATUS:		AS BUILT	DWG#	29489782-027-CM	PG 07	OF 08	REV –

REV	DESCRIPTION	BY	DATE										
REV	DESCRIPTION	BY	DATE										
---	----	---	---/---/---	---	----	---	---	---	---	---	---	---	---

