

REV	DESCRIPTION	BY	DATE	-	----	--	--/---/---	-	----	--	--/---/---
-	----	--	--/---/---	-	----	--	--/---/---	-	----	--	--/---/---

MEMPHIS VA

MEMPHIS, TENNESSEE

ADVANCED METERING PROJECT

AS BUILT

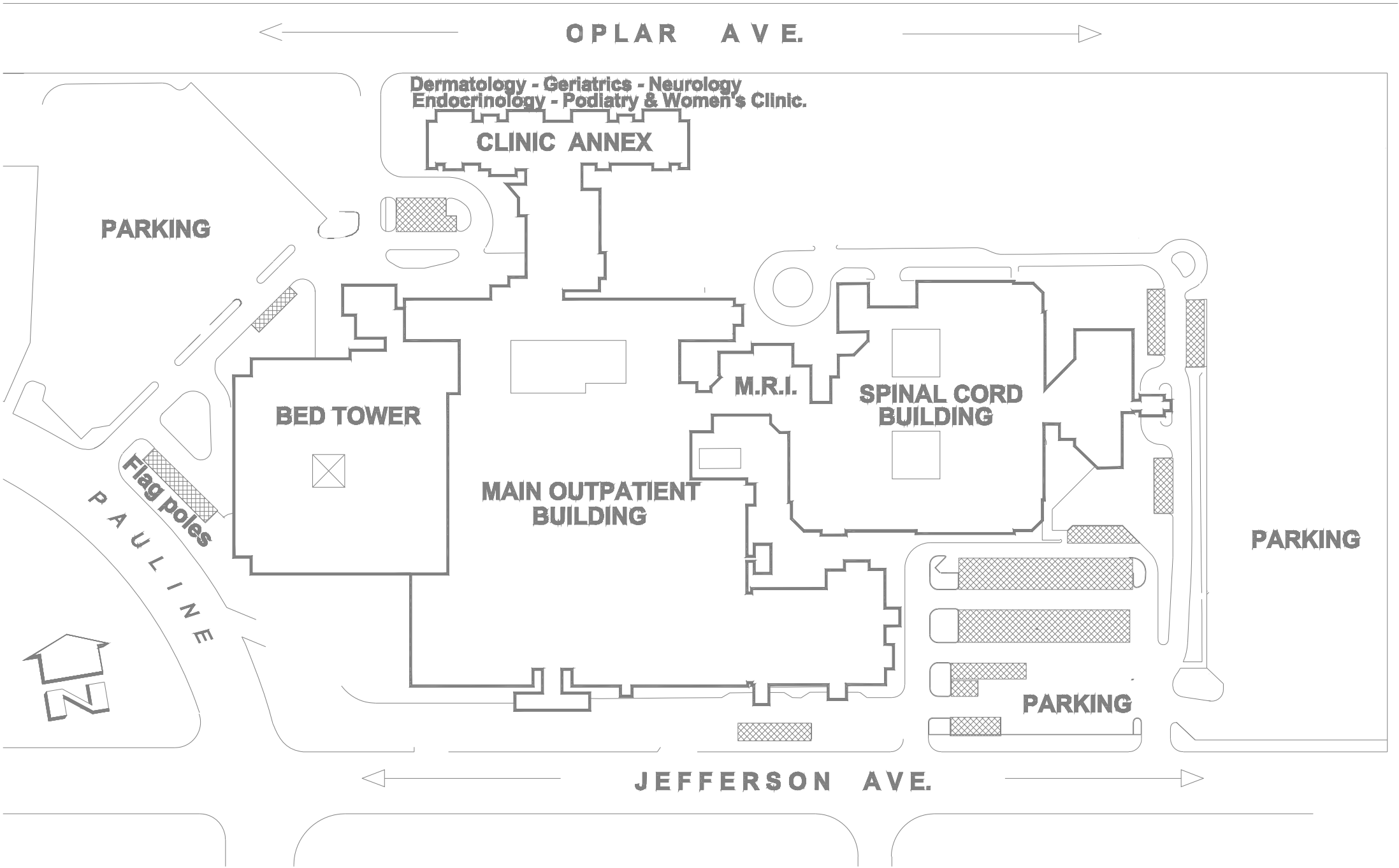
TABLE OF CONTENTS				
DRAWING NUMBER	PAGE	REV	DRAWING TYPE	STATUS
27786962-070-01	01		TITLE SHEET & TABLE OF CONTENTS	AS BUILT
27786962-070-01	02		TYPICAL CUTSHEET TABLE REFERENCE	AS BUILT
27786962-070-01	03		MEMPHIS VA SITE PLAN	AS BUILT
27786962-070-01	04		MEMPHIS VA FLOOR PLAN (BUILDING 1A)	AS BUILT
27786962-070-01	05		MEMPHIS VA FLOOR PLAN (BUILDING 5)	AS BUILT
27786962-070-01	06		MEMPHIS VA FLOOR PLAN (BUILDING 6)	AS BUILT
27786962-070-01	07		MEMPHIS VA FLOOR PLAN (BUILDING 7)	AS BUILT
27786962-070-CM	08		MEMPHIS VA OVERALL NETWORK LAYOUT (BUILDINGS 6, 7, 5, 1A)	AS BUILT
27786962-070-CM	09		MEMPHIS VA NETWORK DIAGRAM (BUILDINGS 6, 7)	AS BUILT
27786962-070-CM	10		MEMPHIS VA NETWORK DIAGRAM (BUILDINGS 5, 1A)	AS BUILT
27786962-070-CM	11		MEMPHIS VA NETWORK DETAILS	AS BUILT
27786962-070-01	12		MEMPHIS VA PARTIAL ONE-LINE	AS BUILT
27786962-070-01	13		MEMPHIS VA WIRING SCHEMATIC	AS BUILT
27786962-070-01	14		MEMPHIS VA WIRING SCHEMATIC	AS BUILT
27786962-070-01	15		MEMPHIS VA TYPICAL INSTALL COMPONENT MOUNTING	AS BUILT

REV	DESCRIPTION	BY	DATE	-	----	--	--/--/--	-	----	--	--/--/--
-	----	--	--/--/--	-	----	--	--/--/--	-	----	--	--/--/--

CUTSHEET REFERENCE TABLE		
Document Number	Description	File Name Reference
01	Square D PowerLogic Factory Assembled Enclosures Installation Guide	Item 1 – Enclosure Instruction Bulletin.pdf
02	Phoenix Contact 24VDC Power Supply Data Sheet	Item 2 – 2866750 PC Power supply.pdf
03	Maxrad Access Point Radio Antenna Data Sheet	Item 3 – Antenna Maxrad MFB9157.pdf
04	Kathrein–Scala TY–900 Remote Radio Antenna Data Sheet	Item 4 – Antenna TY–900.pdf
05	Bussman Compact Circuit Protector Disconnect Switch Data Sheet	Item 5 – CCP Fusible disconnect.pdf
06	Bussman FNQ–R Fuse Specification Sheet	Item 6 – FNQ–R Fuses.pdf
07	Flex–Core Shorting Terminal Block Data Sheet	Item 7 – IKU Shorting Terminal Blocks.pdf
08	PD–395 Lightning Arrestor Specification Sheet	Item 8 – Lightning Arrestor Parameters.pdf
09	Heliax Coaxial Cable Data Sheet	Item 9 – LDF4RN–50A Heliax Coaxial Cable.pdf
10	MDS iNET–II 900 Ethernet Remote Radio Specification Sheet	Item 10 – MDS iNETII 900 Mhz Radio.pdf
11	MDS Wireless Radio Enclosure Specification Sheet	Item 11 – MDS Packaged Radio Series Data Sheet.pdf
12	Kathrein–Scala Access Point Antenna (Low Gain) Data Sheet	Item 12 – Unity Omni Antenna.pdf
13	Flex–Core CT Data Sheet	Item 13 – Flex Core CT Data Sheet. pdf
14	Schneider Electric 9070T250D32 Industrial Control Transformer	Item 14 – Control Power Transformer.pdf
15	MTS Wireless Mounting Hardware Product Guide	Item 15 – Steel Wireless Mounting Hardware.pdf
16	Square D PowerLogic Power Meter 800 Series Product Application Guide	Item 16 – PM800 Spec Overview.pdf
17	Belden Serial Communication Cable Specification Sheet	Item 17 – Belden Cables.pdf
18	Equipment Penetration and Firestopping Installation Guide	Item 18 – Penetration & Firestopping.pdf
19	Equipment Mounting Anchor Installation Guide	Item 19 – Mounting Anchor.pdf
20	Cable Tie Specification Guide	Item 20 – Cable Ties.pdf
21	Cisco Ethernet Hardwire Router Data Sheet	Item 21 – Cisco Router.pdf
22	Cisco Ethernet Wireless Router Data Sheet	Item 22 – Cisco Wireless Router.pdf
23	Ethernet Extender Specification Sheet	Item 23 – EIR–Extend–0408ds Ethernet Extender.pdf
24	Mean Well Power Supply Data Sheet	Item 24 – MDR–40 Power Supply Spec.pdf
25	Panel Mount Wireless Antenna Specifcaition Sheet	Item 25 – MP800900 PCTEL Panel Mount Antenna.pdf
26	DSL Modem Data Sheet	Item 26 – Netopia 4600 Series Router.pdf
27	Wireless Enclosure Installation Guide	Item 27 – MDS P–60 Enclosure Installation Guidelines.pdf
28	Ntron Eight Port Ethernet Switch	Item 28 – 108TX_Datasheet.pdf
29	E–Linx Five Port Ethernet Switch	Item 29 – EIR205 Series 2709–ds Industrial DCV Switch.pdf

© SCHNEIDER ELECTRIC USA, INC. THIS DRAWING AND/OR SPECIFICATIONS CONTAINS INFORMATION PROPRIETARY TO SCHNEIDER ELECTRIC, IT IS SUBMITTED IN CONFIDENCE AND IS TO BE USED SOLELY FOR THE PURPOSE FOR WHICH IT IS FURNISHED. SCHNEIDER ELECTRIC OWNS ALL COPYRIGHT, DESIGN AND INVENTION RIGHTS FOR THE DATA AND/OR MATERIAL DISCLOSED HEREIN. ALL DRAWINGS AND WRITTEN MATERIAL APPEARING HEREIN MAY NOT BE REPRODUCED, TRANSMITTED, DISCLOSED OR USED OTHERWISE IN WHOLE OR IN PART WITHOUT WRITTEN AUTHORIZATION OF SCHNEIDER ELECTRIC.	SCHNEIDER ELECTRIC USA, INC.	JOB NAME:	MEMPHIS VA	EQUIPMENT DESIGNATION:	-
		JOB LOCATION:	MEMPHIS, TN	EQUIPMENT TYPE:	VISN 9
		DRAWN BY:	BRANT DETTINGER	DRAWING TYPE:	TYPICAL CUTSHEET TABLE REFERENCE
	CHECKED BY:	ALAN WATSON	ENGR:	<div>Schneider Electric</div>	
	CHECKED DATE:	OCTOBER 28, 2010	DATE:		
	PLANT LOCATION:	P48 (ENG SVCS – PROJECTS)	DRAWING STATUS:	AS BUILT	DWG# 27786962–070–01
					PG 02 OF 15
					REV –

REV	DESCRIPTION	BY	DATE	-	----	--	--/--/--	-	----	--	--/--/--
-	----	--	--/--/--	-	----	--	--/--/--	-	----	--	--/--/--

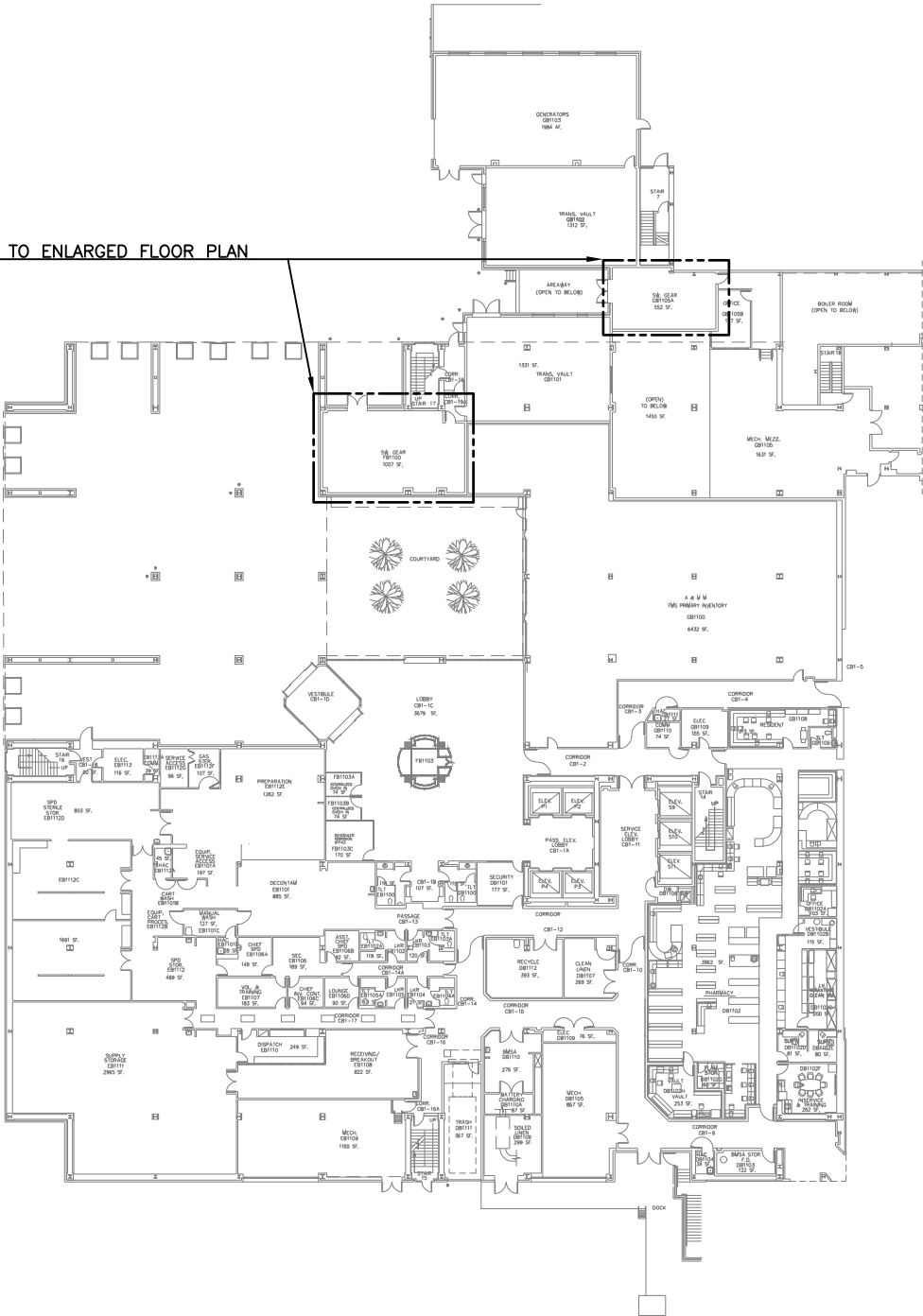


OVERALL SITE PLAN
MEMPHIS VA

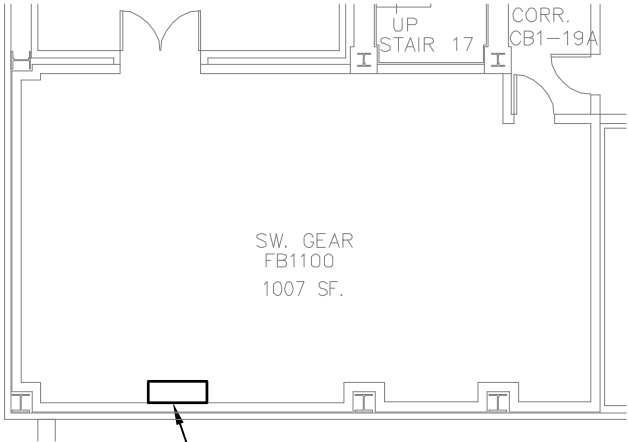
<div>© SCHNEIDER ELECTRIC USA, INC.</div> <div>THIS DRAWING AND/OR SPECIFICATIONS CONTAINS INFORMATION PROPRIETARY TO SCHNEIDER ELECTRIC, IT IS SUBMITTED IN CONFIDENCE AND IS TO BE USED SOLELY FOR THE PURPOSE FOR WHICH IT IS FURNISHED. SCHNEIDER ELECTRIC OWNS ALL COPYRIGHT, DESIGN AND INVENTION RIGHTS FOR THE DATA AND/OR MATERIAL DISCLOSED HEREIN. ALL DRAWINGS AND WRITTEN MATERIAL APPEARING HEREIN MAY NOT BE REPRODUCED, TRANSMITTED, DISCLOSED OR USED OTHERWISE IN WHOLE OR IN PART WITHOUT WRITTEN AUTHORIZATION OF SCHNEIDER ELECTRIC.</div>	SCHNEIDER ELECTRIC USA, INC.		JOB NAME:	MEMPHIS VA	EQUIPMENT DESIGNATION:	-
			JOB LOCATION:	MEMPHIS, TN	EQUIPMENT TYPE:	VISN 9
	CHECKED BY: ALAN WATSON		DRAWN BY:	BRANT DETTINGER	DRAWING TYPE: MEMPHIS VA OVERALL SITE PLAN	
	CHECKED DATE: OCTOBER 28, 2010		ENGR:	FAUSTO ZAMUDIO		
	PLANT LOCATION: P48 (ENG SVCS – PROJECTS)		DATE:	OCTOBER 28, 2010	<div>Schneider Electric</div>	
			DRAWING STATUS:	AS BUILT		
				DWG#	27786962-070-01	PG 03 OF 15 REV -

REV	DESCRIPTION	BY	DATE	-	----	--	--/--/--	-	----	--	--/--/--
-	----	--	--/--/--	-	----	--	--/--/--	-	----	--	--/--/--

REFER TO ENLARGED FLOOR PLAN



BUILDING 1A FLOOR PLAN
MEMPHIS VA



NEW (2) METER ENCLOSURE
ROOM FB1100 FLOOR PLAN
MEMPHIS VA



NEW (2) METER ENCLOSURE
ROOM GB1105A FLOOR PLAN
MEMPHIS VA

© SCHNEIDER ELECTRIC USA, INC.
THIS DRAWING AND/OR SPECIFICATIONS CONTAINS INFORMATION PROPRIETARY TO SCHNEIDER ELECTRIC, IT IS SUBMITTED IN CONFIDENCE AND IS TO BE USED SOLELY FOR THE PURPOSE FOR WHICH IT IS FURNISHED. SCHNEIDER ELECTRIC OWNS ALL COPYRIGHT, DESIGN AND INVENTION RIGHTS FOR THE DATA AND/OR MATERIAL DISCLOSED HEREIN. ALL DRAWINGS AND WRITTEN MATERIAL APPEARING HEREIN MAY NOT BE REPRODUCED, TRANSMITTED, DISCLOSED OR USED OTHERWISE IN WHOLE OR IN PART WITHOUT WRITTEN AUTHORIZATION OF SCHNEIDER ELECTRIC.

SCHNEIDER ELECTRIC USA, INC.

CHECKED BY: ALAN WATSON

CHECKED DATE: OCTOBER 28, 2010

PLANT LOCATION: P48 (ENG SVCS – PROJECTS)

JOB NAME: MEMPHIS VA

JOB LOCATION: MEMPHIS, TN

DRAWN BY: BRANT DETTINGER

ENGR: FAUSTO ZAMUDIO

DATE: OCTOBER 28, 2010

DRAWING STATUS: AS BUILT

EQUIPMENT DESIGNATION: BUILDING 1A

EQUIPMENT TYPE: VISN 9

DRAWING TYPE: MEMPHIS VA FLOOR PLAN

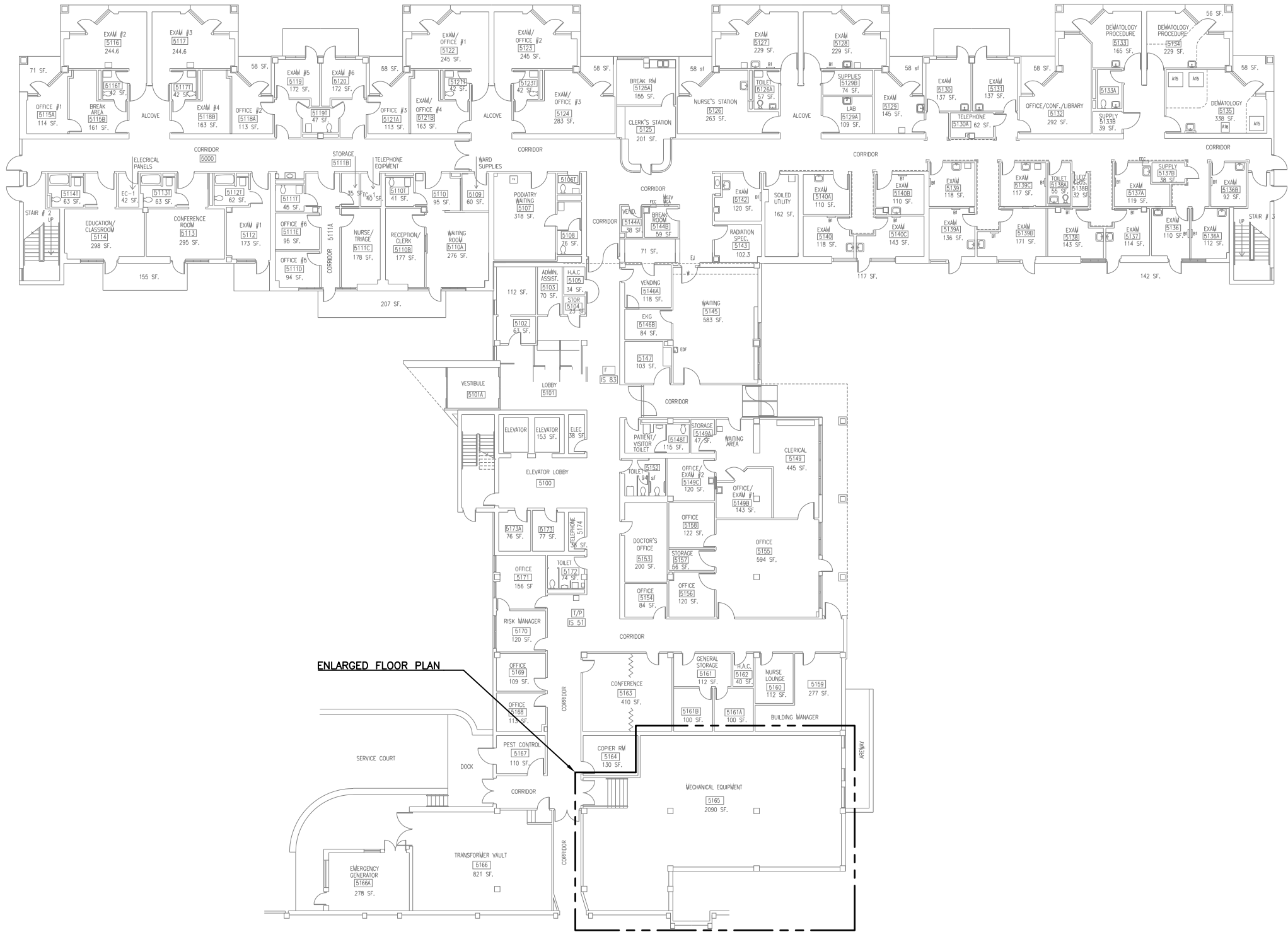


DWG# 27786962-070-01

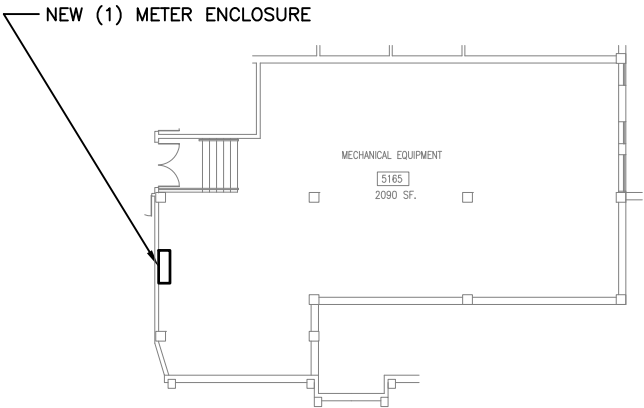
PG 03 OF 15

REV -

REV	DESCRIPTION	BY	DATE	-	----	--	--/--/--	-	----	--	--/--/--
-	----	--	--/--/--	-	----	--	--/--/--	-	----	--	--/--/--



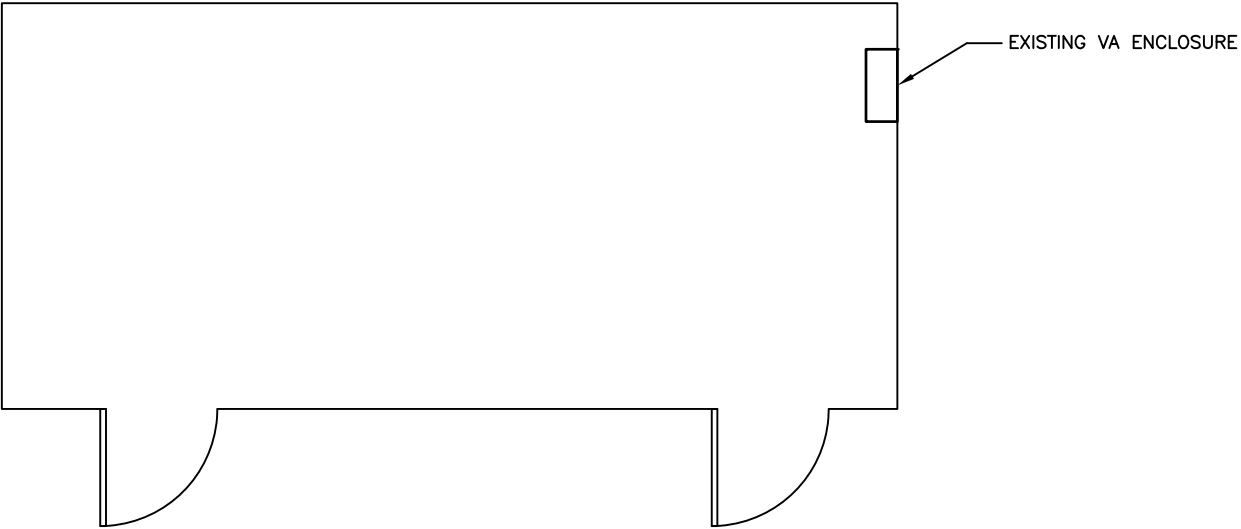
BUILDING 5 FLOOR PLAN
MEMPHIS VA



ROOM 5165 FLOOR PLAN
MEMPHIS VA

© SCHNEIDER ELECTRIC USA, INC. THIS DRAWING AND/OR SPECIFICATIONS CONTAINS INFORMATION PROPRIETARY TO SCHNEIDER ELECTRIC, IT IS SUBMITTED IN CONFIDENCE AND IS TO BE USED SOLELY FOR THE PURPOSE FOR WHICH IT IS FURNISHED. SCHNEIDER ELECTRIC OWNS ALL COPYRIGHT, DESIGN AND INVENTION RIGHTS FOR THE DATA AND/OR MATERIAL DISCLOSED HEREIN. ALL DRAWINGS AND WRITTEN MATERIAL APPEARING HEREIN MAY NOT BE REPRODUCED, TRANSMITTED, DISCLOSED OR USED OTHERWISE IN WHOLE OR IN PART WITHOUT WRITTEN AUTHORIZATION OF SCHNEIDER ELECTRIC.	SCHNEIDER ELECTRIC USA, INC.		JOB NAME:	MEMPHIS VA	EQUIPMENT DESIGNATION:	BUILDING 5					
			JOB LOCATION:	MEMPHIS, TN	EQUIPMENT TYPE:	VISN 9					
	CHECKED BY:		ALAN WATSON	DRAWN BY:	BRANT DETTINGER	DRAWING TYPE:	MEMPHIS VA FLOOR PLAN				
	CHECKED DATE:		OCTOBER 28, 2010	ENGR:	FAUSTO ZAMUDIO	<div>Schneider Electric</div>					
	PLANT LOCATION:		P48 (ENG SVCS – PROJECTS)	DATE:	OCTOBER 28, 2010						
			DRAWING STATUS:	AS BUILT	DWG#	27786962–070–01			PG 05	OF 15	REV –

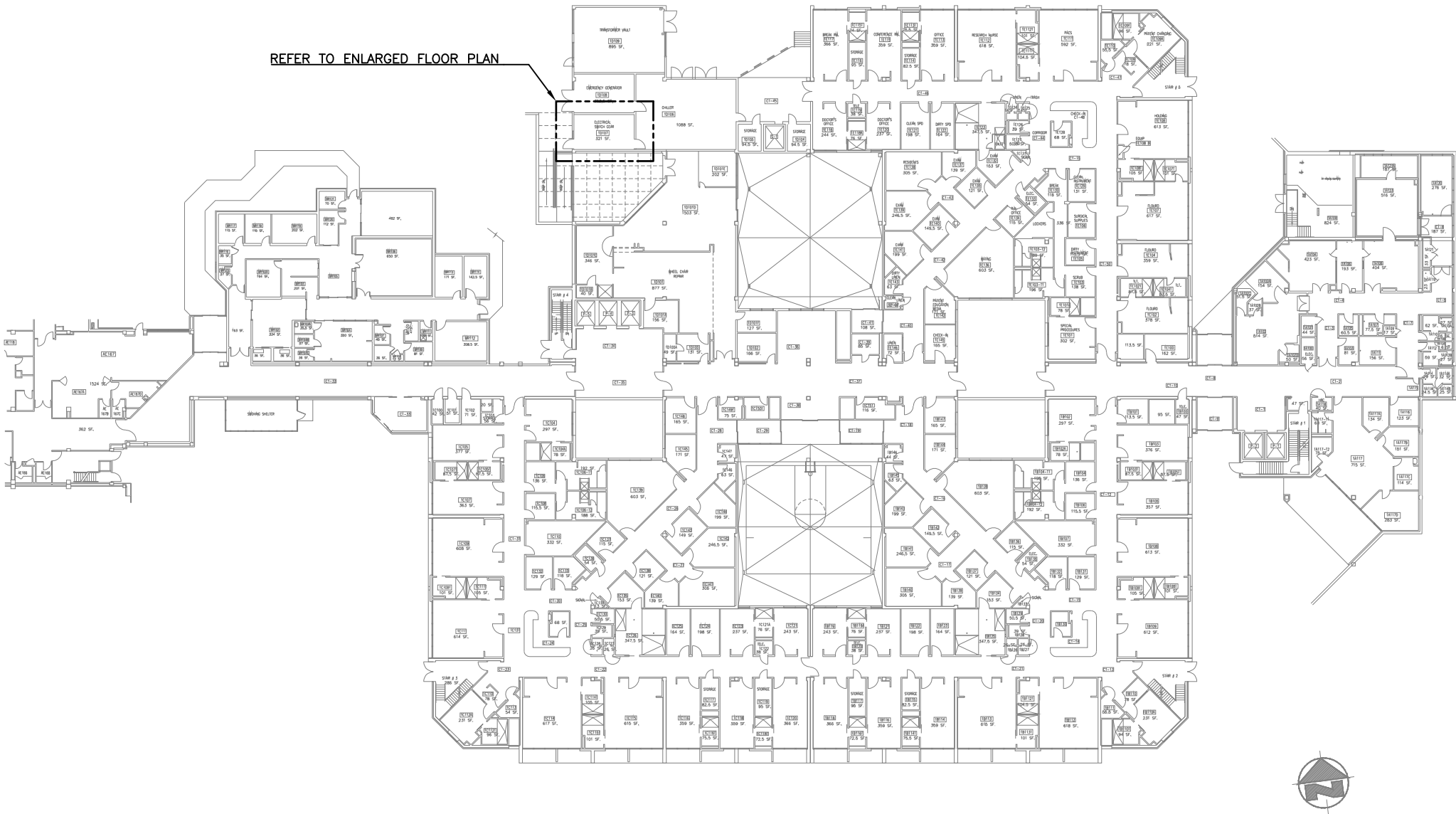
REV	DESCRIPTION	BY	DATE	-	----	--	--/---/---	-	----	--	--/---/---
-	----	--	--/---/---	-	----	--	--/---/---	-	----	--	--/---/---



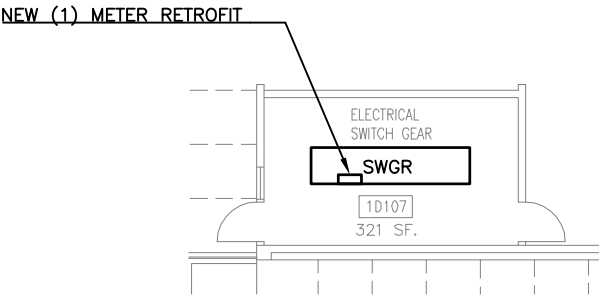
BUILDING 6, MAIN TELEPHONE ROOM FLOOR PLAN
MEMPHIS VA

© SCHNEIDER ELECTRIC USA, INC. THIS DRAWING AND/OR SPECIFICATIONS CONTAINS INFORMATION PROPRIETARY TO SCHNEIDER ELECTRIC, IT IS SUBMITTED IN CONFIDENCE AND IS TO BE USED SOLELY FOR THE PURPOSE FOR WHICH IT IS FURNISHED. SCHNEIDER ELECTRIC OWNS ALL COPYRIGHT, DESIGN AND INVENTION RIGHTS FOR THE DATA AND/OR MATERIAL DISCLOSED HEREIN. ALL DRAWINGS AND WRITTEN MATERIAL APPEARING HEREIN MAY NOT BE REPRODUCED, TRANSMITTED, DISCLOSED OR USED OTHERWISE IN WHOLE OR IN PART WITHOUT WRITTEN AUTHORIZATION OF SCHNEIDER ELECTRIC.	SCHNEIDER ELECTRIC USA, INC.		JOB NAME:	MEMPHIS VA	EQUIPMENT DESIGNATION:	BUILDING 6			
			JOB LOCATION:	MEMPHIS, TN	EQUIPMENT TYPE:	VISN 9			
			DRAWN BY:	BRANT DETTINGER	DRAWING TYPE:	MEMPHIS VA FLOOR PLAN			
	CHECKED BY:	ALAN WATSON	ENGR:	FAUSTO ZAMUDIO	<div>Schneider Electric</div>				
	CHECKED DATE:	OCTOBER 28, 2010	DATE:	OCTOBER 28, 2010					
	PLANT LOCATION:	P48 (ENG SVCS – PROJECTS)		DRAWING STATUS:	AS BUILT	DWG#	27786962–070–01	PG 06	OF 15


REV	DESCRIPTION	BY	DATE	-	----	--	--/--/--	-	----	--	--/--/--
-	----	--	--/--/--	-	----	--	--/--/--	-	----	--	--/--/--



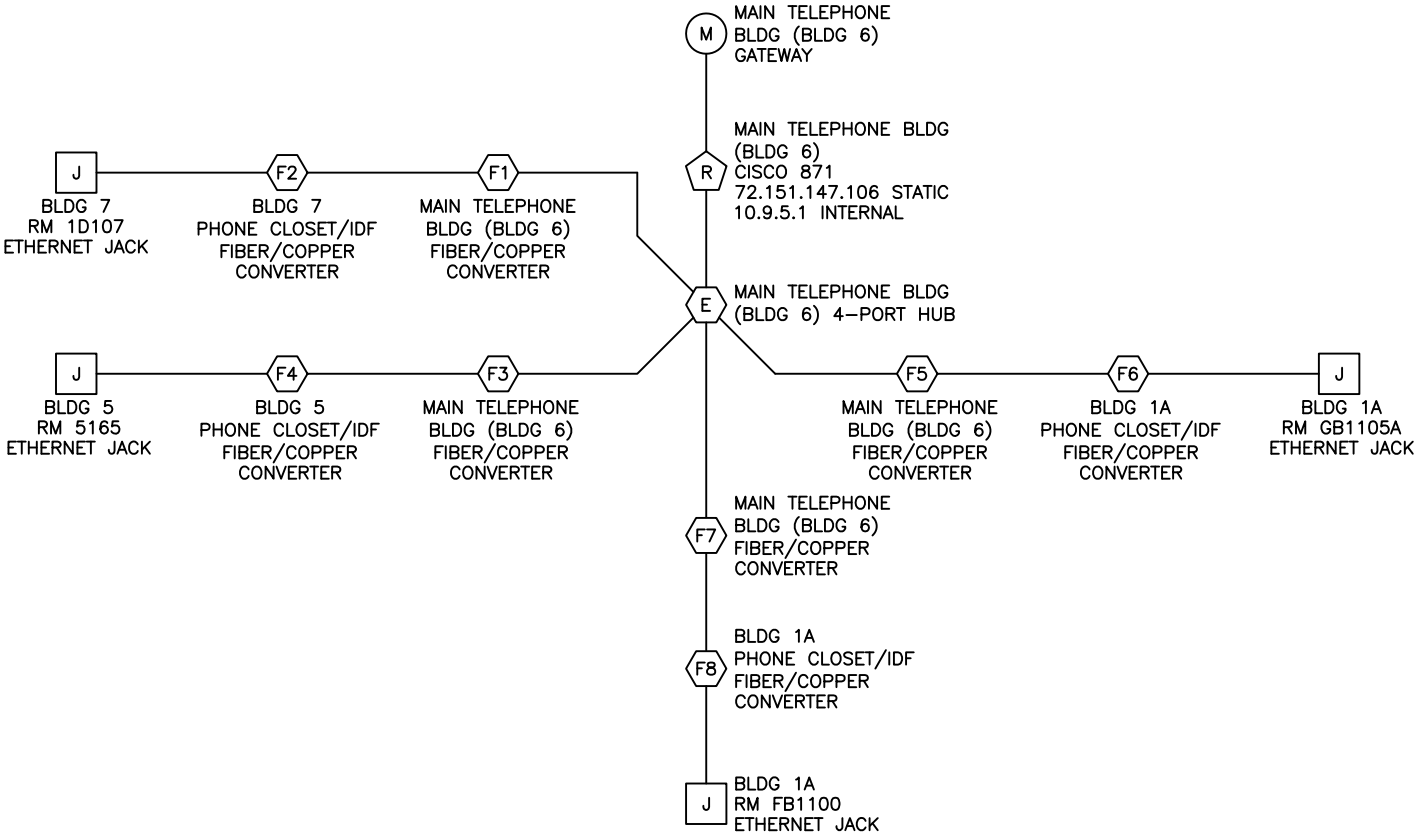
BUILDING 7 FLOOR PLAN
MEMPHIS VA



ROOM D107 FLOOR PLAN
MEMPHIS VA

© SCHNEIDER ELECTRIC USA, INC. THIS DRAWING AND/OR SPECIFICATIONS CONTAINS INFORMATION PROPRIETARY TO SCHNEIDER ELECTRIC, IT IS SUBMITTED IN CONFIDENCE AND IS TO BE USED SOLELY FOR THE PURPOSE FOR WHICH IT IS FURNISHED. SCHNEIDER ELECTRIC OWNS ALL COPYRIGHT, DESIGN AND INVENTION RIGHTS FOR THE DATA AND/OR MATERIAL DISCLOSED HEREIN. ALL DRAWINGS AND WRITTEN MATERIAL APPEARING HEREIN MAY NOT BE REPRODUCED, TRANSMITTED, DISCLOSED OR USED OTHERWISE IN WHOLE OR IN PART WITHOUT WRITTEN AUTHORIZATION OF SCHNEIDER ELECTRIC.	SCHNEIDER ELECTRIC USA, INC.		JOB NAME:	MEMPHIS VA	EQUIPMENT DESIGNATION:	BUILDING 7				
			JOB LOCATION:	MEMPHIS, TN	EQUIPMENT TYPE:	VISN 9				
			DRAWN BY:	BRANT DETTINGER	DRAWING TYPE:	MEMPHIS VA FLOOR PLAN				
	CHECKED BY:	ALAN WATSON	ENGR:	FAUSTO ZAMUDIO						
	CHECKED DATE:	OCTOBER 28, 2010	DATE:	OCTOBER 28, 2010						
PLANT LOCATION:	P48 (ENG SVCS – PROJECTS)		DRAWING STATUS:	AS BUILT	DWG#	27786962-070-01		PG 07	OF 15	REV –

REV	DESCRIPTION	BY	DATE	-	----	--	--/---/---	-	----	--	--/---/---
-	----	--	--/---/---	-	----	--	--/---/---	-	----	--	--/---/---



WIRELESS LEGEND			
	MODEM		ETHERNET JACK/DROP
	ROUTER		RADIO ACCESS FPOINT
	ETHERNET SWITCH		RADIO REMOTE
	FIBER TRANSCEIVER		BULKHEAD LIGHTNING ARRESTER

NOTES:

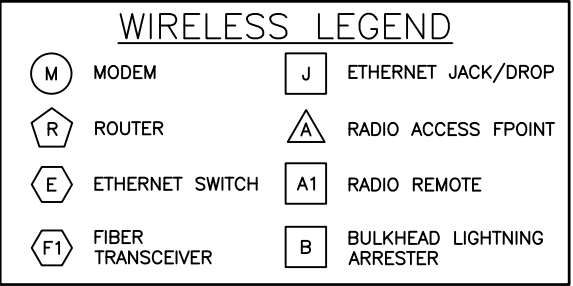
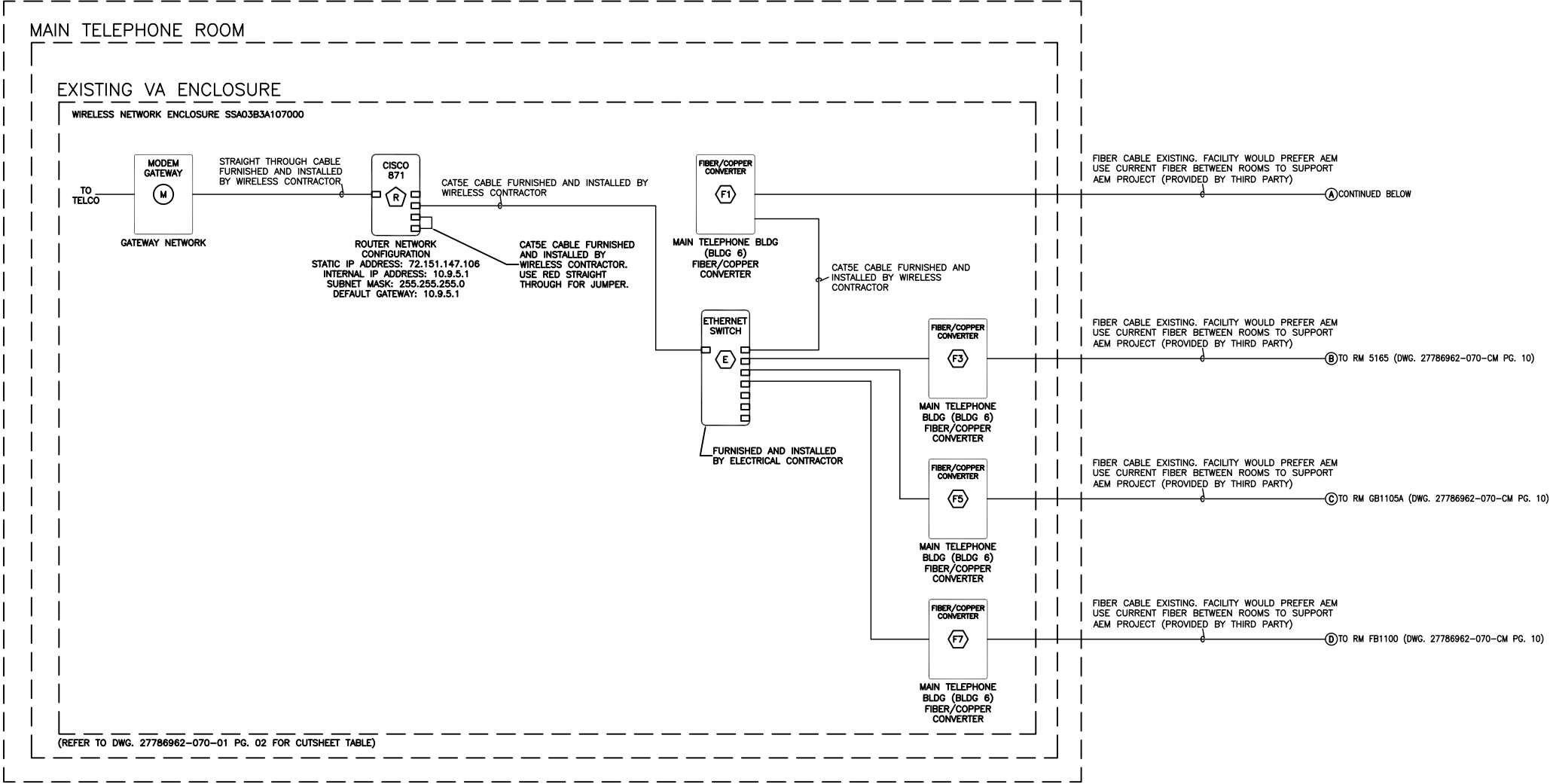
- ELECTRICAL EQUIPMENT SHALL BE INSTALLED, OPERATED, SERVICED, AND MAINTAINED ONLY BY QUALIFIED PERSONNEL.
- ALL DETAILS LISTED HEREIN ARE FOR GENERAL REFERENCE ONLY AND SHALL BE USED ACCORDINGLY. EQUIPMENT SHALL BE INSTALLED IN ACCORDANCE WITH ALL LOCAL AND NEC CODES. REFER TO PROVIDED SQUARE D POWERLOGIC FACTORY ASSEMBLED ENCLOSURES INSTRUCTION BULLETIN 63230-020-59 A1 FOR ADDITIONAL DETAILS, PERTAINING TO THE METER ENCLOSURE INSTALLATION.
- ALL ENCLOSURES PROVIDED BY SCHNEIDER ELECTRIC THAT WILL HOUSE REMOTE RADIOS PROVIDED BY THE WIRELESS CONTRACTOR WILL BE EQUIPPED WITH INTEGRATED LIGHTNING ARRESTORS INSTALLED. 24VDC CONTROL POWER WILL BE MADE AVAILABLE FOR POWERING.
- ALL WIRELESS NETWORK ENCLOSURES AND ITS ASSOCIATED CONTENTS, COAX CABLES/HARDWARE, ETHERNET JACKS, ANTENNAS, AND ALL OTHER MISCELLANEOUS HARDWARE NEEDED TO COMPLETE THE INSTALLATION OF THE WIRELESS SYSTEM IS THE RESPONSIBILITY OF THE WIRELESS CONTRACTOR AS DIRECTED BY SCHNEIDER ELECTRIC.
- ALL OUTDOOR COAX TERMINATIONS SHALL BE MADE WITH A SELF HEALING WEATHERPROOF TAPE SUCH AS 3M SCOTCH 2228 OR EQUAL.
- COAX CABLE MUST BE GROUNDED TO A PERMANENT SYSTEM GROUND.

NETWORK DIAGRAM
MEMPHIS VAMC

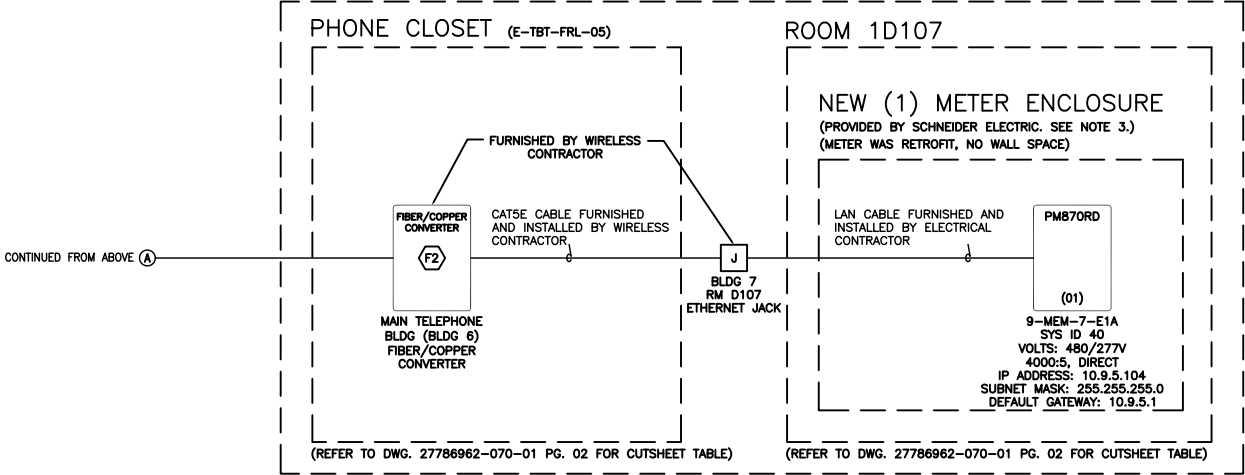
© SCHNEIDER ELECTRIC USA, INC. THIS DRAWING AND/OR SPECIFICATIONS CONTAINS INFORMATION PROPRIETARY TO SCHNEIDER ELECTRIC, IT IS SUBMITTED IN CONFIDENCE AND IS TO BE USED SOLELY FOR THE PURPOSE FOR WHICH IT IS FURNISHED. SCHNEIDER ELECTRIC OWNS ALL COPYRIGHT, DESIGN AND INVENTION RIGHTS FOR THE DATA AND/OR MATERIAL DISCLOSED HEREIN. ALL DRAWINGS AND WRITTEN MATERIAL APPEARING HEREIN MAY NOT BE REPRODUCED, TRANSMITTED, DISCLOSED OR USED OTHERWISE IN WHOLE OR IN PART WITHOUT WRITTEN AUTHORIZATION OF SCHNEIDER ELECTRIC.	SCHNEIDER ELECTRIC USA, INC.		JOB NAME:	MEMPHIS VA	EQUIPMENT DESIGNATION:		BUILDINGS, 6, 7, 5, 1A				
			JOB LOCATION:	MEMPHIS, TN	EQUIPMENT TYPE:		VISN 9				
			DRAWN BY:	BRANT DETTINGER	DRAWING TYPE:		OVERALL NETWORK LAYOUT				
	CHECKED BY:		ALAN WATSON		ENGR:		FAUSTO ZAMUDIO		<div>Schneider Electric</div>		
	CHECKED DATE:		OCTOBER 28, 2010		DATE:		OCTOBER 28, 2010				
	PLANT LOCATION:		P48 (ENG SVCS – PROJECTS)		DRAWING STATUS:		AS BUILT				
						DWG# 27786962-070-CM		PG 08	OF 15	REV –	

REV	DESCRIPTION	BY	DATE	—	----	—	—	—/—/—	—	----	—	—	—/—/—
—	----	—	—/—/—	—	----	—	—	—/—/—	—	----	—	—	—/—/—

BUILDING 6




BUILDING 7



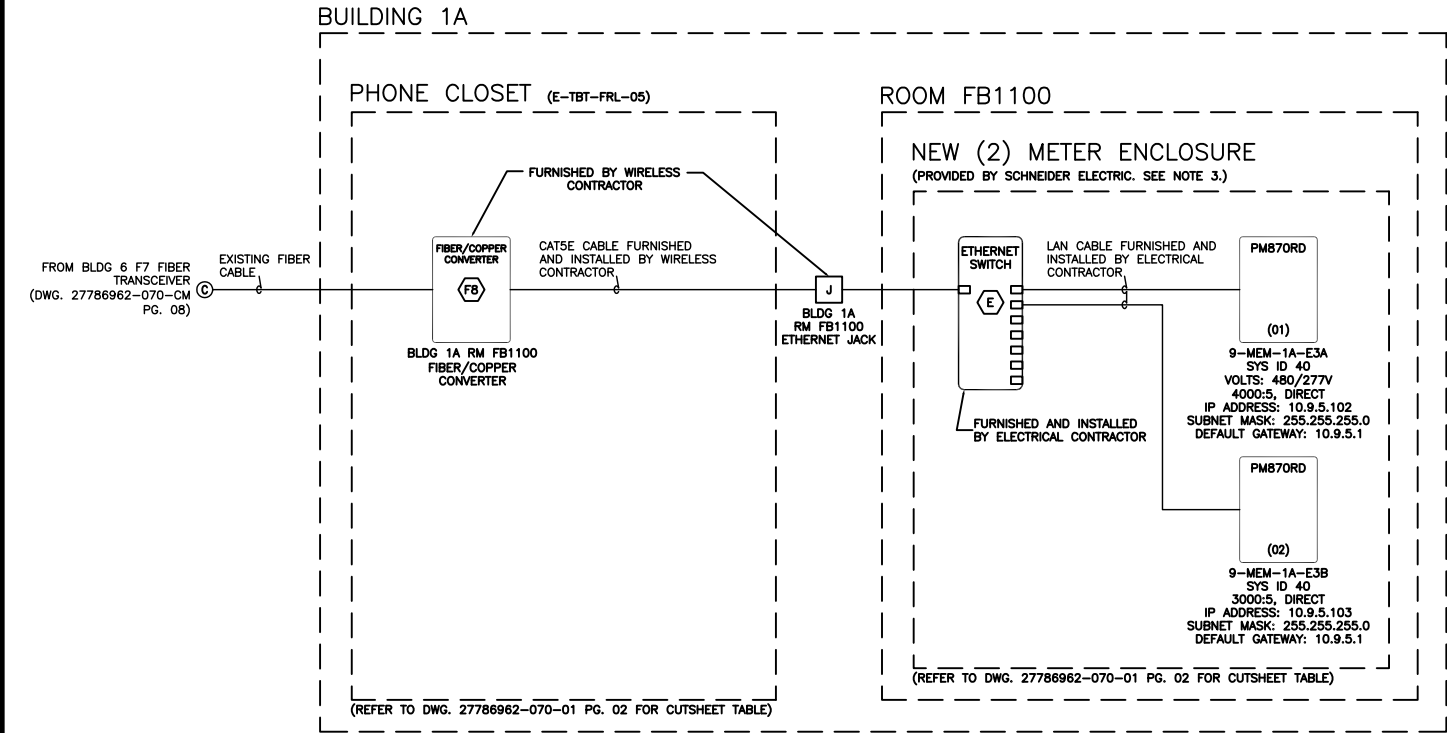
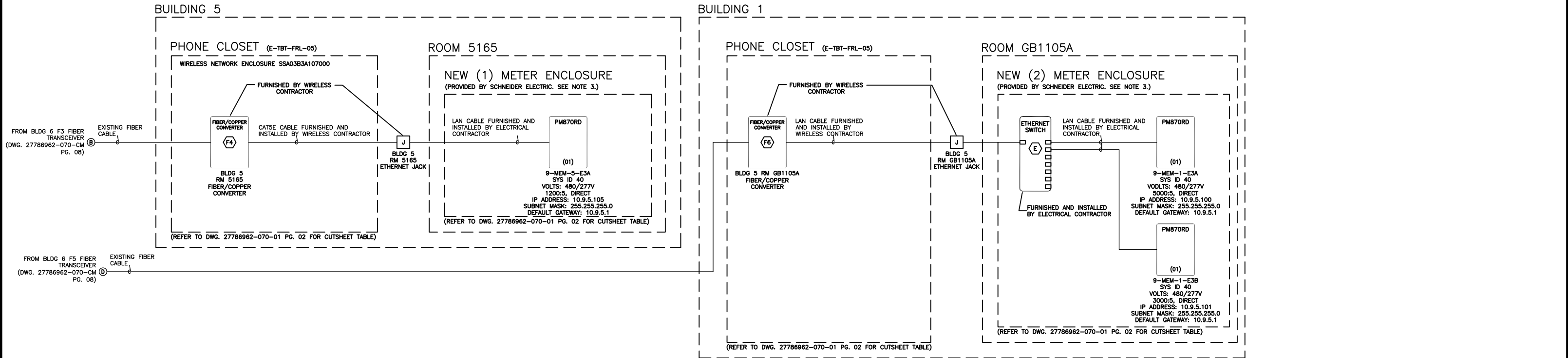
NOTES:

- ELECTRICAL EQUIPMENT SHALL BE INSTALLED, OPERATED, SERVICED, AND MAINTAINED ONLY BY QUALIFIED PERSONNEL.
- ALL DETAILS LISTED HEREIN ARE FOR GENERAL REFERENCE ONLY AND SHALL BE USED ACCORDINGLY. EQUIPMENT SHALL BE INSTALLED IN ACCORDANCE WITH ALL LOCAL AND NEC CODES. REFER TO PROVIDED SQUARE D POWERLOGIC FACTORY ASSEMBLED ENCLOSURES INSTRUCTION BULLETIN 63230-020-59 A1 FOR ADDITIONAL DETAILS, PERTAINING TO THE METER ENCLOSURE INSTALLATION.
- ALL ENCLOSURES PROVIDED BY SCHNEIDER ELECTRIC THAT WILL HOUSE REMOTE RADIOS PROVIDED BY THE WIRELESS CONTRACTOR WILL BE EQUIPPED WITH INTEGRATED LIGHTNING ARRESTORS INSTALLED. 24VDC CONTROL POWER WILL BE MADE AVAILABLE FOR POWERING.
- ALL WIRELESS NETWORK ENCLOSURES AND ITS ASSOCIATED CONTENTS, COAX CABLES/HARDWARE, ETHERNET JACKS, ANTENNAS, AND ALL OTHER MISCELLANEOUS HARDWARE NEEDED TO COMPLETE THE INSTALLATION OF THE WIRELESS SYSTEM IS THE RESPONSIBILITY OF THE WIRELESS CONTRACTOR AS DIRECTED BY SCHNEIDER ELECTRIC.
- ALL OUTDOOR COAX TERMINATIONS SHALL BE MADE WITH A SELF HEALING WEATHERPROOF TAPE SUCH AS 3M SCOTCH 2228 OR EQUAL.
- COAX CABLE MUST BE GROUNDED TO A PERMANENT SYSTEM GROUND.

NETWORK DIAGRAM
MEMPHIS VAMC

© SCHNEIDER ELECTRIC USA, INC. THIS DRAWING AND/OR SPECIFICATIONS CONTAINS INFORMATION PROPRIETARY TO SCHNEIDER ELECTRIC, IT IS SUBMITTED IN CONFIDENCE AND IS TO BE USED SOLELY FOR THE PURPOSE FOR WHICH IT IS FURNISHED. SCHNEIDER ELECTRIC OWNS ALL COPYRIGHT, DESIGN AND INVENTION RIGHTS FOR THE DATA AND/OR MATERIAL DISCLOSED HEREIN. ALL DRAWINGS AND WRITTEN MATERIAL APPEARING HEREIN MAY NOT BE REPRODUCED, TRANSMITTED, DISCLOSED OR USED OTHERWISE IN WHOLE OR IN PART WITHOUT WRITTEN AUTHORIZATION OF SCHNEIDER ELECTRIC.	SCHNEIDER ELECTRIC USA, INC.		JOB NAME:	MEMPHIS VA	EQUIPMENT DESIGNATION:	BUILDINGS 6, 7			
			JOB LOCATION:	MEMPHIS, TN	EQUIPMENT TYPE:	VISN 9			
			DRAWN BY:	BRANT DETTINGER	DRAWING TYPE:	MEMPHIS VA NETWORK DIAGRAM			
	CHECKED BY:	ALAN WATSON	ENGR:	FAUSTO ZAMUDIO					
	CHECKED DATE:	OCTOBER 28, 2010	DATE:	OCTOBER 28, 2010					
	PLANT LOCATION:	P48 (ENG SVCS – PROJECTS)		DRAWING STATUS:	AS BUILT	DWG#	27786962-070-CM	PG 09	OF 15

REV	DESCRIPTION	BY	DATE	—	----	—	—	—/—/—	—	----	—	—	—/—/—
—	----	—	—/—/—	—	----	—	—	—/—/—	—	----	—	—	—/—/—



WIRELESS LEGEND			
(M)	MODEM	(J)	ETHERNET JACK/DROP
(R)	ROUTER	(A)	RADIO ACCESS FPOINT
(E)	ETHERNET SWITCH	(A1)	RADIO REMOTE
(F1)	FIBER TRANSCEIVER	(B)	BULKHEAD LIGHTNING ARRESTER

NOTES:

- ELECTRICAL EQUIPMENT SHALL BE INSTALLED, OPERATED, SERVICED, AND MAINTAINED ONLY BY QUALIFIED PERSONNEL.
- ALL DETAILS LISTED HEREIN ARE FOR GENERAL REFERENCE ONLY AND SHALL BE USED ACCORDINGLY. EQUIPMENT SHALL BE INSTALLED IN ACCORDANCE WITH ALL LOCAL AND NEC CODES. REFER TO PROVIDED SQUARE D POWERLOGIC FACTORY ASSEMBLED ENCLOSURES INSTRUCTION BULLETIN 63230-020-59 A1 FOR ADDITIONAL DETAILS, PERTAINING TO THE METER ENCLOSURE INSTALLATION.
- ALL ENCLOSURES PROVIDED BY SCHNEIDER ELECTRIC THAT WILL HOUSE REMOTE RADIOS PROVIDED BY THE WIRELESS CONTRACTOR WILL BE EQUIPPED WITH INTEGRATED LIGHTNING ARRESTORS INSTALLED. 24VDC CONTROL POWER WILL BE MADE AVAILABLE FOR POWERING.
- ALL WIRELESS NETWORK ENCLOSURES AND ITS ASSOCIATED CONTENTS, COAX CABLES/HARDWARE, ETHERNET JACKS, ANTENNAS, AND ALL OTHER MISCELLANEOUS HARDWARE NEEDED TO COMPLETE THE INSTALLATION OF THE WIRELESS SYSTEM IS THE RESPONSIBILITY OF THE WIRELESS CONTRACTOR AS DIRECTED BY SCHNEIDER ELECTRIC.
- ALL OUTDOOR COAX TERMINATIONS SHALL BE MADE WITH A SELF HEALING WEATHERPROOF TAPE SUCH AS 3M SCOTCH 2228 OR EQUAL.
- COAX CABLE MUST BE GROUNDED TO A PERMANENT SYSTEM GROUND.

NETWORK DIAGRAM
MEMPHIS VAMC

© SCHNEIDER ELECTRIC USA, INC. THIS DRAWING AND/OR SPECIFICATIONS CONTAINS INFORMATION PROPRIETARY TO SCHNEIDER ELECTRIC, IT IS SUBMITTED IN CONFIDENCE AND IS TO BE USED SOLELY FOR THE PURPOSE FOR WHICH IT IS FURNISHED. SCHNEIDER ELECTRIC OWNS ALL COPYRIGHT, DESIGN AND INVENTION RIGHTS FOR THE DATA AND/OR MATERIAL DISCLOSED HEREIN. ALL DRAWINGS AND WRITTEN MATERIAL APPEARING HEREIN MAY NOT BE REPRODUCED, TRANSMITTED, DISCLOSED OR USED OTHERWISE IN WHOLE OR IN PART WITHOUT WRITTEN AUTHORIZATION OF SCHNEIDER ELECTRIC.	SCHNEIDER ELECTRIC USA, INC.		JOB NAME:	MEMPHIS VA	EQUIPMENT DESIGNATION:		BUILDINGS 5, 1A		
			JOB LOCATION:	MEMPHIS, TN	EQUIPMENT TYPE:		VISN 9		
	CHECKED BY:		ALAN WATSON	DRAWN BY:	BRANT DETTINGER	DRAWING TYPE:		MEMPHIS VA NETWORK DIAGRAM	
	CHECKED DATE:		OCTOBER 28, 2010	ENGR:	FAUSTO ZAMUDIO	<div>Schneider Electric</div>			
	PLANT LOCATION:		P48 (ENG SVCS – PROJECTS)	DATE:	OCTOBER 28, 2010				
			DRAWING STATUS:	AS BUILT	DWG#	27786962-070-CM	PG 10	OF 15	REV –

REV	DESCRIPTION	BY	DATE	-	----	--	--/--/--	-	----	--	--/--/--
-	----	--	--/--/--	-	----	--	--/--/--	-	----	--	--/--/--

PIN 8 — BRN —

PIN 7 — WHT/BRN —

PIN 6 — ORG —

PIN 5 — WHT/BLU —

PIN 4 — BLU —

PIN 3 — WHT/ORG —

PIN 2 — GRN —

PIN 1 — WHT/GRN —

PIN 1

PIN 2

PIN 3

PIN 4

PIN 5

PIN 6

PIN 7

PIN 8

— WHT/ORG — PIN 1

— ORG — PIN 2

— WHT/GRN — PIN 3

— BLU — PIN 4

— WHT/BLU — PIN 5

— GRN — PIN 6

— WHT/BRN — PIN 7

— BRN — PIN 8

PIN 8

PIN 7

PIN 6

PIN 5

PIN 4

PIN 3

PIN 2

PIN 1

RECEIVE (3&6)

TRANSMIT (1&2)

DETAIL A

CAT5 CROSSOVER CABLE WIRING

RxTxTx-Tx+Rx-Rx++-12345678

4-WIRE CONNECTION

RxTxTx-Tx+Rx-Rx++-12345678

TERM. BIAS JUMPER (2-WIRE)

UP/ON

DOWN/OFF

DETAIL B

PM800 SERIES DIP SWITCH SETTINGS FOR RS485 BIASING AND TERMINATION

- ABC - ## - E#A,B,C...

VISN # SITE NAME BLDG # METERS IN ENCLOSURE

INSTALL TYPE:
ENCLOSURE E1 = RETROFIT
ENCLOSURE E3 = WALL MOUNT

DETAIL C

TYPICAL METER NAMING CONVENTION

--	--	--	--	--

--	--	--	--	--

© SCHNEIDER ELECTRIC USA, INC.
THIS DRAWING AND/OR SPECIFICATIONS CONTAINS INFORMATION PROPRIETARY TO SCHNEIDER ELECTRIC, IT IS SUBMITTED IN CONFIDENCE AND IS TO BE USED SOLELY FOR THE PURPOSE FOR WHICH IT IS FURNISHED. SCHNEIDER ELECTRIC OWNS ALL COPYRIGHT, DESIGN AND INVENTION RIGHTS FOR THE DATA AND/OR MATERIAL DISCLOSED HEREIN. ALL DRAWINGS AND WRITTEN MATERIAL APPEARING HEREIN MAY NOT BE REPRODUCED, TRANSMITTED, DISCLOSED OR USED OTHERWISE IN WHOLE OR IN PART WITHOUT WRITTEN AUTHORIZATION OF SCHNEIDER ELECTRIC.

SCHNEIDER ELECTRIC USA, INC.

CHECKED BY:ALAN WATSON

CHECKED DATE:OCTOBER 28, 2010

PLANT LOCATION:P48 (ENG SVCS – PROJECTS)

JOB NAME:MEMPHIS VA

JOB LOCATION:MEMPHIS, TN

DRAWN BY:BRANT DETTINGER

ENGR:FAUSTO ZAMUDIO

DATE:OCTOBER 28, 2010

DRAWING STATUS:AS BUILT

EQUIPMENT DESIGNATION:-

EQUIPMENT TYPE:VISN 9

DRAWING TYPE:MEMPHIS VA NETWORK DETAILS

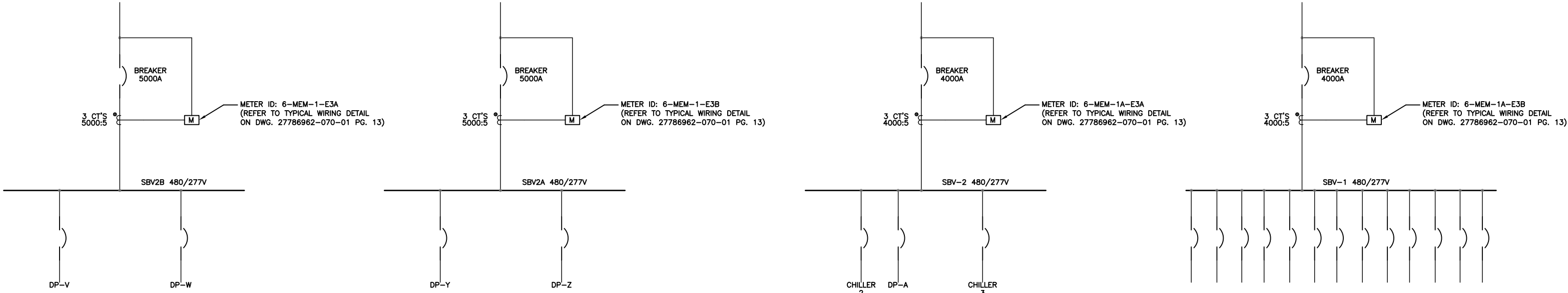
SchneiderElectric

DWG#27786962-070-CM

PG 11 OF 15

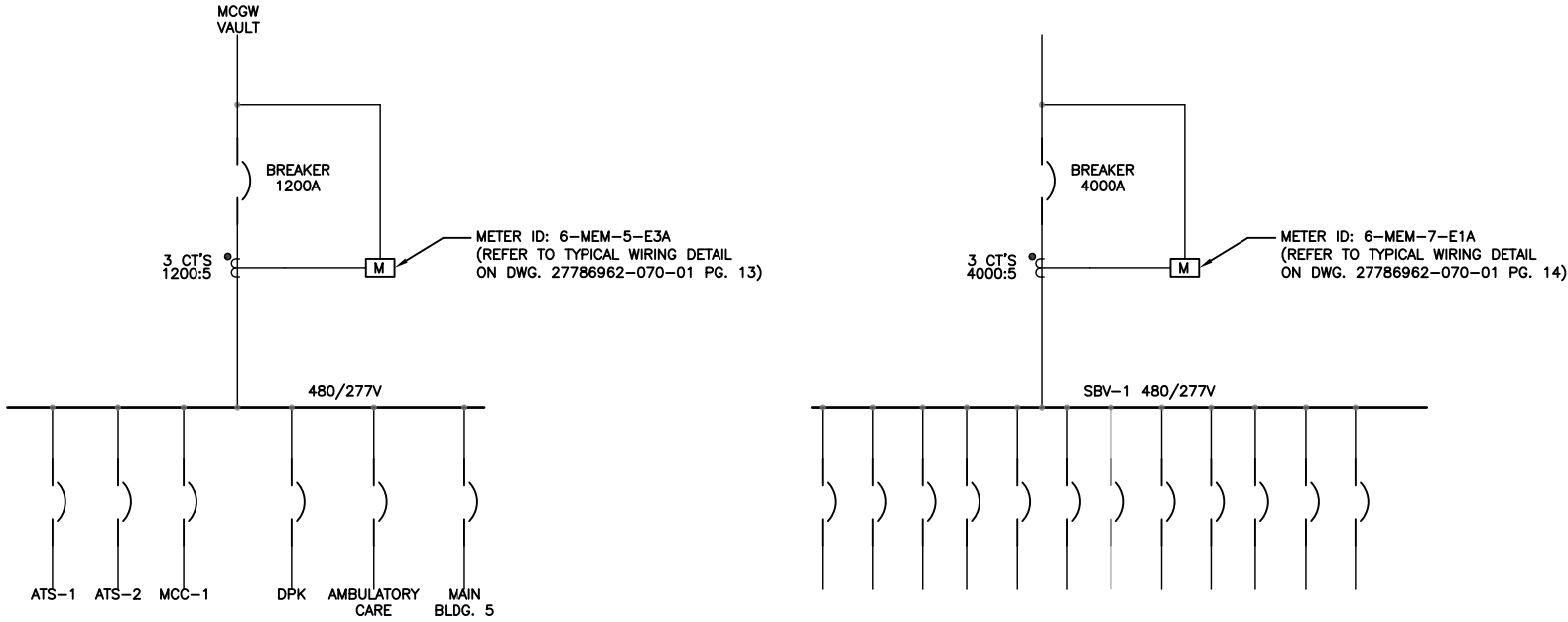
REV -

REV	DESCRIPTION	BY	DATE	—	----	—	—	—/—/—	—	----	—	—	—/—/—
—	----	—	—/—/—	—	----	—	—	—/—/—	—	----	—	—	—/—/—



BUILDING 1 PARTIAL ONE-LINE
MEMPHIS VA

BUILDING 1A PARTIAL ONE-LINE
MEMPHIS VA



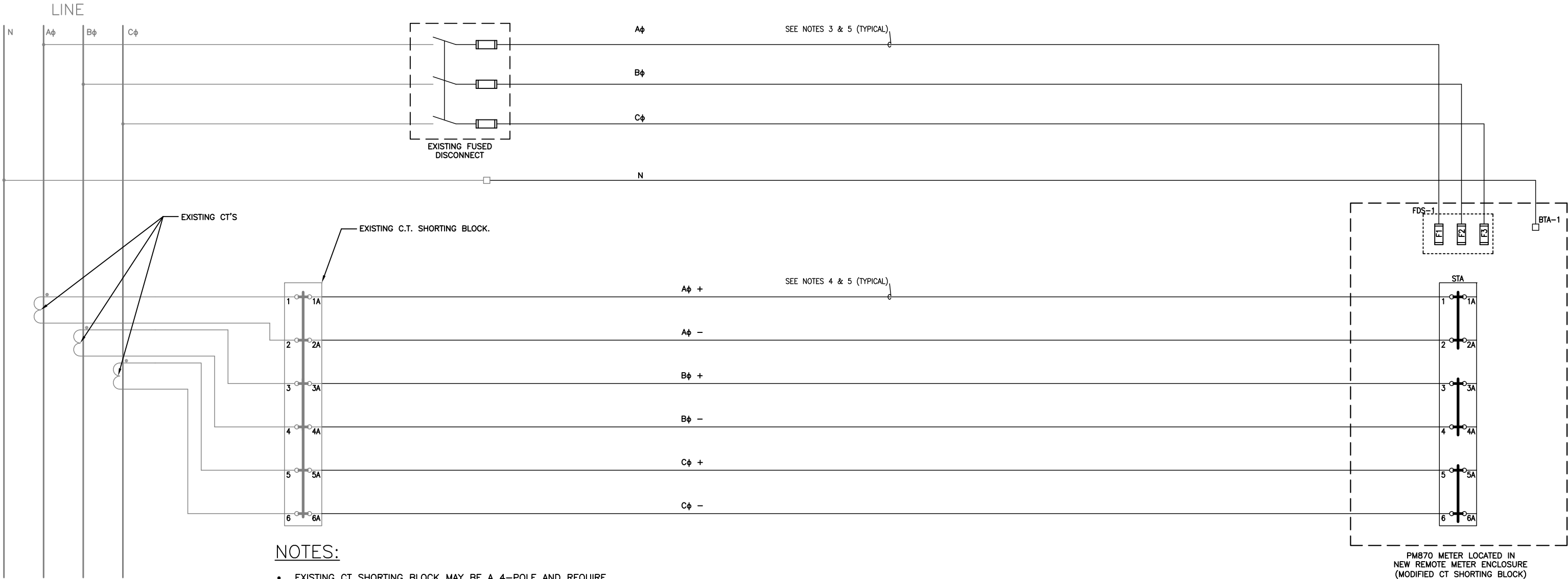
BUILDING 5 PARTIAL ONE-LINE
MEMPHIS VA

BUILDING 7 PARTIAL ONE-LINE
MEMPHIS VA

© SCHNEIDER ELECTRIC USA, INC.
THIS DRAWING AND/OR SPECIFICATIONS CONTAINS INFORMATION PROPRIETARY TO SCHNEIDER ELECTRIC, IT IS SUBMITTED IN CONFIDENCE AND IS TO BE USED SOLELY FOR THE PURPOSE FOR WHICH IT IS FURNISHED. SCHNEIDER ELECTRIC OWNS ALL COPYRIGHT, DESIGN AND INVENTION RIGHTS FOR THE DATA AND/OR MATERIAL DISCLOSED HEREIN. ALL DRAWINGS AND WRITTEN MATERIAL APPEARING HEREIN MAY NOT BE REPRODUCED, TRANSMITTED, DISCLOSED OR USED OTHERWISE IN WHOLE OR IN PART WITHOUT WRITTEN AUTHORIZATION OF SCHNEIDER ELECTRIC.

SCHNEIDER ELECTRIC USA, INC.		JOB NAME:	MEMPHIS VA	EQUIPMENT DESIGNATION: —			
		JOB LOCATION:	MEMPHIS, TN	EQUIPMENT TYPE: VISN 9			
		DRAWN BY:	BRANT DETTINGER	DRAWING TYPE: MEMPHIS VA PARTIAL ONE-LINE			
CHECKED BY:	ALAN WATSON	ENGR:	FAUSTO ZAMUDIO	<div>Schneider Electric</div>			
CHECKED DATE:	OCTOBER 28, 2010	DATE:	OCTOBER 28, 2010				
PLANT LOCATION:	P48 (ENG SVCS — PROJECTS)	DRAWING STATUS:	AS BUILT	DWG#	27786962—070—CM	PG 12 OF 15	REV —

REV	DESCRIPTION	BY	DATE	-	----	--	--/--/--	-	----	--	--/--/--
-	----	--	--/--/--	-	----	--	--/--/--	-	----	--	--/--/--



NOTES:

- EXISTING CT SHORTING BLOCK MAY BE A 4--POLE AND REQUIRE A SINGLE SHARED COMMON.
- EXISTING CT SHORTING BLOCK MAY BE A 6--POLE AND REQUIRE SEPERATE CT WIRE RUNS FOR EACH COMMON.
- NEW CT SHORTING BLOCK MAY BE SHOWN AS 4--POLE (6--POLE IS PREFERRED).

NOTES:

- REFERENCE DRAWING PACKAGE: 9761E0870R2C3B1C--SPL FOR DETAILS FOR METER ENCLOSURES: 9--MEM--1--E3A, 9--MEM--1--E3B, 9--MEM--1A--E3A, 9--MEM--1A--E3B.
- REFERENCE DRAWING PACKAGE: 27786962--070--01 PG. 15 FOR DETAILS FOR COMPONENT MOUNTING: 9--MEM--5--E3A.

NOTES:

- ELECTRICAL EQUIPMENT SHALL BE INSTALLED, OPERATED, SERVICED, AND MAINTAINED ONLY BY QUALIFIED PERSONNEL.
- ALL DETAILS LISTED HEREIN ARE FOR GENERAL REFERENCE ONLY AND SHALL BE USED ACCORDINGLY. EQUIPMENT SHALL BE INSTALLED IN ACCORDANCE WITH ALL LOCAL AND NEC CODES. REFER TO PROVIDED SQUARE D POWERLOGIC FACTORY ASSEMBLED ENCLOSURES INSTRUCTION BULLETIN 63230--020--59 A1 FOR ADDITIONAL DETAILS.
- ALL VOLTAGE CIRCUITS SHALL MEET OR EXCEED THE FOLLOWING SPECIFICATION. 14AWG STRANDED COPPER 90° C 600 VOLT MTW OR EQUIVALENT.
- ALL CURRENT CIRCUITS SHALL MEET OR EXCEED THE FOLLOWING SPECIFICATION. 12AWG STRANDED COPPER 90° C 600 VOLT MTW OR EQUIVALENT.
- TO INSURE MAXIMUM ACCURACY MONITORING EQUIPMENT SHALL BE INSTALLED AS CLOSE TO THE SOURCE AS POSSIBLE. VOLTAGE AND CURRENT CIRCUITS SHALL NOT EXCEED ONE HUNDRED FEET IN DISTANCE.

NEW ELECTRICAL METER INSTALLATION

TYPICAL FOR METERS: 9--MEM--5--E3A, 9--MEM--1A--E3A, 9--MEM--1A--E3B, 9--MEM--1--E3A, 9--MEM--1--E3B

© SCHNEIDER ELECTRIC USA, INC. THIS DRAWING AND/OR SPECIFICATIONS CONTAINS INFORMATION PROPRIETARY TO SCHNEIDER ELECTRIC, IT IS SUBMITTED IN CONFIDENCE AND IS TO BE USED SOLELY FOR THE PURPOSE FOR WHICH IT IS FURNISHED. SCHNEIDER ELECTRIC OWNS ALL COPYRIGHT, DESIGN AND INVENTION RIGHTS FOR THE DATA AND/OR MATERIAL DISCLOSED HEREIN. ALL DRAWINGS AND WRITTEN MATERIAL APPEARING HEREIN MAY NOT BE REPRODUCED, TRANSMITTED, DISCLOSED OR USED OTHERWISE IN WHOLE OR IN PART WITHOUT WRITTEN AUTHORIZATION OF SCHNEIDER ELECTRIC.	SCHNEIDER ELECTRIC USA, INC.		JOB NAME:	MEMPHIS VA	EQUIPMENT DESIGNATION:			-				
			JOB LOCATION:	MEMPHIS, TN	EQUIPMENT TYPE:			VISN 9				
			DRAWN BY:	BRANT DETTINGER	DRAWING TYPE:			MEMPHIS VA WIRING SCHEMATIC				
	CHECKED BY:	ALAN WATSON		ENGR:	FAUSTO ZAMUDIO		<div>Schneider Electric</div>					
	CHECKED DATE:	OCTOBER 28, 2010		DATE:	OCTOBER 28, 2010							
	PLANT LOCATION:	P48 (ENG SVCS – PROJECTS)		DRAWING STATUS:	AS BUILT		DWG#	27786962-070-01		PG 13	OF 15	REV -

