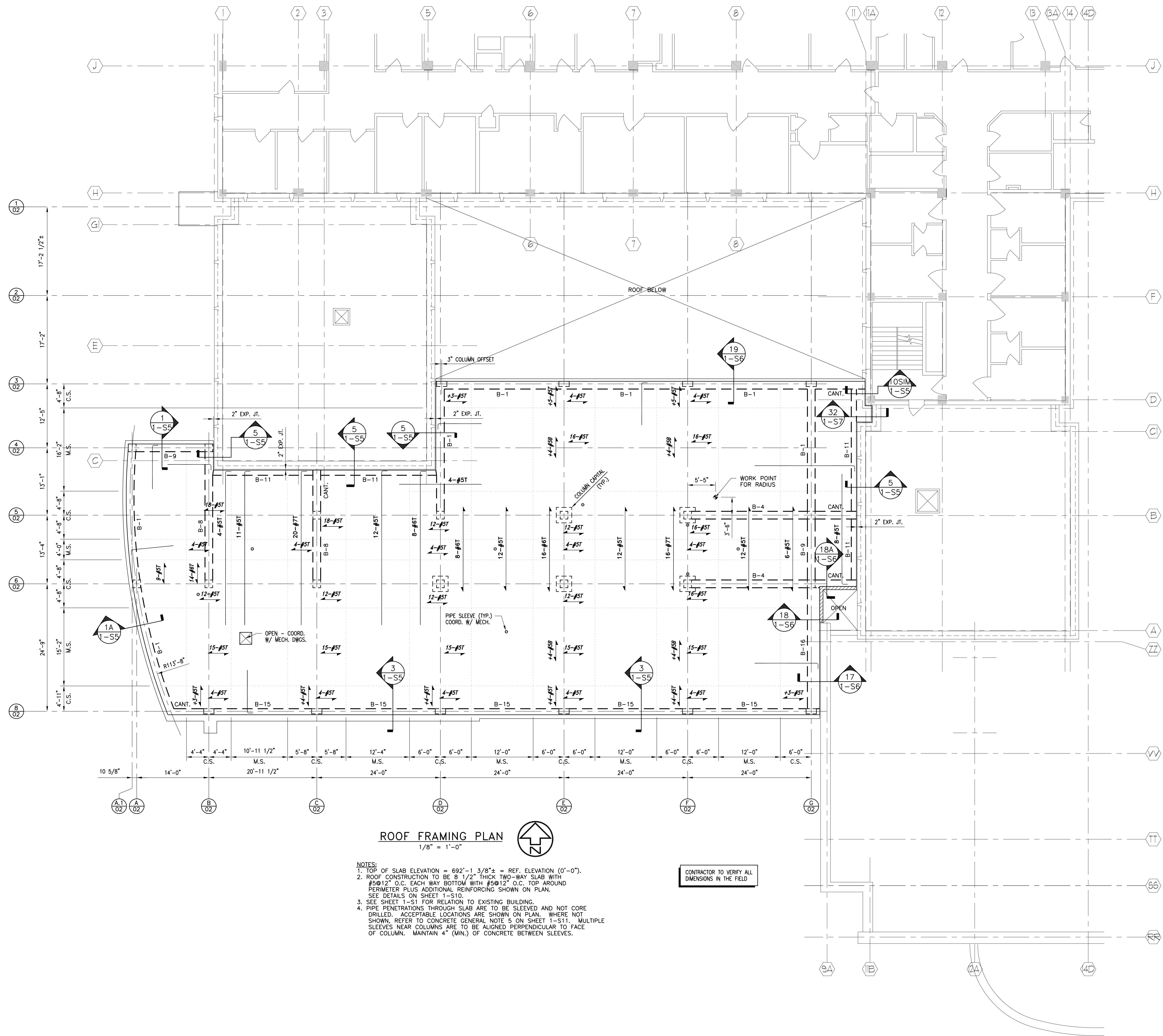


one-eighth inch = one foot
one-quarter inch = one foot
three-eighths inch = one foot
one-half inch = one foot
three-quarters inch = one foot
one inch = one foot
one and one-half inches = one foot
two inches = one foot
three inches = one foot



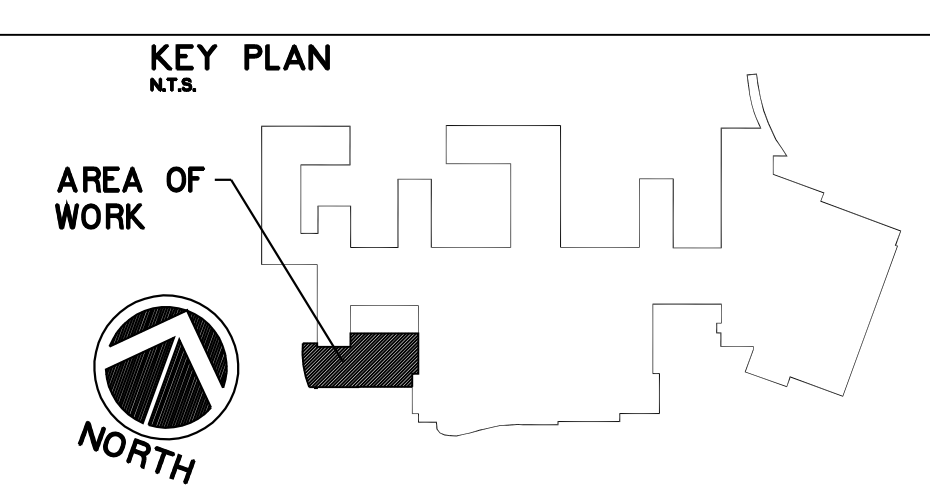
ROOF FRAMING PLAN
1/8" = 1'-0"

- NOTES:
1. TOP OF SLAB ELEVATION = 892'-1 3/8" ± = REF. ELEVATION (0'-0").
 2. ROOF CONSTRUCTION TO BE 8 1/2" THICK TWO-WAY SLAB WITH #5@12" O.C. EACH WAY BOTTOM WITH #5@12" O.C. TOP AROUND PERIMETER PLUS ADDITIONAL REINFORCING SHOWN ON PLAN. SEE DETAILS ON SHEET 1-S10.
 3. SEE SHEET 1-S1 FOR RELATION TO EXISTING BUILDING.
 4. PIPE PENETRATIONS THROUGH SLAB ARE TO BE SLEEVED AND NOT CORE DRILLED. ACCEPTABLE LOCATIONS ARE SHOWN ON PLAN. WHERE NOT SHOWN, REFER TO CONCRETE GENERAL NOTE 5 ON SHEET 1-S11. MULTIPLE SLEEVES NEAR COLUMNS ARE TO BE ALIGNED PERPENDICULAR TO FACE OF COLUMN. MAINTAIN 4" (MIN.) OF CONCRETE BETWEEN SLEEVES.

CONTRACTOR TO VERIFY ALL DIMENSIONS IN THE FIELD

Record Drawings
THESE DRAWINGS REFLECT A RECORD OF CHANGES FROM THE ORIGINAL CONTRACT DOCUMENTS THAT OCCURRED DURING CONSTRUCTION BASED ON INFORMATION SUPPLIED BY THE CONTRACTORS
Date 4-5-2006

ARCH. JOB NO: 14826.00



Drawing Title ROOF FRAMING PLAN	Project Title VAMC - WADE PARK - CLEVELAND CONSOLIDATE CRITICAL CARE ADDITIONS/RENOVATIONS	Project No. 541-306	Office of Facilities Management Department of Veterans Affairs
Approved: Division Chief	Location 10701 EAST BLVD. CLEVELAND, OH.	Building Number 1	
Approved: Service Director	Date AUGUST 6, 2003	Drawing No. 1-S4	
Checked LLP	Drawn PJT	Dwg. DF	

**SPICE
COSTANTINO**
ARCHITECTS
7550 LUCERNE DRIVE
CLEVELAND, OHIO 44130
FAX: 440-243-3305
TEL: 440-243-2000