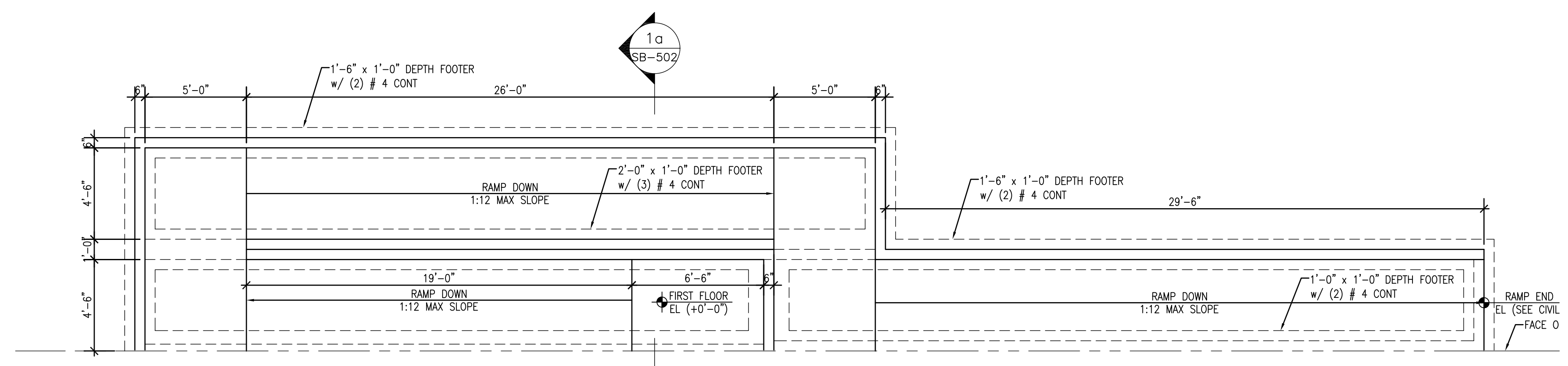
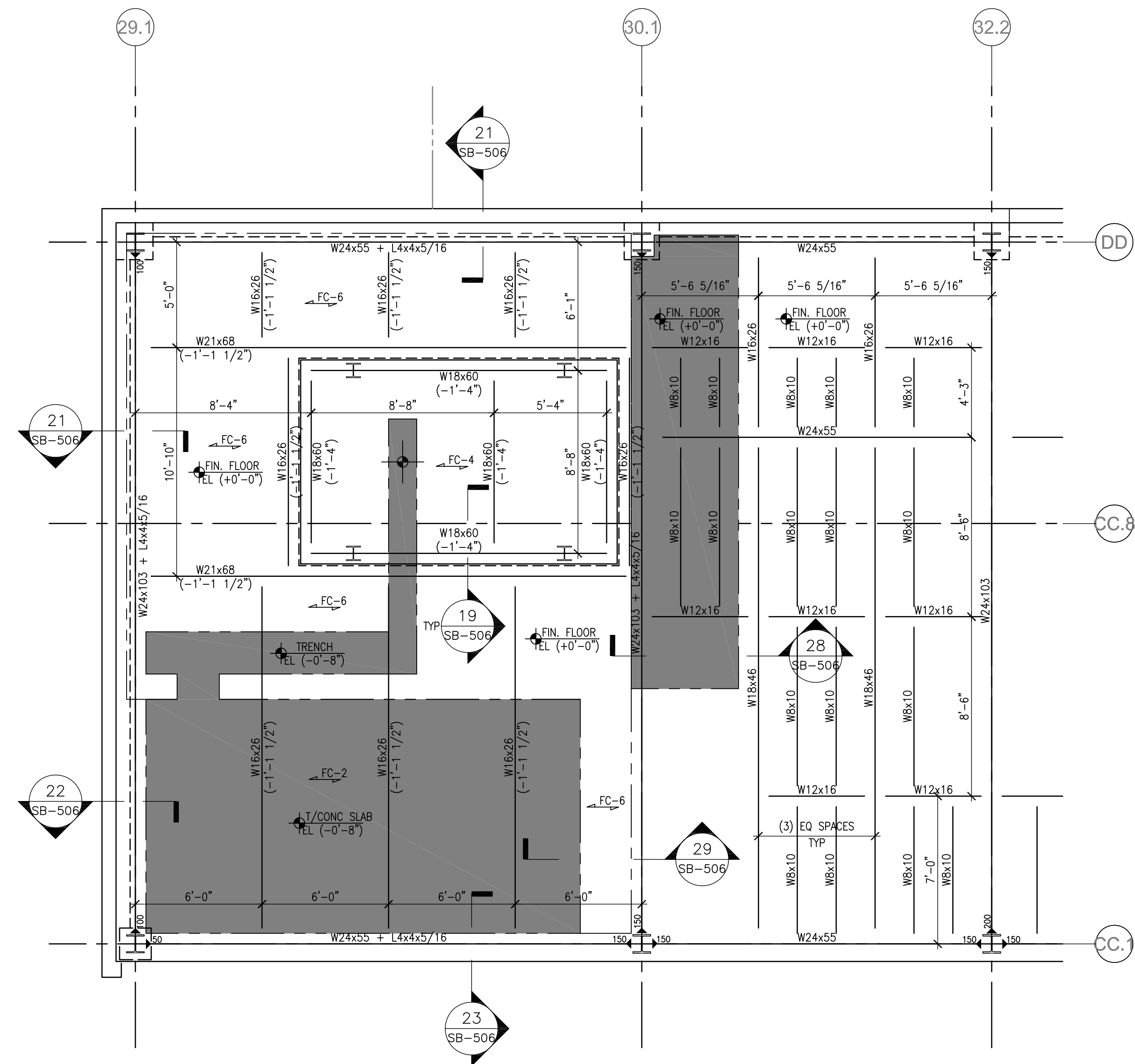


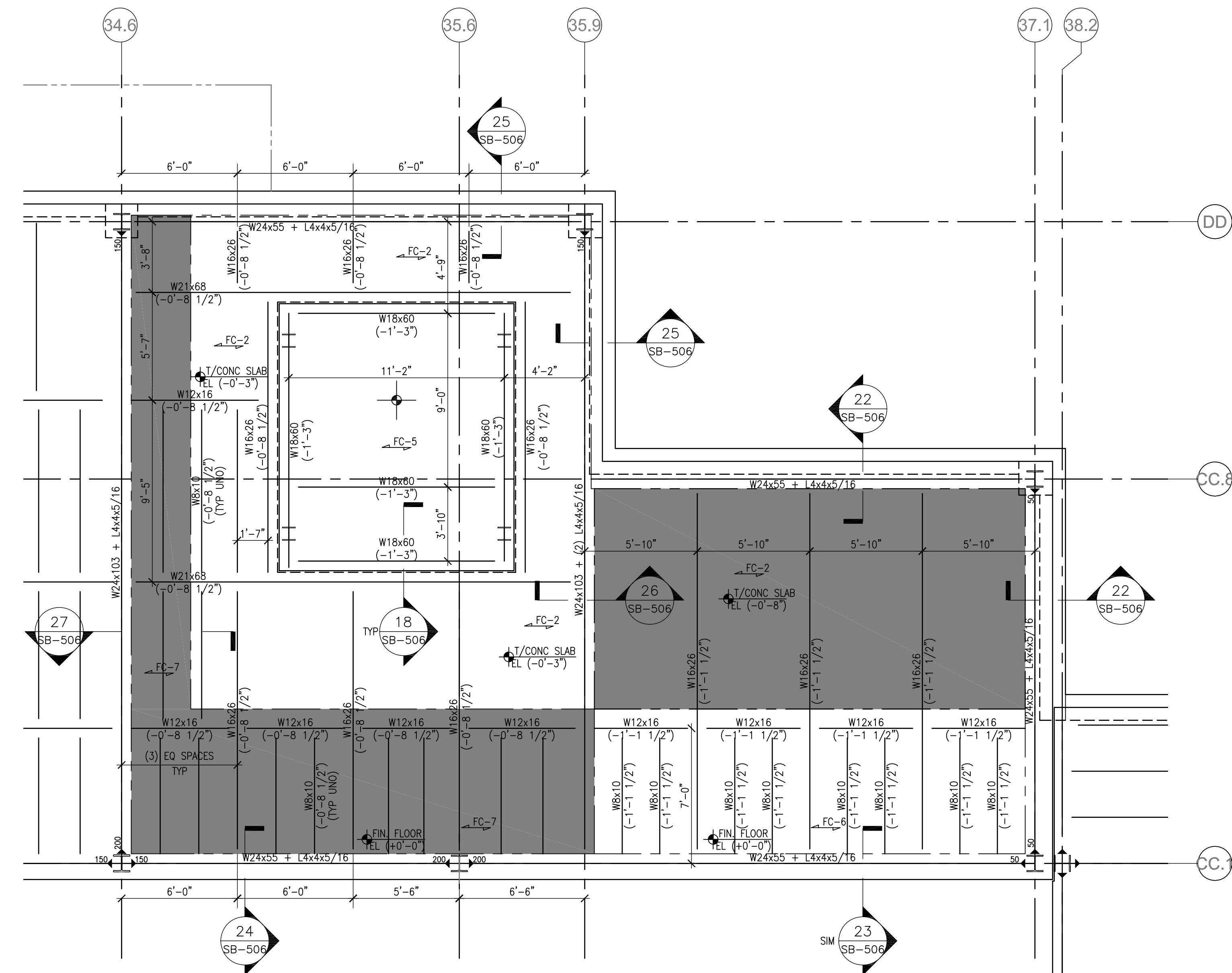
three inches = one foot  
one and one half inches = one foot  
one inch = one foot  
three quarters inch = one foot  
one half inch = one foot  
three eighths inch = one foot  
one quarter inch = one foot  
one eighth inch = one foot



B1 EXTERIOR RAMP PLAN  
SCALE: 1/4" = 1'-0"



F1 PARTICLE FIRST FLOOR FRAMING PLAN  
SCALE: 1/4" = 1'-0"



F5 PARTICLE FIRST FLOOR FRAMING PLAN  
SCALE: 1/4" = 1'-0"

NOTES:

1. BASE REFERENCE ELEVATION IS FROM FINISH FIRST FLOOR EL. 667.00' = (+0'-0")
2. ALL ELEVATIONS ARE REFERENCED FROM BASE ELEVATION AND ARE SHOWN THUS (+X'-X") OR (-X'-X")
3. TOP OF STEEL = EL. = (-0'-5 1/2") UNLESS NOTED OTHERWISE
4. SEE S-001 AND S-002 FOR GENERAL NOTES.
5. SEE ARCHITECTURAL DWGS FOR LAYOUT DIMENSIONS NOT SHOWN ON THIS DRAWING. WHERE DISCREPANCIES OCCUR, VERIFY WITH ARCHITECT THE CORRECT DIMENSION.
6. FOOTING ELEVATIONS SHOWN ON PLAN ARE TO TOP OF FOOTING FROM BASE REFERENCE ELEVATION.
7. SEE ARCHITECTURAL AND MRI DRAWINGS TO COORDINATE FINAL LAYOUT OF FLOOR CONSTRUCTION (FC-X) TRANSITIONS AND SLAB EDGES.
8. SEE ARCHITECTURAL AND MRI DRAWINGS FOR MRI FLOOR TRENCH LAYOUT AND DIMENSIONS.

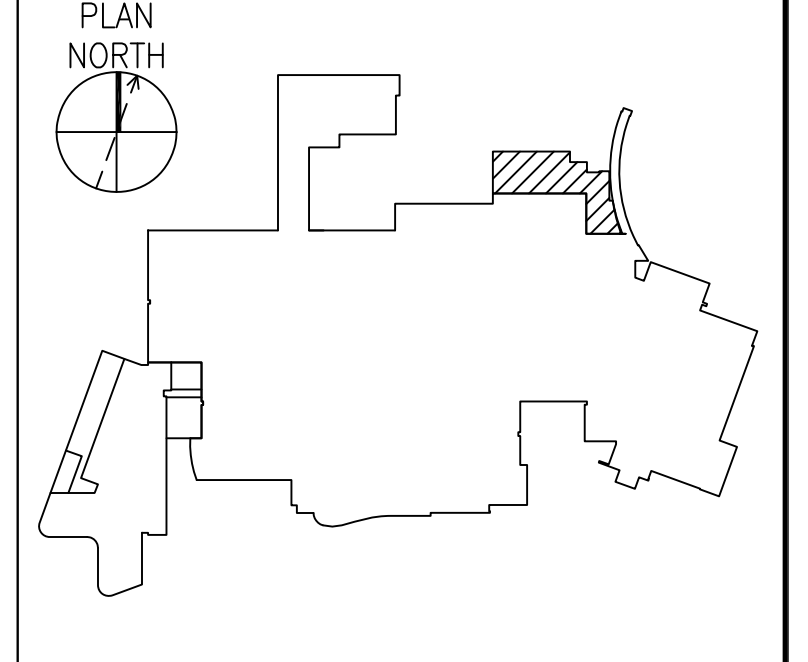
FLOOR CONSTN NOTES:

- FC-1 INDICATES 5" CONCRETE SLAB ON GRADE WITH 6x6-W2.9XW2.9 WWF (TYPICAL UNLESS NOTED OTHERWISE)
- FC-2 3 1/2" LIGHTWEIGHT CONCRETE WITH 6x6-W2.1XW2.1 WWF OVER 2" X 20 GAGE GALV COMPOSITE DECK (5 1/2" OVERALL)
- FC-4 12" NORMAL WEIGHT CONCRETE MRI SLAB WITH FIBERGLASS FLEXURAL REINFORCING BAR EA. WAY TOP AND BOTTOM WITH 4" LIGHTWEIGHT TOPPING SLAB W/ FIBERGLASS TEMPERATURE REINFORCING BAR EA. WAY (1'-4" OVERALL)
- FC-5 12" NORMAL WEIGHT CONCRETE MRI SLAB WITH FIBERGLASS REINFORCING BAR EA. WAY TOP AND BOTTOM (1'-0" OVERALL)
- FC-6 3 1/2" LIGHTWEIGHT CONCRETE WITH 6x6-W2.1XW2.1 WWF OVER 2"x20 GAGE GALV COMPOSITE DECK WITH 4" 100 PSI FOAM LAYER AND 4" LIGHTWEIGHT TOPPING SLAB WITH 6x6-W1.4XW1.4 WWF (1'-1 1/2" OVERALL)
- FC-7 3 1/2" LIGHTWEIGHT CONCRETE WITH 6x6-W2.1XW2.1 WWF OVER 2"x20 GAGE GALV COMPOSITE DECK WITH 3" LIGHTWEIGHT TOPPING SLAB WITH 6x6-W1.4XW1.4 WWF (0'-8 1/2" OVERALL)



LEGEND:

- NEW STRUCTURAL CONCRETE WALL
- NEW STRUCTURAL CMU WALL
- FLOOR CONSTRUCTION TYPE, SEE FLOOR CONSTRUCTION NOTES ABOVE FOR DETAILS
- NEW STEEL BEAM WITH MOMENT CONNECTION. CONNECTION TO DEVELOP VALUE 'XXX' IN KIP-FT. SEE TYP MOMENT CONNECTIONS SHEET SB-504.

KEY PLAN



FOR CONSTRUCTION  
FULLY SPRINKLERED

		<b>CONSULTANTS:</b>		<b>ARCHITECT / ENGINEERS:</b>	<div>Westlake Reed Leskosky</div> <div>925 Euclid Avenue, Suite 1900, Cleveland, Ohio 44115 216.522.1350 Phoenix, Washington, Cleveland</div>	Drawing Title	Project Title	Project Number	<b>Office of Facilities Management</b>
						<b>ENLARGED FIRST FLOOR FRAMING PLANS</b>	<b>Cleveland/Brecksville Consolidation Radiology Renovation</b>	<b>541-317</b>	
						Approved: Project Director	Location	Building Number	
							<b>Cleveland, Ohio</b>	<b>1</b>	
						Date	Checked	Drawn	
						July 8, 2008			
<b>Revisions:</b>	<b>Date</b>						<b>SB-421</b>	Drawing Number	 Department of Veterans Affairs
								Dwg. of	