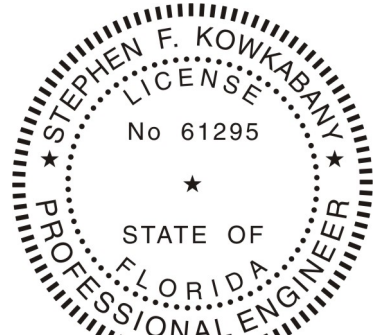


NEPTUNE
FIRE PROTECTION ENGINEERING LLC
EOR: Stephen F. Kowkabany FI License #61295
Certificate of Authorization #: 26520
60 Ocean Boulevard, Ste 15
Atlantic Beach, FL 32233
904 652 4200 PHONE



FL. REG. M
AR0009098

AKEA Design, Inc.
3603 NW 98th Street, Suite B
Gainesville, FL 32606
Phone: (352) 474-6124
Fax: (352) 474-6324
COA: FL #29578
AKEA Project No. 110-15

LIFE SAFETY PLAN

RENOVATE 3AB FOR
GASTROENTEROLOGY AND
PULMONARY

Date
JULY 15, 2016

SFI

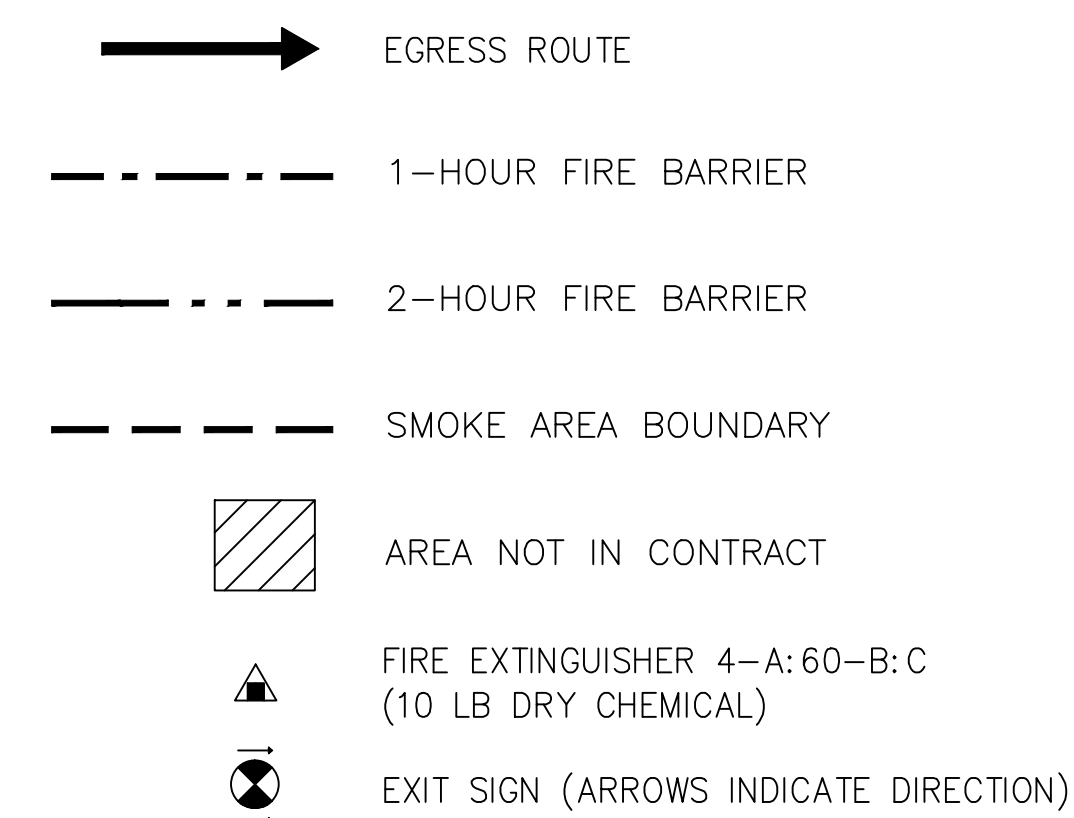
BA

Building Number
1

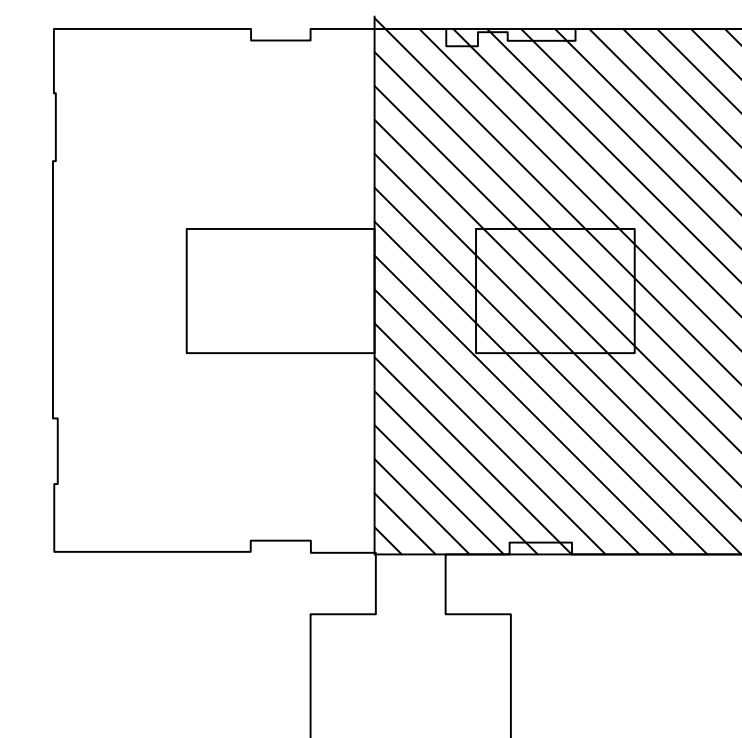
72 OF 72

 Department of
Veterans Affairs

Egress/Exiting	Required	Actual	Code	Section/Table
Stairway Width (inches)	44	53	IBC	1009.4
Corridor Width (inches)	96	96 Minimum	IBC	1018.2
Door Width (inches)	32	36	IBC	1008.1.1
Emergency Lighting	Yes	Provided	IBC	1006.1
I-2 Exit Access Travel Distance (feet)	200	192	IBC	Table 1016.2
Dead Ends (feet)	20	NA	IBC	1018.4(2)
I-2 Common Path of Travel (feet)	75	54	IBC	1014.3



LEGEND



KEY PLAN

FINAL DESIGN
APPROVED FOR CONSTRUCTION