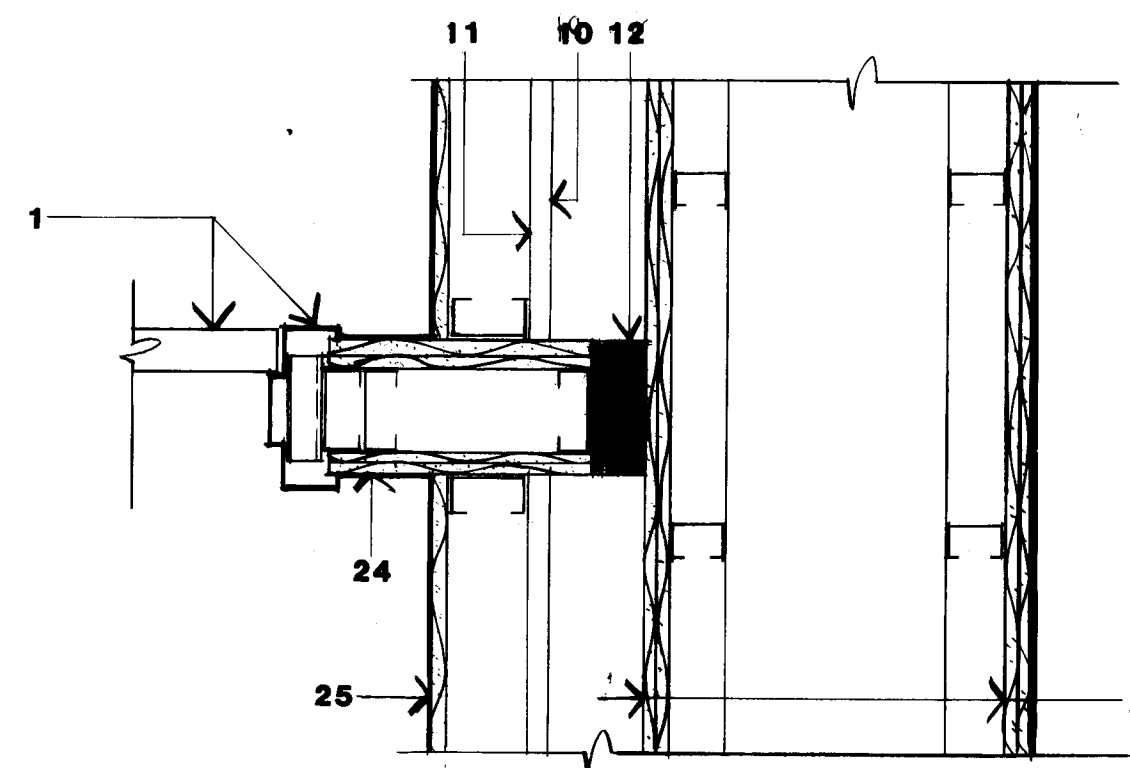


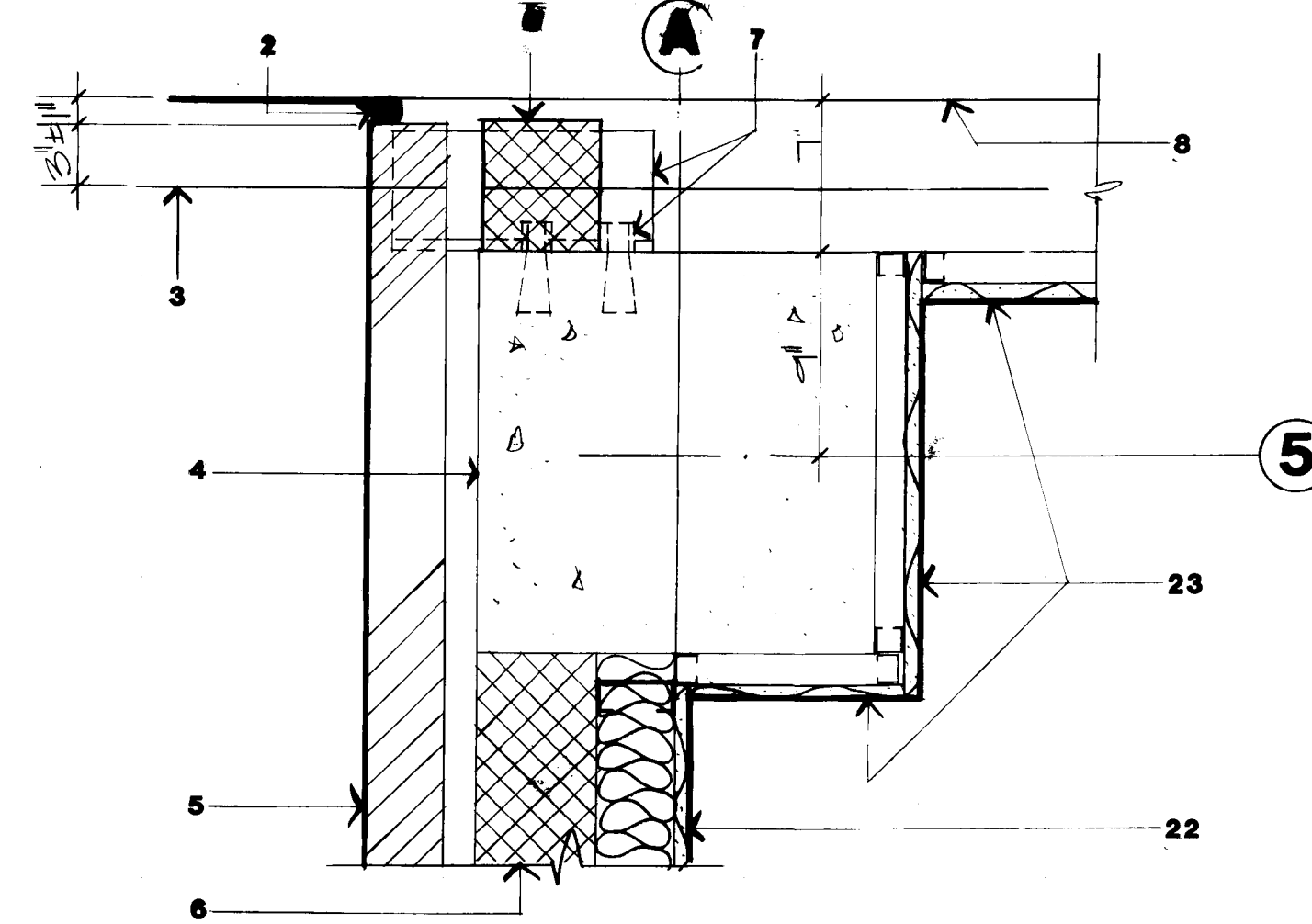
NOTE: FOR ALL ACCESSORIES, VERIFY MEAS. SET MOUNTING HEIGHT W/ ARCHITECT.

C ENLARGED TOILET PLAN
1/4"=1'-0"

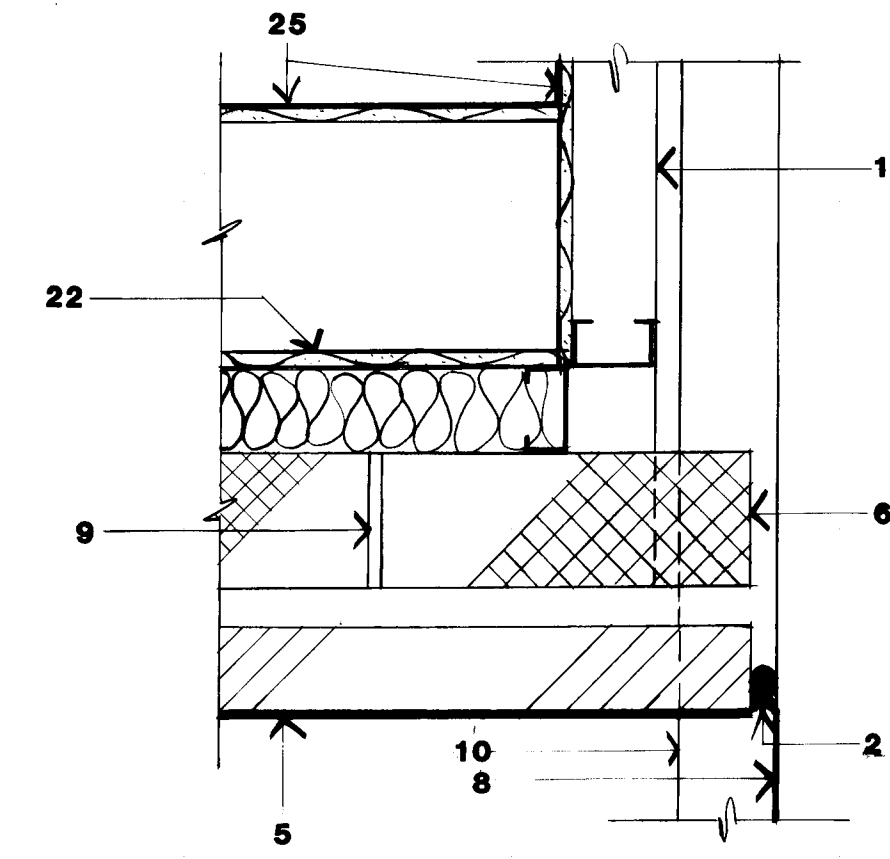
- KEY NOTES**
- Hollow met. door and jamb.
 - Silicone bldg. sealant equal to Dow Corning #790, w/ backer rod.
 - Face of spandrel below.
 - New concrete column.
 - New brick veneer.
 - 6" CMU.
 - 6"x6"x3/8"x1'-0" steel angle w/ (4) 1/2" round expansion bolts.
 - Face of exist. brick veneer.
 - CMU joint.
 - Exist. precast spandrel below.
 - Edge of new 2nd floor conc. slab. Fill opening w/ firestop.
 - Firestop.
 - Paper towel dispenser/disposal.
 - Soap dispenser.
 - Mirror @ each lavatory.
 - Dual roll toilet paper dispenser.
 - 4'-0" grab bars each side.
 - Overhead-braced toilet partition.
 - Paint wall to match ext'g after installing closures of Part. Type H in ext'g windows.
 - Fill with sound batts.
 - Floor exp. joints equal to RUC-10 by Metalines Inc.
 - Partition Type A.
 - Partition Type B.
 - Partition Type C to be anchored south of exp. jt. only.
 - Partition Type G.
 - Partition Type H.
 - Burgundy accent tiles inside "Feature Strip," typical.
 - 1" "Feature Strip" as manufactured by Azrock, typ. or equal.
 - Field color tile.
 - Mitered corners.
 - Inlay tile pattern in accent color bordered by "Feature Strip."
 - Fill opening between new 2nd floor slab and new roof slab and existing building.
 - Provide 2-hour firestop around all ductwork @ 2nd floor level.



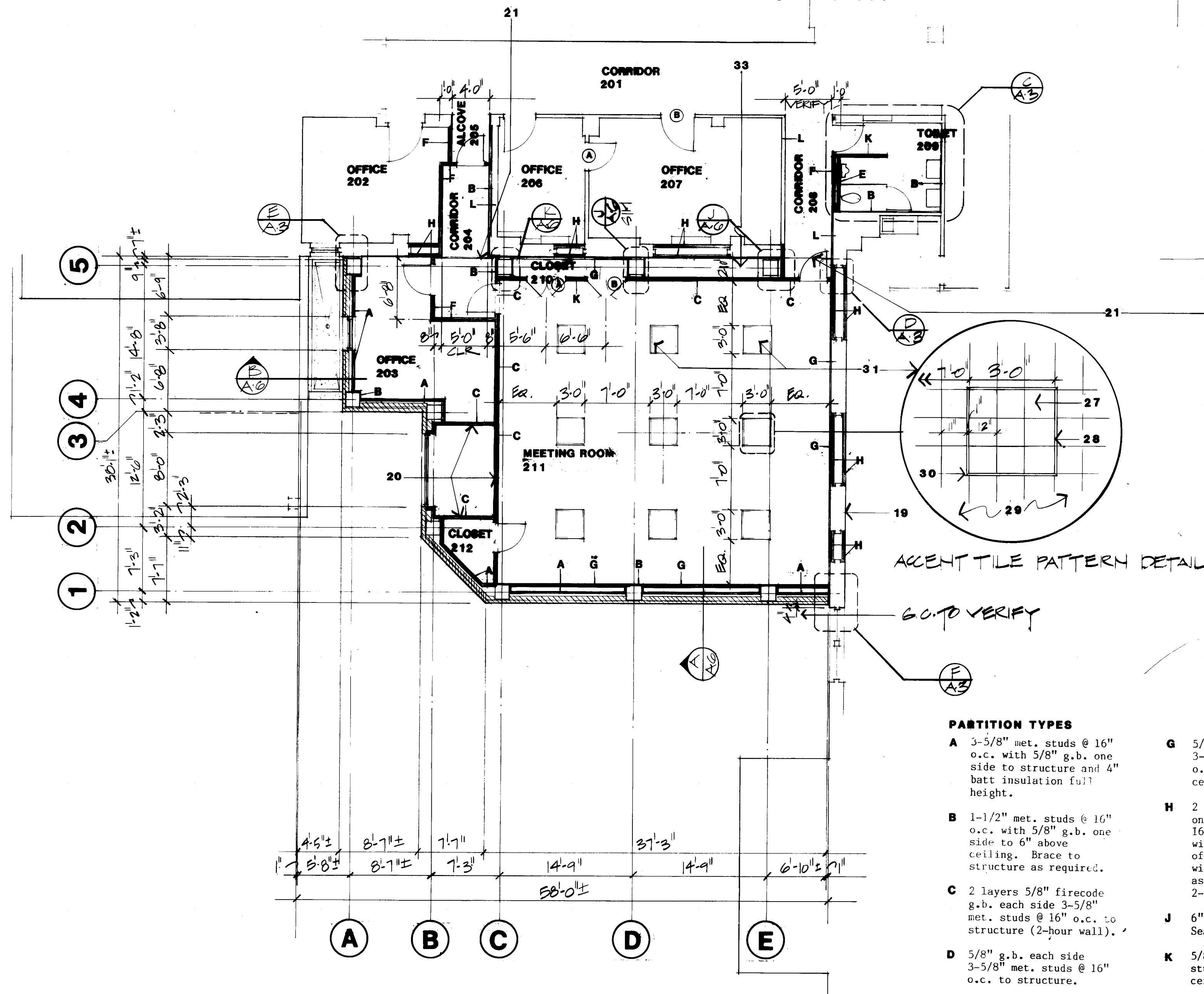
D JAMB DETAIL AT DOOR #208
1-1/2"=1'-0"



E SECOND FLOOR COL. PLAN
1-1/2"=1'-0"



F BLDG. INTERFACE PLAN AT 2nd FLOOR
1-1/2"=1'-0"



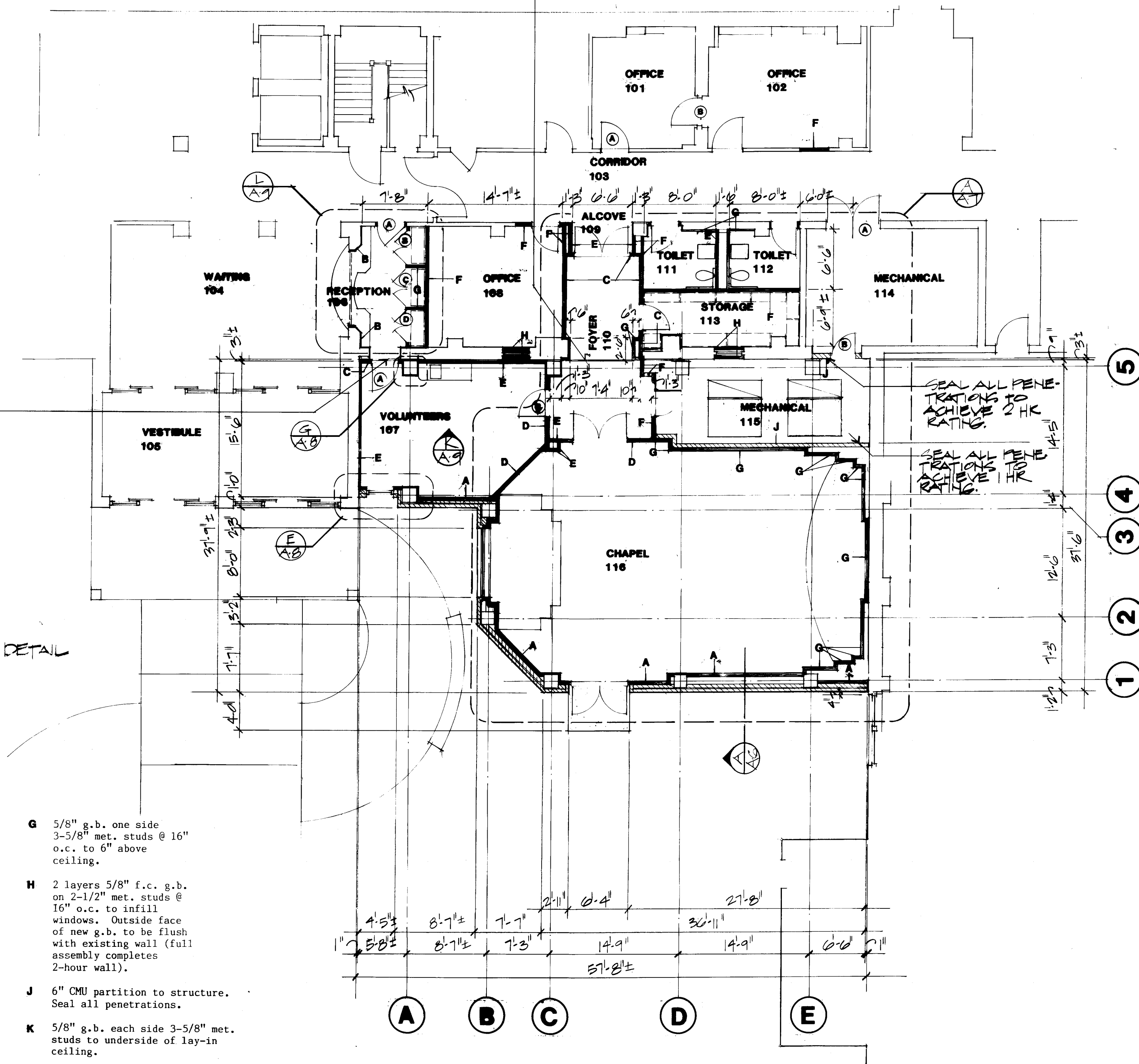
B SECOND FLOOR PLAN
1/8"=1'-0"

ACCENT TILE PATTERN DETAIL

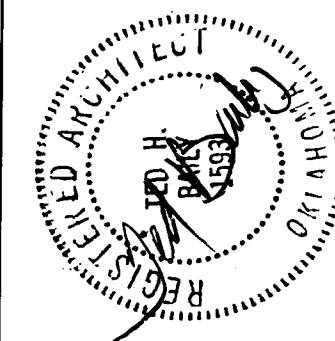
GO TO VERIFY

PARTITION TYPES

- 3-5/8" met. studs @ 16" o.c. with 5/8" g.b. one side to structure and 4" batt insulation full height.
- 1-1/2" met. studs @ 16" o.c. with 5/8" g.b. one side to 6" above ceiling. Brace to structure as required.
- 2 layers 5/8" firecode g.b. each side 3-5/8" met. studs @ 16" o.c. to structure (2-hour wall).
- 5/8" g.b. each side 3-5/8" met. studs @ 16" o.c. to structure.
- 5/8" g.b. one side 3-5/8" met. studs @ 16" o.c. to structure.
- 5/8" f.c. g.b. each side 3-5/8" met. studs @ 16" o.c. to structure (1-hour wall).
- 5/8" g.b. one side 3-5/8" met. studs @ 16" o.c. to 6" above ceiling.
- 2 layers 5/8" f.c. g.b. on 2-1/2" met. studs @ 16" o.c. to infill of windows. Outside face of new g.b. to be flush with existing wall (full assembly completes 2-hour wall).
- 6" CMU partition to structure. Seal all penetrations.
- 5/8" g.b. each side 3-5/8" met. studs to underside of lay-in ceiling.
- Extend existing partition to structure with partition Type F (1-hour wall).



A FIRST FLOOR PLAN
1/8"=1'-0"



Fritz/Baily
Architecture Planning Design
2431 East 61st Street Suite 200
Tulsa, Oklahoma 74136
(918) 742-2555

Project
CHAPEL ADDITION
VETERANS ADMINISTRATION MEDICAL CENTER
MUSKOGEE, OKLAHOMA
PROJECT NO. 88-105

Issue	Date

Checked
by

Drawn
by

Date
12/9/86

Sheet No.
A-3

Sheet Title
FLOOR PLANS