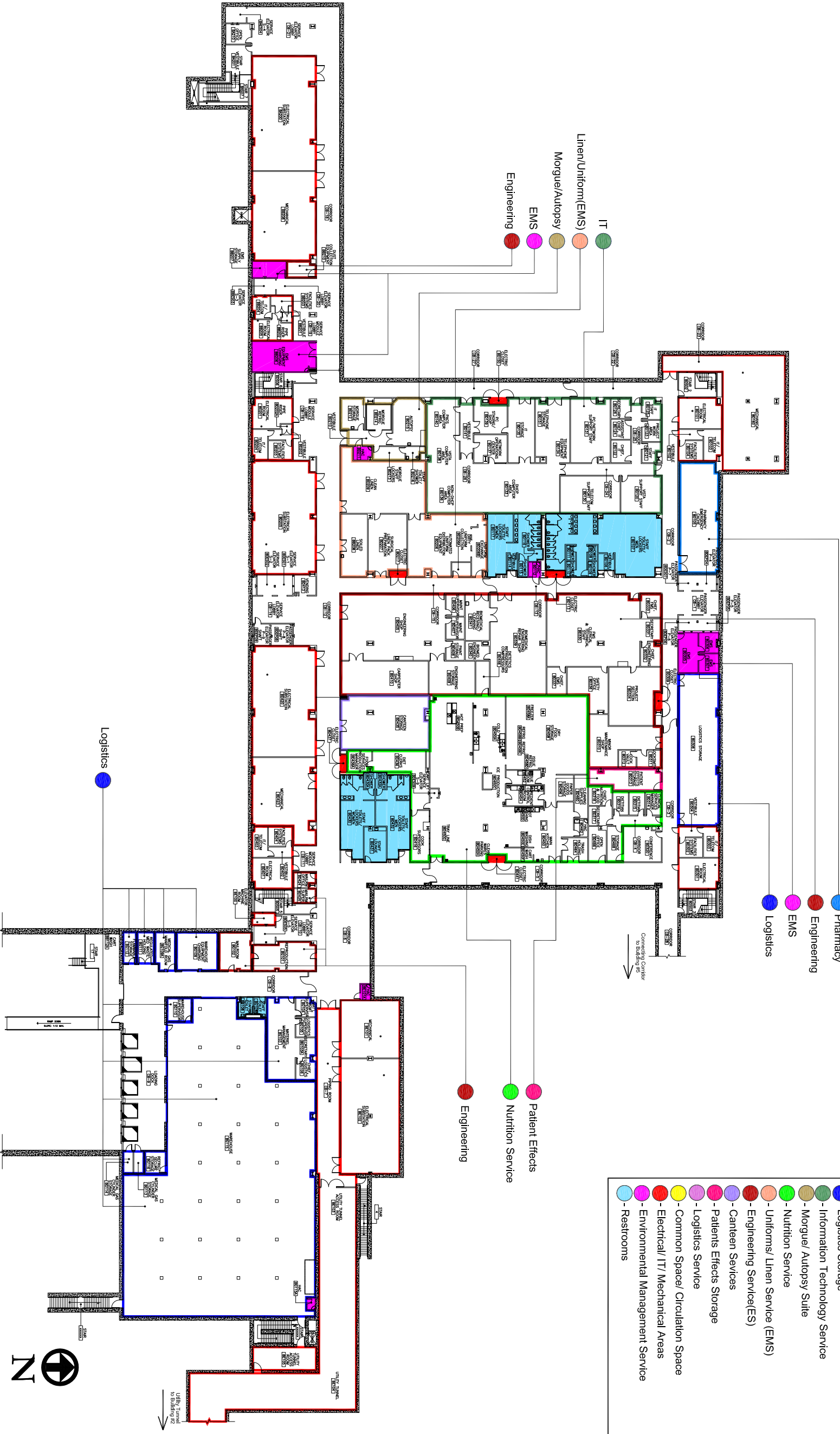


VA Southern Nevada Healthcare System



Building 1 - Basement Floor Plan

GRAPHIC SCALE = FEET

21 July 2014

VA Southern Nevada Healthcare System

- Service Department
- Pulmonary Clinic
 - Oncology/Hematology/Infusion
 - Infectious Diseases Clinic
 - Eye Clinic
 - Rehabilitation Medicine
 - Prosthetics Clinic
 - Radiology
 - Pharmacy
 - Emergency Department
 - Canteen Service
 - Mental Health Clinic
 - VA Police
 - Blood Draw Lab
 - Auditorium

- Auditorium
- Social Work
- Nursing Transfer

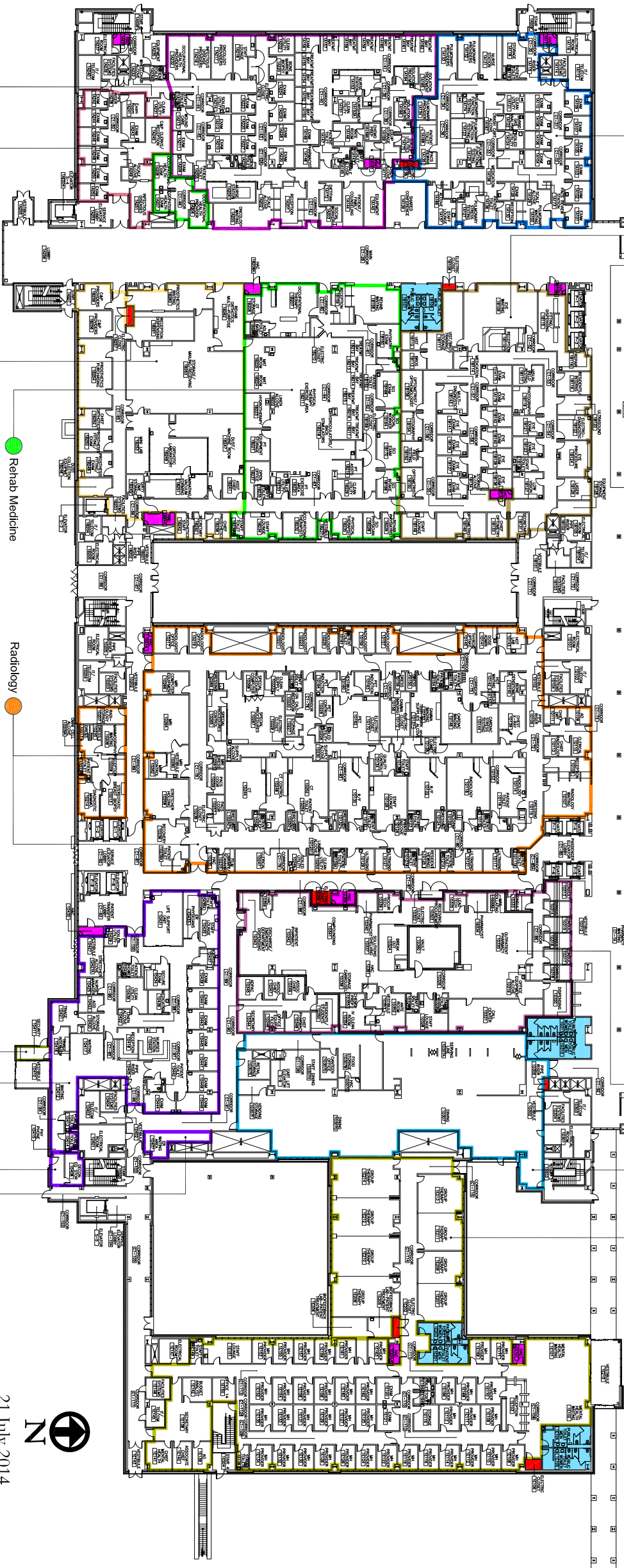
- Education
- Voluntary Service
- Veteran Service
- Veterans Benefits
- VA Police

- Service Department
- Veterans Benefits Administration
 - Health Administration Service
 - Voluntary Service
 - Veterans Service Offices
 - Patient Advocate
 - Common Space/ Circulation Space
 - Electrical/ IT/ Mechanical Areas
 - Environmental Management Service
 - Restrooms
 - Social Work Services
 - Education, Conference Room
 - Nursing Transfer Office

- Conference Room
- Health Administration
- Blood Draw Lab
- Eye Clinic
- Pulmonary Clinic

- Pharmacy
- Canteen
- Mental Health

- Rehab Medicine
- Prosthetics
- Infectious Disease
- Onco

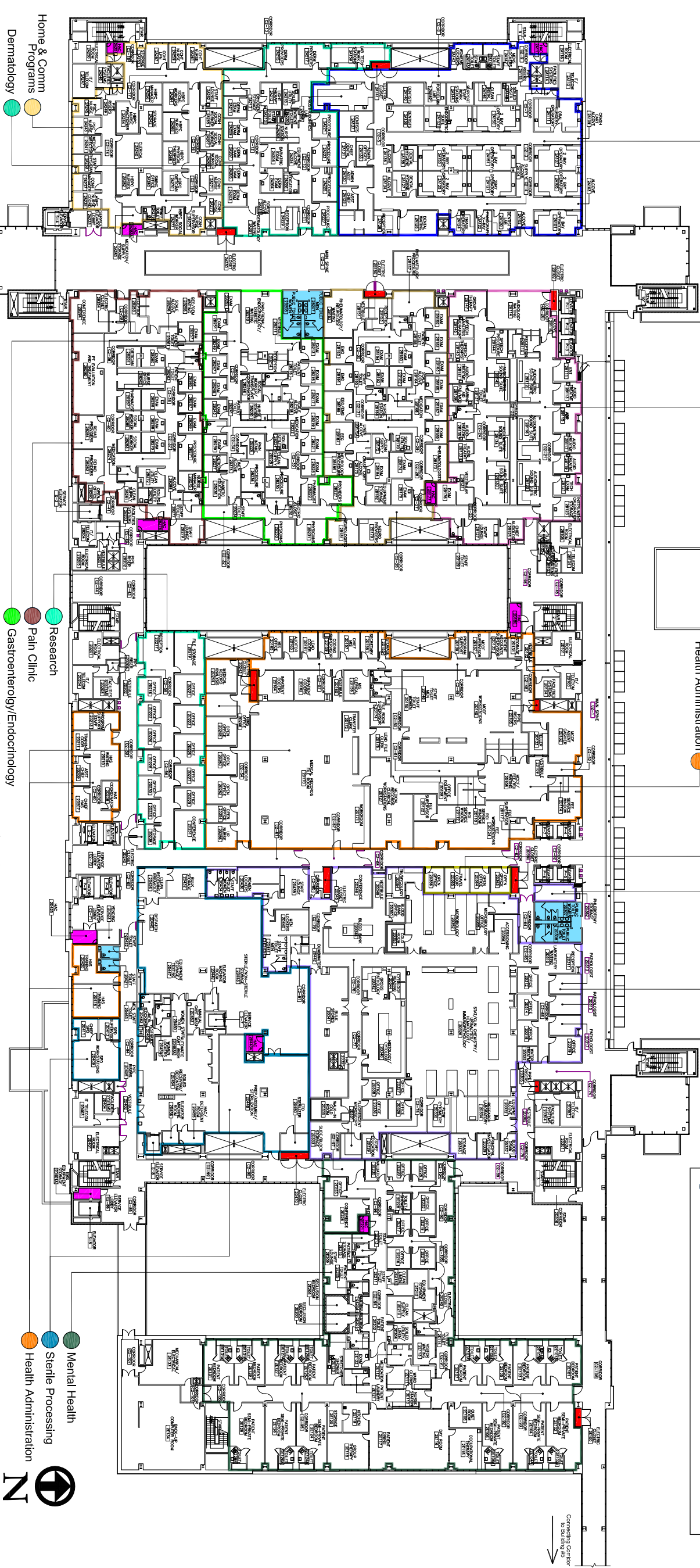
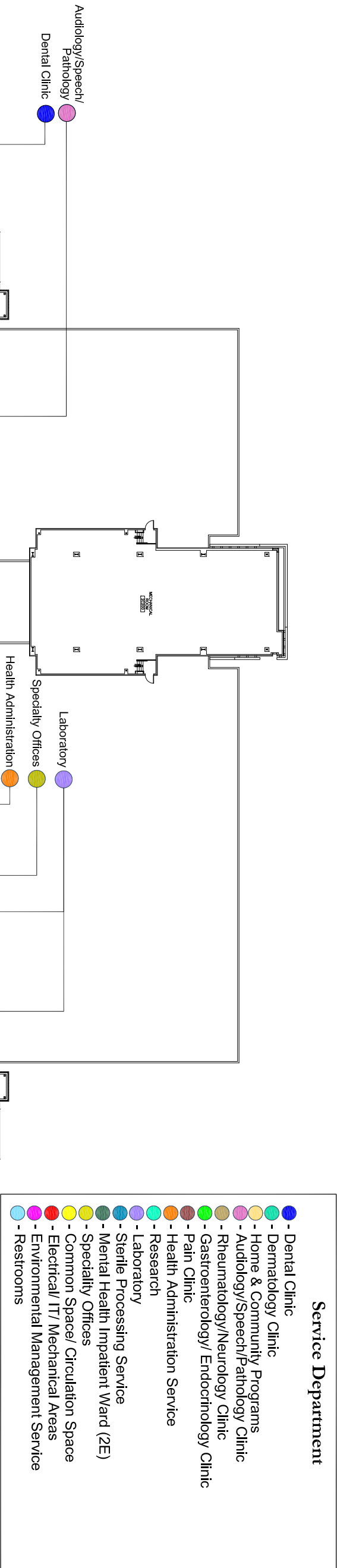


21 July 2014

Building 1 - 1st Floor

GRAPHIC SCALE - FEET

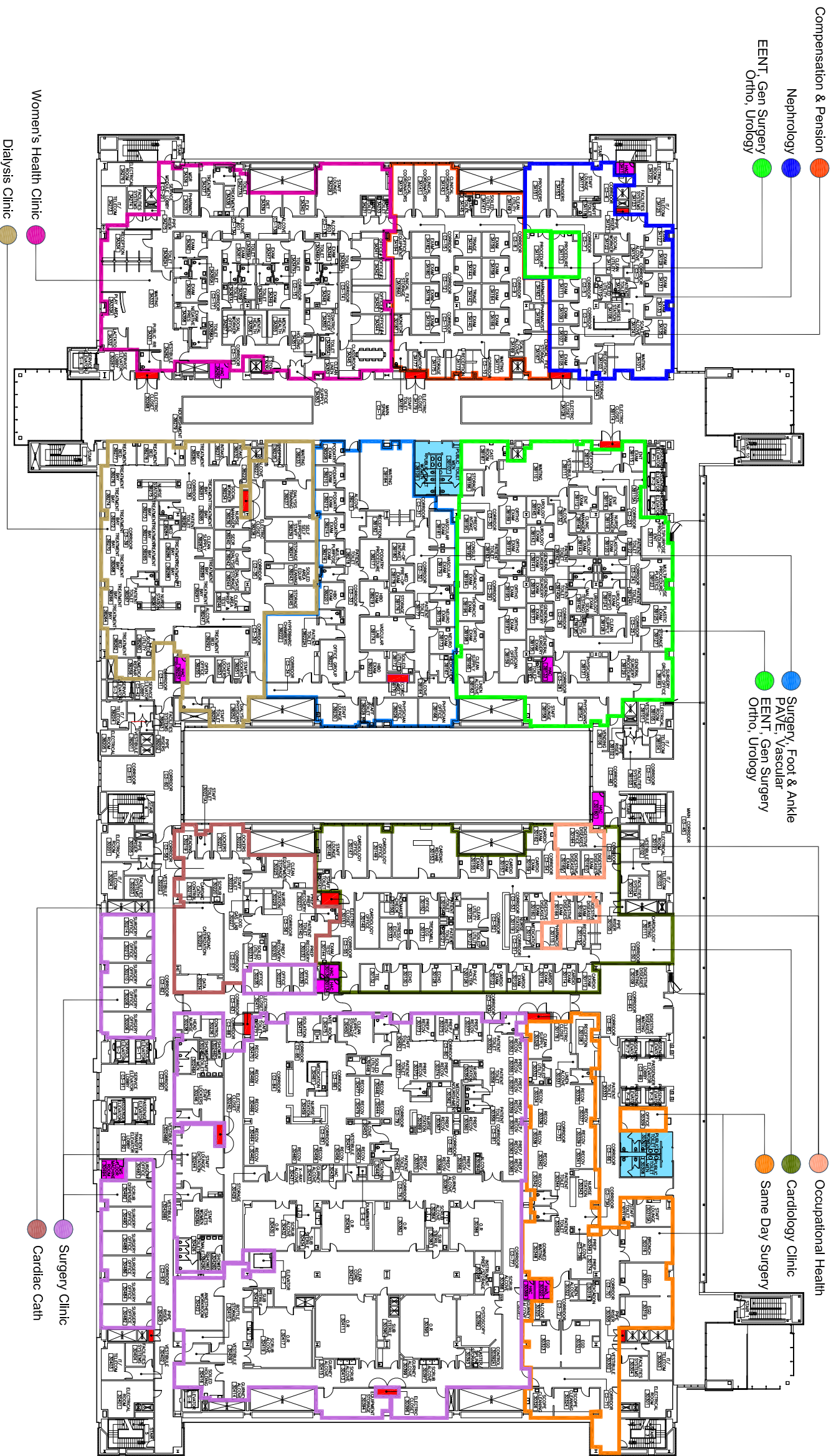
VA Southern Nevada Healthcare System



Building 1 - 2nd Floor

GRAPHIC SCALE: FEET

VA Southern Nevada Healthcare System



- Renal/Nephrology Clinic

●

Compensation & Pension

●

Women's Health Clinic

●

EENT, General Surgery, Ortho, Urology

●

Surgery, Foot & Ankle, PAVE, Vascular

●

Dialysis Clinic

●

Occupational Health

●

Cardiac Cath

●

Surgery Clinic
- Cardiology Clinic

●

Same Day Surgery Clinic

●

Common Space/ Circulation Space

●

Electrical/ IT/ Mechanical Areas

●

Environmental Management Service

●

Restrooms

Service Department

Building 1 - 3rd Floor

GRAPHIC SCALE = FEET



21 July 2014

VA Southern Nevada Healthcare System

Service Department/5th Floor

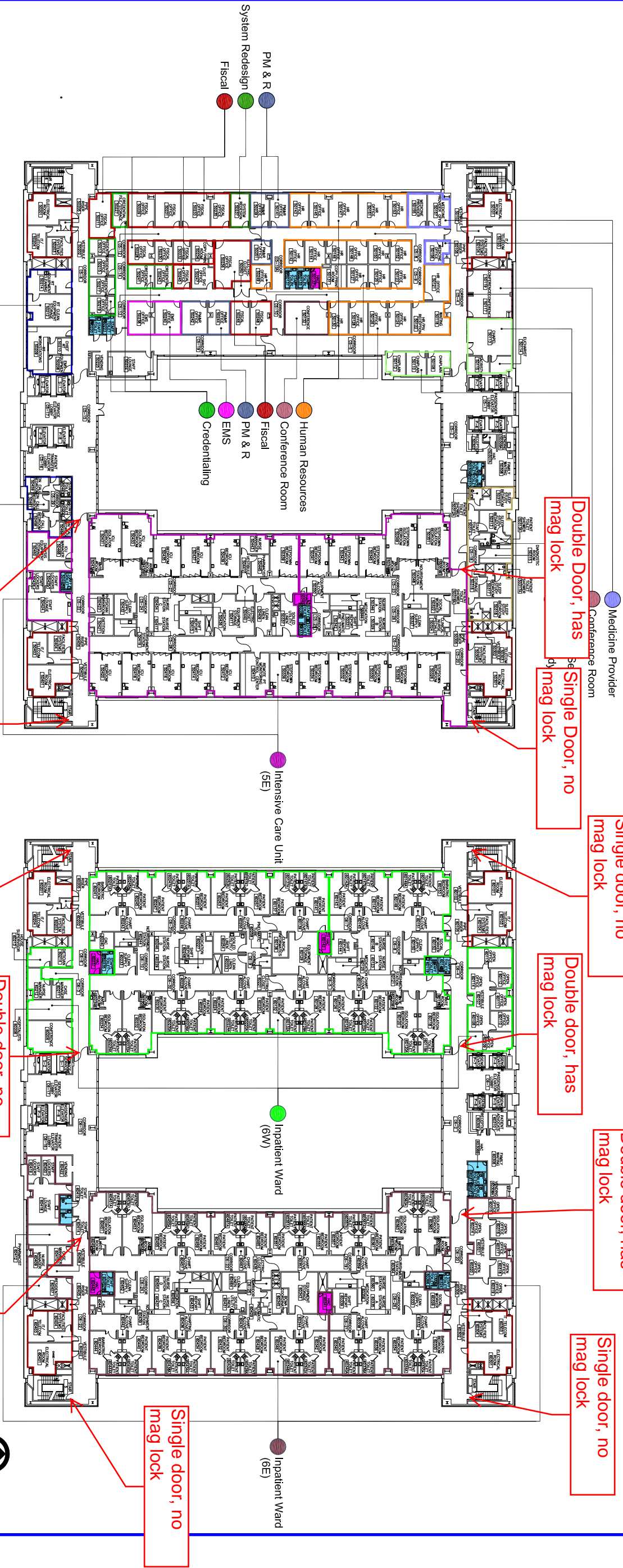
- Human Resources
- Fiscal Service
- Medicine-Dr Honsberg
- System Redesign
- PM&R
- Credentialing-Medical
- EMS
- Intensive Care Unit (5E)
- Respiratory Therapy

Service Department/5th Floor

- Chaplain Services
- Sleep Study Clinic
- Common Space/ Circulation Space
- Electrical/ IT/ Mechanical Areas
- HAC
- Conference Rooms
- Restrooms

Service Department/6th Floor

- Inpatient Ward (6W)
- Inpatient Ward (6E)
- Common Space/ Circulation Space
- Electrical/ IT/ Mechanical Areas
- Environmental Management Service
- Restrooms



Building 1 - 5th Floor

Double door, has mag lock

Single door, no mag lock

Single door, no mag lock

Building 1 - 6th Floor

Double door, has mag lock

Single door, no mag lock

Double door, no mag lock

Single door, no mag lock



21 July 2014