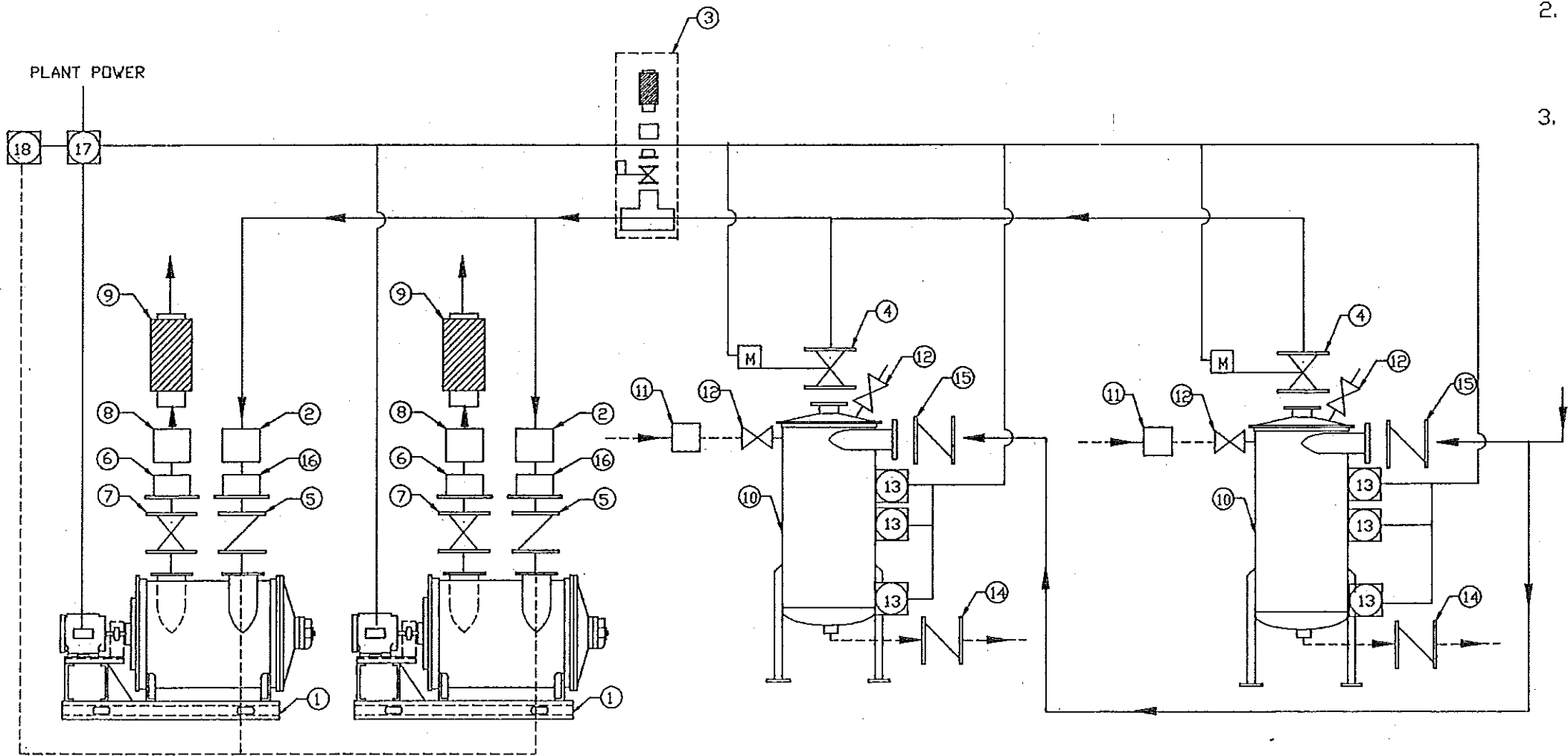


ITEM	QTY	DESCRIPTION	CAT/DWG NO	ITEM	QTY	DESCRIPTION	CAT/DWG NO
1	2	VACUUM PRODUCER	B 313153-54	10	2	WET SEPARATOR	B 313153-54A
2	2	FLEXIBLE JOINT 6" PIPE	SLR-90079	11	2	MESH PIPE STRAINER FOR WASHDOWN	539-S-250
3	1	BLEED ASSEMBLY EMBC 5260	A-313153EMBC	12	4	SOLENOID VALVE (ASCO)	8210D95
4	2	MOTOR OPER. BUTTERFLY VALVE (BRAY)	31106 - 71/6	13	6	LEVEL SWITCHES (W.E. ANDERSON)	LGEPB-B-S-3-0
5	2	CHECK VALVE (TECHNOCHECK)	VLV-90135	14	2	BALL CHECK VALVE (ASAHI)	
6	2	COMPANION FLANGE	AFA-90014	15	2	CHECK VALVE (TECHNOCHECK)	VLV-90146
7	2	BLAST GATE	GA-206	16	2	COMPANION FLANGE	FLG-90005
8	2	FLEXIBLE JOINT 6" (TUBE)	SLR-90078	17	1	CONTROL PANEL	
9	2	EXHAUST SILENCER	9006	18	1	REMOTE LOW VOLTAGE CONTROL PANEL	

NOTES:

1. FLEXIBLE CONNECTION IS TO PROVIDE ISOLATION FROM PIPING SYSTEM
2. THIS SYSTEM SCHEMATIC SHOWS FUNCTIONAL LOCATIONS OF COMPONENTS ONLY. FOR COMPONENT DETAILS SEE REFERENCE DRAWINGS OR CATALOGS.
3. PITCH PIPING 1/8" PER FOOT TOWARD SEPARATOR ON SEPARATOR INLET.



LEGEND

- SYSTEM PIPING/AIR FLOW DIRECTION
- - - SYSTEM WATER PIPING/DIRECTION
- - - AIRLINE FOR PRESSURE GAGES
- SYSTEM WIRING

THE SPENCER TURBINE CO.			
WINDSOR, CT. 06095			
TITLE: SYSTEM SCHEMATIC			
SIZE B	DWG. NO. 313153-54S	REV. 0	
DR. BY JWG	CK'D BY EMS	ENG. PL	ECN
DATE 5-18-93	DATE 5-18-93	DATE 5-18-93	
SCALE: NONE		SHEET # 1 OF # 1	

EXISTING

NO.	DESCRIPTION	ECN	DATE	DR.BY.	CH'D.
REVISIONS					