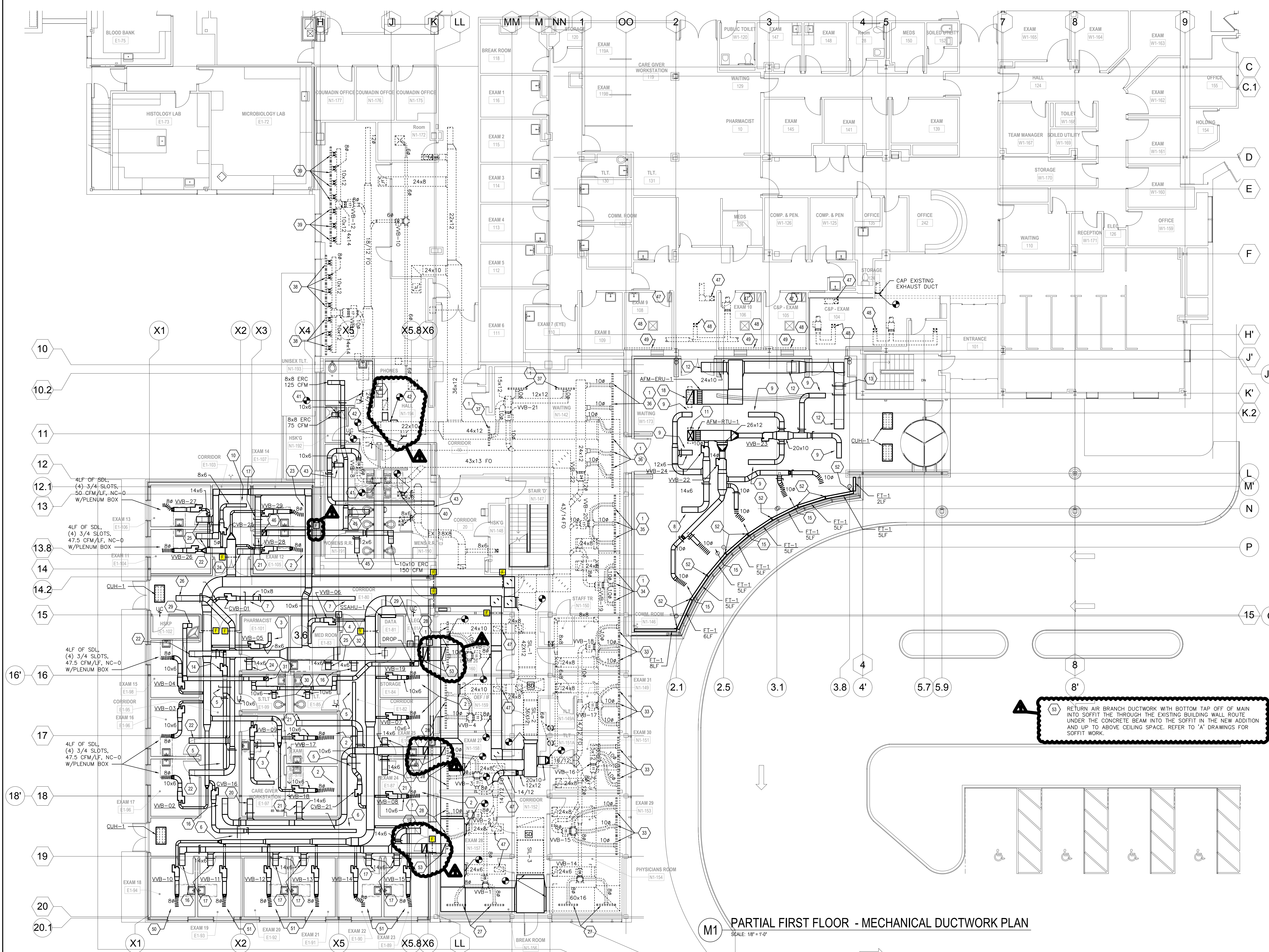
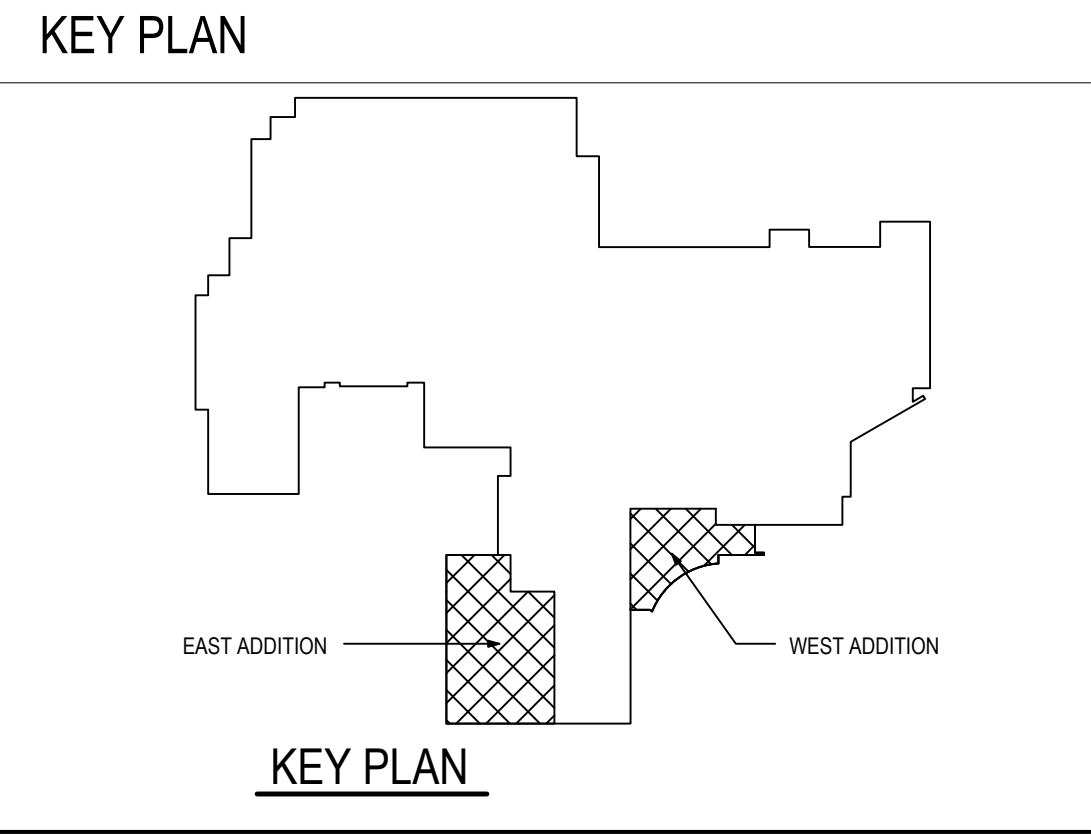


three inches = one foot
one and one half inch = one foot
one inch = one foot
three fourths inch = one foot
one half inch = one foot
one quarter inch = one foot
three eighths inch = one foot
one eighth inch = one foot



- SHEET KEYNOTES**
- 1 EXISTING LINEAR SLOT SUPPLY DIFFUSER SHALL NEED TO BE SHIFTED IN TO NEW CEILING GRID, PROVIDE BRANCH DUCTWORK AS REQUIRED
 - 2 4LF OF SDL, (4) 3/4 SLOTS, 37.5 CFM/LF, NC-0, W/PLENUM BOX
 - 3 6# SDC-4, (130 CFM)
 - 4 8# SDC-3, (200 CFM)
 - 5 6# SDC-2, (110 CFM)
 - 6 6# SDC-2, (120 CFM)
 - 7 8# SDC-2, (150 CFM)
 - 8 12# SDC-4, (350 CFM)
 - 9 10# SDC-4, (275 CFM)
 - 10 6# SDC-4, (130 CFM)
 - 11 26x14 SUPPLY AIR DUCT UP W/TRANSITION TO RTU-1 ABOVE ON ROOF
 - 12 22x22 RGC, (1,150 CFM)
 - 13 16x16 RGC, (550 CFM)
 - 14 CVB-20
 - 15 4LF OF SDL, (6) 3/4 SLOTS, 100 CFM/LF, NC-21, W/PLENUM BOX (TYP OF 5)
 - 16 12x12 RGC, (220 CFM)
 - 17 12x12 RGC, (180 CFM)
 - 18 36x18 RETURN AIR DUCT UP W/TRANSITION TO ERU-1 ABOVE ON ROOF
 - 19 12x12 RGC, (240 CFM)
 - 20 12x12 RGC, (260 CFM)
 - 21 12x12 RGC, (150 CFM)
 - 22 12x12 RGC, (190 CFM)
 - 23 4LF OF SDL, (4) 3/4 SLOTS, 45 CFM/LF, NC-0 W/PLENUM BOX
 - 24 12x12 RGC, (130 CFM)
 - 25 12x12 RGC, (200 CFM)
 - 26 12x12 RGC, (300 CFM)
 - 27 REBALANCE EXISTING DIFFUSERS TO 125 CFM EA.
 - 28 REBALANCE EXISTING DIFFUSERS TO 200 CFM EA.
 - 29 8x8 ERC, (100 CFM)
 - 30 8x8 ERC, (125 CFM)
 - 31 10x10 EXHAUST AIR DUCT UP WITH TRANSITION TO PRV-1 ABOVE ON ROOF (450 CFM)
 - 32 12x12 RGC, (140 CFM)
 - 33 REBALANCE EXISTING DIFFUSERS TO 155 CFM EA.
 - 34 REBALANCE EXISTING DIFFUSERS TO 165 CFM EA.
 - 35 REBALANCE EXISTING DIFFUSERS TO 205 CFM EA.
 - 36 REBALANCE EXISTING DIFFUSERS TO 240 CFM EA.
 - 37 REBALANCE EXISTING DIFFUSERS TO 280 CFM EA.
 - 38 REBALANCE EXISTING DIFFUSERS TO 105 CFM EA.
 - 39 REBALANCE EXISTING DIFFUSERS TO 90 CFM EA.
 - 40 EXISTING 6x6 EXHAUST AIR REGISTER SHALL NEED TO BE SHIFTED IN TO NEW CEILING GRID, PROVIDE BRANCH DUCTWORK AS REQUIRED, REBALANCE TO (100 CFM)
 - 41 CAP EXISTING UNUSED OPENINGS IN DUCT
 - 42 CAP EXISTING UNUSED DUCTS
 - 43 8# SDC-3, (250 CFM)
 - 44 EXISTING 22x10 RETURN AIR GRILLES SHALL NEED TO BE SHIFTED IN TO NEW CEILING GRID, PROVIDE BRANCH DUCTWORK AS REQUIRED
 - 45 10x10 ERC, (175 CFM)
 - 46 14x10 EXHAUST AIR DUCT UP WITH TRANSITION TO PRV-2 ABOVE ON ROOF (700 CFM)
 - 47 EXISTING RETURN AIR GRILLE SHALL NEED TO BE SHIFTED IN TO NEW CEILING GRID, PROVIDE BRANCH DUCTWORK AS REQUIRED
 - 48 EXISTING SUPPLY DIFFUSER SHALL NEED TO BE SHIFTED IN TO NEW CEILING GRID, PROVIDE BRANCH DUCTWORK AS REQUIRED
 - 49 EXISTING FIN-TUBE SHALL BE ABANDON IN PLACE, PIPING SHALL BE DISCONNECTED, REMOVED TO BELOW FLOOR AND CAPPED
 - 50 4LF OF SDL, (3) 3/4 SLOTS, 55 CFM/LF, NC-18, W/PLENUM BOX
 - 51 4LF OF SDL, (4) 3/4 SLOTS, 45 CFM/LF, NC-0, W/PLENUM BOX
 - 52 CLOSE OFF PANELS SHALL BE ADD AT ALL TOP AND SIDES OF CONCEALED PIPING AND THE SPLITS BETWEEN SECTION OF FIN-TUBE TO MAKE IT LOOK CONTIGUES, OR FIN-TUBE ENCLOSURE CAN BE LONGER AND CUT AT ANGLES TO BE MADE TO LOOK CONTIGUES IF CLOSE PANELS THEY SHOULD MATCH FIN-TUBE ENCLOSURE



RETURN AIR DUCTWORK & FIRE DAMPER MODIFICATIONS 06-05-09	CONSULTANTS:	ARCHITECT/ENGINEER:	Project Title: PARTIAL FIRST FLOOR - MECHANICAL DUCTWORK PLAN AS-BUILT	Project Title: VA MEDICAL CENTER SPECIALTY CARE CLINIC	Project Number: 562-310
2008.021.00	PROJECT NUMBER: CAD FILE: M-103.DWG COPYRIGHT - WEBER MURPHY FOX INC. 2008		H.F. LENZ COMPANY Engineers Planners Surveyors Energy Consultants www.hflenz.com	Location 135 EAST 38TH STREET ERIE, PA 16504-1596	Building Number: 562-1
Revisions:			Approved: 38TH STREET ERIE, PA 16504-1596 Project Director:	Date: 08-25-08 Checked: JMD Drawn: NJB	Drawing Number: M-103-X-1 Dwg 7 of 16