

	Date	Revision

Approved: Med. Ctr.
Director

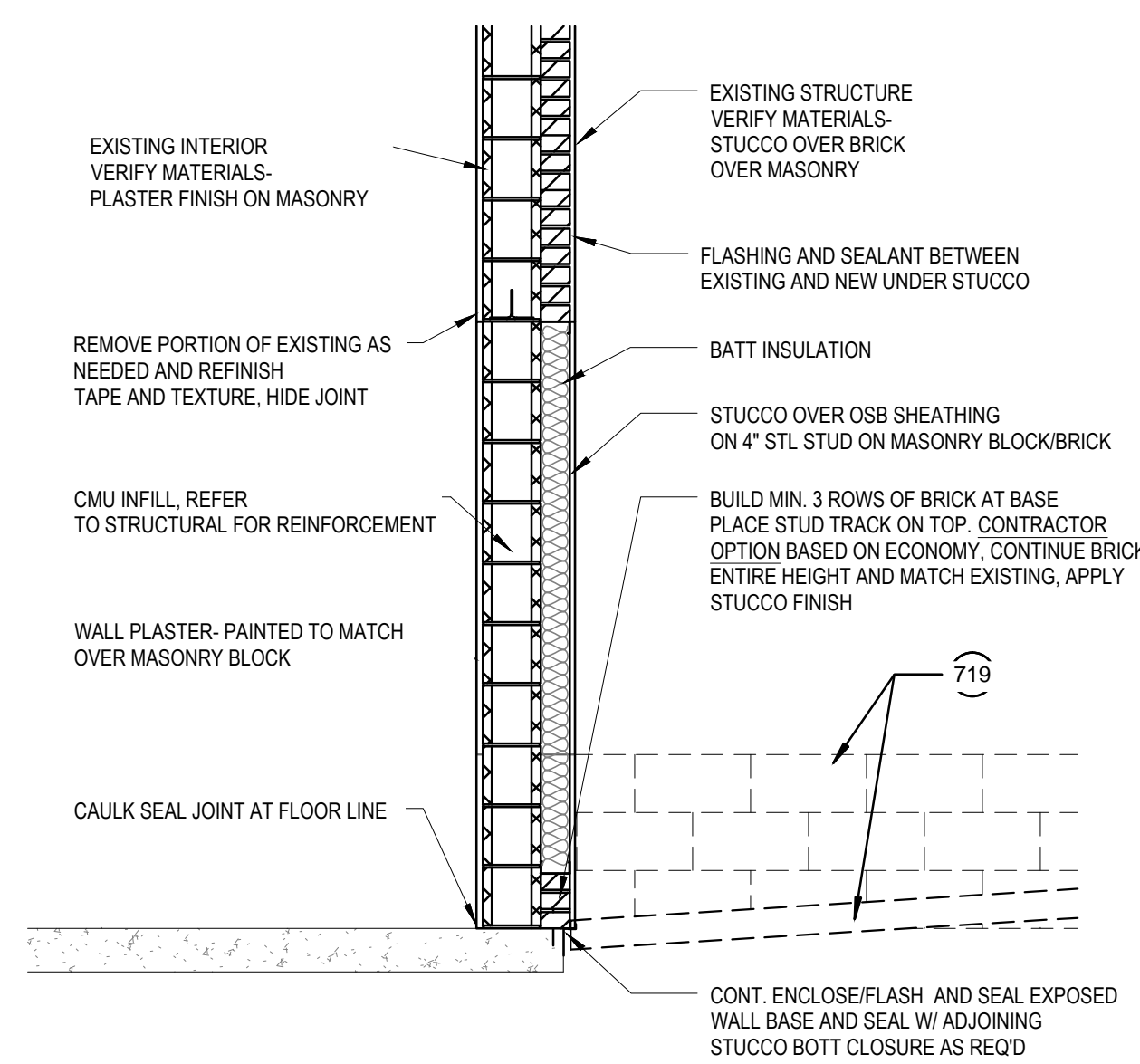
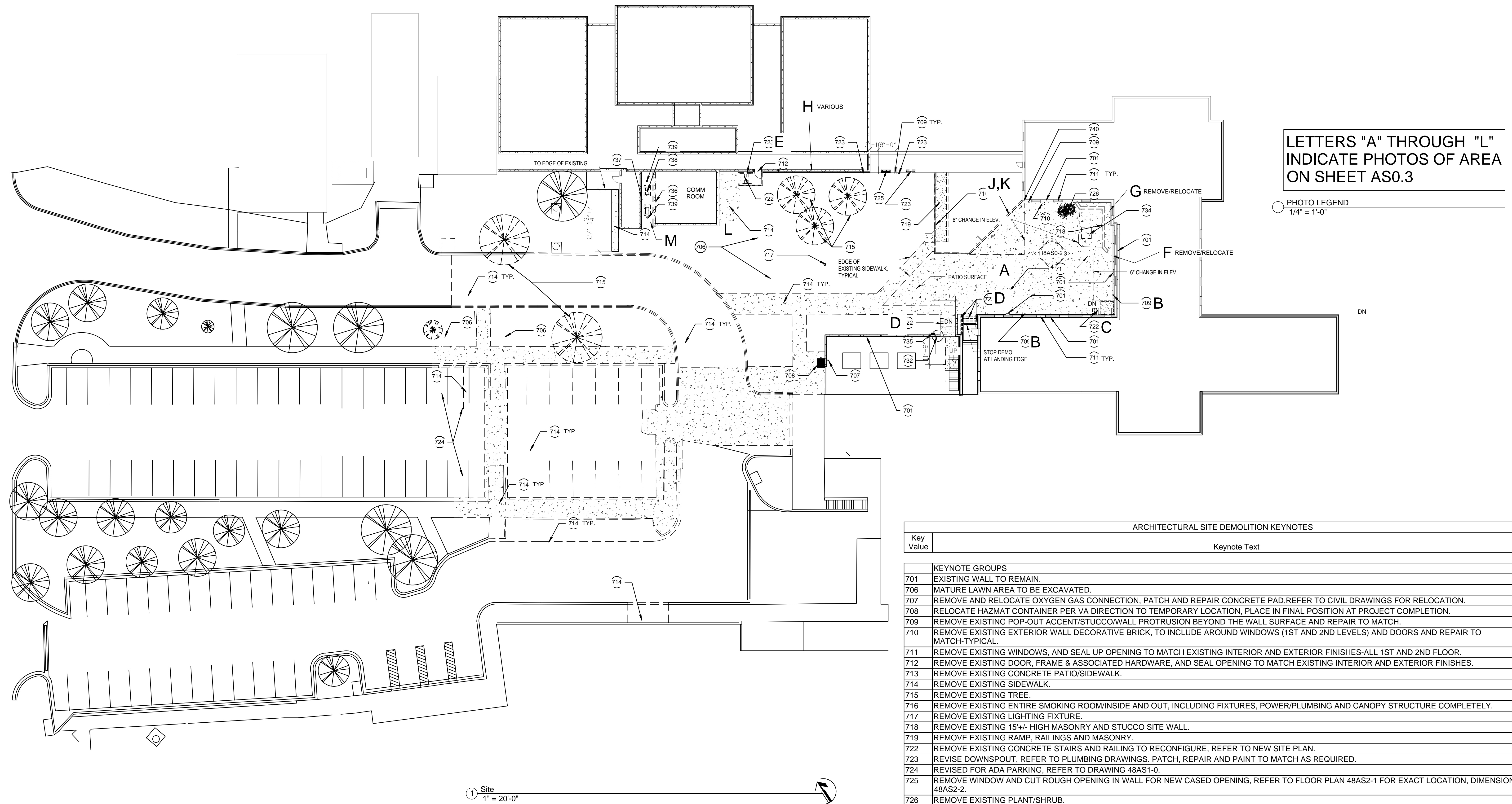
Approved: Asst. Admin
Engineering Service

Approved: Asst. VA Medical Director

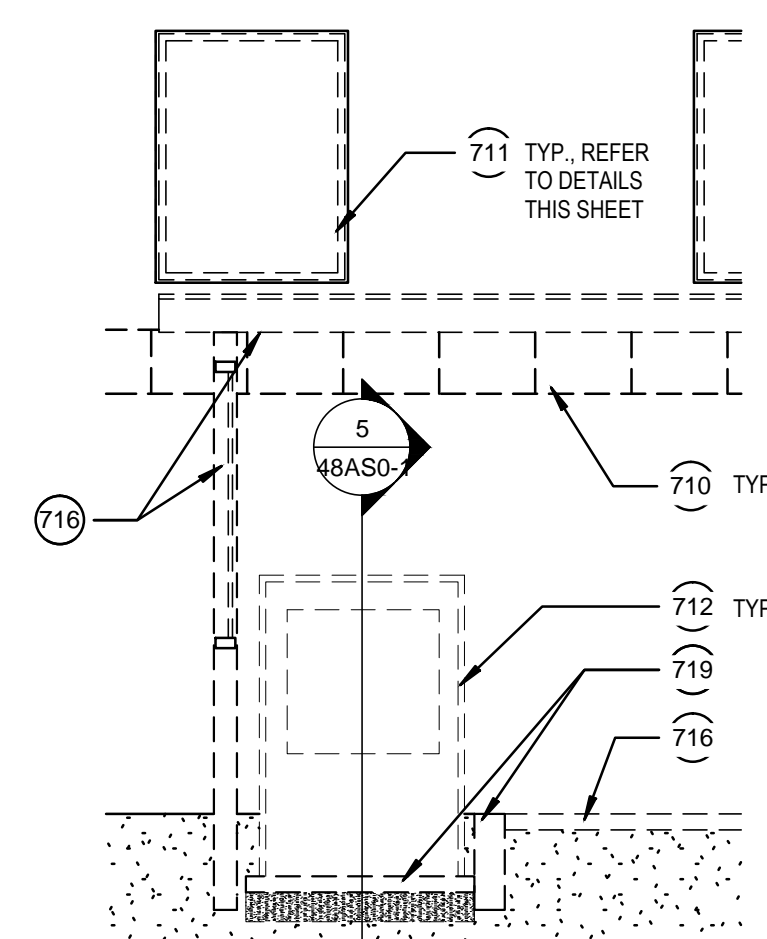
Approved: Chief of Facilities

Approved: Chief of
Engineering

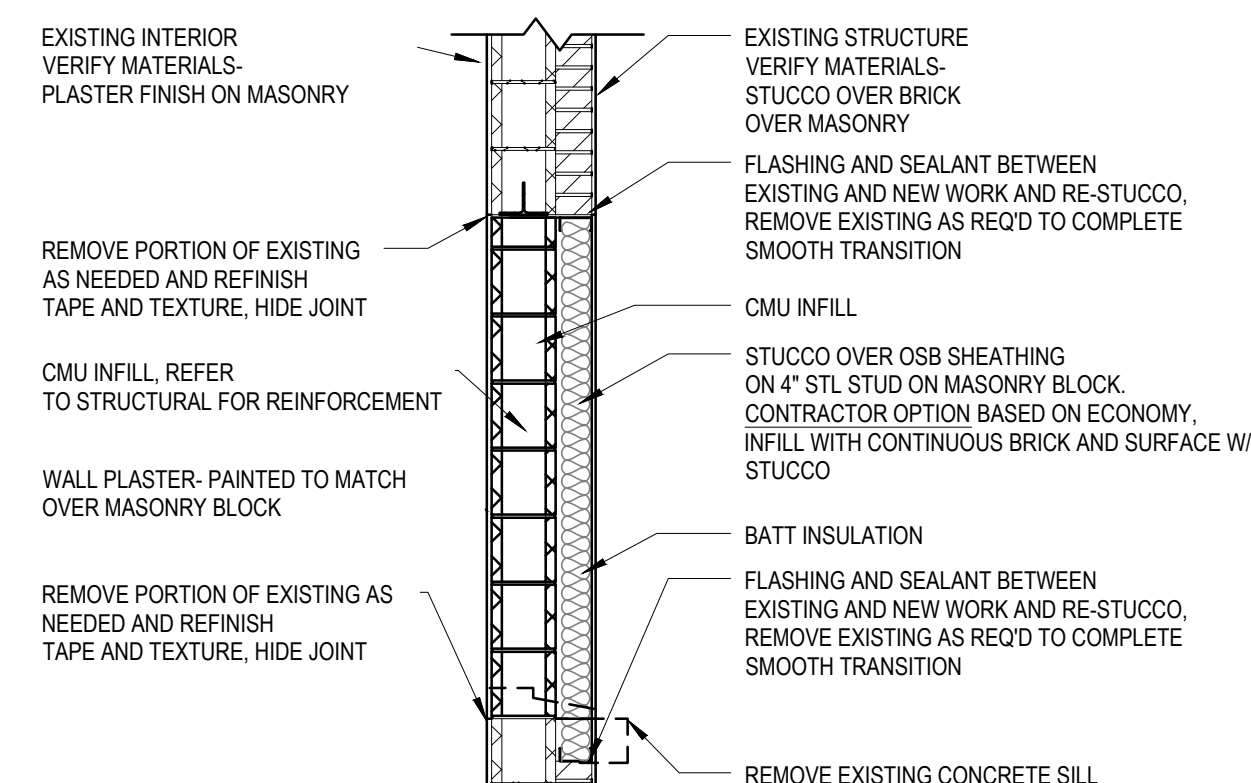
Approved: Chief of Projects



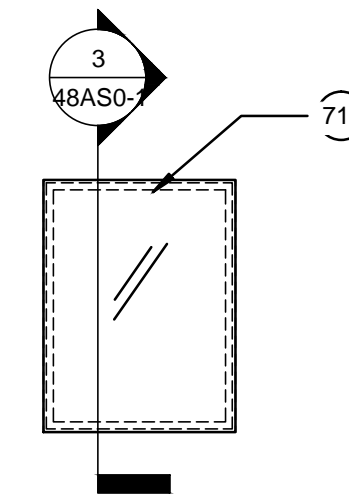
5 DOOR INFILL DETAIL
1/2" = 1'-0"



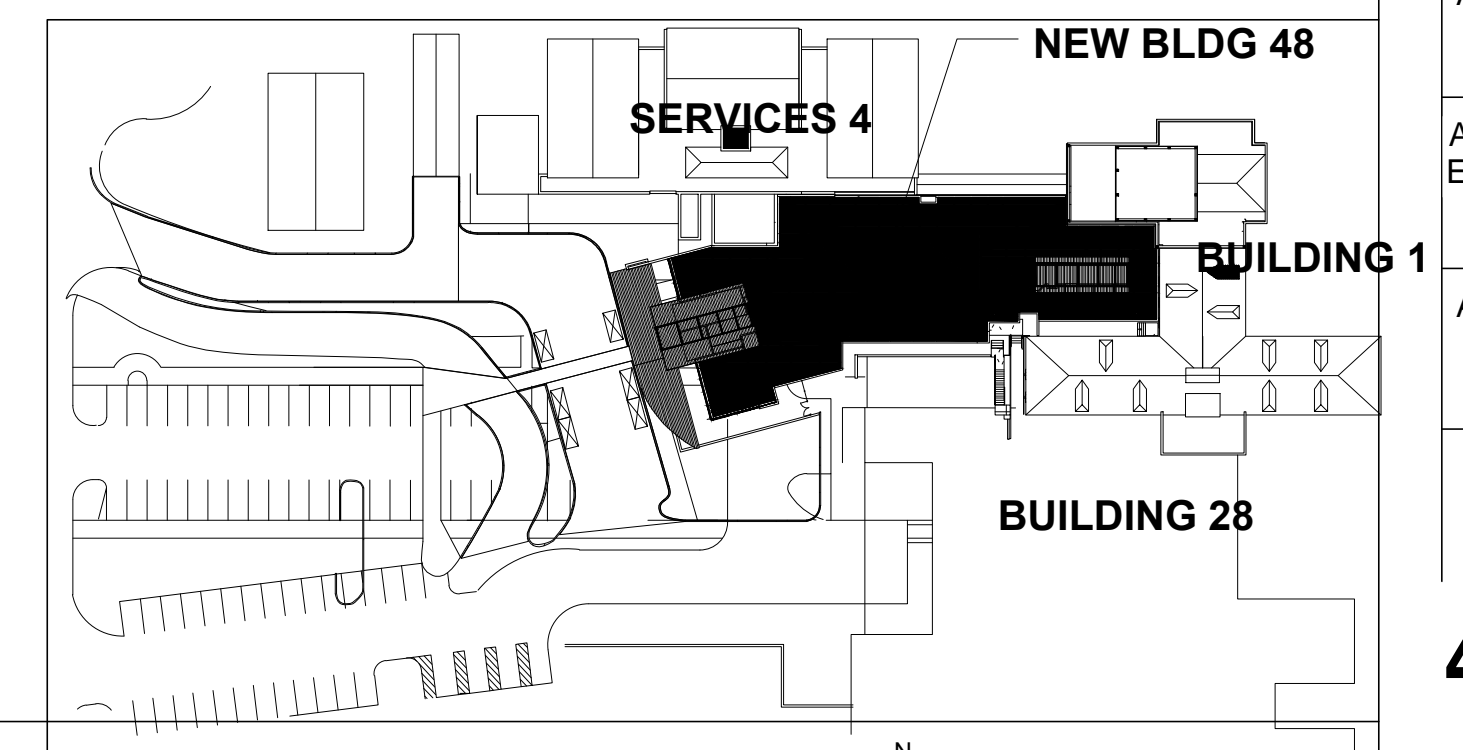
4 DOOR REMOVAL DETAIL
1/4" = 1'-0"



③ WINDOW INFILL DETAIL
1/2" = 1'-0"



② TYP. WINDOW REMOVAL
1/4" = 1'-0"



KEY PLAN