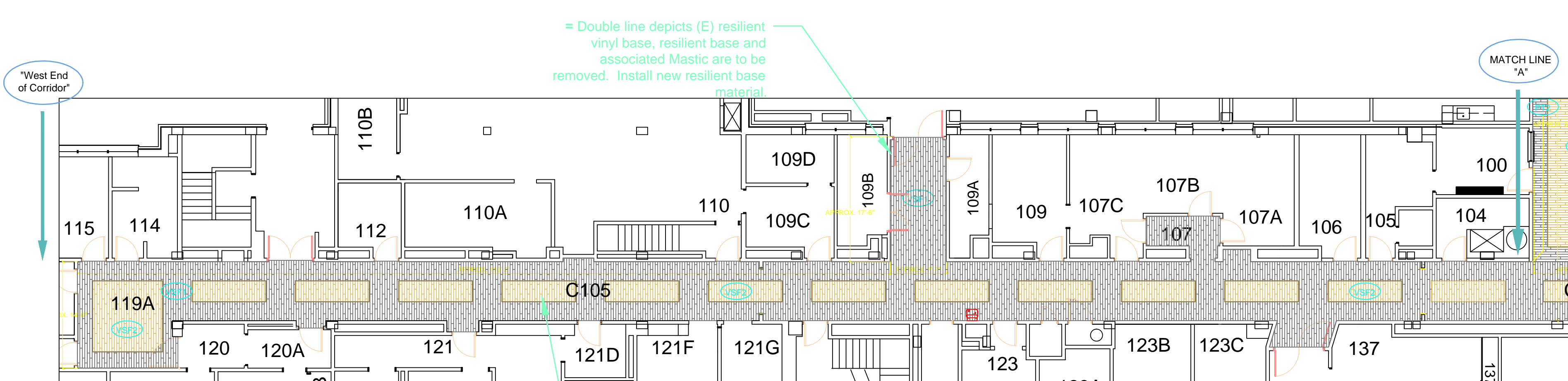
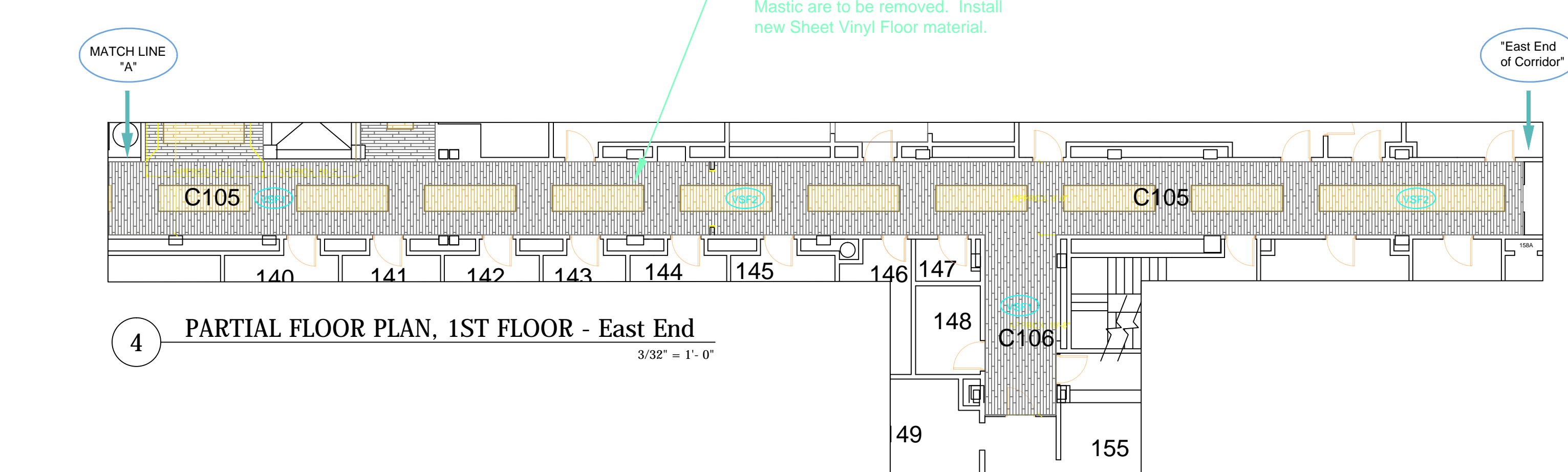


three inches = one foot  
one and one half inches = one foot  
one inch = one foot  
three quarters inch = one foot  
one half inch = one foot  
three eighths inch = one foot  
one quarter inch = one foot  
one eighth inch = one foot

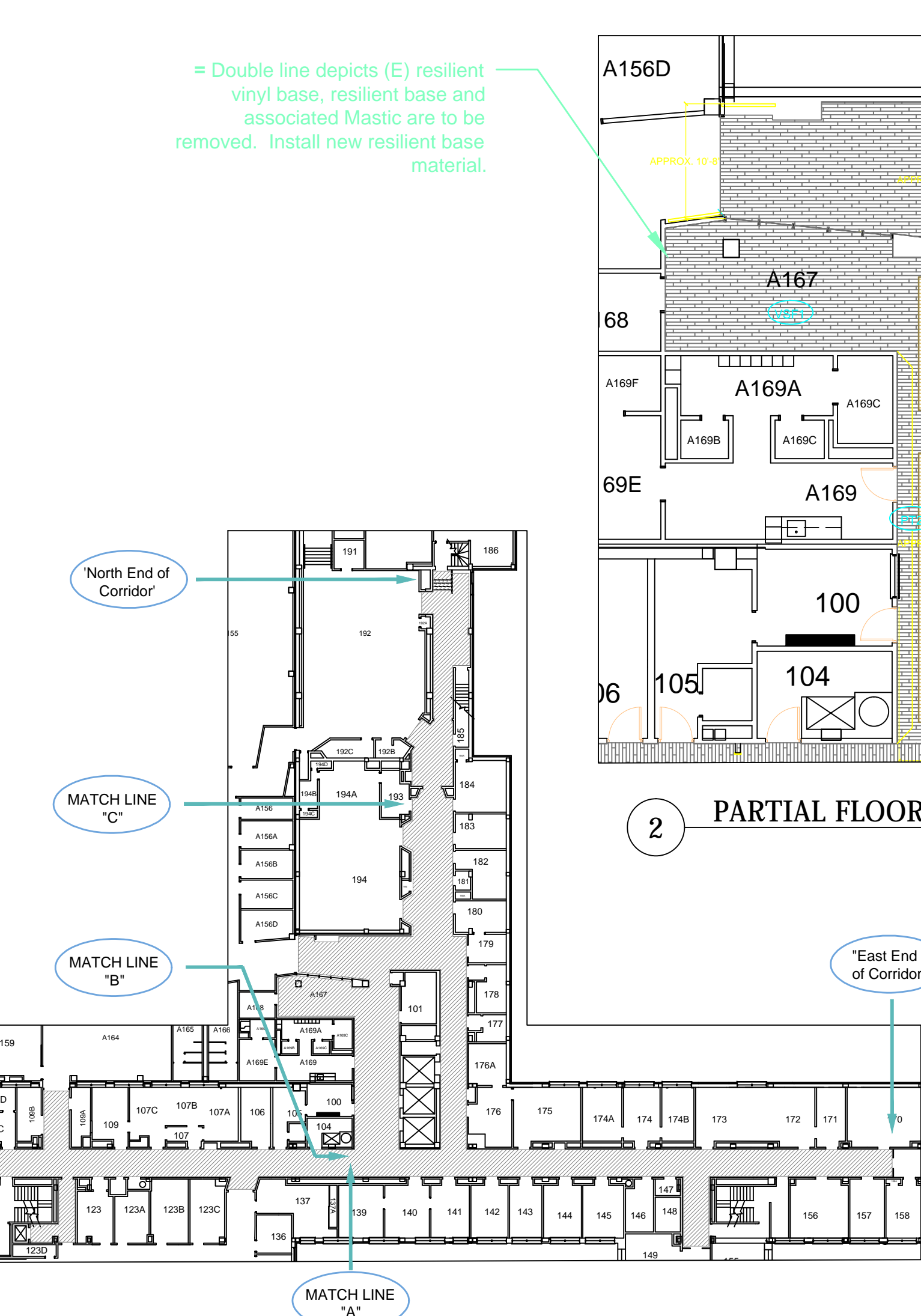


3 PARTIAL FLOOR PLAN, 1ST FLOOR - West End  
3/32" = 1'-0"

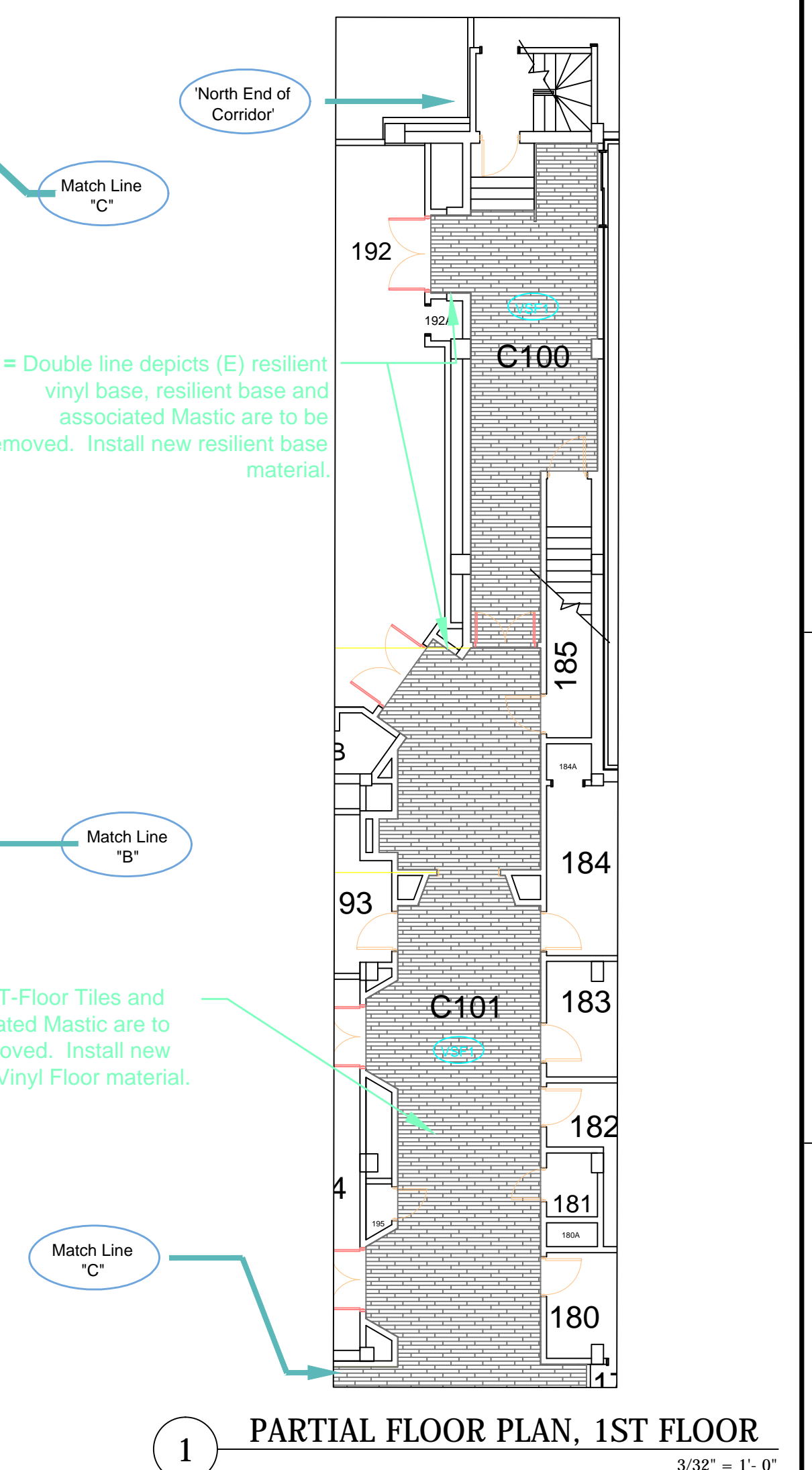


4 PARTIAL FLOOR PLAN, 1ST FLOOR - East End  
3/32" = 1'-0"

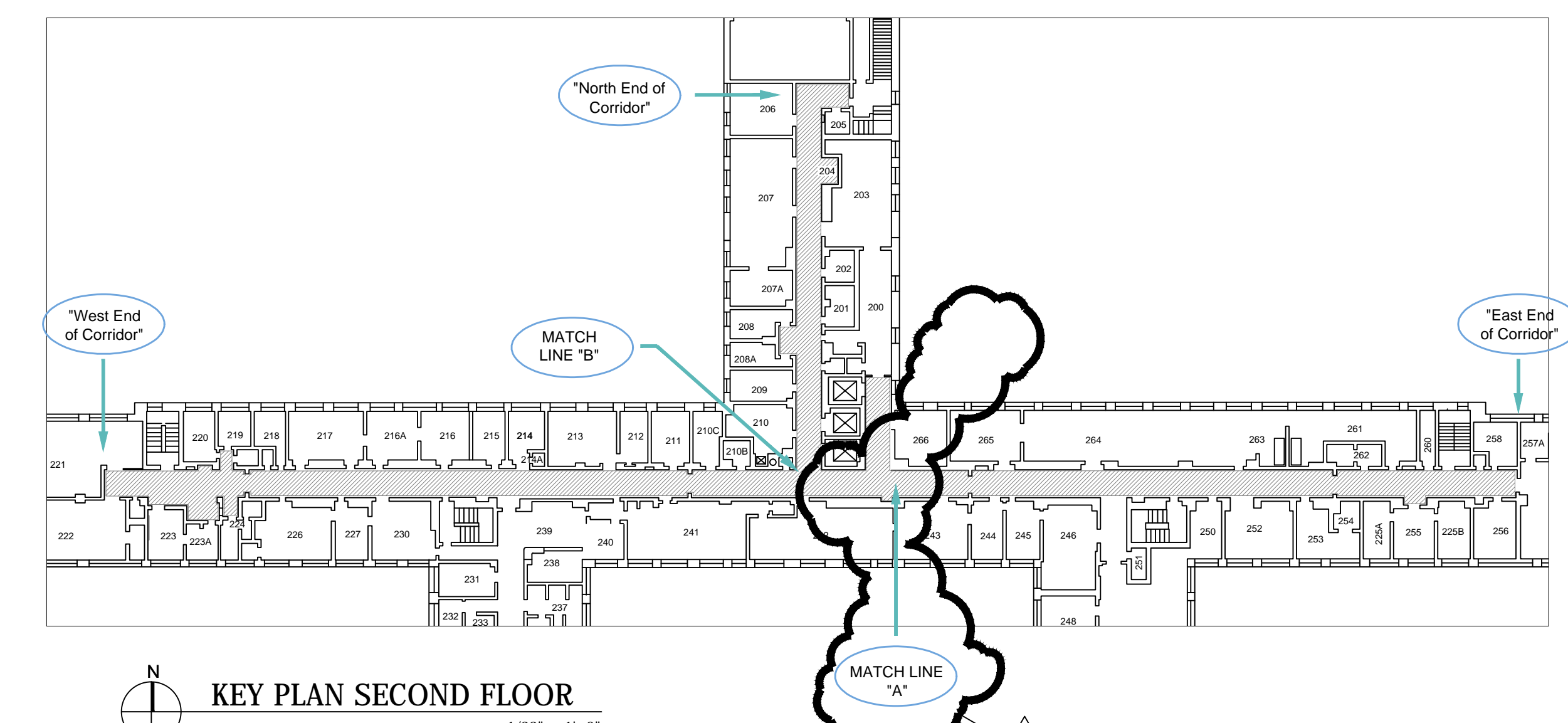
KEY PLAN FIRST FLOOR  
1/32" = 1'-0"



2 PARTIAL FLOOR PLAN, 1ST FLOOR  
3/32" = 1'-0"



1 PARTIAL FLOOR PLAN, 1ST FLOOR  
3/32" = 1'-0"



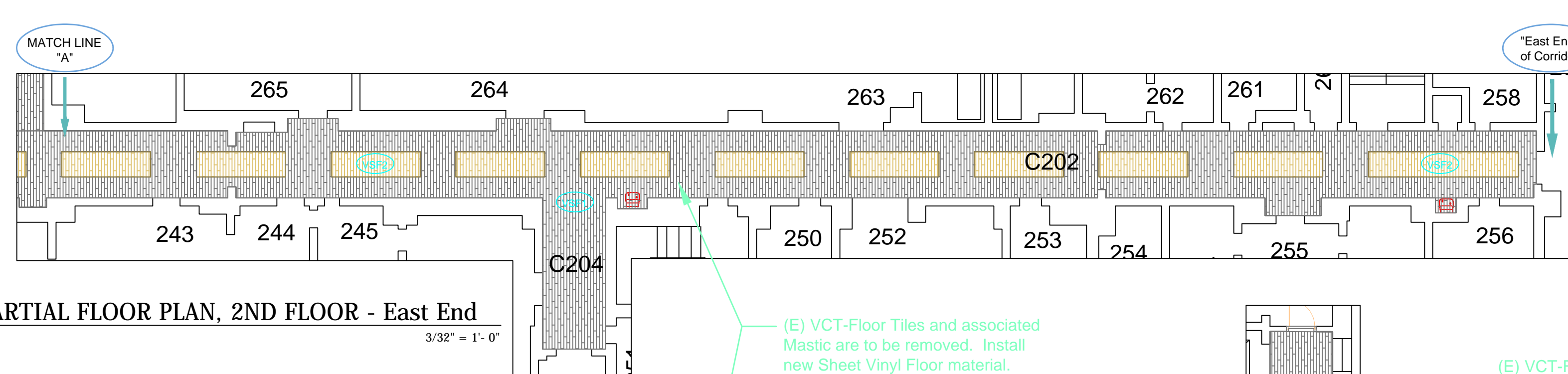
KEY PLAN SECOND FLOOR  
1/32" = 1'-0"

### FLOOR PLAN NOTES

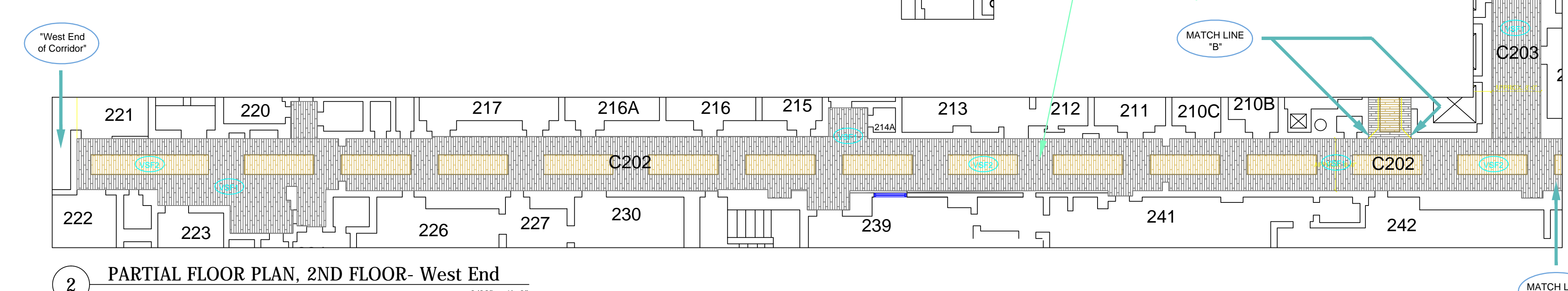
1. New Flooring material is to be installed with the pattern aligned as shown. Both the 'Field' - VSF1 and the 'Accent' - VSF2 have a pattern.
2. The New Flooring is to terminate and abut the existing flooring that is to remain, beneath the center line of each door that borders the corridors. In some special instances there will not be a door to align the termination of the flooring. At these locations, the new flooring will be terminated in a straight line with the existing flooring without any type of termination strips. Actual location to be determined by the VA.
3. Install metal transition strips between carpet and resilient flooring where applicable.

### DEMOLITION PLAN NOTES:

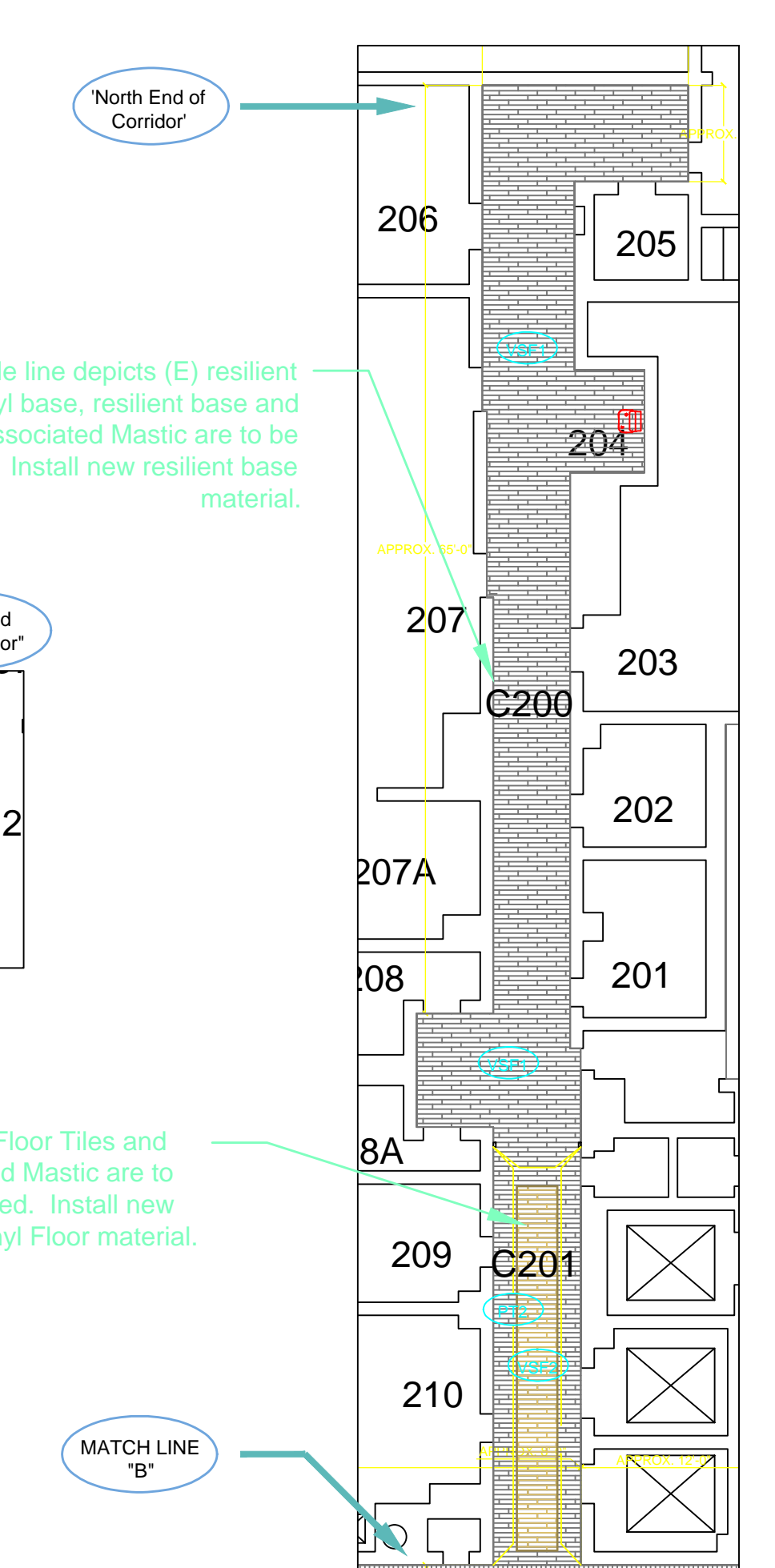
1. REMOVE WALL DECORATIVE BORDER ALONG CORRIDOR WALLS.
2. WHERE DECORATIVE BORDER IS REMOVED, APPLY FINISHING COMPOUND TO A LEVEL 5 FINISH. COMPOUND SHALL MEET ASTM C475 AND ASTM C840 AND BE FREE OF ANTIFREEZE, VINYL ADHESIVES, PRESERVATIVES, BIOCIDES, AND OTHER VOCs.
3. REMOVE ALL VINYL COVE BASE (VCB) WHERE APPLICABLE AND PREPARE WALLS TO RECEIVE NEW FINISH AND BASE.
4. REMOVE VCT FLOOR TILE AS SHOWN AND PREPARE FLOOR TO RECEIVE NEW FINISH.
5. REMOVE WIREMOLD FROM WALL, COIL PHONE LINES ABOVE CEILING. PREPARE WALL TO RECEIVE FINISHES.
6. REMOVE FROM DOOR FRAMES ALL EXISTING DOOR SILENCERS AND REPLACE WITH NEW DOOR SILENCERS.
7. EXISTING TERRAZO COVE BASE TO REMAIN UNTOUCHED. PROTECT EXISTING TERRAZO BASE WHEN PAINTING COVE GLAZE TILE.
8. PREP AND PAINT EXISTING WOODEN BASE WHERE APPLICABLE.



3 PARTIAL FLOOR PLAN, 2ND FLOOR - East End  
3/32" = 1'-0"




2 PARTIAL FLOOR PLAN, 2ND FLOOR - West End  
3/32" = 1'-0"



1 PARTIAL FLOOR PLAN, 2ND FLOOR  
3/32" = 1'-0"

## BID ITEM # 1

#1 - Clarification to 'Break Lines'.	02/24/12	VA Northern Indiana Health Care System, Fort Wayne 2121 Lake Avenue Fort Wayne, IN 46805	Approved: Medical Center Director Daniel D. Hendee, FACHE	Drawing Title  Floor Plan - 1st and 2nd Floor	Project Title  Interior Halls and Walls	Project Number 610A4-11-149			
Removed Match Line 'C' and repositioned Match Line 'A' on the Second Floor Key Plan.			Approved: Associate Director for Operations Helen Rhodes			Building Number 1			
				Approved: Project Director	Location VA NIHCS, Fort Wayne, IN	Drawing Number A-101-R			
						Dwg. 1 of 12			
Revisions:	Date			Approved: Engineering Service Charles Applewhite	Date 08/05/2011	Checked CDA	Drawn VM		