

Veterans Affairs Medical Center

Building #1 – Add Booster Pumps, SPD

Project # 636-12-811

4101 Woolworth Avenue

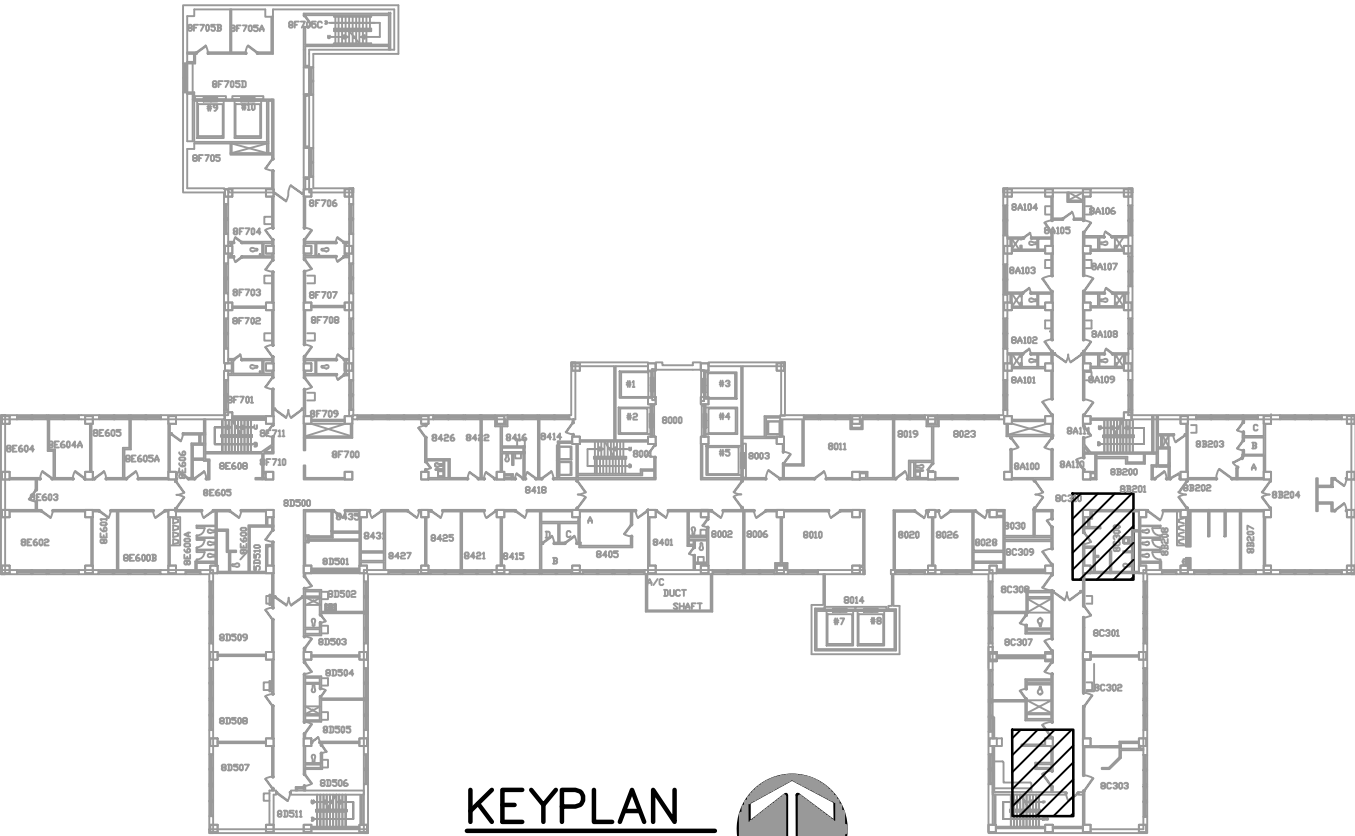
Omaha, Nebraska 68105

Index of Drawings

- 1 A0.1 Cover Sheet and General Notes
- 2 A1.1 Demolition and Floor Plans
- 3 A7.1 Door and Frame Schedules and Details
- 4 P1.1 Plumbing Demolition and Plans
- 5 P5.1 Pump Details
- 6 P5.2 Plumbing Details
- 7 E1.1 Electrical Plans

GENERAL NOTES:

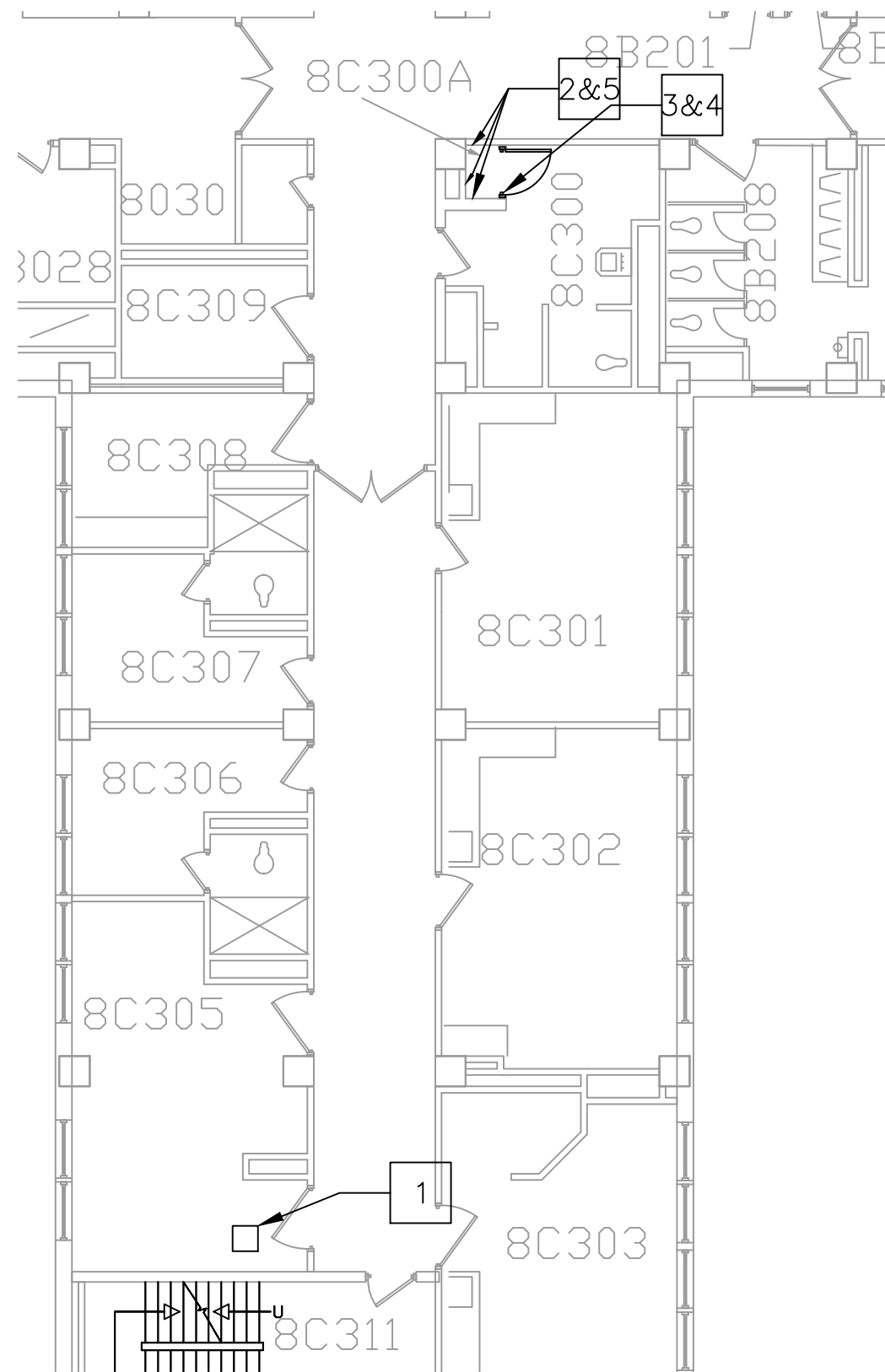
- 1. ALL WORK IN THE HALLWAY AND IN ROOM 8C304 MUST BE DONE ON SATURDAYS OR SUNDAYS UNLESS OTHERWISE APPROVED BY THE COTR.
- 2. ENSURE ALL DOORS TO ROOMS OFF OF CORRIDOOR ARE CLOSED PRIOR TO WORK IN HALLWAY.
- 3. ALL CEILING TILES MUST BE REPLACED AT THE END OF EACH WORK SHIFT
- 4. WORK ARE MUST BE THOUROUGHLY CLEANED AT THE END OF EACH WORK SHIFT TO ALLOW FULL HOSPITAL OPERATIONS
- 5. ALL WORK SHALL COMPLY WITH APPLICABLE REGULATIONS, CODES AND ORDINANCES



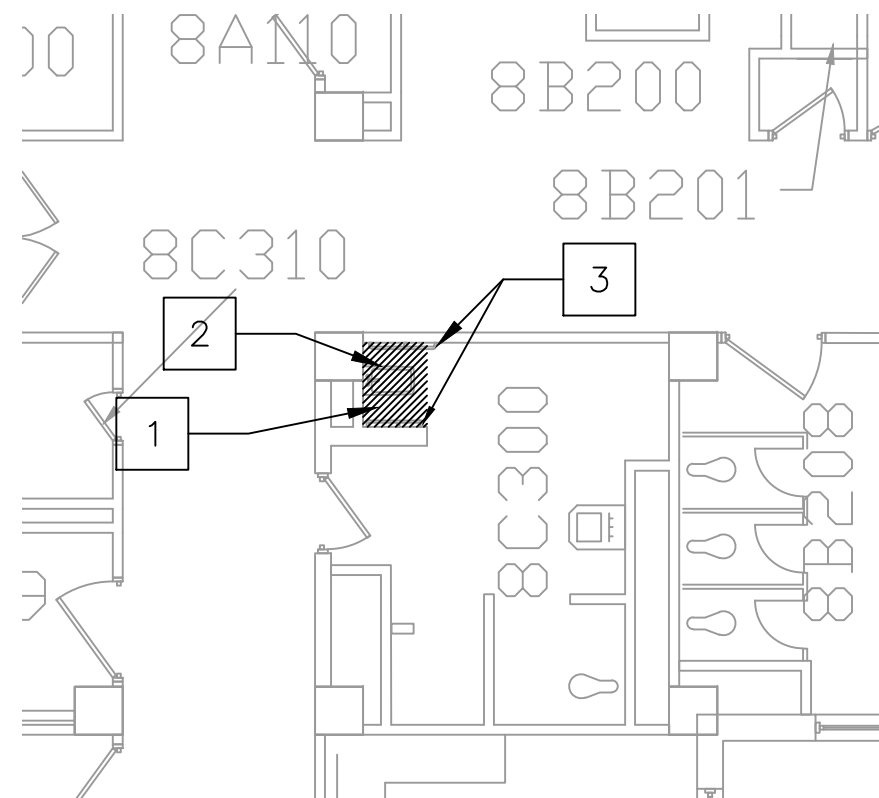
COVER SHEET AND GENERAL NOTES

ADD BOOSTER PUMPS, SPD
PROJECT # 636-12-811
OMAHA VA, BUILDING #1

DWN BY GLS	DRAWING NUMBER 1 OF 7	DATE 13 JAN 2012
SCALE	SHEET A0.1	



PARTIAL 8TH FLOOR PLAN
 $\frac{3}{32}''=1'$



8TH FLOOR DEMO PLAN
 $\frac{1}{8}''=1'$

GENERAL NOTES:

1. ALL WORK IN THE HALLWAY AND IN ROOM 8C304 MUST BE DONE ON SATURDAYS OR SUNDAYS UNLESS OTHERWISE APPROVED BY THE COTR.
2. ENSURE ALL DOORS TO ROOMS OFF OF CORRIDOOR ARE CLOSED PRIOR TO WORK IN HALLWAY.
3. ALL CEILING TILES MUST BE REPLACED AT THE END OF EACH WORK SHIFT
4. WORK ARE MUST BE THOUROUGHLY CLEANED AT THE END OF EACH WORK SHIFT TO ALLOW FULL HOSPITAL OPERATIONS

DEMOLITION KEY NOTES

1. DEMO HARD CEILING AND WALLS AS REQUIRED TO ACCESS PLUMBING
2. REMOVE SITS BATH FIXTURE AND CAP WATER LINES IN WALL AND INSTALL GRATE OVER DRAIN
3. REMOVE HAND RAILS

NEW WORK NOTES

1. INSTALL 20" X 20" STAINLESS STEEL ACCESS PANEL IN CEILING
2. EXTEND WALLS TO THE STRUCTURAL DECK ABOVE. FIRE TAPE AND FIRE SEAL ALL PENETRATIONS
3. BUILD METAL STUD PARTITION WITH $\frac{5}{8}''$ GYPSUM EACH SIDE
4. INSTALL FIRE RATED WOOD DOOR
5. PATCH HOLES IN WALL AND LAMINATE WITH $\frac{1}{2}''$ GYPSUM
6. INSTALL SUSPENDED CEILING IN NEW PUMP CLOSET



DEMOLITION AND FLOOR PLANS

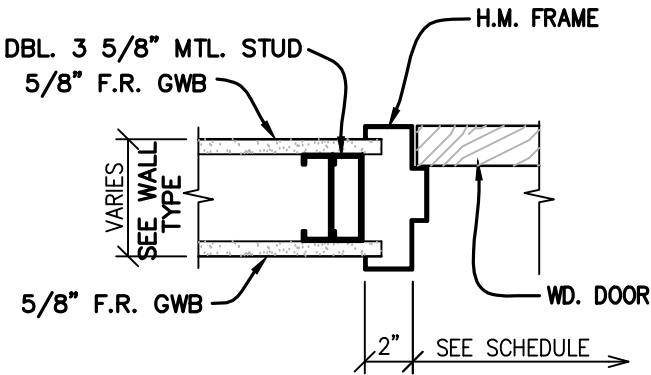
**ADD BOOSTER PUMPS, SPD
 PROJECT # 636-12-811
 OMAHA VA, BUILDING #1**

DWN BY GLS	DRAWING NUMBER 2 OF 7	DATE 13 JAN 2012
SCALE VARIES	SHEET A1.1	

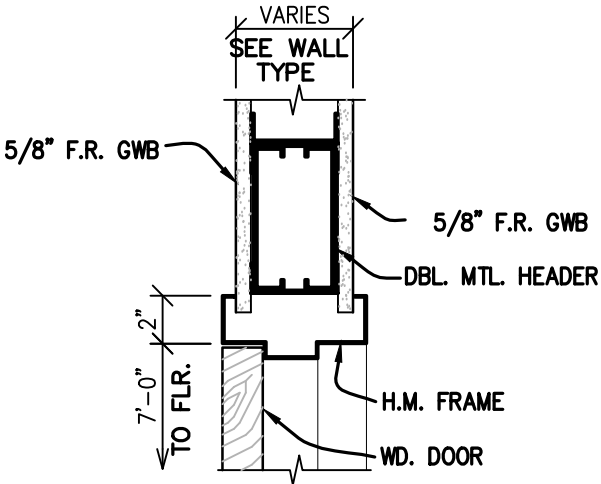
DOOR AND FRAME SCHEDULE											
ROOM NO.	HDWR. NO.	DOOR SIZE	DOOR			LABEL	FRAME			DETAILS	
			TYPE	MAT'L	FINISH		TYPE	MAT'L	FINISH	JAMB	HEAD
8C300A	5G	3'-0" x 7'-0" x 1 3/4"	A	WOOD	WS-1	20 MIN.	1	H.M.	Match exist	1/ 7.1	2/ 7.1

GENERAL NOTES:

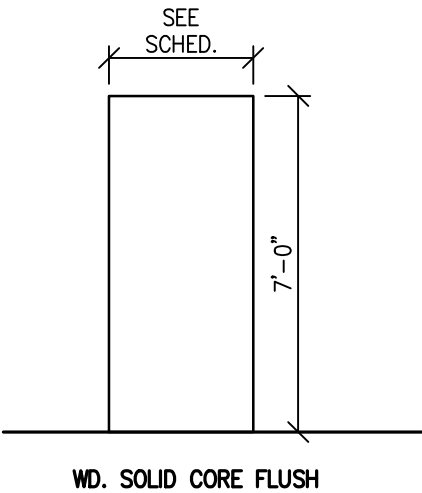
- ALL WORK IN THE HALLWAY AND IN ROOM 8C304 MUST BE DONE ON SATURDAYS OR SUNDAYS UNLESS OTHERWISE APPROVED BY THE COTR.
- ENSURE ALL DOORS TO ROOMS OFF OF CORRIDOOR ARE CLOSED PRIOR TO WORK IN HALLWAY.
- ALL CEILING TILES MUST BE REPLACED AT THE END OF EACH WORK SHIFT
- WORK ARE MUST BE THOUROUGHLY CLEANED AT THE END OF EACH WORK SHIFT TO ALLOW FULL HOSPITAL OPERATIONS



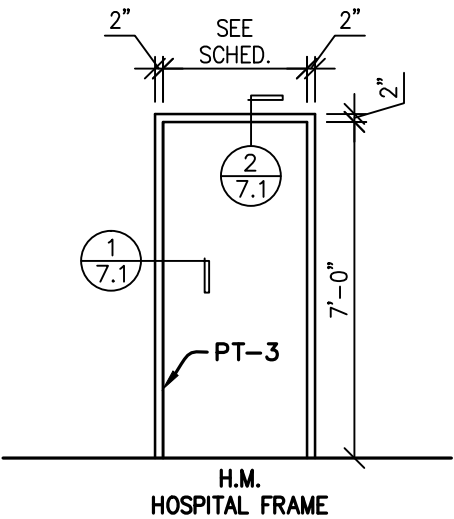
1 DOOR JAMB DETAIL
7.1 SCALE: 1 1/2" = 1'-0"



2 DOOR HEAD DETAIL
7.1 SCALE: 1 1/2" = 1'-0"



A DOOR TYPE
SCALE: 1/4" = 1'-0"



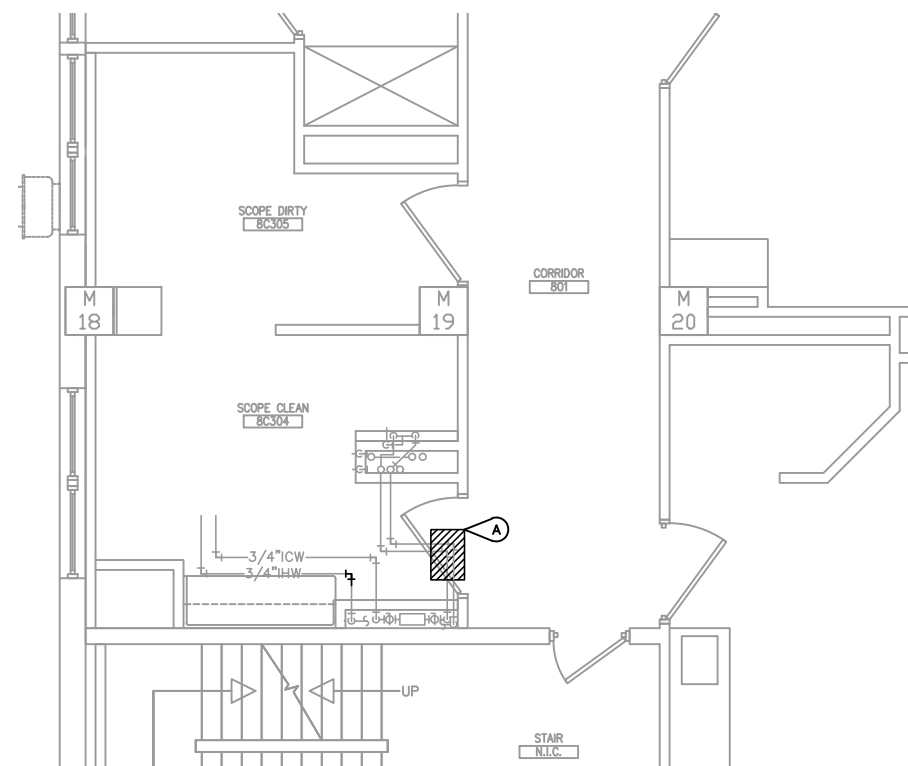
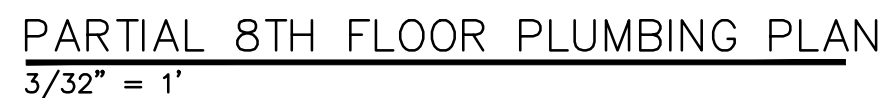
1 FRAME TYPE
SCALE: 1/4" = 1'-0"



DOOR AND FRAME SCHEDULES AND DETAILS

ADD BOOSTER PUMPS, SPD
PROJECT # 636-12-811
OMAHA VA, BUILDING #1

DWN BY GLS	DRAWING NUMBER 3 OF 7	DATE 13 JAN 2012
SCALE VARIES	SHEET A7.1	


$$\overline{1/8'' = 1'}$$


A REMOVE HOT AND COLD WATER LINES SECTION AS REQUIRED TO MAKE NEW CONNECTIONS. CAP OLD LINES ABOVE CEILING. SYSTEM MUST BE FULLY OPERATIONAL MONDAY THROUGH FRIDAY FROM 7:00 AM - 8:00 PM UNLESS PRIOR ARRANGEMENTS HAVE BEEN COORDINATED AND AGREED UPON BY THE COTR.

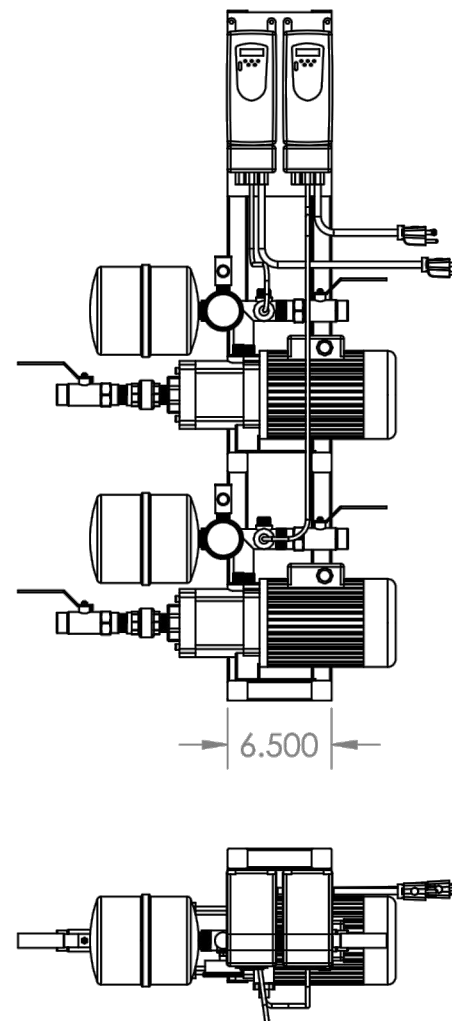
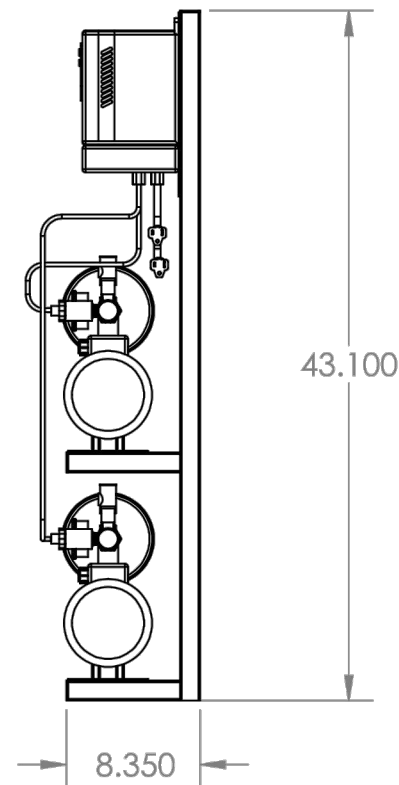
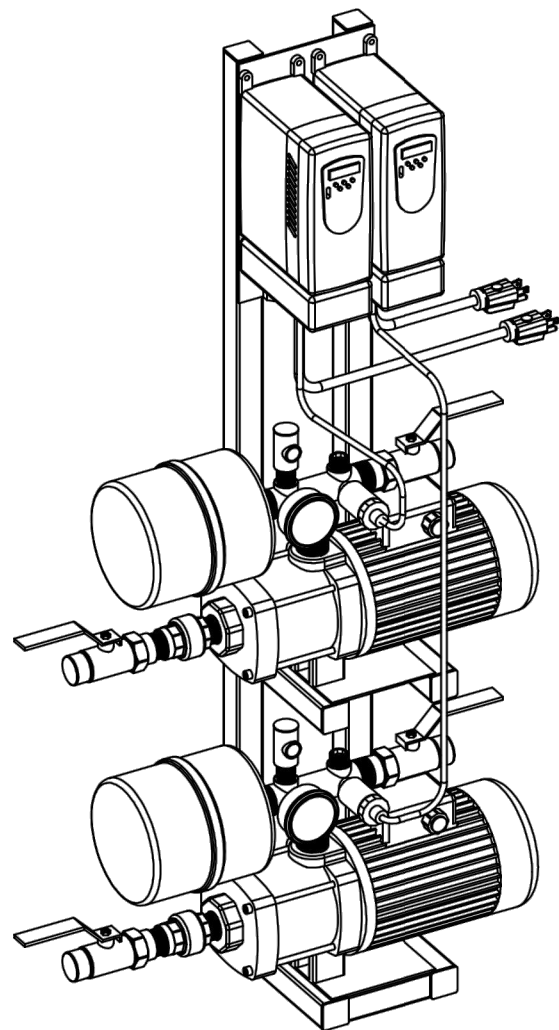
- 1 PROVIDE AND INSTALL A TOWLE WHITNEY VARIABLE FREQUENCY DRIVE BOOSTER PUMP PACKAGE MODEL TW2000-7W-50-SS-MEDICAL OR EQUIVALENT.
- 2 SEE SHEET XXXX FOR BYPASS PLUMBING CONNECTION DETAILS. IF OTHER MANUFACTURES PUMPS ARE USED, INSTALL BYPASS IN ACCORDANCE WITH MANUFACTURES RECOMENDATIONS
- 3 INSTALL NEW WATER LINES AND INSULATE
- 4 CONNECT PUMPS TO NEAREST 1" WATER LINES ABOVE CEILING OR IN WALL

1. ALL WORK IN THE HALLWAY AND IN ROOM 8C304 MUST BE DONE ON SATURDAYS OR SUNDAYS UNLESS OTHERWISE COORDINATED AND APPROVED BY THE COTR. WATER SUPPLY TO SCOPE CLEANING EQUIPMENT MUST BE OPERATIONAL MONDAY THROUGH FRIDAY BETWEEN THE HOURS OF 7:00 AM – 8:00 PM.
2. ENSURE ALL DOORS TO ROOMS OFF OF CORRIDOOR ARE CLOSED PRIOR TO WORK IN HALLWAY.
3. ALL CEILING TILES MUST BE REPLACED AT THE END OF EACH WORK SHIFT
4. WORK AREA MUST BE THOROUGHLY CLEANED AT THE END OF EACH WORK SHIFT TO ALLOW FULL HOSPITAL OPERATIONS



ADD BOOSTER PUMPS, SPD
PROJECT # 636-12-xxx
OMAHA VA, BUILDING #1

DWN BY GLS	DRAWING NUMBER 4 OF 7	DATE 13 JAN 2012
SCALE VARIES		SHEET P1.1



Note: Dimensions are subject to change
Do not use for construction

PROPRIETARY AND CONFIDENTIAL

THE INFORMATION CONTAINED IN THIS
DRAWING IS THE SOLE PROPERTY OF
<INSERT COMPANY NAME HERE>. ANY
REPRODUCTION IN PART OR AS A WHOLE
WITHOUT THE WRITTEN PERMISSION OF
<INSERT COMPANY NAME HERE> IS
PROHIBITED.

		UNLESS OTHERWISE SPECIFIED:		NAME	DATE	VA NEBRASKA	
		DIMENSIONS ARE IN INCHES	DRAWN	VID	1/10	TITLE:	
		TOLERANCES:	CHECKED			TW2000-7W-55-SS	
		FRACTIONAL ±	ENG APPR.			SIZE DWG. NO. REV	
		ANGULAR: MACH ± BEND ±	MFG APPR.			A Final assay	
		TWO PLACE DECIMAL ±	Q.A.			SCALE: 1:12 WEIGHT: SHEET 1 OF 1	
		THREE PLACE DECIMAL ±	COMMENTS:				
		INTERPRET GEOMETRIC TOLERANCING PER:					
		MATERIAL					
		FINISH					
NEXT ASSY	USED ON						
APPLICATION		DO NOT SCALE DRAWING					

GENERAL NOTES:

1. ALL WORK IN THE HALLWAY AND IN ROOM 8C304 MUST BE DONE ON SATURDAYS OR SUNDAYS UNLESS OTHERWISE COORDINATED AND APPROVED BY THE COTR. WATER SUPPLY TO SCOPE CLEANING EQUIPMENT MUST BE OPERATIONAL MONDAY THROUGH FRIDAY BETWEEN THE HOURS OF 7:00 AM – 8:00 PM.
2. ENSURE ALL DOORS TO ROOMS OFF OF CORRIDOOR ARE CLOSED PRIOR TO WORK IN HALLWAY.
3. ALL CEILING TILES MUST BE REPLACED AT THE END OF EACH WORK SHIFT
4. WORK AREA MUST BE THOROUGHLY CLEANED AT THE END OF EACH WORK SHIFT TO ALLOW FULL HOSPITAL OPERATIONS

TOWEL WHITNEY PUMP DETAIL
NOT TO SCALE



PUMP DETAILS

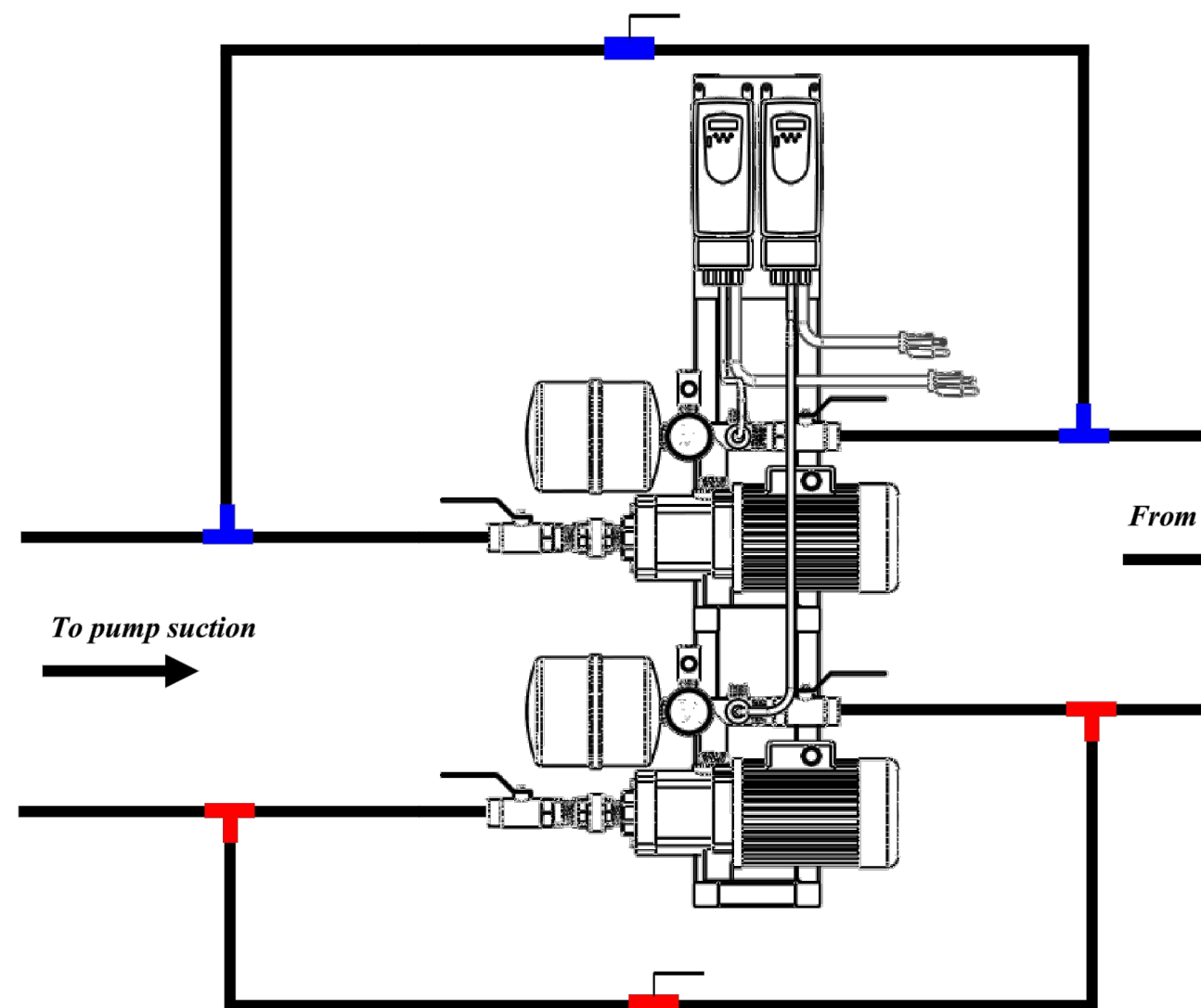
ADD BOOSTER PUMPS, SPD
PROJECT # 636-12-xxx
OMAHA VA, BUILDING #1

DWN BY GLS	DRAWING NUMBER 5 OF 7	DATE 13 JAN 2012
SCALE NOT TO SCALE	SHEET P5.1	



TOWLE WHITNEY

BYPASS SCHEMATIC FOR TW BOOSTER SYSTEM



Schematic for illustration purposes only

*Note: Ball valves
are normally in
closed position*

From pump discharge

To pump suction

LEGEND

Cold Tee
Ball valve

Hot Tee
Ball valve

21 Londonderry Turnpike, Hooksett, NH 03106
Tel: 603-626-7371/1-800-807-9827 Fax: 603-626-7372 www.towle-whitney.com ned@towle-whitney.com

GENERAL NOTES:

1. ALL WORK IN THE HALLWAY AND IN ROOM 8C304 MUST BE DONE ON SATURDAYS OR SUNDAYS UNLESS OTHERWISE COORDINATED AND APPROVED BY THE COTR. WATER SUPPLY TO SCOPE CLEANING EQUIPMENT MUST BE OPERATIONAL MONDAY THROUGH FRIDAY BETWEEN THE HOURS OF 7:00 AM – 8:00 PM
2. ENSURE ALL DOORS TO ROOMS OFF OF CORRIDOR ARE CLOSED PRIOR TO WORK IN HALLWAY.
3. ALL CEILING TILES MUST BE REPLACED AT THE END OF EACH WORK SHIFT
4. WORK AREA MUST BE THOROUGHLY CLEANED AT THE END OF EACH WORK SHIFT TO ALLOW FULL HOSPITAL OPERATIONS

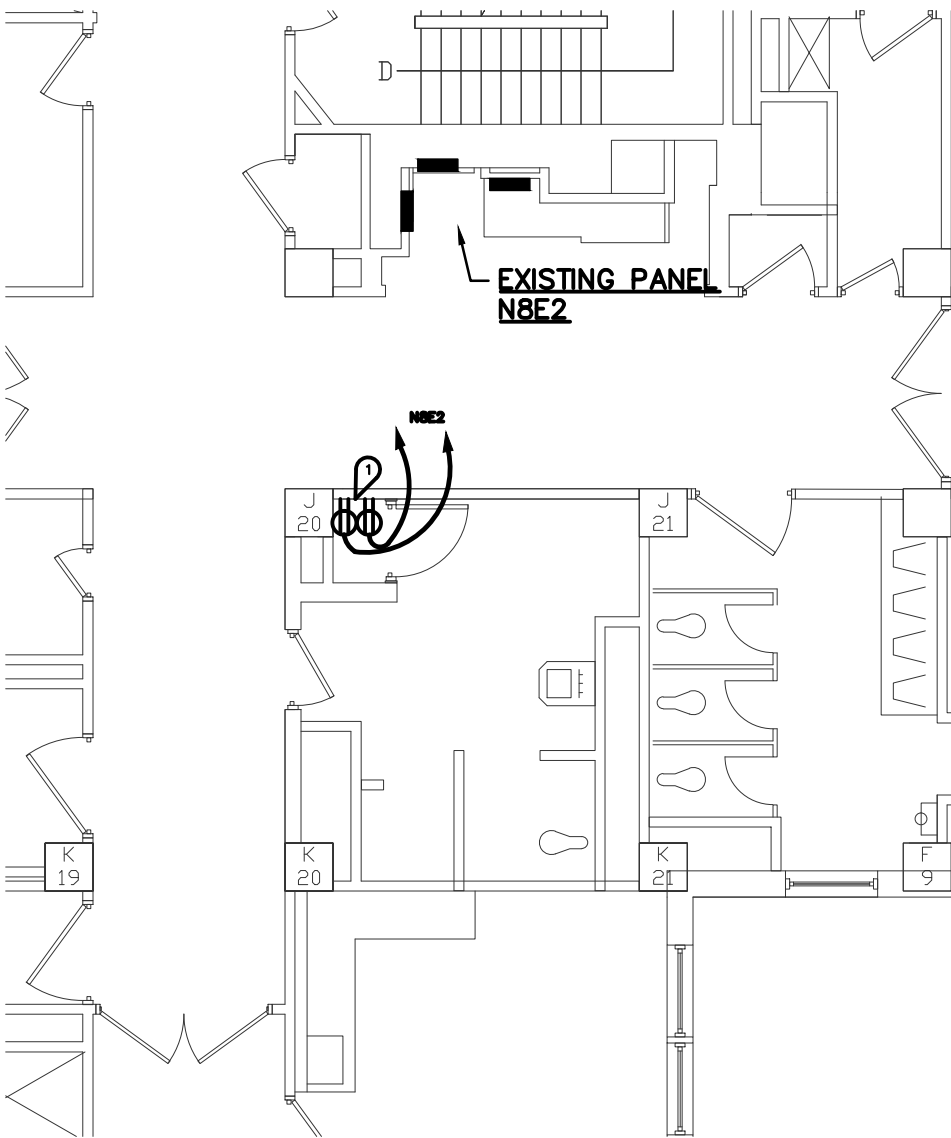
TOWLE WHITNEY BYPASS SCHEMATIC
NOT TO SCALE



PLUMBING DETAILS

**ADD BOOSTER PUMPS, SPD
PROJECT # 636-12-xxx
OMAHA VA, BUILDING #1**

DWN BY GLS	DRAWING NUMBER 6 OF 7	DATE 13 JAN 2012
SCALE NOT TO SCALE	SHEET P5.2	



PARTIAL 8TH FLOOR ELECTRICAL PLAN
 1/8" = 1'

ELECTRICAL KEYNOTES: (◁)

1. INSTALL TWO 15 AMP CIRCUITS AND TWO DUPLEX OUTLETS FOR BOOSTER PUMPS. LABEL OUTLETS "PUMP ONE" AND "PUMP TWO"

GENERAL NOTES:

1. ALL WORK IN THE HALLWAY AND IN ROOM 8C304 MUST BE DONE ON SATURDAYS OR SUNDAYS UNLESS OTHERWISE COORDINATED AND APPROVED BY THE COTR. WATER SUPPLY TO SCOPE CLEANING EQUIPMENT MUST BE OPERATIONAL MONDAY THROUGH FRIDAY BETWEEN THE HOURS OF 7:00 AM – 8:00 PM
2. ENSURE ALL DOORS TO ROOMS OFF OF CORRIDOOR ARE CLOSED PRIOR TO WORK IN HALLWAY.
3. ALL CEILING TILES MUST BE REPLACED AT THE END OF EACH WORK SHIFT
4. WORK AREA MUST BE THOROUGHLY CLEANED AT THE END OF EACH WORK SHIFT TO ALLOW FULL HOSPITAL OPERATIONS



ELECTRICAL PLAN

ADD BOOSTER PUMPS, SPD
 PROJECT # 636-12-xxx
 OMAHA VA, BUILDING #1

DWN BY GLS	DRAWING NUMBER 7 OF 7	DATE 13 JAN 2012
SCALE NOT TO SCALE	SHEET E1.1	