



**ASBESTOS-CONTAINING MATERIALS SURVEY
VETERANS AFFAIRS MEDICAL CENTER
4150 CLEMENT STREET
BUILDING 018
SAN FRANCISCO, CALIFORNIA**

Submitted to:

Floyd Devenbeck, PE
Engineer
Veterans Affairs Medical Center
4150 Clement Street
San Francisco, California 94121

Prepared By:

A handwritten signature in blue ink, appearing to read 'M.S. Benefield'.

Michael S. Benefield, PE, CAC #06-3938
Senior Project Manager

Reviewed By:

A handwritten signature in black ink, appearing to read 'Dario A. Oakley'.

Dario A. Oakley, CHMM, REA
Asbestos and Lead Program Manager

IHI Project No. 09B-2173

May 12, 2010

**Asbestos-Containing Materials Survey
Veterans Affairs Medical Center
4150 Clement Street
Building 018
San Francisco, California**

Executive Summary

An asbestos-containing materials survey was conducted by IHI Environmental (IHI), of Emeryville, California, of the interior and exterior of Building 018 at the Department of Veterans Affairs Medical Center (VAMC) in San Francisco, California. The survey was conducted in response to "Contract Number GS-10F-0446R," dated June 30, 2009, and under the terms and conditions of the "Revised Scope of Work Project 662-09-007 Asbestos Survey and Evaluation," dated April 30, 2009. At the direction of the VAMC, the survey did not include the assessment or sampling of roofing system materials, laboratory countertops, or materials associated with fume hoods. The survey was conducted for use in ongoing operations and maintenance, and for planning potential future renovations. The field survey of this building was conducted on August 12 through August 12, 2009 by State-certified personnel from IHI.

The following general types and estimated quantities of asbestos-containing materials were identified in Building 018.

Pipe Insulation	504 Lin. Ft.
Pipe Fitting Insulation	120 Units
Flooring Mastic	456 Sq. Ft.
Vinyl Floor Tiles	256 Sq. Ft.
Stair Tread Adhesive	100 Sq. Ft.
Stucco	11,000 Sq. Ft.
Ceramic Floor Tile Adhesive and Grout*	392 Sq. Ft.

* Material was not sampled and is assumed to contain asbestos

Comments and Recommendations

1. Asbestos-containing materials in the building should be removed prior to the demolition of the building or any renovation that might otherwise disturb them. Friable asbestos-containing materials, or materials likely to become friable during demolition, must be removed in accordance with regulations promulgated by the State of California Division of Occupational Safety and Health (Cal/OSHA) and the Bay Area Air Quality Management District (BAAQMD). Asbestos abatement must be conducted by a licensed, registered asbestos abatement contractor. Waste generated from asbestos abatement work must be properly packaged, labeled, transported, and disposed.
2. Asbestos-containing materials that remain in the building should be integrated into, and managed in accordance with, the VAMC's Asbestos Operations and Maintenance Program. Damaged ACM should be repaired or removed to prevent the release of asbestos fibers into the air.
3. At the request of the VAMC, materials associated with fume hoods, laboratory countertops, and roofing systems were not sampled or included in our reporting. Suspect materials associated with these systems must be assumed to contain asbestos until and unless proven to be otherwise.
4. In accordance with applicable regulations, employees, visitors, and/or contractors entering this building should be notified of the presence, location, and quantities of its asbestos-containing materials, as well as lead-containing paints and/or other chemicals listed under Proposition 65.
5. Workers engaged in asbestos-related construction or maintenance activities in this building should proceed in accordance the VAMC's Asbestos Operations and Maintenance Program, which requires the use of appropriate personal protective equipment (PPE). The need for respiratory protection should be evaluated by a Competent Person (as defined by Cal/OSHA) and may require, at a minimum, a

half-face air purifying respirator with P-100 filter cartridges. Other PPE may include disposable clothing, work gloves, work boots, eye protection and hardhats.

The Executive Summary of this report is not intended to be read as a stand-alone document. This Executive Summary has been prepared for, and is provided to, the San Francisco Department of Veterans Affairs Medical Center for its exclusive use as a component of a more detailed and complete building survey report. The reader should review the complete information provided in the full body of the accompanying text, as well as the laboratory reports and other supporting project documentation. Any interpretation, use, extrapolation and/or conclusions resulting from the limited information contained in this Executive Summary are the responsibility of the reader. Any other release or re-use of this report shall be without risk or liability to IHI Environmental. This report shall not be reproduced, except in its entirety, without the expressed written permission of IHI Environmental.

Table of Contents

1.0	INTRODUCTION.....	1
2.0	BUILDING DESCRIPTION.....	1
3.0	ASBESTOS MATERIALS SURVEY	2
3.1	Building Survey.....	2
3.2	Bulk Sample Collection.....	4
3.3	Sample Analysis	5
3.4	Bulk Sample Analytical Results	6
3.5	Asbestos-Containing Materials	6
3.6	Inaccessible Areas / Materials	8
3.7	Abatement Cost Estimates	8
3.8	Response Options	10
4.0	COMMENTS AND RECOMMENDATIONS.....	11
5.0	PROJECT LIMITATIONS	13

Appendices

- A Summary of Asbestos-Containing Materials
- B Summary of Non-Asbestos Containing Materials
- C Detail Report of Each Room/Space With Identified Suspect Materials
- D Detail Report of Each Suspect Material's Locations
- E Samples Grouped By Material Number
- F Laboratory Analytical Reports
- G Sample and Material Location Drawings

**Asbestos-Containing Materials Survey
Veterans Affairs Medical Center
4150 Clement Street
Building 018
San Francisco, California**

1.0 INTRODUCTION

An asbestos-containing materials survey was conducted by IHI Environmental (IHI), of Emeryville, California, of the interior and exterior of Building 018 at the Department of Veterans Affairs Medical Center (VAMC) in San Francisco, California. The survey was conducted in response to "Contract Number GS-10F-0446R," dated June 30, 2009, and under the terms and conditions of the "Revised Scope of Work Project 662-09-007 Asbestos Survey and Evaluation," dated April 30, 2009. At the direction of the VAMC, the survey did not include the assessment or sampling of roofing system materials, laboratory countertops, or materials associated with fume hoods. The survey was conducted for use in ongoing operations and maintenance, and for planning potential future renovations. The field survey of this building was conducted on August 12 through August 12, 2009 by State-certified personnel from IHI.

The survey was conducted by IHI employees certified by the California State Division of Occupational Safety and Health (Cal/OSHA) as either Certified Asbestos Consultants (CAC) or Site Surveillance Technicians (SST). The following employees conducted the field survey: Michael Benefield (CAC #06-3938), and Gregory Marszal (SST# 96-1975). This survey project was managed by Michael Benefield, PE, Senior Project Manager (CAC# 06-3938) with IHI.

2.0 BUILDING DESCRIPTION

Building 018 is a reinforced concrete structure comprising approximately 9,800 square feet. The building has three stories including a basement. It is a former residence. It is currently used as offices.

Typical interior finishes include plaster walls; plaster ceilings, carpet; and vinyl baseboards.. The HVAC system consists of raidators in rooms throughout the building.

3.0 ASBESTOS MATERIALS SURVEY

3.1 Building Survey

This survey incorporated data from an existing survey of the building. The existing report is entitled "Asbestos-Containing Material Field Survey Report Building 18" prepared by IHI and dated October 10, 2003. (the 2003 survey). When materials identified in the 2003 survey were observed to still be present and were readily identifiable during the course of this survey, the analytical data from the 2003 survey was re-used in the preparation of this report. Sample data that has been re-used is identified in Appendix B and C of this report. Laboratory analytical reports from the 2003 survey are included in Appendix F of this report. Material locations and quantities reported in the 2003 survey were not used in the preparation of this report. All material quantity and location data in this report was gathered during the course of this field survey. Any material observed during the course of this survey that was not readily identifiable as one of materials already characterized in the 2003 survey was treated as a newly discovered material and was sampled accordingly.

The interior and exterior areas of the buildings were visually assessed for building materials judged to potentially contain asbestos (suspect materials). Suspected asbestos-containing materials (ACM) were touched to determine friability, where accessible.

Suspect materials were evaluated and assessed in terms of homogeneous areas. A homogeneous area is defined as a single material, uniform in texture and appearance, thought to have been installed at one time, and unlikely to consist of more than one type or formulation of material.

In each room that IHI surveyed, each wall was inspected to determine the wall material. If the wall or portion of the wall consisted of gypsum wallboard system, one or more small cuts were made in the surface to observe if a skim coat is present. Where carpet is present, the carpet was pulled up (either in a corner or at the threshold) to look for other flooring materials or residual mastic from an older flooring installation. IHI did not typically check under the carpet in multiple locations per room.

Sample locations were patched using a quick drying patching spackle or quick drying and paintable silicon caulk/adhesive. The silicon caulk/adhesive was occasionally used to re-adhere flooring, baseboard, or other items to the substrate after sampling or inspection.

In each room, IHI used estimating techniques (such as pacing or counting standard-sized building elements) to estimate the dimensions of the room. Those dimensions were used to calculate approximate quantities of the materials in the room. Wall material quantities were calculated by multiplying the perimeter of the room by the height and then subtracting twenty square feet for each observed door. Floor and ceiling material quantities were calculated by multiplying the width by the length of the room. Materials that were present only in portions of a room were estimated by the surveyors.

The VAMC supplied IHI with CAD floor plan drawings of the building. These drawings were field verified for general accuracy of room configuration. When the drawings did not match field observations, the observed configuration was manually modified on the printed plan drawings and the CAD drawings were subsequently modified to match the notations. The modified drawings were used as a basis for the sample and material location drawings which are included in Appendix G of this report. The modifications were made by personnel with no architectural training and should be assumed to be approximations of observed wall layouts.

At the direction of the VAMC, IHI used the room number designations that were posted on or near the entry to each room. In the absence of a posted room number, IHI used

the room number found on the floor plan drawings, and, in the absence of either, IHI designated a number or description and added that designation to the floor plan drawings provided in Appendix G. These room numbers are shown on the sample and material location drawings and in the sample and material location tables of this report.

3.2 Bulk Sample Collection

A total of 13 bulk samples were collected from the building during this survey. The actual number of samples analyzed and, hence, the number of analytical results contained in the attached laboratory report, may be fewer than this number. Generally, this is due to the laboratory not continuing to analyze all of a set of homogeneous material samples once a positive result is obtained for that sample set. This “stop at first positive” approach to sample analysis allows for the determination as to whether or not a homogeneous material is asbestos-containing (i.e., contains greater than 1% asbestos) without requiring the redundant analysis of additional samples of the same material. These samples were collected in addition to those collected during the 2003 survey. Samples were collected from accessible homogeneous areas of suspected ACM for subsequent laboratory analysis to determine actual asbestos content. Sample collection was conducted in general accordance with the Bay Area Air Quality Management District’s (BAAQMD) Regulation 11 Rule 2, as pertains to building inspection for asbestos. BAAQMD implements the federal National Emission Standards for Hazardous Air Pollutants (NESHAP) requirements for asbestos building inspection prior to demolition or renovation activities.

The NESHAP regulation mandates that buildings be “thoroughly inspected” for the presence of regulated asbestos-containing materials (RACM) prior to demolition (or renovation that would disturb RACM). BAAQMD’s Regulation 11 Rule 2 stipulates that suspect building materials that will be disturbed by planned demolition or renovation activities be sampled and analyzed in accordance with the methodologies set forth in the Asbestos Hazard Emergency Response Act (AHERA) regulations, or be assumed to be asbestos-containing. The AHERA regulations are published in the Code of Federal

Regulations, Title 40, Part 763 (40 CFR 763). The sampling criteria are presented in 40 CFR 763.86.

Since the building was occupied at the time of this survey, deconstructive sampling methods, which might have revealed suspect materials in otherwise inaccessible locations, were avoided. At the request of the VAMC, IHI did not collect samples of suspect materials in occupied portions of the building when sampling would likely degrade the material's function or appearance. Likewise, suspect materials in inaccessible locations, if present, have also not been characterized by this survey. At the request of the VAMC, IHI did not collect samples of, or record in our data, materials associated with fume hoods, laboratory countertops, or the roofing systems.

With the exception of the materials noted above as being excluded from our scope of work, other suspect materials may have been identified during this survey which have not been sampled, and have been reported herein as "assumed" asbestos-containing materials. Assumed materials are designated "POS" in the tables in Appendices A, B, C, and D of this report. Materials that were identified as asbestos-containing based on analytical results from the 2003 survey are designated "POS" in the tables in Appendices A, B, C, and D of this report. Analytical results from the 2003 data are reported in the material description field in the same data tables. Any other suspect materials that have not been identified or characterized for asbestos content, if encountered, should be managed as ACM until and unless sampling and analysis conducted in accordance with BAAQMD requirements reveals this to be otherwise. The identification and analysis of such materials should be conducted as the materials are encountered and prior to their disturbance. Access to currently inaccessible locations (e.g., sealed ceiling or wall spaces, and layers under sub-floors) will require the demolition of concealing materials or strata.

3.3 Sample Analysis

Bulk samples were analyzed using polarized light microscopy (PLM) in accordance with the EPA Method No. 600/R-93-116. PLM is the EPA-recommended analytical method

for detecting asbestos in building materials. Asbestos concentrations resulting from this analytical methodology are reported in percentages of asbestos present, based upon visual estimation. Samples were analyzed by Asbestos TEM Laboratories, Inc. in Berkeley, California. ATEM is accredited by the National Institute of Standards and Technology - National Voluntary Laboratory Accreditation Program for bulk asbestos sample analysis.

3.4 Bulk Sample Analytical Results

Appendix E of this report contains a list of samples, sample locations, and analytical results for each of the samples. Samples are listed in order of homogeneous area number. Appendix G of this report contains plan drawings of the building showing bulk sample locations. Copies of the laboratory analytical reports for the samples collected in this building are included in Appendix F of this report.

3.5 Asbestos-Containing Materials

A homogeneous area of a building material is considered to be an ACM if the laboratory analysis shows the material to contain greater than 1% asbestos. Based on the results of our survey and sample collection/analysis, the following categories and estimated quantities of ACM were identified in this building.

Pipe Insulation	504 Lin. Ft.
Pipe Fitting Insulation	120 Units
Flooring Mastic	456 Sq. Ft.
Vinyl Floor Tiles	256 Sq. Ft.
Stair Tread Adhesive	100 Sq. Ft.
Stucco	11,000 Sq. Ft.
Ceramic Floor Tile Adhesive and Grout*	392 Sq. Ft.

* Material was not sampled and is assumed to contain asbestos

The above summary is a general compilation of the distinct types of materials revealed or assumed to contain asbestos in this building. Tables summarizing all sampling results, as well as the original laboratory analytical reports, are included in the appendices of this report. Lab results reporting the detectable presence of asbestos in specifically sampled materials should be assumed to be representative of all similar materials encountered in this building, whether tested or untested.

Appendix A of this report contains a list of each identified ACM, its total estimated quantity, and the estimated cost to remove it. Appendix B of this report contains a summary of homogeneous materials that were reported not to contain asbestos. Appendix C of this report contains a room-by-room listing of each suspect material observed, its asbestos content (if any), the estimated quantity of each suspect material, and its observed condition. The table in Appendix C could be useful when planning a renovation in a particular space. Appendix D of this report contains a detailed list of each material, showing each of the rooms in which that material was identified. The table in Appendix D could be useful if one needed to know all of the locations of a particular ACM. Appendix G contains plan drawings of the building, showing locations of identified ACM.

The NESHAP and AHERA regulations define ACM as material containing more than 1% asbestos; materials containing less than 1% asbestos are not ACM under NESHAP, nor AHERA. However, Cal/OSHA worker protection regulations define asbestos-containing construction material (ACCM) to be any material containing greater than 0.1% asbestos by weight. Cal/OSHA defines four classes of asbestos-related construction work (Class I, Class II, Class III, and Class IV) which are regulated under the Construction Safety Orders for Asbestos (8CCR §1529, et. seq.). These work classes and their respective requirements pertain to materials containing more than 1% asbestos. Exposure to materials containing less than 1% asbestos is still regulated by Cal/OSHA, but the handling and management of such materials are not subject to many of the requirements of this Cal/OSHA standard.

NESHAP also specifies that if the asbestos content of a sampled material is reported by the laboratory to be less than 10%, the asbestos content of the sample must either be verified by point-counting analysis, or assumed to contain more than 1% asbestos and be managed as an ACM. No samples were reanalyzed by PLM point-count analysis. All materials reported to have detectable concentrations of asbestos must be assumed to be ACM and handled accordingly until additional testing or analysis is conducted or until other information confirming an absence of asbestos is made available.

3.6 Inaccessible Areas / Materials

Most areas of the building were accessed during the survey. The following areas and/or possible materials were inaccessible during the asbestos survey and were not evaluated:

Inaccessible Locations

B3

Inaccessible Materials

- Vapor barriers under slab (if present); and
- TSI in wall cavities.

Any uncharacterized suspect material can be evaluated prior to its disturbance. Access to inaccessible locations (e.g., sealed ceiling or wall spaces, and layers under sub-floors) may require the destruction of concealing material(s) or strata. Suspect materials which have not been characterized in this report, if encountered, should be treated as ACM until and unless proven to be otherwise.

3.7 Abatement Cost Estimates

IHI periodically gathers current unit-rate costs of removal for various asbestos-containing materials from several California-licensed asbestos abatement contractors. Those unit-rate removal costs are then averaged together by specific material to yield

an average unit-rate of removal for various common asbestos-containing materials (ACM). The contractor's individual unit-rate costs typically assume that all reported quantities of an identified material(s) will be removed in one mobilization phase, and that the quantity of any given material is large enough to avoid unit cost increases for small quantities.

The abatement cost estimates we provide to clients are based on the average of these contractor unit-rate costs and the quantities of ACMs identified in our survey. The estimated quantity of each known ACM reported to be present in a building is multiplied by the average unit-rate cost for that material to produce our final abatement cost estimate for each specific material. The sum of the abatement costs estimated for all the ACMs reported in a room or building is presented as our abatement cost estimate for that room or building. Abatement cost estimates for each ACM in the building can be found in Appendix A of this report, and abatement cost estimates for the ACMs in each room can be found in Appendix C of this report.

In IHI's opinion, this method of abatement cost estimation, while not ideal, produces a useful starting point, or "rough order-of-magnitude," for approximating future abatement costs. However, we recognize it does not consider several important factors and, consequently, does not render a well-defined estimate of what actual abatement costs will be. Actual costs to remove the identified ACM will be influenced by several additional factors, including, but not necessarily limited to, final scope of abatement work; actual quantity of materials to be removed; choice of abatement contractor; prevailing market conditions; the number of required mobilizations; site-specific limitations; and/or the discovery of hidden conditions. Therefore, we caution against basing any abatement design or construction budget planning on this preliminary abatement cost estimate. A more reliable method of determining an accurate range of costs to abate the reported hazardous materials would be to request bids for a defined scope of work from several licensed and registered abatement contractors.

3.8 Response Options

ACM identified in this survey should be integrated into, and managed in accordance with, the VAMC's Asbestos Operations and Maintenance Program. Any ACM identified in this report as being in a damaged condition should be repaired or removed to prevent the release of asbestos fibers into the air.

Certain materials may have been assumed to contain asbestos during the course of this survey. Such assumptions may have been made due to material inaccessibility, or an inability to sample a material without causing significant damage to it, or where sampling would have unavoidably created a potential asbestos hazard for building occupants. These materials are indicated in the tables of the Appendices by a "POS" in the Asbestos Result column. These materials must either be sampled to evaluate their asbestos content, or be managed as ACM. Materials which contain asbestos at a concentration greater than 1.0% are regulated by Fed/OSHA, Cal/OSHA, Fed/EPA, and Cal/EPA. As required by federal and local regulations, these materials must be removed by a licensed and qualified asbestos abatement contractor prior to the start of renovation or demolition activities which would disturb them. Removal or disturbance of asbestos-containing materials should be specifically addressed in construction contract documents/drawings and monitored to ensure compliance with applicable regulations.

Regulated asbestos-containing materials (RACM) must be removed by a licensed and registered asbestos abatement contractor prior to the start of any demolition or renovation activities that would disturb them. According to current NESHAP regulations, friable¹ ACM (and Category I or II non-friable ACM that may become friable during renovation or demolition) are to be considered RACM. Whether a non-friable material will be rendered friable during construction or demolition depends upon the work method(s) utilized. Typical renovation or demolition practices could reasonably be expected to render friable those non-friable ACMs identified in this report.

¹ "Friable" materials are typically those that when dry can be crushed, crumbled, pulverized or reduced to a powder by hand pressure alone. Some regulations will consider materials that are rendered to a finely divided powder by natural or mechanical means to be comparable to a "friable" condition.

Certain reported asbestos-containing materials revealed during this survey were judged by IHI to be friable in their current condition. In addition, disturbance of reported non-friable ACMs in the course of building demolition or renovation could reasonably be expected to render them friable. IHI's opinion of each asbestos-containing material's NESHAP category is indicated in the data tables located in the appendices of this report. BAAQMD should be consulted for a definitive ruling on categorization (RACM, Category I non-friable, or Category II non-friable) of specific ACMs reported herein.

Asbestos-containing waste resulting from the removal of non-friable asbestos-containing materials would generally not be subject to management as a hazardous waste (depending on the work practices utilized), as long as the ACM were removed in a manner which did not render it friable. Friable ACM must be labeled, manifested, transported, and disposed of as a California ("non-RCRA") hazardous waste. All waste generated from asbestos abatement must be properly packaged, labeled, transported, and disposed.

Removal or disturbance of ACM or ACCM should be conducted in compliance with the work practices and exposure monitoring requirements of Cal/OSHA's Construction Safety Orders for Asbestos (8 CCR §1529, et. seq.) and the BAAQMD's Regulation 11 Rule 2. Additional regulatory requirements pertaining to waste management, work notifications, contractor registration and licensing, and coordination with local agencies also apply to asbestos-related construction work.

4.0 COMMENTS AND RECOMMENDATIONS

1. Asbestos-containing materials in the building should be removed prior to the demolition of the building or any renovation activities that might otherwise disturb them. Friable asbestos-containing materials, or materials likely to become friable during demolition, must be removed in accordance with regulations promulgated by the State of California Division of Occupational Safety and Health (Cal/OSHA) and the Bay Area Air Quality Management District (BAAQMD). Asbestos

abatement must be conducted by a licensed, registered asbestos abatement contractor. Waste generated from asbestos abatement work must be properly packaged, labeled, transported, and disposed.

2. Asbestos-containing materials that remain in the building should be integrated into, and managed in accordance with, the VAMC's Asbestos Operations and Maintenance Program. Damaged ACM should be repaired or removed to prevent the release of asbestos fibers into the air.
3. At the request of the VAMC, materials associated with fume hoods, laboratory countertops, and roofing systems were not sampled or included in our reporting. Suspect materials associated with these systems must be assumed to contain asbestos until and unless proven to be otherwise.
4. In accordance with applicable regulations, employees, visitors, and/or contractors entering this building should be notified of the presence, location, and quantities of its asbestos-containing materials, as well as lead-containing paints and/or other chemicals listed under Proposition 65.
5. Workers engaged in asbestos-related construction or maintenance activities in this building should proceed in accordance with the VAMC's Asbestos Operations and Maintenance Program, which requires the use of appropriate personal protective equipment (PPE). The need for respiratory protection should be evaluated by a Competent Person (as defined by Cal/OSHA) and may require, at a minimum, a half-face air purifying respirator with P-100 filter cartridges. Other PPE may include disposable clothing, work gloves, work boots, eye protection and hardhats.

5.0 PROJECT LIMITATIONS

This Project was performed using, as a minimum, practices consistent with standards acceptable within the industry at this time, and a level of diligence typically exercised by industrial hygiene consultants performing similar services.

The procedures used in this investigation attempt to establish a balance between the competing goals of limiting investigative and reporting costs and time, and reducing the uncertainty about unknown conditions. Therefore, because the findings of this report were derived from the scope, costs, time, and other limitations, the conclusions should not be construed as a guarantee that all environmental or occupational hazards have been identified and fully evaluated. Where sample collection and testing have been performed, IHI's professional opinions are based in part on the interpretation of data from discrete sampling locations that may not represent conditions at non-sampled locations. IHI assumes no responsibility for omissions or errors resulting from inaccurate information, or data, provided by sources outside of IHI or from omissions or errors in public records.

Furthermore, it is emphasized that the final decision on how much risk to accept always remains with the client since IHI is not in a position to fully understand all of the client's needs. Clients with a greater aversion to risk may want to take additional actions while others, with less aversion to risk, may want to take no further action.

Appendix A

Summary of Asbestos-Containing Materials

Summary Of Asbestos-Containing Materials

POSITIVE (>0.1%) ANALYTICAL RESULTS

Project Name:

Building 018

Survey Segment:

A: Building 018

Address:

4150 Clement St., San Francisco, CA 94121

<u>Homogeneous</u> <u>Area #</u>	<u>Asbestos Result</u>	<u>Material Description</u>	<u>Quantity /</u> <u>(Est. Removal Cost)</u>	<u>Type</u>	<u>Condition</u>	<u>DamageType</u>	<u>Friability</u>	<u>Exposure</u> <u>Potential</u>	<u>Hazard</u> <u>Assessment</u>
202	POS	Pipe Insulation Canvas Wrapped labeled as ACM	440 Lin.Ft (\$5,914) @ \$13.44	MISC	Good	None	Friable	Low	7
203	POS	Pipe Fitting Insulation Canvas Wrapped Mudded labeled as ACM	120 Each (\$2,380) @ \$19.83	MISC	Good	None	Non-Friable	Low	X
205	POS	Vinyl Floor Tile 12x12 Tan w/ White Streaks (old mtl # 205) 5-10% Chrysotile in mastic	100 Sq.Ft. (\$260) @ \$2.60	MISC	Good	None	Non-Friable	Low	X
206	POS	Vinyl Sheet Flooring Grey (old mtl # 206) 1-5% Chrysotile in brown mastic	50 Sq.Ft. (\$193) @ \$3.86	MISC	Good	None	Friable	Low	7
210	POS	Pipe Insulation Canvas Wrapped (old mtl # 210) 1-5% Chrysotile	64 Lin.Ft (\$860) @ \$13.44	MISC	Good	None	Friable	Low	7
211	POS	Ceramic Floor Tile Adhesive and Grout Brown & Green Tiles	392 Sq.Ft. (\$1,525) @ \$3.89	MISC	Good	None	Non-Friable	Low	X
213	POS	Stucco Tan Exterior (old mtl # 213) <1% Chrysotile	11000 Sq.Ft. (\$70,180) @ \$6.38	SURF	Good	None	Non-Friable	Low	X
219C	5-10% <u>Chrysotile</u>	Vinyl stair tread Tan w/ Yellow Mastic (Split Layer: Mastic-Brown)	100 Sq.Ft. (\$453) * @ \$4.53	MISC	Good	None	Non-Friable	Low	X

Project Name:

Building 018

Survey Segment:

A: Building 018

Address:

4150 Clement St., San Francisco, CA 94121

<u>Homogeneous</u>		<u>Material Description</u>	<u>Quantity / (Est. Removal Cost)</u>	<u>Type</u>	<u>Condition</u>	<u>DamageType</u>	<u>Friability</u>	<u>Exposure Potential</u>	<u>Hazard Assessment</u>
<u>Area #</u>	<u>Asbestos Result</u>								
220B	5-10% <u>Chrysotile</u>	Vinyl Sheet Flooring Green Battleship (<i>Split Layer: Mastic-Brown</i>)	50 Sq.Ft. (\$227) * @ \$4.53	MISC	Good	None	Friable	Low	7
222	5-10% <u>Chrysotile</u>	Vinyl Floor Tile 9x9 Black w/ White & Green Streaks	256 Sq.Ft. (\$625) @ \$2.44	MISC	Good	None	Non-Friable	Low	X
222B	1-5% <u>Chrysotile</u>	Vinyl Floor Tile 9x9 Black w/ White & Green Streaks (<i>Split Layer: Mastic-Black</i>)	256 Sq.Ft. (\$625) * @ \$2.44	MISC	Good	None	Non-Friable	Low	X

Total Reported Materials:	11
----------------------------------	-----------

Appendix B

Summary of Non-Asbestos Containing Materials

Summary Of Materials That Do Not Contain Asbestos

NEGATIVE (<0.1%) ANALYTICAL RESULTS

Project Name:

Building 018

Survey Segment:

A: Building 018

Address:

4150 Clement St., San Francisco, CA 94121

<u>Homogeneous</u> <u>Area #</u>	<u>Asbestos Result</u>	<u>Material Description</u>	<u>Quantity /</u> <u>(Est. Removal Cost)</u>	<u>Type</u>	<u>Condition</u>	<u>DamageType</u>	<u>Friability</u>	<u>Exposure</u> <u>Potential</u>	<u>Hazard</u> <u>Assessment</u>
204	NEG	Plaster Beige Unfinished (old mtl #204)	2478 Sq.Ft.	SURF	Dmgd	Broken	Non-Friable	Low	
207	NEG	Vinyl Floor Tile 12x12 White (old mtl # 207)	35 Sq.Ft.	MISC	Good	None	Non-Friable	Low	
208	NEG	Ceiling Tile, Laid-In 2' x 4' w/ Random Holes (old mtl # 208)	4495 Sq.Ft.	MISC	Good	None	Friable	Low	
209	NEG	Interior Plaster Finish (old mtl # 209)	30222 Sq.Ft.	SURF	Good	None	Non-Friable	Low	
212	ND <u>None Detected</u>	Ceramic Wall Tile Adhesive and Grout Yellow, Blue, & Green Tiles	450 Sq.Ft.	MISC	Good	None	Non-Friable	Low	
214	NEG	Window Glazing (old mtl#24)	600 Lin.Ft	MISC	Good	None	Non-Friable	Low	
215	ND <u>None Detected</u>	Baseboard 4" w/ Beige & Brown Mastic	803 Lin.Ft	MISC	Good	None	Non-Friable	Low	
215B	ND <u>None Detected</u>	Baseboard 4" w/ Beige & Brown Mastic (Split Layer: Mastic-Off-White)	803 Lin.Ft	MISC	Good	None	Non-Friable	Low	
216	ND <u>None Detected</u>	Carpet Adhesive Residual yellow adhesive under tack strip carpet	2253 Sq.Ft.	MISC	Good	None	Non-Friable	Low	

Project Name:

Building 018

Survey Segment:

A: Building 018

Address:

4150 Clement St., San Francisco, CA 94121

<u>Homogeneous</u> <u>Area #</u>	<u>Asbestos Result</u>	<u>Material Description</u>	<u>Quantity /</u> <u>(Est. Removal Cost)</u>	<u>Type</u>	<u>Condition</u>	<u>DamageType</u>	<u>Friability</u>	<u>Exposure</u> <u>Potential</u>	<u>Hazard</u> <u>Assessment</u>
218	ND <u>None Detected</u>	Baseboard 6" Gray w/ White Adhesive	10 Lin.Ft	MISC	Good	None	Non-Friable	Low	
218B	ND <u>None Detected</u>	Baseboard 6" Gray w/ White Adhesive (Split Layer: Mastic-Off-White)	10 Lin.Ft	MISC	Good	None	Non-Friable	Low	
219	ND <u>None Detected</u>	Vinyl stair tread Tan w/ Yellow Mastic	100 Sq.Ft.	MISC	Good	None	Non-Friable	Low	
219B	ND <u>None Detected</u>	Vinyl stair tread Tan w/ Yellow Mastic (Split Layer: Mastic-Yellow)	100 Sq.Ft.	MISC	Good	None	Non-Friable	Low	
220	ND <u>None Detected</u>	Vinyl Sheet Flooring Green Battleship	50 Sq.Ft.	MISC	Good	None	Friable	Low	
221	ND <u>None Detected</u>	Gypsum Wallboard System No Skim Coat	40 Sq.Ft.	MISC	Good	None	Friable	Low	
221B	ND <u>None Detected</u>	Gypsum Wallboard System No Skim Coat (Split Layer: Texture-Off-White)	40 Sq.Ft.	MISC	Good	None	Friable	Low	

Total Reported Materials:	16
----------------------------------	-----------

Appendix C

Detailed Report of Each Room/Space With Identified Suspect Materials

Suspected ACM In Each Surveyed Space/Room

ALL ANALYTICAL RESULTS

Project Name:

Building 018

Survey Segment:

A: Building 018

Address:

4150 Clement St., San Francisco, CA 94121

<u>Homog.</u> <u>Area #</u>	<u>Asbestos</u> <u>Results</u>	<u>Material Description</u>	<u>Quantity</u>	<u>Location / *(Quantity)*</u>	<u>Condition</u>	<u>DamageType</u>	<u>Friability</u>	<u>ExposurePot.</u>
--------------------------------	-----------------------------------	-----------------------------	-----------------	--------------------------------	------------------	-------------------	-------------------	---------------------

1,2: Exterior

				<i>Length:</i> 64 ft. <i>Width:</i> 64 ft. <i>Height:</i> 30 ft. <i>Area:</i> 4096 sq.ft				
				<i>Floor:</i> <i>Wall:</i> <i>Ceiling:</i>				
				<i>Asb Debris:</i> <i>Notes:</i>				
213	POS	Stucco Tan Exterior (old mtl # 213) <1% Chrysotile	11000 Sq.Ft.	Throughout Space: *11000*□	Good	None	Non-Friable	Low
214	NEG	Window Glazing (old mtl#24)	600 Lin.Ft.	Throughout Space: *600*□	Good	None	Non-Friable	Low

1,2: NE Stairwell Hallway

				<i>Length:</i> 17 ft. <i>Width:</i> 7 ft. <i>Height:</i> 28 ft. <i>Area:</i> 119 sq.ft				
				<i>Floor:</i> Carpet <i>Wall:</i> Plaster <i>Ceiling:</i> Plaster				
				<i>Asb Debris:</i> No <i>Notes:</i>				
209	NEG	Interior Plaster Finish (old mtl # 209)	1463 Sq.Ft.	Throughout Space: Walls & Ceiling *1463*□	Good	None	Non-Friable	Low
215	ND	Baseboard None Detected 4" w/ Beige & Brown Mastic	48 Lin.Ft.	Throughout Space: *48*□	Good	None	Non-Friable	Low
215B	ND	Baseboard None Detected 4" w/ Beige & Brown Mastic (Split Layer: Mastic-Off-White)	48 Lin.Ft.	Throughout Space: *48*□	Good	None	Non-Friable	Low
216	ND	Carpet Adhesive None Detected Residual yellow adhesive under tack strip carpet	119 Sq.Ft.	Throughout Space: *119*□	Good	None	Non-Friable	Low

1,2: NW Stairwell Hallway

				<i>Length:</i> 17 ft. <i>Width:</i> 7 ft. <i>Height:</i> 28 ft. <i>Area:</i> 119 sq.ft				
				<i>Floor:</i> Carpet <i>Wall:</i> Plaster <i>Ceiling:</i> Plaster				
				<i>Asb Debris:</i> No <i>Notes:</i>				
209	NEG	Interior Plaster Finish (old mtl # 209)	1463 Sq.Ft.	Throughout Space: Walls & Ceiling *1463*□	Good	None	Non-Friable	Low

Project Name:

Building 018

Survey Segment:

A: Building 018

Address:

4150 Clement St., San Francisco, CA 94121

Homog.	Asbestos	Material Description	Quantity	Location / *(Quantity)*	Condition	DamageType	Friability	ExposurePot.
Area #	Results							
				Length: 11 ft. Width: 7 ft. Height: 28 ft. Area: 77 sq.ft Floor: Carpet Wall: Plaster Ceiling: Plaster Asb Debris: No Notes:				
<u>1,2: SE Stairwell Hallway</u>								
205	POS	Vinyl Floor Tile 12x12 Tan w/ White Streaks (old mtl # 205) 5-10% Chrysotile in mastic	50 Sq.Ft.	Throughout Space: On landings under carpet *50*□	Good	None	Non-Friable	Low
209	NEG	Interior Plaster Finish (old mtl # 209)	1085 Sq.Ft.	Throughout Space: Walls & Ceiling *1085*□	Good	None	Non-Friable	Low
215	ND None Detected	Baseboard 4" w/ Beige & Brown Mastic	3 Lin.Ft.	Throughout Space: *3*□	Good	None	Non-Friable	Low
215B	ND None Detected	Baseboard 4" w/ Beige & Brown Mastic (Split Layer: Mastic-Off-White)	3 Lin.Ft.	Throughout Space: *3*□	Good	None	Non-Friable	Low
216	ND None Detected	Carpet Adhesive Residual yellow adhesive under tack strip carpet	50 Sq.Ft.	Throughout Space: On landings *50*□	Good	None	Non-Friable	Low
219	ND None Detected	Vinyl stair tread Tan w/ Yellow Mastic	50 Sq.Ft.	Throughout Space: *50*□	Good	None	Non-Friable	Low
219B	ND None Detected	Vinyl stair tread Tan w/ Yellow Mastic (Split Layer: Mastic-Yellow)	50 Sq.Ft.	Throughout Space: *50*□	Good	None	Non-Friable	Low
219C	5-10% Chrysotile	Vinyl stair tread Tan w/ Yellow Mastic (Split Layer: Mastic-Brown)	50 Sq.Ft.	Throughout Space: *50*□	Good	None	Non-Friable	Low
220	ND None Detected	Vinyl Sheet Flooring Green Battleship	50 Sq.Ft.	Throughout Space: On landings under carpet and floor tiles. *50*□	Good	None	Friable	Low
220B	5-10% Chrysotile	Vinyl Sheet Flooring Green Battleship (Split Layer: Mastic-Brown)	50 Sq.Ft.	Throughout Space: On landings under carpet and floor tiles. *50*□	Good	None	Friable	Low

Project Name:

Building 018

Survey Segment:

A: Building 018

Address:

4150 Clement St., San Francisco, CA 94121

<u>Homog. Area #</u>	<u>Asbestos Results</u>	<u>Material Description</u>	<u>Quantity</u>	<u>Location / *(Quantity)*</u>	<u>Condition</u>	<u>DamageType</u>	<u>Friability</u>	<u>ExposurePot.</u>
<u>1,2: SW Stairwell Hallway</u>					Length: 11 ft. Width: 7 ft. Height: 28 ft. Area: 77 sq.ft. Floor: Carpet Wall: Plaster Ceiling: Plaster Asb Debris: No Notes:			
205	POS	Vinyl Floor Tile 12x12 Tan w/ White Streaks (old mtl # 205) 5-10% Chrysotile in mastic	50 Sq.Ft.	Throughout Space: On landings under carpet *50*	Good	None	Non-Friable	Low
206	POS	Vinyl Sheet Flooring Grey (old mtl # 206) 1-5% Chrysotile in brown mastic	50 Sq.Ft.	Throughout Space: On landings *50*	Good	None	Friable	Low
207	NEG	Vinyl Floor Tile 12x12 White (old mtl # 207)	35 Sq.Ft.	Throughout Space: @ Entry *35*	Good	None	Non-Friable	Low
209	NEG	Interior Plaster Finish (old mtl # 209)	1085 Sq.Ft.	Throughout Space: Walls & Ceiling *1085*	Good	None	Non-Friable	Low
219	ND None Detected	Vinyl stair tread Tan w/ Yellow Mastic	50 Sq.Ft.	Throughout Space: *50*	Good	None	Non-Friable	Low
219B	ND None Detected	Vinyl stair tread Tan w/ Yellow Mastic (Split Layer: Mastic-Yellow)	50 Sq.Ft.	Throughout Space: *50*	Good	None	Non-Friable	Low
219C	5-10% Chrysotile	Vinyl stair tread Tan w/ Yellow Mastic (Split Layer: Mastic-Brown)	50 Sq.Ft.	Throughout Space: *50*	Good	None	Non-Friable	Low

Project Name:

Building 018

Survey Segment:

A: Building 018

Address:

4150 Clement St., San Francisco, CA 94121

<u>Homog.</u> <u>Area #</u>	<u>Asbestos</u> <u>Results</u>	<u>Material Description</u>	<u>Quantity</u>	<u>Location / *(Quantity)*</u>	<u>Condition</u>	<u>DamageType</u>	<u>Friability</u>	<u>ExposurePot.</u>
<u>1: 101 Office</u>					<i>Length:</i> 22 <i>ft.</i> <i>Width:</i> 16 <i>ft.</i> <i>Height:</i> 10 <i>ft.</i> <i>Area:</i> 352 <i>sq.ft</i> <i>Floor:</i> Carpet <i>Wall:</i> Plaster <i>Ceiling:</i> Ceiling Tile <i>Asb Debris:</i> No <i>Notes:</i>			
208	NEG	Ceiling Tile, Laid-In 2' x 4' w/ Random Holes (old mtl # 208)	352 Sq.Ft.	Throughout Space: *352*□	Good	None	Friable	Low
209	NEG	Interior Plaster Finish (old mtl # 209)	1178 Sq.Ft.	Throughout Space: Walls & Ceiling Above Suspended Ceiling *1178*□	Good	None	Non-Friable	Low
215	ND	Baseboard None Detected 4" w/ Beige & Brown Mastic	76 Lin.Ft.	Throughout Space: *76*□	Good	None	Non-Friable	Low
215B	ND	Baseboard None Detected 4" w/ Beige & Brown Mastic (Split Layer: Mastic-Off-White)	76 Lin.Ft.	Throughout Space: *76*□	Good	None	Non-Friable	Low
216	ND	Carpet Adhesive None Detected Residual yellow adhesive under tack strip carpet	352 Sq.Ft.	Throughout Space: *352*□	Good	None	Non-Friable	Low
<u>1: 102 Closet</u>					<i>Length:</i> 2 <i>ft.</i> <i>Width:</i> 3 <i>ft.</i> <i>Height:</i> 10 <i>ft.</i> <i>Area:</i> 6 <i>sq.ft</i> <i>Floor:</i> Hardwood <i>Wall:</i> Plaster <i>Ceiling:</i> Plaster <i>Asb Debris:</i> No <i>Notes:</i>			
209	NEG	Interior Plaster Finish (old mtl # 209)	89 Sq.Ft.	Throughout Space: *89*□	Good	None	Non-Friable	Low

Project Name:

Building 018

Survey Segment:

A: Building 018

Address:

4150 Clement St., San Francisco, CA 94121

<u>Homog. Area #</u>	<u>Asbestos Results</u>	<u>Material Description</u>	<u>Quantity</u>	<u>Location / *(Quantity)*</u>	<u>Condition</u>	<u>DamageType</u>	<u>Friability</u>	<u>ExposurePot.</u>
----------------------	-------------------------	-----------------------------	-----------------	--------------------------------	------------------	-------------------	-------------------	---------------------

1: 103 Office

Length: 16 ft. Width: 14 ft. Height: 10 ft. Area: 224 sq.ft
 Floor: Carpet Wall: Plaster Ceiling: Ceiling Tile
 Asb Debris: No Notes:

208	NEG	Ceiling Tile, Laid-In 2' x 4' w/ Random Holes (old mtl # 208)	224 Sq.Ft.	Throughout Space: *224*□	Good	None	Friable	Low
209	NEG	Interior Plaster Finish (old mtl # 209)	890 Sq.Ft.	Throughout Space: Walls & Ceiling Above Suspended Ceiling *890*□	Good	None	Non-Friable	Low
215	ND	Baseboard None Detected 4" w/ Beige & Brown Mastic	60 Lin.Ft.	Throughout Space: *60*□	Good	None	Non-Friable	Low
215B	ND	Baseboard None Detected 4" w/ Beige & Brown Mastic (Split Layer: Mastic-Off-White)	60 Lin.Ft.	Throughout Space: *60*□	Good	None	Non-Friable	Low
216	ND	Carpet Adhesive None Detected Residual yellow adhesive under tack strip carpet	224 Sq.Ft.	Throughout Space: *224*□	Good	None	Non-Friable	Low

1: 104 Restroom

Length: 7 ft. Width: 7 ft. Height: 12 ft. Area: 49 sq.ft
 Floor: Ceramic Tile Wall: Plaster Ceiling: Plaster
 Asb Debris: No Notes:

209	NEG	Interior Plaster Finish (old mtl # 209)	351 Sq.Ft.	Throughout Space: Walls & Ceiling *351*□	Good	None	Non-Friable	Low
211	POS	Ceramic Floor Tile Adhesive and Grout Brown & Green Tiles	49 Sq.Ft.	Throughout Space: *49*□	Good	None	Non-Friable	Low
212	ND	Ceramic Wall Tile Adhesive and Grout None Detected Yellow, Blue, & Green Tiles	95 Sq.Ft.	Throughout Space: Wainscot *95*□	Good	None	Non-Friable	Low

Project Name:

Building 018

Survey Segment:

A: Building 018

Address:

4150 Clement St., San Francisco, CA 94121

<u>Homog. Area #</u>	<u>Asbestos Results</u>	<u>Material Description</u>	<u>Quantity</u>	<u>Location / *(Quantity)*</u>	<u>Condition</u>	<u>DamageType</u>	<u>Friability</u>	<u>ExposurePot.</u>
<u>1: 105 Closet</u>					Length: 3 ft. Width: 2 ft. Height: 10 ft. Area: 6 sq.ft. Floor: Hardwood Wall: Plaster Ceiling: Plaster Asb Debris: No Notes:			
209	NEG	Interior Plaster Finish (old mtl # 209)	89 Sq.Ft.	Throughout Space: *89*□	Good	None	Non-Friable	Low
210	POS	Pipe Insulation Canvas Wrapped (old mtl # 210) 1-5% Chrysotile	24 Lin.Ft.	Throughout Space: Behind wall *24*□	Good	None	Friable	Low
<u>1: 106 Restroom</u>					Length: 7 ft. Width: 7 ft. Height: 12 ft. Area: 49 sq.ft. Floor: Ceramic Tile Wall: Plaster Ceiling: Plaster Asb Debris: No Notes:			
209	NEG	Interior Plaster Finish (old mtl # 209)	351 Sq.Ft.	Throughout Space: Walls & Ceiling *351*□	Good	None	Non-Friable	Low
211	POS	Ceramic Floor Tile Adhesive and Grout Brown & Green Tiles	49 Sq.Ft.	Throughout Space: Walls & Ceiling *49*□	Good	None	Non-Friable	Low
212	ND None Detected	Ceramic Wall Tile Adhesive and Grout Yellow, Blue, & Green Tiles	15 Sq.Ft.	Throughout Space: Baseboard *15*□	Good	None	Non-Friable	Low
218	ND None Detected	Baseboard 6" Gray w/ White Adhesive	10 Lin.Ft.	Throughout Space: *10*□	Good	None	Non-Friable	Low
218B	ND None Detected	Baseboard 6" Gray w/ White Adhesive (Split Layer: Mastic-Off-White)	10 Lin.Ft.	Throughout Space: *10*□	Good	None	Non-Friable	Low

Project Name:

Building 018

Survey Segment:

A: Building 018

Address:

4150 Clement St., San Francisco, CA 94121

<u>Homog.</u> <u>Area #</u>	<u>Asbestos</u> <u>Results</u>	<u>Material Description</u>	<u>Quantity</u>	<u>Location / *(Quantity)*</u>	<u>Condition</u>	<u>DamageType</u>	<u>Friability</u>	<u>ExposurePot.</u>
<u>1: 107 Office</u>				<i>Length:</i> 14 <i>ft.</i> <i>Width:</i> 9 <i>ft.</i> <i>Height:</i> 10 <i>ft.</i> <i>Area:</i> 126 <i>sq.ft</i> <i>Floor:</i> Carpet <i>Wall:</i> Plaster <i>Ceiling:</i> Ceiling Tile <i>Asb Debris:</i> No <i>Notes:</i>				
208	NEG	Ceiling Tile, Laid-In 2' x 4' w/ Random Holes (old mtl # 208)	126 Sq.Ft.	Throughout Space: *126*□	Good	None	Friable	Low
209	NEG	Interior Plaster Finish (old mtl # 209)	552 Sq.Ft.	Throughout Space: Walls & Ceiling Above Suspended Ceiling *552*□	Good	None	Non-Friable	Low
215	ND None Detected	Baseboard 4" w/ Beige & Brown Mastic	46 Lin.Ft.	Throughout Space: *46*□	Good	None	Non-Friable	Low
215B	ND None Detected	Baseboard 4" w/ Beige & Brown Mastic (Split Layer: Mastic-Off-White)	46 Lin.Ft.	Throughout Space: *46*□	Good	None	Non-Friable	Low
216	ND None Detected	Carpet Adhesive Residual yellow adhesive under tack strip carpet	126 Sq.Ft.	Throughout Space: *126*□	Good	None	Non-Friable	Low

Project Name:

Building 018

Survey Segment:

A: Building 018

Address:

4150 Clement St., San Francisco, CA 94121

<u>Homog.</u> <u>Area #</u>	<u>Asbestos</u> <u>Results</u>	<u>Material Description</u>	<u>Quantity</u>	<u>Location / *(Quantity)*</u>	<u>Condition</u>	<u>DamageType</u>	<u>Friability</u>	<u>ExposurePot.</u>
<u>1: 108 Office</u>					Length: 9 ft. Width: 6 ft. Height: 10 ft. Area: 54 sq.ft. Floor: Carpet Wall: Plaster Ceiling: Ceiling Tile Asb Debris: No Notes:			
208	NEG	Ceiling Tile, Laid-In 2' x 4' w/ Random Holes (old mtl # 208)	54 Sq.Ft.	Throughout Space: *54*□	Good	None	Friable	Low
209	NEG	Interior Plaster Finish (old mtl # 209)	320 Sq.Ft.	Throughout Space: Walls & Ceiling Above Suspended Ceiling *320*□	Good	None	Non-Friable	Low
215	ND	Baseboard None Detected 4" w/ Beige & Brown Mastic	30 Lin.Ft.	Throughout Space: *30*□	Good	None	Non-Friable	Low
215B	ND	Baseboard None Detected 4" w/ Beige & Brown Mastic (Split Layer: Mastic-Off-White)	30 Lin.Ft.	Throughout Space: *30*□	Good	None	Non-Friable	Low
216	ND	Carpet Adhesive None Detected Residual yellow adhesive under tack strip carpet	54 Sq.Ft.	Throughout Space: *54*□	Good	None	Non-Friable	Low

Project Name:

Building 018

Survey Segment:

A: Building 018

Address:

4150 Clement St., San Francisco, CA 94121

<u>Homog.</u> <u>Area #</u>	<u>Asbestos</u> <u>Results</u>	<u>Material Description</u>	<u>Quantity</u>	<u>Location / *(Quantity)*</u>	<u>Condition</u>	<u>DamageType</u>	<u>Friability</u>	<u>ExposurePot.</u>
--------------------------------	-----------------------------------	-----------------------------	-----------------	--------------------------------	------------------	-------------------	-------------------	---------------------

1: 109 Office

Length: 13 ft. Width: 14 ft. Height: 10 ft. Area: 182 sq.ft
 Floor: Carpet Wall: Plaster Ceiling: Ceiling Tile
 Asb Debris: Yes Notes:

208	NEG	Ceiling Tile, Laid-In 2' x 4' w/ Random Holes (old mtl # 208)	182 Sq.Ft.	Throughout Space: *182*	Good	None	Friable	Low
209	NEG	Interior Plaster Finish (old mtl # 209)	688 Sq.Ft.	Throughout Space: Walls & Ceiling Above Suspended Ceiling *688*	Good	None	Non-Friable	Low
215	ND	Baseboard None Detected 4" w/ Beige & Brown Mastic	54 Lin.Ft.	Throughout Space: *54*	Good	None	Non-Friable	Low
215B	ND	Baseboard None Detected 4" w/ Beige & Brown Mastic (Split Layer: Mastic-Off-White)	54 Lin.Ft.	Throughout Space: *54*	Good	None	Non-Friable	Low
216	ND	Carpet Adhesive None Detected Residual yellow adhesive under tack strip carpet	182 Sq.Ft.	Throughout Space: *182*	Good	None	Non-Friable	Low

1: 110 Closet

Length: 2 ft. Width: 3 ft. Height: 10 ft. Area: 6 sq.ft
 Floor: Hardwood Wall: Plaster Ceiling: Plaster
 Asb Debris: Notes:

209	NEG	Interior Plaster Finish (old mtl # 209)	89 Sq.Ft.	Throughout Space: *89*	Good	None	Non-Friable	Low
-----	-----	--	-----------	------------------------	------	------	-------------	-----

1: 111 Office

Length: 16 ft. Width: 16 ft. Height: 12 ft. Area: 256 sq.ft
 Floor: Carpet Wall: Plaster Ceiling: Ceiling Tile
 Asb Debris: No Notes:

208	NEG	Ceiling Tile, Laid-In 2' x 4' w/ Random Holes (old mtl # 208)	256 Sq.Ft.	Throughout Space: *256*	Good	None	Friable	Low
209	NEG	Interior Plaster Finish (old mtl # 209)	1090 Sq.Ft.	Throughout Space: Walls & Ceiling Above Suspended Ceiling *1090*	Good	None	Non-Friable	Low

Project Name:

Building 018

Survey Segment:

A: Building 018

Address:

4150 Clement St., San Francisco, CA 94121

<u>Homog. Area #</u>	<u>Asbestos Results</u>	<u>Material Description</u>	<u>Quantity</u>	<u>Location / *(Quantity)*</u>	<u>Condition</u>	<u>DamageType</u>	<u>Friability</u>	<u>ExposurePot.</u>
<u>1: 112 Closet</u>					Length: 3 ft. Width: 2 ft. Height: 10 ft. Area: 6 sq.ft. Floor: Hardwood Wall: Plaster Ceiling: Plaster Asb Debris: No Notes:			
209	NEG	Interior Plaster Finish (old mtl # 209)	89 Sq.Ft.	Throughout Space: *89*□	Good	None	Non-Friable	Low
<u>1: 113 Office</u>					Length: 16 ft. Width: 14 ft. Height: 12 ft. Area: 224 sq.ft. Floor: Carpet Wall: Plaster Ceiling: Ceiling Tile Asb Debris: No Notes:			
208	NEG	Ceiling Tile, Laid-In 2' x 4' w/ Random Holes (old mtl # 208)	224 Sq.Ft.	Throughout Space: *224*□	Good	None	Friable	Low
209	NEG	Interior Plaster Finish (old mtl # 209)	1010 Sq.Ft.	Throughout Space: Walls & Ceiling Above Suspended Ceiling *1010*□	Good	None	Non-Friable	Low
<u>1: 114 Restroom</u>					Length: 7 ft. Width: 7 ft. Height: 12 ft. Area: 49 sq.ft. Floor: Ceramic Tile Wall: Plaster Ceiling: Plaster Asb Debris: No Notes:			
209	NEG	Interior Plaster Finish (old mtl # 209)	351 Sq.Ft.	Throughout Space: Walls & Ceiling *351*□	Good	None	Non-Friable	Low
211	POS	Ceramic Floor Tile Adhesive and Grout Brown & Green Tiles	49 Sq.Ft.	Throughout Space: *49*□	Good	None	Non-Friable	Low
212	ND	Ceramic Wall Tile Adhesive and Grout None Detected Yellow, Blue, & Green Tiles	95 Sq.Ft.	Throughout Space: Wainscot *95*□	Good	None	Non-Friable	Low

Project Name:

Building 018

Survey Segment:

A: Building 018

Address:

4150 Clement St., San Francisco, CA 94121

<u>Homog. Area #</u>	<u>Asbestos Results</u>	<u>Material Description</u>	<u>Quantity</u>	<u>Location / *(Quantity)*</u>	<u>Condition</u>	<u>DamageType</u>	<u>Friability</u>	<u>ExposurePot.</u>
<u>1: 115 Closet</u>					Length: 3 ft. Width: 2 ft. Height: 10 ft. Area: 6 sq.ft. Floor: Hardwood Wall: Plaster Ceiling: Plaster Asb Debris: No Notes:			
209	NEG	Interior Plaster Finish (old mtl # 209)	89 Sq.Ft.	Throughout Space: *89*□	Good	None	Non-Friable	Low
210	POS	Pipe Insulation Canvas Wrapped (old mtl # 210) 1-5% Chrysotile	24 Lin.Ft.	Throughout Space: Behind wall *24*□	Good	None	Friable	Low
<u>1: 116 Restroom</u>					Length: 7 ft. Width: 7 ft. Height: 12 ft. Area: 49 sq.ft. Floor: Ceramic Tile Wall: Plaster Ceiling: Plaster Asb Debris: No Notes:			
209	NEG	Interior Plaster Finish (old mtl # 209)	368 Sq.Ft.	Throughout Space: Walls & Ceiling *368*□	Good	None	Non-Friable	Low
211	POS	Ceramic Floor Tile Adhesive and Grout Brown & Green Tiles	49 Sq.Ft.	Throughout Space: *49*□	Good	None	Non-Friable	Low
212	ND None Detected	Ceramic Wall Tile Adhesive and Grout Yellow, Blue, & Green Tiles	20 Sq.Ft.	Throughout Space: Baseboard *20*□	Good	None	Non-Friable	Low
<u>1: 117 Office</u>					Length: 13 ft. Width: 9 ft. Height: 12 ft. Area: 117 sq.ft. Floor: Carpet Wall: Plaster Ceiling: Ceiling Tile Asb Debris: No Notes:			
208	NEG	Ceiling Tile, Laid-In 2' x 4' w/ Random Holes (old mtl # 208)	117 Sq.Ft.	Throughout Space: *117*□	Good	None	Friable	Low
209	NEG	Interior Plaster Finish (old mtl # 209)	611 Sq.Ft.	Throughout Space: Walls & Ceiling Above Suspended Ceiling *611*□	Good	None	Non-Friable	Low

Project Name:

Building 018

Survey Segment:

A: Building 018

Address:

4150 Clement St., San Francisco, CA 94121

<u>Homog.</u> <u>Area #</u>	<u>Asbestos</u> <u>Results</u>	<u>Material Description</u>	<u>Quantity</u>	<u>Location / *(Quantity)*</u>	<u>Condition</u>	<u>DamageType</u>	<u>Friability</u>	<u>ExposurePot.</u>
<u>1: 118 Office</u>					Length: 9 ft. Width: 6 ft. Height: 12 ft. Area: 54 sq.ft. Floor: Carpet Wall: Plaster Ceiling: Ceiling Tile Asb Debris: No Notes:			
208	NEG	Ceiling Tile, Laid-In 2' x 4' w/ Random Holes (old mtl # 208)	54 Sq.Ft.	Throughout Space: *54*	Good	None	Friable	Low
209	NEG	Interior Plaster Finish (old mtl # 209)	380 Sq.Ft.	Throughout Space: *380*	Good	None	Non-Friable	Low
<u>1: 119 Office</u>					Length: 13 ft. Width: 14 ft. Height: 12 ft. Area: 182 sq.ft. Floor: Carpet Wall: Plaster Ceiling: Ceiling Tile Asb Debris: No Notes:			
208	NEG	Ceiling Tile, Laid-In 2' x 4' w/ Random Holes (old mtl # 208)	182 Sq.Ft.	Throughout Space: *182*	Good	None	Friable	Low
209	NEG	Interior Plaster Finish (old mtl # 209)	796 Sq.Ft.	Throughout Space: Walls & Ceiling Above Suspended Ceiling *796*	Good	None	Non-Friable	Low
<u>1: East Corridor Hallway</u>					Length: 40 ft. Width: 4 ft. Height: 12 ft. Area: 160 sq.ft. Floor: Carpet Wall: Plaster Ceiling: Ceiling Tile Asb Debris: No Notes:			
208	NEG	Ceiling Tile, Laid-In 2' x 4' w/ Random Holes (old mtl # 208)	160 Sq.Ft.	Throughout Space: *160*	Good	None	Friable	Low
209	NEG	Interior Plaster Finish (old mtl # 209)	1046 Sq.Ft.	Throughout Space: *1046*	Good	None	Non-Friable	Low
215	ND	Baseboard None Detected 4" w/ Beige & Brown Mastic	88 Lin.Ft.	Throughout Space: *88*	Good	None	Non-Friable	Low
215B	ND	Baseboard None Detected 4" w/ Beige & Brown Mastic (Split Layer: Mastic-Off-White)	88 Lin.Ft.	Throughout Space: *88*	Good	None	Non-Friable	Low
216	ND	Carpet Adhesive None Detected Residual yellow adhesive under tack strip carpet	160 Sq.Ft.	Throughout Space: *160*	Good	None	Non-Friable	Low

Project Name:

Building 018

Survey Segment:

A: Building 018

Address:

4150 Clement St., San Francisco, CA 94121

<u>Homog. Area #</u>	<u>Asbestos Results</u>	<u>Material Description</u>	<u>Quantity</u>	<u>Location / *(Quantity)*</u>	<u>Condition</u>	<u>DamageType</u>	<u>Friability</u>	<u>ExposurePot.</u>
<u>1: West Corridor Hallway</u>					Length: 40 ft. Width: 4 ft. Height: 12 ft. Area: 160 sq.ft. Floor: Carpet Wall: Plaster Ceiling: Ceiling Tile Asb Debris: No Notes:			
208	NEG	Ceiling Tile, Laid-In 2' x 4' w/ Random Holes (old mtl # 208)	160 Sq.Ft.	Throughout Space: *160*□	Good	None	Friable	Low
209	NEG	Interior Plaster Finish (old mtl # 209)	1046 Sq.Ft.	Throughout Space: *1046*□	Good	None	Non-Friable	Low
<u>2: 201 Office</u>					Length: 16 ft. Width: 16 ft. Height: 12 ft. Area: 168 sq.ft. Floor: Carpet Wall: Plaster Ceiling: Ceiling Tile Asb Debris: No Notes:			
208	NEG	Ceiling Tile, Laid-In 2' x 4' w/ Random Holes (old mtl # 208)	256 Sq.Ft.	Throughout Space: *256*□	Good	None	Friable	Low
209	NEG	Interior Plaster Finish (old mtl # 209)	1090 Sq.Ft.	Throughout Space: Walls & Ceiling Above Suspended Ceiling *1090*□	Good	None	Non-Friable	Low
215	ND	Baseboard None Detected 4" w/ Beige & Brown Mastic	64 Lin.Ft.	Throughout Space: *64*□	Good	None	Non-Friable	Low
215B	ND	Baseboard None Detected 4" w/ Beige & Brown Mastic (Split Layer: Mastic-Off-White)	64 Lin.Ft.	Throughout Space: *64*□	Good	None	Non-Friable	Low
216	ND	Carpet Adhesive None Detected Residual yellow adhesive under tack strip carpet	64 Sq.Ft.	Throughout Space: *64*□	Good	None	Non-Friable	Low
<u>2: 202 Closet</u>					Length: 2 ft. Width: 3 ft. Height: 10 ft. Area: 6 sq.ft. Floor: Hardwood Wall: Plaster Ceiling: Plaster Asb Debris: No Notes:			
209	NEG	Interior Plaster Finish (old mtl # 209)	89 Sq.Ft.	Throughout Space: *89*□	Good	None	Non-Friable	Low

Project Name:

Building 018

Survey Segment:

A: Building 018

Address:

4150 Clement St., San Francisco, CA 94121

<u>Homog. Area #</u>	<u>Asbestos Results</u>	<u>Material Description</u>	<u>Quantity</u>	<u>Location / *(Quantity)*</u>	<u>Condition</u>	<u>DamageType</u>	<u>Friability</u>	<u>ExposurePot.</u>
----------------------	-------------------------	-----------------------------	-----------------	--------------------------------	------------------	-------------------	-------------------	---------------------

2: 203 Office

Length: 16 ft. Width: 16 ft. Height: 12 ft. Area: 168 sq.ft
 Floor: Carpet Wall: Plaster Ceiling: Ceiling Tile
 Asb Debris: No Notes:

208	NEG	Ceiling Tile, Laid-In 2' x 4' w/ Random Holes (old mtl # 208)	256 Sq.Ft.	Throughout Space: *256*	Good	None	Friable	Low
209	NEG	Interior Plaster Finish (old mtl # 209)	1090 Sq.Ft.	Throughout Space: Walls & Ceiling Above Suspended Ceiling *1090*	Good	None	Non-Friable	Low
215	ND	Baseboard None Detected 4" w/ Beige & Brown Mastic	64 Lin.Ft.	Throughout Space: *64*	Good	None	Non-Friable	Low
215B	ND	Baseboard None Detected 4" w/ Beige & Brown Mastic (Split Layer: Mastic-Off-White)	64 Lin.Ft.	Throughout Space: *64*	Good	None	Non-Friable	Low
216	ND	Carpet Adhesive None Detected Residual yellow adhesive under tack strip carpet	64 Sq.Ft.	Throughout Space: *64*	Good	None	Non-Friable	Low

2: 204 Restroom

Length: 7 ft. Width: 7 ft. Height: 12 ft. Area: 49 sq.ft
 Floor: Ceramic Tile Wall: Plaster Ceiling: Plaster
 Asb Debris: No Notes:

209	NEG	Interior Plaster Finish (old mtl # 209)	351 Sq.Ft.	Throughout Space: Walls & Ceiling *351*	Good	None	Non-Friable	Low
211	POS	Ceramic Floor Tile Adhesive and Grout Brown & Green Tiles	49 Sq.Ft.	Throughout Space: *49*	Good	None	Non-Friable	Low
212	ND	Ceramic Wall Tile Adhesive and Grout None Detected Yellow, Blue, & Green Tiles	95 Sq.Ft.	Throughout Space: Wainscot *95*	Good	None	Non-Friable	Low

Project Name:

Building 018

Survey Segment:

A: Building 018

Address:

4150 Clement St., San Francisco, CA 94121

<u>Homog. Area #</u>	<u>Asbestos Results</u>	<u>Material Description</u>	<u>Quantity</u>	<u>Location / *(Quantity)*</u>	<u>Condition</u>	<u>DamageType</u>	<u>Friability</u>	<u>ExposurePot.</u>
<u>2: 205 Closet</u>					Length: 3 ft. Width: 2 ft. Height: 10 ft. Area: 6 sq.ft. Floor: Hardwood Wall: Plaster Ceiling: Plaster Asb Debris: No Notes:			
209	NEG	Interior Plaster Finish (old mtl # 209)	89 Sq.Ft.	Throughout Space: *89*□	Good	None	Non-Friable	Low
210	POS	Pipe Insulation Canvas Wrapped (old mtl # 210) 1-5% Chrysotile	8 Lin.Ft.	Throughout Space: Behind wall *8*□	Good	None	Friable	Low
<u>2: 206 Restroom</u>					Length: 7 ft. Width: 7 ft. Height: 12 ft. Area: 49 sq.ft. Floor: Ceramic Tile Wall: Plaster Ceiling: Plaster Asb Debris: No Notes:			
209	NEG	Interior Plaster Finish (old mtl # 209)	351 Sq.Ft.	Throughout Space: Walls & Ceiling *351*□	Good	None	Non-Friable	Low
211	POS	Ceramic Floor Tile Adhesive and Grout Brown & Green Tiles	49 Sq.Ft.	Throughout Space: Walls & Ceiling *49*□	Good	None	Non-Friable	Low
212	ND	Ceramic Wall Tile Adhesive and Grout None Detected Yellow, Blue, & Green Tiles	15 Sq.Ft.	Throughout Space: Baseboard *15*□	Good	None	Non-Friable	Low

Project Name:

Building 018

Survey Segment:

A: Building 018

Address:

4150 Clement St., San Francisco, CA 94121

<u>Homog.</u> <u>Area #</u>	<u>Asbestos</u> <u>Results</u>	<u>Material Description</u>	<u>Quantity</u>	<u>Location / *(Quantity)*</u>	<u>Condition</u>	<u>DamageType</u>	<u>Friability</u>	<u>ExposurePot.</u>
<u>2: 207 Office</u>				Length: 9 ft. Width: 14 ft. Height: 12 ft. Area: 126 sq.ft. Floor: Carpet Wall: Plaster Ceiling: Ceiling Tile Asb Debris: No Notes:				
208	NEG	Ceiling Tile, Laid-In 2' x 4' w/ Random Holes (old mtl # 208)	126 Sq.Ft.	Throughout Space: *126*	Good	None	Friable	Low
209	NEG	Interior Plaster Finish (old mtl # 209)	644 Sq.Ft.	Throughout Space: Walls & Ceiling Above Suspended Ceiling *644*	Good	None	Non-Friable	Low
215	ND	Baseboard None Detected 4" w/ Beige & Brown Mastic	46 Lin.Ft.	Throughout Space: *46*	Good	None	Non-Friable	Low
215B	ND	Baseboard None Detected 4" w/ Beige & Brown Mastic (Split Layer: Mastic-Off-White)	46 Lin.Ft.	Throughout Space: *46*	Good	None	Non-Friable	Low
216	ND	Carpet Adhesive None Detected Residual yellow adhesive under tack strip carpet	126 Sq.Ft.	Throughout Space: *126*	Good	None	Non-Friable	Low

Project Name:

Building 018

Survey Segment:

A: Building 018

Address:

4150 Clement St., San Francisco, CA 94121

<u>Homog.</u> <u>Area #</u>	<u>Asbestos</u> <u>Results</u>	<u>Material Description</u>	<u>Quantity</u>	<u>Location / *(Quantity)*</u>	<u>Condition</u>	<u>DamageType</u>	<u>Friability</u>	<u>ExposurePot.</u>
<u>2: 208 Office</u>					Length: 9 ft. Width: 6 ft. Height: 12 ft. Area: 168 sq.ft. Floor: Carpet Wall: Plaster Ceiling: Ceiling Tile Asb Debris: No Notes:			
208	NEG	Ceiling Tile, Laid-In 2' x 4' w/ Random Holes (old mtl # 208)	54 Sq.Ft.	Throughout Space: *54*□	Good	None	Friable	Low
209	NEG	Interior Plaster Finish (old mtl # 209)	380 Sq.Ft.	Throughout Space: Walls & Ceiling Above Suspended Ceiling *380*□	Good	None	Non-Friable	Low
215	ND	Baseboard None Detected 4" w/ Beige & Brown Mastic	30 Lin.Ft.	Throughout Space: *30*□	Good	None	Non-Friable	Low
215B	ND	Baseboard None Detected 4" w/ Beige & Brown Mastic (Split Layer: Mastic-Off-White)	30 Lin.Ft.	Throughout Space: *30*□	Good	None	Non-Friable	Low
216	ND	Carpet Adhesive None Detected Residual yellow adhesive under tack strip carpet	54 Sq.Ft.	Throughout Space: *54*□	Good	None	Non-Friable	Low

Project Name:

Building 018

Survey Segment:

A: Building 018

Address:

4150 Clement St., San Francisco, CA 94121

<u>Homog.</u> <u>Area #</u>	<u>Asbestos</u> <u>Results</u>	<u>Material Description</u>	<u>Quantity</u>	<u>Location / *(Quantity)*</u>	<u>Condition</u>	<u>DamageType</u>	<u>Friability</u>	<u>ExposurePot.</u>
<u>2: 209 Office</u>					<i>Length:</i> 13 <i>ft.</i> <i>Width:</i> 14 <i>ft.</i> <i>Height:</i> 12 <i>ft.</i> <i>Area:</i> 182 <i>sq.ft</i> <i>Floor:</i> Carpet <i>Wall:</i> Plaster <i>Ceiling:</i> Ceiling Tile <i>Asb Debris:</i> No <i>Notes:</i>			
208	NEG	Ceiling Tile, Laid-In 2' x 4' w/ Random Holes (old mtl # 208)	182 Sq.Ft.	Throughout Space: *182*□	Good	None	Friable	Low
209	NEG	Interior Plaster Finish (old mtl # 209)	796 Sq.Ft.	Throughout Space: Walls & Ceiling Above Suspended Ceiling *796*□	Good	None	Non-Friable	Low
215	ND	Baseboard None Detected 4" w/ Beige & Brown Mastic	54 Lin.Ft.	Throughout Space: *54*□	Good	None	Non-Friable	Low
215B	ND	Baseboard None Detected 4" w/ Beige & Brown Mastic (Split Layer: Mastic-Off-White)	54 Lin.Ft.	Throughout Space: *54*□	Good	None	Non-Friable	Low
216	ND	Carpet Adhesive None Detected Residual yellow adhesive under tack strip carpet	182 Sq.Ft.	Throughout Space: *182*□	Good	None	Non-Friable	Low

Project Name:

Building 018

Survey Segment:

A: Building 018

Address:

4150 Clement St., San Francisco, CA 94121

<u>Homog.</u> <u>Area #</u>	<u>Asbestos</u> <u>Results</u>	<u>Material Description</u>	<u>Quantity</u>	<u>Location / *(Quantity)*</u>	<u>Condition</u>	<u>DamageType</u>	<u>Friability</u>	<u>ExposurePot.</u>
--------------------------------	-----------------------------------	-----------------------------	-----------------	--------------------------------	------------------	-------------------	-------------------	---------------------

2: 210 Office

Length: 14 ft. Width: 12 ft. Height: 12 ft. Area: 168 sq.ft.
 Floor: Carpet Wall: Plaster Ceiling: Ceiling Tile
 Asb Debris: No Notes:

208	NEG	Ceiling Tile, Laid-In 2' x 4' w/ Random Holes (old mtl # 208)	168 Sq.Ft.	Throughout Space: *168*	Good	None	Friable	Low
209	NEG	Interior Plaster Finish (old mtl # 209)	858 Sq.Ft.	Throughout Space: Walls & Ceiling Above Suspended Ceiling *858*	Good	None	Non-Friable	Low
215	ND	Baseboard None Detected 4" w/ Beige & Brown Mastic	52 Lin.Ft.	Throughout Space: *52*	Good	None	Non-Friable	Low
215B	ND	Baseboard None Detected 4" w/ Beige & Brown Mastic (Split Layer: Mastic-Off-White)	52 Lin.Ft.	Throughout Space: *52*	Good	None	Non-Friable	Low
216	ND	Carpet Adhesive None Detected Residual yellow adhesive under tack strip carpet	168 Sq.Ft.	Throughout Space: *168*	Good	None	Non-Friable	Low

2: 211 Office

Length: 16 ft. Width: 16 ft. Height: 12 ft. Area: 168 sq.ft.
 Floor: Carpet Wall: Plaster Ceiling: Ceiling Tile
 Asb Debris: No Notes:

208	NEG	Ceiling Tile, Laid-In 2' x 4' w/ Random Holes (old mtl # 208)	256 Sq.Ft.	Throughout Space: *256*	Good	None	Friable	Low
209	NEG	Interior Plaster Finish (old mtl # 209)	1090 Sq.Ft.	Throughout Space: Walls & Ceiling Above Suspended Ceiling *1090*	Good	None	Non-Friable	Low

2: 212 Closet

Length: 2 ft. Width: 3 ft. Height: 10 ft. Area: 6 sq.ft.
 Floor: Hardwood Wall: Plaster Ceiling: Plaster
 Asb Debris: No Notes:

209	NEG	Interior Plaster Finish (old mtl # 209)	89 Sq.Ft.	Throughout Space: *89*	Good	None	Non-Friable	Low
-----	-----	--	-----------	------------------------	------	------	-------------	-----

Project Name:

Building 018

Survey Segment:

A: Building 018

Address:

4150 Clement St., San Francisco, CA 94121

<u>Homog. Area #</u>	<u>Asbestos Results</u>	<u>Material Description</u>	<u>Quantity</u>	<u>Location / *(Quantity)*</u>	<u>Condition</u>	<u>DamageType</u>	<u>Friability</u>	<u>ExposurePot.</u>
<u>2: 213 Office</u>					Length: 16 ft. Width: 16 ft. Height: 12 ft. Area: 168 sq.ft. Floor: Carpet Wall: Plaster Ceiling: Ceiling Tile Asb Debris: No Notes:			
208	NEG	Ceiling Tile, Laid-In 2' x 4' w/ Random Holes (old mtl # 208)	256 Sq.Ft.	Throughout Space: *256*□	Good	None	Friable	Low
209	NEG	Interior Plaster Finish (old mtl # 209)	1090 Sq.Ft.	Throughout Space: Walls & Ceiling Above Suspended Ceiling *1090*□	Good	None	Non-Friable	Low
<u>2: 214 Restroom</u>					Length: 7 ft. Width: 7 ft. Height: 12 ft. Area: 49 sq.ft. Floor: Ceramic Tile Wall: Plaster Ceiling: Plaster Asb Debris: No Notes:			
209	NEG	Interior Plaster Finish (old mtl # 209)	351 Sq.Ft.	Throughout Space: Walls & Ceiling *351*□	Good	None	Non-Friable	Low
211	POS	Ceramic Floor Tile Adhesive and Grout Brown & Green Tiles	49 Sq.Ft.	Throughout Space: *49*□	Good	None	Non-Friable	Low
212	ND	Ceramic Wall Tile Adhesive and Grout None Detected Yellow, Blue, & Green Tiles	95 Sq.Ft.	Throughout Space: Wainscot *95*□	Good	None	Non-Friable	Low
<u>2: 215 Closet</u>					Length: 3 ft. Width: 2 ft. Height: 10 ft. Area: 6 sq.ft. Floor: Hardwood Wall: Plaster Ceiling: Plaster Asb Debris: No Notes:			
209	NEG	Interior Plaster Finish (old mtl # 209)	89 Sq.Ft.	Throughout Space: *89*□	Good	None	Non-Friable	Low
210	POS	Pipe Insulation Canvas Wrapped (old mtl # 210) 1-5% Chrysotile	8 Lin.Ft.	Throughout Space: Behind wall *8*□	Good	None	Friable	Low

Project Name:

Building 018

Survey Segment:

A: Building 018

Address:

4150 Clement St., San Francisco, CA 94121

<u>Homog. Area #</u>	<u>Asbestos Results</u>	<u>Material Description</u>	<u>Quantity</u>	<u>Location / *(Quantity)*</u>	<u>Condition</u>	<u>DamageType</u>	<u>Friability</u>	<u>ExposurePot.</u>
<u>2: 216 Restroom</u>					Length: 7 ft. Width: 7 ft. Height: 12 ft. Area: 49 sq.ft. Floor: Ceramic Tile Wall: Plaster Ceiling: Plaster Asb Debris: No Notes:			
209	NEG	Interior Plaster Finish (old mtl # 209)	368 Sq.Ft.	Throughout Space: Walls & Ceiling *368*□	Good	None	Non-Friable	Low
211	POS	Ceramic Floor Tile Adhesive and Grout Brown & Green Tiles	49 Sq.Ft.	Throughout Space: *49*□	Good	None	Non-Friable	Low
212	ND None Detected	Ceramic Wall Tile Adhesive and Grout Yellow, Blue, & Green Tiles	20 Sq.Ft.	Throughout Space: Baseboard *20*□	Good	None	Non-Friable	Low
<u>2: 217 Office</u>					Length: 9 ft. Width: 14 ft. Height: 12 ft. Area: 126 sq.ft. Floor: Carpet Wall: Plaster Ceiling: Ceiling Tile Asb Debris: No Notes:			
208	NEG	Ceiling Tile, Laid-In 2' x 4' w/ Random Holes (old mtl # 208)	126 Sq.Ft.	Throughout Space: *126*□	Good	None	Friable	Low
209	NEG	Interior Plaster Finish (old mtl # 209)	644 Sq.Ft.	Throughout Space: Walls & Ceiling Above Suspended Ceiling *644*□	Good	None	Non-Friable	Low
<u>2: 218 Office</u>					Length: 9 ft. Width: 6 ft. Height: 12 ft. Area: 168 sq.ft. Floor: Carpet Wall: Plaster Ceiling: Ceiling Tile Asb Debris: No Notes:			
208	NEG	Ceiling Tile, Laid-In 2' x 4' w/ Random Holes (old mtl # 208)	54 Sq.Ft.	Throughout Space: *54*□	Good	None	Friable	Low
209	NEG	Interior Plaster Finish (old mtl # 209)	380 Sq.Ft.	Throughout Space: Walls & Ceiling Above Suspended Ceiling *380*□	Good	None	Non-Friable	Low
221	ND None Detected	Gypsum Wallboard System No Skim Coat	20 Sq.Ft.	Throughout Space: N E Corner N Wall *20*□	Good	None	Friable	Low
221B	ND None Detected	Gypsum Wallboard System No Skim Coat (Split Layer: Texture-Off-White)	20 Sq.Ft.	Throughout Space: N E Corner N Wall *20*□	Good	None	Friable	Low

Project Name:

Building 018

Survey Segment:

A: Building 018

Address:

4150 Clement St., San Francisco, CA 94121

<u>Homog.</u> <u>Area #</u>	<u>Asbestos</u> <u>Results</u>	<u>Material Description</u>	<u>Quantity</u>	<u>Location / *(Quantity)*</u>	<u>Condition</u>	<u>DamageType</u>	<u>Friability</u>	<u>ExposurePot.</u>
<u>2: 219 Office</u>					Length: 13 ft. Width: 14 ft. Height: 12 ft. Area: 182 sq.ft. Floor: Carpet Wall: Plaster Ceiling: Ceiling Tile Asb Debris: No Notes:			
208	NEG	Ceiling Tile, Laid-In 2' x 4' w/ Random Holes (old mtl # 208)	182 Sq.Ft.	Throughout Space: *182*□	Good	None	Friable	Low
209	NEG	Interior Plaster Finish (old mtl # 209)	796 Sq.Ft.	Throughout Space: Walls & Ceiling Above Suspended Ceiling *796*□	Good	None	Non-Friable	Low
221	ND None Detected	Gypsum Wallboard System No Skim Coat	20 Sq.Ft.	Throughout Space: S E Corner S Wall *20*□	Good	None	Friable	Low
221B	ND None Detected	Gypsum Wallboard System No Skim Coat (Split Layer: Texture-Off-White)	20 Sq.Ft.	Throughout Space: S E Corner S Wall *20*□	Good	None	Friable	Low
<u>2: 220 Office</u>					Length: 14 ft. Width: 12 ft. Height: 12 ft. Area: 168 sq.ft. Floor: Carpet Wall: Plaster Ceiling: Ceiling Tile Asb Debris: No Notes:			
208	NEG	Ceiling Tile, Laid-In 2' x 4' w/ Random Holes (old mtl # 208)	168 Sq.Ft.	Throughout Space: *168*□	Good	None	Friable	Low
209	NEG	Interior Plaster Finish (old mtl # 209)	858 Sq.Ft.	Throughout Space: Walls & Ceiling Above Suspended Ceiling *858*□	Good	None	Non-Friable	Low
216	ND None Detected	Carpet Adhesive Residual yellow adhesive under tack strip carpet	168 Sq.Ft.	Throughout Space: *168*□	Good	None	Non-Friable	Low

Project Name:

Building 018

Survey Segment:

A: Building 018

Address:

4150 Clement St., San Francisco, CA 94121

<u>Homog.</u> <u>Area #</u>	<u>Asbestos</u> <u>Results</u>	<u>Material Description</u>	<u>Quantity</u>	<u>Location / *(Quantity)*</u>	<u>Condition</u>	<u>DamageType</u>	<u>Friability</u>	<u>ExposurePot.</u>
--------------------------------	-----------------------------------	-----------------------------	-----------------	--------------------------------	------------------	-------------------	-------------------	---------------------

2: East Corridor Hallway

Length: 40 ft. Width: 4 ft. Height: 12 ft. Area: 160 sq.ft.
 Floor: Carpet Wall: Plaster Ceiling: Ceiling Tile
 Asb Debris: Notes:

208	NEG	Ceiling Tile, Laid-In 2' x 4' w/ Random Holes (old mtl # 208)	160 Sq.Ft.	Throughout Space: *160*	Good	None	Friable	Low
209	NEG	Interior Plaster Finish (old mtl # 209)	1080 Sq.Ft.	Throughout Space: Walls & Ceiling Above Suspended Ceiling *1080*	Good	None	Non-Friable	Low
215	ND	Baseboard None Detected 4" w/ Beige & Brown Mastic	88 Lin.Ft.	Throughout Space: *88*	Good	None	Non-Friable	Low
215B	ND	Baseboard None Detected 4" w/ Beige & Brown Mastic (Split Layer: Mastic-Off-White)	88 Lin.Ft.	Throughout Space: *88*	Good	None	Non-Friable	Low
216	ND	Carpet Adhesive None Detected Residual yellow adhesive under tack strip carpet	160 Sq.Ft.	Throughout Space: *160*	Good	None	Non-Friable	Low

2: West Corridor Hallway

Length: 40 ft. Width: 4 ft. Height: 12 ft. Area: 160 sq.ft.
 Floor: Carpet Wall: Plaster Ceiling: Ceiling Tile
 Asb Debris: No Notes:

208	NEG	Ceiling Tile, Laid-In 2' x 4' w/ Random Holes (old mtl # 208)	160 Sq.Ft.	Throughout Space: *160*	Good	None	Friable	Low
209	NEG	Interior Plaster Finish (old mtl # 209)	1080 Sq.Ft.	Throughout Space: Walls & Ceiling Above Suspended Ceiling *1080*	Good	None	Non-Friable	Low

Project Name:

Building 018

Survey Segment:

A: Building 018

Address:

4150 Clement St., San Francisco, CA 94121

<u>Homog. Area #</u>	<u>Asbestos Results</u>	<u>Material Description</u>	<u>Quantity</u>	<u>Location / *(Quantity)*</u>	<u>Condition</u>	<u>DamageType</u>	<u>Friability</u>	<u>ExposurePot.</u>
<u>Basement: B1 Storage</u>					Length: 16 ft. Width: 16 ft. Height: 8 ft. Area: 256 sq.ft. Floor: Floor Tile Wall: Brick Ceiling: Plaster Asb Debris: No Notes:			
202	POS	Pipe Insulation Canvas Wrapped labled as ACM	25 Lin.Ft.	Throughout Space: @ Ceiling *25*□	Good	None	Friable	Low
203	POS	Pipe Fitting Insulation Canvas Wrapped Mudded labled as ACM	10 Each	Throughout Space: @ Ceiling *10*□	Good	None	Non-Friable	Low
204	NEG	Plaster Beige Unfinished (old mtl #204)	256 Sq.Ft.	Throughout Space: *256*□	Good	None	Non-Friable	Low
222	5-10% Chrysotile	Vinyl Floor Tile 9x9 Black w/ White & Green Streaks	256 Sq.Ft.	Throughout Space: *256*□	Good	None	Non-Friable	Low
222B	1-5% Chrysotile	Vinyl Floor Tile 9x9 Black w/ White & Green Streaks (Split Layer: Mastic-Black)	256 Sq.Ft.	Throughout Space: *256*□	Good	None	Non-Friable	Low
<u>Basement: B2 Storage</u>					Length: 13 ft. Width: 31 ft. Height: 8 ft. Area: 403 sq.ft. Floor: Concrete Wall: Brick Ceiling: Plaster Asb Debris: No Notes:			
202	POS	Pipe Insulation Canvas Wrapped labled as ACM	95 Lin.Ft.	Throughout Space: @ Ceiling *95*□	Good	None	Friable	Low
203	POS	Pipe Fitting Insulation Canvas Wrapped Mudded labled as ACM	20 Each	Throughout Space: @ Ceiling *20*□	Good	None	Non-Friable	Low
204	NEG	Plaster Beige Unfinished (old mtl #204)	403 Sq.Ft.	Throughout Space: *403*□	Dmgd	Broken	Non-Friable	Low

Project Name:

Building 018

Survey Segment:

A: Building 018

Address:

4150 Clement St., San Francisco, CA 94121

<u>Homog.</u> <u>Area #</u>	<u>Asbestos</u> <u>Results</u>	<u>Material Description</u>	<u>Quantity</u>	<u>Location / *(Quantity)*</u>	<u>Condition</u>	<u>DamageType</u>	<u>Friability</u>	<u>ExposurePot.</u>
<u>Basement: B3 Locked</u>					Length: 12 ft. Width: 19 ft. Height: 8 ft. Area: 228 sq.ft. Floor: Wall: Ceiling: Asb Debris: Notes: Locked and damaged door handle no access.			
202	POS	Pipe Insulation Canvas Wrapped labled as ACM	30 Lin.Ft.	Throughout Space: *30*	Good	None	Friable	Low
203	POS	Pipe Fitting Insulation Canvas Wrapped Mudded labled as ACM	10 Each	Throughout Space: *10*	Good	None	Non-Friable	Low
204	NEG	Plaster Beige Unfinished (old mtl #204)	228 Sq.Ft.	Throughout Space: *228*	Dmgd	Broken	Non-Friable	Low
<u>Basement: B4 Storage</u>					Length: 22 ft. Width: 16 ft. Height: 8 ft. Area: 352 sq.ft. Floor: Concrete Wall: Brick Ceiling: Plaster Asb Debris: No Notes:			
202	POS	Pipe Insulation Canvas Wrapped labled as ACM	70 Lin.Ft.	Throughout Space: @ Ceiling *70*	Good	None	Friable	Low
203	POS	Pipe Fitting Insulation Canvas Wrapped Mudded labled as ACM	20 Each	Throughout Space: @ Ceiling *20*	Good	None	Non-Friable	Low
204	NEG	Plaster Beige Unfinished (old mtl #204)	352 Sq.Ft.	Throughout Space: *352*	Dmgd	Broken	Non-Friable	Low
<u>Basement: B5 Storage</u>					Length: 12 ft. Width: 19 ft. Height: 8 ft. Area: 228 sq.ft. Floor: Concrete Wall: Brick Ceiling: Plaster Asb Debris: No Notes:			
202	POS	Pipe Insulation Canvas Wrapped labled as ACM	30 Lin.Ft.	Throughout Space: *30*	Good	None	Friable	Low
203	POS	Pipe Fitting Insulation Canvas Wrapped Mudded labled as ACM	10 Each	Throughout Space: *10*	Good	None	Non-Friable	Low
204	NEG	Plaster Beige Unfinished (old mtl #204)	228 Sq.Ft.	Throughout Space: *228*	Dmgd	Broken	Non-Friable	Low

Project Name:

Building 018

Survey Segment:

A: Building 018

Address:

4150 Clement St., San Francisco, CA 94121

<u>Homog.</u> <u>Area #</u>	<u>Asbestos</u> <u>Results</u>	<u>Material Description</u>	<u>Quantity</u>	<u>Location / *(Quantity)*</u>	<u>Condition</u>	<u>DamageType</u>	<u>Friability</u>	<u>ExposurePot.</u>
<u>Basement: B6 Storage</u>					Length: 13 ft. Width: 31 ft. Height: 8 ft. Area: 403 sq.ft. Floor: Concrete Wall: Brick Ceiling: Plaster Asb Debris: No Notes:			
202	POS	Pipe Insulation Canvas Wrapped labeled as ACM	95 Lin.Ft.	Throughout Space: @ Ceiling *95*	Good	None	Friable	Low
203	POS	Pipe Fitting Insulation Canvas Wrapped Mudded labeled as ACM	20 Each	Throughout Space: @ Ceiling *20*	Good	None	Non-Friable	Low
204	NEG	Plaster Beige Unfinished (old mtl #204)	403 Sq.Ft.	Throughout Space: *403*	Dmgd	Broken	Non-Friable	Low
<u>Basement: B7 Storage</u>					Length: 16 ft. Width: 16 ft. Height: 8 ft. Area: 256 sq.ft. Floor: Floor Tile Wall: Brick Ceiling: Plaster Asb Debris: No Notes:			
202	POS	Pipe Insulation Canvas Wrapped labeled as ACM	25 Lin.Ft.	Throughout Space: @ Ceiling *25*	Good	None	Friable	Low
203	POS	Pipe Fitting Insulation Canvas Wrapped Mudded labeled as ACM	10 Each	Throughout Space: @ Ceiling *10*	Good	None	Non-Friable	Low
204	NEG	Plaster Beige Unfinished (old mtl #204)	256 Sq.Ft.	Throughout Space: *256*	Dmgd	Broken	Non-Friable	Low
<u>Basement: B8 Storage</u>					Length: 22 ft. Width: 16 ft. Height: 8 ft. Area: 352 sq.ft. Floor: Concrete Wall: Brick Ceiling: Plaster Asb Debris: No Notes:			
202	POS	Pipe Insulation Canvas Wrapped labeled as ACM	70 Lin.Ft.	Throughout Space: @ Ceiling *70*	Good	None	Friable	Low
203	POS	Pipe Fitting Insulation Canvas Wrapped Mudded labeled as ACM	20 Each	Throughout Space: @ Ceiling *20*	Good	None	Non-Friable	Low
204	NEG	Plaster Beige Unfinished (old mtl #204)	352 Sq.Ft.	Throughout Space: *352*	Good	None	Non-Friable	Low

Project Name:

Building 018

Survey Segment:

A: Building 018

Address:

4150 Clement St., San Francisco, CA 94121

<u>Homog.</u> <u>Area #</u>	<u>Asbestos</u> <u>Results</u>	<u>Material Description</u>	<u>Quantity</u>	<u>Location / *(Quantity)*</u>	<u>Condition</u>	<u>DamageType</u>	<u>Friability</u>	<u>ExposurePot.</u>
--------------------------------	-----------------------------------	-----------------------------	-----------------	--------------------------------	------------------	-------------------	-------------------	---------------------

Total Reported Spaces/Rooms: 56
--

Appendix D

Detailed Report of Each Suspect Material's Locations

Surveyed Materials By Homogeneous Area

ALL ANALYTICAL RESULTS

Project Name:

Building 018

Survey Segment:

A: Building 018

Address:

4150 Clement St., San Francisco, CA 94121

<i>Floor: SpaceRm/Usage</i>	<i>Quantity</i>	<i>Location / *(SubQuantity)*</i>	<i>Condition</i>	<i>DamageTyp</i>	<i>ExposurePot</i>	<i>Friability</i>
ASB: POS	<u>Homogeneous Area # 202: (Split Layer:)</u>					
Basement: B1 Storage	25 Lin.Ft.	Throughout Space: @ Ceiling *25*□	Good	None	Low	Friable
Basement: B2 Storage	95 Lin.Ft.	Throughout Space: @ Ceiling *95*□	Good	None	Low	Friable
Basement: B3 Locked	30 Lin.Ft.	Throughout Space: *30*□	Good	None	Low	Friable
Basement: B4 Storage	70 Lin.Ft.	Throughout Space: @ Ceiling *70*□	Good	None	Low	Friable
Basement: B5 Storage	30 Lin.Ft.	Throughout Space: *30*□	Good	None	Low	Friable
Basement: B6 Storage	95 Lin.Ft.	Throughout Space: @ Ceiling *95*□	Good	None	Low	Friable
Basement: B7 Storage	25 Lin.Ft.	Throughout Space: @ Ceiling *25*□	Good	None	Low	Friable
Basement: B8 Storage	70 Lin.Ft.	Throughout Space: @ Ceiling *70*□	Good	None	Low	Friable
TOTAL	440	Lin.Ft.				

Project Name:
Building 018

Survey Segment:
A: Building 018

Address:
4150 Clement St., San Francisco, CA 94121

<i>Floor: SpaceRm/Usage</i>	<i>Quantity</i>	<i>Location / *(SubQuantity)*</i>	<i>Condition</i>	<i>DamageTyp</i>	<i>ExposurePot</i>	<i>Friability</i>
ASB: POS						
<u>Homogeneous Area # 203: (Split Layer:)</u>						
Basement: B1 Storage	10 Each	Throughout Space: @ Ceiling *10*□	Good	None	Low	Non-Friable
Basement: B2 Storage	20 Each	Throughout Space: @ Ceiling *20*□	Good	None	Low	Non-Friable
Basement: B3 Locked	10 Each	Throughout Space: *10*□	Good	None	Low	Non-Friable
Basement: B4 Storage	20 Each	Throughout Space: @ Ceiling *20*□	Good	None	Low	Non-Friable
Basement: B5 Storage	10 Each	Throughout Space: *10*□	Good	None	Low	Non-Friable
Basement: B6 Storage	20 Each	Throughout Space: @ Ceiling *20*□	Good	None	Low	Non-Friable
Basement: B7 Storage	10 Each	Throughout Space: @ Ceiling *10*□	Good	None	Low	Non-Friable
Basement: B8 Storage	20 Each	Throughout Space: @ Ceiling *20*□	Good	None	Low	Non-Friable
TOTAL	120	Each				

ASB: NEG						
<u>Homogeneous Area # 204: (Split Layer:)</u>						
Basement: B1 Storage	256 Sq.Ft.	Throughout Space: *256*□	Good	None	Low	Non-Friable
Basement: B2 Storage	403 Sq.Ft.	Throughout Space: *403*□	Dmgd	Broken	Low	Non-Friable
Basement: B3 Locked	228 Sq.Ft.	Throughout Space: *228*□	Dmgd	Broken	Low	Non-Friable
Basement: B4 Storage	352 Sq.Ft.	Throughout Space: *352*□	Dmgd	Broken	Low	Non-Friable
Basement: B5 Storage	228 Sq.Ft.	Throughout Space: *228*□	Dmgd	Broken	Low	Non-Friable
Basement: B6 Storage	403 Sq.Ft.	Throughout Space: *403*□	Dmgd	Broken	Low	Non-Friable
Basement: B7 Storage	256 Sq.Ft.	Throughout Space: *256*□	Dmgd	Broken	Low	Non-Friable
Basement: B8 Storage	352 Sq.Ft.	Throughout Space: *352*□	Good	None	Low	Non-Friable
TOTAL	2478	Sq.Ft.				

Project Name:
Building 018

Survey Segment:
A: Building 018

Address:
4150 Clement St., San Francisco, CA 94121

<i>Floor: SpaceRm/Usage</i>	<i>Quantity</i>	<i>Location / *(SubQuantity)*</i>	<i>Condition</i>	<i>DamageTyp</i>	<i>ExposurePot</i>	<i>Friability</i>
<hr/>						
ASB: POS	<u><i>Homogeneous Area # 205: (Split Layer:)</i></u>					
1,2: SE Stairwell Hallway	50 Sq.Ft.	Throughout Space: On landings under carpet *50*□	Good	None	Low	Non-Friable
1,2: SW Stairwell Hallway	50 Sq.Ft.	Throughout Space: On landings under carpet *50*□	Good	None	Low	Non-Friable
<i>TOTAL</i>	<i>100</i>	<i>Sq.Ft.</i>				
<hr/>						
ASB: POS	<u><i>Homogeneous Area # 206: (Split Layer:)</i></u>					
1,2: SW Stairwell Hallway	50 Sq.Ft.	Throughout Space: On landings *50*□	Good	None	Low	Friable
<i>TOTAL</i>	<i>50</i>	<i>Sq.Ft.</i>				
<hr/>						
ASB: NEG	<u><i>Homogeneous Area # 207: (Split Layer:)</i></u>					
1,2: SW Stairwell Hallway	35 Sq.Ft.	Throughout Space: @ Entry *35*□	Good	None	Low	Non-Friable
<i>TOTAL</i>	<i>35</i>	<i>Sq.Ft.</i>				

Project Name:
Building 018

Survey Segment:
A: Building 018

Address:
4150 Clement St., San Francisco, CA 94121

<i>Floor: SpaceRm/Usage</i>	<i>Quantity</i>	<i>Location / *(SubQuantity)*</i>	<i>Condition</i>	<i>DamageTyp</i>	<i>ExposurePot</i>	<i>Friability</i>
<hr/>						
ASB: NEG	<u>Homogeneous Area # 208: (Split Layer:)</u>					
1: 101 Office	352 Sq.Ft.	Throughout Space: *352*□	Good	None	Low	Friable
1: 103 Office	224 Sq.Ft.	Throughout Space: *224*□	Good	None	Low	Friable
1: 107 Office	126 Sq.Ft.	Throughout Space: *126*□	Good	None	Low	Friable
1: 108 Office	54 Sq.Ft.	Throughout Space: *54*□	Good	None	Low	Friable
1: 109 Office	182 Sq.Ft.	Throughout Space: *182*□	Good	None	Low	Friable
1: 111 Office	256 Sq.Ft.	Throughout Space: *256*□	Good	None	Low	Friable
1: 113 Office	224 Sq.Ft.	Throughout Space: *224*□	Good	None	Low	Friable
1: 117 Office	117 Sq.Ft.	Throughout Space: *117*□	Good	None	Low	Friable
1: 118 Office	54 Sq.Ft.	Throughout Space: *54*□	Good	None	Low	Friable
1: 119 Office	182 Sq.Ft.	Throughout Space: *182*□	Good	None	Low	Friable
1: East Corridor Hallway	160 Sq.Ft.	Throughout Space: *160*□	Good	None	Low	Friable
1: West Corridor Hallway	160 Sq.Ft.	Throughout Space: *160*□	Good	None	Low	Friable
2: 201 Office	256 Sq.Ft.	Throughout Space: *256*□	Good	None	Low	Friable
2: 203 Office	256 Sq.Ft.	Throughout Space: *256*□	Good	None	Low	Friable
2: 207 Office	126 Sq.Ft.	Throughout Space: *126*□	Good	None	Low	Friable
2: 208 Office	54 Sq.Ft.	Throughout Space: *54*□	Good	None	Low	Friable
2: 209 Office	182 Sq.Ft.	Throughout Space: *182*□	Good	None	Low	Friable
2: 210 Office	168 Sq.Ft.	Throughout Space: *168*□	Good	None	Low	Friable
2: 211 Office	256 Sq.Ft.	Throughout Space: *256*□	Good	None	Low	Friable
2: 213 Office	256 Sq.Ft.	Throughout Space: *256*□	Good	None	Low	Friable
2: 217 Office	126 Sq.Ft.	Throughout Space: *126*□	Good	None	Low	Friable

Project Name:

Building 018

Survey Segment:

A: Building 018

Address:

4150 Clement St., San Francisco, CA 94121

<i>Floor: SpaceRm/Usage</i>	<i>Quantity</i>	<i>Location / *(SubQuantity)*</i>	<i>Condition</i>	<i>DamageTyp</i>	<i>ExposurePot</i>	<i>Friability</i>
2: 218 Office	54 Sq.Ft.	Throughout Space: *54*□	Good	None	Low	Friable
2: 219 Office	182 Sq.Ft.	Throughout Space: *182*□	Good	None	Low	Friable
2: 220 Office	168 Sq.Ft.	Throughout Space: *168*□	Good	None	Low	Friable
2: East Corridor Hallway	160 Sq.Ft.	Throughout Space: *160*□	Good	None	Low	Friable
2: West Corridor Hallway	160 Sq.Ft.	Throughout Space: *160*□	Good	None	Low	Friable
<i>TOTAL</i>	<i>4495</i>	<i>Sq.Ft.</i>				

Project Name:
Building 018

Survey Segment:
A: Building 018

Address:
4150 Clement St., San Francisco, CA 94121

<i>Floor: SpaceRm/Usage</i>	<i>Quantity</i>	<i>Location / *(SubQuantity)*</i>	<i>Condition</i>	<i>DamageTyp</i>	<i>ExposurePot</i>	<i>Friability</i>
ASB: NEG						
<u>Homogeneous Area # 209: (Split Layer:)</u>						
1,2: NE Stairwell Hallway	1463 Sq.Ft.	Throughout Space: Walls & Ceiling *1463*□	Good	None	Low	Non-Friable
1,2: NW Stairwell Hallway	1463 Sq.Ft.	Throughout Space: Walls & Ceiling *1463*□	Good	None	Low	Non-Friable
1,2: SE Stairwell Hallway	1085 Sq.Ft.	Throughout Space: Walls & Ceiling *1085*□	Good	None	Low	Non-Friable
1,2: SW Stairwell Hallway	1085 Sq.Ft.	Throughout Space: Walls & Ceiling *1085*□	Good	None	Low	Non-Friable
1: 101 Office	1178 Sq.Ft.	Throughout Space: Walls & Ceiling Above Suspended Ceiling *1178*□	Good	None	Low	Non-Friable
1: 102 Closet	89 Sq.Ft.	Throughout Space: *89*□	Good	None	Low	Non-Friable
1: 103 Office	890 Sq.Ft.	Throughout Space: Walls & Ceiling Above Suspended Ceiling *890*□	Good	None	Low	Non-Friable
1: 104 Restroom	351 Sq.Ft.	Throughout Space: Walls & Ceiling *351*□	Good	None	Low	Non-Friable
1: 105 Closet	89 Sq.Ft.	Throughout Space: *89*□	Good	None	Low	Non-Friable
1: 106 Restroom	351 Sq.Ft.	Throughout Space: Walls & Ceiling *351*□	Good	None	Low	Non-Friable
1: 107 Office	552 Sq.Ft.	Throughout Space: Walls & Ceiling Above Suspended Ceiling *552*□	Good	None	Low	Non-Friable
1: 108 Office	320 Sq.Ft.	Throughout Space: Walls & Ceiling Above Suspended Ceiling *320*□	Good	None	Low	Non-Friable
1: 109 Office	688 Sq.Ft.	Throughout Space: Walls & Ceiling Above Suspended Ceiling *688*□	Good	None	Low	Non-Friable
1: 110 Closet	89 Sq.Ft.	Throughout Space: *89*□	Good	None	Low	Non-Friable
1: 111 Office	1090 Sq.Ft.	Throughout Space: Walls & Ceiling Above Suspended Ceiling *1090*□	Good	None	Low	Non-Friable
1: 112 Closet	89 Sq.Ft.	Throughout Space: *89*□	Good	None	Low	Non-Friable
1: 113 Office	1010 Sq.Ft.	Throughout Space: Walls & Ceiling Above Suspended Ceiling *1010*□	Good	None	Low	Non-Friable
1: 114 Restroom	351 Sq.Ft.	Throughout Space: Walls & Ceiling *351*□	Good	None	Low	Non-Friable

Project Name:
Building 018

Survey Segment:
A: Building 018

Address:
4150 Clement St., San Francisco, CA 94121

<i>Floor: SpaceRm/Usage</i>	<i>Quantity</i>	<i>Location / *(SubQuantity)*</i>	<i>Condition</i>	<i>DamageTyp</i>	<i>ExposurePot</i>	<i>Friability</i>
1: 115 Closet	89 Sq.Ft.	Throughout Space: *89*□	Good	None	Low	Non-Friable
1: 116 Restroom	368 Sq.Ft.	Throughout Space: Walls & Ceiling *368*□	Good	None	Low	Non-Friable
1: 117 Office	611 Sq.Ft.	Throughout Space: Walls & Ceiling Above Suspended Ceiling *611*□	Good	None	Low	Non-Friable
1: 118 Office	380 Sq.Ft.	Throughout Space: *380*□	Good	None	Low	Non-Friable
1: 119 Office	796 Sq.Ft.	Throughout Space: Walls & Ceiling Above Suspended Ceiling *796*□	Good	None	Low	Non-Friable
1: East Corridor Hallway	1046 Sq.Ft.	Throughout Space: *1046*□	Good	None	Low	Non-Friable
1: West Corridor Hallway	1046 Sq.Ft.	Throughout Space: *1046*□	Good	None	Low	Non-Friable
2: 201 Office	1090 Sq.Ft.	Throughout Space: Walls & Ceiling Above Suspended Ceiling *1090*□	Good	None	Low	Non-Friable
2: 202 Closet	89 Sq.Ft.	Throughout Space: *89*□	Good	None	Low	Non-Friable
2: 203 Office	1090 Sq.Ft.	Throughout Space: Walls & Ceiling Above Suspended Ceiling *1090*□	Good	None	Low	Non-Friable
2: 204 Restroom	351 Sq.Ft.	Throughout Space: Walls & Ceiling *351*□	Good	None	Low	Non-Friable
2: 205 Closet	89 Sq.Ft.	Throughout Space: *89*□	Good	None	Low	Non-Friable
2: 206 Restroom	351 Sq.Ft.	Throughout Space: Walls & Ceiling *351*□	Good	None	Low	Non-Friable
2: 207 Office	644 Sq.Ft.	Throughout Space: Walls & Ceiling Above Suspended Ceiling *644*□	Good	None	Low	Non-Friable
2: 208 Office	380 Sq.Ft.	Throughout Space: Walls & Ceiling Above Suspended Ceiling *380*□	Good	None	Low	Non-Friable
2: 209 Office	796 Sq.Ft.	Throughout Space: Walls & Ceiling Above Suspended Ceiling *796*□	Good	None	Low	Non-Friable
2: 210 Office	858 Sq.Ft.	Throughout Space: Walls & Ceiling Above Suspended Ceiling *858*□	Good	None	Low	Non-Friable
2: 211 Office	1090 Sq.Ft.	Throughout Space: Walls & Ceiling Above Suspended Ceiling *1090*□	Good	None	Low	Non-Friable

Project Name:
Building 018

Survey Segment:
A: Building 018

Address:
4150 Clement St., San Francisco, CA 94121

<i>Floor: SpaceRm/Usage</i>	<i>Quantity</i>	<i>Location / *(SubQuantity)*</i>	<i>Condition</i>	<i>DamageTyp</i>	<i>ExposurePot</i>	<i>Friability</i>
2: 212 Closet	89 Sq.Ft.	Throughout Space: *89*□	Good	None	Low	Non-Friable
2: 213 Office	1090 Sq.Ft.	Throughout Space: Walls & Ceiling Above Suspended Ceiling *1090*□	Good	None	Low	Non-Friable
2: 214 Restroom	351 Sq.Ft.	Throughout Space: Walls & Ceiling *351*□	Good	None	Low	Non-Friable
2: 215 Closet	89 Sq.Ft.	Throughout Space: *89*□	Good	None	Low	Non-Friable
2: 216 Restroom	368 Sq.Ft.	Throughout Space: Walls & Ceiling *368*□	Good	None	Low	Non-Friable
2: 217 Office	644 Sq.Ft.	Throughout Space: Walls & Ceiling Above Suspended Ceiling *644*□	Good	None	Low	Non-Friable
2: 218 Office	380 Sq.Ft.	Throughout Space: Walls & Ceiling Above Suspended Ceiling *380*□	Good	None	Low	Non-Friable
2: 219 Office	796 Sq.Ft.	Throughout Space: Walls & Ceiling Above Suspended Ceiling *796*□	Good	None	Low	Non-Friable
2: 220 Office	858 Sq.Ft.	Throughout Space: Walls & Ceiling Above Suspended Ceiling *858*□	Good	None	Low	Non-Friable
2: East Corridor Hallway	1080 Sq.Ft.	Throughout Space: Walls & Ceiling Above Suspended Ceiling *1080*□	Good	None	Low	Non-Friable
2: West Corridor Hallway	1080 Sq.Ft.	Throughout Space: Walls & Ceiling Above Suspended Ceiling *1080*□	Good	None	Low	Non-Friable
TOTAL	30222	Sq.Ft.				

ASB: POS

Homogeneous Area # 210: (Split Layer:)

1: 105 Closet	24 Lin.Ft.	Throughout Space: Behind wall *24*□	Good	None	Low	Friable
1: 115 Closet	24 Lin.Ft.	Throughout Space: Behind wall *24*□	Good	None	Low	Friable
2: 205 Closet	8 Lin.Ft.	Throughout Space: Behind wall *8*□	Good	None	Low	Friable
2: 215 Closet	8 Lin.Ft.	Throughout Space: Behind wall *8*□	Good	None	Low	Friable
TOTAL	64	Lin.Ft.				

Project Name:
Building 018

Survey Segment:
A: Building 018

Address:
4150 Clement St., San Francisco, CA 94121

<i>Floor: SpaceRm/Usage</i>	<i>Quantity</i>	<i>Location / *(SubQuantity)*</i>	<i>Condition</i>	<i>DamageTyp</i>	<i>ExposurePot</i>	<i>Friability</i>
ASB: POS						
<u>Homogeneous Area # 211: (Split Layer:)</u>						
1: 104 Restroom	49 Sq.Ft.	Throughout Space: *49*□	Good	None	Low	Non-Friable
1: 106 Restroom	49 Sq.Ft.	Throughout Space: Walls & Ceiling *49*□	Good	None	Low	Non-Friable
1: 114 Restroom	49 Sq.Ft.	Throughout Space: *49*□	Good	None	Low	Non-Friable
1: 116 Restroom	49 Sq.Ft.	Throughout Space: *49*□	Good	None	Low	Non-Friable
2: 204 Restroom	49 Sq.Ft.	Throughout Space: *49*□	Good	None	Low	Non-Friable
2: 206 Restroom	49 Sq.Ft.	Throughout Space: Walls & Ceiling *49*□	Good	None	Low	Non-Friable
2: 214 Restroom	49 Sq.Ft.	Throughout Space: *49*□	Good	None	Low	Non-Friable
2: 216 Restroom	49 Sq.Ft.	Throughout Space: *49*□	Good	None	Low	Non-Friable
TOTAL	392	Sq.Ft.				

ASB: ND None Detected						
<u>Homogeneous Area # 212: (Split Layer: Grout-Grey)</u>						
1: 104 Restroom	95 Sq.Ft.	Throughout Space: Wainscot *95*□	Good	None	Low	Non-Friable
1: 106 Restroom	15 Sq.Ft.	Throughout Space: Baseboard *15*□	Good	None	Low	Non-Friable
1: 114 Restroom	95 Sq.Ft.	Throughout Space: Wainscot *95*□	Good	None	Low	Non-Friable
1: 116 Restroom	20 Sq.Ft.	Throughout Space: Baseboard *20*□	Good	None	Low	Non-Friable
2: 204 Restroom	95 Sq.Ft.	Throughout Space: Wainscot *95*□	Good	None	Low	Non-Friable
2: 206 Restroom	15 Sq.Ft.	Throughout Space: Baseboard *15*□	Good	None	Low	Non-Friable
2: 214 Restroom	95 Sq.Ft.	Throughout Space: Wainscot *95*□	Good	None	Low	Non-Friable
2: 216 Restroom	20 Sq.Ft.	Throughout Space: Baseboard *20*□	Good	None	Low	Non-Friable
TOTAL	450	Sq.Ft.				

Project Name:

Building 018

Survey Segment:

A: Building 018

Address:

4150 Clement St., San Francisco, CA 94121

<i>Floor: SpaceRm/Usage</i>	<i>Quantity</i>	<i>Location / *(SubQuantity)*</i>	<i>Condition</i>	<i>DamageTyp</i>	<i>ExposurePot</i>	<i>Friability</i>
<hr/>						
ASB: POS	<u><i>Homogeneous Area # 213: (Split Layer:)</i></u>					
1,2: Exterior	11000 Sq.Ft.	Throughout Space: *11000*□	Good	None	Low	Non-Friable
<i>TOTAL</i>	<u>11000</u>	<i>Sq.Ft.</i>				
<hr/>						
ASB: NEG	<u><i>Homogeneous Area # 214: (Split Layer:)</i></u>					
1,2: Exterior	600 Lin.Ft.	Throughout Space: *600*□	Good	None	Low	Non-Friable
<i>TOTAL</i>	<u>600</u>	<i>Lin.Ft.</i>				

Project Name:
Building 018

Survey Segment:
A: Building 018

Address:
4150 Clement St., San Francisco, CA 94121

<i>Floor: SpaceRm/Usage</i>	<i>Quantity</i>	<i>Location / *(SubQuantity)*</i>	<i>Condition</i>	<i>DamageTyp</i>	<i>ExposurePot</i>	<i>Friability</i>
ASB: ND None Detected	<u>Homogeneous Area # 215: (Split Layer: Baseboard-Grey)</u>					
1,2: NE Stairwell Hallway	48 Lin.Ft.	Throughout Space: *48*□	Good	None	Low	Non-Friable
1,2: SE Stairwell Hallway	3 Lin.Ft.	Throughout Space: *3*□	Good	None	Low	Non-Friable
1: 101 Office	76 Lin.Ft.	Throughout Space: *76*□	Good	None	Low	Non-Friable
1: 103 Office	60 Lin.Ft.	Throughout Space: *60*□	Good	None	Low	Non-Friable
1: 107 Office	46 Lin.Ft.	Throughout Space: *46*□	Good	None	Low	Non-Friable
1: 108 Office	30 Lin.Ft.	Throughout Space: *30*□	Good	None	Low	Non-Friable
1: 109 Office	54 Lin.Ft.	Throughout Space: *54*□	Good	None	Low	Non-Friable
1: East Corridor Hallway	88 Lin.Ft.	Throughout Space: *88*□	Good	None	Low	Non-Friable
2: 201 Office	64 Lin.Ft.	Throughout Space: *64*□	Good	None	Low	Non-Friable
2: 203 Office	64 Lin.Ft.	Throughout Space: *64*□	Good	None	Low	Non-Friable
2: 207 Office	46 Lin.Ft.	Throughout Space: *46*□	Good	None	Low	Non-Friable
2: 208 Office	30 Lin.Ft.	Throughout Space: *30*□	Good	None	Low	Non-Friable
2: 209 Office	54 Lin.Ft.	Throughout Space: *54*□	Good	None	Low	Non-Friable
2: 210 Office	52 Lin.Ft.	Throughout Space: *52*□	Good	None	Low	Non-Friable
2: East Corridor Hallway	88 Lin.Ft.	Throughout Space: *88*□	Good	None	Low	Non-Friable
TOTAL	803	Lin.Ft.				

Project Name:
Building 018

Survey Segment:
A: Building 018

Address:
4150 Clement St., San Francisco, CA 94121

<i>Floor: SpaceRm/Usage</i>	<i>Quantity</i>	<i>Location / *(SubQuantity)*</i>	<i>Condition</i>	<i>DamageTyp</i>	<i>ExposurePot</i>	<i>Friability</i>
ASB: ND None Detected	<u>Homogeneous Area # 215B: (Split Layer: Mastic-Off-White)</u>					
1,2: NE Stairwell Hallway	48 Lin.Ft.	Throughout Space: *48*□	Good	None	Low	Non-Friable
1,2: SE Stairwell Hallway	3 Lin.Ft.	Throughout Space: *3*□	Good	None	Low	Non-Friable
1: 101 Office	76 Lin.Ft.	Throughout Space: *76*□	Good	None	Low	Non-Friable
1: 103 Office	60 Lin.Ft.	Throughout Space: *60*□	Good	None	Low	Non-Friable
1: 107 Office	46 Lin.Ft.	Throughout Space: *46*□	Good	None	Low	Non-Friable
1: 108 Office	30 Lin.Ft.	Throughout Space: *30*□	Good	None	Low	Non-Friable
1: 109 Office	54 Lin.Ft.	Throughout Space: *54*□	Good	None	Low	Non-Friable
1: East Corridor Hallway	88 Lin.Ft.	Throughout Space: *88*□	Good	None	Low	Non-Friable
2: 201 Office	64 Lin.Ft.	Throughout Space: *64*□	Good	None	Low	Non-Friable
2: 203 Office	64 Lin.Ft.	Throughout Space: *64*□	Good	None	Low	Non-Friable
2: 207 Office	46 Lin.Ft.	Throughout Space: *46*□	Good	None	Low	Non-Friable
2: 208 Office	30 Lin.Ft.	Throughout Space: *30*□	Good	None	Low	Non-Friable
2: 209 Office	54 Lin.Ft.	Throughout Space: *54*□	Good	None	Low	Non-Friable
2: 210 Office	52 Lin.Ft.	Throughout Space: *52*□	Good	None	Low	Non-Friable
2: East Corridor Hallway	88 Lin.Ft.	Throughout Space: *88*□	Good	None	Low	Non-Friable
TOTAL	803	Lin.Ft.				

Project Name:
Building 018

Survey Segment:
A: Building 018

Address:
4150 Clement St., San Francisco, CA 94121

<i>Floor: SpaceRm/Usage</i>	<i>Quantity</i>	<i>Location / *(SubQuantity)*</i>	<i>Condition</i>	<i>DamageTyp</i>	<i>ExposurePot</i>	<i>Friability</i>
ASB: ND None Detected	<u>Homogeneous Area # 216: (Split Layer: Mastic-Yellow)</u>					
1,2: NE Stairwell Hallway	119 Sq.Ft.	Throughout Space: *119*	Good	None	Low	Non-Friable
1,2: SE Stairwell Hallway	50 Sq.Ft.	Throughout Space: On landings *50*	Good	None	Low	Non-Friable
1: 101 Office	352 Sq.Ft.	Throughout Space: *352*	Good	None	Low	Non-Friable
1: 103 Office	224 Sq.Ft.	Throughout Space: *224*	Good	None	Low	Non-Friable
1: 107 Office	126 Sq.Ft.	Throughout Space: *126*	Good	None	Low	Non-Friable
1: 108 Office	54 Sq.Ft.	Throughout Space: *54*	Good	None	Low	Non-Friable
1: 109 Office	182 Sq.Ft.	Throughout Space: *182*	Good	None	Low	Non-Friable
1: East Corridor Hallway	160 Sq.Ft.	Throughout Space: *160*	Good	None	Low	Non-Friable
2: 201 Office	64 Sq.Ft.	Throughout Space: *64*	Good	None	Low	Non-Friable
2: 203 Office	64 Sq.Ft.	Throughout Space: *64*	Good	None	Low	Non-Friable
2: 207 Office	126 Sq.Ft.	Throughout Space: *126*	Good	None	Low	Non-Friable
2: 208 Office	54 Sq.Ft.	Throughout Space: *54*	Good	None	Low	Non-Friable
2: 209 Office	182 Sq.Ft.	Throughout Space: *182*	Good	None	Low	Non-Friable
2: 210 Office	168 Sq.Ft.	Throughout Space: *168*	Good	None	Low	Non-Friable
2: 220 Office	168 Sq.Ft.	Throughout Space: *168*	Good	None	Low	Non-Friable
2: East Corridor Hallway	160 Sq.Ft.	Throughout Space: *160*	Good	None	Low	Non-Friable
TOTAL	2253	Sq.Ft.				

ASB: ND None Detected	<u>Homogeneous Area # 218: (Split Layer: Baseboard-Grey)</u>					
1: 106 Restroom	10 Lin.Ft.	Throughout Space: *10*	Good	None	Low	Non-Friable
TOTAL	10	Lin.Ft.				

Project Name:

Building 018

Survey Segment:

A: Building 018

Address:

4150 Clement St., San Francisco, CA 94121

<i>Floor: SpaceRm/Usage</i>	<i>Quantity</i>	<i>Location / *(SubQuantity)*</i>	<i>Condition</i>	<i>DamageTyp</i>	<i>ExposurePot</i>	<i>Friability</i>
ASB: ND None Detected	<u>Homogeneous Area # 218B: (Split Layer: Mastic-Off-White)</u>					
1: 106 Restroom	10 Lin.Ft.	Throughout Space: *10*□	Good	None	Low	Non-Friable
TOTAL	10	Lin.Ft.				
ASB: ND None Detected	<u>Homogeneous Area # 219: (Split Layer: Vinyl-Tan)</u>					
1,2: SE Stairwell Hallway	50 Sq.Ft.	Throughout Space: *50*□	Good	None	Low	Non-Friable
1,2: SW Stairwell Hallway	50 Sq.Ft.	Throughout Space: *50*□	Good	None	Low	Non-Friable
TOTAL	100	Sq.Ft.				
ASB: ND None Detected	<u>Homogeneous Area # 219B: (Split Layer: Mastic-Yellow)</u>					
1,2: SE Stairwell Hallway	50 Sq.Ft.	Throughout Space: *50*□	Good	None	Low	Non-Friable
1,2: SW Stairwell Hallway	50 Sq.Ft.	Throughout Space: *50*□	Good	None	Low	Non-Friable
TOTAL	100	Sq.Ft.				
ASB: 5-10% Chrysotile	<u>Homogeneous Area # 219C: (Split Layer: Mastic-Brown)</u>					
1,2: SE Stairwell Hallway	50 Sq.Ft.	Throughout Space: *50*□	Good	None	Low	Non-Friable
1,2: SW Stairwell Hallway	50 Sq.Ft.	Throughout Space: *50*□	Good	None	Low	Non-Friable
TOTAL	100	Sq.Ft.				
ASB: ND None Detected	<u>Homogeneous Area # 220: (Split Layer: Sheet Floor/Backing-Green/Brown)</u>					
1,2: SE Stairwell Hallway	50 Sq.Ft.	Throughout Space: On landings under carpet and floor tiles. *50*□	Good	None	Low	Friable
TOTAL	50	Sq.Ft.				

Project Name:
Building 018

Survey Segment:
A: Building 018

Address:
4150 Clement St., San Francisco, CA 94121

<i>Floor: SpaceRm/Usage</i>	<i>Quantity</i>	<i>Location / *(SubQuantity)*</i>	<i>Condition</i>	<i>DamageTyp</i>	<i>ExposurePot</i>	<i>Friability</i>
<hr/>						
ASB: 5-10% Chrysotile	<u>Homogeneous Area # 220B: (Split Layer: Mastic-Brown)</u>					
1,2: SE Stairwell Hallway	50 Sq.Ft.	Throughout Space: On landings under carpet and floor tiles. *50*□	Good	None	Low	Friable
<i>TOTAL</i>	50	<i>Sq.Ft.</i>				
<hr/>						
ASB: ND None Detected	<u>Homogeneous Area # 221: (Split Layer: Drywall-White)</u>					
2: 218 Office	20 Sq.Ft.	Throughout Space: N E Corner N Wall *20*□	Good	None	Low	Friable
2: 219 Office	20 Sq.Ft.	Throughout Space: S E Corner S Wall *20*□	Good	None	Low	Friable
<i>TOTAL</i>	40	<i>Sq.Ft.</i>				
<hr/>						
ASB: ND None Detected	<u>Homogeneous Area # 221B: (Split Layer: Texture-Off-White)</u>					
2: 218 Office	20 Sq.Ft.	Throughout Space: N E Corner N Wall *20*□	Good	None	Low	Friable
2: 219 Office	20 Sq.Ft.	Throughout Space: S E Corner S Wall *20*□	Good	None	Low	Friable
<i>TOTAL</i>	40	<i>Sq.Ft.</i>				
<hr/>						
ASB: 5-10% Chrysotile	<u>Homogeneous Area # 222: (Split Layer: Floor Tile-Black)</u>					
Basement: B1 Storage	256 Sq.Ft.	Throughout Space: *256*□	Good	None	Low	Non-Friable
<i>TOTAL</i>	256	<i>Sq.Ft.</i>				
<hr/>						
ASB: 1-5% Chrysotile	<u>Homogeneous Area # 222B: (Split Layer: Mastic-Black)</u>					
Basement: B1 Storage	256 Sq.Ft.	Throughout Space: *256*□	Good	None	Low	Non-Friable
<i>TOTAL</i>	256	<i>Sq.Ft.</i>				

Total Reported Materials: 27

Appendix E

Samples Grouped by Material Number

Bulk Sample Analytical Results By Homogeneous Area #

ALL ANALYTICAL RESULTS

Project Name:

Building 018

Survey Segment:

A: Building 018

Address:

4150 Clement St., San Francisco, CA 94121

<u>Sample #</u>	<u>Homogeneous Area #</u>	<u>Material Description</u>	<u>Location /Description</u>	<u>Asbestos Results</u>
018-212-1	212	Ceramic Wall Tile Adhesive and Grout Yellow, Blue, & Green Tiles	1: 106 Restroom	ND None Detected
018-215-1	215	Baseboard 4" w/ Beige & Brown Mastic	1: East Corridor Hallway	ND None Detected
018-215-1	215B	Baseboard 4" w/ Beige & Brown Mastic (Split Layer: Mastic-Off-White)	1: East Corridor Hallway	ND None Detected
018-216-1	216	Carpet Adhesive Residual yellow adhesive under tack strip carpet	1: East Corridor Hallway	ND None Detected
018-216-2	216	Carpet Adhesive Residual yellow adhesive under tack strip carpet	1: 103 Office	ND None Detected
018-218-1	218	Baseboard 6" Gray w/ White Adhesive	1: 106 Restroom	ND None Detected
018-218-1	218B	Baseboard 6" Gray w/ White Adhesive (Split Layer: Mastic-Off-White)	1: 106 Restroom	ND None Detected
018-219-1	219	Vinyl stair tread Tan w/ Yellow Mastic	1,2: SE Stairwell Hallway	ND None Detected
018-219-1	219B	Vinyl stair tread Tan w/ Yellow Mastic (Split Layer: Mastic-Yellow)	1,2: SE Stairwell Hallway	ND None Detected
018-219-2	219	Vinyl stair tread Tan w/ Yellow Mastic	1,2: SW Stairwell Hallway	ND None Detected
018-219-2	219C	Vinyl stair tread Tan w/ Yellow Mastic (Split Layer: Mastic-Brown)	1,2: SW Stairwell Hallway	5-10% Chrysotile

Project Name:**Building 018****Survey Segment:****A: Building 018****Address:****4150 Clement St., San Francisco, CA 94121**

<u>Sample #</u>	<u>Homogeneous Area #</u>	<u>Material Description</u>	<u>Location /Description</u>	<u>Asbestos Results</u>
018-219-3	219	Vinyl stair tread Tan w/ Yellow Mastic	1,2: SW Stairwell Hallway	ND None Detected
018-219-3	219B	Vinyl stair tread Tan w/ Yellow Mastic (Split Layer: Mastic-Yellow)	1,2: SW Stairwell Hallway	ND None Detected
018-220-1	220	Vinyl Sheet Flooring Green Battleship	1,2: SE Stairwell Hallway	ND None Detected
018-220-1	220B	Vinyl Sheet Flooring Green Battleship (Split Layer: Mastic-Brown)	1,2: SE Stairwell Hallway	5-10% Chrysotile
018-221-1	221	Gypsum Wallboard System No Skim Coat	2: 219 Office	ND None Detected
018-221-1	221B	Gypsum Wallboard System No Skim Coat (Split Layer: Texture-Off-White)	2: 219 Office	ND None Detected
018-221-2	221	Gypsum Wallboard System No Skim Coat	2: 218 Office	ND None Detected
018-221-2	221B	Gypsum Wallboard System No Skim Coat (Split Layer: Texture-Off-White)	2: 218 Office	ND None Detected
018-222-1	222	Vinyl Floor Tile 9x9 Black w/ White & Green Streaks	Basement: B1 Storage	5-10% Chrysotile
018-222-1	222B	Vinyl Floor Tile 9x9 Black w/ White & Green Streaks (Split Layer: Mastic-Black)	Basement: B1 Storage	1-5% Chrysotile
018-222-2	222	Vinyl Floor Tile 9x9 Black w/ White & Green Streaks	Basement: B1 Storage	5-10% Chrysotile
018-222-2	222B	Vinyl Floor Tile 9x9 Black w/ White & Green Streaks (Split Layer: Mastic-Black)	Basement: B1 Storage	1-5% Chrysotile

Project Name:

Building 018

Survey Segment:

A: Building 018

Address:

4150 Clement St., San Francisco, CA 94121

<u>Sample #</u>	<u>Homogeneous Area #</u>	<u>Material Description</u>	<u>Location /Description</u>	<u>Asbestos Results</u>
Total Samples:				23

Appendix F

Laboratory Analytical Reports



ASBESTOS TEM LABORATORIES, INC.

EPA Interim Method Polarized Light Microscopy Analytical Report

Laboratory Job # 1127-00022

630 Bancroft Way
Berkeley, CA 94710
(510) 704-8930
FAX (510) 704-8429
www.asbestostemplabs.com

With Branch Offices Located At:
1016 GREG STREET, SPARKS, NV 89431
Ph. (775) 359-3377



ASBESTOS TEM LABORATORIES, INC

Accredited by
U.S. Dept. of Commerce



NVLAP Lab Code: 101891-0

CA DOHS ELAP

May-07-10

Mike Benefield
IHI Environmental - eClipSys
1260 45th St. Suite L
Emeryville, CA 94608

RE: LABORATORY JOB # 1127-00022
Polarized light microscopy analytical results for 13 bulk sample(s) with 10 sample split(s)
Job Site: A: Building 018
Job No.: 018

Enclosed please find the bulk material analytical results for one or more samples submitted for asbestos analysis. The analyses were performed in accordance with EPA Method 600/R-93/116 or 600/M4-82-020 for the determination of asbestos in bulk building materials by polarized light microscopy (PLM). Please note that while PLM analysis is commonly performed on non-friable and fine grained materials such as floor tiles and dust, the EPA method recognizes that PLM is subject to limitations. In these situations, accurate results may only be obtainable through the use of more sophisticated and accurate techniques such as transmission electron microscopy (TEM) or X-ray diffraction (XRD).

Prior to analysis, samples are logged-in and all data pertinent to the sample recorded. The samples are checked for damage or disruption of any chain-of-custody seals. A unique laboratory ID number is assigned to each sample. A hard copy log-in sheet containing all pertinent information concerning the sample is generated. This and all other relevant paper work are kept with the sample throughout the analytical procedures to assure proper analysis.

Each sample is opened in a class 100 HEPA negative air hood. A representative sampling of the material is selected and placed onto a glass microscope slide containing a drop of refractive index oil. The glass slide is placed under a polarizing light microscope where standard mineralogical techniques are used to analyze and quantify the various materials present, including asbestos. The data is then compiled into a standard report format and reviewed by the authorized signatory before being released to the client.

Sincerely Yours

Lab Manager
ASBESTOS TEM LABORATORIES, INC.

--- These results relate only to the samples tested and must not be reproduced, except in full, with the approval of the laboratory. This report must not be used to claim product endorsement by NVLAP or any other agency of the U.S. Government. ---

EPA Method 600/R-93/116 or 600/M4-82-020

Contact: Mike Benefield

Samples Indicated: 13

Report No. **083217**

Address: IHI Environmental - eClipSys
1260 45th St. Suite L
Emeryville, CA 94608

Reg. Samples Analyzed: 13

Date Submitted: May-06-10

Split Layers Analyzed: 10

Date Reported: May-07-10

Job Site / No. A: Building 018
018

Detection Limit of Method is Estimated to be 1% Asbestos Using a Visual Area Estimation Technique

Analyst Nelsa Grozmai

ASBESTOS TEM LABORATORIES, INC.
www.asbestostemplabs.com

630 Bancroft Way, Berkeley CA 94710 (510) 704-8930
With Offices in Reno, NV (775) 359-3377

POLARIZED LIGHT MICROSCOPY ANALYTICAL REPORT

EPA Method 600/R-93/116 or 600/M4-82-020

Page: 2 of

Contact: Mike Benefield Address: IHI Environmental - eClipSys 1260 45th St. Suite L Emeryville, CA 94608		Samples Indicated: 13 Reg. Samples Analyzed: 13 Split Layers Analyzed: 10 Job Site / No. A: Building 018 018		Report No. 083217 Date Submitted: May-06-10 Date Reported: May-07-10	
---	--	--	--	---	--

SAMPLE ID	%	ASBESTOS TYPE	OTHER DATA	DESCRIPTION
			1) Non-Asbestos Fibers 2) Matrix Materials 3) Date/Time Collected 4) Date Analyzed	FIELD <hr/> LAB
018-219-2 Lab ID # 1127-00022-007C	5-10%	Chrysotile	1) None Detected	Tan w/ Yellow Mastic Vinyl stair tread
			2) 90-95% Bndr	
			3) _____ 4) May-07-10	Mastic-Brown
018-219-3 Lab ID # 1127-00022-008A		None Detected	1) None Detected	Tan w/ Yellow Mastic Vinyl stair tread
			2) 99-100% Calc, Bndr, Other m.p.	
			3) _____ 4) May-07-10	Vinyl-Tan
018-219-3 Lab ID # 1127-00022-008B		None Detected	1) None Detected	Tan w/ Yellow Mastic Vinyl stair tread
			2) 99-100% Bndr, Other m.p.	
			3) _____ 4) May-07-10	Mastic-Yellow
018-220-1 Lab ID # 1127-00022-009A		None Detected	1) 60-70% Cellulose	Green Battleship Vinyl Sheet Flooring
			2) 30-40% Bndr, Other m.p.	
			3) _____ 4) May-07-10	Sheet Floor/Backing-Green/Brown
018-220-1 Lab ID # 1127-00022-009B	5-10%	Chrysotile	1) None Detected	Green Battleship Vinyl Sheet Flooring
			2) 90-95% Bndr	
			3) _____ 4) May-07-10	Mastic-Brown
018-221-1 Lab ID # 1127-00022-010A		None Detected	1) 1-5% Fiberglass	No Skim Coat Gypsum Wallboard System
			2) 95-99% Gyp, Other m.p.	
			3) _____ 4) May-07-10	Drywall-White
018-221-1 Lab ID # 1127-00022-010B		None Detected	1) None Detected	No Skim Coat Gypsum Wallboard System
			2) 99-100% Calc, Mica, Other m.p.	
			3) _____ 4) May-07-10	Texture-Off-White
018-221-2 Lab ID # 1127-00022-011A		None Detected	1) 1-5% Fiberglass	No Skim Coat Gypsum Wallboard System
			2) 95-99% Gyp, Other m.p.	
			3) _____ 4) May-07-10	Drywall-White
018-221-2 Lab ID # 1127-00022-011B		None Detected	1) None Detected	
			2) 99-100% Calc, Mica, Other m.p.	
			3) _____ 4) May-07-10	Texture-Off-White
018-222-1 Lab ID # 1127-00022-012A	5-10%	Chrysotile	1) None Detected	Black w/ White & Green Streaks Vinyl Floor Tile 9x9
			2) 90-95% Calc, Bndr, Other m.p.	
			3) _____ 4) May-07-10	Floor Tile-Black

Detection Limit of Method is Estimated to be 1% Asbestos Using a Visual Area Estimation Technique

Analyst Melissa Grozman

ASBESTOS TEM LABORATORIES, INC.
www.asbestostemplabs.com

630 Bancroft Way, Berkeley CA 94710 (510) 704-8930
With Offices in Reno, NV (775) 359-3377

POLARIZED LIGHT MICROSCOPY ANALYTICAL REPORT

EPA Method 600/R-93/116 or 600/M4-82-020

Page: 3 of

Contact: Mike Benefield Address: IHI Environmental - eClipSys 1260 45th St. Suite L Emeryville, CA 94608		Samples Indicated: 13 Reg. Samples Analyzed: 13 Split Layers Analyzed: 10 Job Site / No. A: Building 018 018		Report No. 083217 Date Submitted: May-06-10 Date Reported: May-07-10	
---	--	--	--	---	--

SAMPLE ID	%	ASBESTOS TYPE	OTHER DATA	DESCRIPTION
			1) Non-Asbestos Fibers 2) Matrix Materials 3) Date/Time Collected 4) Date Analyzed	FIELD LAB
018-222-1	1-5%	Chrysotile	1) None Detected 2) 95-99% Tar, Bndr, Calc, Other m.p.	Black w/ White & Green Streaks Vinyl Floor Tile 9x9
Lab ID # 1127-00022-012B			3) 4) May-07-10	Mastic-Black
018-222-2	5-10%	Chrysotile	1) None Detected 2) 90-95% Calc, Bndr, Other m.p.	Black w/ White & Green Streaks Vinyl Floor Tile 9x9
Lab ID # 1127-00022-013A			3) 4) May-07-10	Floor Tile-Black
018-222-2	1-5%	Chrysotile	1) None Detected 2) 95-99% Tar, Bndr, Calc, Other m.p.	
Lab ID # 1127-00022-013B			3) 4) May-07-10	Mastic-Black
			1) 2)	
Lab ID #			3) 4)	
			1) 2)	
Lab ID #			3) 4)	
			1) 2)	
Lab ID #			3) 4)	
			1) 2)	
Lab ID #			3) 4)	
			1) 2)	
Lab ID #			3) 4)	
			1) 2)	
Lab ID #			3) 4)	

Detection Limit of Method is Estimated to be 1% Asbestos Using a Visual Area Estimation Technique

Analyst Melissa Grozman

ASBESTOS TEM LABORATORIES, INC.
www.asbestostemplabs.com

630 Bancroft Way, Berkeley CA 94710 (510) 704-8930
With Offices in Reno, NV (775) 359-3377



Bulk Sample Submission / Chain-of-Custody Form

Asbestos TEM Laboratories, Inc.

Company: IHI Environmental

Office: Emeryville

Client: SF VAMC

Date/Time: 5/8/2010 4:43:32 PM

Project: Building 018

Project #: 018

Segment: A: Building 018

Task #:

Address: 4150 Clement St.

San Francisco

CA

Sampler: Mike Benefield

Sample #	Code	Material Description	Location
018-212-1	1	Ceramic Wall Tile Adhesive and Grout; Yellow, Blue, & Green Tiles	1: 106 Restroom: S Wall
018-215-1	1	Baseboard; 4" w/ Beige & Brown Mastic	1: East Corridor Hallway: By 103
018-216-1	1	Carpet Adhesive; Residual yellow adhesive under tack strip carpet	1: East Corridor Hallway: By 109
018-216-2	1	Carpet Adhesive; Residual yellow adhesive under tack strip carpet	1: 103 Office: @ Door
018-218-1	1	Baseboard; 6" Gray w/ White Adhesive	1: 106 Restroom: @ N Wall
018-219-1	1	Vinyl stair tread; Tan w/ Yellow Mastic	1,2: SE Stairwell Hallway: Stairs
018-219-2	1	Vinyl stair tread; Tan w/ Yellow Mastic	1,2: SW Stairwell Hallway:
018-219-3	1	Vinyl stair tread; Tan w/ Yellow Mastic	1,2: SW Stairwell Hallway:
018-220-1	1	Vinyl Sheet Flooring; Green Battleship	1,2: SE Stairwell Hallway: 2nd Floor Landing
018-221-1	1	Gypsum Wallboard System; No Skim Coat	2: 219 Office: S Wall @ S E Corner
018-221-2	1	Gypsum Wallboard System; No Skim Coat	2: 218 Office: S Wall @ SE Corner
018-222-1	1	Vinyl Floor Tile 9x9; Black w/ White & Green Streaks	Basement: B1 Storage: S
018-222-2	1	Vinyl Floor Tile 9x9; Black w/ White & Green Streaks	Basement: B1 Storage: N

Total Sample Count

13

Column 2 - Analysis Codes:

#1: Method A Only

#3: Method A and B

#5: Other - See Instructions

#2: Method B Only

#4: A Then B per Instructions

#6: Hold

RELINQUISHED BY:

Name: Mike Benefield

Signature

Date/Time: Sept. 17, 2009

RECEIVED BY:

Name:

Signature

Date/Time:

POLARIZED LIGHT MICROSCOPY ANALYTICAL REPORT

EPA Method 600/R-93/116 or 600/M4-82-020

Page: 1 of 4

Contact: Michael Benefield Address: IHI Environmental 1260 45th Street, Suite 1, Emeryville, CA 94608		Samples Indicated: 31 Reg. Samples Analyzed: 29 Split Layers Analyzed: 7 Job Site / No. A: Bldg018	Report No. 036345 Date Submitted: Mar-19-03 Date Reported: Aug-22-03
--	--	--	--

SAMPLE ID	% ASBESTOS TYPE	OTHER DATA	DESCRIPTION
		1) Non-Asbestos Fibers 2) Matrix Materials 3) Date/Time Collected 4) Date Analyzed	FIELD LAB
Bldg018-03/18: A-204-1	None Detected	1) 1-5% Cellulose 2) 95-99% Gyp, Qtz, Mica	Beige Unfinished Ceiling Plaster
Lab ID # 139-00001-001		3) 4) Mar-28-03	Plaster-White
Bldg018-03/18: A-204-2	None Detected	1) 1-5% Cellulose 2) 95-99% Gyp, Qtz, Mica	Beige Unfinished Ceiling Plaster
Lab ID # 139-00001-002		3) 4) Mar-28-03	Plaster-White
Bldg018-03/18: A-204-3	None Detected	1) 1-5% Cellulose 2) 95-99% Gyp, Qtz, Mica	Beige Unfinished Ceiling Plaster
Lab ID # 139-00001-003		3) 4) Mar-28-03	Plaster-White
Bldg018-03/18: A-205-1	None Detected	1) None Detected 2) 99-100% Calc, Bndr, Other m.p.	Tan w/ white streaks Vinyl Floor Tile 12x12
Lab ID # 139-00001-004		3) 4) Mar-28-03	Floor Tile-Tan
Bldg018-03/18: A-205-1	None Detected	1) None Detected 2) 99-100% Glue, Opg, Calc, Qtz	Tan w/ white streaks Vinyl Floor Tile 12x12
Lab ID # 139-00001-004B		3) 4) Mar-28-03	Glue-Brown
Bldg018-03/18: A-205-2	None Detected	1) None Detected 2) 99-100% Calc, Bndr, Other m.p.	Tan w/ white streaks Vinyl Floor Tile 12x12
Lab ID # 139-00001-005		3) 4) Mar-28-03	Floor Tile-Tan
Bldg018-03/18: A-205-3	None Detected	1) None Detected 2) 99-100% Calc, Bndr, Other m.p.	Tan w/ white streaks Vinyl Floor Tile 12x12
Lab ID # 139-00001-006		3) 4) Mar-28-03	Floor Tile-Tan
Bldg018-03/18: A-205-3	5-10% Chrysotile	1) None Detected 2) 90-95% Glue, Qtz, Calc, Other m.p.	Tan w/ white streaks Vinyl Floor Tile 12x12
Lab ID # 139-00001-006C		3) 4) Mar-28-03	Glue-Brown
Bldg018-03/18: A-206-1	5-10% Chrysotile	1) 1-5% Cellulose 2) 85-94% Glue, Qtz, Calc, Other m.p.	Gray Battleship Vinyl Floor Sheeting
Lab ID # 139-00001-007		3) 4) Mar-28-03	Glue (Top)-Dark Brown
Bldg018-03/18: A-206-1	None Detected	1) 10-20% Cellulose 2) 80-90% Bndr, Calc, Glue, Qtz	Gray Battleship Vinyl Floor Sheeting
Lab ID # 139-00001-007B		3) 4) Mar-28-03	Floor Tile-Grey

Detection Limit of Method is Estimated to be 1% Asbestos Using a Visual Area Estimation Technique

Lab QC Reviewer 	Analyst 
ASBESTOS TEM LABORATORIES, INC. www.asbestostemlabs.com	1409 FIFTH STREET, BERKELEY, CA 94710 (510) 528-0108 With Offices in Reno, NV (775) 359-3377

POLARIZED LIGHT MICROSCOPY ANALYTICAL REPORT

EPA Method 600/R-93/116 or 600/M4-82-020

Page: 2 of 4

Contact: Michael Benefield Address: IHI Environmental 1260 45th Street, Suite L Emeryville, CA 94608		Samples Indicated: 31 Reg. Samples Analyzed: 29 Split Layers Analyzed: 7 Job Site / No. A: Bldg018		Report No. 036345 Date Submitted: Mar-19-03 Date Reported: Aug-22-03	
---	--	--	--	--	--

SAMPLE ID	% ASBESTOS TYPE	OTHER DATA		DESCRIPTION
		1) Non-Asbestos Fibers 2) Matrix Materials 3) Date/Time Collected 4) Date Analyzed	FIELD LAB	
Bldg018-03/18: A-206-1 Lab ID # 139-00001-007C	None Detected	1) 5-10% Cellulose 2) 90-95% Calc, Bndr, Qtz, Other m.p. 3) 4) Mar-28-03	Gray Battleship Vinyl Floor Sheeting Glue (Bottom)-Brown	
Bldg018-03/18: A-206-2 Lab ID # 139-00001-008	Not Analyzed	1) 2) 3) 4) Mar-28-03	Gray Battleship Vinyl Floor Sheeting	
Bldg018-03/18: A-206-2 Lab ID # 139-00001-008B	None Detected	1) 10-20% Cellulose 2) 80-90% Bndr, Calc, Glue, Qtz 3) 4) Mar-28-03	Gray Battleship Vinyl Floor Sheeting Floor Tile-Gray	
Bldg018-03/18: A-206-2 Lab ID # 139-00001-008C	None Detected	1) 5-10% Cellulose 2) 90-95% Calc, Bndr, Qtz, Other m.p. 3) 4) Mar-28-03	Gray Battleship Vinyl Floor Sheeting Glue (Bottom)-Brown	
Bldg018-03/18: A-207-1 Lab ID # 139-00001-009	None Detected	1) None Detected 2) 99-100% Calc, Bndr, Other m.p. 3) 4) Mar-28-03	White Vinyl Floor Tile 12x12 Floor Tile-Off-White	
Bldg018-03/18: A-207-1 Lab ID # 139-00001-009B	None Detected	1) 1-5% Cellulose 2) 95-99% Glue, Opq, Qtz, Other m.p. 3) 4) Mar-28-03	White Vinyl Floor Tile 12x12 Glue-Brown	
Bldg018-03/18: A-208-1 Lab ID # 139-00001-010	None Detected	1) 40-60% FiberGlass, Cellulose 2) 40-60% GlassFrags, GlassFoam, Bndr 3) 4) Mar-28-03	White Random Holes Ceiling Tiles 2x4 Ceiling Tile-Off-White	
Bldg018-03/18: A-208-2 Lab ID # 139-00001-011	None Detected	1) 40-60% FiberGlass, Cellulose 2) 40-60% GlassFrags, GlassFoam, Bndr 3) 4) Mar-28-03	White Random Holes Ceiling Tiles 2x4 Ceiling Tile-Off-White	
Bldg018-03/18: A-208-3 Lab ID # 139-00001-012	None Detected	1) 40-60% FiberGlass, Cellulose 2) 40-60% GlassFrags, GlassFoam, Bndr 3) 4) Mar-28-03	White Random Holes Ceiling Tiles 2x4 Ceiling Tile-Off-White	
Bldg018-03/18: A-209-1 Lab ID # 139-00001-013	None Detected	1) None Detected 2) 99-100% Gyp, Calc, Qtz, Mica 3) 4) Mar-28-03	White Interior Plaster Finish PlastFine-White	

Detection Limit of Method is Estimated to be 1% Asbestos Using a Visual Area Estimation Technique

Lab QC Reviewer

R. Mc. Benoit

Analyst

Greg Romano

ASBESTOS TEM LABORATORIES, INC.
www.asbestosstemlabs.com

1409 FIFTH STREET, BERKELEY, CA 94710
With Offices in Reno, NV (775) 359-3377

(510) 528-0108

POLARIZED LIGHT MICROSCOPY ANALYTICAL REPORT

EPA Method 600/R-93/116 or 600/M4-82-020

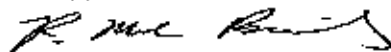
Page: 3 of 4

Contact: Michael Benefield Address: IHI Environmental 1260 45th Street, Suite L Emeryville, CA 94608		Samples Indicated: 31 Reg. Samples Analyzed: 29 Split Layers Analyzed: 7 Job Site / No. A: Bldg018		Report No: 036345 Date Submitted: Mar-19-03 Date Reported: Aug-22-03	
---	--	--	--	--	--

SAMPLE ID	% ASBESTOS TYPE	OTHER DATA		DESCRIPTION
		1) Non-Asbestos Fibers 2) Matrix Materials 3) Date/Time Collected 4) Date Analyzed	FIELD LAB	
Bldg018-03/18: A-209-2	None Detected	1)None Detected 2)99-100% Calc, Qtz, Mica, Other m.p.	White Interior Plaster Finish	
Lab ID # 139-00001-014		3) 4) Mar-28-03	Plaster-White	
Bldg018-03/18: A-209-3	None Detected	1)None Detected 2)99-100% Calc, Qtz, Mica, Other m.p.	White Interior Plaster Finish	
Lab ID # 139-00001-015		3) 4) Mar-28-03	Plaster-White	
Bldg018-03/18: A-209-3	None Detected	1)None Detected 2)99-100% Qtz, Mica, Calc	White Interior Plaster Finish	
Lab ID # 139-00001-015Q		3) 4) Mar-28-03	PlastFinc-White	
Bldg018-03/18: A-209-4	None Detected	1)None Detected 2)99-100% Calc, Qtz, Mica, Other m.p.	White Interior Plaster Finish	
Lab ID # 139-00001-016		3) 4) Mar-28-03	Plaster-White	
Bldg018-03/18: A-209-5	None Detected	1)None Detected 2)99-100% Calc, Qtz, Mica, Other m.p.	White Interior Plaster Finish	
Lab ID # 139-00001-017		3) 4) Mar-28-03	Plaster-White	
Bldg018-03/18: A-209-6	None Detected	1)None Detected 2)99-100% Calc, Qtz, Mica, Other m.p.	White Interior Plaster Finish	
Lab ID # 139-00001-018		3) 4) Mar-28-03	Plaster-White	
Bldg018-03/18: A-209-7	None Detected	1)None Detected 2)99-100% Calc, Qtz, Mica, Other m.p.	White Interior Plaster Finish	
Lab ID # 139-00001-019		3) 4) Mar-28-03	Plaster-White	
Bldg018-03/18: A-210-1	None Detected	1)90-95% Cellulose 2)5-10% Glue, Opq	Risers Pipe Insulation Straight Run	
Lab ID # 139-00001-020		3) 4) Mar-28-03	Insulation-Grey	
Bldg018-03/18: A-210-2	1-5% Chrysotile	1)80-90% Cellulose 2)5-19% Glue, Opq, Other m.p.	Risers Pipe Insulation Straight Run	
Lab ID # 139-00001-021		3) 4) Mar-28-03	Insulation-Grey	
Bldg018-03/18: A-210-3	Not Analyzed	1) 2)	Risers Pipe Insulation Straight Run	
Lab ID # 139-00001-022		3) 4) Mar-28-03		

Detection Limit of Method is Estimated to be 1% Asbestos Using a Visual Area Estimation Technique

Lab QC Reviewer



Analyst



ASBESTOS TEM LABORATORIES, INC.
www.asbestosstemlabs.com

1409 FIFTH STREET, BERKELEY, CA 94710
With Offices in Reno, NV (775) 359-3377

(510) 528-0108

POLARIZED LIGHT MICROSCOPY ANALYTICAL REPORT

EPA Method 600/R-93/116 or 600/M4-82-020

Page: 4 of 4

Contact: Michael Benefield		Samples Indicated: 31	Report No. 036345
Address: IHI Environmental		Reg. Samples Analyzed: 29	Date Submitted: Mar-19-03
1260 45th Street, Suite L		Split Layers Analyzed: 7	Date Reported: Aug-22-03
Emeryville, CA 94608		Job Site / No. A:	
		Bldg018	
SAMPLE ID	ASBESTOS % TYPE	OTHER DATA	DESCRIPTION
		1) Non-Asbestos Fibers 2) Matrix Materials 3) Date/Time Collected 4) Date Analyzed	FIELD LAB
Bldg018-03/18: A-213-1	None Detected	1) None Detected	Tan Stucco
Lab ID # 139-00001-023		2) 99-100% Qtz, Calc, Opq. Other m.p.	
		3) 4) Mar-28-03	Stucco-Off-White
Bldg018-03/18: A-213-2	None Detected	1) None Detected	Tan Stucco
Lab ID # 139-00001-024		2) 99-100% Calc, Mica, Qtz, Other m.p.	
		3) 4) Mar-28-03	Stucco-Off-White
Bldg018-03/18: A-213-3	None Detected	1) None Detected	Tan Stucco
Lab ID # 139-00001-025		2) 99-100% Calc, Mica, Qtz, Other m.p.	
		3) 4) Mar-28-03	Stucco-Off-White
Bldg018-03/18: A-213-4	None Detected	1) None Detected	Tan Stucco
Lab ID # 139-00001-026		2) 99-100% Calc, Mica, Qtz, Other m.p.	
		3) 4) Mar-28-03	Stucco-Off-White
Bldg018-03/18: A-213-5	<1% Chrysotile	1) None Detected	Tan Stucco
Lab ID # 139-00001-027		2) 100-100% Calc, Qtz, Mica, Other m.p.	
		3) 4) Mar-28-03	Stucco-Off-White
Bldg018-03/18: A-213-6	<1% Chrysotile	1) None Detected	Tan Stucco
Lab ID # 139-00001-028		2) 100-100% Calc, Qtz, Mica, Other m.p.	
		3) 4) Aug-22-03	Stucco-Off-White
Bldg018-03/18: A-213-7	<1% Chrysotile	1) None Detected	Tan Stucco
Lab ID # 139-00001-029		2) 100-100% Calc, Qtz, Mica, Other m.p.	
		3) 4) Aug-22-03	Stucco-Off-White
Bldg018-03/18: A-214-1	None Detected	1) 1-5% Cellulose	Window Putty
Lab ID # 139-00001-030		2) 95-99% Calc, Bndr, Other m.p.	
		3) 4) Mar-28-03	Putty-Grey
Bldg018-03/18: A-214-2	None Detected	1) <1% Cellulose	Window Putty
Lab ID # 139-00001-031		2) 100-100% Calc, Bndr, Qtz, Other m.p.	
		3) 4) Mar-28-03	Putty-Grey
Lab ID #		1)	
		2)	
		3) 4)	

Detection Limit of Method is Estimated to be 1% Asbestos Using a Visual Area Estimation Technique

Lab QC Reviewer

Analyst

ASBESTOS TEM LABORATORIES, INC.
www.asbestostemplabs.com

1409 FIFTH STREET, BERKELEY, CA 94710
With Offices in Reno, NV (775) 359-3377

(510) 528-0108



Bulk Sample Submission / Chain-of-Custody Form

Asbestos TEM Laboratories, Inc

Company: **HI ENVIRONMENTAL**

Office:

Client:

Date/Time: 3/19/2003 9:29:35 AM

Project: **VAMC 9F Building 18**

Project #: **Bldg018**

Segment: **A:**

Task #:

Address: **4150 Clement Street**

San Francisco CA

Sampler: **Joffrey Kabling**

Sample #	Code	Material Description	Location
✓ Bldg018-03/18: A-204-1	1	Ceiling Plaster; Beige Unfinished	Basement: B1, B2, B3, B4 Storage /:
✓ Bldg018-03/18: A-204-2	1	Ceiling Plaster; Beige Unfinished	Basement: B1, B2, B3, B4 Storage /:
✓ Bldg018-03/18: A-204-3	1	Ceiling Plaster; Beige Unfinished	Basement: B5, B6, B7, B8 Storage /:
✓ Bldg018-03/18: A-205-1	1	Vinyl Floor Tile 12x12; Tan w/ white streaks	1: S3 Southwest Stairway /:
✓ Bldg018-03/18: A-205-2	1	Vinyl Floor Tile 12x12; Tan w/ white streaks	1: S3 Southwest Stairway /:
✓ Bldg018-03/18: A-205-3	1	Vinyl Floor Tile 12x12; Tan w/ white streaks	1: S1 Southeast Stairway /:
✓ Bldg018-03/18: A-206-1	1	Vinyl Floor Sheeting; Gray Battleship	1: S3 Southwest Stairway /:
✓ Bldg018-03/18: A-206-2	1	Vinyl Floor Sheeting; Gray Battleship	1: S3 Southwest Stairway /:
✓ Bldg018-03/18: A-207-1	1	Vinyl Floor Tile 12x12; White	1: S3 Southwest Stairway /:
✓ Bldg018-03/18: A-208-1	1	Ceiling Tiles 2x4; White Random Holes	1: C5 Corridor /:
✓ Bldg018-03/18: A-208-2	1	Ceiling Tiles 2x4; White Random Holes	2: C8 Corridor /:
✓ Bldg018-03/18: A-208-3	1	Ceiling Tiles 2x4; White Random Holes	1: C1 Corridor /:
✓ Bldg018-03/18: A-209-1	1	Interior Plaster Finish; White	1: C5 Corridor /: Ceiling
✓ Bldg018-03/18: A-209-2	1	Interior Plaster Finish; White	1: C5 Corridor /: Wall above hung ceiling
✓ Bldg018-03/18: A-209-3	1	Interior Plaster Finish; White	1: 114 M. Toilet /:
✓ Bldg018-03/18: A-209-4	1	Interior Plaster Finish; White	2: C8 Corridor /:
✓ Bldg018-03/18: A-209-5	1	Interior Plaster Finish; White	1: C1 Corridor /:
✓ Bldg018-03/18: A-209-6	1	Interior Plaster Finish; White	2: C4 Corridor /: Wall
✓ Bldg018-03/18: A-209-7	1	Interior Plaster Finish; White	2: C4 Corridor /: Ceiling
✓ Bldg018-03/18: A-210-1	1	Pipe Insulation Straight Run; Risers in closet access hatch	1: 115 Closet /:
✓ Bldg018-03/18: A-210-2	1	Pipe Insulation Straight Run; Risers in closet access hatch	1: 115 Closet /:
✓ Bldg018-03/18: A-210-3	1	Pipe Insulation Straight Run; Risers in closet access hatch	1: 105 Closet /:
✓ Bldg018-03/18: A-213-1	1	Stucco; Tan	Exterior /:

Column 2 - Analysis Codes:

#1: Method A Only

#3: Method A and B

#5: Other - See Instructions

#2: Method B Only

#4: A Then B per Instructions

#6: Hold

RELINQUISHED BY:

Name: ~~Joffrey Kabling~~ **Mike Benefield**

Signature

M. Benefield

Date/Time:

Wednesday, March 19, 2003

RECEIVED BY:

Name: **Louis Tai**

Sign:

Louis Tai

Date/Time:

03-19-03A11:42 RCVD

Page 1 of 2



Bulk Sample Submission / Chain-of-Custody Form

Asbestos TEM Laboratories, Inc.

Company: *IHI Environmental*

Office:

Client:

Date/Time: 3/19/2003 9:29:35 AM

Project: VAMC SF Building 18

Project #: Bldg018

Segment: A:

Task #:

Address: 4150 Clement Street

San Francisco CA

Sampler: Joffrey Kabling

Sample #	Code	Material Description	Location
✓ Bldg018-03/18: A-213-2	1	Stucco; Tan	Exterior / :
✓ Bldg018-03/18: A-213-3	1	Stucco; Tan	Exterior / :
✓ Bldg018-03/18: A-213-4	1	Stucco; Tan	Exterior / :
✓ Bldg018-03/18: A-213-5	1	Stucco; Tan	Exterior / :
✓ Bldg018-03/18: A-213-6	1	Stucco; Tan	Exterior / :
✓ Bldg018-03/18: A-213-7	1	Stucco; Tan	Exterior / :
✓ Bldg018-03/18: A-214-1	1	Window Putty;	Exterior / :
✓ Bldg018-03/18: A-214-2	1	Window Putty;	Exterior / :

31 samples

Column 2 - Analysis Codes:

#1: Method A Only

#3: Method A and B

#5: Other - See Instructions

#2: Method B Only

#4: A Then B per Instructions

#6: Hold

RELINQUISHED BY:

Name: ~~Joffrey Kabling~~ *Mike Bonotfield*

Signature *M. B. Bonotfield*

Date/Time:

RECEIVED BY:

Name: *Louis Tai*

Sign: *Louis Tai*

Date/Time:

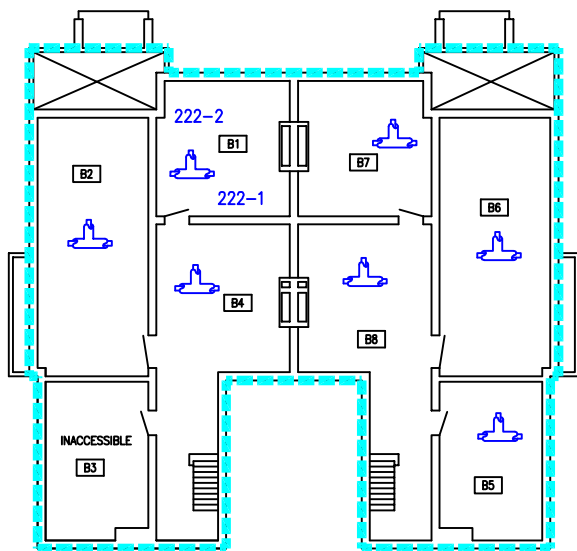
03-19-03A11:42 RCVD

Wednesday, March 19, 2003

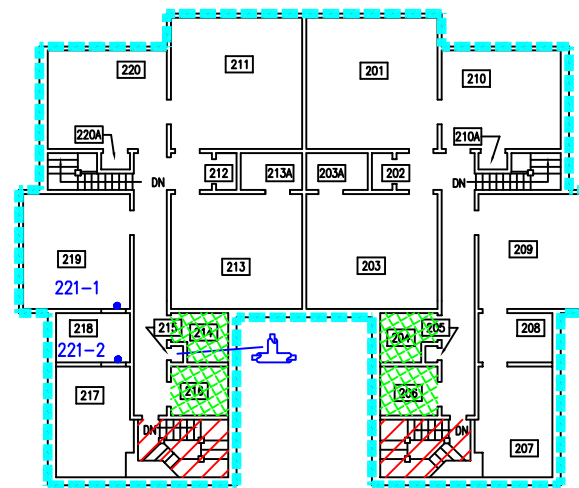
Page 2 of 2

Appendix G

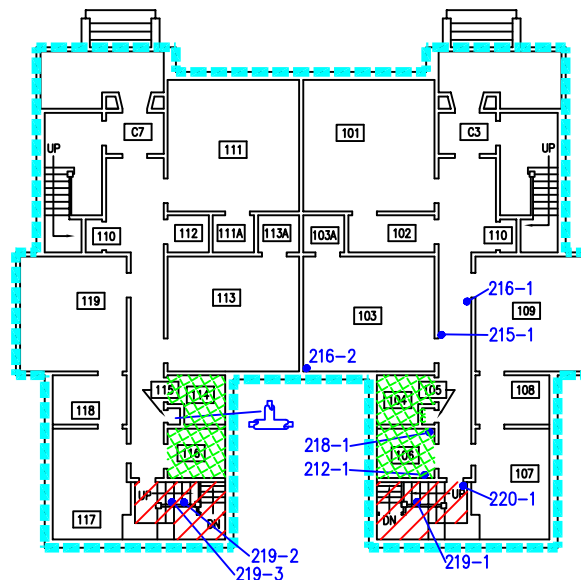
Sample and Asbestos-Containing Material Location Drawings







BUILDING 18 - BASEMENT FLOOR



BUILDING 18 - 2ND FLOOR



BUILDING 18 - 1ST FLOOR

-  ACM Pipe Insulation
-  ACM Floor Tiles and Mastic
-  ACCM Exterior Stucco
-  ACM Ceramic Floor Tile Adhesive and Grout



ENVIRONMENTAL
1260 45th Street
Emeryville, CA 94606-2907
510.923.1661
cal@ihi-env.com

SF VA Medical Center
Building : 018
Sample and Material Location Drawing
Asbestos Material Survey

PROJECT No:	09B-2173
SHEET NO:	1
DRAWN BY:	M Benefield
DATE:	02-12-10
REVISED BY:	
DATE:	