

Do not remove! ALL DIMENSIONS ARE UNLESS OTHERWISE SPECIFIED AND UNLESS OTHERWISE NOTED OTHERWISE APPROVED DRAWING IS NOT VALID FOR PRODUCTION. By signing, you certify your approval in the following areas:

Overall Dimensions

Material

Construction and Design

Hardware (fasteners, cables, accessories)

Delivery Access (will it fit through doors)

Facility Integration (rough in alignment, etc)

Approval Signature

\_\_\_\_\_

Date: \_\_\_\_\_

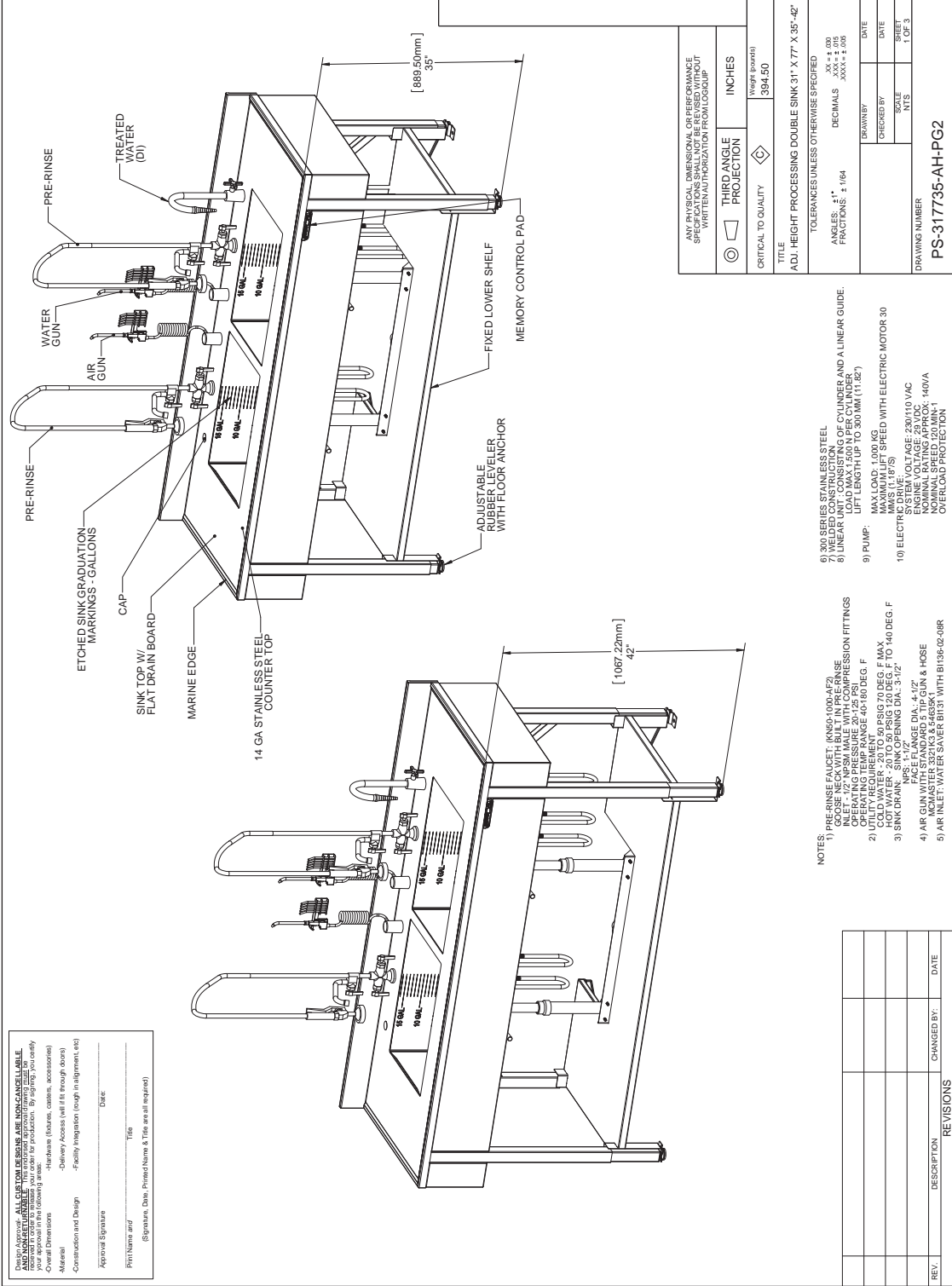
First Name and

\_\_\_\_\_

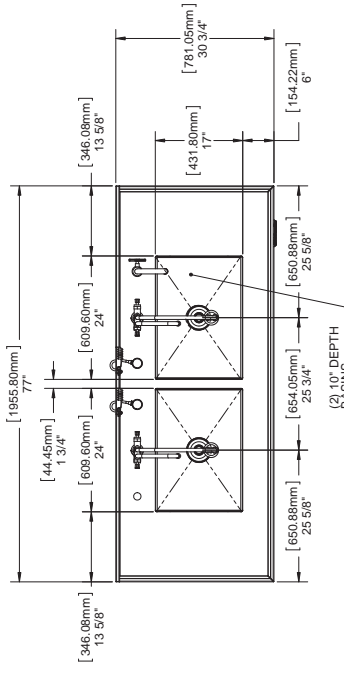
Last Name and

\_\_\_\_\_

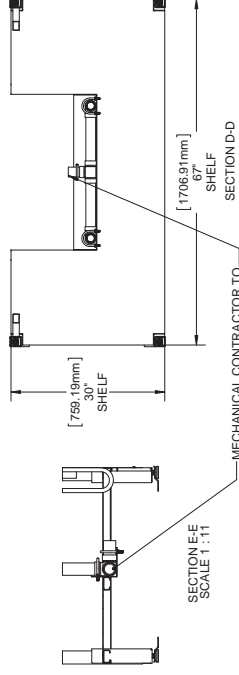
Signature, Date, Printed Name & Title are all required!



REV.	DESCRIPTION	REVISIONS	
		CHANGED BY:	DATE

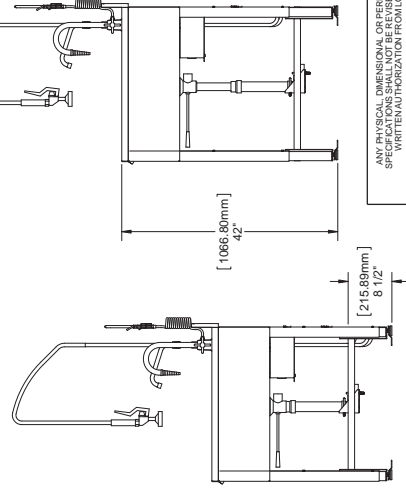
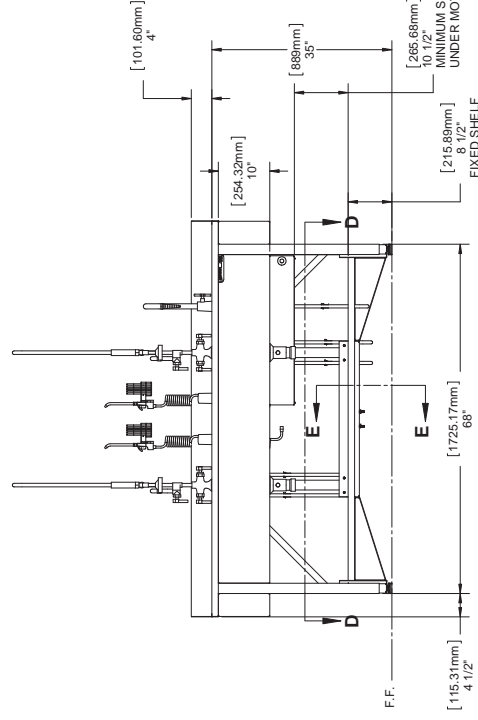




(2) 10" DEPTH  
BASINS



SECTION E-E  
SCALE 1 : 11

MECHANICAL CONTRACTOR TO  
CONNECT TO EXISTING FLOOR  
OR WALL DRAIN IN ACCORDANCE  
WITH APPLICABLE LOCAL CODE  
STANDARDS.



ANY PHYSICAL DIMENSIONAL OR PERFORMANCE SPECIFICATIONS SHALL NOT BE REVISED WITHOUT WRITTEN AUTHORIZATION FROM LOGICUP		
	THIRD ANGLE PROJECTION	INCHES
CRITICAL TO QUALITY		Weight (pounds)

TITLE	354.00
ADJ. HEIGHT PROCESSING DOUBLE SINK 31" X 77" X 35'-42"	
TOLERANCES UNLESS OTHERWISE SPECIFIED	

ANGLES:  $\pm 1^\circ$   
FRACTIONS:  $\pm 1/64$   
DECIMALS  
XX =  $\pm .030$   
XXX =  $\pm .015$   
XXXX =  $\pm .005$

	DRAWN BY	DATE
	CHECKED BY	DATE
	SCALE AUTO	SHEET 2 OF 2

DRAWING NUMBER	NTS	Z OF 3
PS-317735-AH-PG2		

- NOTES:
- 1) PRE-RINSE FAUCET (K560-1000A72)
  - 2) GOOSE NECK WITH BUILT IN PRE-RINSE INLET 1/2" NPT, NIPPLE WITH COMPRESSION FITTINGS
  - 3) 1/2" NIPPLE WITH COMPRESSION FITTINGS
  - 4) OPERATING TEMP RANGE 40-180 DEG. F
  - 5) UTILITY REQUIREMENT
  - 6) COLD WATER 20 TO 180 PSIG 70 DEG. F MAX.
  - 7) HOT WATER 120 TO 180 PSIG 210 DEG. F
  - 8) SINK DRAIN: SINK OPENING DIA. 3-1/2" NPS, 1-1/2" FLANGE DIA. 4-1/2"
  - 9) AIR GUN W/TESS 1/2" PDS 5" TIP GUN & HOSE
  - 10) MCMASTER 332 K3 & 546351
  - 11) AIR INLET: WATER SAVER B1131 WITH B1136-02-08R

-	See SHEET 1	-	-
REV.	DESCRIPTION	CHANGED BY:	DATE
REVISIONS			

