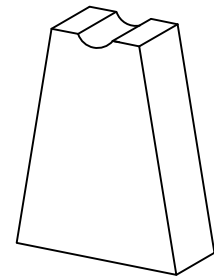
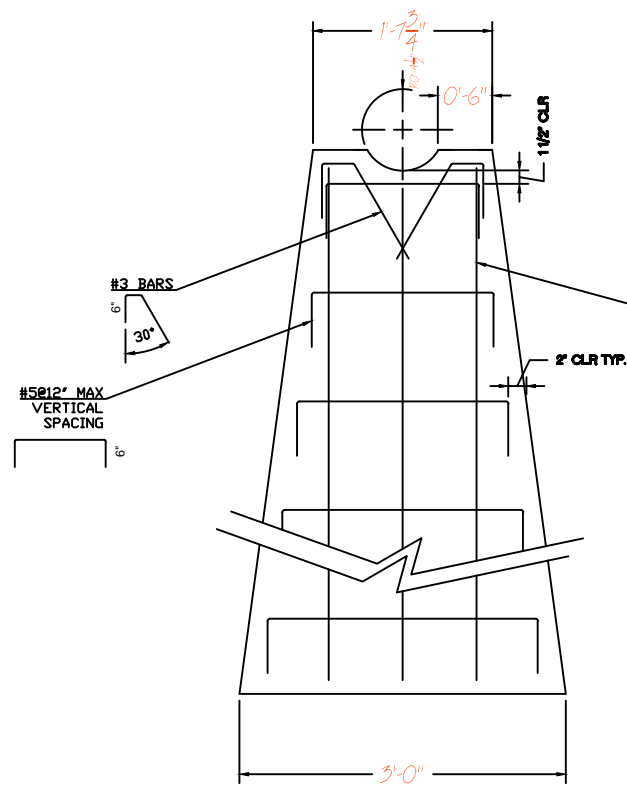


TOP VIEW
(REBAR NOT SHOWN)

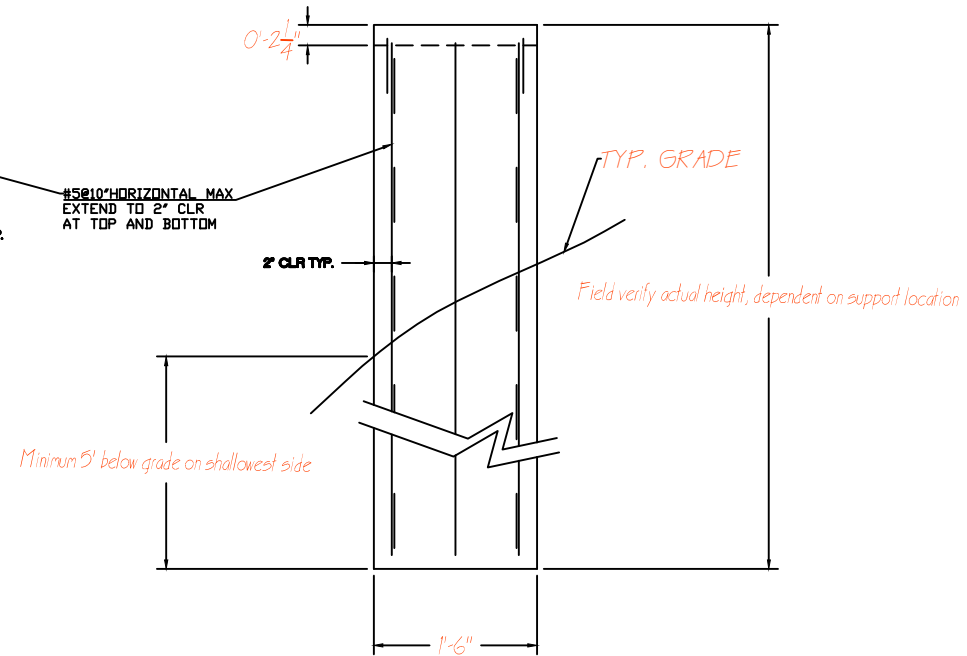
- NOTES
1. FORM $\frac{3}{4}$ " DEVEL ON ALL EXPOSED CORNERS OF SUPPORT.
 2. PROVIDE INFORMATION ON POURED-IN-PLACE OR DRILLED PIPE CLAMP ANCHORS TO VA PERSONNEL (COR) FOR APPROVAL.



ROUGH 3D VIEW



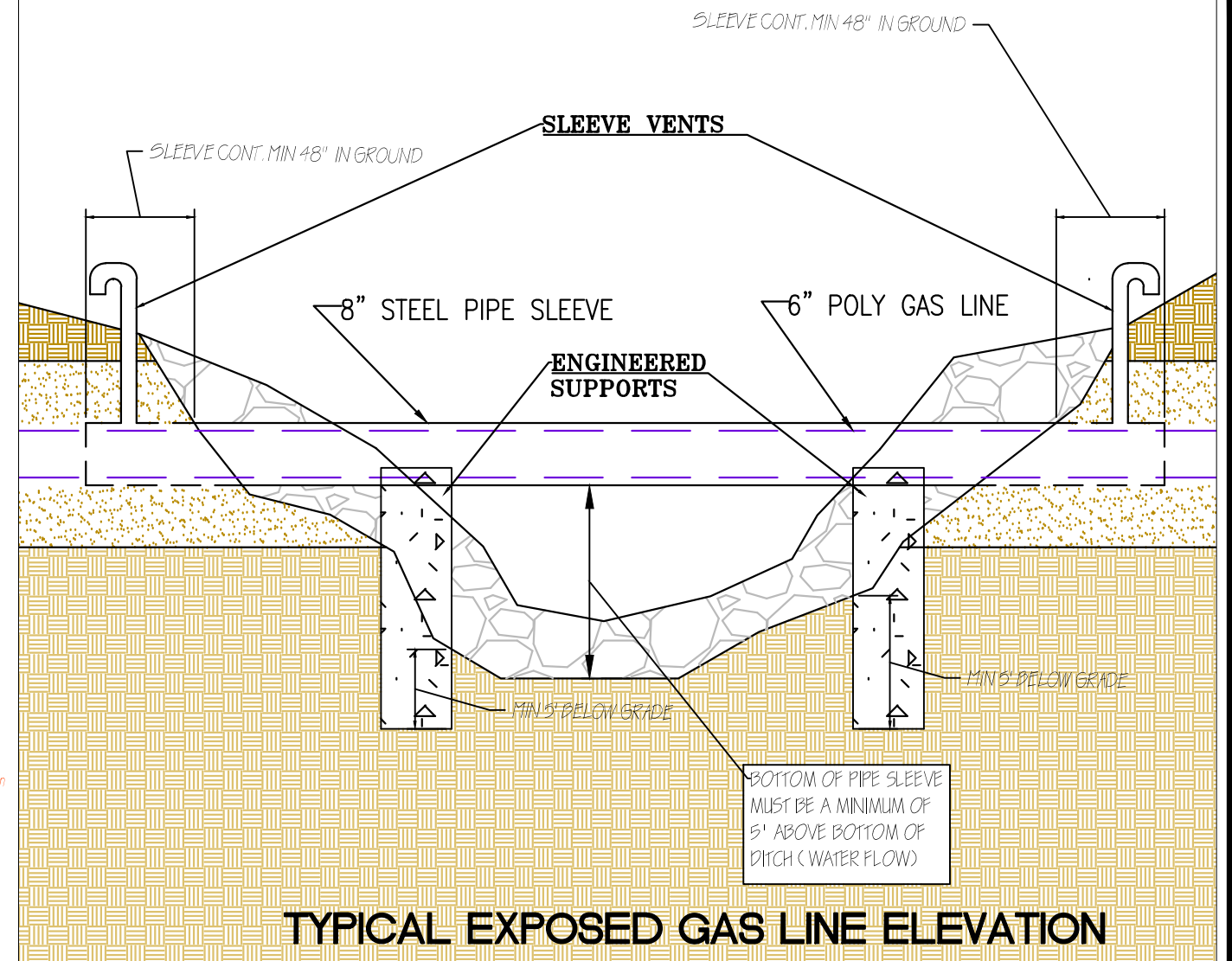
FRONT ELEVATION VIEW




SIDE ELEVATION VIEW

TYPICAL ENGINEERED CONCRETE PIPE SLEEVE SUPPORT NTS

VA WILL REVIEW OTHER PROSPECTIVE DESIGN ALTERNATIVES



TYPICAL EXPOSED GAS LINE ELEVATION

REVISIONS:	DATE	 <div>Dept. of Veterans Affairs Medical Center 1011 Honor Heights Drive Muskogee, OK. 74401</div>			APPROVED: Infectious Control Nurse-Lynia Snyder	APPROVED: Medical Center Director-Brian A. Hawkins	DRAWING TITLE SLEEVE SUPPORT DETAILS & TYPICAL DITCH ELEVATION	PROJECT TITLE MAIN GAS LINE	DATE March 1, 2012	SCALE NTS	DRAWING NO. S-4 DWG. 1 OF 1	DEPARTMENT OF VETERANS AFFAIRS
					APPROVED: Safety Manager-Charles Herrier	APPROVED: Associate Director-Bryan Matthews						
					APPROVED: President A.F.G.E. 2250-Jeff Cowan	APPROVED: Chief of Staff-Karen H. Gribbin						
						APPROVED: Chief Engineering Service-Jordan W. Benware						
							PROJECT NO. 623-12-108	CONTRACT NO.	DESIGNED BY:	DRAWN BY: AR	CHECKED BY: ar	LOCATION: JACK C. MONTGOMERY VA MEDICAL CENTER
							BUILDING NO.	AUTOCAD FILE NAME				