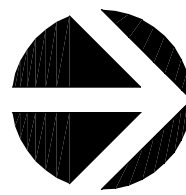
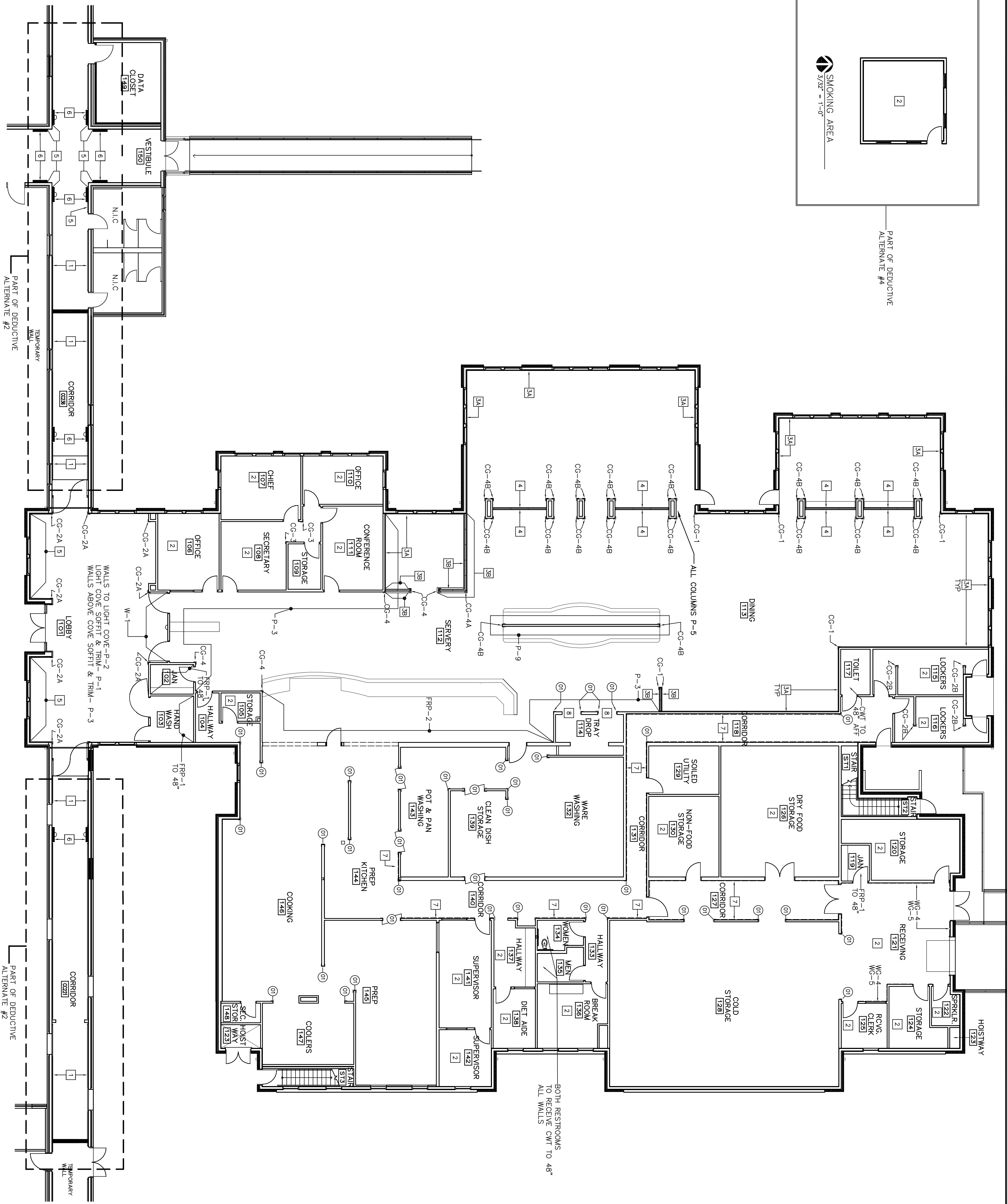
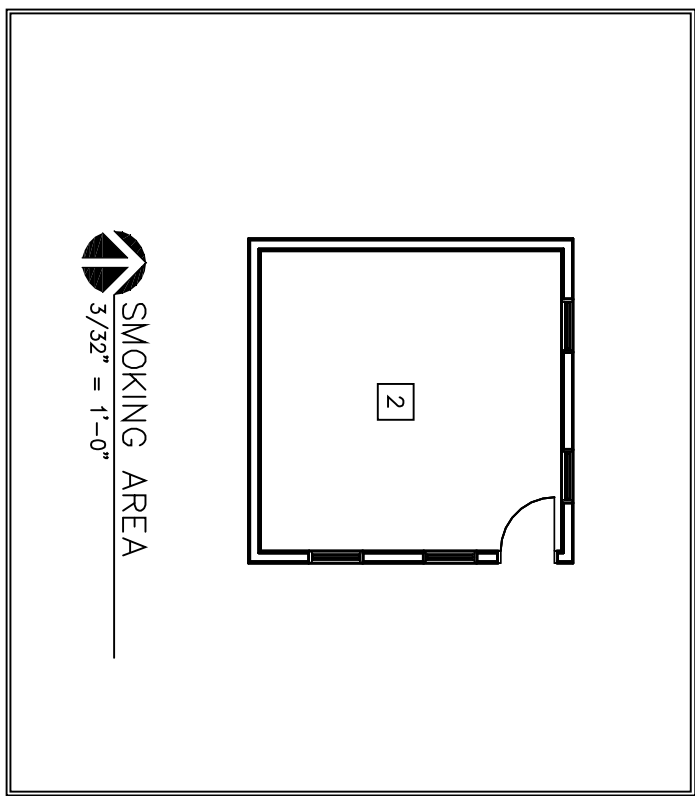


FLOOR FINISHES LEGEND	
WSF-1	MARBLE-PATTERNED SHEET VINYL WITH WELDED SEAMS AND INTEGRAL COVE BASE
WSF-1A	WSF-1A
WSF-1B	WSF-1B
WSF-1C	WSF-1C
WSF-2	WSF-2
WSF-3	WOOD-PATTERNED SHEET VINYL WITH WELDED SEAMS
RES	RESINOUS URETHANE MORTAR FLOORING
CP	MODULAR CARPET TILES
WM	MODULAR WALK-OFF MAT
C/S	CONCRETE - HARDENED AND SEALED
RST	RESILIENT STAR TREADS, RISERS AND SKIRTING
RB	4" RUBBER BASE
ICB	INTEGRAL COVE BASE

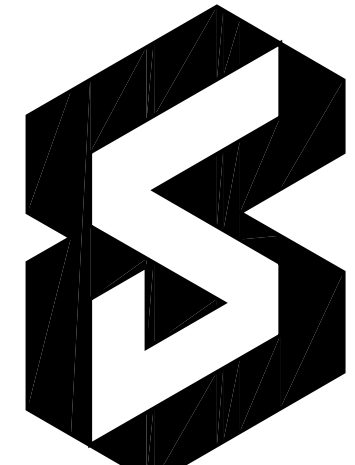


F1.2
3/27" = 1'-0"

DOUGLAS SNIDER ARCHITECT, P.C.

ARCHITECTURE
PLANNING
INTERIOR DESIGN
FACILITIES MANAGEMENT

MEMBER AMERICAN INSTITUTE OF ARCHITECTS
National Office: 1100 North 17th Street, Suite 100, Portland, Oregon 97204
Telephone: (503) 772-8888
Email: Doug@DouglasSnider.com



DEPARTMENT OF VETERANS AFFAIRS
SOUTHERN OREGON
REHABILITATION CENTER & CLINICS
8495 CRATER LAKE HIGHWAY
WHITE CITY, OREGON

DRAWING TITLE:
WALL FINISHES



GRAEFSTREET DESIGN GROUP
Interior Planning and Design
711 Piedford Center
Box 202
Piedford, OR 97304
541.777.0933
fax: 541.772.0933
www.graefstreetdesign.com

PROJECT TITLE: REPLACE NUTRITION & FOOD SERVICES
DRAWN BY: DATE: DRAWING NO.:
CHECK BY: VA PROJECT NO.: DWG. 2 OF 3
F1.2

US DEPARTMENT OF VETERANS AFFAIRS

LEGEND
WALL FINISHES
P PAINT - SEE SECTION 09 06 00 "SCHEDULE FOR FINISHES" FOR COLORS & GLOSS LEVELS.
W-1 28 OZ. VINYL-COATED FABRIC WALL COVERING
W-2 20 OZ. VINYL-COATED FABRIC WALL COVERING (MAY BE PART OF DEDUCTIVE ALTERNATE #5)
FRP-1 FIBERGLASS REINFORCED PLASTIC PANELS - SMOOTH TEXTURE FULL-HT.
FRP-2 DECORATIVE FIBERGLASS REINFORCED PLASTIC PANELS FULL-HT.
NOTE: FOR LOCATIONS OF FRP IN FOOD SERVICE AREAS SEE FINISH SCHEDULE A3.1 - FRP TO 8'-0" A.F.F. IN THESE AREAS

RSW-1 WAINSCOT SYSTEM CONSISTING OF GLUED-UP RIGID SHEET WALL COVERING WITH HORIZONTAL AND VERTICAL ENGINEERED MOLDINGS (E.M.)
RSW-2 RIGID SHEET WALL COVERING USED FOR 6" BASE AT CORRIDOR PLASTER
CWT CERAMIC WALL TILE WAINSCOT TO 48" A.F.F. ALL WALLS

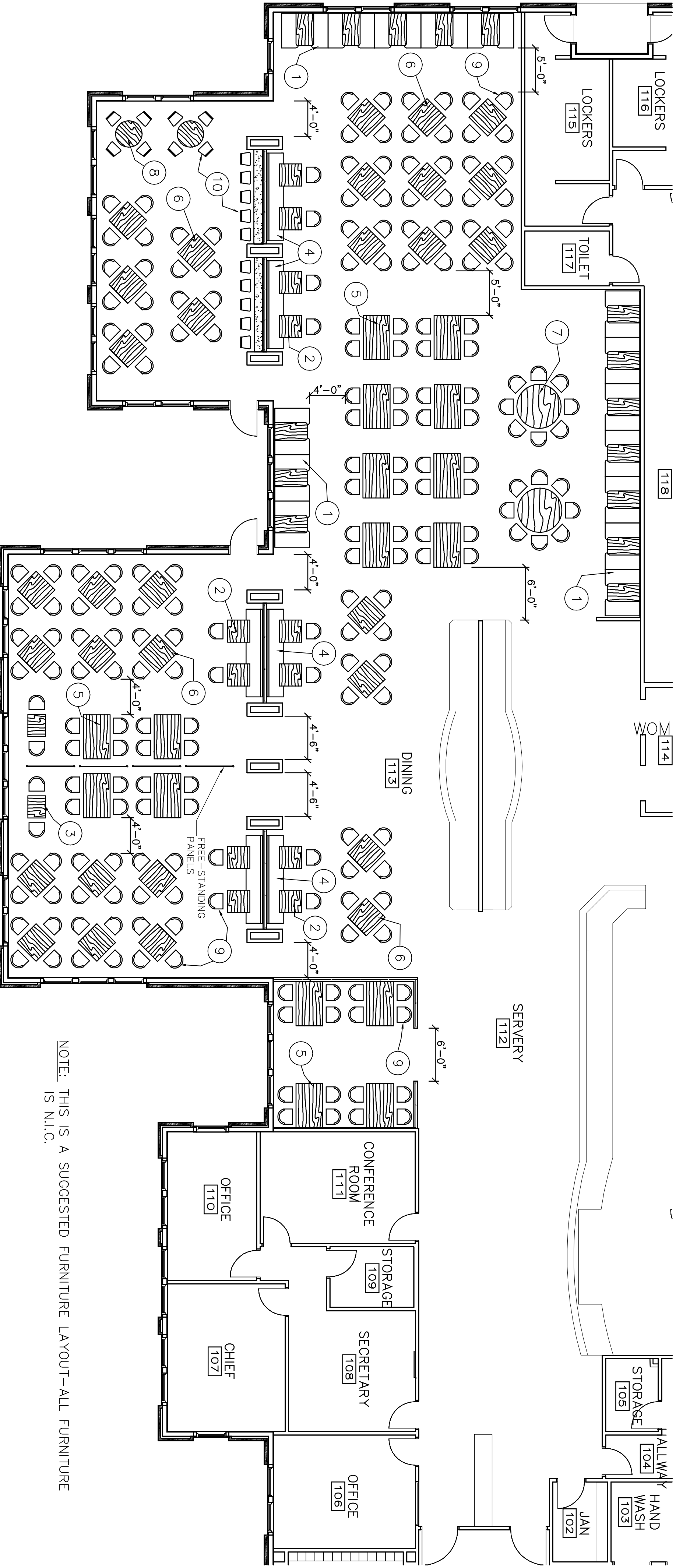
WALL PROTECTION (PART OF DEDUCTIVE ALTERNATE #5)

CO-1 2" X 2" X 3/8" 90° CORNER GUARD - FIELD CUT TO FIT BETWEEN WG-1 (CRASH RAIL) & WG-2 (ACCENT RAIL)
CO-2 2" X 2" X 3/8" 90° CORNER GUARD - MOUNT @ TOP OF BASE/TRIM TO 36" A.F.F. (EXCEPT IN LOCKERS 115/116)
A&B DENOTE DIFFERENT COLORS - SEE 09 06 00 "SCHEDULE FOR FINISHES"
CO-3 2" X 2" X 3/8" 90° CORNER GUARD. MOUNT AT THE FINISHED FLOOR
CO-4 2" X 2" X 48" 90° CORNER GUARD. MOUNT @ TOP OF BASE/WG-2 & FIELD CUT TO ALIGN W/TOP OF WG-1
A&B DENOTE DIFFERENT COLORS - SEE 09 06 00 "SCHEDULE FOR FINISHES"

(0) STAINLESS STEEL CORNER GUARD - INCLUDED IN FOOD SERVICE DRAWINGS AND SPECIFICATIONS.
HR ROUND STAINLESS STEEL HANDRAIL W/ATTACHED CRASH RAIL - TOTAL HEIGHT 36"
WG-1 4" RIGID CRASH RAIL W/WOOD GRAIN VINYL COVER 1-1/8" X 1-1/8" IMPACT RESISTANT ACCENT RAIL @ TOP OF INTEGRAL COVE BASE WHERE SHOWN ON ELEVATIONS
WG-2 STAINLESS STEEL CRASH RAIL @ 36"A.F.F.
WG-4 HEAVY DUTY STAINLESS STEEL CRASH RAIL @ TOP OF RES IOB
WG-5

MISCELLANEOUS
W-1 WOOD TRIM ABOVE INTEGRAL-COVED BASE
W-1 CORRIDORS CC236, CC221, AND LOBBY 100.

NOTES (THE FOLLOWING MAY BE INCLUDED IN PARTS OF DEDUCTIVE ALTERNATE #2 AND/OR #5)
1 TYPICAL CONDITION - SEE DETAIL B9, SHEET A10.7
- HR @ 36"
- RSW-1/FM BELOW HANDRAIL
- W-1 ABOVE HANDRAIL
- WT-1 HARDWOOD TRIM @ TOP OF INTEGRAL COVE BASE
2 SEE SECTION 09 06 00 "SCHEDULE FOR FINISHES" FOR PAINT TYPES & COLORS IN THESE ROOMS.
3A TYPICAL CONDITION - SEE ELEVATION SHEETS A8.3 & A8.4
- WG-1 @ 42" AFF (VERIFY)
- W-2 BELOW CRASHRAIL/P-3 ABOVE@ FULL-HT. WALLS
- WG-2 @ TOP OF 4" INTEGRAL COVE BASE
3B TYPICAL CONDITION - SAME AS 3A EXCEPT 18" ACRYLIC PANELS MOUNTED TO TOP OF HALF WALLS
4 TYPICAL CONDITION - SEE ELEVATION A1, SHEET A8.4
- WG-1 @ 42" AFF (VERIFY)
- W-2 BELOW, NO WALL GUARD @ BASE
- ACRYLIC PANELS MOUNTED ON TOP OF HALF-WALLS
5 TYPICAL CONDITION - SEE DETAIL B, SHEET A10.7
- WG-1 TO 34" AFF, P-1 ABOVE
- RSW-1/FM BELOW WG-1
- WT-1 HARDWOOD TRIM @ TOP OF INTEGRAL COVE BASE
6 TYPICAL CONDITION - SEE ELEVATIONS A4.3
- P-2 ALL SIDES OF PLASTER & SOFTIE
- NO IOB, 6" BASE OF .040" RIGID SHEET (RSW-2)
- CO-3 CORNER GUARD FROM FINISHED FLOOR
7 TYPICAL CONDITION - BETWEEN FULL HT SS CORNER GUARDS (01)
- WG-4 STAINLESS STEEL CRASH RAIL @ 36" A.F.F.
- FRP-1 BETWEEN WG-4 & WG-5
----DASHED LINE INDICATES EXTENT OF ABOVE FINISHES
8 SEE 09 06 00 "SCHEDULE FOR FINISHES" FOR COMPLETE LIST OF DOOR FRAME PROTECTORS.
FOOD SERVICE AREAS NOT INCLUDED ON THIS DRAWING ARE PART OF THE FOOD SERVICE DESIGNER DRAWINGS AND SPECIFICATIONS.

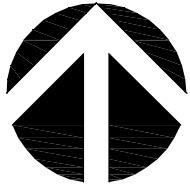


NOTE: THIS IS A SUGGESTED FURNITURE LAYOUT-ALL FURNITURE IS N.I.C.

FURNITURE AND FIXTURES LEGEND

SYM	DESCRIPTION	QTY
1	LAMINATED PLASTIC RESTAURANT BOOTH 47" WIDE X 63" LONG - EACH ONE SEATS 4	15
2	30" X 30" TABLE	12
3	24" X 30" TABLE	2
4	LAMINATED PLASTIC BENCH W/PADDED BACK 119" X 22" - EACH ONE SEATS 2	6
5	30" X 60" TABLE	16
6	36" X 36" TABLE (Some of these should be ordered as ADA height)	30
7	60" DIAMETER TABLE	2
8	36" DIA X 40-42" HIGH BISTRO TABLE	2
9	ARMLESS DINING CHAIR (Stocking?)	216
10	30-36" HIGH BISTRO STOOL	18

TOTAL SEATING CAPACITY: 306



FURNITURE AND FIXTURES PLAN
1/8" = 1'-0"

REVISIONS	DATE

DOUGLAS SNIDER ARCHITECT, P.C.

ARCHITECTURE

PLANNING

INTERIOR DESIGN

FACILITIES MANAGEMENT

MEMBER AMERICAN INSTITUTE OF ARCHITECTS

711 Medford Center
Box 202
Medford, Oregon 97504

541.772.0373

541.772.0373

www.douglasarchitect.com

DEPARTMENT OF VETERANS AFFAIRS

SOUTHERN OREGON
REHABILITATION CENTER & CLINICS

8495 CRATER LAKE HIGHWAY
WHITE CITY, OREGON

DRAWING TITLE:

FURNITURE
AND FIXTURES

GRAPESTREET DESIGN GROUP
Interior Planning and Design
711 Medford Center
Box 202
Medford, OR 97504
541.772.0373
541.772.0373
www.grapestreetsdesign.com

PROJECT TITLE

REPLACE NUTRITION &
FOOD SERVICES

DRAWN BY: NLM

DATE: 01JUN11

DRAWING NO.: F2.1

CHECK BY: VA PROJECT NO.: 692-338

DWG. 3 OF 3