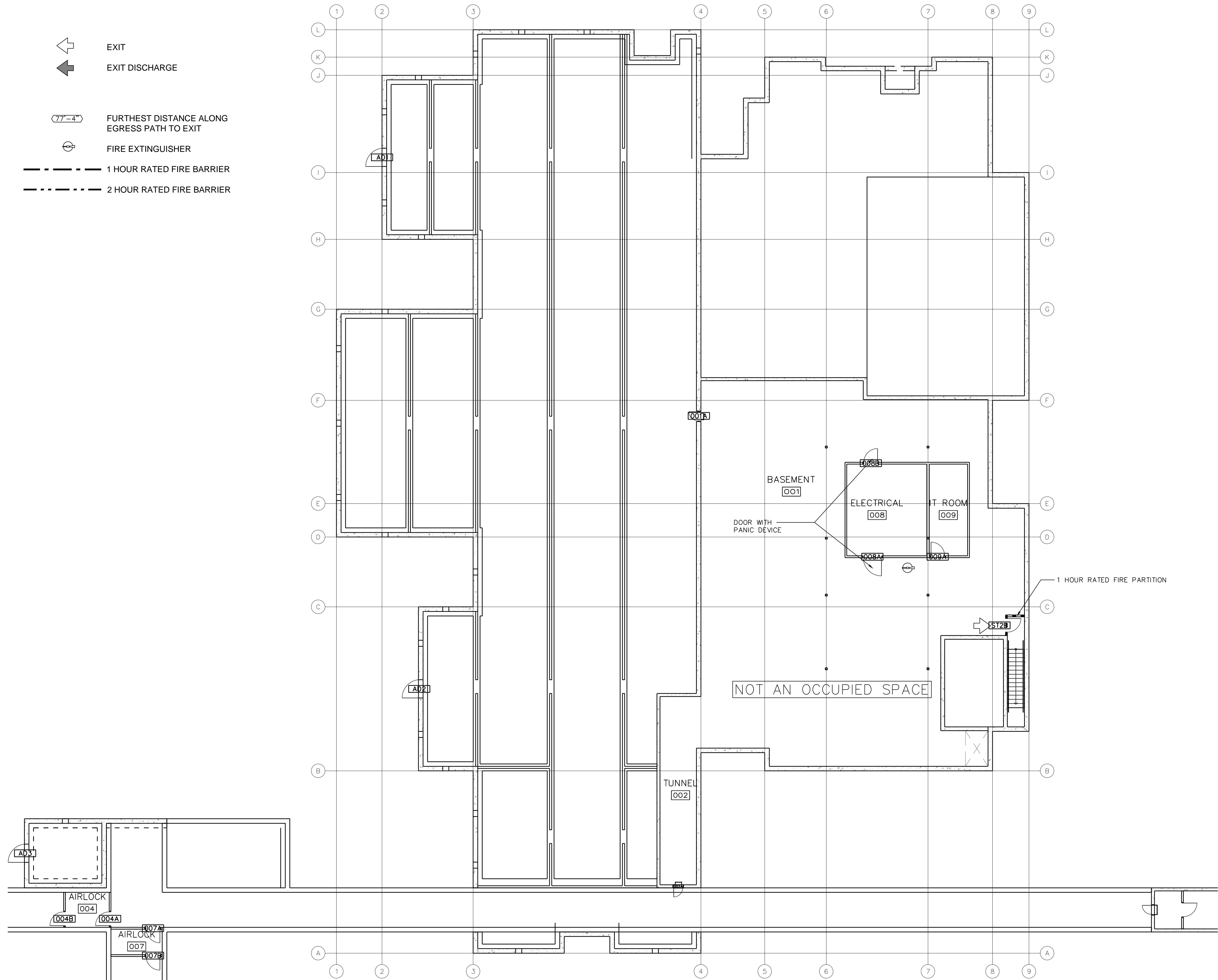


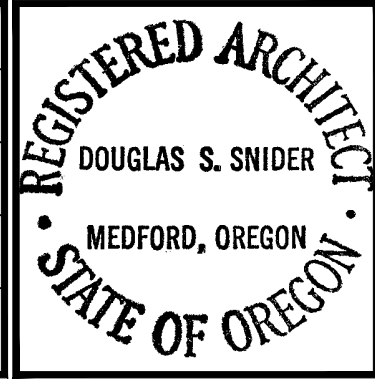


R:\\_Projects\VA Kitchen\CAD\LIFE SAFETY.dwg May 27, 2011 - 3:28pm

- EXIT  
EXIT DISCHARGE  
FURTHEST DISTANCE ALONG  
EGRESS PATH TO EXIT  
FIRE EXTINGUISHER  
1 HOUR RATED FIRE BARRIER  
2 HOUR RATED FIRE BARRIER



REVISIONS	DATE



**DOUGLAS SNIDER ARCHITECT, P.C.**

ARCHITECTURE  
PLANNING  
INTERIOR DESIGN  
FACILITIES MANAGEMENT

MEMBER AMERICAN INSTITUTE OF ARCHITECTS

45 Hawthorne  
Medford, Oregon 97504

Web site: www.DouglasSnider.com  
E-mail: Doug@DouglasSnider.com

Telephone (541) 772-5203  
FAX (541) 772-9408

**DEPARTMENT OF VETERANS AFFAIRS**

**SOUTHERN OREGON  
REHABILITATION CENTER & CLINICS**

8495 CRATER LAKE HIGHWAY  
WHITE CITY, OREGON

DRAWING TITLE:

**LIFE SAFETY PLAN - BASEMENT**

PROJECT TITLE **REPLACE NUTRITION &  
FOOD SERVICES**

DRAWN BY: DSS DATE: 1JUN11 DRAWING NO.: **LS1.2**

CHECK BY: RJS VA PROJECT NO.: 692-338 DWG. 2 OF 2

US DEPARTMENT OF  
VETERANS AFFAIRS