

one eighth inch = one foot
0 4 8 16

one quarter inch = one foot
0 4 8

three eighths inch = one foot
0 4 8

one half inch = one foot
0 4

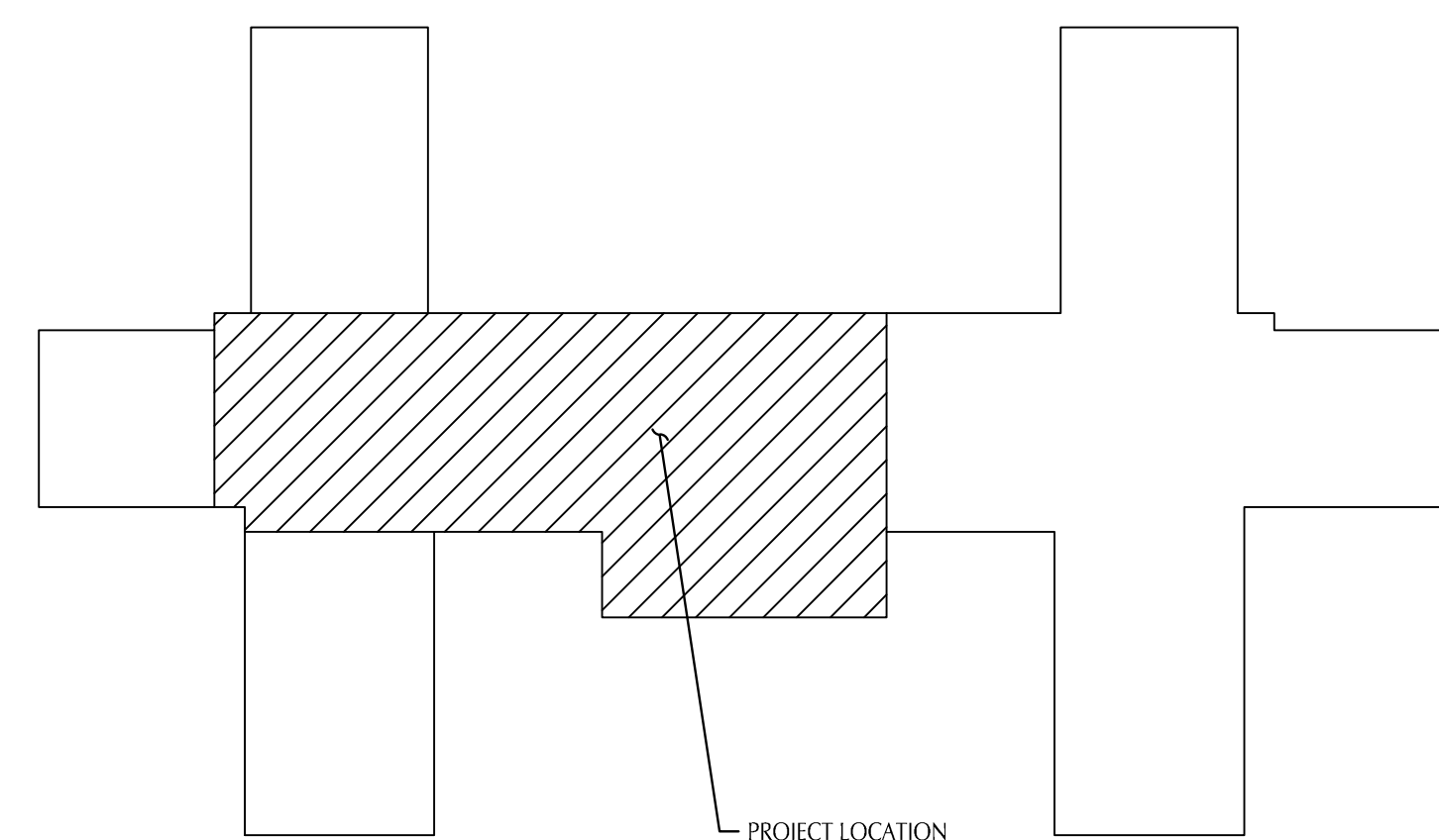
three quarters inch = one foot
0 4

one inch = one foot
0 6"

two inches = one foot
0 6"

three inches = one foot
0 6"

Drawing Index



Director
Associate Director
Chief of Staff
Associate Director for N&PCS
Chief of Police
Chief of Engineering
Safety Manager
Infection Control Nurse
Patient Safety
AFGE
Energy Engineer
Privacy Officer
Imaging Supervisor

1	G001	Cover and Index
2	A100	Architectural Plans
3	P001	Plumbing Cover Sheet
4	P101	Plumbing Plans Sub-Basement through Fourth Floor
5	P102	Plumbing Plans Fifth Floor through Seventh Floor
6	E101	Electrical Plans

---	---
---	---
---	---
---	---
---	---
---	---
100% Construction Documents	6/15/16
95% Review Documents	09/02/15
Revisions:	Date



NORTHERN
DESIGN
WORKS

 Department of
Veterans Affairs

one eighth inch = one foot
one quarter inch = one foot
three eighths inch = one foot
one half inch = one foot
three quarters inch = one foot
one inch = one foot
one and one half inches = one foot
two inches = one foot
three inches = one foot
four inches = one foot
five inches = one foot
six inches = one foot
seven inches = one foot
eight inches = one foot
nine inches = one foot
ten inches = one foot
eleven inches = one foot
twelve inches = one foot
thirteen inches = one foot
fourteen inches = one foot
fifteen inches = one foot
sixteen inches = one foot
seventeen inches = one foot
eighteen inches = one foot
nineteen inches = one foot
twenty inches = one foot
twenty one inches = one foot
twenty two inches = one foot
twenty three inches = one foot
twenty four inches = one foot
twenty five inches = one foot
twenty six inches = one foot
twenty seven inches = one foot
twenty eight inches = one foot
twenty nine inches = one foot
thirty inches = one foot
thirty one inches = one foot
thirty two inches = one foot
thirty three inches = one foot
thirty four inches = one foot
thirty five inches = one foot
thirty six inches = one foot
thirty seven inches = one foot
thirty eight inches = one foot
thirty nine inches = one foot
forty inches = one foot
forty one inches = one foot
forty two inches = one foot
forty three inches = one foot
forty four inches = one foot
forty five inches = one foot
forty six inches = one foot
forty seven inches = one foot
forty eight inches = one foot
forty nine inches = one foot
fifty inches = one foot
fifty one inches = one foot
fifty two inches = one foot
fifty three inches = one foot
fifty four inches = one foot
fifty five inches = one foot
fifty six inches = one foot
fifty seven inches = one foot
fifty eight inches = one foot
fifty nine inches = one foot
sixty inches = one foot
sixty one inches = one foot
sixty two inches = one foot
sixty three inches = one foot
sixty four inches = one foot
sixty five inches = one foot
sixty six inches = one foot
sixty seven inches = one foot
sixty eight inches = one foot
sixty nine inches = one foot
seventy inches = one foot
seventy one inches = one foot
seventy two inches = one foot
seventy three inches = one foot
seventy four inches = one foot
seventy five inches = one foot
seventy six inches = one foot
seventy seven inches = one foot
seventy eight inches = one foot
seventy nine inches = one foot
eighty inches = one foot
eighty one inches = one foot
eighty two inches = one foot
eighty three inches = one foot
eighty four inches = one foot
eighty five inches = one foot
eighty six inches = one foot
eighty seven inches = one foot
eighty eight inches = one foot
eighty nine inches = one foot
ninety inches = one foot
ninety one inches = one foot
ninety two inches = one foot
ninety three inches = one foot
ninety four inches = one foot
ninety five inches = one foot
ninety six inches = one foot
ninety seven inches = one foot
ninety eight inches = one foot
ninety nine inches = one foot
one hundred inches = one foot

Keynotes

1. Not used.
2. Install new edge angle and grating in shaft floor opening per detail 1/A100. Grating span as shown. Field verify all penetrations and fit grating around existing pipe, conduits and duct.
3. Not used.
4. Existing 20" x 22 duct.
5. Existing 20" x 28 duct.
6. Existing 26" x 28 duct.
7. Remove existing plaster ceiling and supports. Install new suspended acoustical tile ceiling.
8. Install grid and ceiling tile with clips vertically to match existing window head.

Symbol Legend

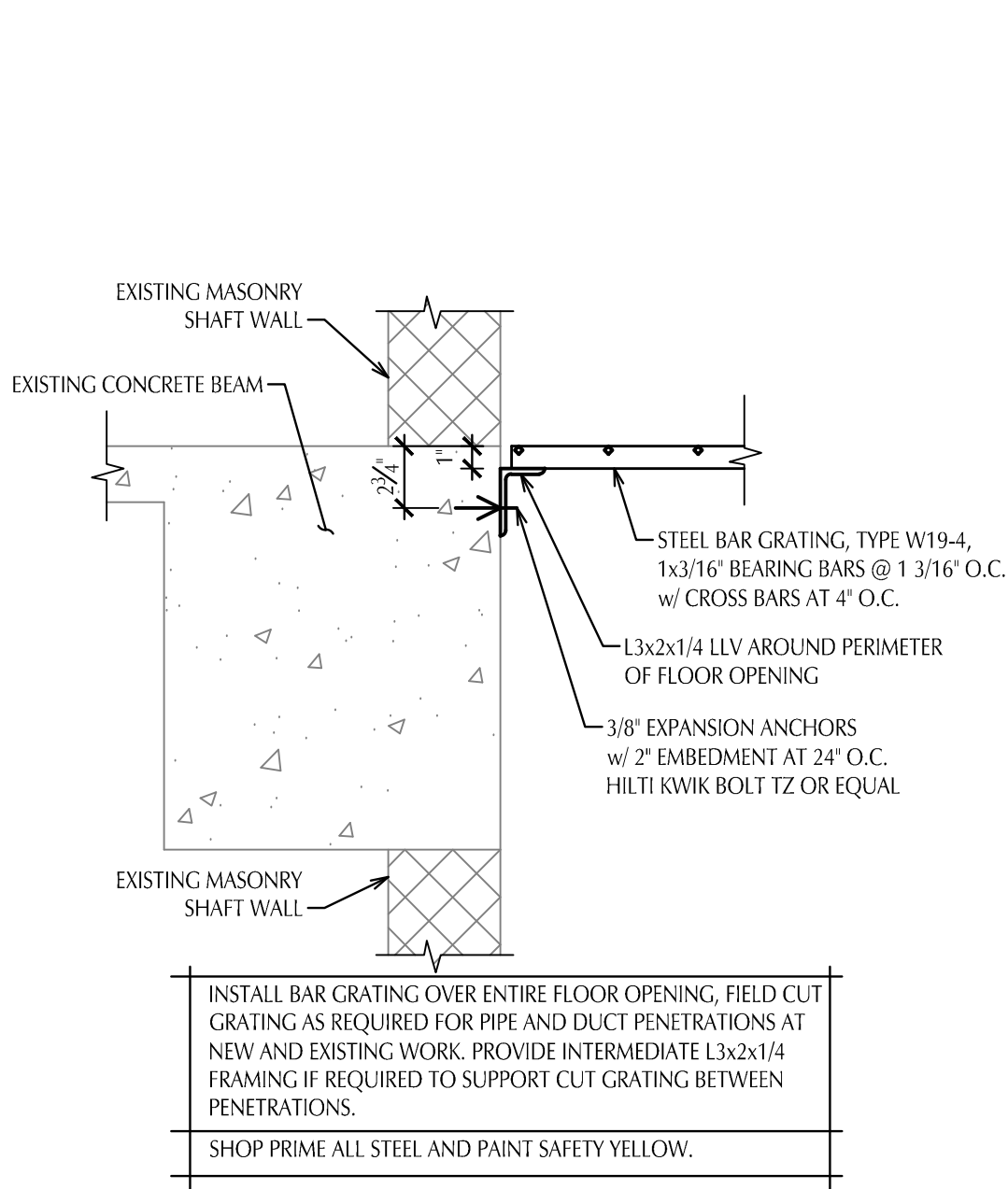
- FIRE PROTECTION SPRINKLER HEAD - CONCEALED
- FIRE PROTECTION SPRINKLER HEAD - SIDEWALL
- TROFFER STYLE FIXTURE, 2x4
- TROFFER STYLE FIXTURE, 2x2
- OCCUPANCY SENSOR

General Notes

1. Light lines indicate existing work to remain, darker lines indicate new work.
2. Field verify all dimensions and clearances before beginning construction.
3. All penetrations through fire or smoke rated partitions shall be sealed per specification section 07 84 00.
4. Remove all abandoned hangers, ceiling supports, etc. above ceilings in project area.
5. Floor structure is two-hour fire rated construction. Maintain fire rating and provide fire stopping at all penetrations.
6. All work performed in corridors outside of limited access areas shall be performed outside of normal business hours. Areas of corridor work shall be cleaned before normal business hours.
7. Contractor shall remove and replace suspended acoustical tile ceiling where required to route new piping. Any ceiling tile which are damaged shall be replaced with new tile to match existing.

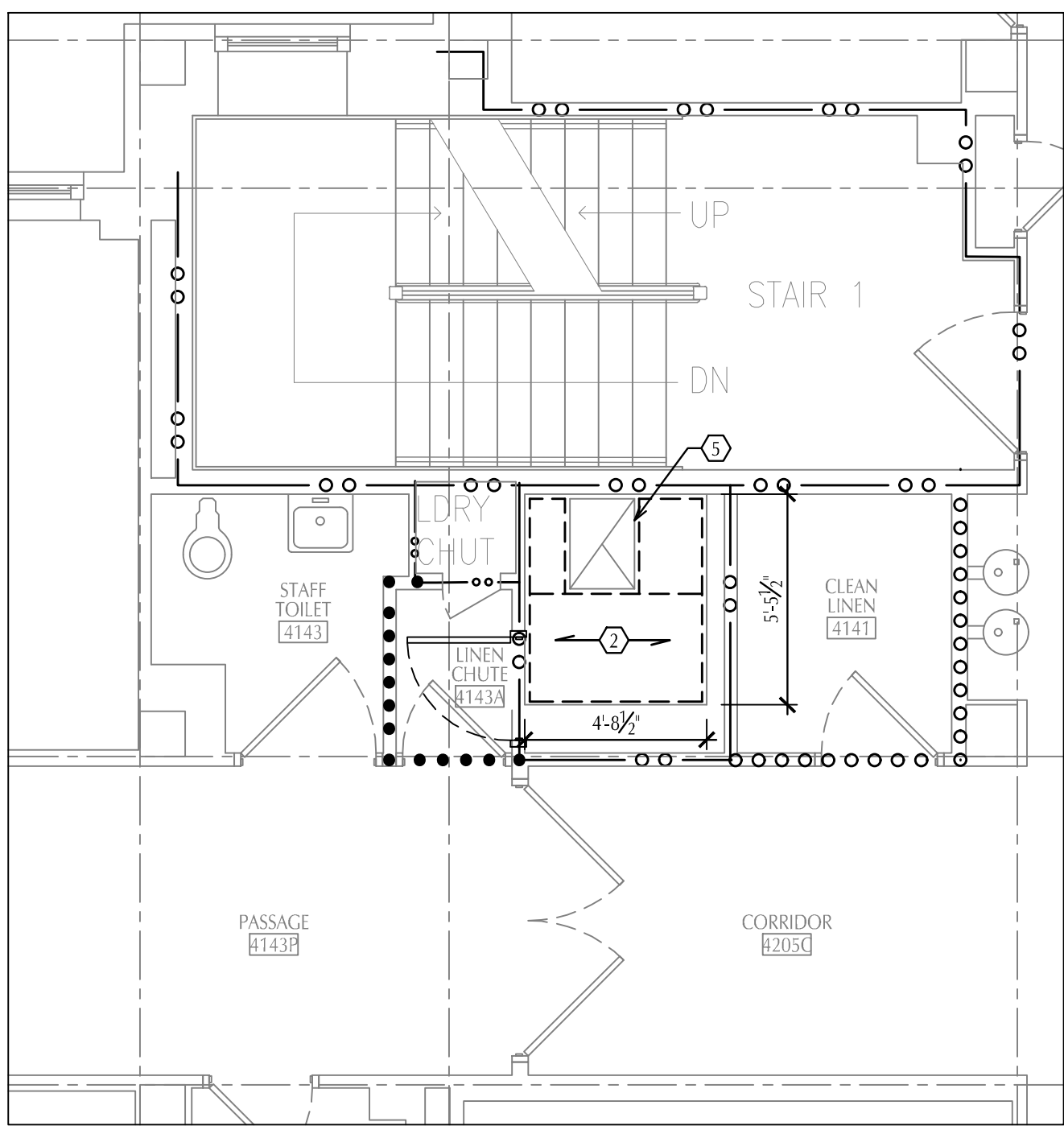
SMOKE/ FIRE/ RATED PARTITION TYPES

- SMOKE RESISTIVE WALL
- SMOKE BARRIER WITH ONE HOUR FIRE RATING
- ONE HOUR FIRE RATED WALL
- TWO HOUR FIRE RATED WALL



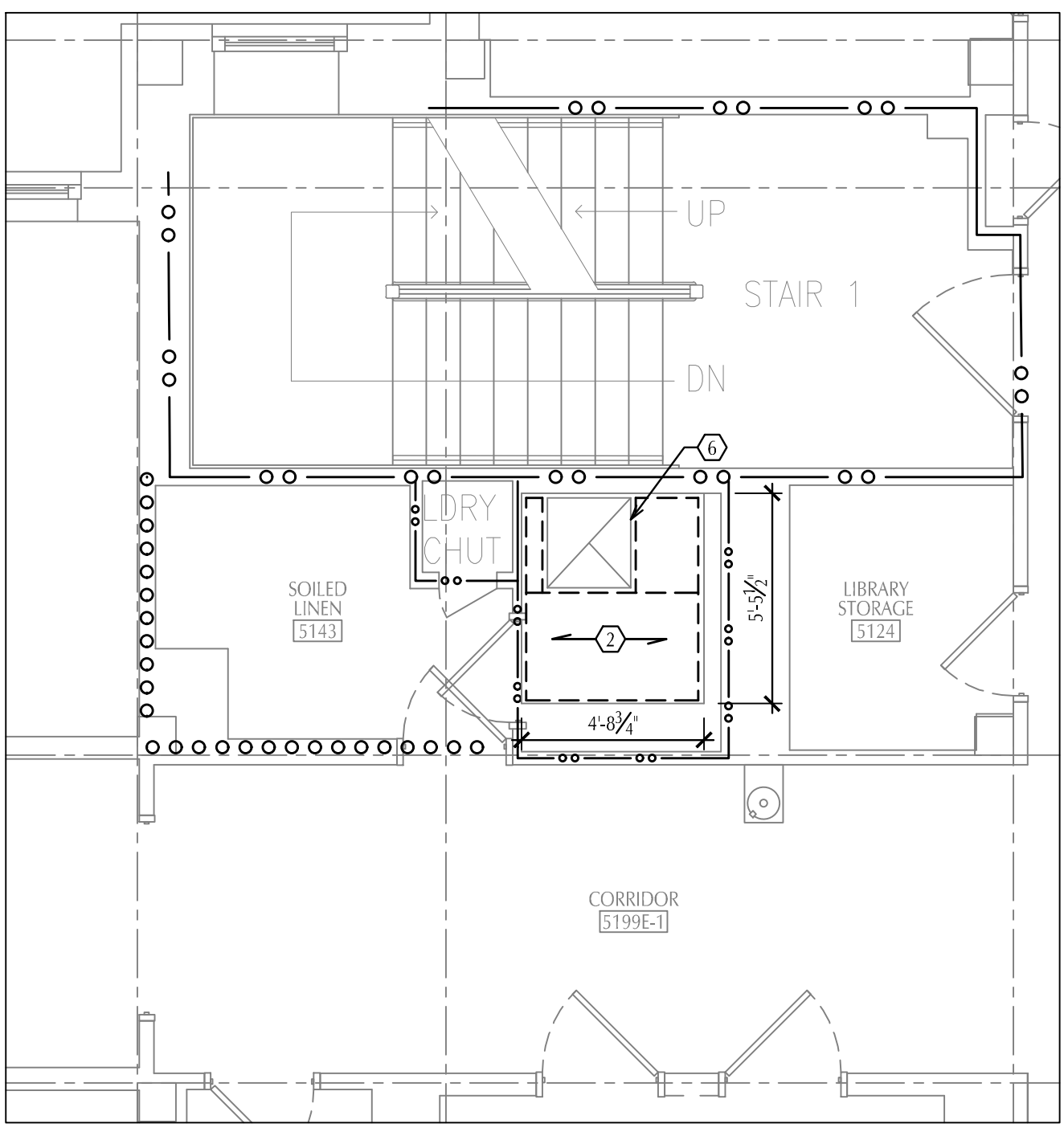
Shaft Floor
Grating Detail
SCALE: 1 1/2" = 1'-0"

1
A100



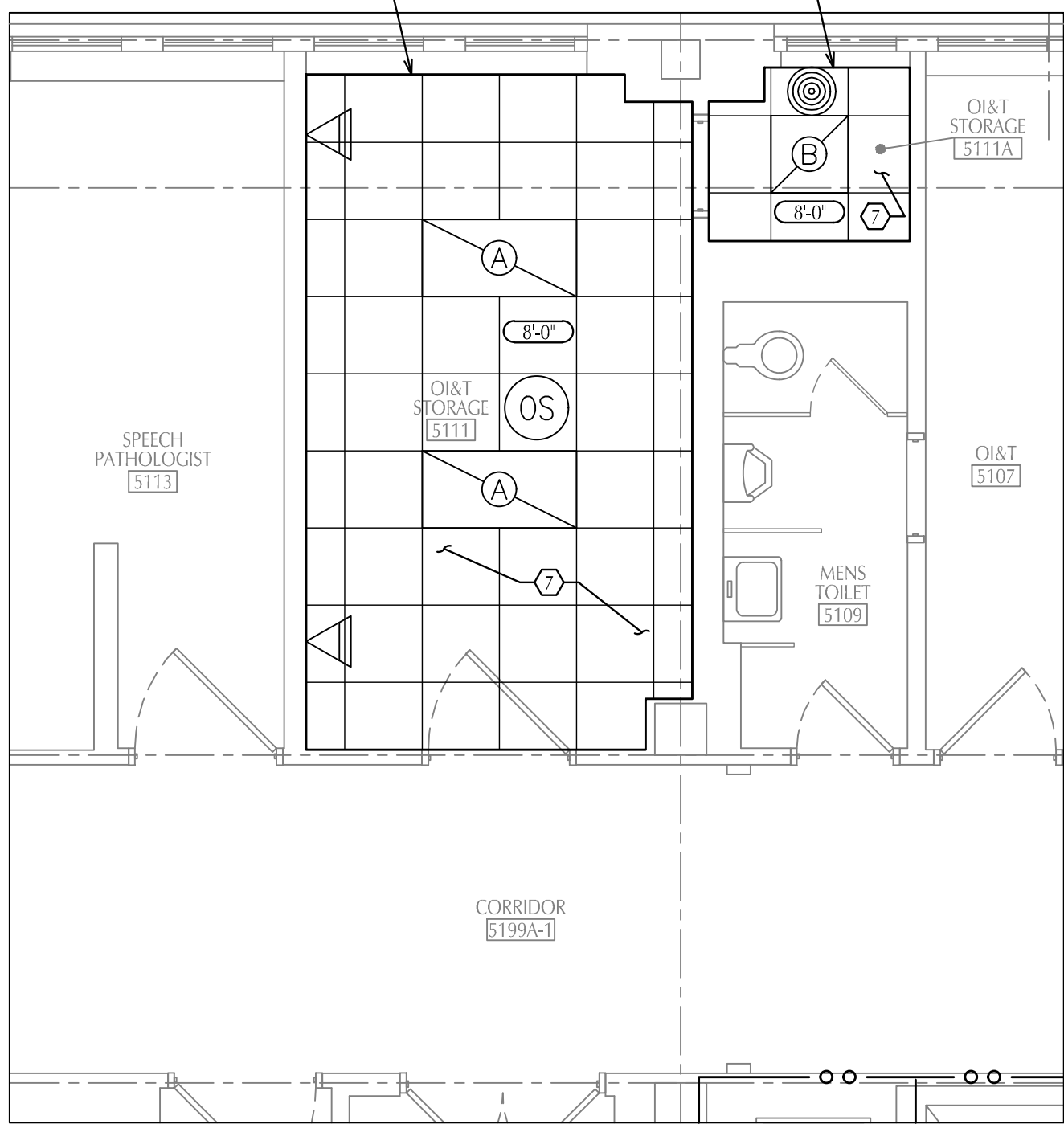
Partial Fourth
Floor Plan
SCALE: 1/4" = 1'-0"

N



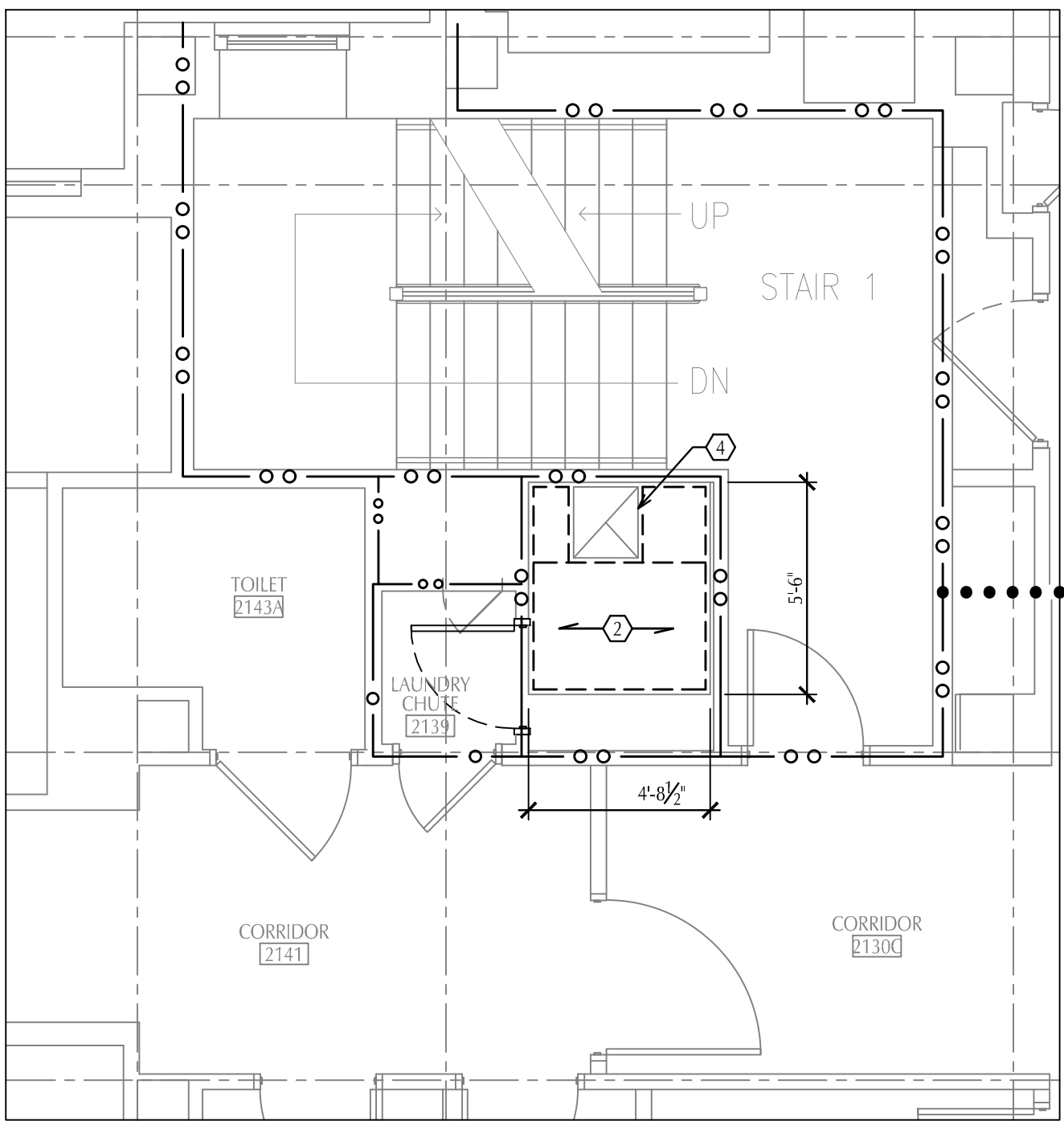
Partial Fifth Floor
Plan - Shaft Area
SCALE: 1/4" = 1'-0"

N



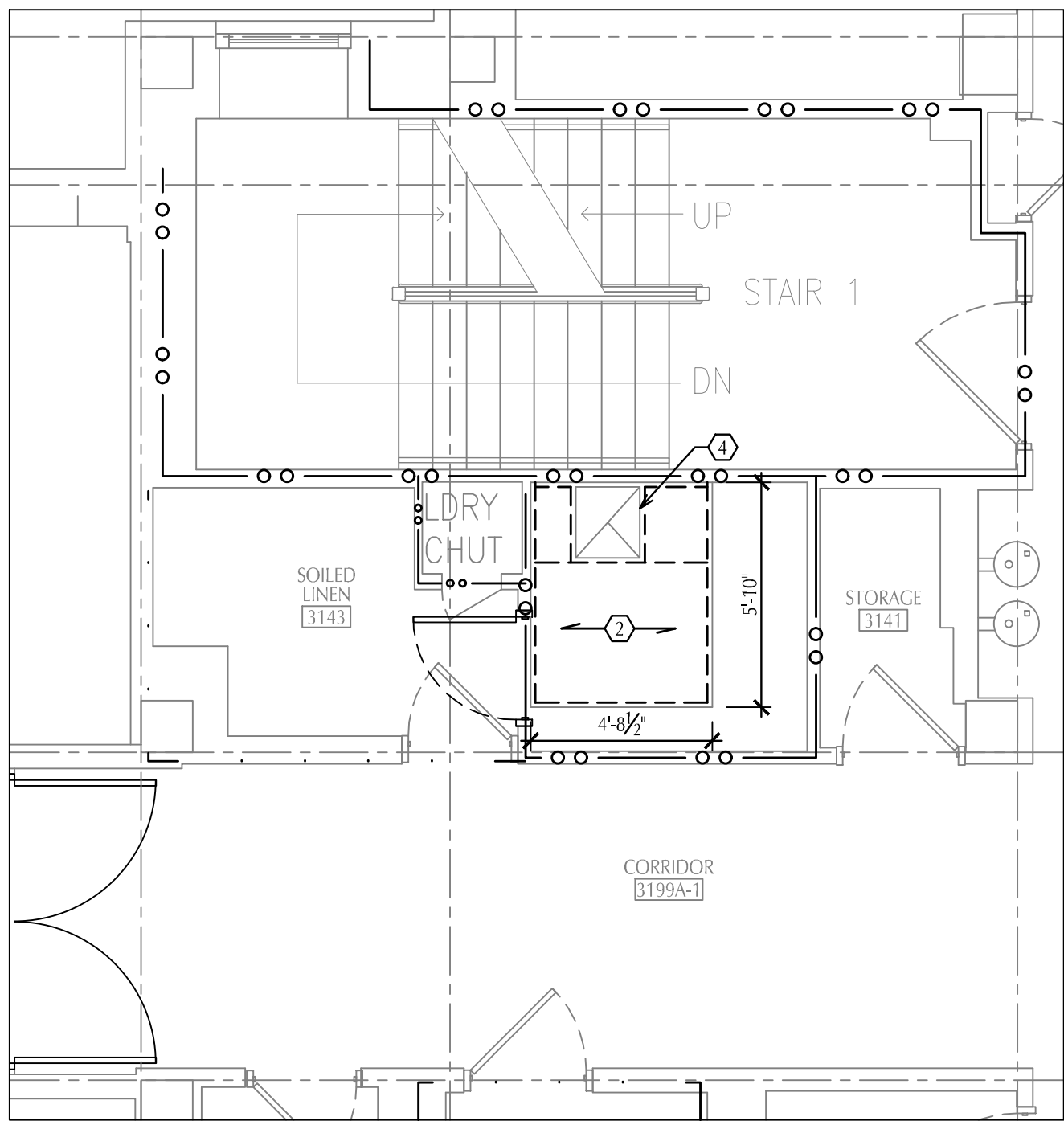
Partial Fifth Floor
Plan
SCALE: 1/4" = 1'-0"

N



Partial Second
Floor Plan
SCALE: 1/4" = 1'-0"

N



Partial Third
Floor Plan
SCALE: 1/4" = 1'-0"

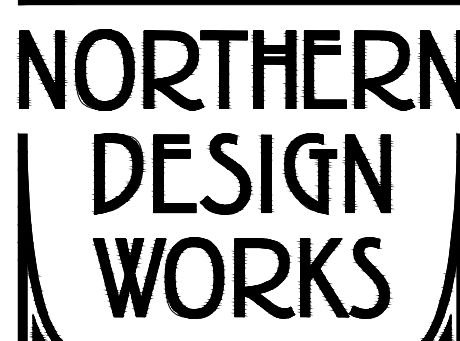
N

CONSULTANTS:



engineers | consultants | commissioning
MEP Associates, LLC | 2720 Arbor Court | Eau Claire, WI 54601
Phone: 715.832.5680 | Fax: 715.832.5688 | www.mepassociates.com
MEP PROJECT NO.: NDW-14-04

ARCHITECT/ENGINEERS:



420 RAIL STREET
NEGAUNEE, MI 49866
PHONE: 906-475-6616
NDW PROJECT NUMBER: 1414

Drawing Title
Architectural Plans

Approved Project Director

Project Title
Upgrade Domestic Water
5th + 6th Floors

Location
IRON MOUNTAIN, MICHIGAN

Date
6-15-2016

Checked
RU

Drawn
RU

Project Number
585-14-112

Building Number
1

Drawing Number
A100

Dwg. 2 of 6

Office of
Construction
and Facilities
Management

Department of
Veterans Affairs



GENERAL PLUMBING NOTES

1. THESE DRAWINGS SHALL NOT BE SCALED. SEE ARCHITECTURAL/CIVIL DRAWINGS FOR DIMENSIONAL INFORMATION. THIS ENGINEER WILL NOT BE RESPONSIBLE FOR MISCALCULATED PRODUCT TAKE-OFFS DUE TO SCALING OF DRAWINGS.
2. CONTRACTOR SHALL BE RESPONSIBLE FOR PROVIDING ALL NECESSARY FITTINGS AS REQUIRED BY ALL APPLICABLE CODES AND GOVERNING AUTHORITIES. VALVES AND FITTINGS SHALL BE OF SAME SIZE AS THE LINES TO WHICH THEY ARE LOCATED, UNLESS OTHERWISE INDICATED ON DRAWINGS.
3. CONTRACTOR SHALL COORDINATE ALL WORK WITH OTHER TRADES.
4. CONTRACTOR SHALL BE RESPONSIBLE FOR MAINTAINING FIRE RATING AND WEATHERPROOFING INTEGRITY OF ALL PIPING AND PENETRATIONS.
5. ALL WATER SUPPLY LINES SHALL BE RUN AS CLOSE TO PLANS AS POSSIBLE WITH NO CHANGES IN SIZING.
6. CONTRACTOR SHALL GIVE 24 HOUR NOTICE IN WRITING TO, AND RECEIVE WRITTEN APPROVAL, FROM THE BUILDING ADMINISTRATOR (OR OWNER REPRESENTATIVE) PRIOR TO SHUT DOWN OF ANY SYSTEM OR DISRUPTION OF SERVICE TO ANY AREA. CONTRACTOR SHALL ALSO COORDINATE THE EXACT LOCATION AND TIMING OF SYSTEM(S) SHUTDOWN POINTS WITH THE OWNER REPRESENTATIVE (I.E., ENGINEERING DEPARTMENT) CONTRACTOR SHALL MAKE EVERY EFFORT POSSIBLE TO MINIMIZE THE DURATION OF ANY DOWNTIME OR DISRUPTION PERIOD.
7. ROUTE ALL PIPING CONCEALED ABOVE CEILINGS, PAINTED WALLS, OR IN CHASES. PIPING EXPOSED SHALL BE SLOPED AND WAITED TO MATCH ARCHITECTURAL FINISHES. PIPING IN MECHANICAL ROOMS MAY BE EXPOSED.
8. CONTRACTOR SHALL INSTALL DIELECTRIC UNIONS AT CONNECTIONS OF DISSIMILAR METALS.
9. ALL PIPING SHALL BE INSTALLED AS HIGH AS POSSIBLE IN PROVIDED CEILING SPACE.
10. COORDINATE PIPING INSTALLATION AS TO NOT INTERFERE WITH HVAC EQUIPMENT ACCESS.
11. ANY ERRORS OR AMBIGUITIES IN THE PLANS AND/OR SPECIFICATIONS THAT ARE DISCOVERED BY THE CONTRACTOR SHALL BE REPORTED TO THE ARCHITECT/ENGINEER BEFORE WORK IS STARTED. OMISSION OF PARTICULAR REFERENCE TO ANY ITEM NECESSARY FOR COMPLETE INSTALLATION AND PROPER OPERATION THEREOF SHALL NOT RELIEVE THE CONTRACTOR OF RESPONSIBILITY. THE CONTRACTOR SHALL BE THE SAME AT NO EXTRA COST. THE CONTRACTOR IS RESPONSIBLE FOR REVIEWING ALL CONSTRUCTION DOCUMENTS FOR INFORMATION PRIOR TO BID.
12. CONTRACTOR IS RESPONSIBLE TO PROVIDE ANY REQUIRED FITTINGS TO PERFORM ANY REQUIRED TESTING TO THE LINES (PRESSURE AND FLUSHING), AND REMOVE ANYTHING THAT WOULD NOT MEET THE LEGIONELLA DIRECTIVE AFTER TESTING IS COMPLETE.

FIRE PROTECTION GENERAL NOTES

1. COORDINATE INSTALLATION OF SPRINKLER PIPING AND ALL COMPONENTS WITH OTHER TRADES, OWNER, AND GENERAL CONTRACTOR.
2. FIRE PROTECTION SYSTEM TO COMPLY WITH NFPA #13, INSURANCE CARRIER AND ALL APPLICABLE STATE AND LOCAL CODES.
3. SPRINKLER HEAD LOCATIONS ARE FOR SCHEMATIC USE AND ANY ADDITIONAL HEADS REQUIRED PER CODE SHALL BE INSTALLED. VERIFY STRUCTURAL, MECHANICAL, ELECTRICAL INSTALLATIONS AND AVOID OBSTRUCTIONS OR INTERFERENCES.
4. ALL SPRINKLER HEADS SHALL BE INSTALLED CENTER OF TILE.
5. THE USE OF U-BOLT MECHANICAL TEES ALSO KNOWN AS "JACK TEES" IS PROHIBITED.
6. SPRINKLER HEADS ARE TO BE COORDINATED WITH ALL DIFFUSERS, SPEAKERS, LIGHTING FIXTURES, CEILING SYSTEMS AND STRUCTURAL SYSTEM.
7. ALL SPRINKLER PIPING SHALL BE SCHEDULE 40.

CIRCULATION PUMP SCHEDULE									
MARK	MAXIMUM WORKING PRESSURE	MAXIMUM OPERATING TEMP	ELECTRICAL CHART	MOTOR			FLANGE SIZE (INCHES)	MATERIAL	MANUFACTURER & MODEL NO.
				F.L.A.MPS	WATTS	RPM			
CP-1	150 PSI	225°F	115/60/1	2.3	270	3300	3/4"	BRONZE	B & G #NFB-36 (3 SPEED PUMP)
NOTES:									
1. PROVIDE FLANGE KIT.									
2. SEE DETAIL ON SHEET P102 FOR COMPONENTS AND MORE INFORMATION.									

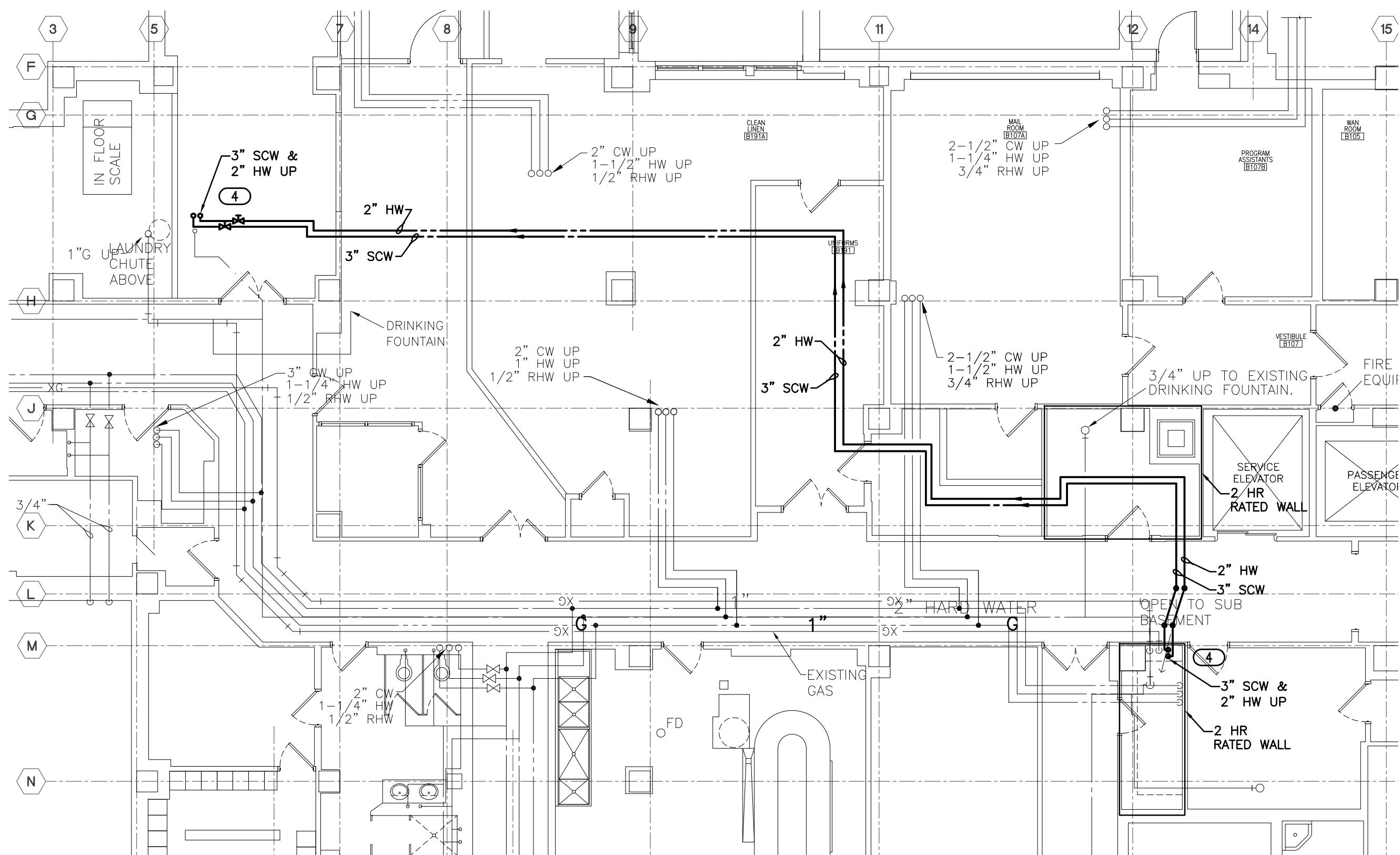
DOMESTIC BOOSTER PUMP SCHEDULE													
MARK	LOCATION	TYPE	FLUID			MOTOR				MATERIAL	MANUFACTURER & MODEL NO.	NOTES	
			FLOW RATE (GPM)	PRESSURE (PSI)	WORKING FLUID	ELECTRICAL OVER CURRENT (A)	F.L.A. AMPS	HP	RPM				SPEED CONTROL
DBP-1	MECH ROOM 7200	HORIZONTAL MULTISTAGE CENTRIFUGAL	30	34	WATER	208/60/1	6.7	1.5	3480	VARIABLE	STAINLESS STEEL	GRUNDFOS CMES-3 PLUS	1,2,3,4,5,6,7
DBP-2	MECH ROOM 7200	HORIZONTAL MULTISTAGE CENTRIFUGAL	30	34	WATER	208/60/1	6.7	1.5	3480	VARIABLE	STAINLESS STEEL	GRUNDFOS CMES-3 PLUS	1,2,3,4,5,6,7
DBP-3	SPARE PUMP	HORIZONTAL MULTISTAGE CENTRIFUGAL	30	34	WATER	208/60/1	6.7	1.5	3480	VARIABLE	STAINLESS STEEL	GRUNDFOS CMES-3 PLUS	1,2,3,8,9

NOTES:

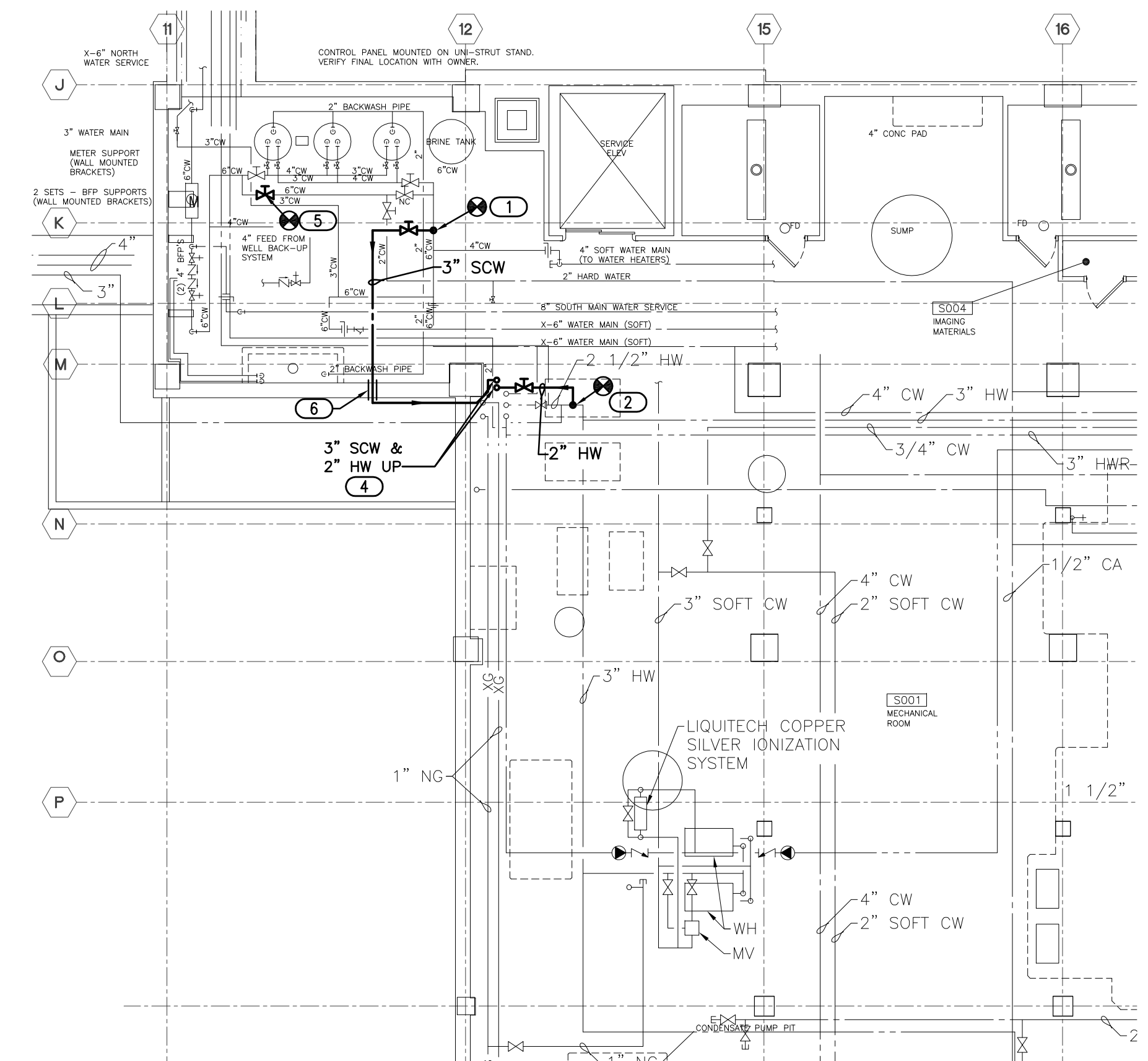
- PUMP SHALL INCLUDE INTEGRATED VARIABLE FREQUENCY DRIVE AND CONTROLLER.
- PROVIDE EXTERNAL SENSOR TO CONTROL PUMP BASED ON FLOW AND PRESSURE.
- PROVIDE INTEGRATED CONTROL PANEL THAT CAN ENABLE SETTING OF REQUIRED SET-POINT, MIN, MAX, STOP.
- PROVIDE TERMINAL CONNECTIONS BACK TO CONNECTING TO THE BUILDING AUTOMATION SYSTEM SIEMANS PL1 A1 PROTOCOL. THE PUMP CONTROLLER INTO BAS TO PROVIDE START, STOP AND STATUS OF PUMP.
- PROVIDE AND INSTALL PUMPS ON 4" CONCRETE HOUSEKEEPING PAD.
- SEE DETAILS ON SHEET P102 FOR COMPONENTS AND MORE INFORMATION.
- PROVIDE PRESSURE SWITCH AND TIE INTO BAS. WHEN PRESSURE DROPS BELOW PREDETERMINED SET POINT, BAS WILL ALARM. IF PRESSURE CONTINUES TO DROP, BAS SHALL SHUT OFF PUMP.
- DBP-3 & ASSOCIATED CONTROL COMPONENTS SHALL BE PROVIDED AS A SPARE REPLACEMENT PUMP. COORDINATE WITH OWNER FOR LOCATION TO STORE SPARE PUMP & COMPONENTS AT PROJECT COMPLETION.
- PROVIDE TERMINAL CONNECTIONS BACK TO CONNECTING TO THE BUILDING AUTOMATION SYSTEM SIEMANS PL1 A1 PROTOCOL.

VA FORM 08-6231, OCT 1978

three inches = one foot
one and one half inches = one foot
one inch = one foot
three quarters inch = one foot
one half inch = one foot
three eighths inch = one foot
one quarter inch = one foot
one eighth inch = one foot

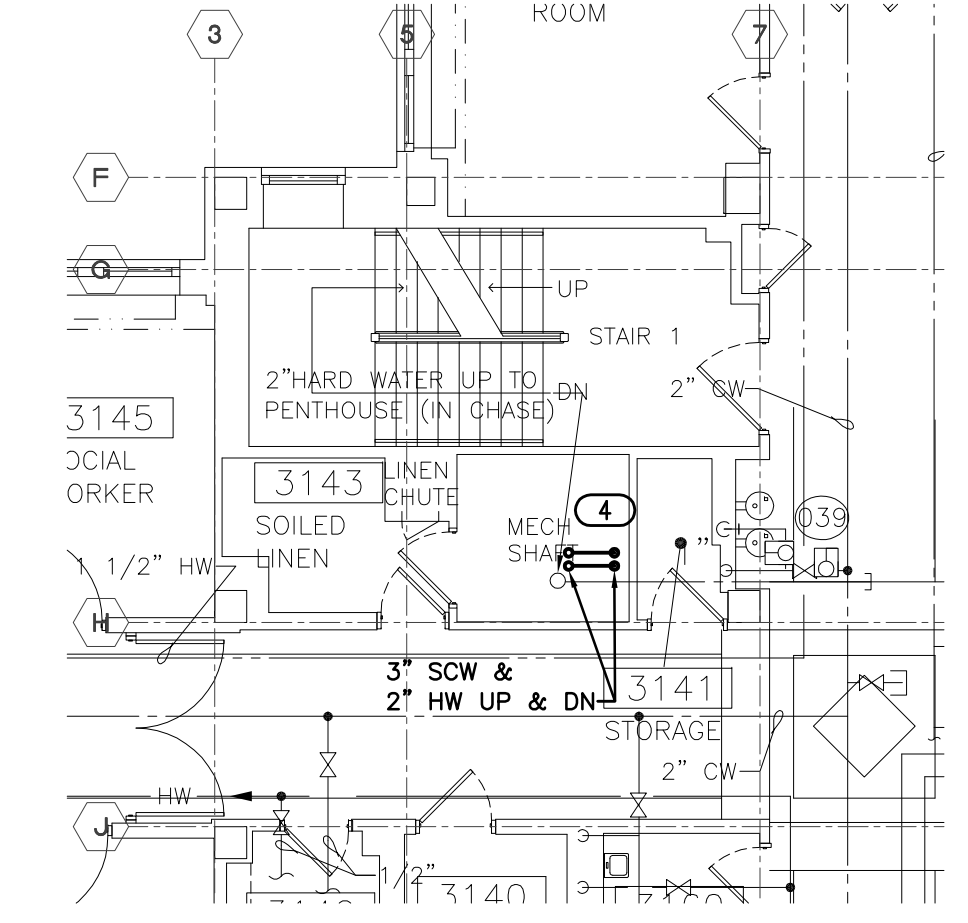


2 PARTIAL BASEMENT PLUMBING PLAN
1/8" = 1'-0"

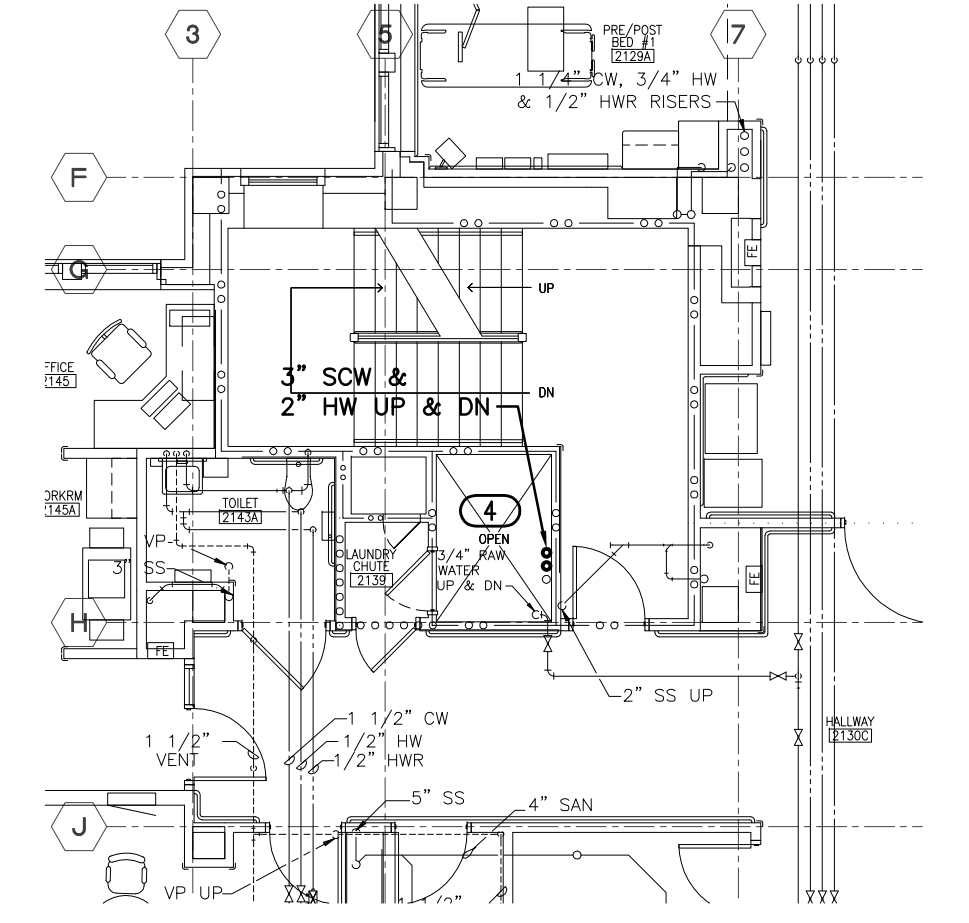


1 PARTIAL SUB-BASEMENT PLUMBING PLAN
1/8" = 1'-0"

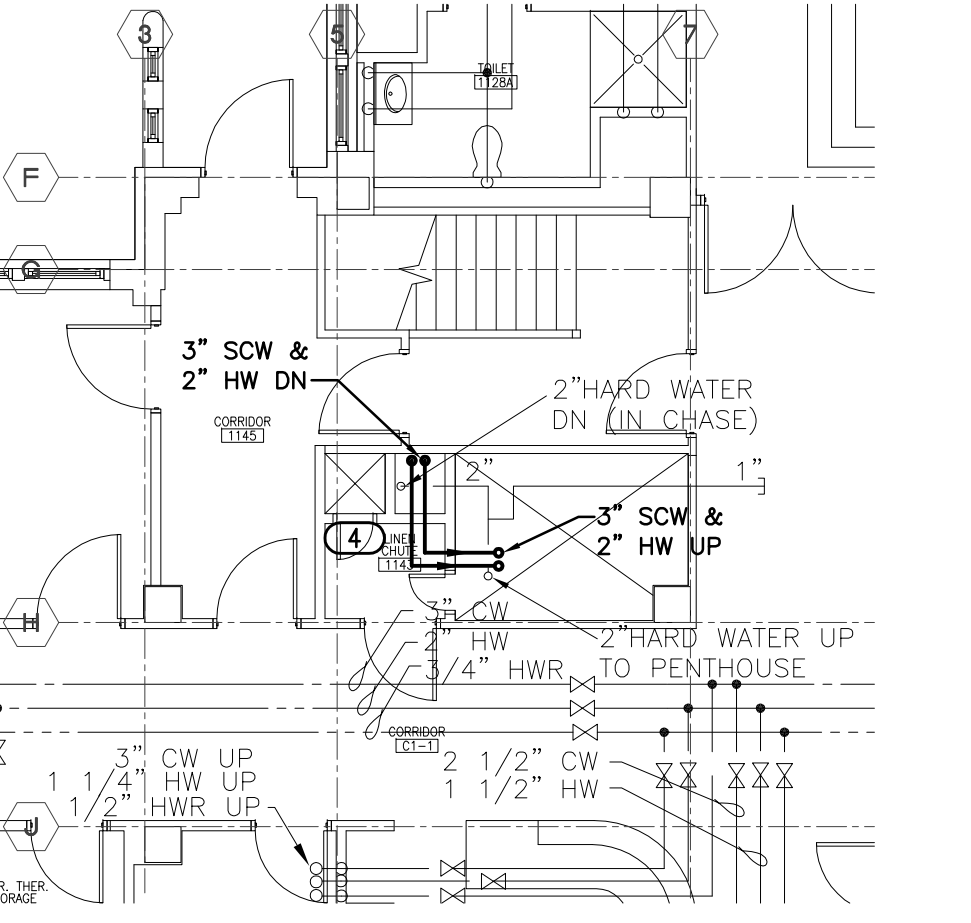
- KEYED NOTES
- 1 CONNECT NEW 3" DOMESTIC SOFT COLD WATER MAIN TO EXISTING 6" DOMESTIC SOFT COLD WATER MAIN.
 - 2 CONNECT NEW 2" DOMESTIC HOT WATER MAIN TO EXISTING DOMESTIC HOT WATER MAIN. COORDINATE SHUTDOWN OF DOMESTIC HOT WATER MAIN WITH VA. WORK SHALL BE DONE DURING OFF-BUSINESS HOURS.
 - 3 CONNECT NEW 3/4" DOMESTIC HOT WATER RETURN MAIN TO EXISTING DOMESTIC HOT WATER RETURN MAIN. COORDINATE SHUTDOWN OF DOMESTIC HOT WATER RETURN MAIN WITH VA. WORK SHALL BE DONE DURING OFF-BUSINESS HOURS.
 - 4 ROUTE NEW DOMESTIC WATER PIPING THROUGH CHASES AND SHAFTS TO SERVE 5TH AND 6TH FLOORS. VERIFY ROUTING OF PIPING PRIOR TO INSTALL. COORDINATE REQUIRED ROUTE AND SPACE WITH EXISTING COMPONENTS IN CEILING SPACES AND SHAFTS.
 - 5 PROVIDE NEW 6" SHUTOFF VALVE ON EXISTING 6" DOMESTIC COLD WATER MAIN. COORDINATE SHUTDOWN OF DOMESTIC WATER SERVICE WITH VA. WORK SHALL BE DONE DURING OFF-BUSINESS HOURS.
 - 6 PC SHALL CORE DRILL TO ROUTE NEW 3" SOFT CW PIPING INTO TUNNEL AS SHOWN.
 - 7 REMOVE EXISTING DOMESTIC HOT AND COLD WATER RISERS UP SERVING 6TH FLOOR.
 - 8 REMOVE EXISTING DOMESTIC HOT AND COLD WATER PIPE TEES AND PROVIDE 90° ELBOW FOR CONNECTION TO HOT AND COLD WATER RISERS DOWN. COORDINATE SHUTDOWN OF DOMESTIC WATER MAINS WITH VA. WORK SHALL BE DONE DURING OFF-BUSINESS HOURS.



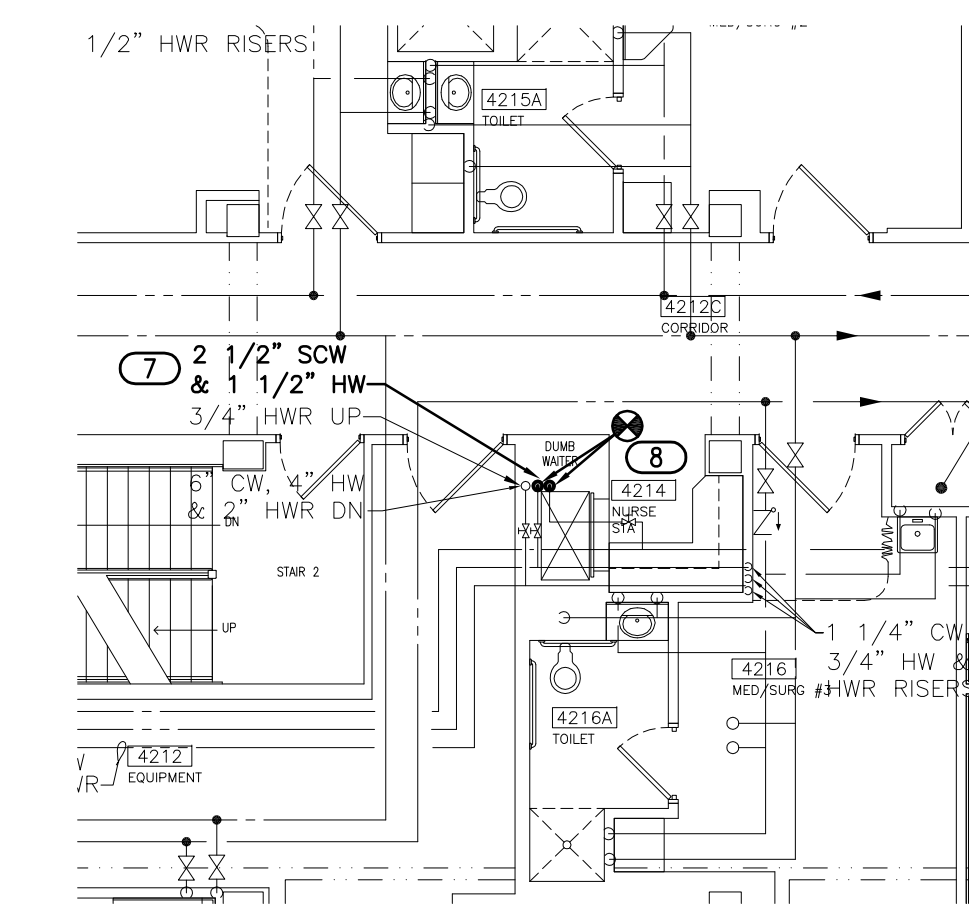
5 PARTIAL THIRD FLOOR PLUMBING PLAN - WEST
1/8" = 1'-0"



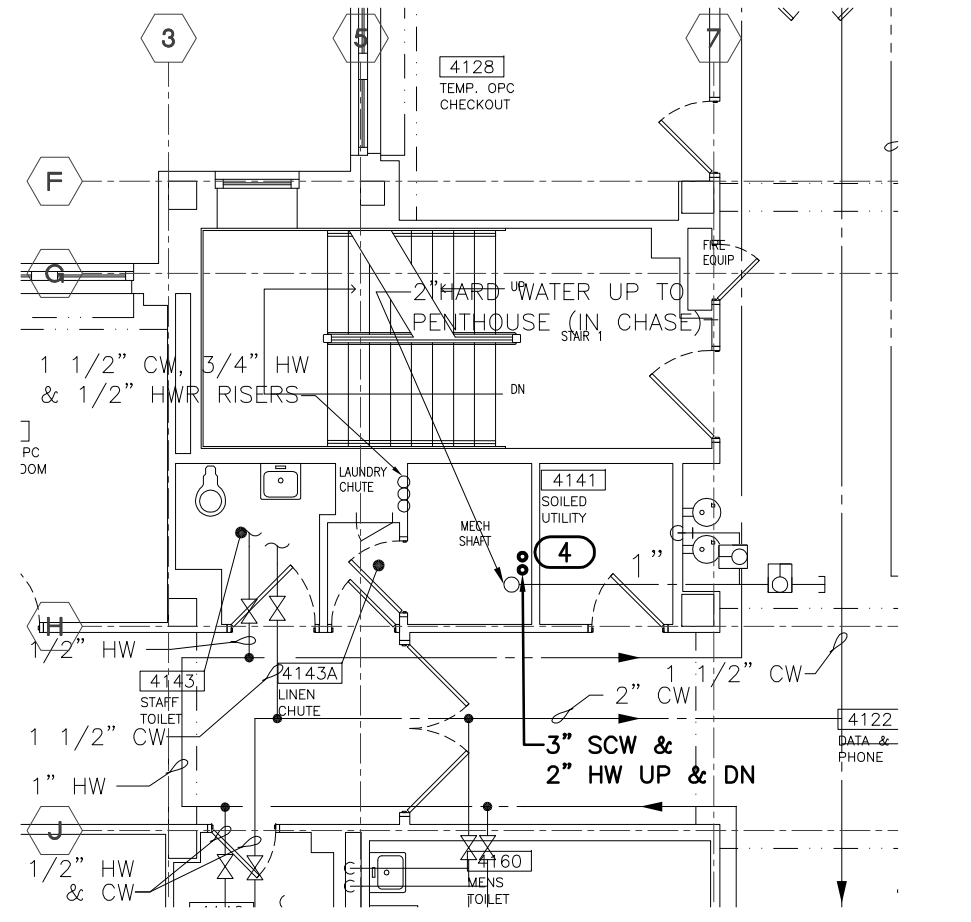
4 PARTIAL SECOND FLOOR PLUMBING PLAN - WEST
1/8" = 1'-0"



3 PARTIAL FIRST FLOOR PLUMBING PLAN - WEST
1/8" = 1'-0"



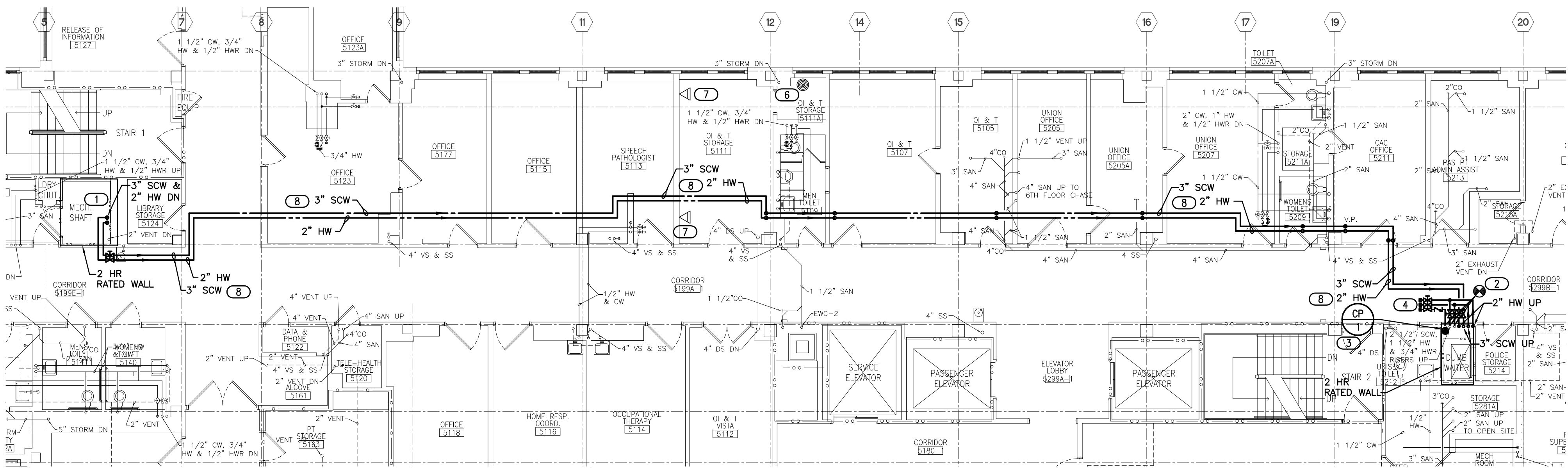
7 PARTIAL FOURTH FLOOR PLUMBING PLAN - CENTER
1/8" = 1'-0"



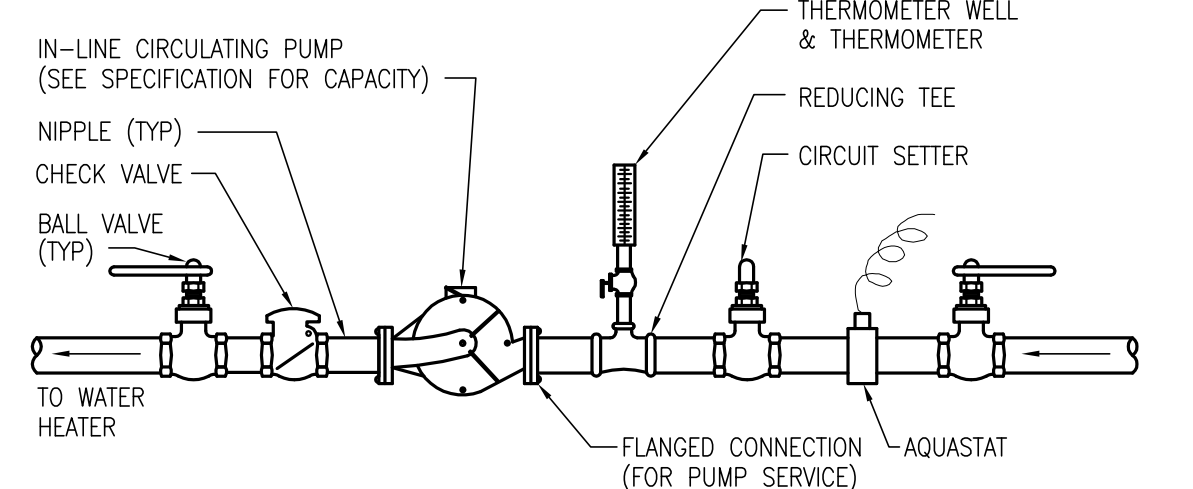
6 PARTIAL FOURTH FLOOR PLUMBING PLAN - WEST
1/8" = 1'-0"

--	--	--	--	--	--	--	--	--	--	--	--	--	--	--	--	--	--	--	--	--	--	--	--	--	--	--	--	--	--	--	--	--	--	--	--	--	--	--	--	--	--	--	--	--	--	--	--	--	--	--	--	--	--	--	--	--	--	--	--	--	--	--	--	--	--	--	--	--	--	--	--	--	--	--	--	--	--	--	--	--	--	--	--	--	--	--	--	--	--	--	--	--	--	--	--	--	--	--	--	--	--	--	--	--	--	--	--	--	--	--	--	--	--	--	--	--	--	--	--	--	--	--	--	--	--	--	--	--	--	--	--	--	--	--	--	--	--	--	--	--	--	--	--	--	--	--	--	--	--	--	--	--	--	--	--	--	--	--	--	--	--	--	--	--	--	--	--	--	--	--	--	--	--	--	--	--	--	--	--	--	--	--	--	--	--	--	--	--	--	--	--	--	--	--	--	--	--	--	--	--	--	--	--	--	--	--	--	--	--	--	--	--	--	--	--	--	--	--	--	--	--	--	--	--	--	--	--	--	--	--	--	--	--	--	--	--	--	--	--	--	--	--	--	--	--	--	--	--	--	--	--	--	--	--	--	--	--	--	--	--	--	--	--	--	--	--	--	--	--	--	--	--	--	--	--	--	--	--	--	--	--	--	--	--	--	--	--	--	--	--	--	--	--	--	--	--	--	--	--	--	--	--	--	--	--	--	--	--	--	--	--	--	--	--	--	--	--	--	--	--	--	--	--	--	--	--	--	--	--	--	--	--	--	--	--	--	--	--	--	--	--	--	--	--	--	--	--	--	--	--	--	--	--	--	--	--	--	--	--	--	--	--	--	--	--	--	--	--	--	--	--	--	--	--	--	--	--	--	--	--	--	--	--	--	--	--	--	--	--	--	--	--	--	--	--	--	--	--	--	--	--	--	--	--	--	--	--	--	--	--	--	--	--	--	--	--	--	--	--	--	--	--	--	--	--	--	--	--	--	--	--	--	--	--	--	--	--	--	--	--	--	--	--	--	--	--	--	--	--	--	--	--	--	--	--	--	--	--	--	--	--	--	--	--	--	--	--	--	--	--	--	--	--	--	--	--	--	--	--	--	--	--	--	--	--	--	--	--	--	--	--	--	--	--	--	--	--	--	--	--	--	--	--	--	--	--	--	--	--	--	--	--	--	--	--	--	--	--	--	--	--	--	--	--	--	--	--	--	--	--	--	--	--	--	--	--	--	--	--	--	--	--	--	--	--	--	--	--	--	--	--	--	--	--	--	--	--	--	--	--	--	--	--	--	--	--	--	--	--	--	--	--	--	--	--	--	--	--	--	--	--	--	--	--	--	--	--	--	--	--	--	--	--	--	--	--	--	--	--	--	--	--	--	--	--	--	--	--	--	--	--	--	--	--	--	--	--	--	--	--	--	--	--	--	--	--	--	--	--	--	--	--	--	--	--	--	--	--	--	--	--	--	--	--	--	--	--	--	--	--	--	--	--	--	--	--	--	--	--	--	--	--	--	--	--	--	--	--	--	--	--	--	--	--	--	--	--	--	--	--	--	--	--	--	--	--	--	--	--	--	--	--	--	--	--	--	--	--	--	--	--	--	--	--	--	--	--	--	--	--	--	--	--	--	--	--	--	--	--	--	--	--	--	--	--	--	--	--	--	--	--	--	--	--	--	--	--	--	--	--	--	--	--	--	--	--	--	--	--	--	--	--	--	--	--	--	--	--	--	--	--	--	--	--	--	--	--	--	--	--	--	--	--	--	--	--	--	--	--	--	--	--	--	--	--	--	--	--	--	--	--	--	--	--	--	--	--	--	--	--	--	--	--	--	--	--	--	--	--	--	--	--	--	--	--	--	--	--	--	--	--	--	--	--	--	--	--	--	--	--	--	--	--	--	--	--	--	--	--	--	--	--	--	--	--	--	--	--	--	--	--	--	--	--	--	--	--	--	--	--	--	--	--	--	--	--	--	--	--	--	--	--	--	--	--	--	--	--	--	--	--	--	--	--	--	--	--	--	--	--	--	--	--	--	--	--	--	--	--	--	--	--	--	--	--	--	--	--	--	--	--	--	--	--	--	--	--	--	--	--	--	--	--	--	--	--	--	--	--	--	--	--	--	--	--	--	--	--	--	--	--	--	--	--	--	--	--	--	--	--	--	--	--	--	--	--	--	--	--	--	--	--	--	--	--	--	--	--	--	--	--	--	--	--	--	--	--	--	--	--	--	--	--	--	--	--	--	--	--	--	--	--	--	--	--	--	--	--	--	--	--	--	--	--	--	--	--	--	--	--	--	--	--	--	--	--	--	--	--	--	--	--	--	--	--	--	--	--	--	--	--	--	--	--	--	--	--	--	--	--	--	--	--	--	--	--	--	--	--	--	--	--	--	--	--	--	--	--	--	--	--	--	--	--	--	--	--	--	--	--	--	--	--	--	--	--	--	--	--	--	--	--	--	--	--	--	--	--	--	--	--	--	--	--	--	--	--	--	--	--	--	--	--	--	--	--	--	--	--	--	--	--	--	--	--	--	--	--	--	--	--	--	--	--	--	--	--	--	--	--	--	--	--	--	--	--	--	--	--	--	--	--	--	--	--	--	--	--	--	--	--	--	--	--	--	--	--	--	--	--	--	--	--	--	--	--	--	--	--	--	--	--	--	--	--	--	--	--	--	--	--	--	--	--	--	--	--	--	--	--	--	--	--	--	--	--	--	--	--	--	--	--	--	--	--	--	--	--	--	--	--	--	--	--	--	--	--	--	--	--	--	--	--	--	--	--	--	--	--	--	--	--	--	--	--	--	--	--	--	--	--	--	--	--	--	--	--	--	--	--	--	--	--	--	--	--	--	--	--	--	--	--	--	--	--	--	--	--	--	--	--	--	--	--	--	--	--	--	--	--	--	--	--	--	--	--	--	--	--	--	--	--	--	--	--	--	--	--	--	--	--	--	--	--	--	--	--	--	--	--	--	--	--	--	--	--	--	--	--	--	--	--	--	--	--	--	--	--	--	--	--	--	--	--	--	--	--	--	--	--	--	--	--	--	--	--	--	--	--	--	--	--	--	--	--	--	--	--	--	--	--	--	--	--	--	--	--	--	--	--	--	--	--	--	--	--	--	--	--	--	--	--	--	--	--	--	--	--	--	--	--	--	--	--	--	--	--	--	--	--	--	--	--	--	--	--	--	--	--	--	--	--	--	--	--	--	--	--	--	--	--	--	--	--	--	--	--	--	--	--	--	--	--	--	--	--	--	--	--	--	--	--	--	--	--	--	--	--	--	--	--	--	--	--	--	--	--	--	--	--	--	--	--	--	--	--	--	--	--	--	--	--	--	--	--	--	--	--	--	--	--	--	--	--	--	--	--	--	--	--	--	--	--	--	--	--	--	--	--	--	--	--	--	--	--	--	--	--	--	--	--	--	--	--	--	--	--	--	--	--	--	--	--	--	--	--	--	--	--	--	--	--	--	--	--	--	--	--	--	--	--	--	--	--	--	--	--	--	--	--	--	--	--	--	--	--	--	--	--	--	--	--	--	--	--	--	--	--	--	--	--	--	--	--	--	--	--	--	--	--	--	--	--	--	--	--	--	--	--

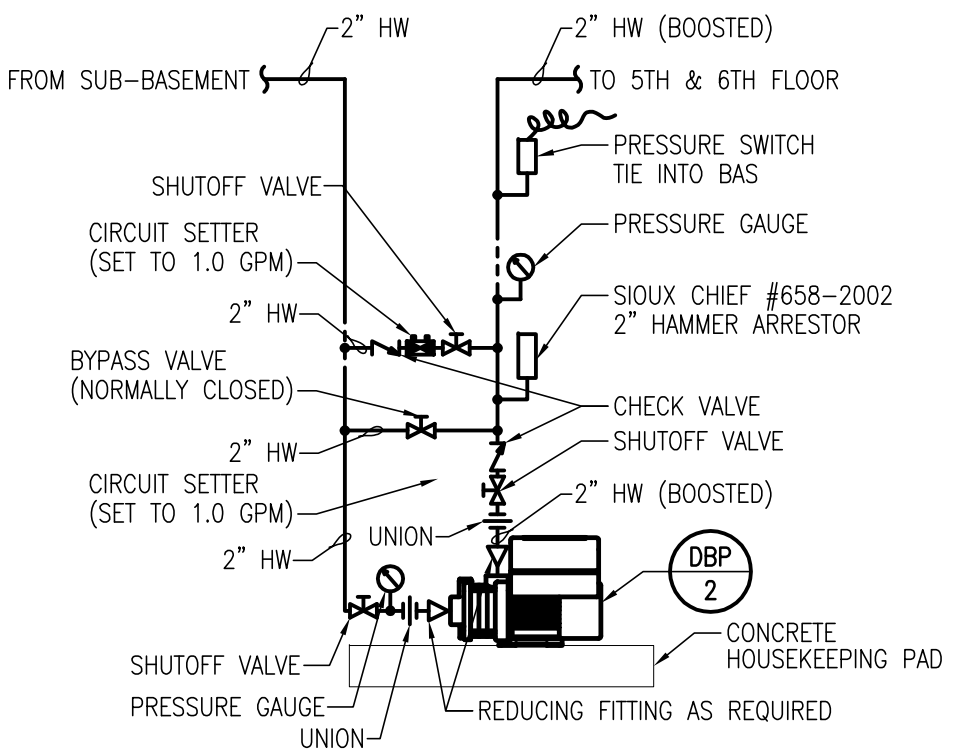
three inches = one foot
one and one half inches = one foot
one inch = one foot
three quarters inch = one foot
one half inch = one foot
three eighths inch = one foot
one quarter inch = one foot
one eighth inch = one foot



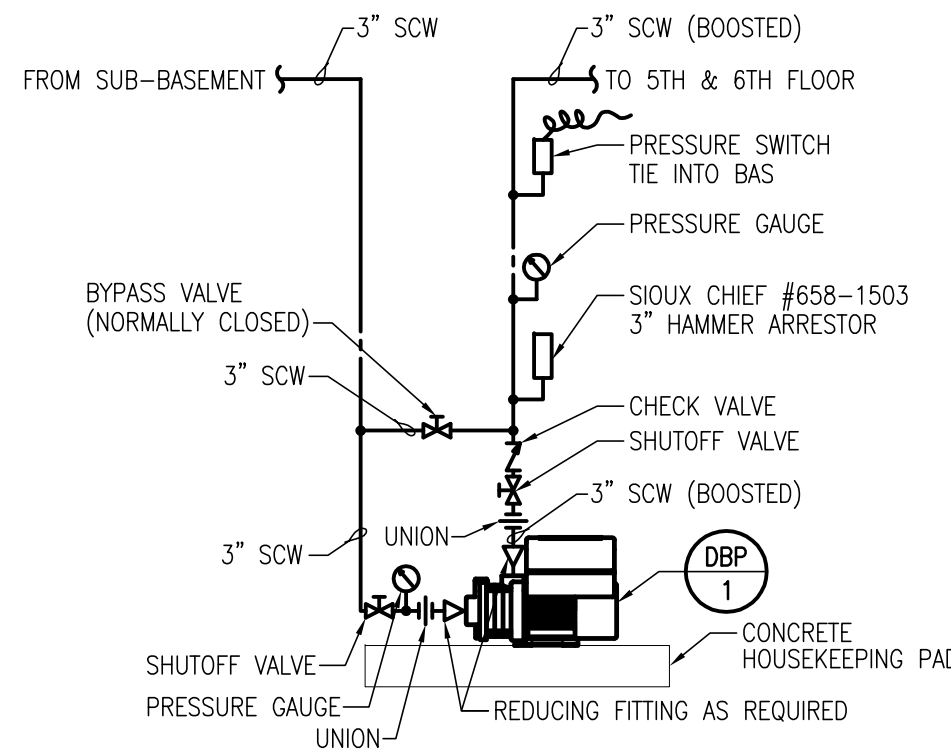
1 PARTIAL FIFTH FLOOR PLUMBING PLAN
1/8" = 1'-0"



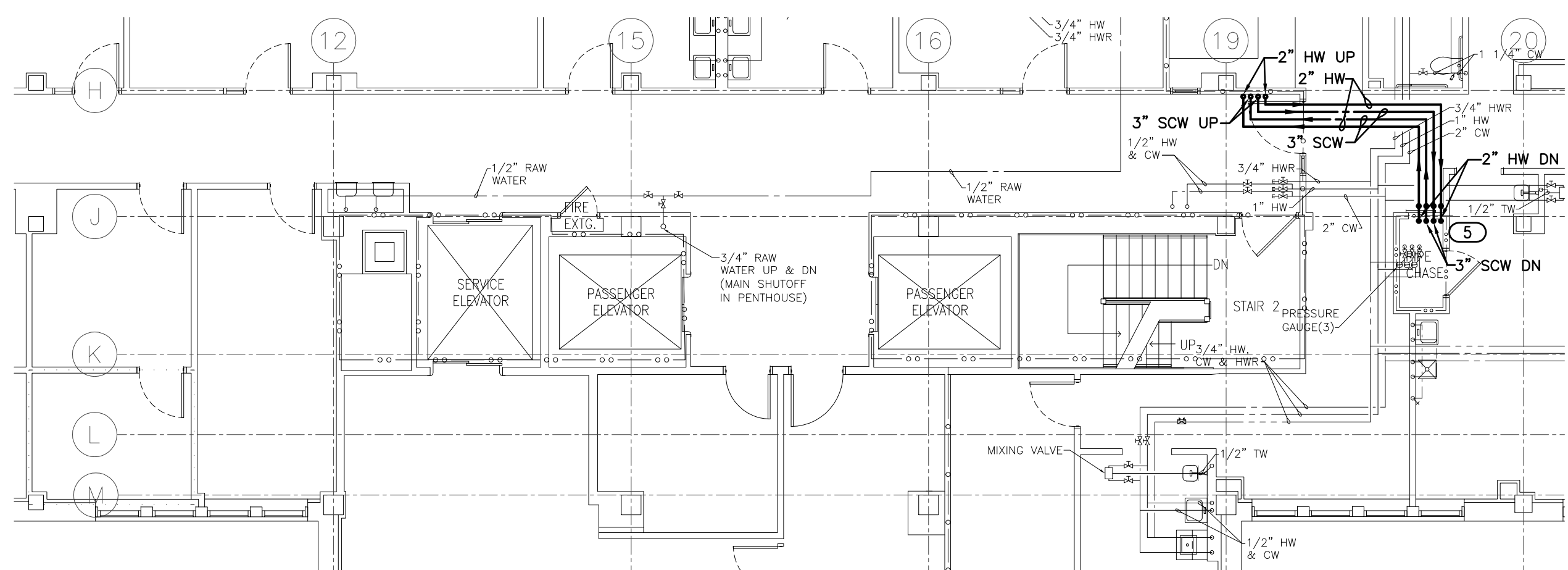
4 HOT WATER RECIRCULATION PUMP
NOT TO SCALE



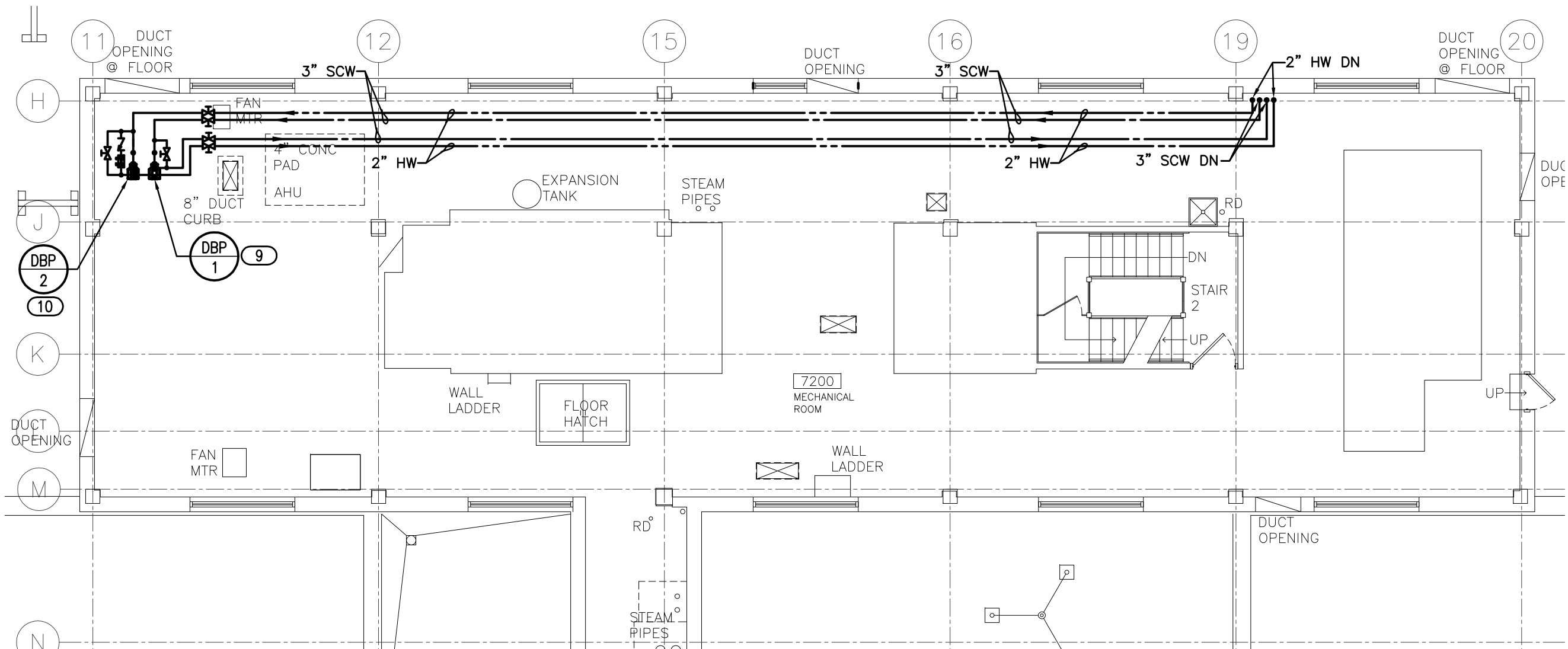
6 DBP-2 - BOOSTER PUMP PIPING DETAIL
NOT TO SCALE



5 DBP-1 - BOOSTER PUMP PIPING DETAIL
NOT TO SCALE



2 PARTIAL SIXTH FLOOR PLUMBING PLAN
1/8" = 1'-0"



3 SEVENTH FLOOR PLUMBING PLAN
1/8" = 1'-0"

- KEYED NOTES**
- ROUTE NEW DOMESTIC WATER PIPING THROUGH CHASES AND SHAFTS TO SERVE 5TH AND 6TH FLOORS. VERIFY ROUTING OF PIPING PRIOR TO INSTALL. COORDINATE REQUIRED ROUTE AND SPACE WITH EXISTING COMPONENTS IN CEILING SPACES AND SHAFTS.
 - DISCONNECT EXISTING 2 1/2" COLD WATER AND 1 1/2" HOT WATER TO 6TH FLOOR FROM EXISTING DOMESTIC WATER RISERS. CONNECT NEW 3" COLD WATER AND 2" HOT WATER PIPING TO EXISTING 2 1/2" COLD WATER AND 1 1/2" HOT WATER RISERS TO 6TH FLOOR. CONNECT NEW 3/4" HOT WATER RETURN PIPING TO EXISTING 3/4" HOT WATER RETURN RISER.
 - PROVIDE DOMESTIC HOT WATER RETURN CIRCULATION PUMP ON 3/4" HOT WATER RETURN PIPING IN DUMB WATER SHAFT. PUMP SHALL SERVE NEW HOT WATER RETURN FOR 5TH AND 6TH FLOOR. SEE CIRCULATION PUMP SCHEDULE ON SHEET P001, DETAIL 4/P102 AND ISOMETRIC 1/P001 FOR MORE INFORMATION. COORDINATE ELECTRICAL REQUIREMENTS WITH ELECTRICAL CONTRACTOR.
 - PROVIDE 3" SOFT COLD WATER, 2" HOT WATER AND 3/4" HOT WATER RETURN WITH VALVES AND CAPPED FOR FUTURE 5TH FLOOR REMODEL.
 - ROUTE NEW SOFT HOT AND SOFT COLD WATER MAINS OUT OF NORTHEAST CORNER OF PIPE CHASE BELOW BEAM IN 6TH FLOOR CEILING SPACE. ONCE PIPING IS NORTH OF BEAM, OFFSET PIPING UP TO CLEAR 6" DELIVERY TUBING. COORDINATE WITH ELECTRICAL CONTRACTOR TO RELOCATE TWO FIRE ALARM JUNCTION BOXES AND ONE CRITICAL CIRCUIT JUNCTION BOX AT EXTERIOR NORTH SIDE OF CHASE FOR INSTALLATION OF NEW WATER MAINS.
 - REMOVE EXISTING SPRINKLER HEAD AND REPLACE WITH NEW CONCEALED HEAD IN ROOM 5111A.
 - RELOCATE EXISTING SIDENALL HEADS AS NEEDED TO ACCOMMODATE NEW LAY-IN CEILING.
 - INSTALL PIPING AS HIGH AS POSSIBLE TO ACCOMMODATE FUTURE DUCTWORK.
 - PROVIDE NEW DOMESTIC BOOSTER PUMP ON EXISTING CONCRETE PAD FOR DOMESTIC SOFT COLD WATER SUPPLY FOR 5TH AND 6TH FLOOR. SEE DOMESTIC BOOSTER PUMP SCHEDULE ON SHEET P001 AND DETAIL 5/P102 FOR MORE INFORMATION. PROVIDE AND INSTALL PUMPS ON 4" CONCRETE HOUSEKEEPING PAD.
 - PROVIDE NEW DOMESTIC BOOSTER PUMP ON EXISTING CONCRETE PAD FOR DOMESTIC SOFT HOT WATER SUPPLY FOR 5TH AND 6TH FLOOR. SEE DOMESTIC BOOSTER PUMP SCHEDULE ON SHEET P001 AND DETAIL 6/P102 FOR MORE INFORMATION. PROVIDE AND INSTALL PUMPS ON 4" CONCRETE HOUSEKEEPING PAD.

CONSULTANTS:



engineers | consultants | commissioning
MEP Associates, LLC | 2720 Arbor Court | Eau Claire, WI 54601
Phone: 715.832.5660 | Fax: 715.832.5661 | www.mepassociates.com
MEP PROJECT NO.: N08.14.04

ARCHITECT/ENGINEERS:



420 RAIL STREET
NEGAUNEE, MI 49866
PHONE: 906-475-6616
FAX: 906-475-6954
NDW PROJECT NUMBER: 1414

Drawing Title
PLUMBING PLANS
FIFTH FLOOR THROUGH
SEVENTH FLOOR

Approved Project Director

Project Title
Upgrade Domestic Water
5th + 6th Floors

Location
IRON MOUNTAIN, MICHIGAN

Date
SEPTEMBER 28, 2016

Checked
TCC

Drawn
NCF

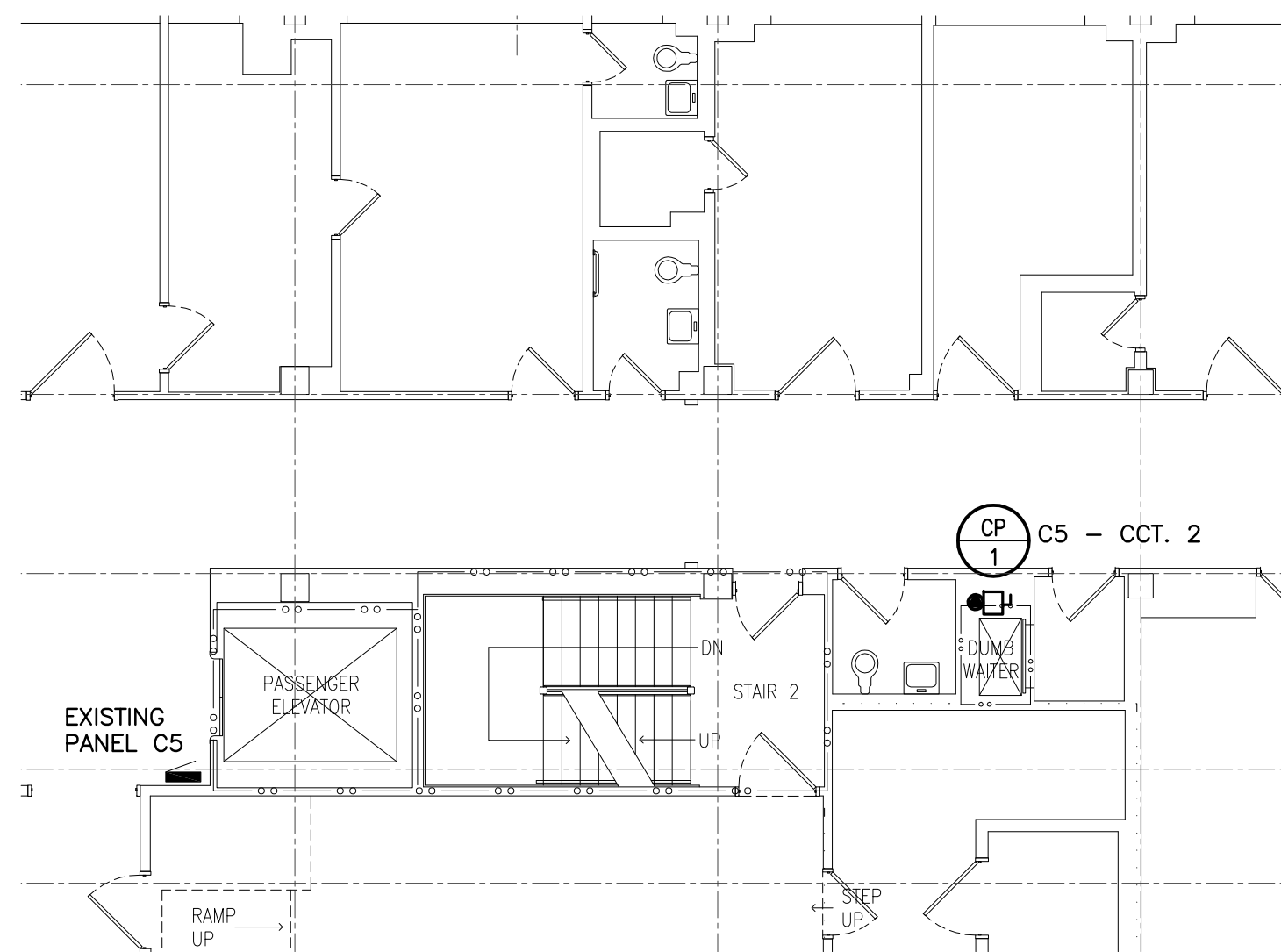
Project Number
585-14-112
Building Number
1

Drawing Number
P102

Dwg. 05 of 06

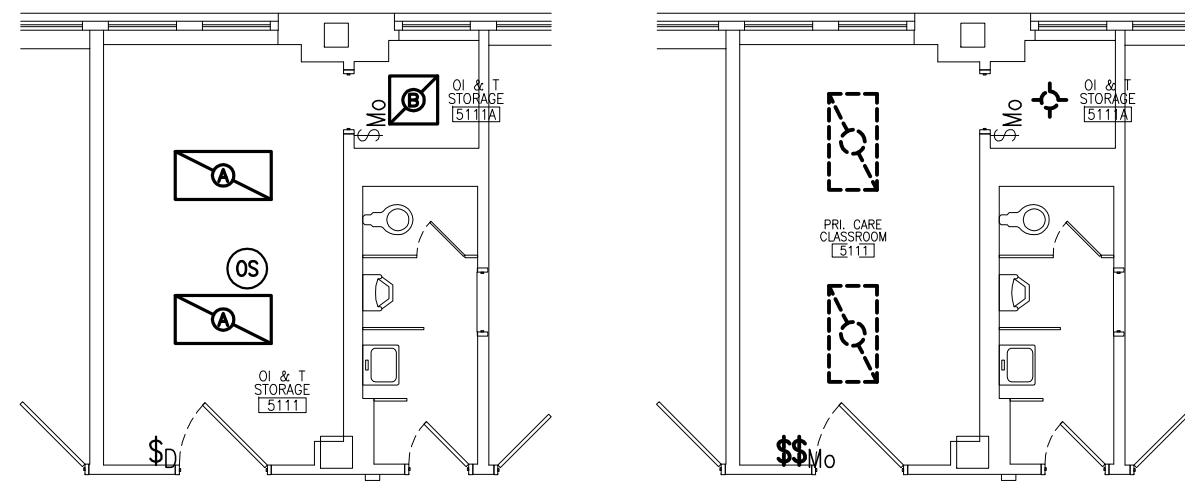
Office of
Construction
and Facilities
Management





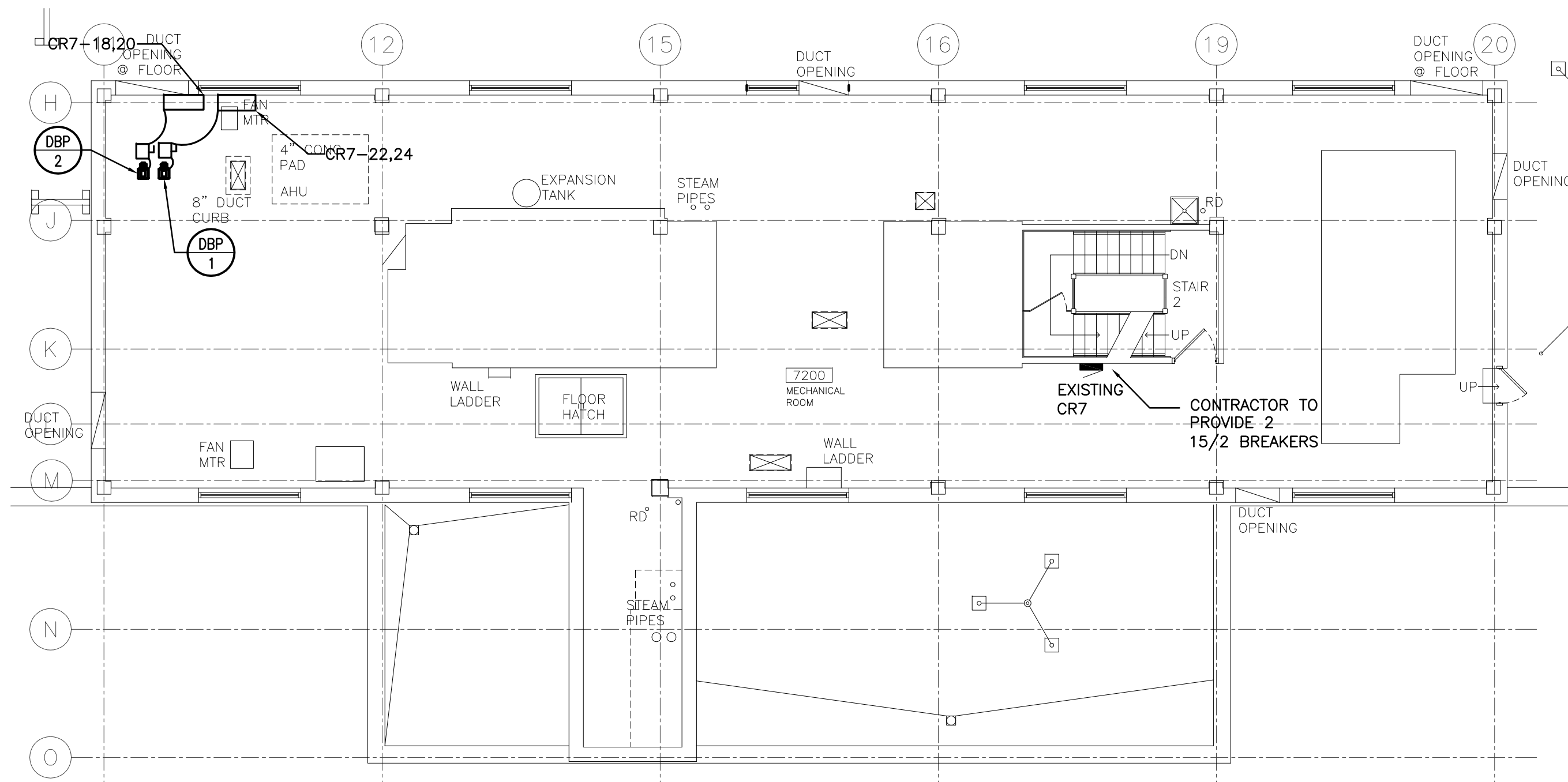
2 PARTIAL FIFTH FLOOR ELECTRICAL PLAN - CENTER
1/8" = 1'-0"

ELECTRICAL SYMBOLS LEGEND	
	DISCONNECT PROVIDED BY EC
	2X4 LED 4500 LMS, 4000K, MVOLT, DIMMABLE COOPER NO. 2AC-LD2-47-UNV-LP840-CD
	2X2 LED 4500 LMS, 4000K, MVOLT, DIMMABLE COOPER NO. 2AC-LD2-33-UNV-LP840-CD
	MULTI-TECHNOLOGY, CEILING MOUNTED OCCUPANCY SENSOR (LINE VOLTAGE)
	WATTSTOPPER: DT-355-3 OR HUBBELL: #OMNIDT2000
	DIMMER SWITCH
	MOTION DETECTOR SWITCH
NOTE: EC SHALL REMOVE EXISTING CEILING LIGHTING FIXTURES. EC SHALL SALVAGE EXISTING LIGHTING CIRCUIT TO ENERGIZE NEW LIGHTING FIXTURES.	

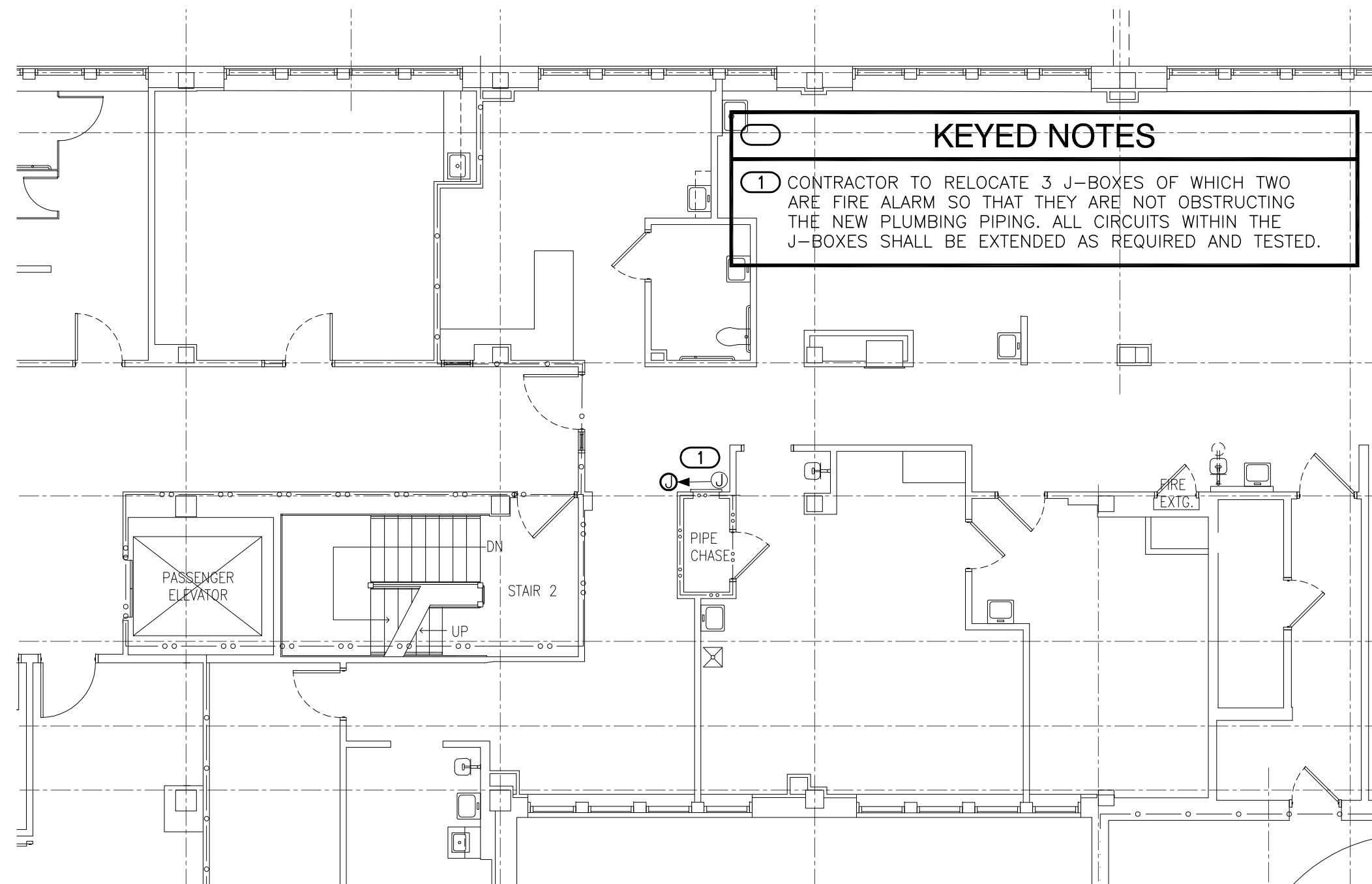


NEW DEMOLITION

1 PARTIAL FIFTH FLOOR ELECTRICAL PLAN - CENTER
1/8" = 1'-0"



4 SEVENTH FLOOR ELECTRICAL PLAN
1/8" = 1'-0"



3 PARTIAL SIXTH FLOOR ELECTRICAL PLAN - CENTER
1/8" = 1'-0"

KEYED NOTES	
1	CONTRACTOR TO RELOCATE 3 J-BOXES OF WHICH TWO ARE FIRE ALARM SO THAT THEY ARE NOT OBSTRUCTING THE NEW PLUMBING PIPING. ALL CIRCUITS WITHIN THE J-BOXES SHALL BE EXTENDED AS REQUIRED AND TESTED.

		CONSULTANTS:		ARCHITECT/ENGINEERS:		Drawing Title		Project Title		Project Number		Office of Construction and Facilities Management Department of Veterans Affairs			
						ELECTRICAL PLANS		Upgrade Domestic Water 5th + 6th Floors		585-14-112					
		engineers consultants commissioning MEP Associates, LLC 2720 Arbor Court Eau Claire, WI 54701 Phone: 715.832.5680 Fax: 715.832.5668 www.mepassociates.com MEP PROJECT NO.: N08.14.04		420 RAIL STREET NEGAUNEE, MI 49866 PHONE: 906-475-6616 FAX: 906-475-6954 NDW PROJECT NUMBER: 1414		Approved Project Director		Location IRON MOUNTAIN, MICHIGAN		Building Number 1					
		100% Construction Documents Revisions		09/28/2016 Date				Date SEPTEMBER 28, 2016		Checked SW		Drawn SW			
										E101 Dwg. 06 of 06					